



Well Name: RGU 431-26-198
Surface Location: RGU 42-26-198
North American Datum 1983 , US State Plane 1983 , Colorado Central Zone
Ground Elevation: 6622.00

+N/-S
0.00

+E/-W
0.00

Northing
1778121.90

Easting
2199615.70

Latitude
39.935237

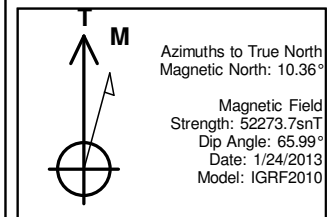
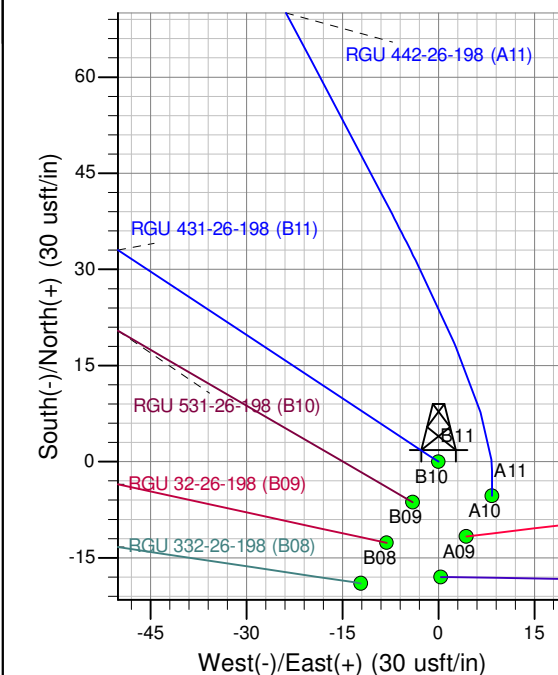
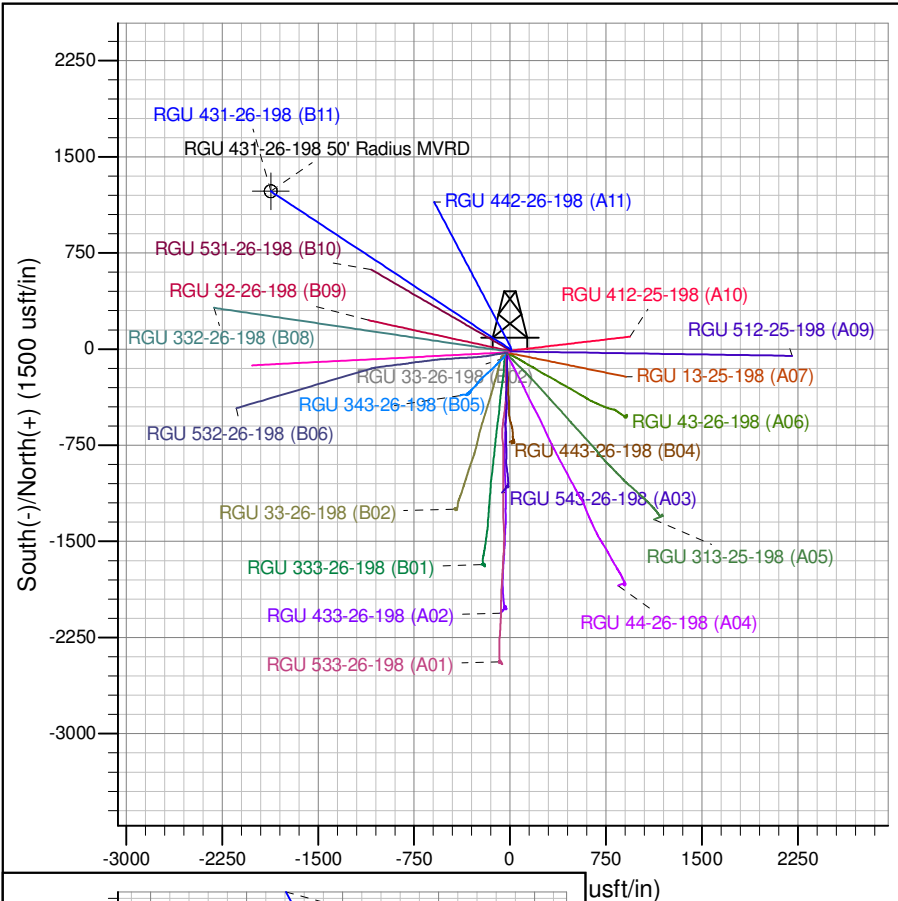
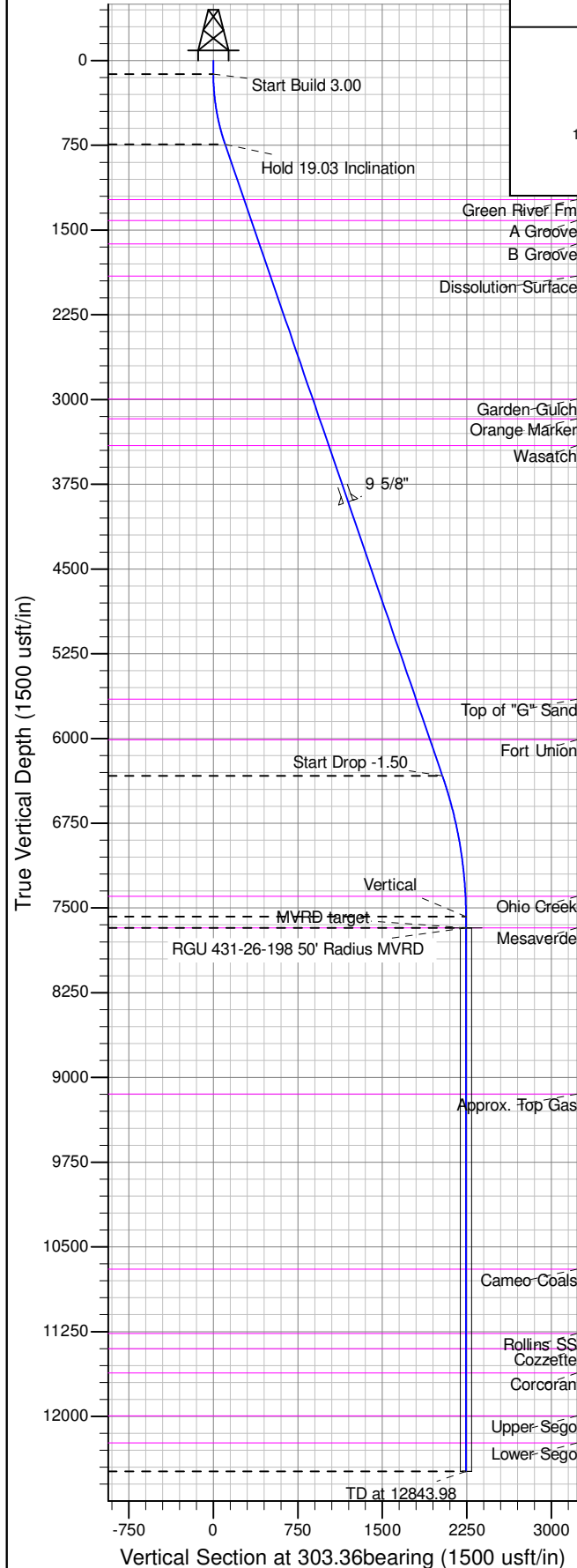
Longitude
-108.354508

Slot
B 11

KB @ 6646.00usft (HP 318)

ANNOTATIONS

TVD	MD	Inc	Azi	+N/-S	+E/-W	VSect	Departure	Annotation
120.00	120.00	0.00	0.00	0.00	0.00	0.00	0.00	Start Build 3.00
742.87	754.47	19.03	303.36	57.42	-87.22	104.42	104.42	Hold 19.03 Inclination
6330.27	6665.04	19.03	303.36	1117.46	-1697.21	2032.05	2032.05	Start Drop -1.50
7576.00	7933.98	0.00	0.00	1232.31	-1871.64	2240.90	2240.90	Vertical
7676.00	8033.98	0.00	0.00	1232.31	-1871.64	2240.90	2240.90	MVRD target
12486.00	12843.98	0.00	0.00	1232.31	-1871.64	2240.90	2240.90	TD at 12843.98



Project: RG 26-01S-098W
Site: RGU 42-26-198
Well: RGU 431-26-198
Design #3 8May15 sam