

0 500 1000 2000



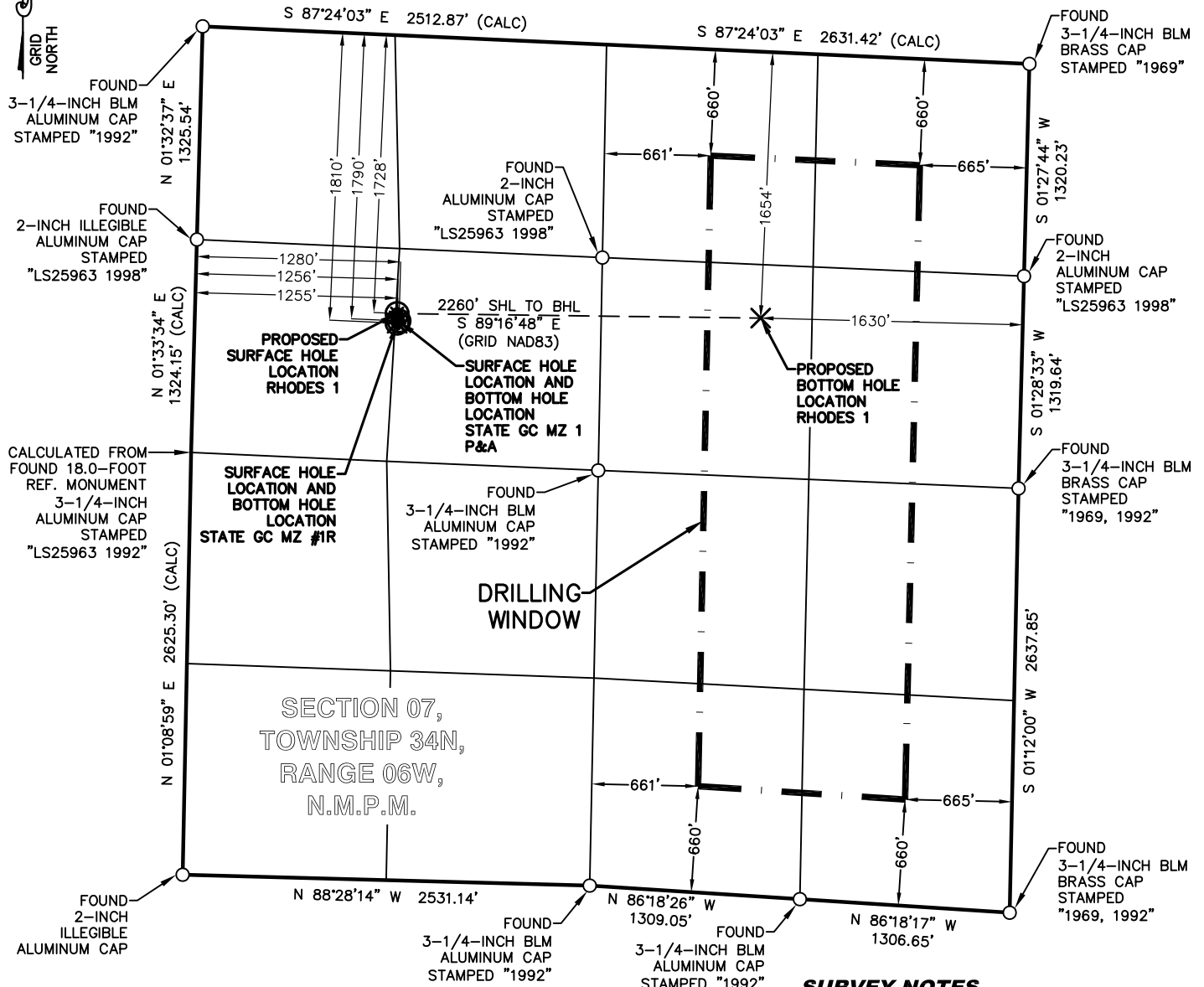
GRAPHIC SCALE IN FEET

**LEGEND**

FOUND MONUMENT ○

PROPOSED SURFACE HOLE LOCATION ⊕

PROPOSED BOTTOM HOLE LOCATION ×



**SURVEY NOTES**

1. BEARING BASIS FOR THIS SURVEY IS BASED ON THE NORTH AMERICAN DATUM OF 1983, COLORADO STATE PLANE COORDINATE SYSTEM, COLORADO SOUTH, ZONE 0503.
2. ELEVATION BASIS FOR THIS SURVEY IS BASED ON THE NORTH AMERICAN VERTICAL DATUM OF 1988 (GEOID12A).
3. SURVEYED IN THE FIELD ON 05/19/2015.
4. BEARINGS AND DISTANCE SHOWN ARE MEASURED IN THE FIELD UNLESS OTHERWISE NOTED.
5. ALL MEASURED DISTANCES SHOWN ARE GRID USING A COMBINED SCALE FACTOR 0.99967648.
6. GPS INSTRUMENT OPERATOR: BRIAN BONIFACE
7. GPS PDOP VALUE: 1.6

RHODES 1	CSZ NAD'83	NAD'83	TIES	ELEVATION
PROPOSED SURFACE HOLE LOCATION (SHL)	N (Y) = 1,203,654.31' E (X) = 2,404,205.25'	LAT. = 37.20805095°N LON. = 107.54590750°W	FNL = 1728' FWL = 1256'	EXISTING GROUND 6927.41'
PROPOSED BOTTOM HOLE LOCATION (BHL)	N (Y) = 1,203,625.92' E (X) = 2,406,464.91'	LAT. = 37.20810866°N LON. = 107.53814836°W	FNL = 1654' FEL = 1630'	PROPOSED GRADE 6927.15'
STATE GC MZ #1R	CSZ NAD'83	NAD'83	TIES	ELEVATION
SURFACE HOLE LOCATION (SHL)	N (Y) = 1,203,594.30' E (X) = 2,404,205.25'	LAT. = 37.207891°N LON. = 107.545914°W	FNL = 1810' FWL = 1255'	EXISTING GROUND 6926.00'
BOTTOM HOLE LOCATION (BHL)	N (Y) = 1,203,594.30' E (X) = 2,404,205.25'	LAT. = 37.207891°N LON. = 107.545914°W	FNL = 1810' FWL = 1255'	PROPOSED GRADE 6627.15'
STATE GC MZ 1	CSZ NAD'83	NAD'83	TIES	ELEVATION
SURFACE HOLE LOCATION (SHL)	N (Y) = 1,203,608.60' E (X) = 2,404,216.91'	LAT. = 37.207858°N LON. = 107.545739°W	FNL = 1790' FWL = 1280'	EXISTING GROUND 6927.00'
BOTTOM HOLE LOCATION (BHL)	N (Y) = 1,203,608.60' E (X) = 2,404,216.91'	LAT. = 37.207858°N LON. = 107.545739°W	FNL = 1790' FWL = 1280'	PROPOSED GRADE 6627.15'

**BP AMERICA**  
PRODUCTION COMPANY  
US LOWER 48 ONSHORE

**MULTI-WELL PLAN**

**RHODES 1**  
PART OF  
SECTION 07, TOWNSHIP 34N, RANGE 06W,  
N.M.P.M.  
LA PLATA COUNTY, COLORADO

DRAWN BY KAN\CFW	CHECKED BY RLM	SCALE 1"=1000'	DATE 05/29/2015	SHEET 1 OF 1	REVISION
---------------------	-------------------	-------------------	--------------------	-----------------	----------