

Job # 12111-HARLEY #6H (THL)

Inv # 3968

High Prairie Surveying of Kiowa, Colorado has, in accordance with a request from **PRONGHORN OPERATING LLC**, determined the location of **HARLEY #6H (THL)** to be **1211 feet FNL**, and **2019 feet FWL**, (90° off Section lines) of Section **5**, Township **14s**, Range **44w** of the 6th Principal Meridian, **Cheyenne County**, Colorado.

Date: Staked on 06/03/15 drawn on 06/04/15.

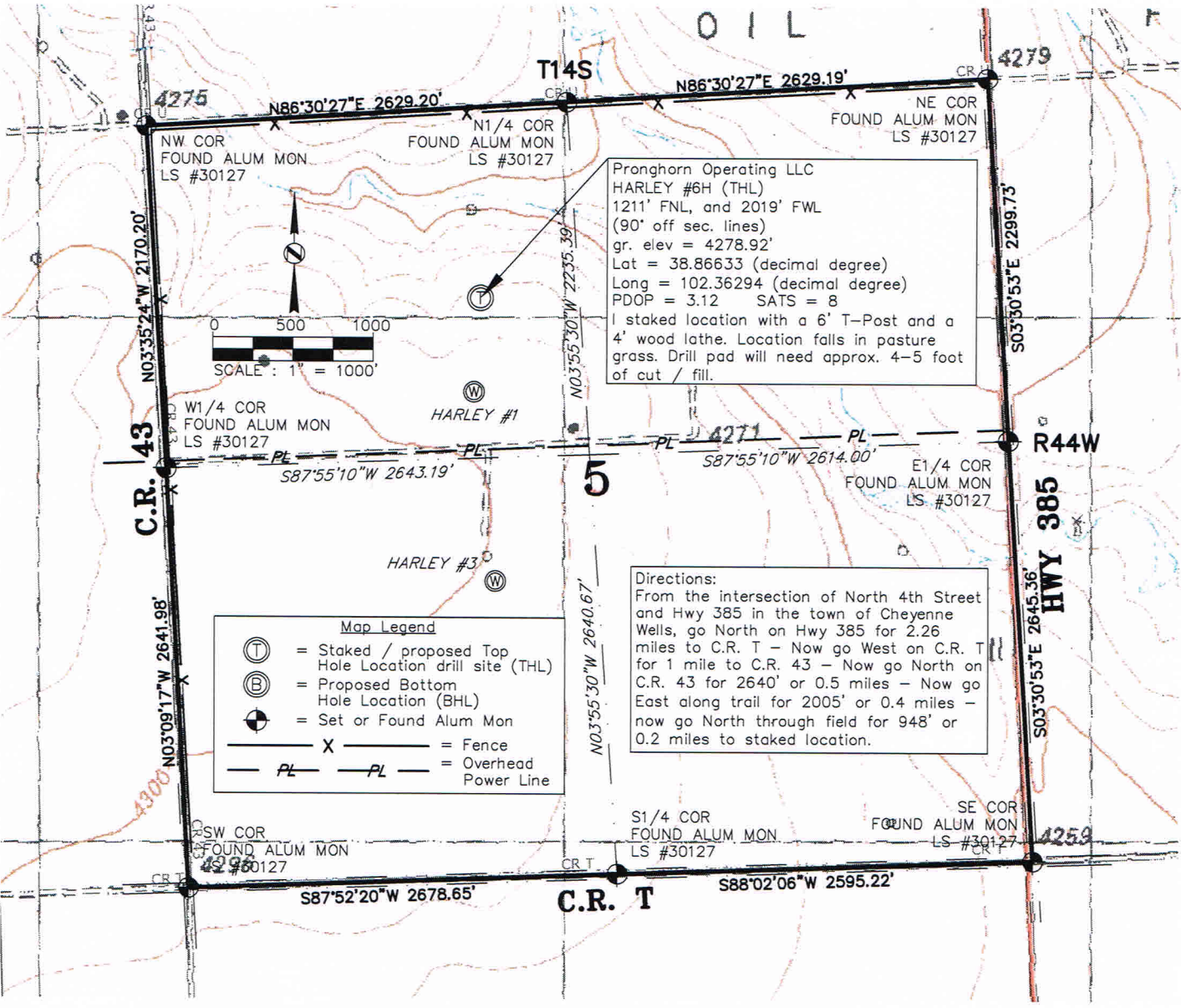
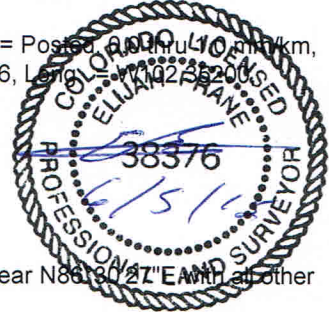
Re: Staked by Elijah Frane

Drawn: Drawn by Dustin Cotter

Basis of Elevation Spot: USGS BM = H 12, PID = JJ0627, H-Order = Third, V-Order = Posted, Accuracy = 1.0 m, Stability = Unknown, P-DOP = 3.12, Sats = 8, US NAD 83 CO-C zone, Lat. = 38.88446, Long = 102.36294, Elevation = 4322.74 gr. (us FT).

Notes: See Location Drawing for improvements within 500 ft of proposed well pad.
 The ground elevation at staked location = 4278.92' gr.
 This drawing does not represent a monumented survey or Land Survey Plat.

Basis of Bearing: Bearings were determined based on the North line of Section 5 to bear N86°30'27"E with all other bearings contained herein relative thereto.



Pronghorn Operating LLC
 HARLEY #6H (THL)
 1211' FNL, and 2019' FWL
 (90° off sec. lines)
 gr. elev = 4278.92'
 Lat = 38.86633 (decimal degree)
 Long = 102.36294 (decimal degree)
 PDOP = 3.12 SATS = 8
 I staked location with a 6' T-Post and a
 4' wood lathe. Location falls in pasture
 grass. Drill pad will need approx. 4-5 foot
 of cut / fill.

Directions:
 From the intersection of North 4th Street
 and Hwy 385 in the town of Cheyenne
 Wells, go North on Hwy 385 for 2.26
 miles to C.R. T - Now go West on C.R. T
 for 1 mile to C.R. 43 - Now go North on
 C.R. 43 for 2640' or 0.5 miles - Now go
 East along trail for 2005' or 0.4 miles -
 now go North through field for 948' or
 0.2 miles to staked location.

Map Legend

(T)	= Staked / proposed Top Hole Location drill site (THL)
(B)	= Proposed Bottom Hole Location (BHL)
(M)	= Set or Found Alum Mon
X	= Fence
— PL —	= Overhead Power Line