



FILE NO: CH095164	COMPANY WELL FIELD COUNTY	WPX ENERGY WPX ENERGY GM 422-28 GRAND VALLEY GARFIELD STATE CO
API NO: 05045225060000		

Ver. 3.87 28 GS 96W GM 323-28 PAD H&P 318	LOCATION: SHL: 1550' FSL & 2306' FWL BHL: 1897' FNL & 2294' FWL SEC 28 TWP 6S RGE 96W	OTHER SERVICES BOND LOG
--	--	----------------------------

PERMANENT DATUM LOG MEASURED FROM DRILL. MEAS. FROM	GL ELEVATION 5476 FT KB 24 FT ABOVE P.D. KB	ELEVATIONS: KB 5500 FT DF GL 5476 FT
---	---	---

DATE	02-Mar-2015
RUN	1
SERVICE ORDER	US095164
DEPTH DRILLER	7199 FT
DEPTH LOGGER	7164 FT
BOTTOM LOGGED INTERVAL	7154 FT
TOP LOGGED INTERVAL	3836 FT
TIME STARTED	13:00
TIME FINISHED	18:00
OPERATOR RIG TIME	5 HOURS
TYPE OF FLUID IN HOLE	WATER
FLUID DENSITY	NA
FLUID SALINITY	NA
FLUID LEVEL	49 FT
LOGGED CEMENT TOP	NA
WELLHEAD PRESSURE	0 PSI
MAXIMUM HOLE DEVIATION	NA
NOMINAL LOGGING SPEED	10 FMIN
MAX. RECORDED TEMP.	231 DEGF
REFERENCE LOG	BAKER HUGHES BOND LOG
REFERENCE LOG DATE	02-Mar-2015
EQUIP. NO.	HL-6670
LOCATION	GRAND JCT.
RECORDED BY	NEWELL
WITNESSED BY	KYLE KOHL

IN MAKING INTERPRETATIONS OF LOGS OUR EMPLOYEES WILL GIVE THE CUSTOMER THE BENEFIT OF THEIR BEST JUDGEMENT. BUT SINCE ALL INTERPRETATIONS ARE OPINIONS BASED ON INFERENCES FROM ELECTRICAL OR OTHER MEASUREMENTS, WE CANNOT, AND WE DO NOT GUARANTEE THE ACCURACY OR CORRECTNESS OF ANY INTERPRETATION. WE SHALL NOT BE LIABLE OR RESPONSIBLE FOR ANY LOSS, COST, DAMAGES, OR EXPENSES WHATSOEVER INCURRED OR SUSTAINED BY THE CUSTOMER RESULTING FROM ANY INTERPRETATION MADE BY ANY OF OUR EMPLOYEES.

BOREHOLE RECORD		
BIT SIZE	FROM	TO
13.5 IN	24 FT	1151 FT
8.75 IN	1151 FT	7213 FT

CASING RECORD				
SIZE	WEIGHT	GRADE	FROM	TO
9.625 IN			24 FT	1151 FT
4.5 IN	11.6 LB/F	I-80	24 FT	7213 FT

REMARKS

RUN 1 TRIP 1: All data on this log is shifted and depth matched using the Gamma Ray curve to the Baker Hughes bond log dated 02/MAR/2015 at the client's request.

The depth matching process creates potential for collar lengths to vary from those recorded on other cased hole wireline units without a Gamma Ray reference.

The amount of linear shift is 3 feet.

Logged in PNC-3D mode.

BHT = 231 degF
SJ = 3875' - 3897'

EQUIPMENT DATA

RUN	TRIP	TOOL	SERIES NO.	SERIAL NO.	POSITION
1	1	PCM	8250EA	10586851	FREE
1	1	TEL/CCL	8248ED	10460262	FREE
1	1	GR	2812LA	11701636	FREE
1	1	RPM	8281EA	10273848	FREE
1	1	RPM	8283PA	10169251	FREE
1	1	RPM	8281FA	10191667	FREE
1	1	TEMP	8255XA	11774568	FREE

MAIN SECTION PNC-3D MODE

ECLIPS 6.2i ECLIPS General Release Rel 6.2i Wed Jun 12 12:21:40 CDT 2013

Updates: 1 Patches: 4

Plotted: Mon Mar 2 17:42:25 2015

PARAMETER AND FILTER SUMMARY REPORT

FILE: /dat1a/CH095164/n354h02.prm
 LOGGING MODE: DEPTH DIRECTION: UP
 TOP DEPTH: 3827.750 ft BOTTOM DEPTH: 7159.372 ft

SYMMETRIC FILTER

MEASUREMENT TYPE	PARAMETER	VALUE	UNITS	INTERVAL (ft)
GR	FILTER ()	medium (1)		TOP BOTTOM

RPM PROCESSING

MEASUREMENT TYPE	PARAMETER	VALUE	UNITS	INTERVAL (ft)
PNC Parameters	BOREHOLE CONTENTS	FLUID		TOP BOTTOM
	OPEN/CASED HOLE	CASED HOLE		" "
	BOREHOLE SIZE	8.75	in	" "
	CASING SIZE	4.50	in	" "
	MATRIX	SANDSTONE		" "
	CORRECTION BUFFER	11		" "

CURVE DESCRIPTION REPORT

CURVE NAME	CREATION DATE	CURVE DESCRIPTION
F1:CCL	Mar 2 14:04:10 2015	CASING COLLAR LOCATOR
F1:GR	Mar 2 14:04:10 2015	GAMMA RAY
F1:ISS	Mar 2 14:04:10 2015	INELASTIC SHORT SPACE COUNT RATE
F1:LS	Mar 2 14:04:10 2015	LONG SPACE COUNT RATE
F1:RATO	Mar 2 14:04:10 2015	SHORT/LONG SPACE COUNT RATE RATIO
F1:RICS	Mar 2 14:04:10 2015	SHORT SPACE INELASTIC TO CAPTURE COUNT RATE RATIO (ISS/CSS)
F1:SGFC	Mar 2 14:04:10 2015	CORRECTED FORMATION SIGMA
F1:SS	Mar 2 14:04:10 2015	SHORT SPACE COUNT RATE

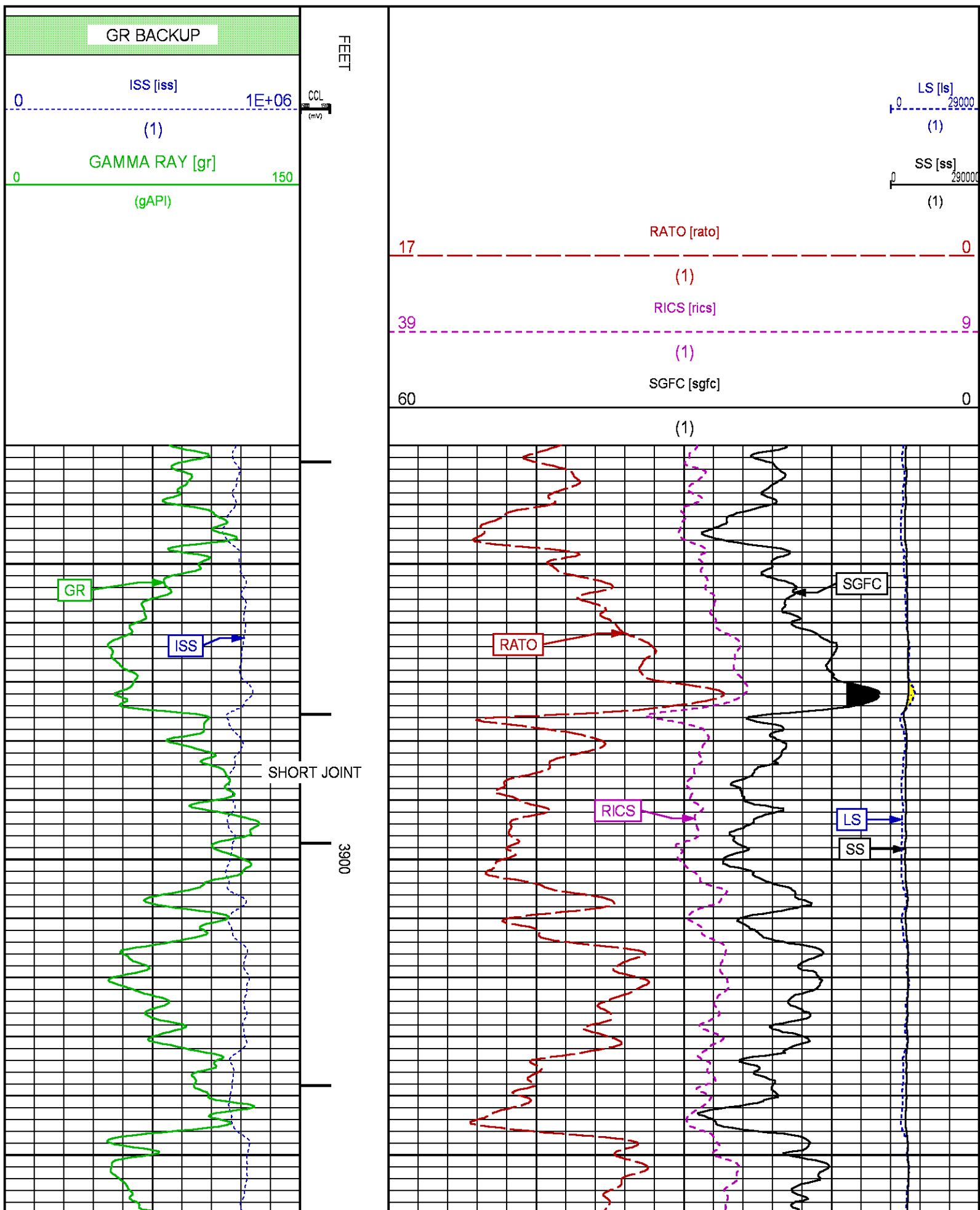
CURVE MEASURE POINT OFFSET

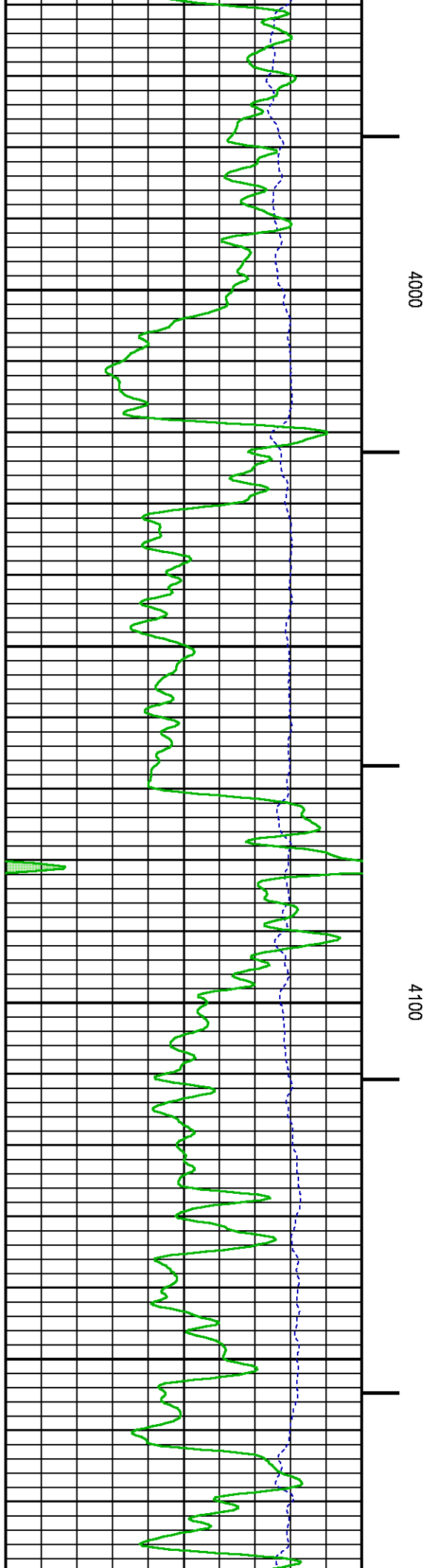
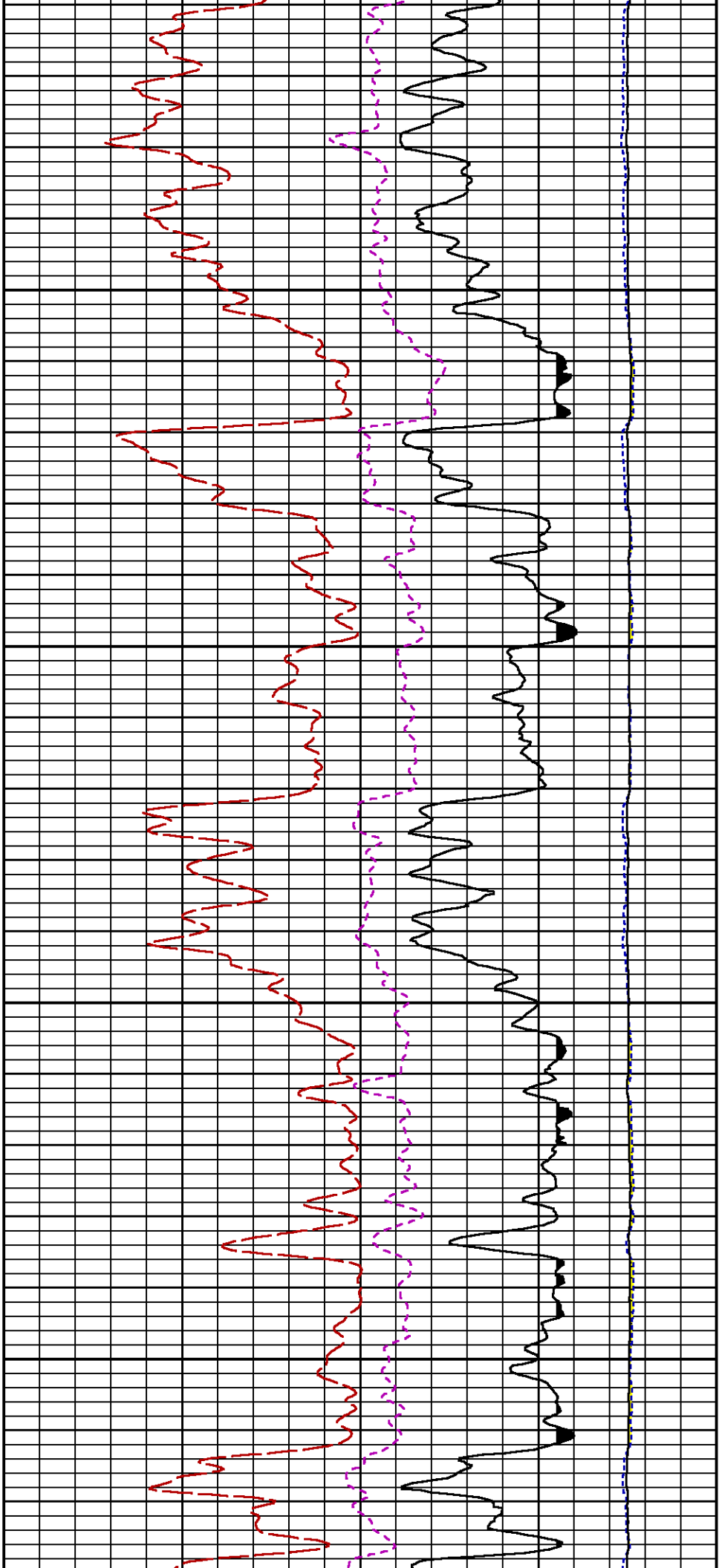
CURVE	OFFSET (ft)	CURVE	OFFSET (ft)	CURVE	OFFSET (ft)	CURVE	OFFSET (ft)
CCL	25.00	ISS	12.75	RATO	12.75	SGFC	12.75
GR	22.75	LS	12.75	RICS	12.75	SS	12.75

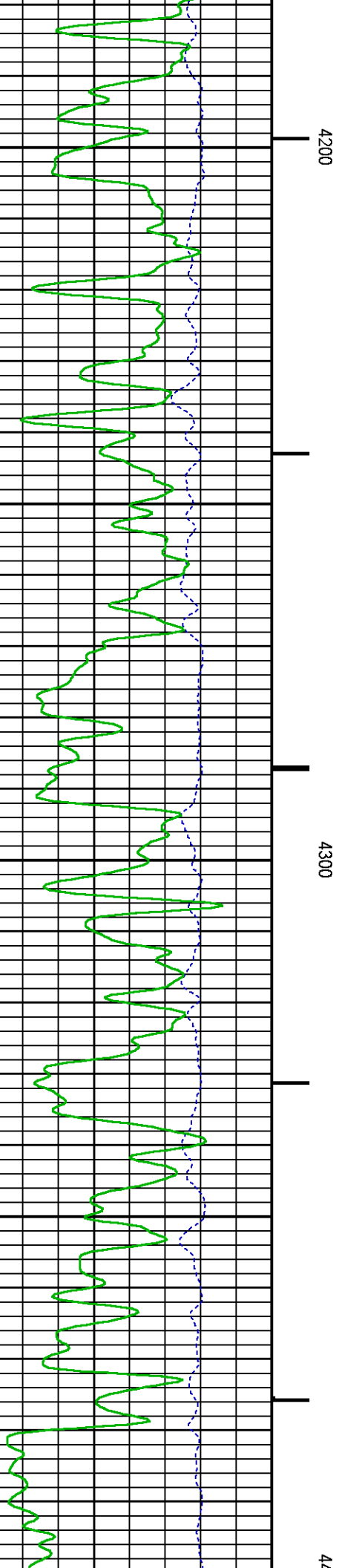
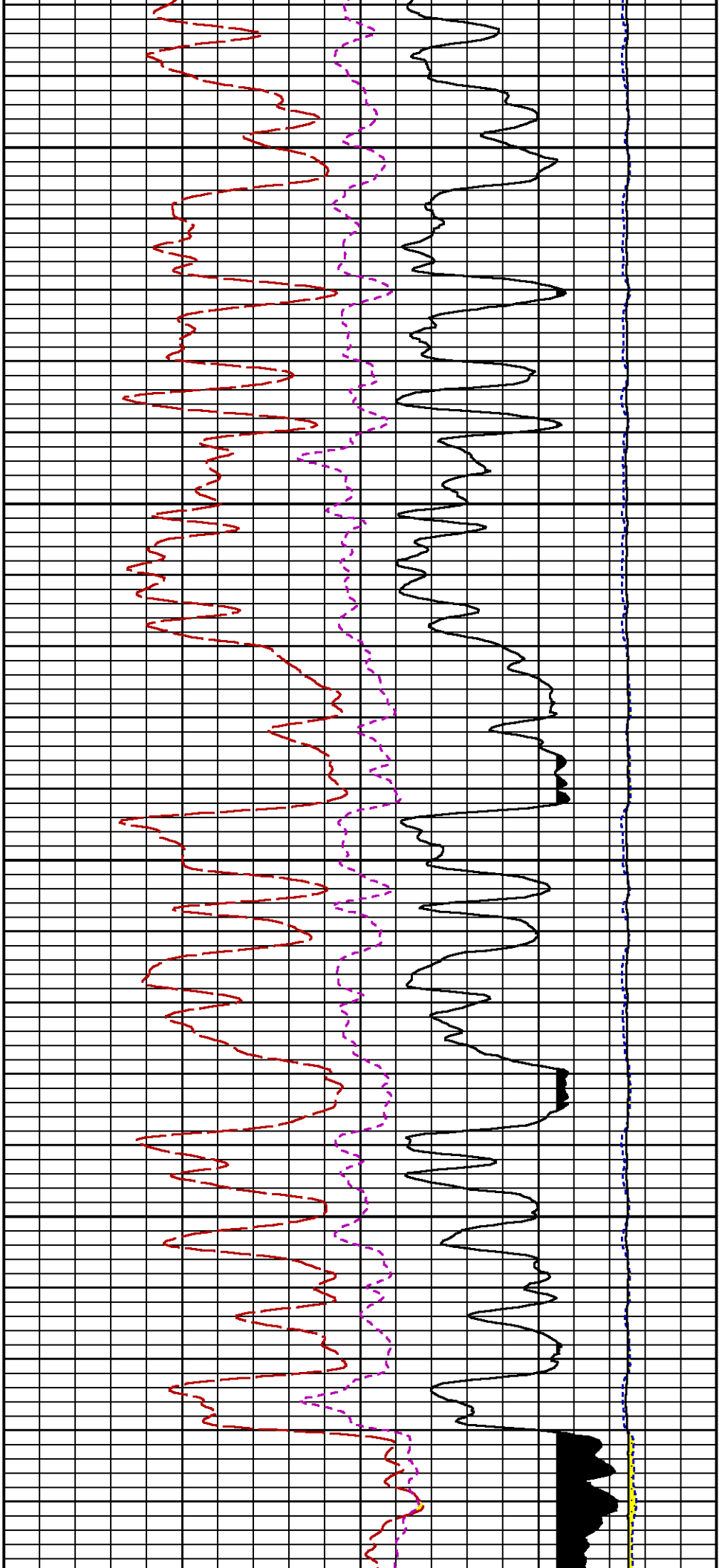
Presentation : HL6670:/dat1a/CH095164/422RPM_MAIN.fvpdf [5"/100' Scale]
 Plot Interval : 3830 - 7169 Feet

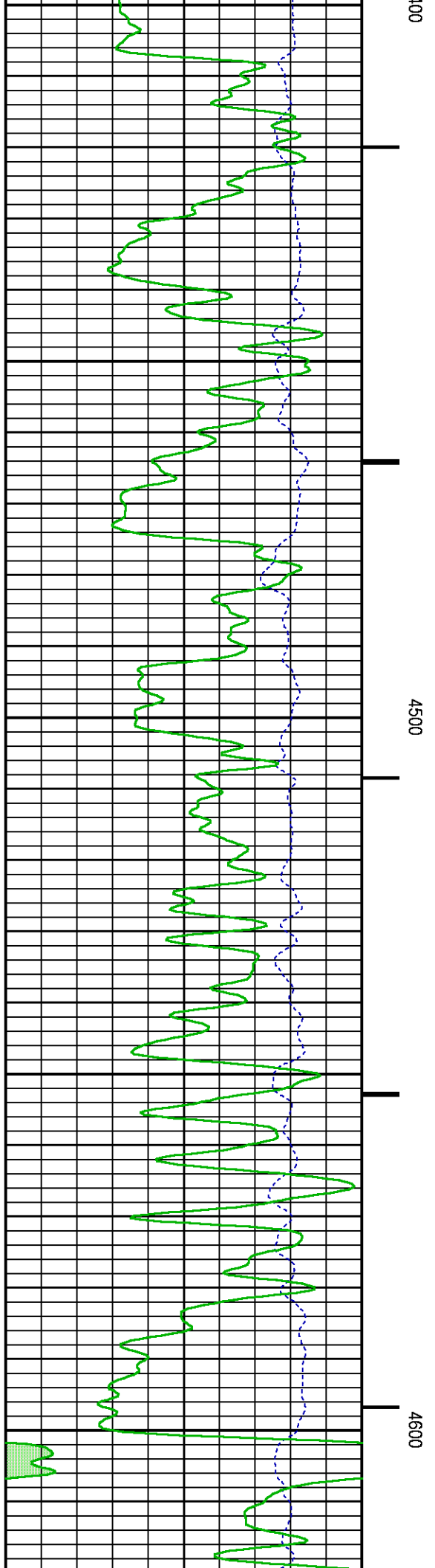
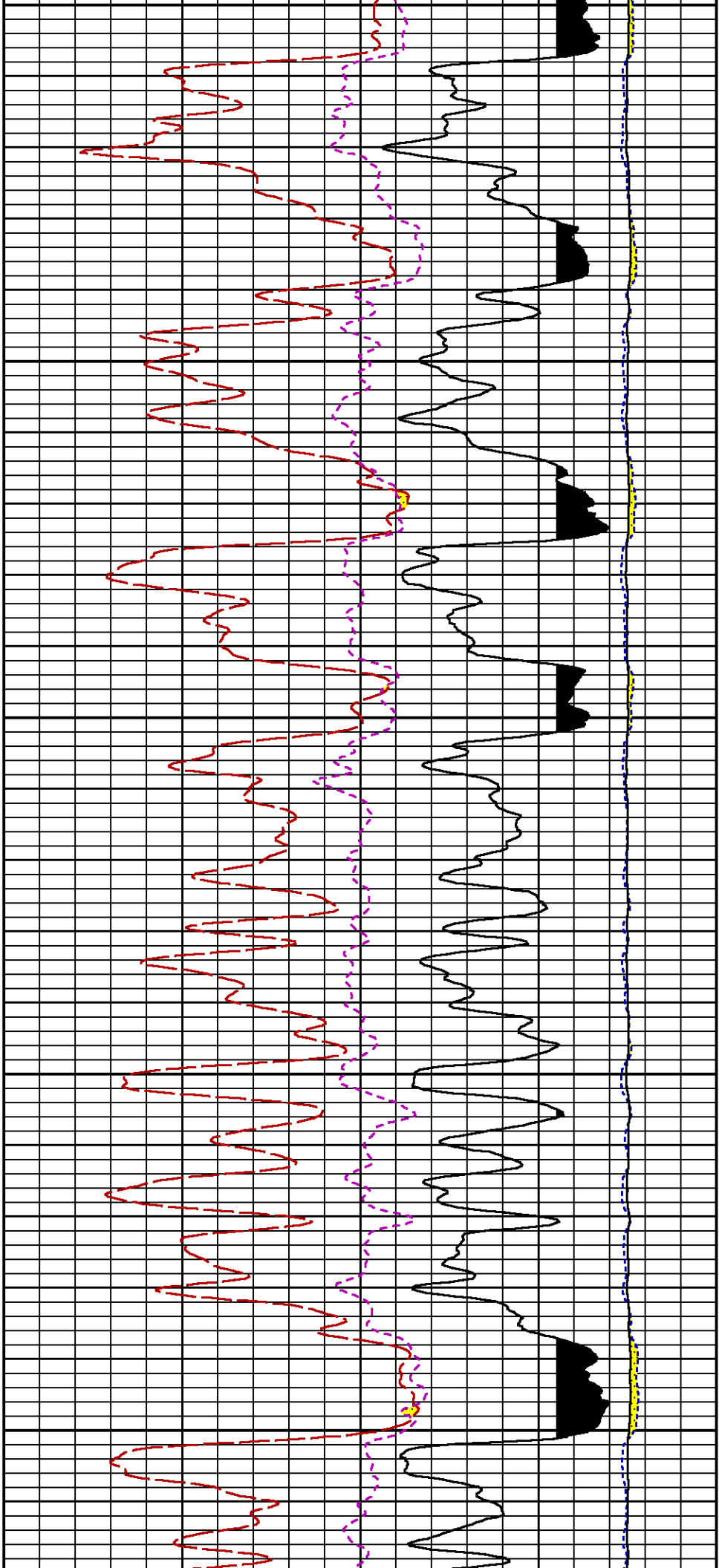
Data File 1 : F1 : HL6670:/dat1a/CH095164/422RPM_MAIN.xtf
 Created On : Mar 2 14:04:10 2015
 Company : WBY ENERGY

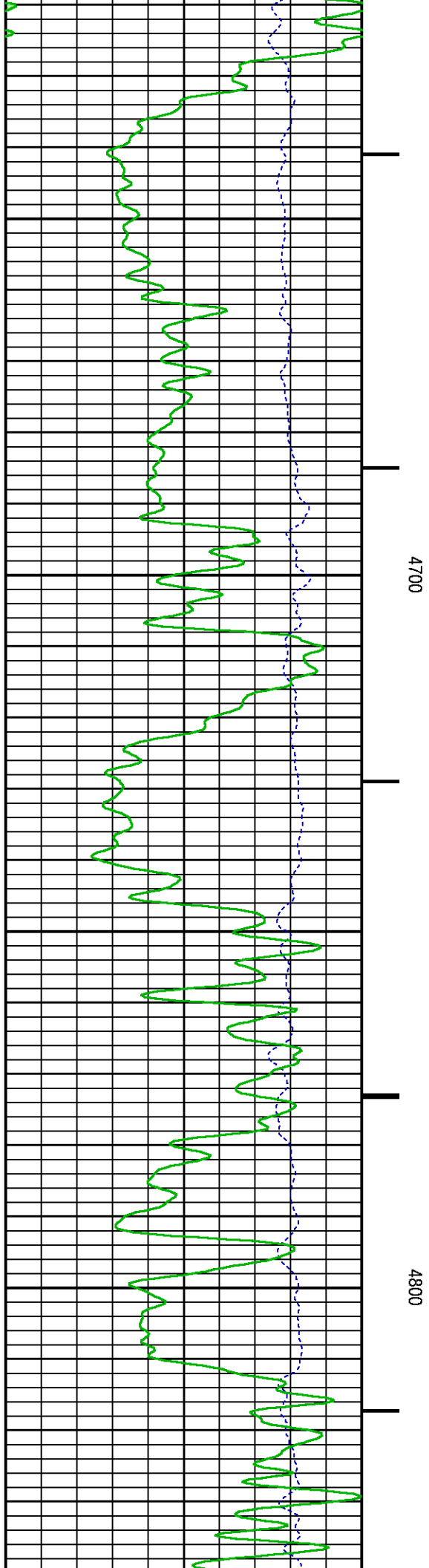
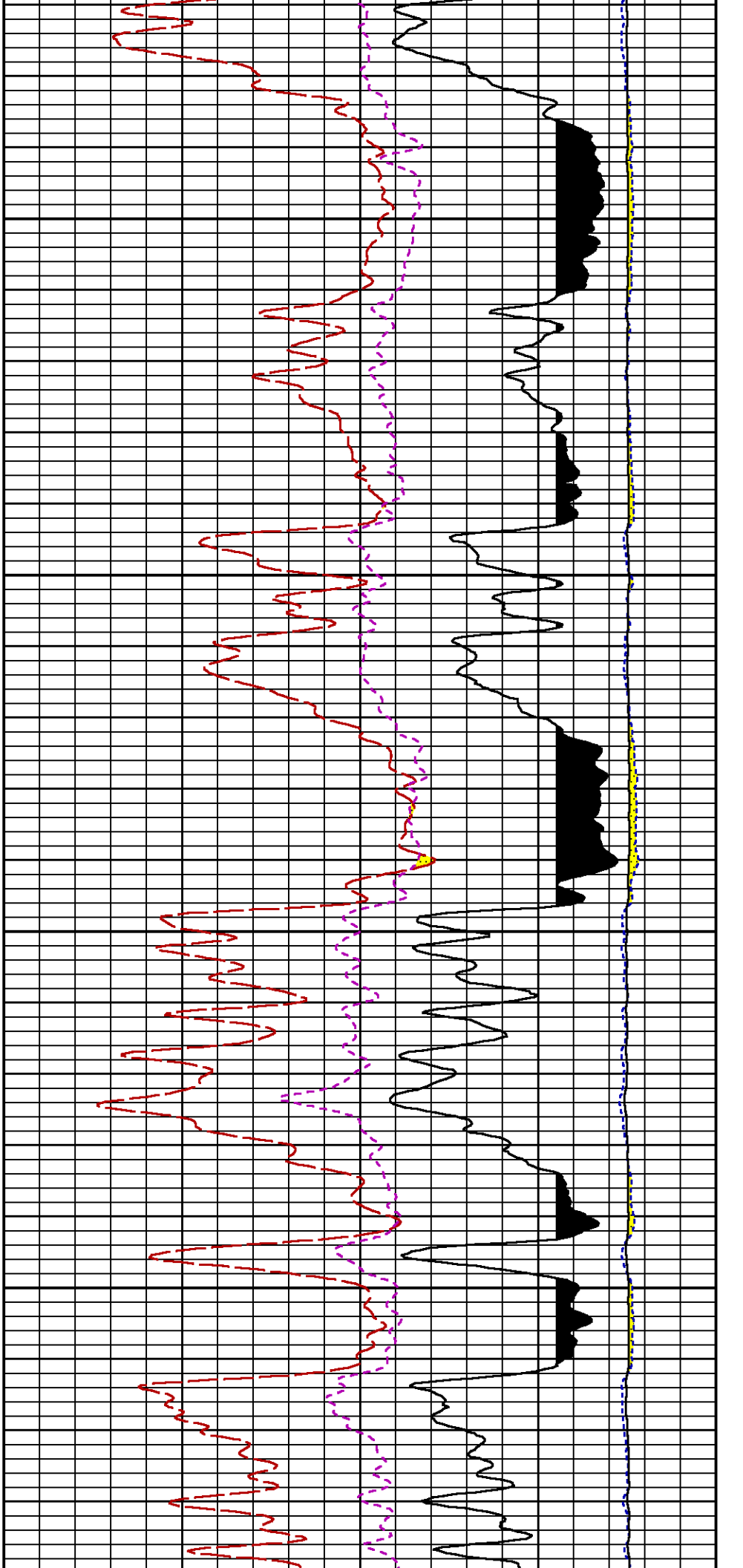
Company : WPX ENERGY
Well : WPX ENERGY GM 422-28
Field : GRAND VALLEY
File Interval : 3802.5 - 7155 Feet
OCT : n354h

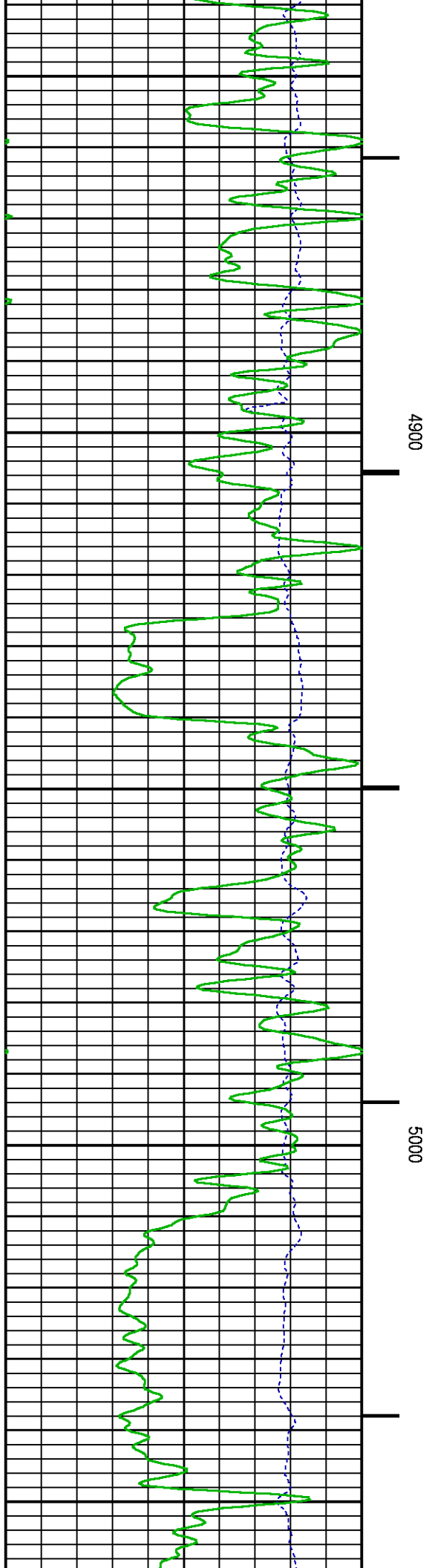
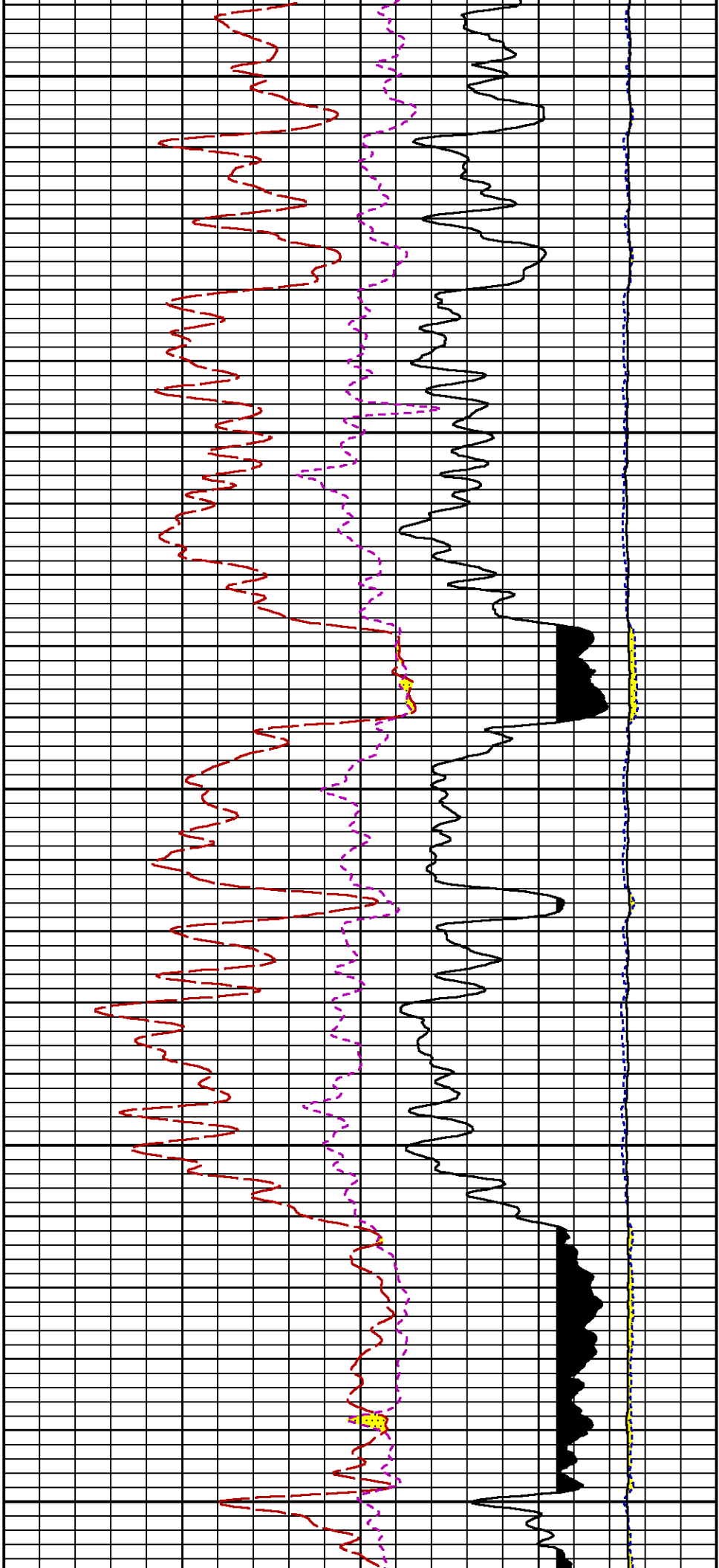


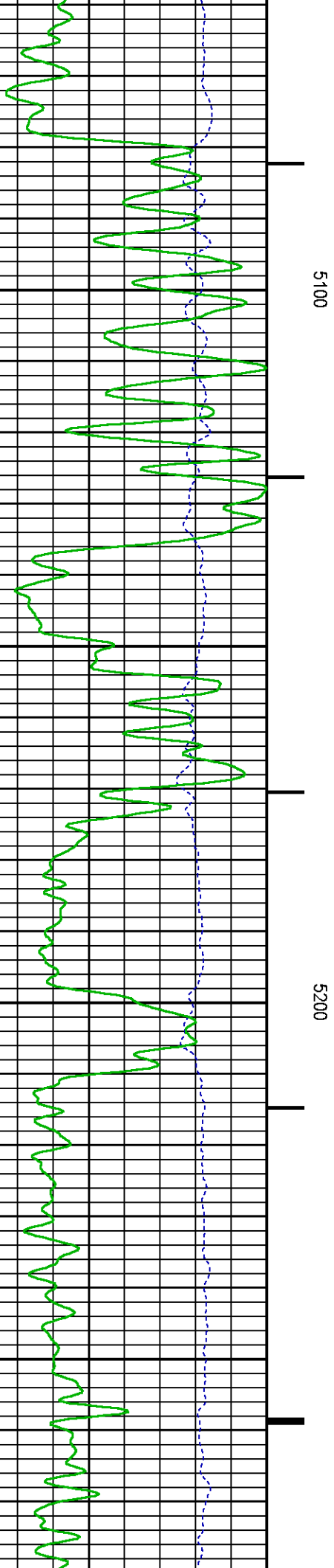
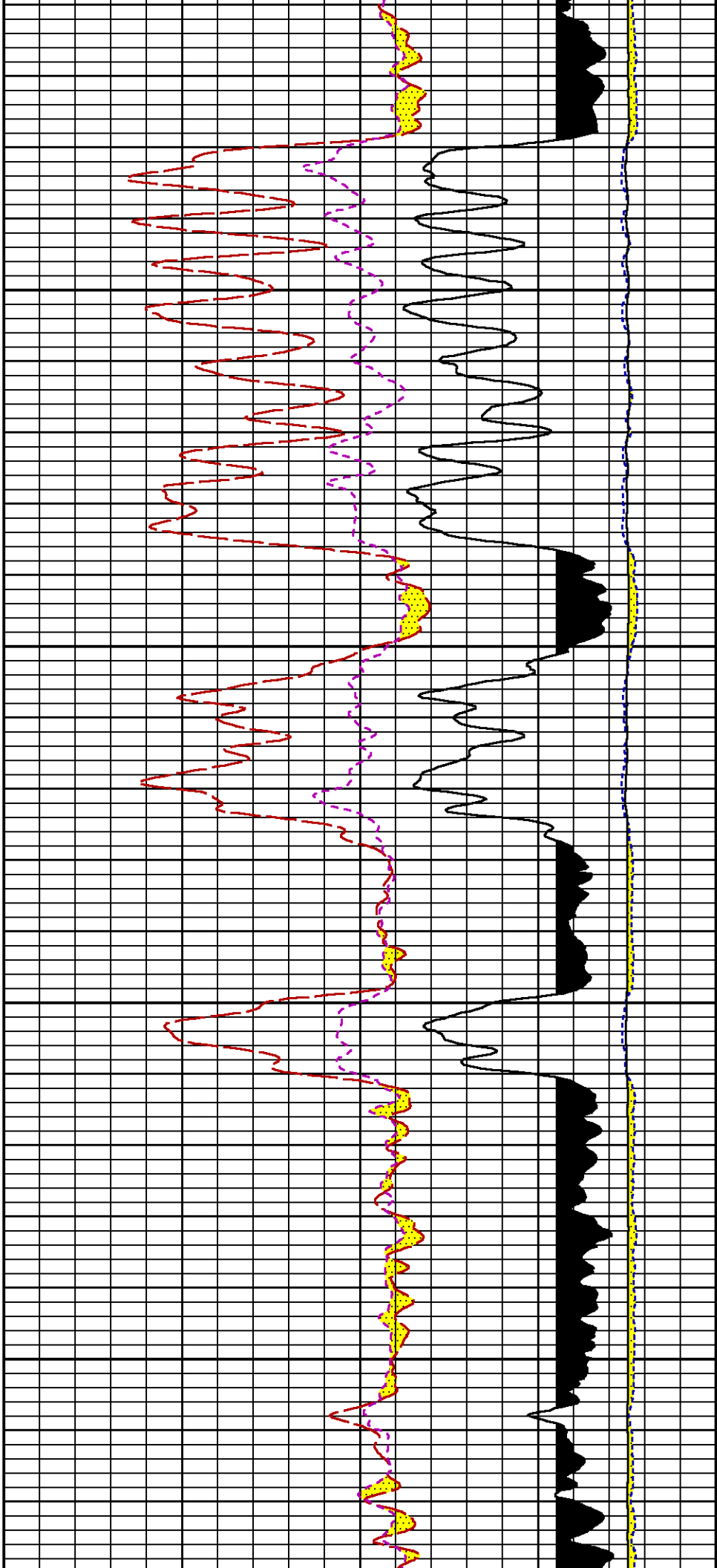


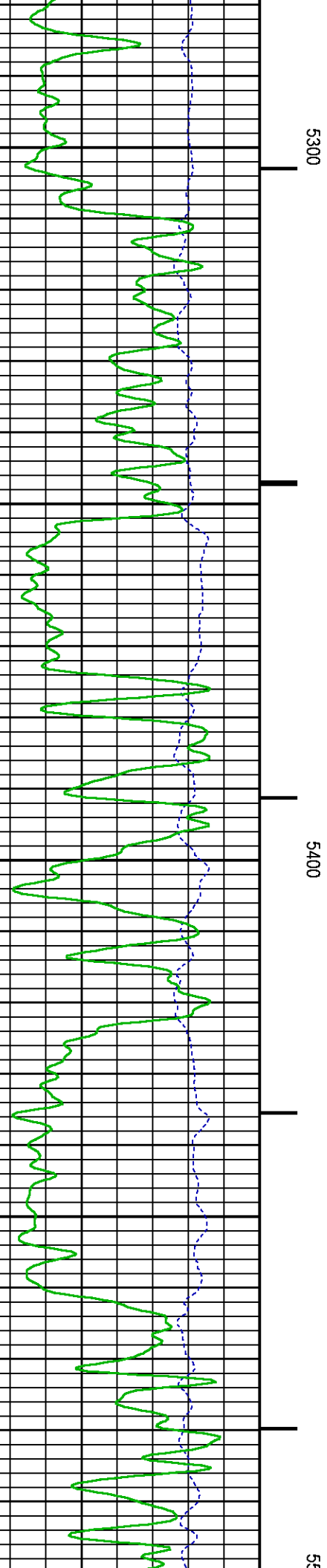
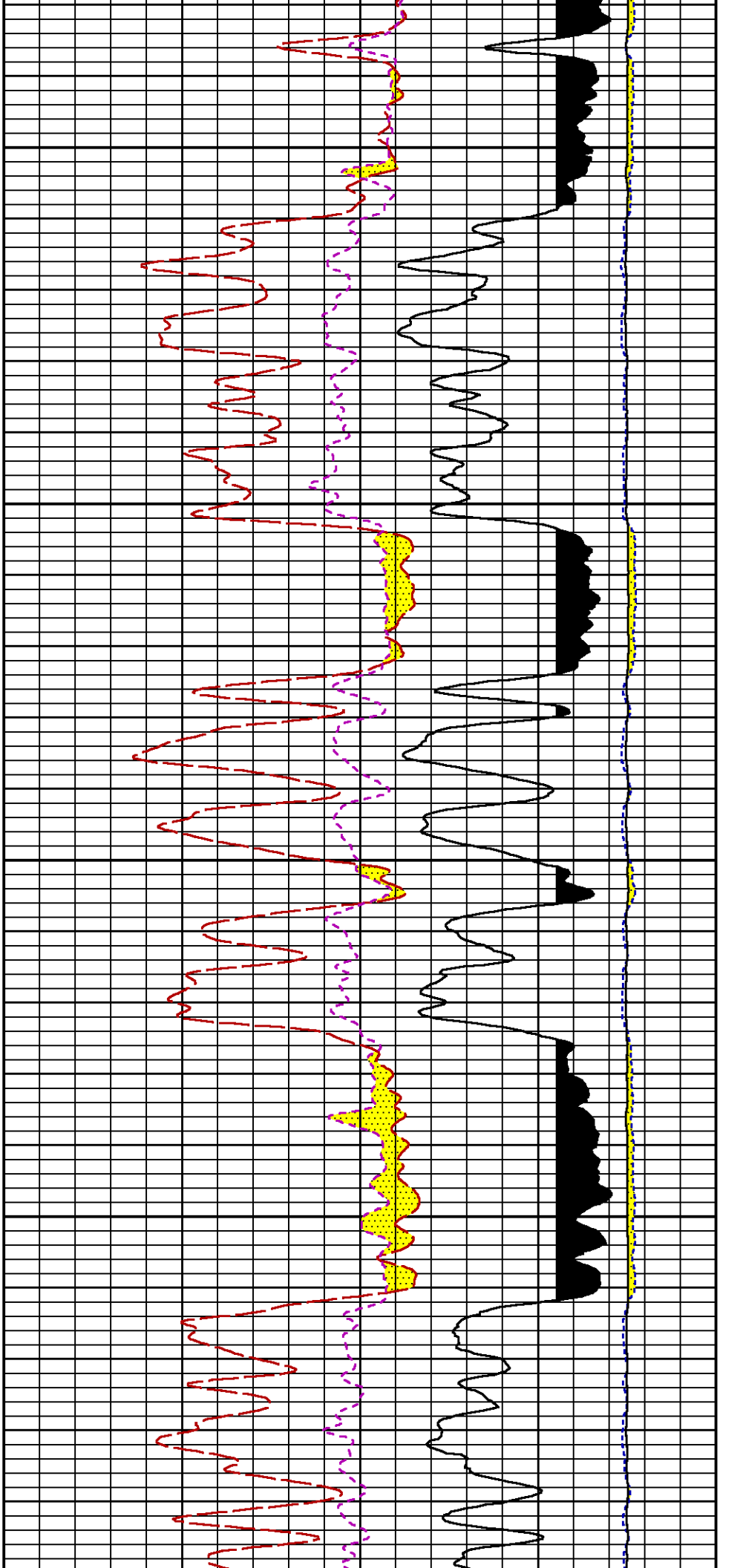


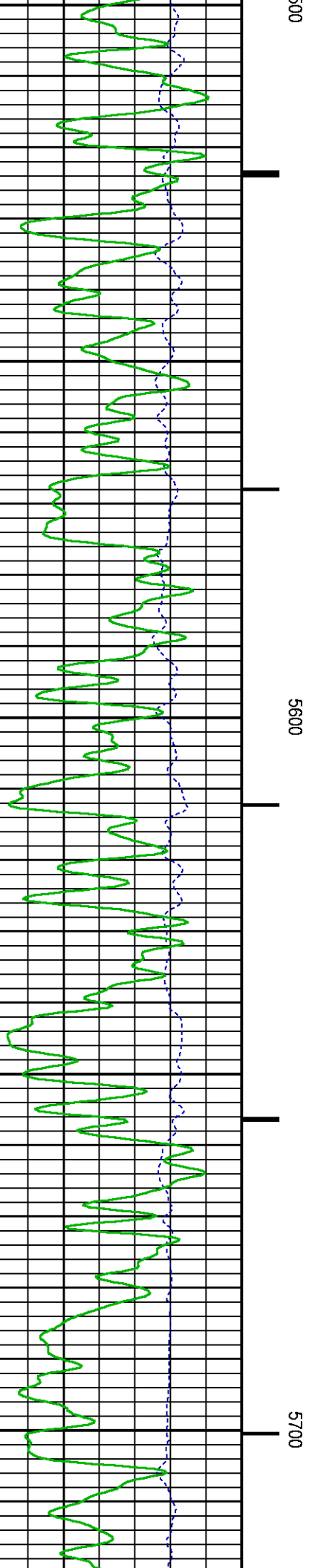
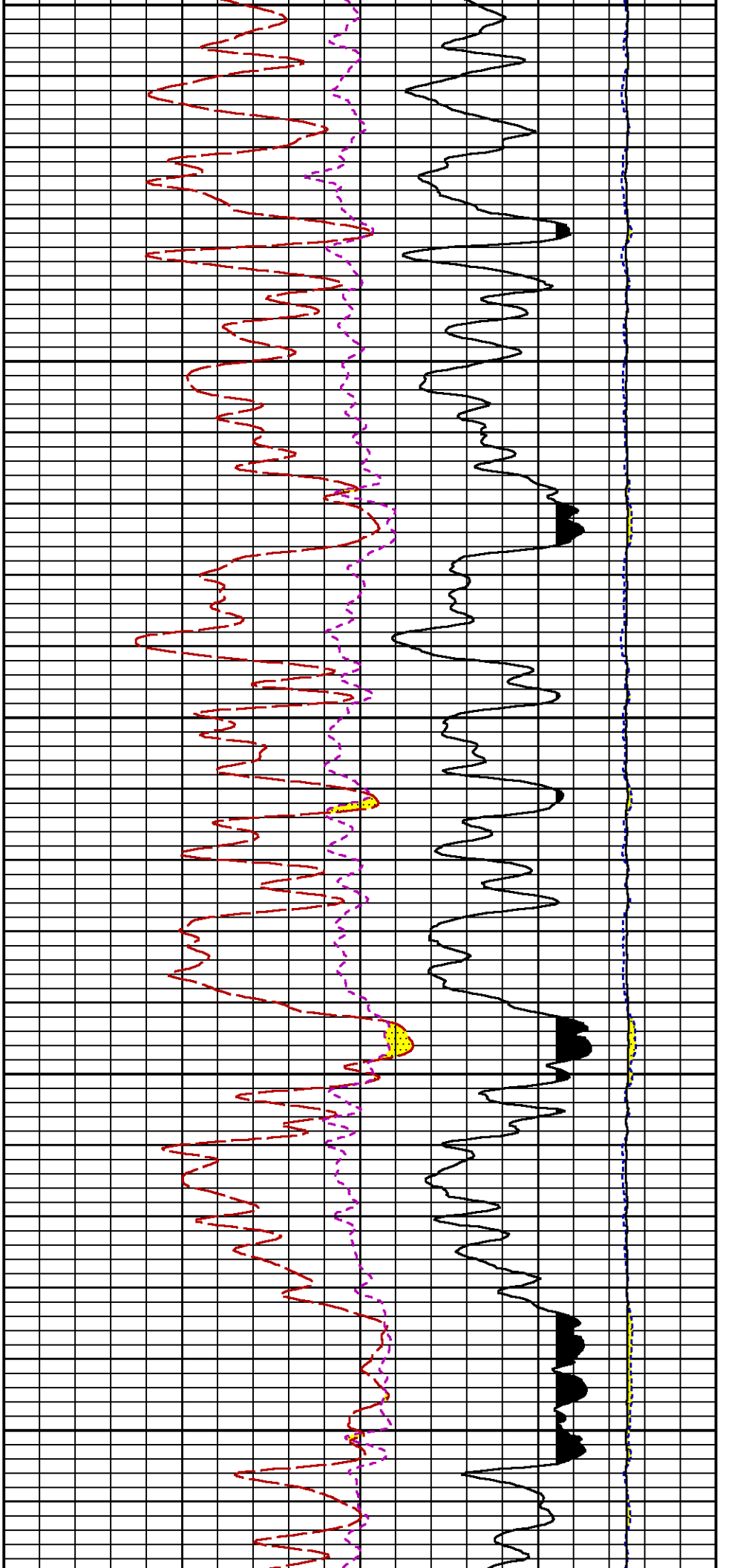


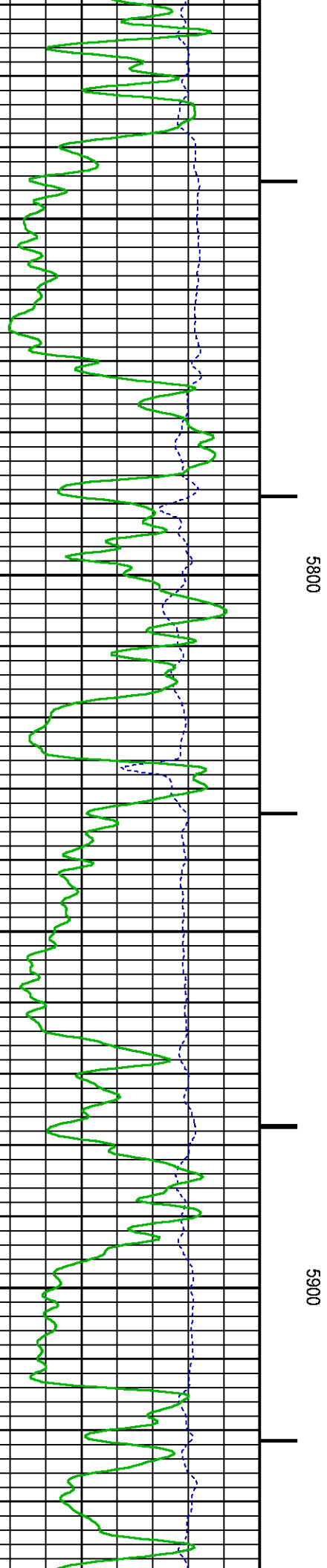
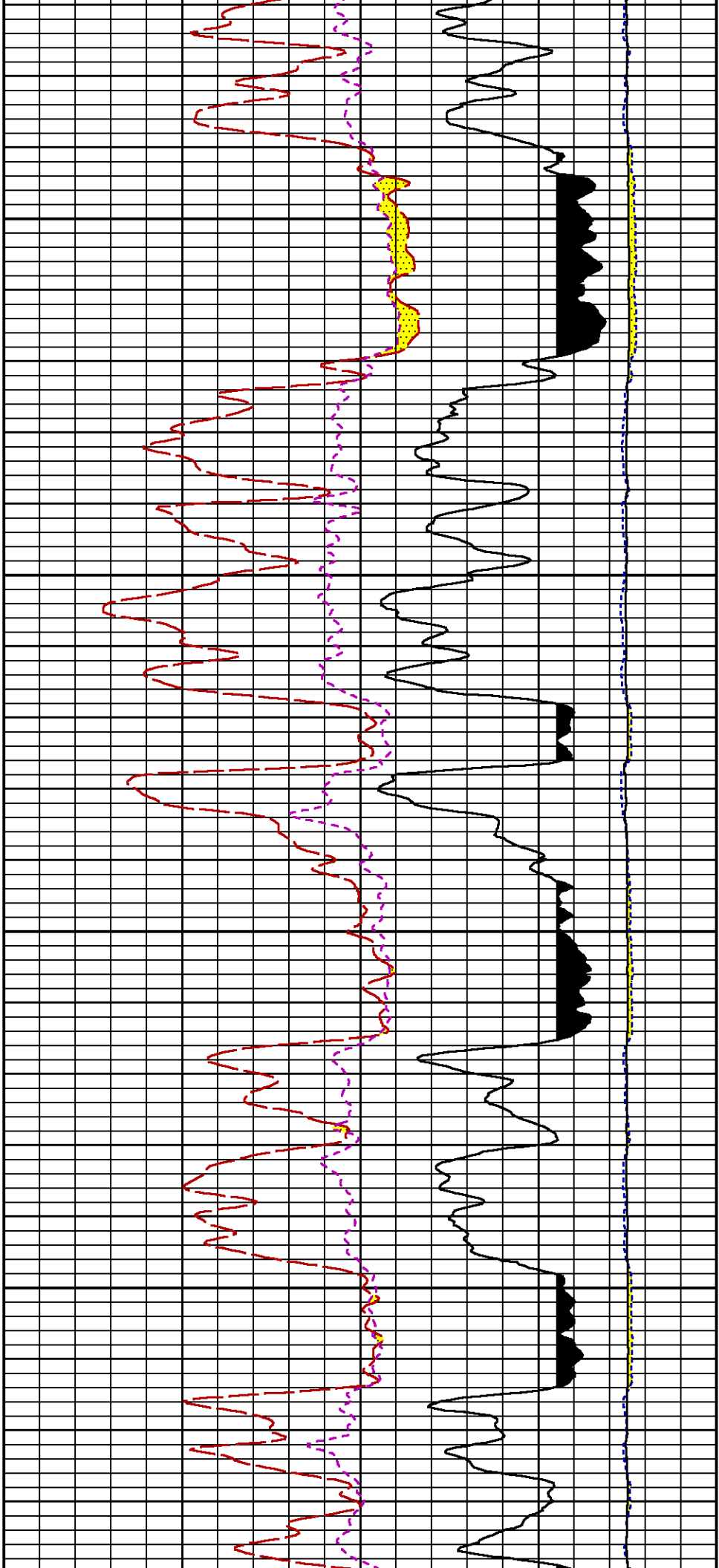


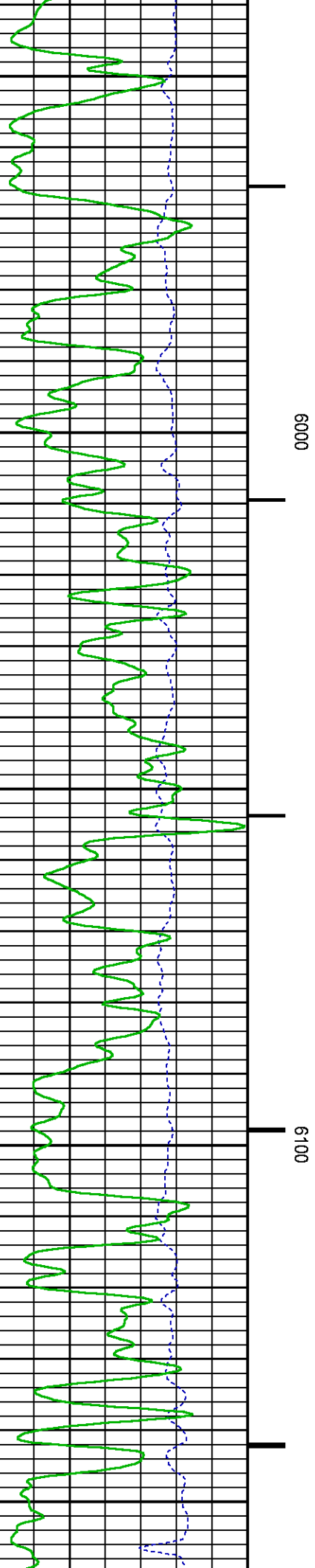
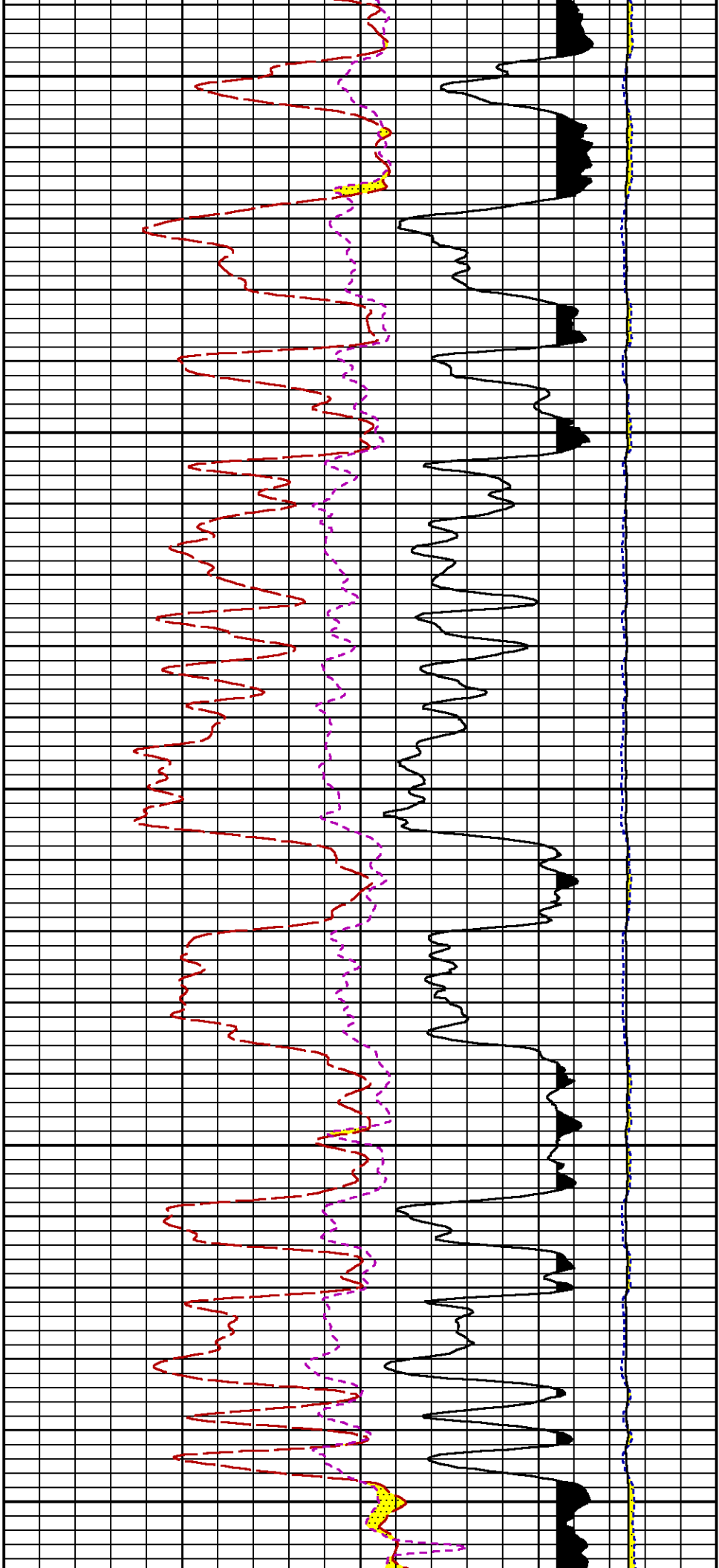


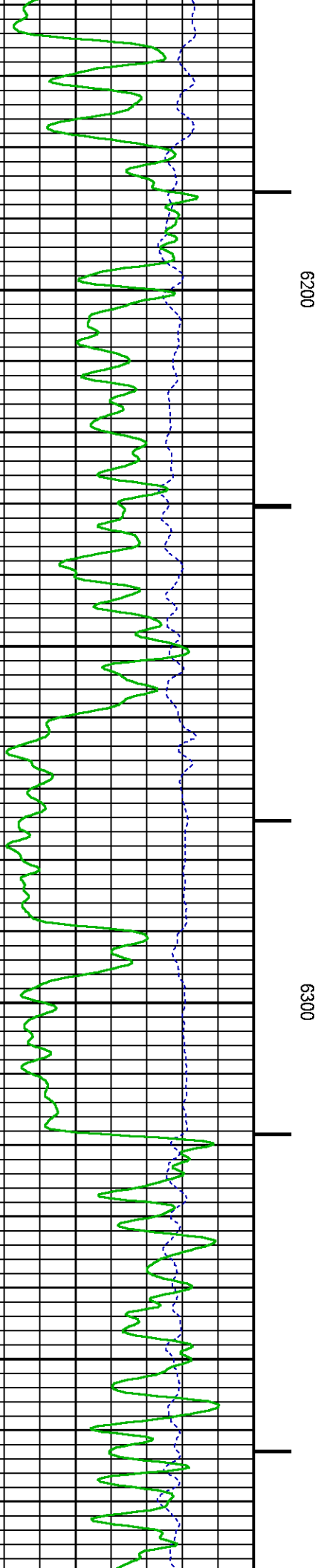
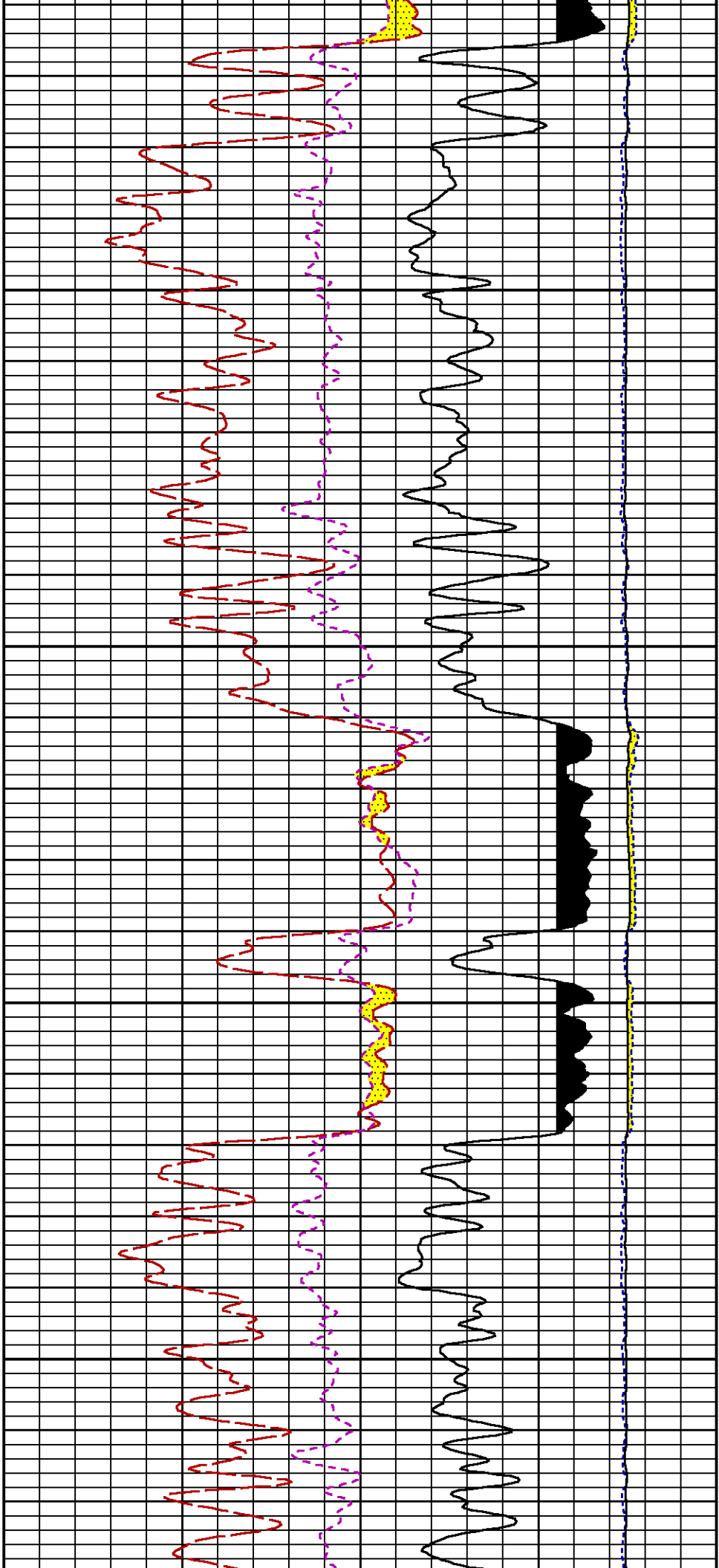


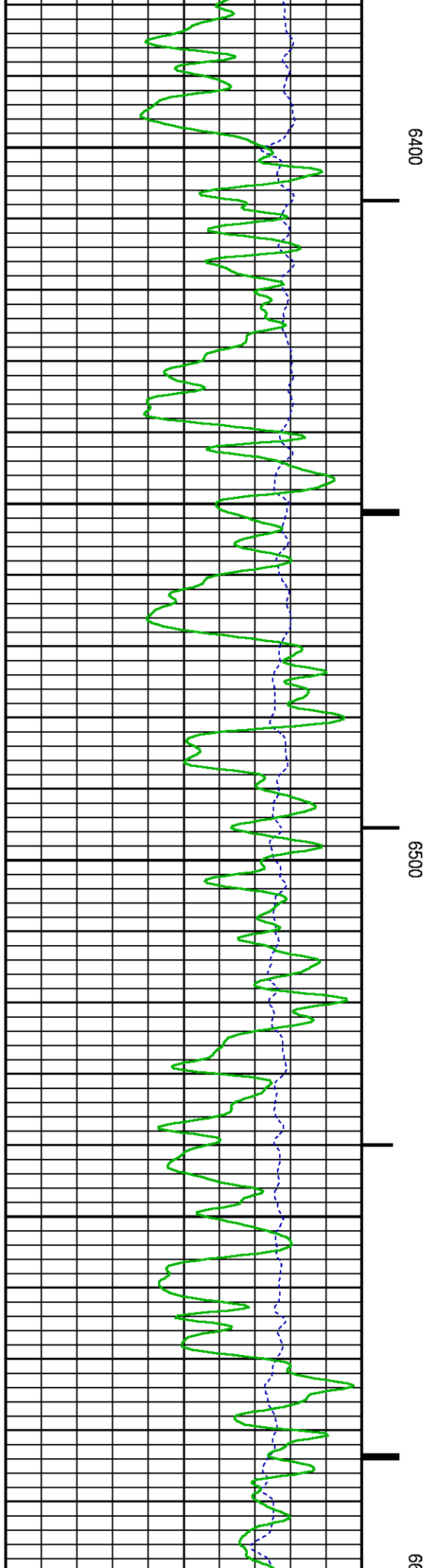
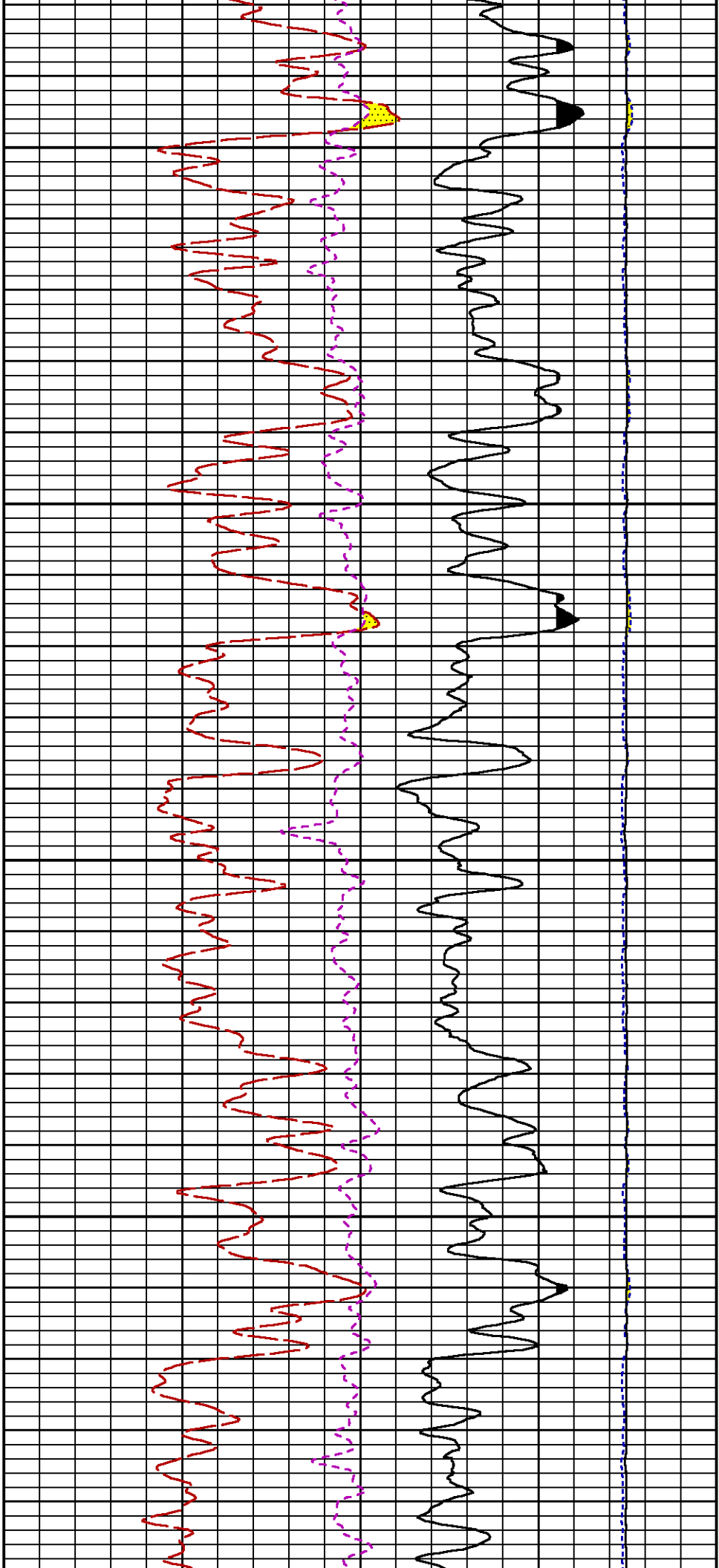


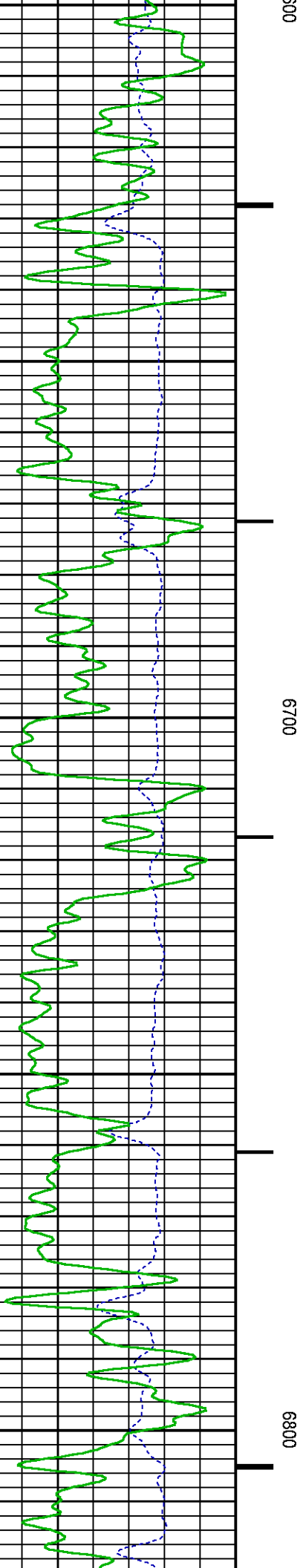
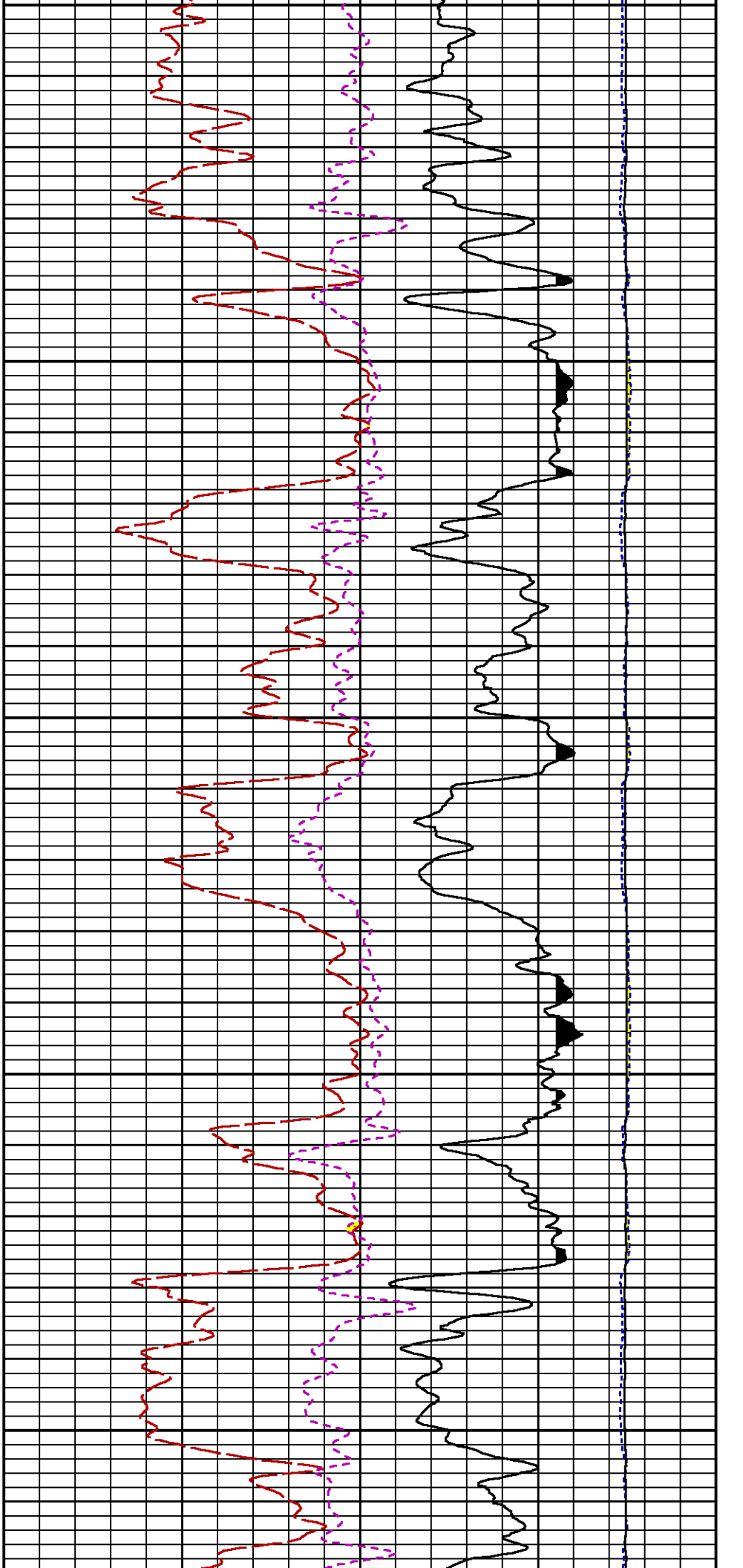


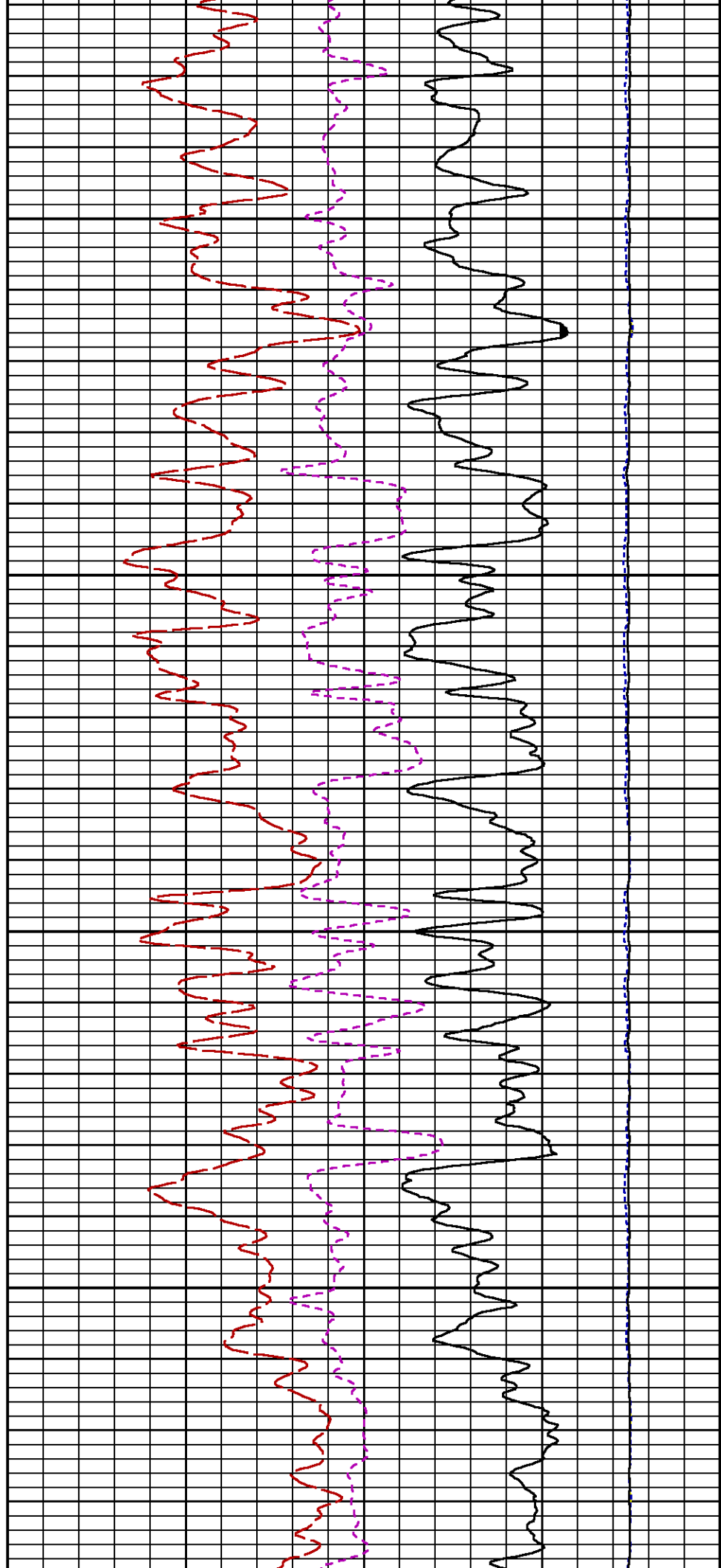
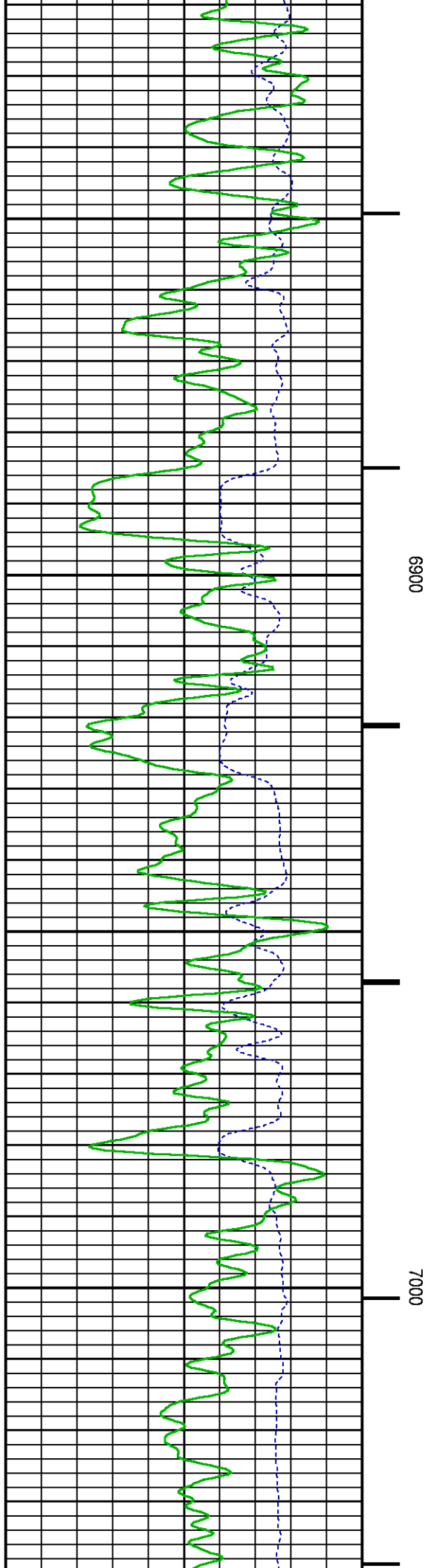


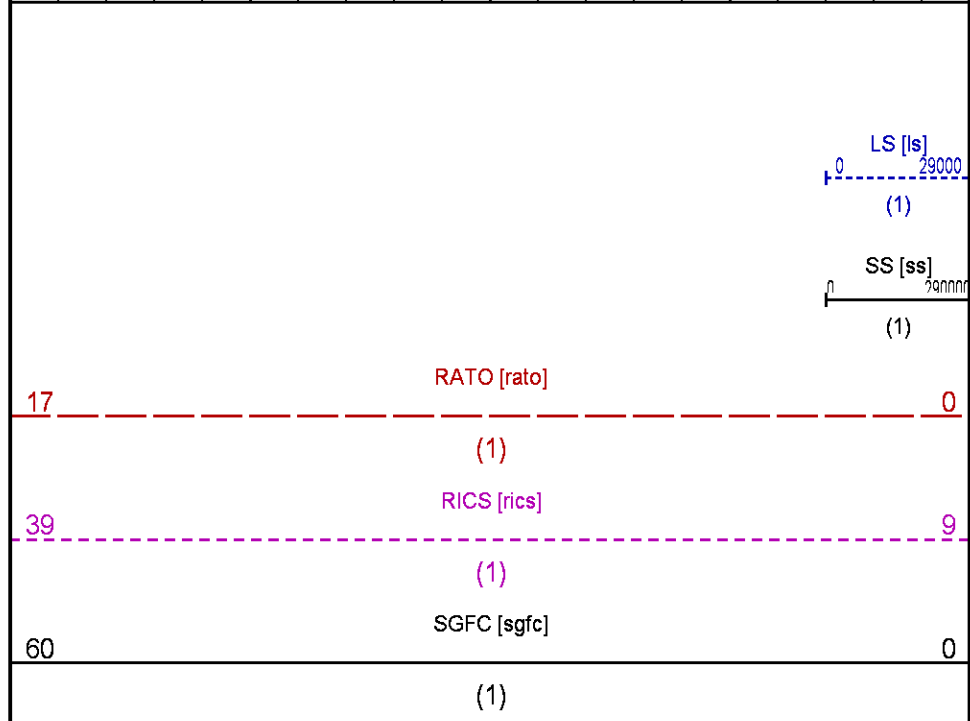
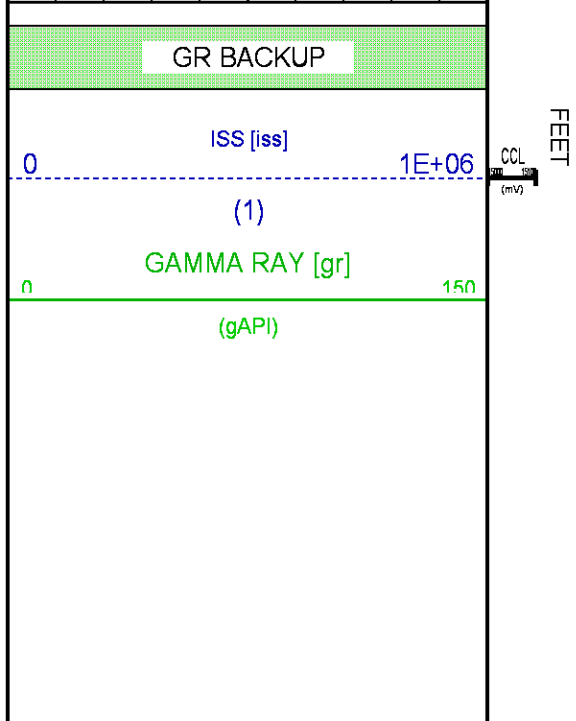
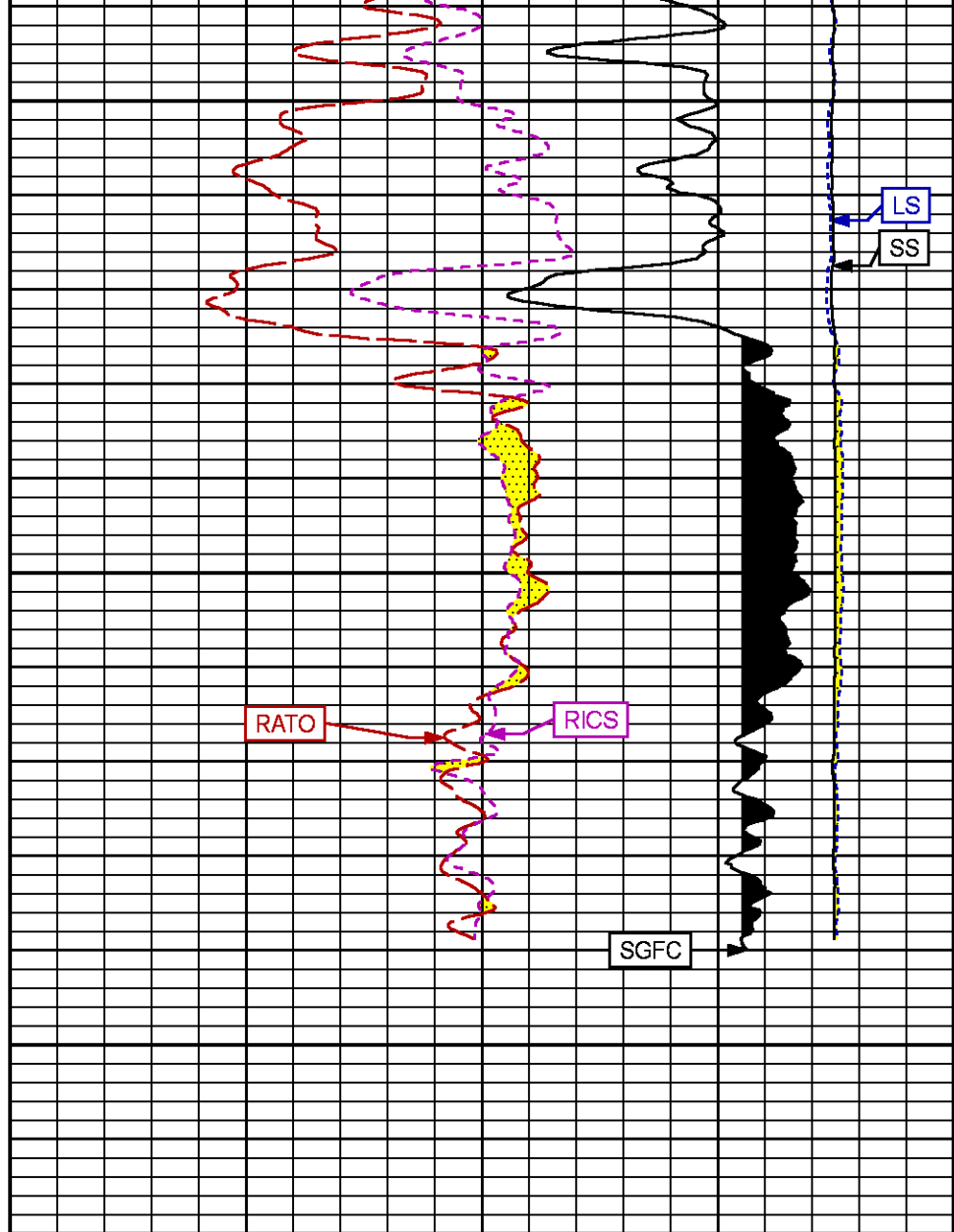
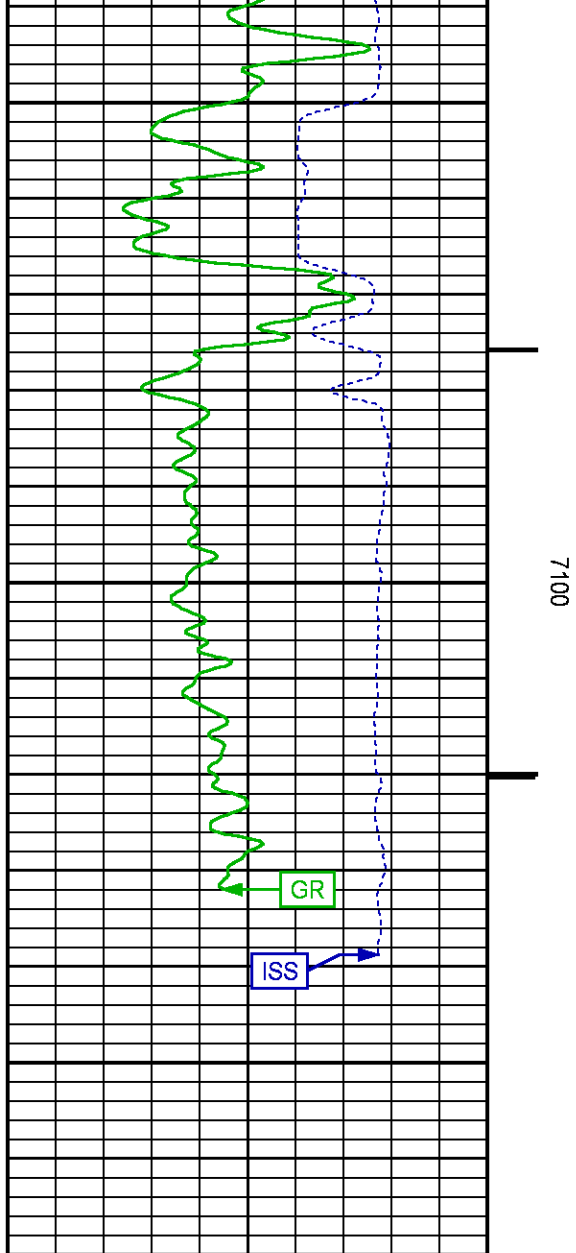












REPEAT SECTION PNC-3D MODE

ECLIPS 6.2i ECLIPS General Release Rel 6.2i Wed Jun 12 12:21:40 CDT 2013
Updates: 1 Patches: 4

Plotted: Mon Mar 2 17:46:40 2015

PARAMETER AND FILTER SUMMARY REPORT

FILE: /dat1a/CH095164/n354h01.prm
LOGGING MODE: DEPTH DIRECTION: UP
TOP DEPTH: 6318.750 ft BOTTOM DEPTH: 6647.000 ft

SYMMETRIC FILTER

MEASUREMENT TYPE	PARAMETER	VALUE	UNITS	INTERVAL (ft)	
GR	FILTER ()	medium (1)		TOP	BOTTOM

RPM PROCESSING

MEASUREMENT TYPE	PARAMETER	VALUE	UNITS	INTERVAL (ft)	
PNC Parameters	BOREHOLE CONTENTS	FLUID		TOP	BOTTOM
	OPEN/CASED HOLE	CASED HOLE		"	"
	BOREHOLE SIZE	8.75	in	"	"
	CASING SIZE	4.50	in	"	"
	MATRIX	SANDSTONE		"	"
	CORRECTION BUFFER	11		"	"

CURVE DESCRIPTION REPORT

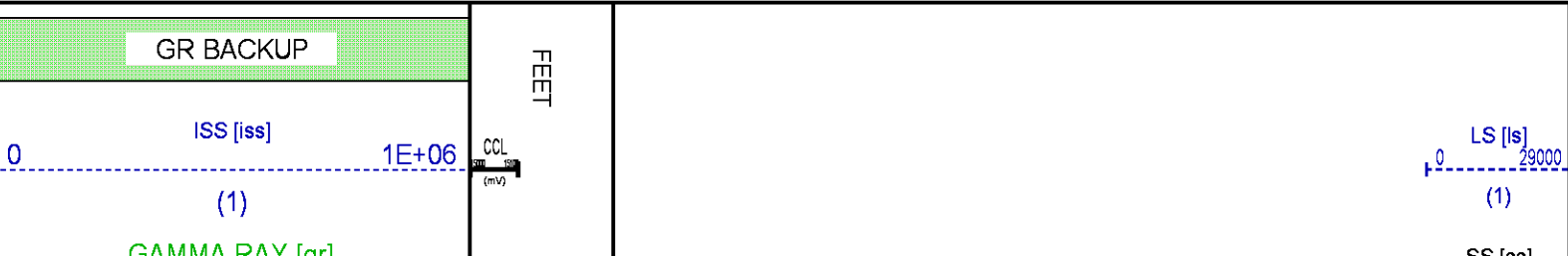
CURVE NAME	CREATION DATE	CURVE DESCRIPTION
F1:CCL	Mar 2 13:35:55 2015	CASING COLLAR LOCATOR
F1:GR	Mar 2 13:35:55 2015	GAMMA RAY
F1:ISS	Mar 2 13:35:55 2015	INELASTIC SHORT SPACE COUNT RATE
F1:LS	Mar 2 13:35:55 2015	LONG SPACE COUNT RATE
F1:RATO	Mar 2 13:35:55 2015	SHORT/LONG SPACE COUNT RATE RATIO
F1:RICS	Mar 2 13:35:55 2015	SHORT SPACE INELASTIC TO CAPTURE COUNT RATE RATIO (ISS/CSS)
F1:SGFC	Mar 2 13:35:55 2015	CORRECTED FORMATION SIGMA
F1:SS	Mar 2 13:35:55 2015	SHORT SPACE COUNT RATE

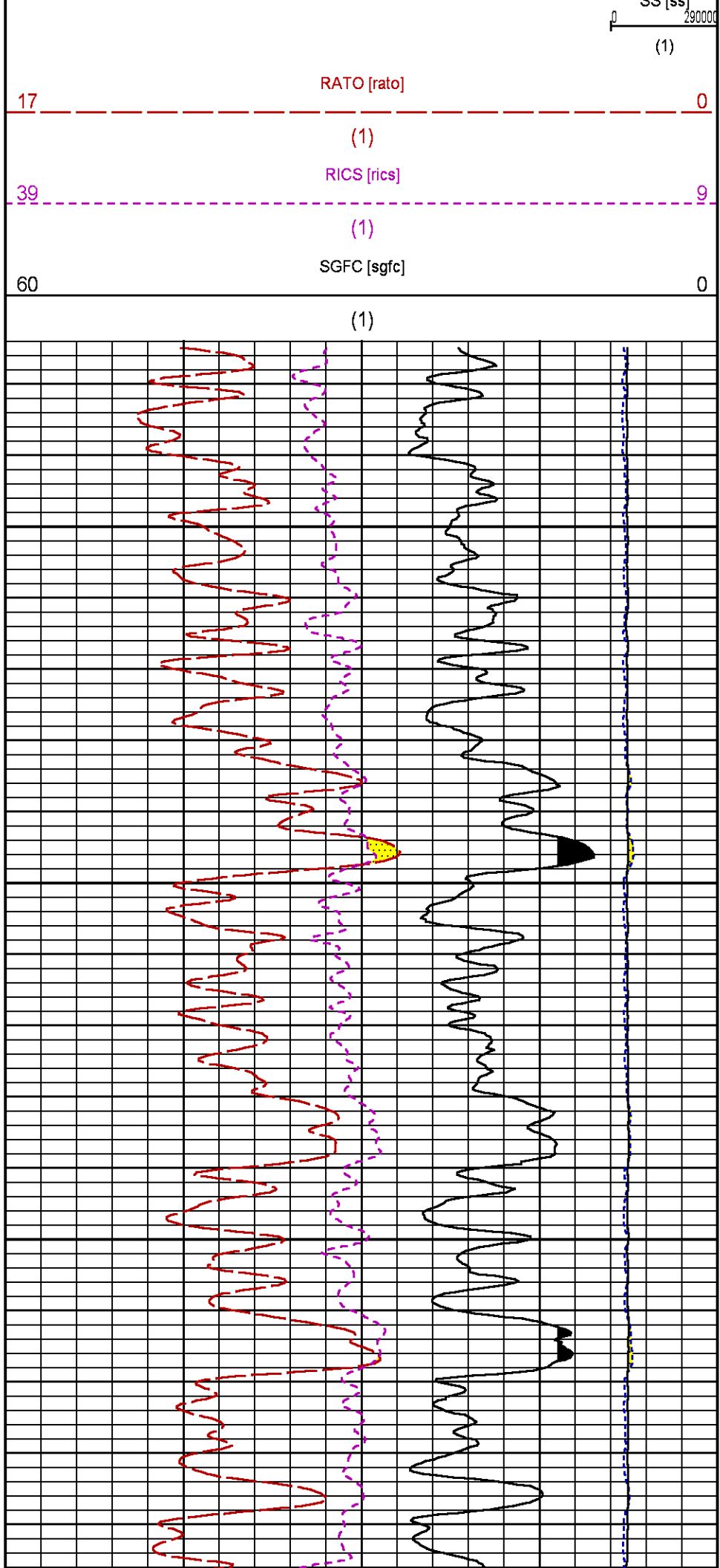
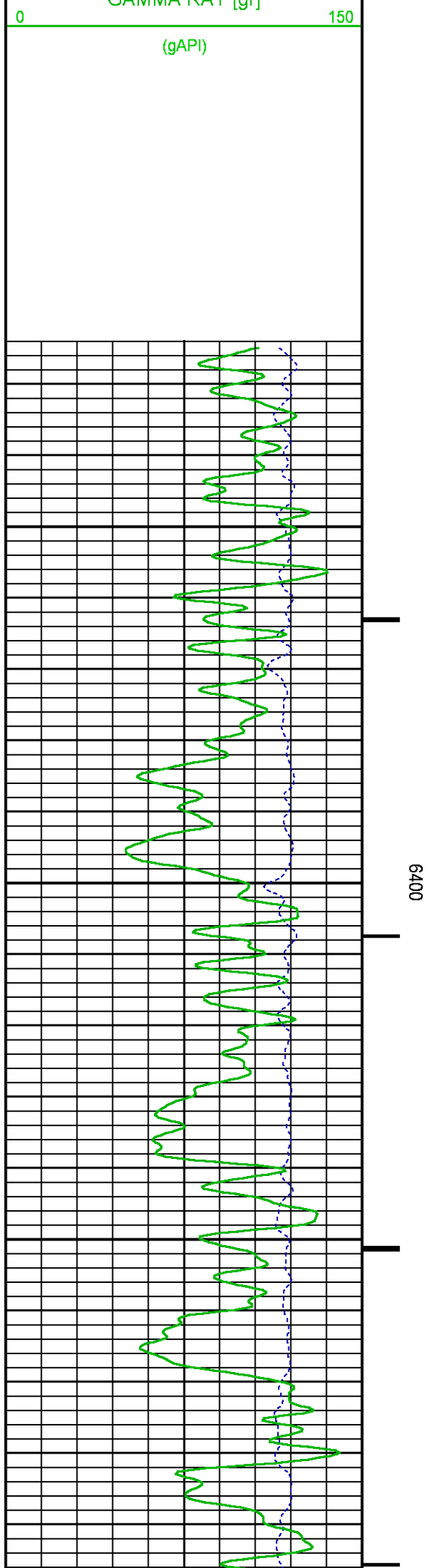
CURVE MEASURE POINT OFFSET

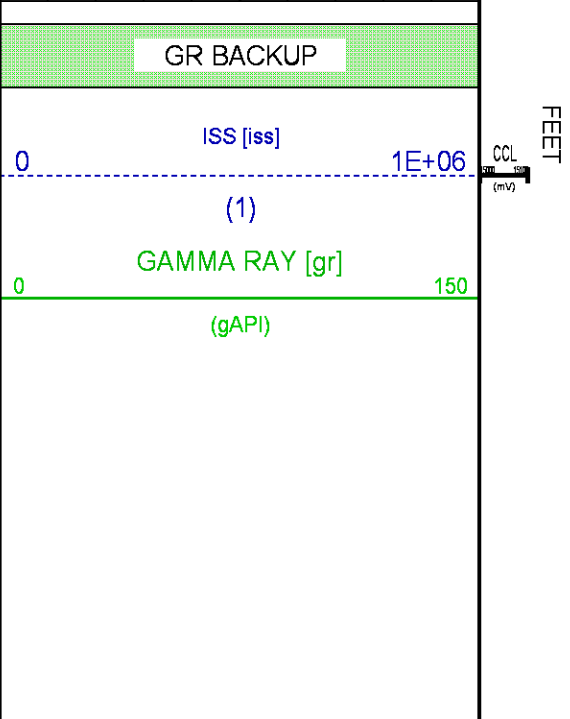
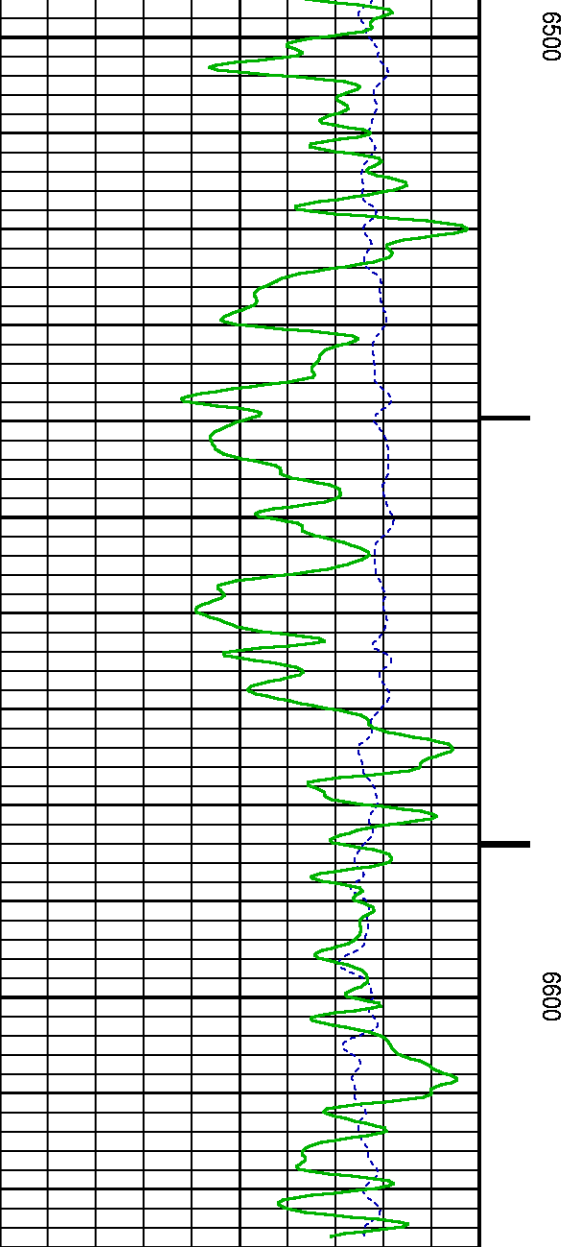
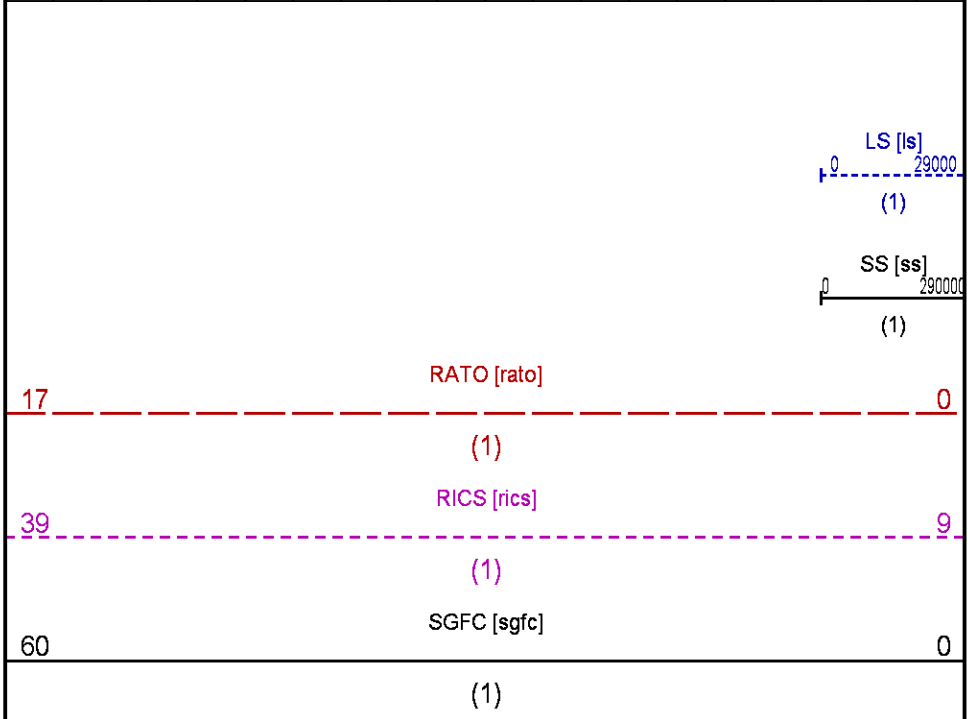
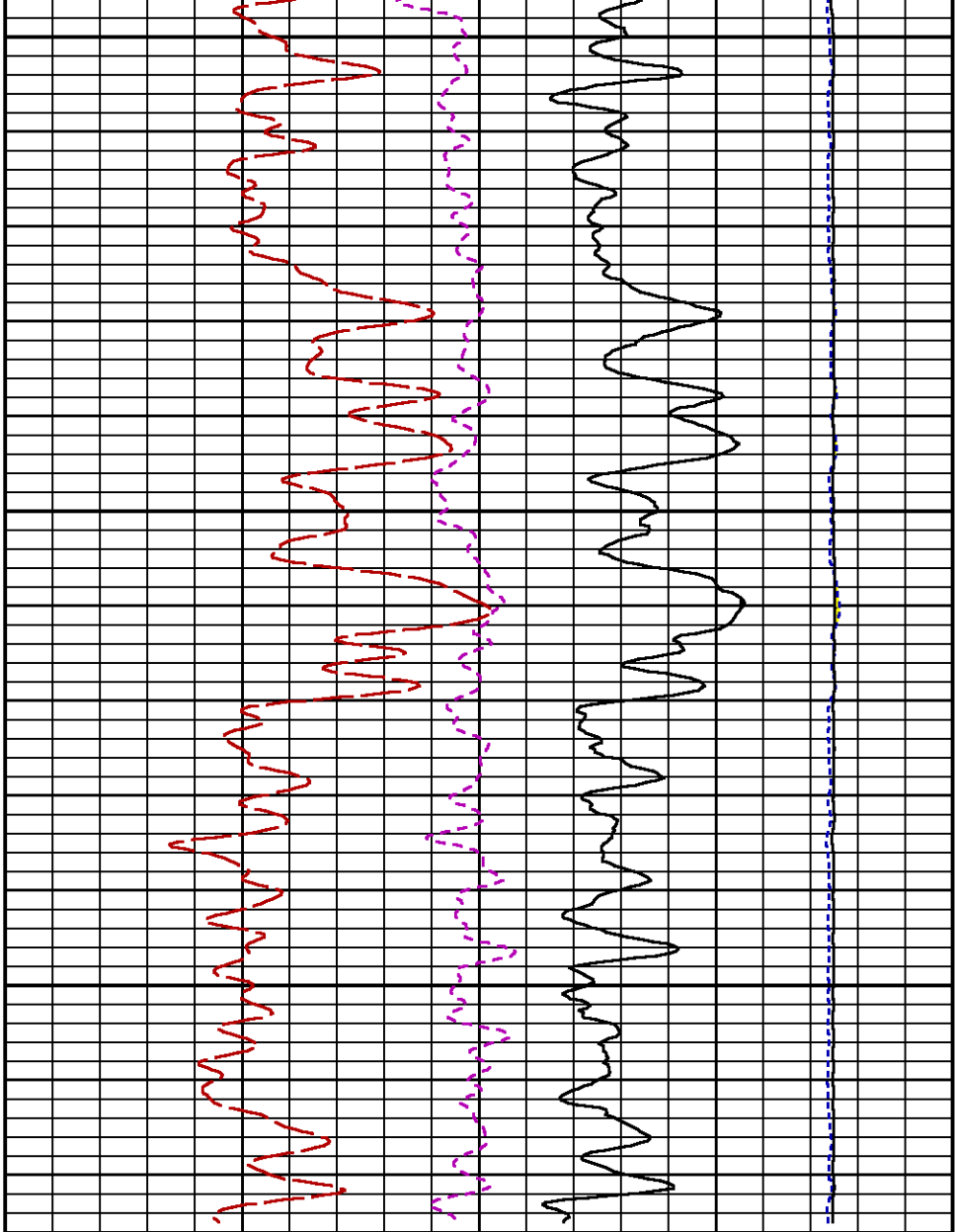
CURVE	OFFSET (ft)	CURVE	OFFSET (ft)	CURVE	OFFSET (ft)	CURVE	OFFSET (ft)
CCL	25.00	ISS	12.75	RATO	12.75	SGFC	12.75
GR	22.75	LS	12.75	RICS	12.75	SS	12.75

Presentation : HL6670:/dat1a/CH095164/422RPM_REPEAT.fvpdf [5"/100' Scale]
Plot Interval : 6325 - 6625 Feet

Data File 1 : F1 : HL6670:/dat1a/CH095164/422RPM_REPEAT.xtf
Created On : Mar 2 13:35:55 2015
Company : WPX ENERGY
Well : WPX ENERGY GM 422-28
Field : GRAND VALLEY
File Interval : 6296 - 6649 Feet
OCT : n354h







CALIBRATION / VERIFICATION SUMMARY

Source File: /dat1a/CH095164/n354h.tp1

GR PRIMARY CALIBRATION SUMMARY

TOOL #: 2812LA 11701636

DATE/TIME PERFORMED: Wed Feb 25 15:03:23 2015

UNIT #: 3885TD Z004271

CALB JIG #: 4702NK WA-612

	BACKGROUND (cts/s)	CALBRTR ON (cts/s)	CR DIFF (cts/s)	MULT	BACKGROUND (gAPI)	CALBRTR ON (gAPI)	CALBRTR (gAPI)
GR	61.84	259.64	197.8	1.062	65.66	275.66	210

GR PRIMARY VERIFICATION SUMMARY

TOOL #: 2812LA 11701636

DATE/TIME PERFORMED: Wed Feb 25 15:05:41 2015

UNIT #: 3885TD Z004271

VERI JIG #: 4702NK WA-612

	BACKGROUND (cts/s)	CALBRTR ON (cts/s)	MULT	BACKGROUND (gAPI)	CALBRTR ON (gAPI)	DIFF. (gAPI)
GR	57.36	255.87	1.062	60.89	271.65	210.75
						200.00 220.00

RPM_PNC_3D PRIMARY CALIBRATION SUMMARY

TOOL: 8283PA 10169251

DATE/TIME PERFORMED: Wed Feb 25 14:28:15 2015

UNIT: 3885TD Z004271

CALIBRATOR: 2437XB 112674

SOURCE: 8281AA 10220684

HOURS: 8281AA 302

	ISS	Mtr Vits (V)	SS Gain	LS Gain	XLS Gain	EA Temp (degF)	Sync Delay (usec)	RCAL
Raw Data	802100	124	2324	2307	2316	94	7	0.9833
Interpolated	1300000	146	2307	2304	2316			

	ISS	BKS	BKL	BKX	SGA1	SDA1	SGA2	SDA2
Raw Data	802100	10459	1700	203	26.10	0.15	24.14	0.34
					25.35 26.40	0.00 0.20	23.60 24.80	0.00 0.40

	ISS	ILS	IXS	SS	SS2	LS	CSS	CLS
Raw Data	802100	168001	26460	88401	31452	8229	53476	13181
Fit Quality %		0.986	1.244	0.978	0.935	1.035	0.907	1.033

	ISS	RBOR	RIN ISS/ILS	RIN13 ISS/IXS	RICS ISS/CSS	RATO SS/LS	RTWO SS2/LS	RONE CSS/CLS
Raw Data	802100	1.43	4.77	30.33	15.00	10.75	3.82	4.06
		1.42 1.45	3.55 5.52	22.20 32.70	10.99 16.34	10.06 11.10	3.57 3.95	3.76 4.22
Fit Quality %		0.022	0.024	0.127	0.062	0.078	0.101	0.077
Reduced	1406800	1.43	4.78	30.37	15.00	10.74	3.82	4.06
		1.42 1.45	4.33 5.52	27.60 32.70	13.70 16.34	10.06 11.10	3.57 3.95	3.76 4.22

TPSETEMP PRIMARY CALIBRATION SUMMARY

TOOL #: 8255XA 11774568

DATE/TIME PERFORMED: Wed May 14 12:39:45 2014

UNIT #: 3880TA HL6670

T(0) T(1) T(2) T(3)

INSTRUMENT CONFIGURATION

Source File: /dat1a/CH095164/RPM-tdg

A3 CABLEHEAD

Diameter : 1.37"

PCM POWER SUPPLY

Diameter : 1.70"
Length : 3.86'
Weight : 18 lbs
Series : 8250EA
Mnemonic : PCM

TELEMETRY / CCL

Diameter : 1.70"
Length : 4.46'
Weight : 20 lbs
Series : 8248ED
Mnemonic : PCM
Measure Point: 1.00': CCL MP

SONDEX GAMMA RAY

Diameter : 1.69"
Length : 2.17'
Weight : 10 lbs
Series : 2812LA
Mnemonic : GR
Measure Point: 0.62': GR MP

RPM ELECTRONICS

Diameter : 1.70"
Length : 4.48'
Weight : 16 lbs
Series : 8281EA
Mnemonic : RPM

RPM C DETECTOR SECTION

Diameter : 1.70"
Length : 9.40'

33.24'

CCL MP 25.19'

GR MP 22.64'

XLS DETECTOR 13.58'

LS DETECTOR 13.16'

SS DETECTOR 12.91'

Weight : 41 lbs
Series : 8283PA
Mnemonic : RPM
Measure Point: 5.45': XLS DETECTOR
Measure Point: 5.04': LS DETECTOR
Measure Point: 4.79': SS DETECTOR

RPM SOURCE SECTION

Diameter : 1.70"
Length : 4.70'
Weight : 18 lbs
Series : 8281FA
Mnemonic : RPM

TEMPERATURE / PRESSURE


Diameter : 1.70"
Length : 3.30'
Weight : 13 lbs
Series : 8255XA
Mnemonic : SRPL
Measure Point: 1.52': TEMP MP

TEMP MP
PRES MP 1.65'

BULL PLUG 1 11/16

0.00'

TOTAL LENGTH: 33.24'
TOTAL WEIGHT: 140 lbs
MAX DIAMETER: 0'1.70"

	COMPANY <u>WPX ENERGY</u>		FILE NO: <u>CH095164</u>
	WELL <u>WPX ENERGY GM 422-28</u>		API NO: <u>05045225060000</u>
	FIELD <u>GRAND VALLEY</u>		
	COUNTY <u>GARFIELD</u>	STATE <u>CO</u>	
LOCATION: SHL: 1550' FSL & 2306' FWL BHL: 1897' FNL & 2294' FWL		ELEVATIONS: KB 5500 FT DF GL 5476 FT	28 6S 96W GM 323-28 PAD H&P 318
SEC <u>28</u> TWP <u>6S</u> RGE <u>96W</u>		DATE <u>02-Mar-2015</u>	

