

OPERATOR: **WPX ENERGY**

WELL NAME: GM 422-28
FIELD NAME: GRAND VALLEY
DRILLING RIG: H&P 318
API #: 05-045-22506

LOCATION: SEC. 28 T6S R96W
SURFACE HOLE: 1550' FSL , 2306' FWL
BOTTOM HOLE: 1897' FNL , 2294' FWL
SCALE: 1"=100'



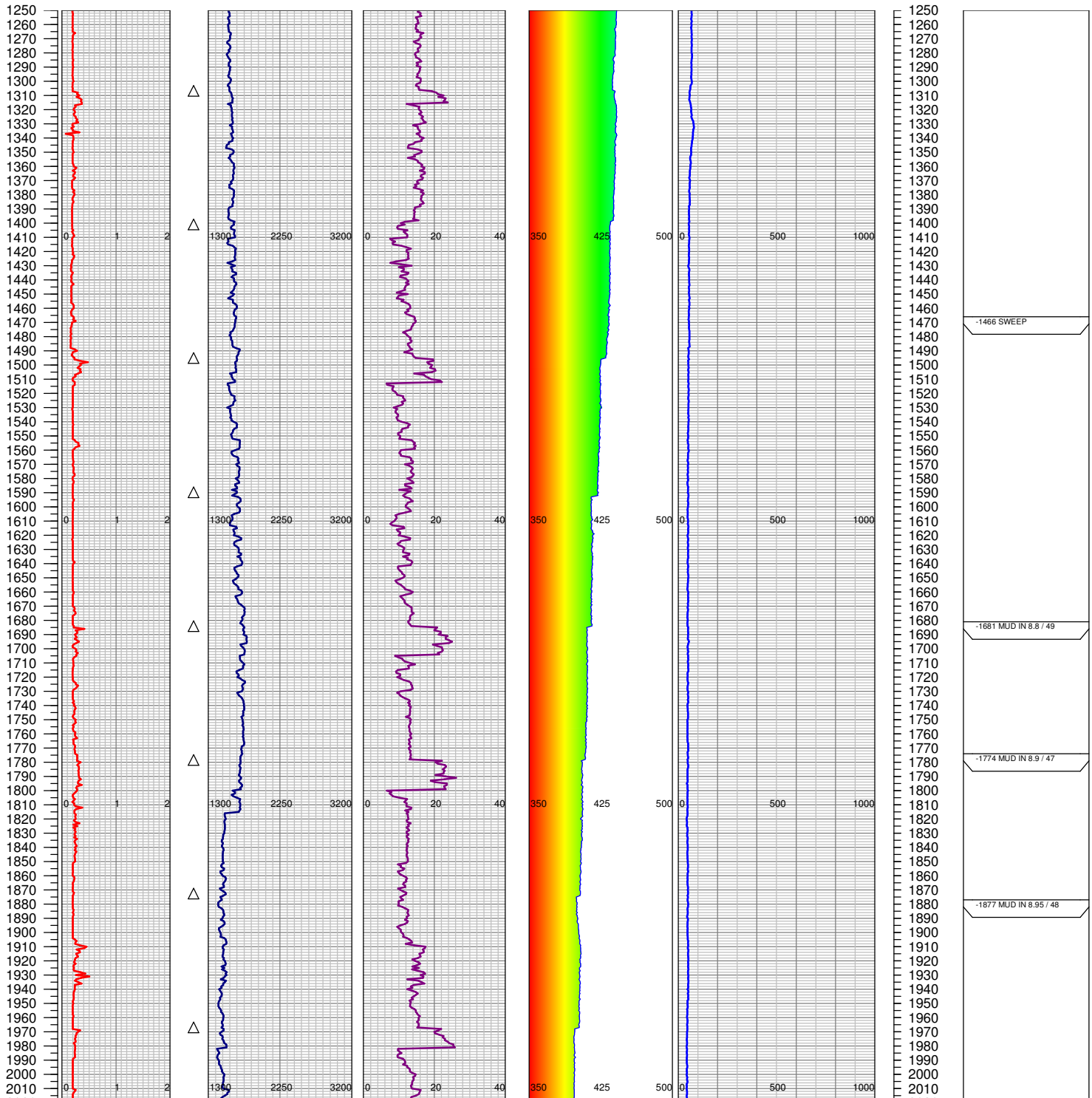
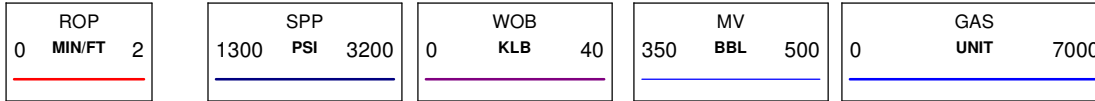
533 Bogart Lane, Unit A
Grand Junction, CO 81505
Office (970) 424-5162

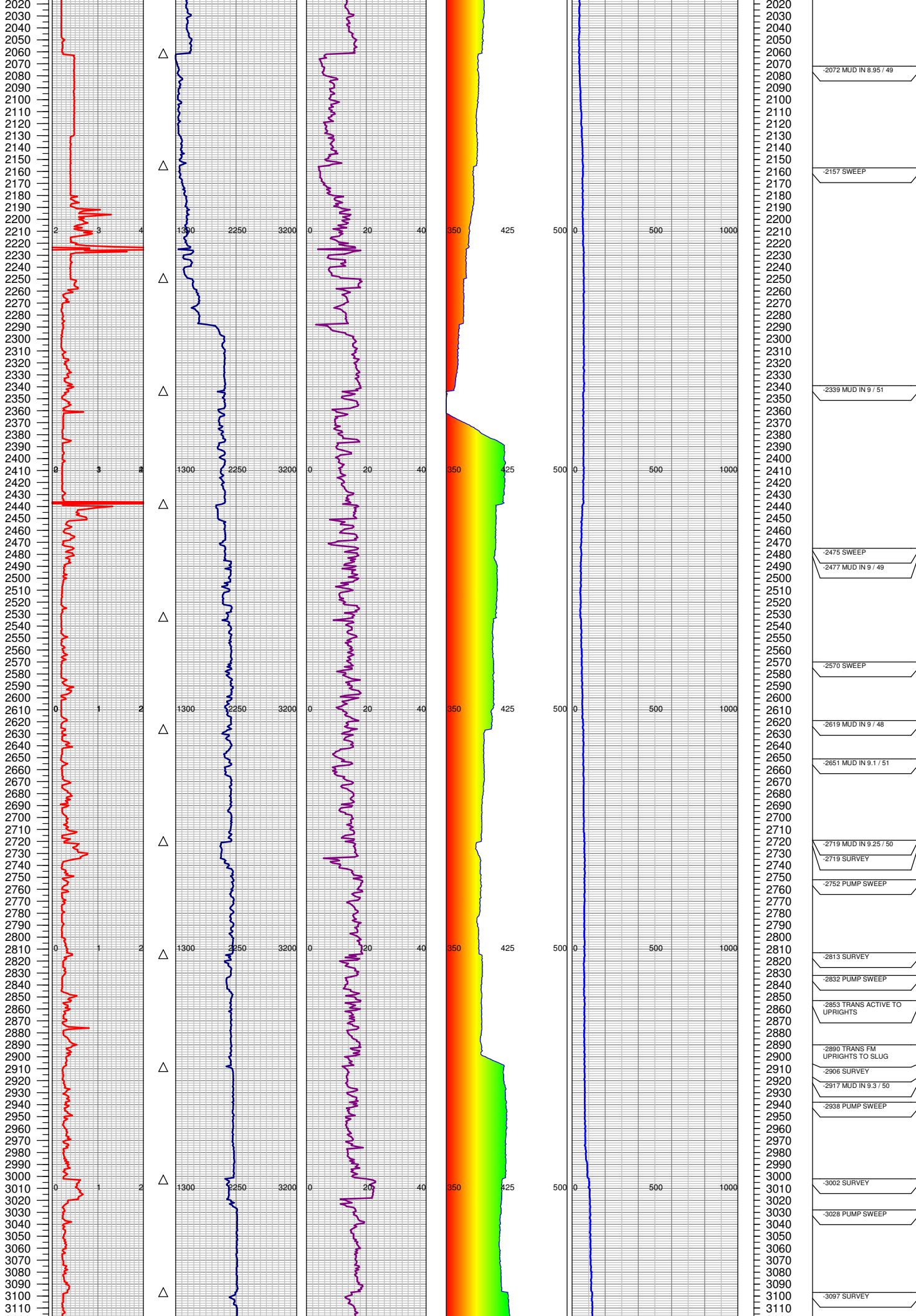
GM 422-28

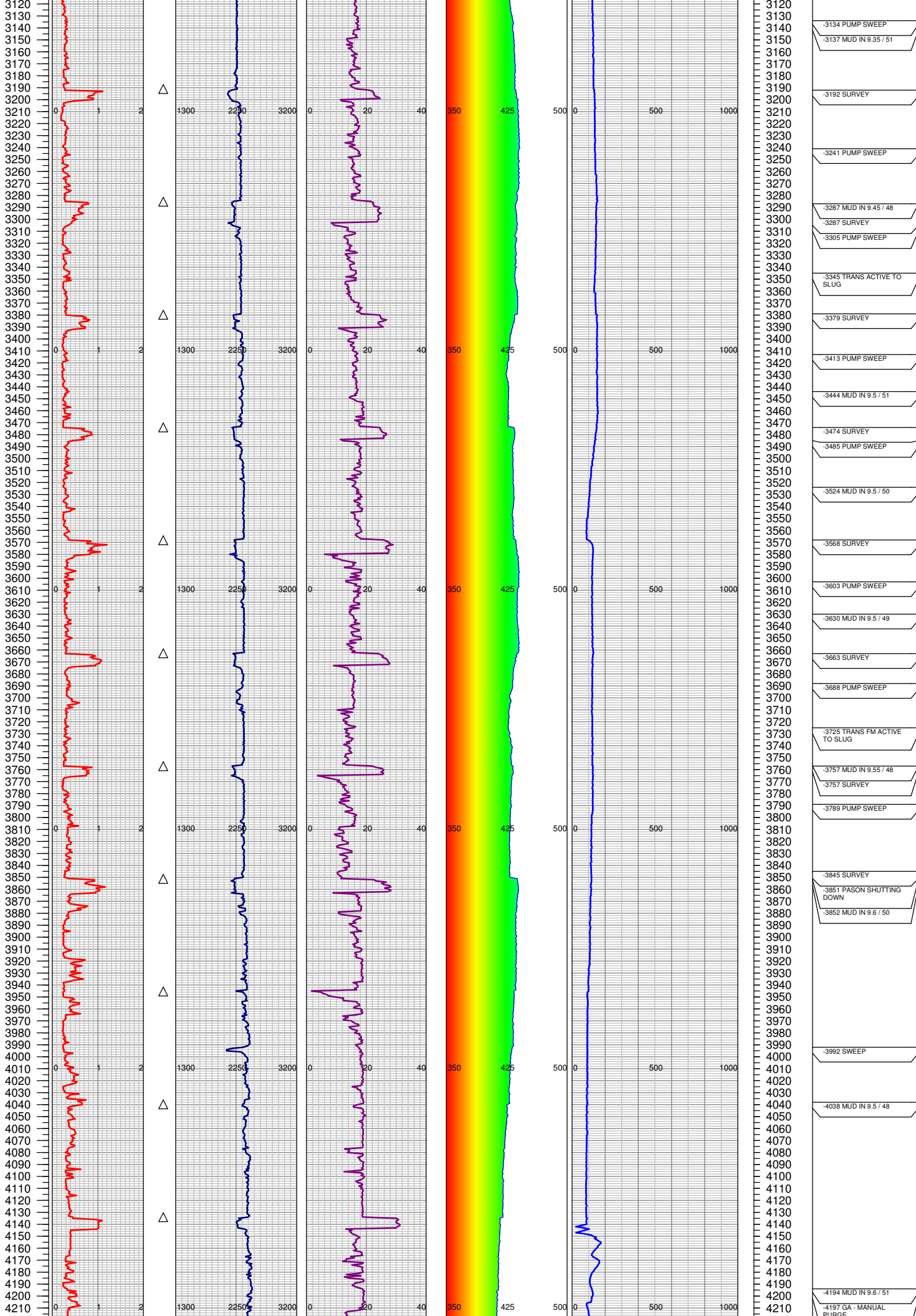
COUNTY: GARFIELD
STATE: COLORADO
DRILLING FLUID: LSND
LOGGER: LUKE DAVENPORT

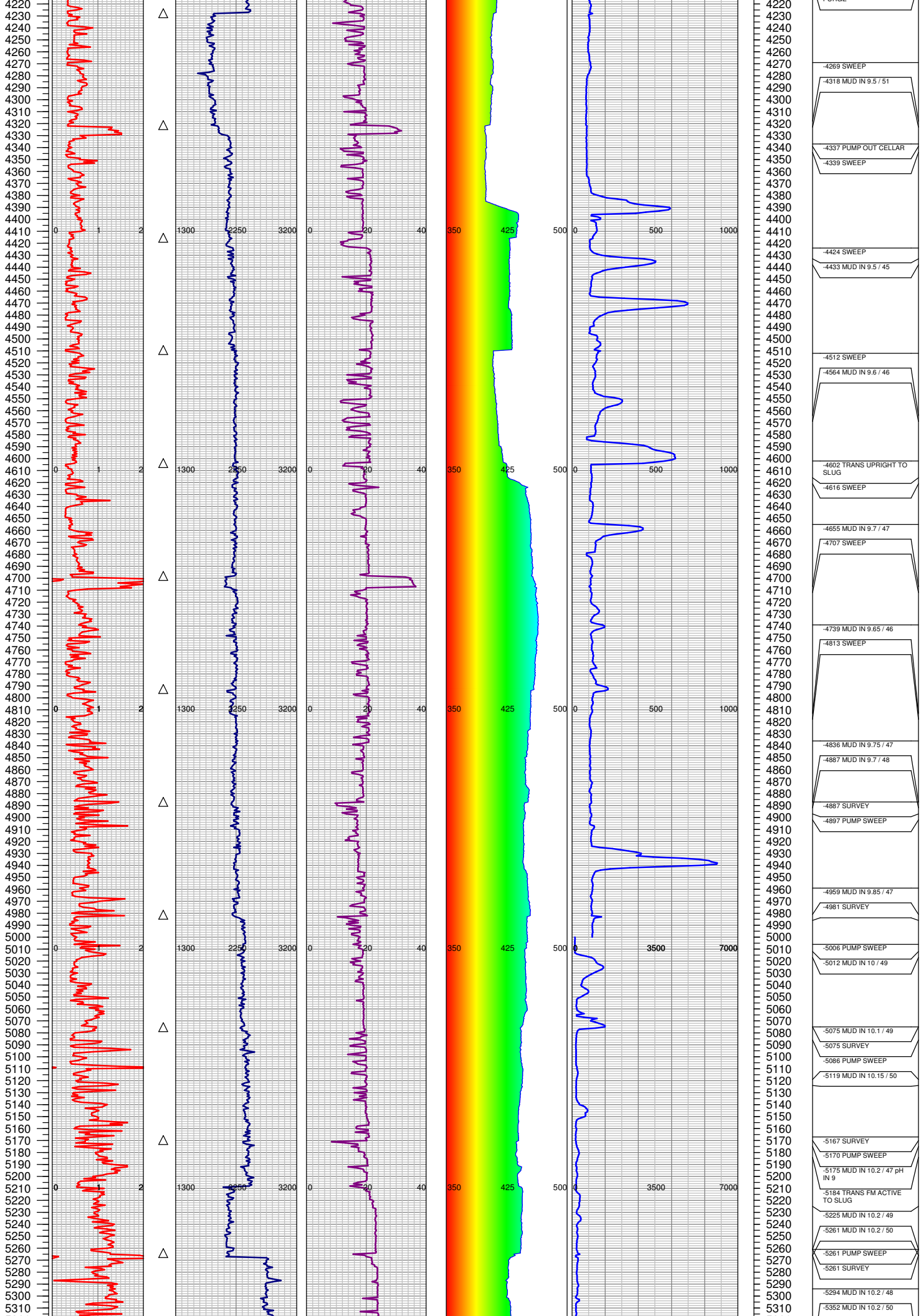
GROUND ELEVATION: 5475'
KELLY BUSHING: 5500'
TVD VS. MD = -406'
DEPTHS LOGGED: 1250'-7245'

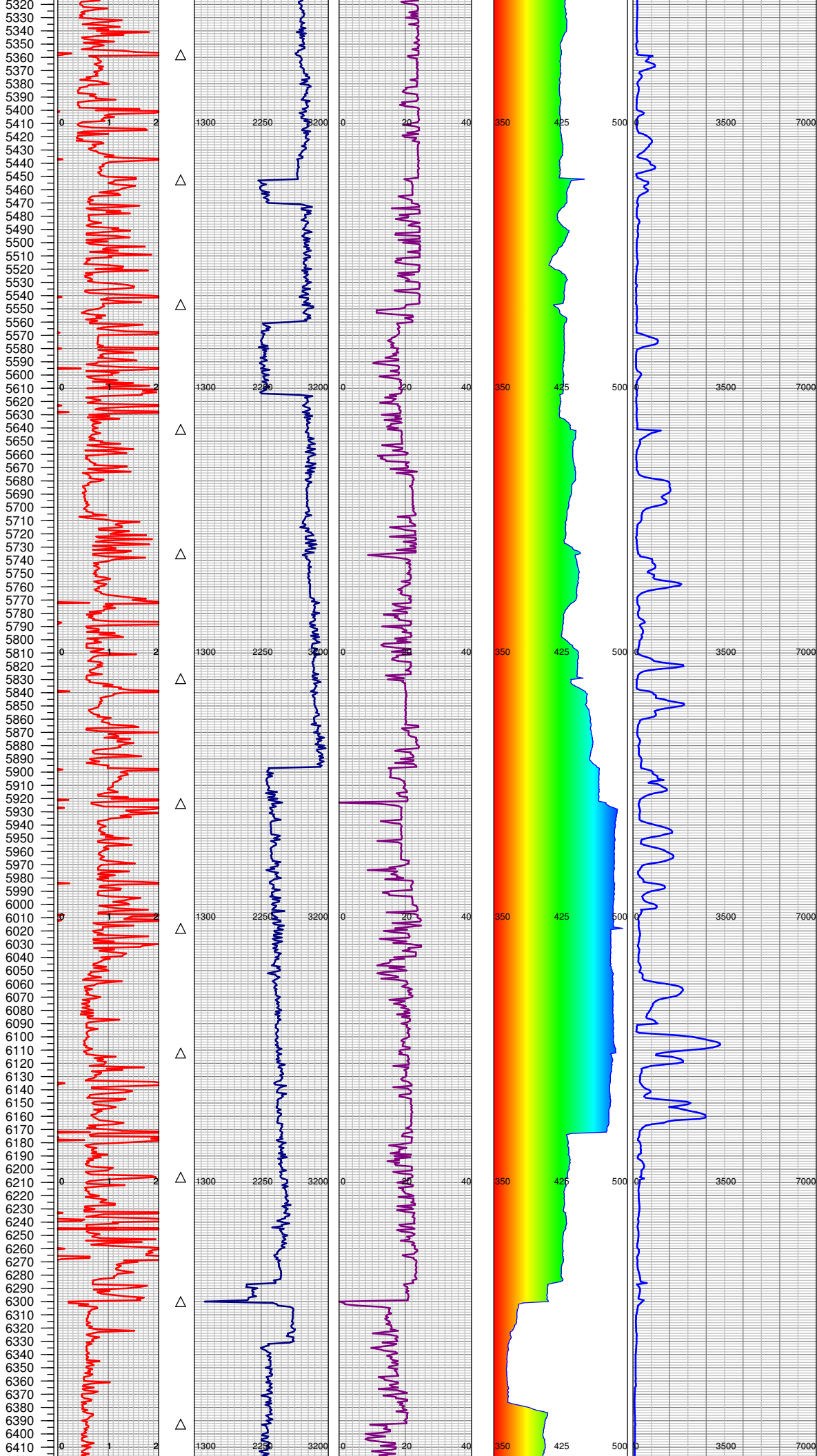
SPUD DATE: 2/10/2015
FGS BEGIN LOGGING: 2/12/2015
TD DATE: 2/16/2015
DATES LOGGED: 2/12/2015-2/16/2015











5320	
5330	
5340	
5350	
5360	-5353 SURVEY
5370	-5363 PUMP SWEEP
5380	
5390	
5400	
5410	
5420	
5430	-5428 MUD IN 10.3 / 49
5440	-5452 RIG SERVICE
5450	-5452 SURVEY
5460	-5470 MUD IN 10.3 / 50
5470	
5480	
5490	
5500	
5510	
5520	
5530	
5540	
5550	-5547 MUD IN 10.3 / 51
5560	-5628 MUD IN 10.35 / 50
5570	
5580	
5590	
5600	
5610	
5620	
5630	
5640	-5639 BOS TO ACTIVE
5650	-5647 PUMP SWEEP
5660	
5670	
5680	
5690	
5700	
5710	-5710 MUD IN 10.3 / 50
5720	-5720 BOS TO ACTIVE
5730	
5740	
5750	
5760	
5770	-5769 SWEEP
5780	-5787 MUD IN 10.35 / 50
5790	
5800	
5810	
5820	
5830	
5840	-5834 BOS TO ACTIVE
5850	-5845 SWEEP
5860	
5870	
5880	
5890	-5879 MUD IN 10.4 / 51
5900	-6050 MUD IN 10.55 / 51
5910	
5920	
5930	
5940	
5950	
5960	
5970	
5980	
5990	
6000	
6010	
6020	
6030	
6040	
6050	
6060	
6070	
6080	
6090	
6100	
6110	-6112 MUD IN 10.6 / 50
6120	-6112 SURVEY
6130	-6117 PUMP SWEEP
6140	
6150	-6171 TRANS FM ACTIVE TO UPRIGHTS 40 BBLs
6160	
6170	
6180	-6177 MUD IN 11.65 / 52
6190	-6177 MUD IN 10.65 / 52
6200	
6210	-6206 SURVEY
6220	-6212 PUMP SWEEP
6230	-6222 MUD IN 10.7 / 53
6240	-6278 MUD IN 10.7 / 55
6250	
6260	
6270	
6280	
6290	-6285 PUMP SWEEP
6300	-6286 TRANS FM UPRIGHTS TO SLUG
6310	
6320	-6299 TRANS FM UPRIGHTS TO SLUG
6330	
6340	-6300 TRANS FM ACTIVE TO SLUG
6350	-6300 TRANS FM UPRIGHTS TO SLUG
6360	
6370	-6300 TRANS 15 BBLs FM UPRIGHTS TO SLUG
6380	
6390	-6300 pump slug
6400	-6300 SURVEY
6410	

