

T4S, R64W, 6th P.M.

ConocoPhillips Company

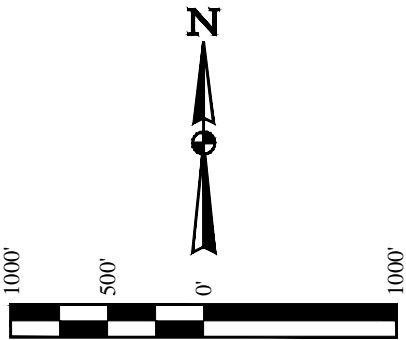
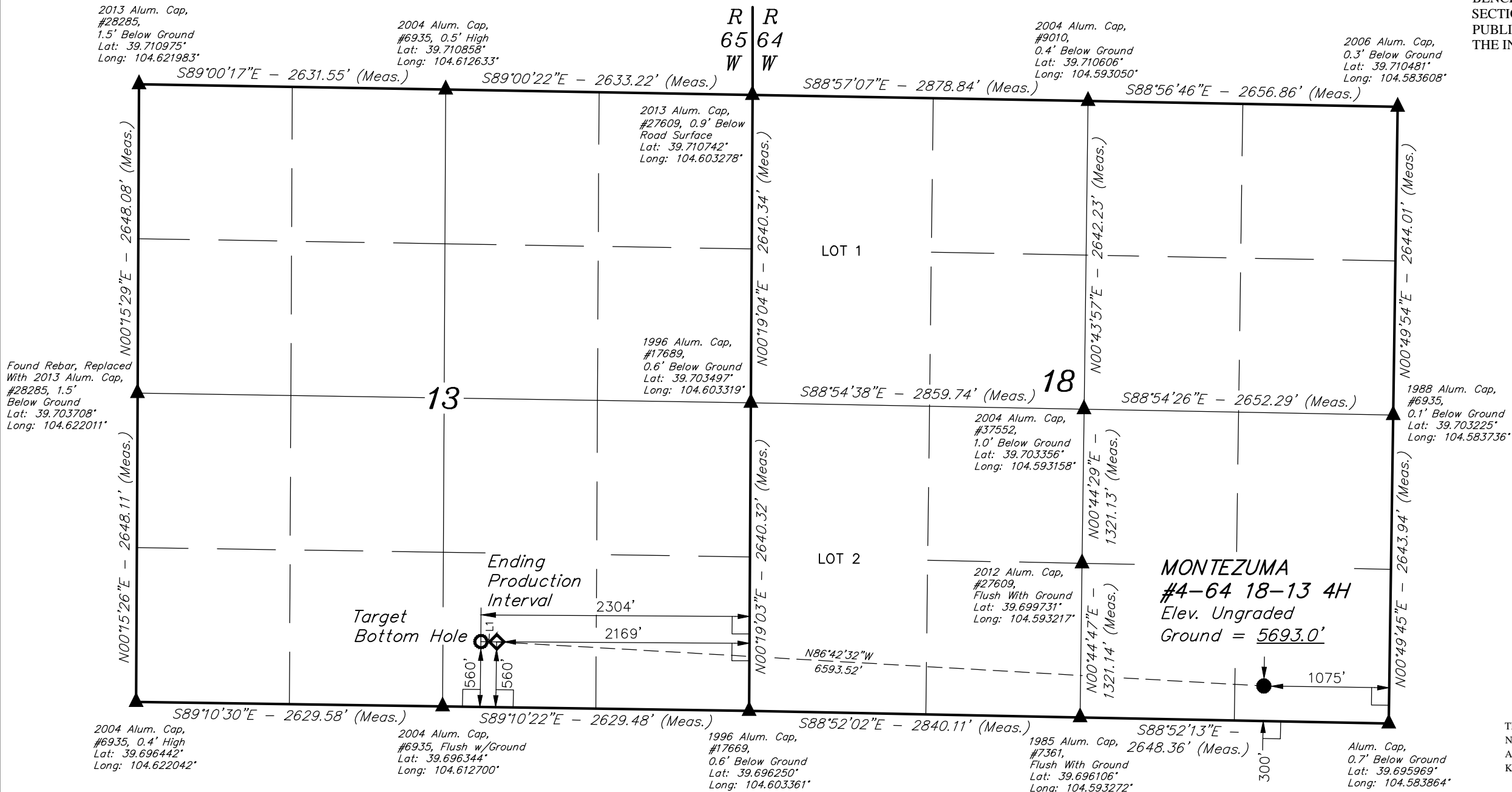
MONTEZUMA #4-64 18-13 4H
SE 1/4 SE 1/4, SECTION 18, T4S, R64W, 6th P.M.
ARAPAHOE COUNTY, COLORADO

BASIS OF BEARINGS

BASIS OF BEARINGS IS A G.P.S. OBSERVATION

BASIS OF ELEVATION

BENCHMARK 374 LOCATED ON THE SECTION LINE BETWEEN
SECTIONS 12 & 13, T5S, R64W, 6th. P.M., TAKEN FROM 1988
PUBLISHED DATUM BY THE UNITED STATES DEPARTMENT OF
THE INTERIOR, GEOLOGICAL SURVEY AS BEING 6054.61 FEET.



| LINE TABLE | | |
|------------|-------------|---------|
| LINE | DIRECTION | LENGTH |
| L1 | N89°10'22"W | 135.01' |

CERTIFICATE

THIS IS TO CERTIFY THAT THE ABOVE PLAT WAS PREPARED FROM FIELD
NOTES OF ACTUAL SURVEYS MADE BY ME OR UNDER MY SUPERVISION
AND THAT THE SAME ARE TRUE AND CORRECT TO THE BEST OF MY
KNOWLEDGE AND BELIEF.

REGISTERED LAND SURVEYOR
REGISTRATION NO. 28285
STATE OF COLORADO

PDOP = 1.3

LEGEND:

- 90° SYMBOL
- PROPOSED WELLHEAD.
- TARGET BOTTOM HOLE.
- PRODUCTION INTERVAL.
- SECTION CORNERS LOCATED.

| NAD 83 (TARGET BOTTOM HOLE) | NAD 83 (ENDING PRODUCTION INTERVAL) | NAD 83 (SURFACE LOCATION) |
|--|--|--|
| LATITUDE = 39°41'52.34" (39.697872) | LATITUDE = 39°41'52.32" (39.697867) | LATITUDE = 39°41'48.65" (39.696847) |
| LONGITUDE = 104°36'41.53" (104.611536) | LONGITUDE = 104°36'39.80" (104.611056) | LONGITUDE = 104°35'15.61" (104.587669) |
| NAD 27 (TARGET BOTTOM HOLE) | NAD 27 (ENDING PRODUCTION INTERVAL) | NAD 27 (SURFACE LOCATION) |
| LATITUDE = 39°41'52.38" (39.697883) | LATITUDE = 39°41'52.37" (39.697881) | LATITUDE = 39°41'48.70" (39.696861) |
| LONGITUDE = 104°36'39.65" (104.611014) | LONGITUDE = 104°36'37.92" (104.610533) | LONGITUDE = 104°35'13.73" (104.587147) |
| STATE PLANE NAD 83 (COLORADO CENT.) | STATE PLANE NAD 83 (COLORADO CENT.) | STATE PLANE NAD 83 (COLORADO CENT.) |
| N: 1680301.09 E: 3250001.78 | N: 16803000.62 E: 3250136.75 | N: 1679994.58 E: 3256721.23 |
| STATE PLANE NAD 27 (COLORADO CENT.) | STATE PLANE NAD 27 (COLORADO CENT.) | STATE PLANE NAD 27 (COLORADO CENT.) |
| N: 680293.69 E: 2250155.40 | N: 680293.22 E: 2250290.36 | N: 679987.30 E: 2256874.80 |



UELS, LLC
Corporate Office * 85 South 200 East
Vernal, UT 84078 * (435) 789-1017

| | |
|-----------------------------------|------------------------|
| SURVEYED BY: DALLAS NIELSEN, B.C. | DATE: 03-06-15 |
| DRAWN BY: J.S. | DATE DRAWN: 07-28-14 |
| SCALE: 1" = 1000' | REVISED: 03-17-15 K.B. |

WELL LOCATION PLAT