



Kerr-McGee Oil & Gas Onshore LP

A subsidiary of Anadarko Petroleum Corporation

1099 18th Street
Denver, CO 80202
720-929-6000

June 4, 2015

Matt Lepore
Director, Colorado Oil and Gas Conservation Commission
Department of Natural Resources
The Chancery Building
1120 Lincoln Street, Suite 801
Denver, CO 80203

Re: **30 Day Certification Letter - 318A.e**
SARCHET 37N-20HZ (Doc. No. 400847699)
Township 2 North, Range 65 West
Section 20: NWNE
Unit Acreage: 480 acres
Unit Spacing: 02N65W Sec 17: S2SE
02N65W Sec 20: E2
02N65W Sec 29: N2NE
Weld County, Colorado

Dear Director Lepore:

Kerr-McGee Oil and Gas Onshore LP ("KMG") hereby certifies that a thirty (30) day notice has been given by certified mail to all mineral owners in the proposed wellbore spacing unit. We have not received any objections to such well location, proposed spacing unit, or additional producing formation. KMG hereby respectfully requests approval of this boundary well.

If you have any questions or issues regarding this permit, please contact our office.

Sincerely,

Kerr-McGee Oil and Gas Onshore LP

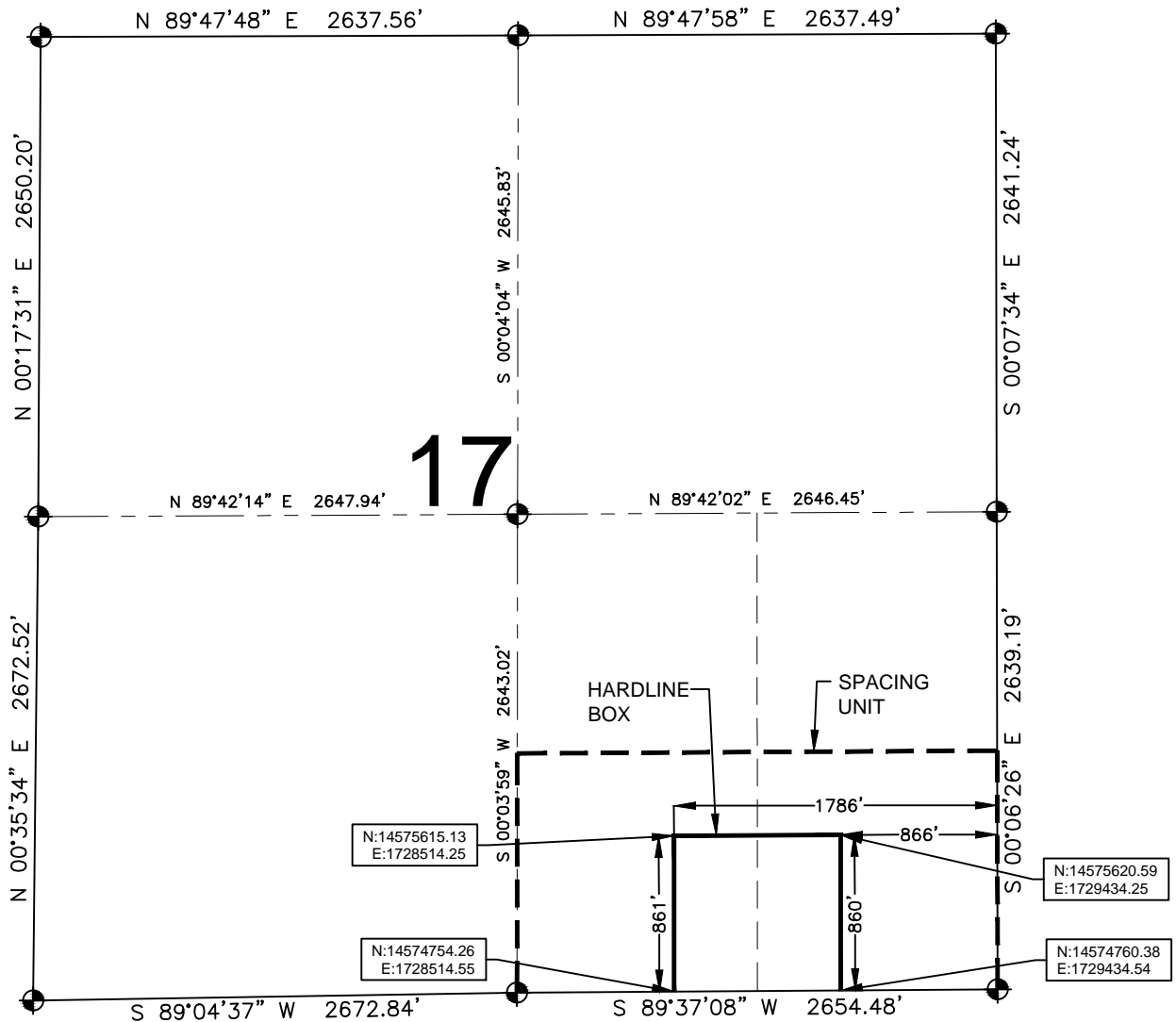
A handwritten signature in blue ink that reads 'RPowers'.

Ronett Powers
Regulatory Analyst II

Enclosure

HARDLINE EXHIBIT: SARCHET 37N-20HZ

SECTION 17, TOWNSHIP 2 NORTH, RANGE 65 WEST, 6TH P.M.



LEGEND

- = EXISTING MONUMENT ● = BOTTOM HOLE
● = PROPOSED HEEL BH = BOTTOM HOLE
○ = CALCULATED POSITION

HEEL LOCATION

WGS84 UTM 13N
LATITUDE= 40.131297°
LONGITUDE= 104.681864°

LATITUDE= 40°07'52.670"
LONGITUDE= 104°40'54.712"

BOTTOM HOLE LOCATION

NAD83 STATE PLANE CO N
LATITUDE= 40.117042°
LONGITUDE= 104.682150°

LATITUDE= 40°07'01.352"
LONGITUDE= 104°40'55.741"

QRT/QRT SECTIONS WITHIN PATH OF THE HARDLINE

SESE, SEC. 17
SWSE, SEC. 17

AVAILABLE FOOTAGE

7069'

NOTES:

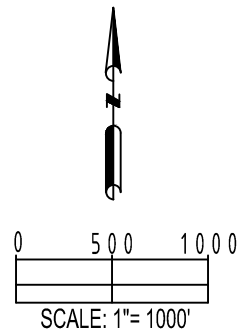
- THIS DOCUMENT IS NOT A LAND SURVEY PLAT OR IMPROVEMENT SURVEY PLAT. THIS DOCUMENT DOES NOT REFLECT A FIELD SURVEY. SECTION BREAKDOWN, MONUMENTATION AND HORIZONTAL POSITIONS SHOWN ARE BASED ON THE HEEL AND BOTTOM HOLE LOCATION PROVIDED BY ANADARKO PETROLEUM CORPORATION.
- COORDINATES ARE PROVIDED IN WGS84, UTM ZONE 13N.

PREPARED BY:



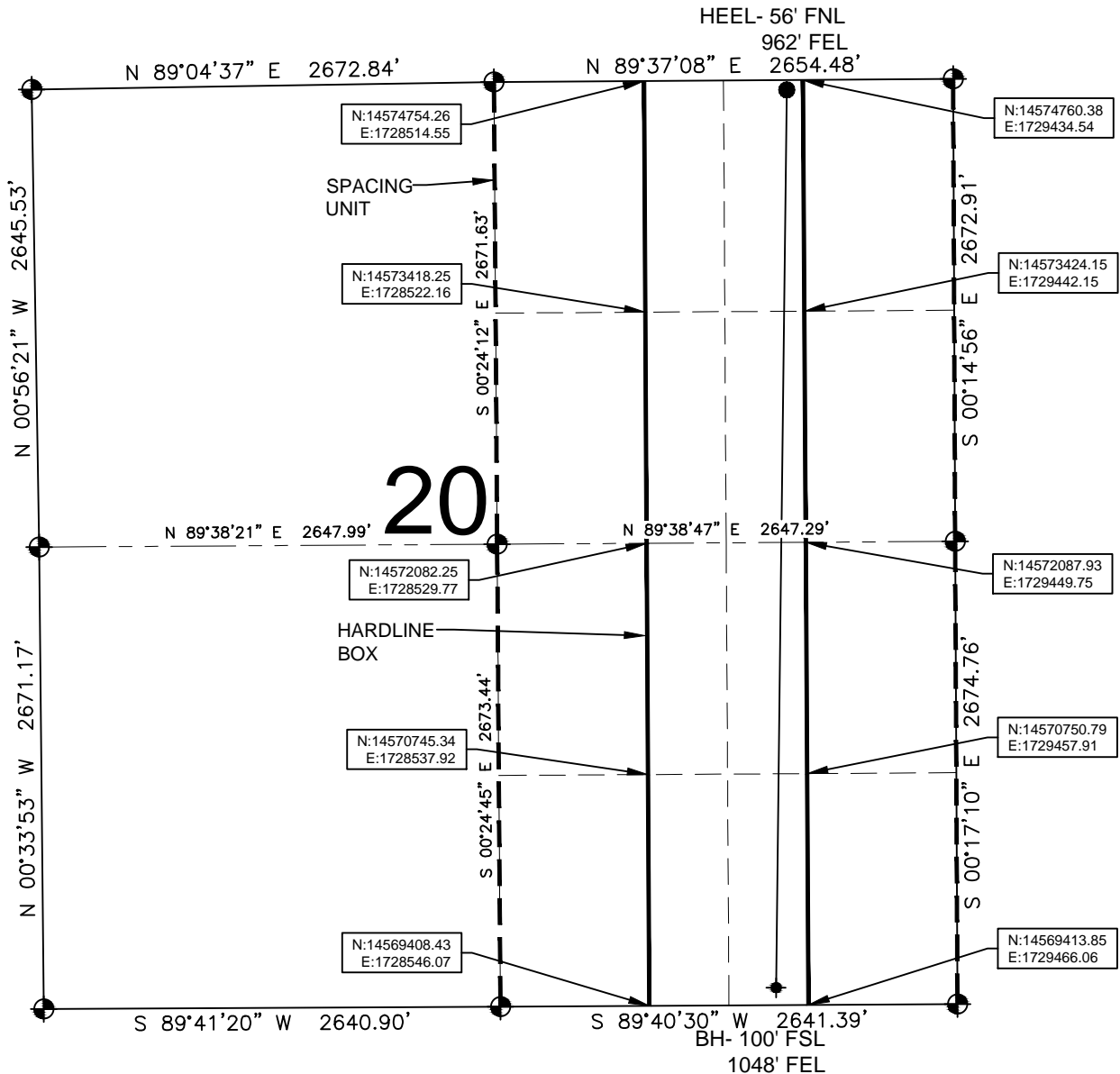
SHEET 1 OF 3

DRAWING DATE:	HEEL LOCATION:
03-06-15	NE 1/4 NE 1/4,
BY: SMF	SEC. 20, T2N, R65W, 6TH P.M.
CHECKED: TJN	WELD COUNTY, COLORADO



HARDLINE EXHIBIT: SARCHET 37N-20HZ

SECTION 20, TOWNSHIP 2 NORTH, RANGE 65 WEST, 6TH P.M.



LEGEND

- = EXISTING MONUMENT ♦ = BOTTOM HOLE
● = PROPOSED HEEL BH = BOTTOM HOLE
○ = CALCULATED POSITION

QRT/QRT SECTIONS WITHIN PATH OF THE HARDLINE

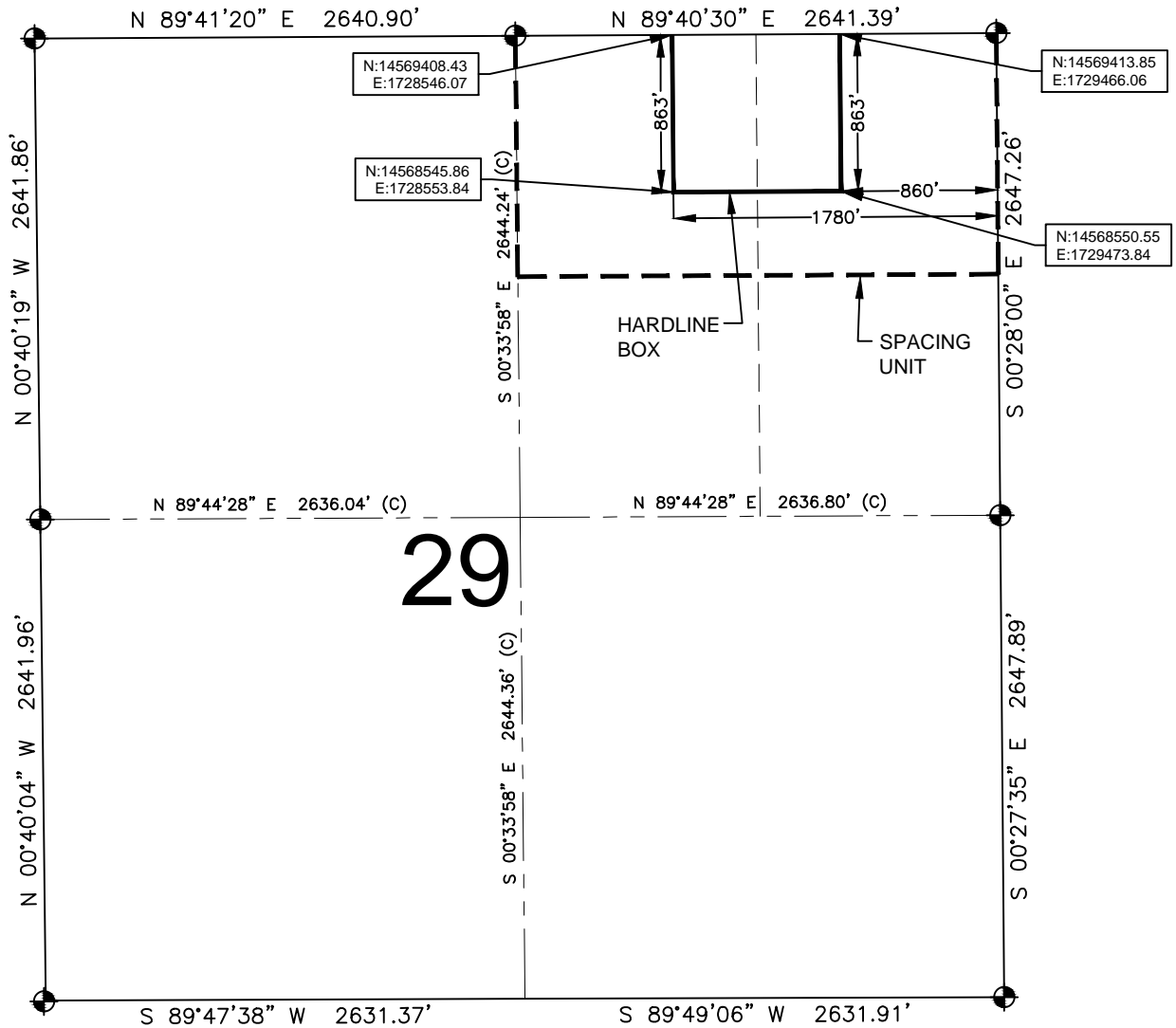
NWNE, SEC. 20 NENE, SEC. 20
SWNE, SEC. 20 SENE, SEC. 20
NWSE, SEC. 20 NESE, SEC. 20
SWSE, SEC. 20 SESE, SEC. 20

NOTES:

- THIS DOCUMENT IS NOT A LAND SURVEY PLAT OR IMPROVEMENT SURVEY PLAT. THIS DOCUMENT DOES NOT REFLECT A FIELD SURVEY. SECTION BREAKDOWN, MONUMENTATION AND HORIZONTAL POSITIONS SHOWN ARE BASED ON THE HEEL AND BOTTOM HOLE LOCATION PROVIDED BY ANADARKO PETROLEUM CORPORATION.
- COORDINATES ARE PROVIDED IN WGS84, UTM ZONE 13N.

HARDLINE EXHIBIT: SARCHET 37N-20HZ

SECTION 29, TOWNSHIP 2 NORTH, RANGE 65 WEST, 6TH P.M.



LEGEND

- = EXISTING MONUMENT ● = BOTTOM HOLE
● = PROPOSED HEEL BH = BOTTOM HOLE
○ = CALCULATED POSITION

QRT/QRT SECTIONS WITHIN PATH OF THE HARDLINE

NENE, SEC. 29
NWNE, SEC. 29

NOTES:

- THIS DOCUMENT IS NOT A LAND SURVEY PLAT OR IMPROVEMENT SURVEY PLAT. THIS DOCUMENT DOES NOT REFLECT A FIELD SURVEY. SECTION BREAKDOWN, MONUMENTATION AND HORIZONTAL POSITIONS SHOWN ARE BASED ON THE HEEL AND BOTTOM HOLE LOCATION PROVIDED BY ANADARKO PETROLEUM CORPORATION.
- COORDINATES ARE PROVIDED IN WGS84, UTM ZONE 13N.