

T10N, R57W, 6th P.M.

-
- Section 18, T10N, R57W, 6th P.M.**
- LOT 1**
 2006 Alum. Cap,
 0.6' Below Ground
 Lat: 40.860678°
 Long: 103.804117°
- LOT 2**
- LOT 3**
 2006 Alum. Cap,
 0.6' Below Ground
 Lat: 40.853414°
 Long: 103.804036°
- LOT 4**
 1917 Brass Cap,
 Fence
 Lat: 40.846147°
 Long: 103.803839°
- NOTE:**
 THE PROPOSED TARGET BOTTOM HOLE FOR
 THIS WELL IS LOCATED IN THE SE 1/4 SE
 1/4 OF SECTION 18, T10N, R57W, 6th P.M.
 AT 100' FSL 1298' FEL. IT BEARS
 S03°34'46"W 7914.54' FROM THE PROPOSED
 WELLHEAD.
- HORSETAIL #07H-1845**
 Elev. Ungraded Ground = 4902.7'
- Target Bottom Hole**
- Boundaries and Measurements:**
 Top: S89°29'32"W - 2517.94' (Meas.)
 Top: S89°29'19"W - 2651.74' (Meas.)
 Right: N00°55'43"W - 2661.06' (Meas.)
 Right: N01°04'20"W - 2659.64' (Meas.)
 Bottom: S89°44'57"W - 2530.51' (Meas.)
 Bottom: S89°45'37"W - 2652.58' (Meas.)
 Left: N00°31'10"W - 2647.68' (Meas.)
 Left: N01°11'48"W - 2649.08' (Meas.)
- Well Data:**
 2006 Alum. Cap,
 0.9' Below Ground
 Lat: 40.860736°
 Long: 103.795017°
 2006 Alum. Cap,
 0.1' Below Ground
 Lat: 40.853497°
 Long: 103.785283°
 1917 Brass Cap,
 0.2' High
 Lat: 40.846172°
 Long: 103.794694°
 1917 Brass Cap,
 0.4' High
 Lat: 40.846200°
 Long: 103.785111°
- Other Measurements:**
 2633'
 688'
 S03°34'46"W 7914.54'

A horizontal graphic scale bar with alternating black and white segments. Above the bar, the markings '1000'', '500'', '0'', '500'', and '1000'' are printed from left to right, indicating distances in feet.

LATITUDE = 40°51'12.86" (40.853572)
LONGITUDE = 103°47'14.17" (103.787269)

SPOT ELEVATION LOCATED AT THE NORTHEAST CORNER OF SECTION 15, T9N, R57W, 6th P.M. TAKEN FROM THE GATEHOOK SPRING, QUADRANGLE, COLORADO, WELD COUNTY, 7.5 MINUTE QUAD (TOPOGRAPHIC MAP) PUBLISHED BY THE UNITED STATES DEPARTMENT OF THE INTERIOR, GEOLOGICAL SURVEY. SAID ELEVATION IS MARKED AS BEING 4679 FEET.



UELS, LLC
Corporate Office * 85 South 200 East
Vernal, UT 84078 * (435) 789-1017

HORSETAIL #07H-1845 (SURFACE LOCATION)
SE 1/4 NE 1/4, SECTION 7, T10N, R57W, 6th P.M.
WELD COUNTY, COLORADO

SURVEYED BY: DALLAS NIELSEN, J.S.	DATE: 12-11-14
DRAWN BY: K.B.	DATE DRAWN: 10-30-14
SCALE: 1" = 1000'	REVISED: 02-25-15

WELL LOCATION PLAT

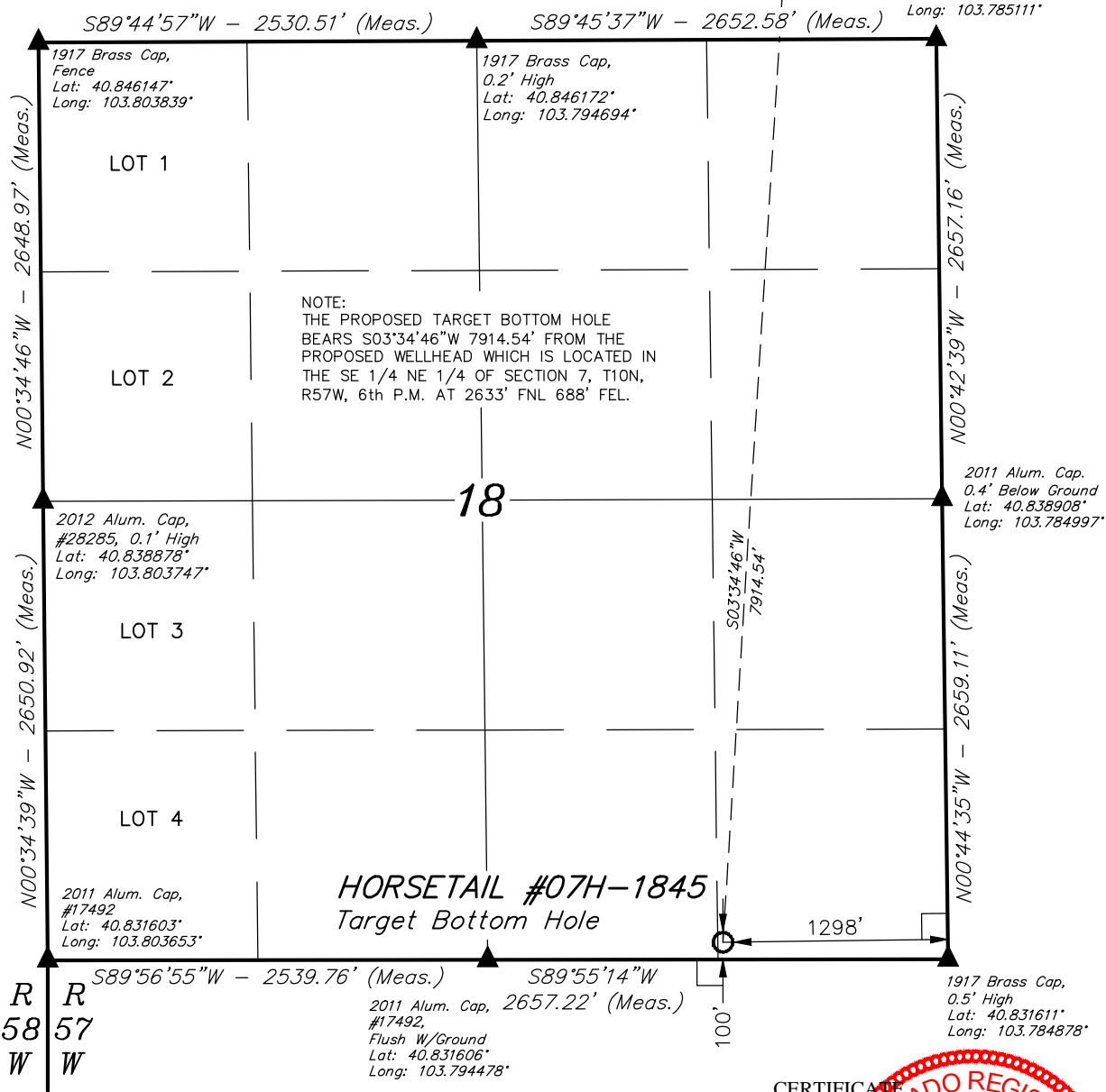
LEGEND:

- 90° SYMBOL
- PROPOSED WELLHEAD.
- TARGET BOTTOM HOLE.
- SECTION CORNERS LOCATED.

T10N, R57W, 6th P.M.

Surface Location

1917 Brass Cap,
0.4' High,
Lat: 40.846200°
Long: 103.785111°



CERTIFICATE

THIS IS TO CERTIFY THAT THE ABOVE PLAT WAS PREPARED FROM FIELD NOTES OF ACTUAL SURVEYS MADE BY ME OR UNDER MY SUPERVISION AND THAT THE SAME ARE TRUE AND CORRECT TO THE BEST OF MY KNOWLEDGE AND BELIEF.

REGISTERED LAND SURVEYOR
REGISTRATION NO. 28285
STATE OF COLORADO

NAD 83 (TARGET BOTTOM HOLE)
LATITUDE = 40°49'54.78" (40.831883)
LONGITUDE = 103°47'22.46" (103.789572)
NAD 27 (TARGET BOTTOM HOLE)
LATITUDE = 40°49'54.83" (40.831897)
LONGITUDE = 103°47'20.66" (103.789072)



BASIS OF BEARINGS
BASIS OF BEARINGS IS A G.P.S. OBSERVATION
BASIS OF ELEVATION

SPOT ELEVATION LOCATED AT THE NORTHEAST CORNER OF SECTION 15, T9N, R57W, 6th P.M. TAKEN FROM THE GATEHOOK SPRING, QUADRANGLE, COLORADO, WELD COUNTY, 7.5 MINUTE QUAD (TOPOGRAPHIC MAP) PUBLISHED BY THE UNITED STATES DEPARTMENT OF THE INTERIOR, GEOLOGICAL SURVEY. SAID ELEVATION IS MARKED AS BEING 4679 FEET.

WHITING OIL & GAS CORP.

HORSETAIL #07H-1845 (TARGET BOTTOM HOLE)
SE 1/4 SE 1/4, SECTION 18, T10N, R57W, 6th P.M.
WELD COUNTY, COLORADO

SURVEYED BY: DALLAS NIELSEN, J.S.	DATE: 12-11-14
DRAWN BY: K.B.	DATE DRAWN: 10-30-14
SCALE: 1" = 1000'	REVISED: 02-25-15

WELL LOCATION PLAT



UELS, LLC
Corporate Office * 85 South 200 East
Vernal, UT 84078 * (435) 789-1017

