



Project: Weld County, CO
Site: Sec 7-T10N-R57W
Well: Horsetail #07H-1815
Wellbore: Hz
Design: Design #1

PROJECT DETAILS: Weld County, CO
Geodetic System: US State Plane 1983
Datum: North American Datum 1983
Ellipsoid: GRS 1980
Zone: Colorado Northern Zone
System Datum: Mean Sea Level



Azimuths to True North
Magnetic North: 7.88°

Magnetic Field
Strength: 53088.1nT
Dip Angle: 67.44°
Date: 1/6/2015
Model: IGRF2010

WELL DETAILS: Horsetail #07H-1815

+N/-S		+E/-W	Northing	Ground Level: 4908.90	Longitude	Slot
0.00		0.00	1558372.09	Easting 3473803.78 Latitude 40° 51' 12.770 N	103° 47' 14.020 W	

SECTION DETAILS

Sec	MD	Inc	Azi	TVD	+N/-S	+E/-W	Dleg	TFace	VSec	Target
1	0.00	0.00	0.00	0.00	0.00	0.00	0.00	0.00	0.00	
2	300.00	0.00	0.00	300.00	0.00	0.00	0.00	0.00	0.00	
3	600.00	6.00	24.00	599.45	14.34	6.38	2.00	24.00	-14.20	
4	4150.00	6.00	24.00	4130.00	353.33	157.31	0.00	0.00	-349.99	
6	4450.00	0.00	0.00	4429.46	367.67	163.70	2.00	180.00	-364.19	
6	5249.67	0.00	0.00	5229.13	367.67	163.70	0.00	0.00	-364.19	
7	6067.85	90.00	180.00	5750.00	-153.20	163.70	11.00	180.00	156.56	PBHL 1815A
8	13806.70	90.00	180.00	5750.00	-7892.06	163.74	0.00	0.00	7893.75	PBHL 1815A

FORMATION TOP DETAILS

TVDPath	MDPath	Formation
1550.00	1555.78	Upper Pierre
3500.00	3516.53	Hygiene
3650.00	3667.35	Lower Pierre
5515.00	5552.28	P200 Marker
5530.00	5570.44	P300 Marker
5550.00	5595.37	P350 Marker
5702.00	5842.49	Sharon Springs
5707.00	5854.73	Niobrara
5727.00	5912.50	Top A Chalk

ANNOTATIONS

TVD	MD	Inc	Azi	+N/-S	+E/-W	VSec	Departure	Annotation
300.00	300.00	0.00	0.00	0.00	0.00	0.00	0.00	Build 2°/100'
599.45	600.00	6.00	24.00	14.34	6.38	-14.20	15.69	Hold 6° Inc
4130.00	4150.00	6.00	24.00	353.33	157.31	-349.99	386.77	Drop 2°/100'
4429.46	4450.00	0.00	0.00	367.67	163.70	-364.19	402.46	Hold vertical
5229.13	5249.67	0.00	0.00	367.67	163.70	-364.19	402.46	KOP, Build 11°/100'
5750.00	6067.85	90.00	180.00	-153.20	163.70	156.56	923.33	LP @ 90° Inc, Hold
5750.00	13806.70	90.00	180.00	-7892.06	163.74	7893.75	8662.19	TD at 13806.70' MD

DESIGN TARGET DETAILS

Name	TVD	+N/-S	+E/-W	Northing	Easting	Latitude	Longitude
PBHL 1815A	5750.00	-7892.06	163.74	1550484.67	3474119.91	40° 49' 54.790 N 103° 47' 11.890 W	

SHL:

2638' FNL, 538' FEL
Sec7-T10N-R57W

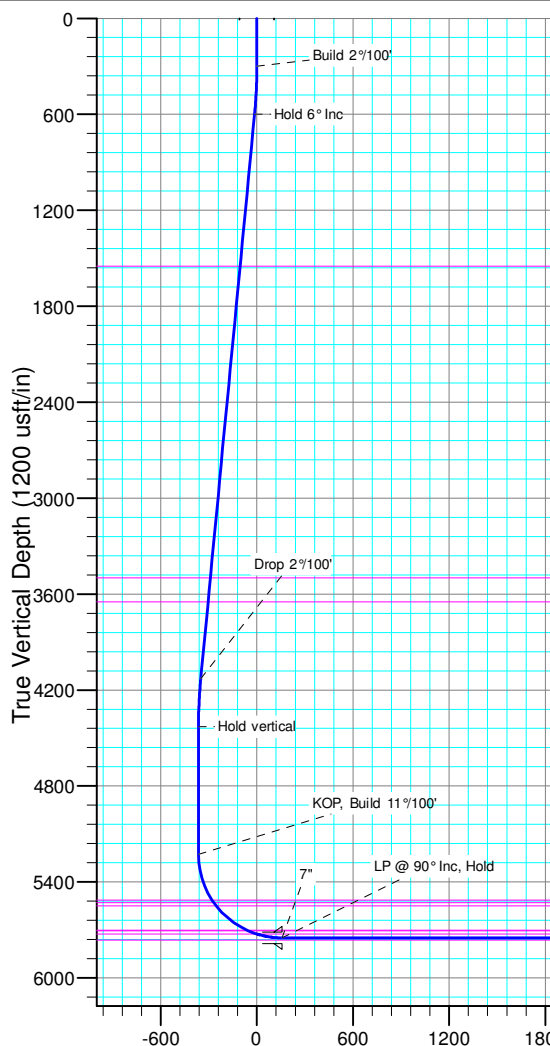
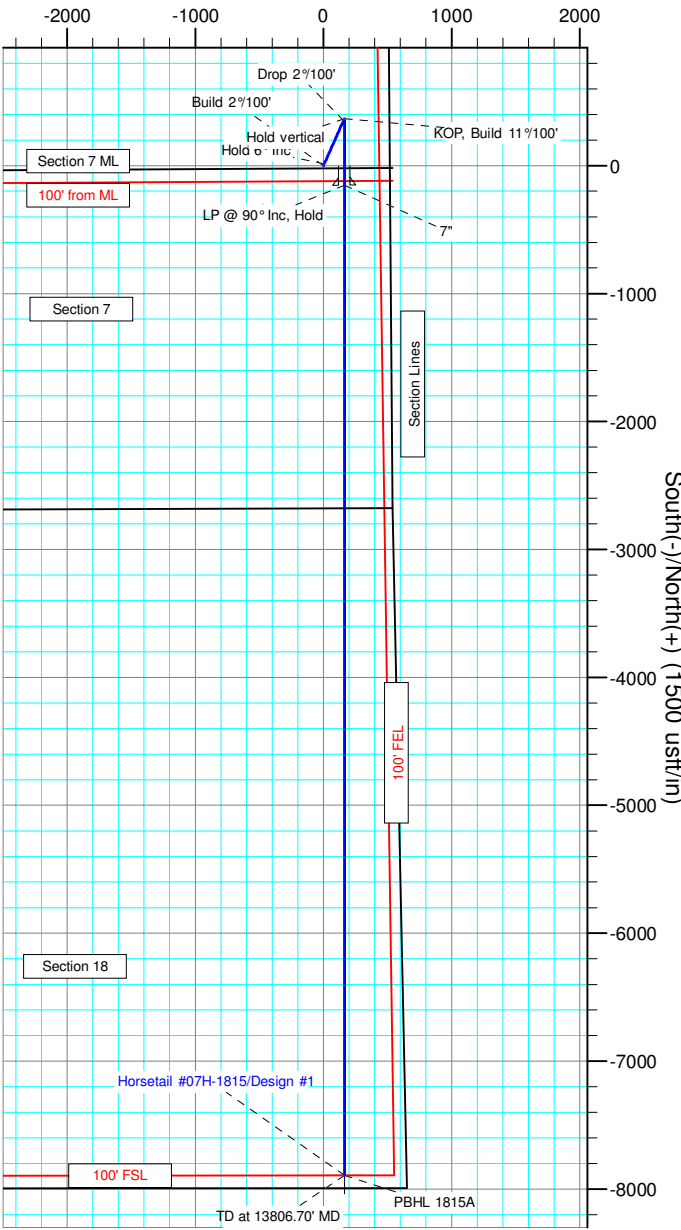
BHL:

100' FSL, 485' FEL
Sec18-T10N-R57W

7":

2530' FSL, 375' FEL
Sec7-T10N-R57W

West(-)/East(+) (1500 usft/in)



Vertical Section at 178.81° (1200 usft/in)