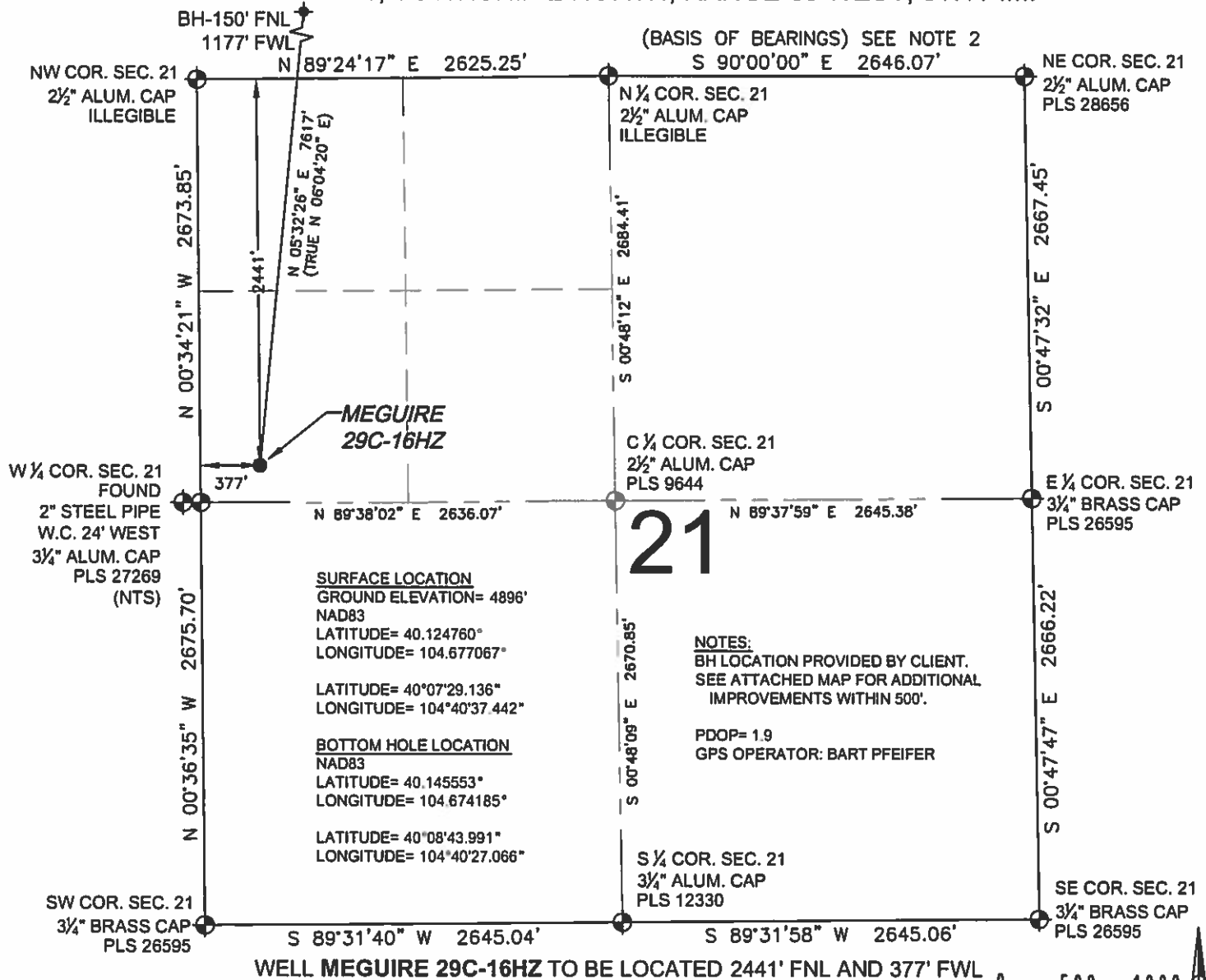


# WELL LOCATION CERTIFICATE: MEGUIRE 29C-16HZ

SECTION 21, TOWNSHIP 2 NORTH, RANGE 65 WEST, 6TH P.M.



## LEGEND

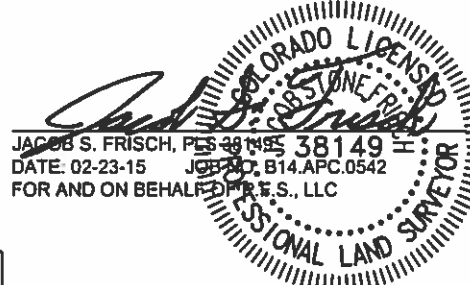
- = EXISTING MONUMENT  
● = PROPOSED WELL  
BH = BOTTOM HOLE  
+ = BOTTOM HOLE  
◆ = EXISTING WELL  
○ = CALCULATED POSITION

## NOTES:

1. THIS FIELD SURVEY CONFORMS TO THE MINIMUM STANDARDS SET BY THE C.O.G.C.C., RULE NO. 215
2. BEARINGS AND DISTANCE SHOWN HEREON ARE GRID AND BASED ON THE COLORADO STATE PLANE COORDINATE SYSTEM, NAD 83/2011 BETWEEN MONUMENTS AS LABELED HEREON AND ELEVATIONS SHOWN ARE NAVD 88, AS DERIVED BY GPS OBSERVATIONS.
3. GRID DISTANCES ARE SHOWN, AS MEASURED IN THE FIELD, WITH TIES TO WELLS MEASURED PERPENDICULAR TO SECTION LINES. TO GET GROUND DISTANCES MULTIPLY THE SHOWN DISTANCE BY 1.000272228.
4. ALL LINES SHOWN THAT ARE WITHOUT DIMENSION SHOULD BE CONSIDERED SCALED AND ONLY REPRESENT A GRAPHICAL DEPICTION OF THE APPROXIMATE LOCATION OF SAID LINE.

SHEET 1 OF 2

I, JACOB S. FRISCH, A LICENSED PROFESSIONAL LAND SURVEYOR IN THE STATE OF COLORADO DO HEREBY CERTIFY TO KERR-MCGEE OIL & GAS ONSHORE LP, THAT THE SURVEY AND WELL LOCATION CERTIFICATE SHOWN HEREON WERE DONE BY ME OR UNDER MY DIRECT SUPERVISION AND THAT THE DRAWING SHOWN HEREON ACCURATELY DEPICTS THE PROPOSED LOCATION OF THE WELL. THIS CERTIFICATE DOES NOT REPRESENT A LAND SURVEY PLAT OR IMPROVEMENT SURVEY PLAT AS DEFINED BY C.R.S. 38-51-102 AND CANNOT BE RELIED UPON TO DETERMINE OWNERSHIP.

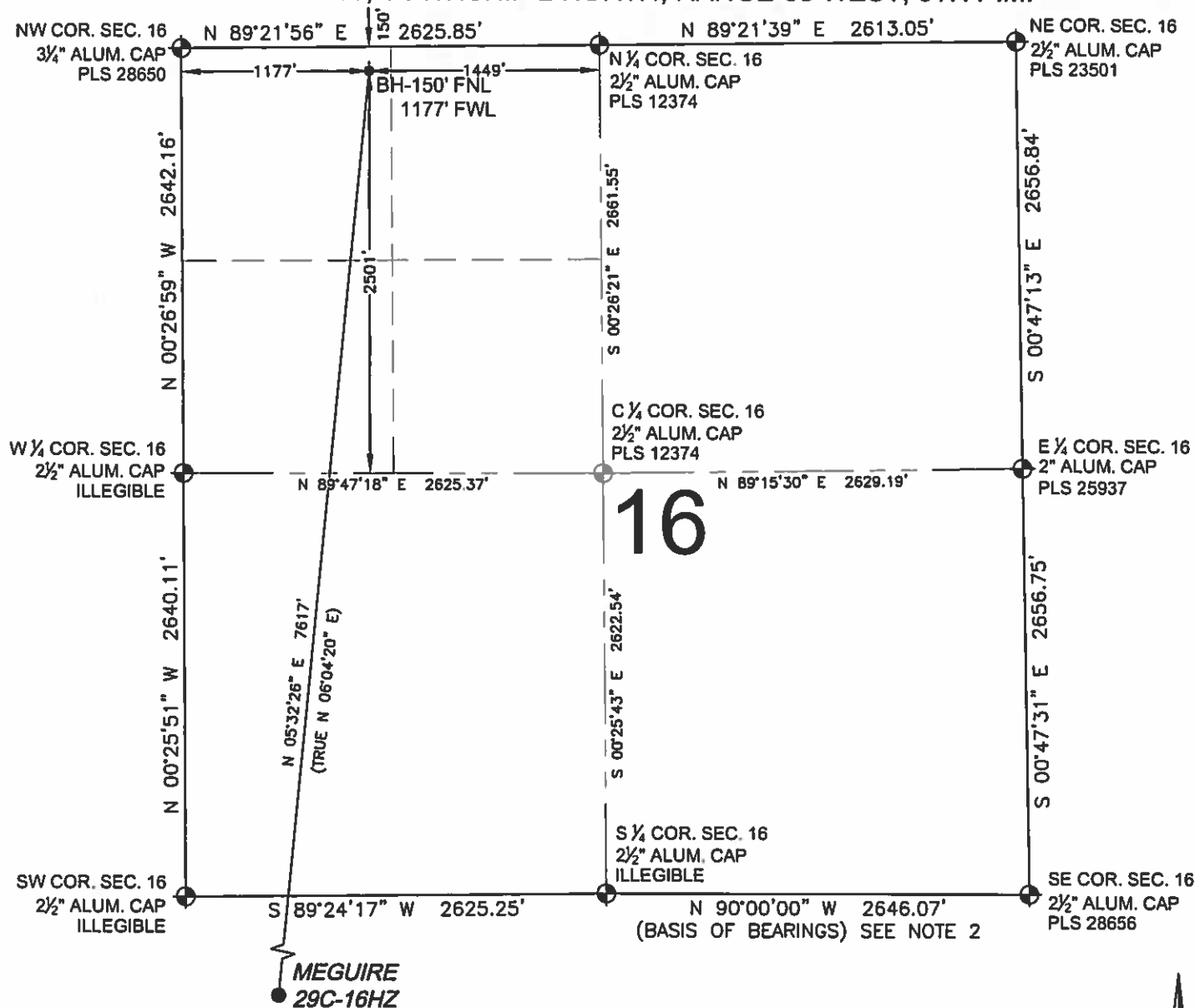


PREPARED BY: <b>PFS</b> Professional Field Services, LLC 7536 Hilltop Circle Denver, CO 80221	FIELD DATE: 10-17-14 DRAWING DATE: 02-23-15 BY: SMF CHECKED: DRF	SURFACE LOCATION: SW 1/4 NW 1/4, SEC. 21, T2N, R65W, 6TH P.M. WELD COUNTY, COLORADO
---	---	--

NOTICE: ACCORDING TO COLORADO LAW YOU MUST COMMENCE ANY LEGAL ACTION BASED UPON ANY DEFECT IN THIS SURVEY WITHIN THREE YEARS AFTER YOU FIRST DISCOVER SUCH DEFECT. IN NO EVENT MAY ANY ACTION BASED UPON ANY DEFECT IN THIS SURVEY BE COMMENCED MORE THAN TEN YEARS FROM THIS SAID DATE OF THIS CERTIFICATION SHOWN HEREON.

# WELL LOCATION CERTIFICATE: MEGUIRE 29C-16HZ

SECTION 16, TOWNSHIP 2 NORTH, RANGE 65 WEST, 6TH P.M.



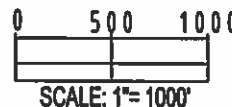
## LEGEND

- ⊕ = EXISTING MONUMENT
- = PROPOSED WELL
- BH = BOTTOM HOLE
- ⊕ = BOTTOM HOLE
- ◆ = EXISTING WELL
- = CALCULATED POSITION

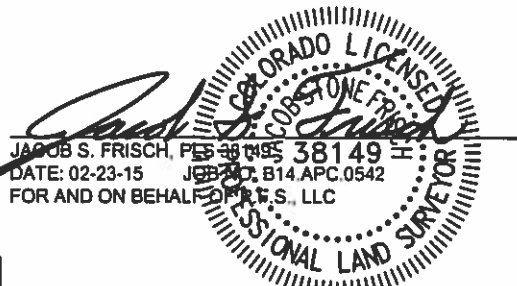
## NOTES:

- THIS FIELD SURVEY CONFORMS TO THE MINIMUM STANDARDS SET BY THE C.O.G.C.C., RULE NO. 215
- BEARINGS AND DISTANCE SHOWN HEREON ARE GRID AND BASED ON THE COLORADO STATE PLANE COORDINATE SYSTEM, NAD 83/2011 BETWEEN MONUMENTS AS LABELED HEREON AND ELEVATIONS SHOWN ARE NAVD 88, AS DERIVED BY GPS OBSERVATIONS.
- GRID DISTANCES ARE SHOWN, AS MEASURED IN THE FIELD, WITH TIES TO WELLS MEASURED PERPENDICULAR TO SECTION LINES. TO GET GROUND DISTANCES MULTIPLY THE SHOWN DISTANCE BY 1.000272228.
- ALL LINES SHOWN THAT ARE WITHOUT DIMENSION SHOULD BE CONSIDERED SCALED AND ONLY REPRESENT A GRAPHICAL DEPICTION OF THE APPROXIMATE LOCATION OF SAID LINE.

SHEET 2 OF 2



<b>PREPARED BY:</b>  <b>PFS</b> Petroleum Field Services, LLC 7535 Hilltop Circle Denver, CO 80221	<b>FIELD DATE:</b> 10-17-14	<b>SURFACE LOCATION:</b> SW 1/4 NW 1/4, SEC. 21, T2N, R65W, 6TH P.M. WELD COUNTY, COLORADO
	<b>DRAWING DATE:</b> 02-23-15	<b>CHECKED:</b> SMF



NOTICE: ACCORDING TO COLORADO LAW YOU MUST COMMENCE ANY LEGAL ACTION BASED UPON ANY DEFECT IN THIS SURVEY WITHIN THREE YEARS AFTER YOU FIRST DISCOVER SUCH DEFECT. IN NO EVENT MAY ANY ACTION BASED UPON ANY DEFECT IN THIS SURVEY BE COMMENCED MORE THAN TEN YEARS FROM THIS SAID DATE OF THIS CERTIFICATION SHOWN HEREON.