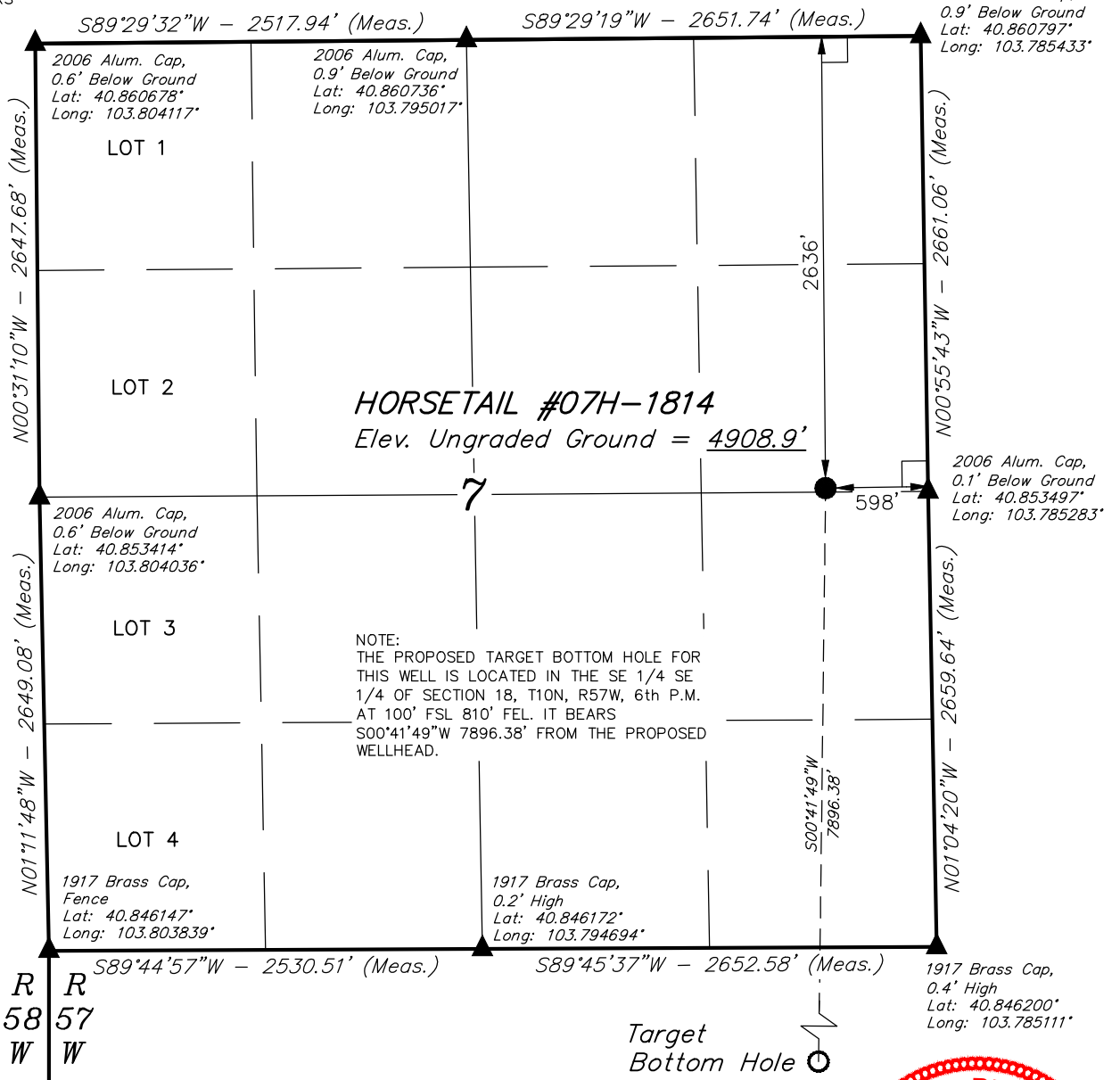


T10N, R57W, 6th P.M.

LEGEND:

- = 90° SYMBOL
- = PROPOSED WELLHEAD.
- = TARGET BOTTOM HOLE.
- = SECTION CORNERS LOCATED.



NOTE:
 THE PROPOSED TARGET BOTTOM HOLE FOR
 THIS WELL IS LOCATED IN THE SE 1/4 SE
 1/4 OF SECTION 18, T10N, R57W, 6th P.M.
 AT 100' FSL 810' FEL. IT BEARS
 S00°41'49"W 7896.38' FROM THE PROPOSED
 WELLHEAD.



NAD 83 (SURFACE LOCATION)
LATITUDE = 40°51'12.78" (40.853550)
LONGITUDE = 103°47'14.80" (103.787444)
NAD 27 (SURFACE LOCATION)
LATITUDE = 40°51'12.84" (40.853567)
LONGITUDE = 103°47'13.00" (103.786944)

CERTIFICATE

THIS IS TO CERTIFY THAT THE ABOVE PLAT WAS PREPARED FROM FIELD NOTES OF ACTUAL SURVEYS MADE BY ME OR UNDER MY SUPERVISION AND THAT THE SAME ARE TRUE AND CORRECT TO THE BEST OF MY KNOWLEDGE AND BELIEF.

[Signature]
 28285

REGISTERED LAND SURVEYOR
 REGISTRATION NO. 28285
 STATE OF COLORADO

COLORADO REGISTERED LAND SURVEYORS
 03-02-15

BASIS OF BEARINGS
 BASIS OF BEARINGS IS A G.P.S. OBSERVATION

BASIS OF ELEVATION

SPOT ELEVATION LOCATED AT THE NORTHEAST CORNER OF SECTION 15, T9N, R57W, 6th P.M. TAKEN FROM THE GATEHOOK SPRING, QUADRANGLE, COLORADO, WELD COUNTY, 7.5 MINUTE QUAD (TOPOGRAPHIC MAP) PUBLISHED BY THE UNITED STATES DEPARTMENT OF THE INTERIOR, GEOLOGICAL SURVEY. SAID ELEVATION IS MARKED AS BEING 4679 FEET.

WHITING OIL & GAS CORP.

HORSETAIL #07H-1814 (SURFACE LOCATION)
 SE 1/4 NE 1/4, SECTION 7, T10N, R57W, 6th P.M.
 WELD COUNTY, COLORADO



UELS, LLC
 Corporate Office * 85 South 200 East
 Vernal, UT 84078 * (435) 789-1017



SURVEYED BY: DALLAS NIELSEN, J.S.	DATE: 12-11-14
DRAWN BY: K.B.	DATE DRAWN: 07-29-14
SCALE: 1" = 1000'	REVISED: 02-25-15

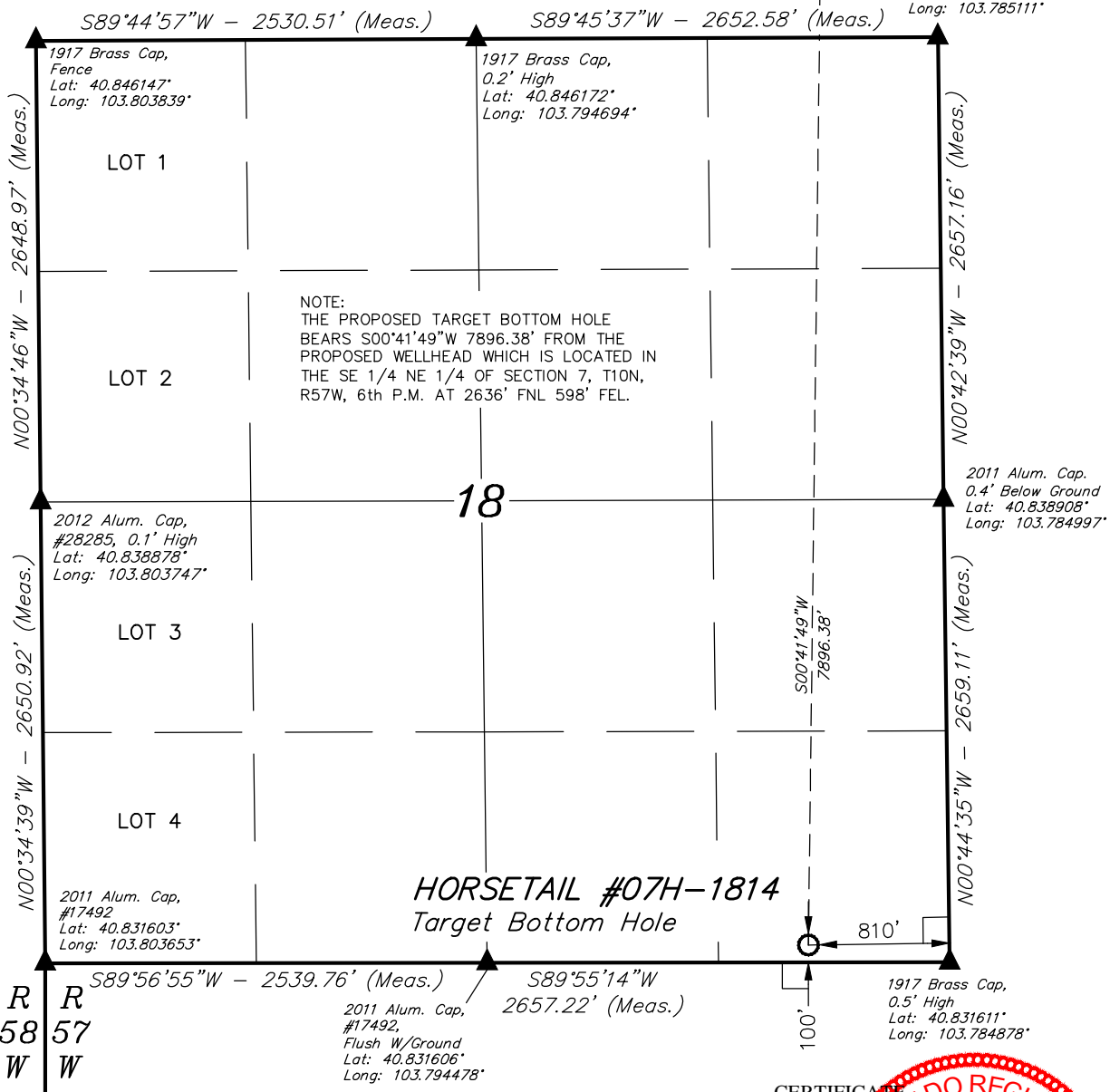
WELL LOCATION PLAT

T10N, R57W, 6th P.M.

LEGEND:

- = 90° SYMBOL
- = PROPOSED WELLHEAD.
- = TARGET BOTTOM HOLE.
- = SECTION CORNERS LOCATED.

Surface Location
 1917 Brass Cap,
 0.4 High,
 Lat: 40.846200°
 Long: 103.785111°



HORSETAIL #07H-1814
 Target Bottom Hole

CERTIFICATE

THIS IS TO CERTIFY THAT THE ABOVE PLAT WAS PREPARED FROM FIELD NOTES OF ACTUAL SURVEYS MADE BY ME OR UNDER MY SUPERVISION AND THAT THE SAME ARE TRUE AND CORRECT TO THE BEST OF MY KNOWLEDGE AND BELIEF.



NAD 83 (TARGET BOTTOM HOLE)
LATITUDE = 40°49'54.79" (40.831886)
LONGITUDE = 103°47'16.11" (103.787808)
NAD 27 (TARGET BOTTOM HOLE)
LATITUDE = 40°49'54.84" (40.831900)
LONGITUDE = 103°47'14.31" (103.787308)



BASIS OF BEARINGS
 BASIS OF BEARINGS IS A G.P.S. OBSERVATION
BASIS OF ELEVATION

SPOT ELEVATION LOCATED AT THE NORTHEAST CORNER OF SECTION 15, T9N, R57W, 6th P.M. TAKEN FROM THE GATEHOOK SPRING, QUADRANGLE, COLORADO, WELD COUNTY, 7.5 MINUTE QUAD (TOPOGRAPHIC MAP) PUBLISHED BY THE UNITED STATES DEPARTMENT OF THE INTERIOR, GEOLOGICAL SURVEY. SAID ELEVATION IS MARKED AS BEING 4679 FEET.

WHITING OIL & GAS CORP.

HORSETAIL #07H-1814 (TARGET BOTTOM HOLE)
 SE 1/4 SE 1/4, SECTION 18, T10N, R57W, 6th P.M.
 WELD COUNTY, COLORADO

SURVEYED BY: DALLAS NIELSEN, J.S.	DATE: 12-11-14
DRAWN BY: K.B.	DATE DRAWN: 07-29-14
SCALE: 1" = 1000'	REVISED: 02-25-15

WELL LOCATION PLAT



UELS, LLC
 Corporate Office * 85 South 200 East
 Vernal, UT 84078 * (435) 789-1017

