

BONANZA CREEK ENERGY INC.

WELD COUNTY, COLORADO (NAD 83)

SE SW SEC. 15 T5N R61W 6th P.M.

PRONGHORN O24-15-10XRLNB

JOB # 2015-012-25

21 March, 2015

Survey: FINAL SURVEYS



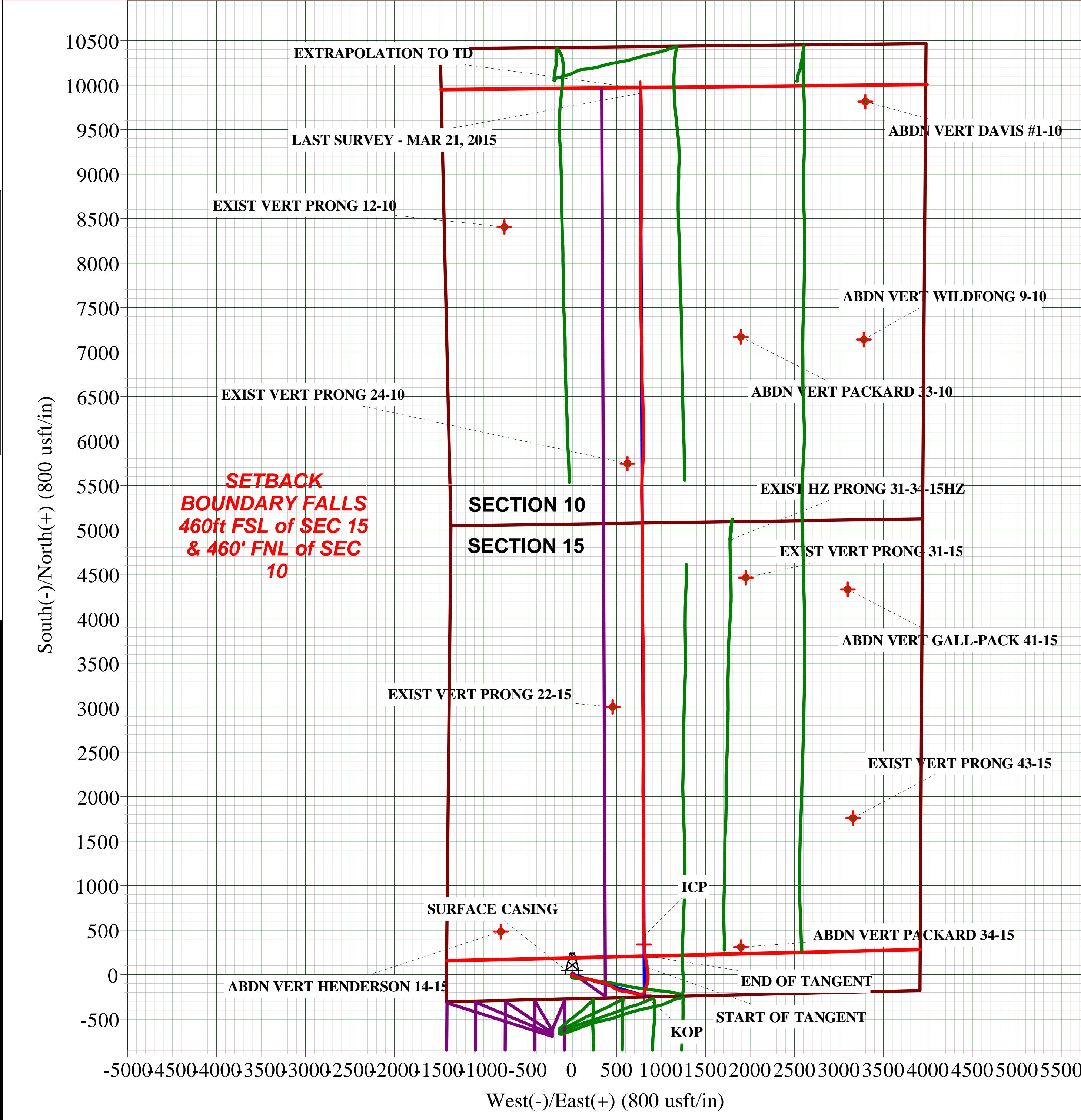
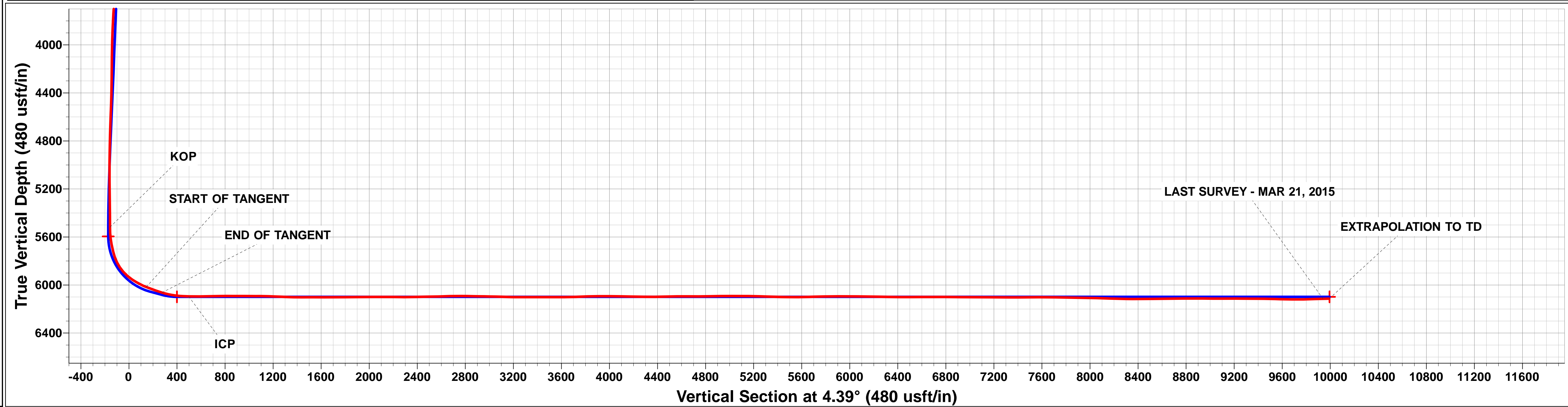
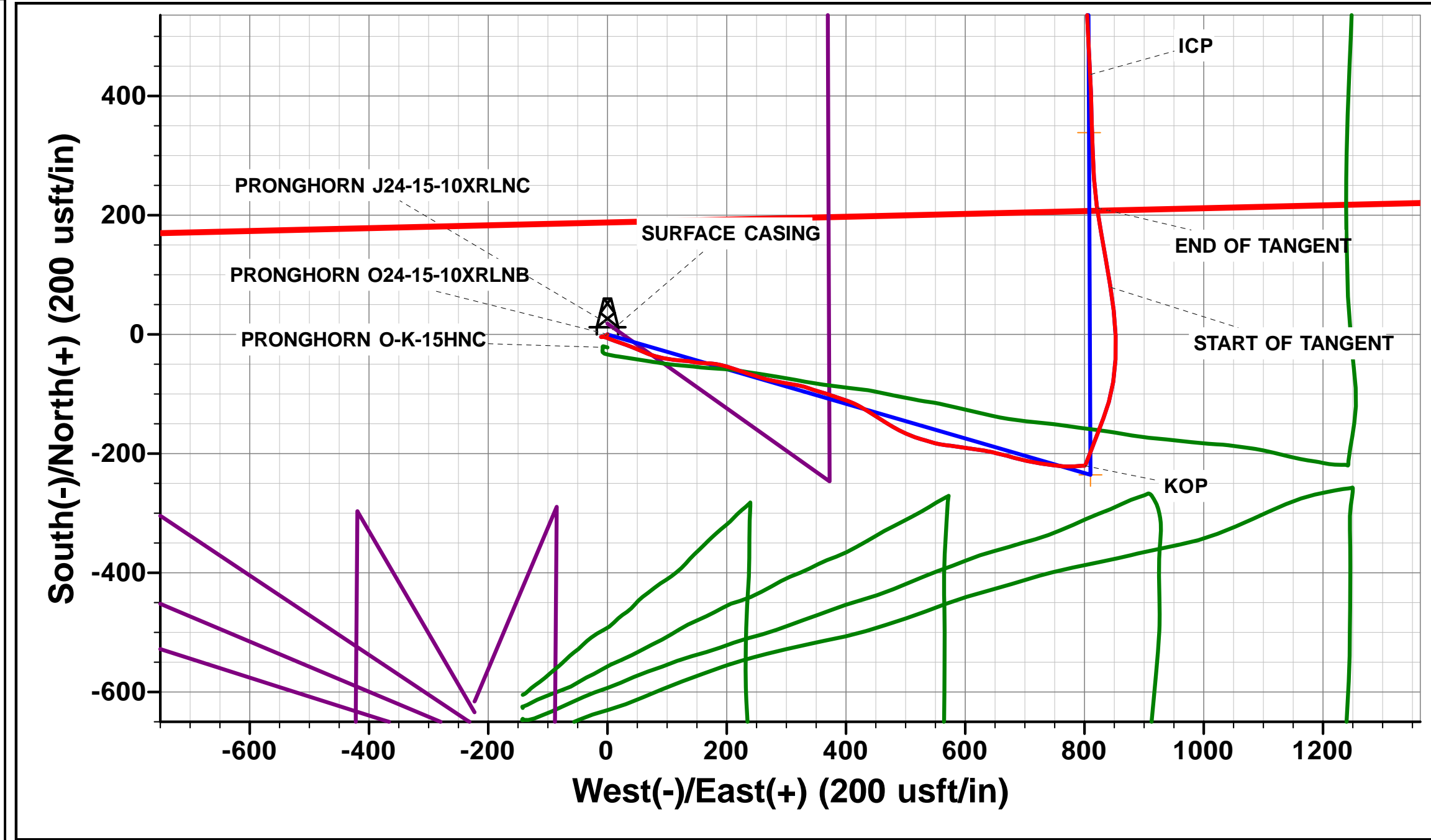
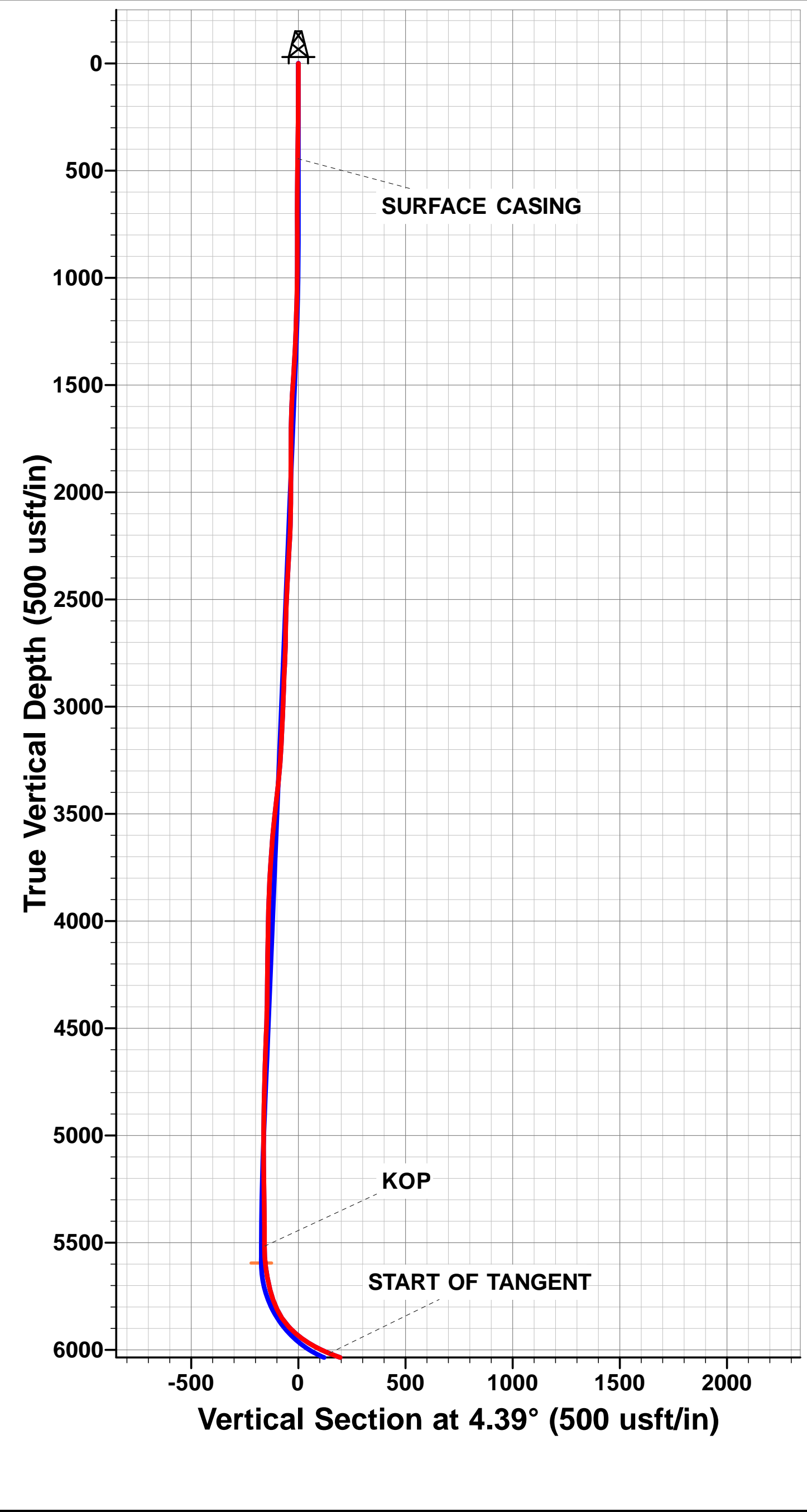


Project: WELD COUNTY, COLORADO (NAD 83)
Site: SE SW SEC. 15 T5N R61W 6th P.M.
Well: PRONGHORN O24-15-10XRLNB
Wellbore: JOB # 2015-012-25
Design: FINAL SURVEYS

ANNOTATIONS									
TVD	MD	Inc	Azi	+N/-S	+E/-W	VSec	Dep	Annotation	
445.0	445.0	1.22	236.80	-2.6	-4.0	-2.9	5.4	SURFACE CASING	
5517.3	5600.0	1.53	84.27	-220.1	800.2	-158.1	861.1	KOP	
6016.6	6231.0	69.02	350.76	79.1	843.7	143.5	1170.0	START OF TANGENT	
6062.8	6374.0	73.07	351.29	212.5	821.0	274.8	1305.2	END OF TANGENT	
6094.9	6601.0	88.22	357.73	436.1	809.9	496.8	1529.2	ICP	
6114.7	16078.0	91.20	357.90	9909.7	771.5	9939.7	11004.8	LAST SURVEY - MAR 21, 2015	
6113.6	16131.0	91.20	357.90	9962.6	769.5	9992.3	11057.8	EXTRAPOLATION TO TD	

PROPOSED LOCAL COORDINATES:
SHL: 270ft FSL & 1417ft FWL Sec 15
7" ICP *NEW*: 589.1ft FNL & 2220ft FWL Sec 15
BHL: 470ft FSL & 2240ft FWL Sec 10

WELLBORE TARGET DETAILS (LAT/LONG)					
Name	TVD	+N/-S	+E/-W	Latitude	Longitude
KOP - PRONGHORN O24-15-10XRLNB (P2)	5595.2	-235.5	810.1	40.393774	-104.196432
7" ICP *NEW* - PRONGHORN O24-15-10XRLNB (P2)	6098.5	338.6	807.6	40.395349	-104.196441
BHL - PRONGHORN O24-15-10XRLNB (P2)	6098.5	9963.9	765.7	40.421770	-104.196590



Survey Report



Company:	BONANZA CREEK ENERGY INC.	Local Co-ordinate Reference:	Well PRONGHORN O24-15-10XRLNB
Project:	WELD COUNTY, COLORADO (NAD 83)	TVD Reference:	KB @ 4685.5usft (CADE 25)
Site:	SE SW SEC. 15 T5N R61W 6th P.M.	MD Reference:	KB @ 4685.5usft (CADE 25)
Well:	PRONGHORN O24-15-10XRLNB	North Reference:	True
Wellbore:	JOB # 2015-012-25	Survey Calculation Method:	Minimum Curvature
Design:	FINAL SURVEYS	Database:	EDM 5000.1 Single User Db

Project	WELD COUNTY, COLORADO (NAD 83)		
Map System:	US State Plane 1983	System Datum:	Mean Sea Level
Geo Datum:	North American Datum 1983		
Map Zone:	Colorado Northern Zone		Using geodetic scale factor

Site	SE SW SEC. 15 T5N R61W 6th P.M.				
Site Position:		Northing:	1,389,184.46 usft	Latitude:	40.394420
From:	Lat/Long	Easting:	3,362,264.11 usft	Longitude:	-104.199340
Position Uncertainty:	0.0 usft	Slot Radius:	1.10000 ft	Grid Convergence:	0.84 °

Well	PRONGHORN O24-15-10XRLNB					
Well Position	+N/-S	0.0 usft	Northing:	1,389,184.46 usft	Latitude:	40.394420
	+E/-W	0.0 usft	Easting:	3,362,264.11 usft	Longitude:	-104.199340
Position Uncertainty		0.0 usft	Wellhead Elevation:	usft	Ground Level:	4,669.0 usft

Wellbore	JOB # 2015-012-25				
Magnetics	Model Name	Sample Date	Declination (°)	Dip Angle (°)	Field Strength (nT)
	IGRF2010	11/11/2014	8.10	67.02	52,828

Design	FINAL SURVEYS				
Audit Notes:					
Version:	1.0	Phase:	ACTUAL	Tie On Depth:	0.0
Vertical Section:	Depth From (TVD) (usft)	+N/-S (usft)	+E/-W (usft)	Direction (°)	
	0.0	0.0	0.0	4.39	

Survey Program	Date	21/03/2015			
From (usft)	To (usft)	Survey (Wellbore)	Tool Name	Description	
512.0	16,131.0	FINAL SURVEYS (JOB # 2015-012-25)	MWD	MWD - Standard	

Survey										
Measured Depth (usft)	Inclination (°)	Azimuth (°)	Vertical Depth (usft)	Subsea Depth (usft)	+N/-S (usft)	+E/-W (usft)	Vertical Section (usft)	Dogleg Rate (°/100usft)	Build Rate (°/100usft)	Turn Rate (°/100usft)
0.0	0.00	0.00	0.0	4,685.5	0.0	0.0	0.0	0.00	0.00	0.00
SURFACE CASING										
445.0	1.22	236.80	445.0	4,240.5	-2.6	-4.0	-2.9	0.27	0.27	0.00
512.0	1.40	236.80	511.9	4,173.6	-3.4	-5.2	-3.8	0.27	0.27	0.00
605.0	1.60	266.80	604.9	4,080.6	-4.1	-7.5	-4.7	0.86	0.22	32.26
698.0	1.40	264.00	697.9	3,987.6	-4.3	-9.9	-5.1	0.23	-0.22	-3.01
789.0	0.60	50.20	788.9	3,896.6	-4.1	-10.6	-4.9	2.12	-0.88	160.66
882.0	1.80	95.20	881.9	3,803.6	-3.9	-8.8	-4.6	1.55	1.29	48.39
974.0	3.70	99.20	973.7	3,711.8	-4.5	-4.4	-4.9	2.07	2.07	4.35
1,067.0	3.60	116.00	1,066.6	3,618.9	-6.3	1.1	-6.2	1.15	-0.11	18.06
1,160.0	5.90	111.10	1,159.2	3,526.3	-9.3	8.2	-8.7	2.51	2.47	-5.27
1,252.0	8.60	108.10	1,250.5	3,435.0	-13.1	19.2	-11.6	2.96	2.93	-3.26
1,342.0	10.50	110.30	1,339.2	3,346.3	-18.1	33.3	-15.5	2.15	2.11	2.44

Survey Report



Company:	BONANZA CREEK ENERGY INC.	Local Co-ordinate Reference:	Well PRONGHORN O24-15-10XRLNB
Project:	WELD COUNTY, COLORADO (NAD 83)	TVD Reference:	KB @ 4685.5usft (CADE 25)
Site:	SE SW SEC. 15 T5N R61W 6th P.M.	MD Reference:	KB @ 4685.5usft (CADE 25)
Well:	PRONGHORN O24-15-10XRLNB	North Reference:	True
Wellbore:	JOB # 2015-012-25	Survey Calculation Method:	Minimum Curvature
Design:	FINAL SURVEYS	Database:	EDM 5000.1 Single User Db

Survey										
Measured Depth (usft)	Inclination (°)	Azimuth (°)	Vertical Depth (usft)	Subsea Depth (usft)	+N/-S (usft)	+E/-W (usft)	Vertical Section (usft)	Dogleg Rate (°/100usft)	Build Rate (°/100usft)	Turn Rate (°/100usft)
1,435.0	12.10	113.20	1,430.4	3,255.1	-24.9	50.2	-20.9	1.83	1.72	3.12
1,528.0	11.50	112.30	1,521.5	3,164.0	-32.2	67.7	-26.9	0.67	-0.65	-0.97
1,619.0	12.90	102.90	1,610.4	3,075.1	-37.9	86.0	-31.2	2.67	1.54	-10.33
1,712.0	12.10	99.40	1,701.2	2,984.3	-41.8	105.7	-33.6	1.18	-0.86	-3.76
1,803.0	11.30	92.00	1,790.3	2,895.2	-43.7	124.1	-34.1	1.87	-0.88	-8.13
1,896.0	10.00	102.10	1,881.7	2,803.8	-45.7	141.1	-34.8	2.44	-1.40	10.86
1,991.0	10.40	92.50	1,975.2	2,710.3	-47.8	157.7	-35.6	1.84	0.42	-10.11
2,086.0	12.10	95.20	2,068.4	2,617.1	-49.1	176.2	-35.5	1.87	1.79	2.84
2,181.0	11.90	104.50	2,161.3	2,524.2	-52.5	195.6	-37.3	2.04	-0.21	9.79
2,277.0	13.20	110.90	2,255.1	2,430.4	-58.8	215.4	-42.2	1.98	1.35	6.67
2,373.0	12.40	106.20	2,348.7	2,336.8	-65.6	235.5	-47.4	1.37	-0.83	-4.90
2,468.0	14.00	108.00	2,441.2	2,244.3	-72.0	256.3	-52.2	1.74	1.68	1.89
2,563.0	13.20	101.30	2,533.5	2,152.0	-77.7	277.8	-56.2	1.86	-0.84	-7.05
2,658.0	12.20	101.10	2,626.2	2,059.3	-81.8	298.3	-58.7	1.05	-1.05	-0.21
2,752.0	11.50	97.70	2,718.2	1,967.3	-84.9	317.4	-60.4	1.05	-0.74	-3.62
2,848.0	11.70	110.90	2,812.2	1,873.3	-89.7	335.9	-63.7	2.77	0.21	13.75
2,940.0	10.20	104.50	2,902.6	1,782.9	-95.1	352.5	-67.8	2.10	-1.63	-6.96
3,035.0	10.00	109.30	2,996.1	1,689.4	-99.9	368.5	-71.4	0.91	-0.21	5.05
3,129.0	11.30	108.20	3,088.5	1,597.0	-105.5	384.9	-75.7	1.40	1.38	-1.17
3,224.0	10.20	108.50	3,181.8	1,503.7	-111.0	401.7	-79.9	1.16	-1.16	0.32
3,319.0	12.10	117.80	3,275.0	1,410.5	-118.4	418.5	-85.9	2.75	2.00	9.79
3,413.0	12.90	121.80	3,366.8	1,318.7	-128.5	436.2	-94.7	1.25	0.85	4.26
3,508.0	13.00	121.90	3,459.4	1,226.1	-139.7	454.2	-104.5	0.11	0.11	0.11
3,603.0	13.50	122.60	3,551.8	1,133.7	-151.3	472.7	-114.7	0.55	0.53	0.74
3,696.0	11.30	114.90	3,642.7	1,042.8	-161.0	490.1	-123.0	2.95	-2.37	-8.28
3,792.0	11.00	114.80	3,736.9	948.6	-168.8	506.9	-129.5	0.31	-0.31	-0.10
3,889.0	11.70	105.30	3,832.0	853.5	-175.3	524.8	-134.6	2.06	0.72	-9.79
3,984.0	10.20	107.70	3,925.2	760.3	-180.4	542.1	-138.3	1.65	-1.58	2.53
4,079.0	10.00	99.50	4,018.8	666.7	-184.3	558.3	-141.0	1.53	-0.21	-8.63
4,174.0	11.30	96.60	4,112.1	573.4	-186.7	575.6	-142.1	1.48	1.37	-3.05
4,268.0	11.50	98.70	4,204.3	481.2	-189.2	594.1	-143.2	0.49	0.21	2.23
4,364.0	11.80	98.60	4,298.3	387.2	-192.1	613.2	-144.6	0.31	0.31	-0.10
4,459.0	11.30	98.50	4,391.4	294.1	-195.0	632.0	-146.0	0.53	-0.53	-0.11
4,554.0	13.10	104.30	4,484.2	201.3	-199.0	651.7	-148.5	2.29	1.89	6.11
4,648.0	11.00	103.90	4,576.1	109.4	-203.8	670.7	-151.8	2.24	-2.23	-0.43
4,743.0	12.00	105.50	4,669.2	16.3	-208.6	689.0	-155.2	1.10	1.05	1.68
4,840.0	11.00	101.00	4,764.3	-78.8	-213.1	707.8	-158.2	1.38	-1.03	-4.64
4,935.0	11.30	98.30	4,857.5	-172.0	-216.1	725.9	-159.9	0.63	0.32	-2.84
5,031.0	11.20	99.20	4,951.7	-266.2	-219.0	744.4	-161.3	0.21	-0.10	0.94
5,127.0	8.60	93.70	5,046.2	-360.7	-220.9	760.8	-162.0	2.88	-2.71	-5.73
5,223.0	6.30	91.60	5,141.4	-455.9	-221.6	773.2	-161.7	2.41	-2.40	-2.19
5,317.0	5.20	86.00	5,234.9	-549.4	-221.4	782.6	-160.8	1.31	-1.17	-5.96
5,412.0	4.30	82.30	5,329.6	-644.1	-220.6	790.5	-159.4	1.00	-0.95	-3.89
5,508.0	3.00	90.40	5,425.4	-739.9	-220.2	796.5	-158.5	1.45	-1.35	8.44
KOP										
5,600.0	1.53	84.27	5,517.3	-831.8	-220.1	800.2	-158.1	1.62	-1.60	-6.67
5,602.0	1.50	84.00	5,519.3	-833.8	-220.0	800.2	-158.1	1.62	-1.58	-13.31
5,650.0	3.80	31.50	5,567.3	-881.8	-218.6	801.7	-156.6	6.50	4.79	-109.37
5,697.0	7.60	20.30	5,614.0	-928.5	-214.4	803.6	-152.2	8.39	8.09	-23.83
5,745.0	11.10	20.80	5,661.4	-975.9	-207.1	806.3	-144.7	7.29	7.29	1.04
5,806.0	14.60	21.70	5,720.9	-1,035.4	-194.4	811.2	-131.7	5.75	5.74	1.48
5,854.0	20.00	20.00	5,766.7	-1,081.2	-181.1	816.3	-118.0	11.30	11.25	-3.54
5,902.0	26.30	21.80	5,810.8	-1,125.3	-163.5	823.1	-100.0	13.21	13.12	3.75

Survey Report



Company:	BONANZA CREEK ENERGY INC.	Local Co-ordinate Reference:	Well PRONGHORN O24-15-10XRLNB
Project:	WELD COUNTY, COLORADO (NAD 83)	TVD Reference:	KB @ 4685.5usft (CADE 25)
Site:	SE SW SEC. 15 T5N R61W 6th P.M.	KB Reference:	KB @ 4685.5usft (CADE 25)
Well:	PRONGHORN O24-15-10XRLNB	North Reference:	True
Wellbore:	JOB # 2015-012-25	Survey Calculation Method:	Minimum Curvature
Design:	FINAL SURVEYS	Database:	EDM 5000.1 Single User Db

Survey										
Measured Depth (usft)	Inclination (°)	Azimuth (°)	Vertical Depth (usft)	Subsea Depth (usft)	+N/-S (usft)	+E/-W (usft)	Vertical Section (usft)	Dogleg Rate (°/100usft)	Build Rate (°/100usft)	Turn Rate (°/100usft)
5,950.0	34.70	20.30	5,852.1	-1,166.6	-140.8	831.8	-76.6	17.57	17.50	-3.12
5,997.0	42.20	16.40	5,888.9	-1,203.4	-113.0	840.9	-48.3	16.76	15.96	-8.30
6,045.0	48.80	9.00	5,922.5	-1,237.0	-79.7	848.3	-14.4	17.59	13.75	-15.42
6,093.0	55.30	2.70	5,952.1	-1,266.6	-42.1	852.0	23.3	17.03	13.54	-13.12
6,141.0	61.30	358.30	5,977.3	-1,291.8	-1.3	852.3	64.1	14.73	12.50	-9.17
6,188.0	63.20	353.10	5,999.2	-1,313.7	40.2	849.2	105.1	10.59	4.04	-11.06
START OF TANGENT										
6,231.0	69.02	350.76	6,016.6	-1,331.1	79.1	843.7	143.5	14.42	13.54	-5.44
6,236.0	69.70	350.50	6,018.3	-1,332.8	83.7	842.9	148.1	14.42	13.58	-5.19
6,283.0	70.60	350.10	6,034.3	-1,348.8	127.3	835.4	190.9	2.08	1.91	-0.85
6,331.0	71.70	350.10	6,049.8	-1,364.3	172.0	827.6	234.9	2.29	2.29	0.00
END OF TANGENT										
6,374.0	73.07	351.29	6,062.8	-1,377.3	212.5	821.0	274.8	4.14	3.19	2.77
6,378.0	73.20	351.40	6,064.0	-1,378.5	216.3	820.4	278.5	4.14	3.20	2.75
6,426.0	77.90	357.20	6,076.0	-1,390.5	262.5	815.9	324.2	15.25	9.79	12.08
6,475.0	81.00	357.50	6,084.9	-1,399.4	310.6	813.6	372.0	6.36	6.33	0.61
6,523.0	85.50	358.90	6,090.6	-1,405.1	358.2	812.1	419.4	9.81	9.37	2.92
6,571.0	87.10	358.30	6,093.7	-1,408.2	406.1	811.0	467.1	3.56	3.33	-1.25
ICP										
6,601.0	88.22	357.73	6,094.9	-1,409.4	436.1	809.9	496.8	4.20	3.74	-1.92
6,686.0	91.40	356.10	6,095.2	-1,409.7	520.9	805.3	581.1	4.20	3.74	-1.91
6,780.0	91.30	358.20	6,093.0	-1,407.5	614.8	800.7	674.3	2.24	-0.11	2.23
6,876.0	89.90	358.40	6,092.0	-1,406.5	710.7	797.8	769.8	1.47	-1.46	0.21
6,970.0	90.60	0.50	6,091.6	-1,406.1	804.7	796.9	863.4	2.35	0.74	2.23
7,066.0	89.50	1.20	6,091.5	-1,406.0	900.7	798.3	959.2	1.36	-1.15	0.73
7,162.0	89.30	1.20	6,092.5	-1,407.0	996.7	800.4	1,055.1	0.21	-0.21	0.00
7,258.0	89.50	0.90	6,093.5	-1,408.0	1,092.7	802.1	1,150.9	0.38	0.21	-0.31
7,354.0	86.70	359.50	6,096.7	-1,411.2	1,188.6	802.5	1,246.6	3.26	-2.92	-1.46
7,449.0	88.20	359.80	6,100.9	-1,415.4	1,283.5	801.9	1,341.2	1.61	1.58	0.32
7,543.0	90.40	0.60	6,102.0	-1,416.5	1,377.5	802.2	1,434.9	2.49	2.34	0.85
7,639.0	89.80	0.30	6,101.9	-1,416.4	1,473.5	803.0	1,530.7	0.70	-0.62	-0.31
7,735.0	90.00	0.00	6,102.0	-1,416.5	1,569.5	803.2	1,626.4	0.38	0.21	-0.31
7,830.0	90.10	359.70	6,102.0	-1,416.5	1,664.5	803.0	1,721.1	0.33	0.11	-0.32
7,925.0	90.90	359.80	6,101.1	-1,415.6	1,759.5	802.5	1,815.8	0.85	0.84	0.11
8,021.0	90.50	358.50	6,100.0	-1,414.5	1,855.5	801.1	1,911.4	1.42	-0.42	-1.35
8,116.0	90.50	357.50	6,099.1	-1,413.6	1,950.4	797.8	2,005.8	1.05	0.00	-1.05
8,212.0	89.60	359.60	6,099.0	-1,413.5	2,046.4	795.4	2,101.3	2.38	-0.94	2.19
8,308.0	89.40	0.70	6,099.9	-1,414.4	2,142.4	795.6	2,197.0	1.16	-0.21	1.15
8,403.0	89.80	0.30	6,100.5	-1,415.0	2,237.3	796.5	2,291.8	0.60	0.42	-0.42
8,498.0	91.90	1.10	6,099.1	-1,413.6	2,332.3	797.6	2,386.6	2.37	2.21	0.84
8,594.0	90.50	0.70	6,097.1	-1,411.6	2,428.3	799.1	2,482.4	1.52	-1.46	-0.42
8,689.0	91.80	1.00	6,095.2	-1,409.7	2,523.3	800.5	2,577.2	1.40	1.37	0.32
8,785.0	91.40	359.70	6,092.5	-1,407.0	2,619.2	801.1	2,672.9	1.42	-0.42	-1.35
8,880.0	89.90	359.10	6,091.5	-1,406.0	2,714.2	800.1	2,767.5	1.70	-1.58	-0.63
8,976.0	88.40	359.00	6,092.9	-1,407.4	2,810.2	798.5	2,863.1	1.57	-1.56	-0.10
9,070.0	89.50	359.10	6,094.6	-1,409.1	2,904.1	797.0	2,956.7	1.18	1.17	0.11
9,167.0	88.30	359.10	6,096.5	-1,411.0	3,001.1	795.4	3,053.2	1.24	-1.24	0.00
9,262.0	88.20	358.90	6,099.4	-1,413.9	3,096.1	793.8	3,147.8	0.24	-0.11	-0.21
9,359.0	90.00	0.60	6,100.9	-1,415.4	3,193.0	793.4	3,244.4	2.55	1.86	1.75
9,454.0	90.00	0.90	6,100.9	-1,415.4	3,288.0	794.6	3,339.2	0.32	0.00	0.32
9,549.0	90.20	1.30	6,100.7	-1,415.2	3,383.0	796.4	3,434.1	0.47	0.21	0.42
9,644.0	89.60	0.80	6,100.9	-1,415.4	3,478.0	798.2	3,528.9	0.82	-0.63	-0.53
9,741.0	90.60	0.00	6,100.7	-1,415.2	3,575.0	798.9	3,625.7	1.32	1.03	-0.82

Survey Report



Company:	BONANZA CREEK ENERGY INC.	Local Co-ordinate Reference:	Well PRONGHORN O24-15-10XRLNB
Project:	WELD COUNTY, COLORADO (NAD 83)	TVD Reference:	KB @ 4685.5usft (CADE 25)
Site:	SE SW SEC. 15 T5N R61W 6th P.M.	MD Reference:	KB @ 4685.5usft (CADE 25)
Well:	PRONGHORN O24-15-10XRLNB	North Reference:	True
Wellbore:	JOB # 2015-012-25	Survey Calculation Method:	Minimum Curvature
Design:	FINAL SURVEYS	Database:	EDM 5000.1 Single User Db

Survey										
Measured Depth (usft)	Inclination (°)	Azimuth (°)	Vertical Depth (usft)	Subsea Depth (usft)	+N/-S (usft)	+E/-W (usft)	Vertical Section (usft)	Dogleg Rate (°/100usft)	Build Rate (°/100usft)	Turn Rate (°/100usft)
9,836.0	91.90	359.20	6,098.7	-1,413.2	3,670.0	798.2	3,720.3	1.61	1.37	-0.84
9,932.0	92.50	358.70	6,095.0	-1,409.5	3,765.9	796.4	3,815.8	0.81	0.62	-0.52
10,027.0	89.90	358.50	6,093.0	-1,407.5	3,860.8	794.1	3,910.3	2.74	-2.74	-0.21
10,121.0	89.80	358.00	6,093.2	-1,407.7	3,954.8	791.2	4,003.8	0.54	-0.11	-0.53
10,216.0	88.50	0.00	6,094.6	-1,409.1	4,049.7	789.6	4,098.3	2.51	-1.37	2.11
10,310.0	89.30	359.70	6,096.4	-1,410.9	4,143.7	789.3	4,192.0	0.91	0.85	-0.32
10,405.0	88.90	359.60	6,097.9	-1,412.4	4,238.7	788.8	4,286.7	0.43	-0.42	-0.11
10,497.0	90.90	0.60	6,098.1	-1,412.6	4,330.7	788.9	4,378.4	2.43	2.17	1.09
10,589.0	91.50	0.10	6,096.2	-1,410.7	4,422.7	789.5	4,470.2	0.85	0.65	-0.54
10,682.0	90.50	359.90	6,094.5	-1,409.0	4,515.7	789.5	4,562.9	1.10	-1.08	-0.22
10,772.0	89.60	359.50	6,094.5	-1,409.0	4,605.7	789.0	4,652.6	1.09	-1.00	-0.44
10,864.0	90.00	0.50	6,094.8	-1,409.3	4,697.7	789.0	4,744.3	1.17	0.43	1.09
10,956.0	91.40	0.80	6,093.7	-1,408.2	4,789.6	790.1	4,836.1	1.56	1.52	0.33
11,049.0	90.70	359.60	6,092.0	-1,406.5	4,882.6	790.4	4,928.8	1.49	-0.75	-1.29
11,141.0	89.50	359.00	6,091.8	-1,406.3	4,974.6	789.3	5,020.5	1.46	-1.30	-0.65
11,234.0	90.10	358.70	6,092.1	-1,406.6	5,067.6	787.4	5,113.0	0.72	0.65	-0.32
11,326.0	88.90	359.40	6,092.9	-1,407.4	5,159.6	785.9	5,204.6	1.51	-1.30	0.76
11,418.0	87.80	358.50	6,095.6	-1,410.1	5,251.5	784.2	5,296.2	1.54	-1.20	-0.98
11,511.0	88.80	359.00	6,098.3	-1,412.8	5,344.5	782.1	5,388.7	1.20	1.08	0.54
11,602.0	88.60	0.20	6,100.4	-1,414.9	5,435.4	781.5	5,479.3	1.34	-0.22	1.32
11,695.0	91.00	1.90	6,100.7	-1,415.2	5,528.4	783.2	5,572.2	3.16	2.58	1.83
11,786.0	91.20	2.50	6,099.0	-1,413.5	5,619.3	786.7	5,663.1	0.69	0.22	0.66
11,878.0	91.40	4.50	6,096.9	-1,411.4	5,711.1	792.3	5,755.0	2.18	0.22	2.17
11,970.0	91.80	3.20	6,094.3	-1,408.8	5,802.9	798.5	5,847.0	1.48	0.43	-1.41
12,062.0	89.40	0.60	6,093.4	-1,407.9	5,894.8	801.5	5,938.9	3.85	-2.61	-2.83
12,154.0	88.80	359.80	6,094.8	-1,409.3	5,986.8	801.9	6,030.6	1.09	-0.65	-0.87
12,247.0	89.70	358.80	6,096.0	-1,410.5	6,079.8	800.7	6,123.2	1.45	0.97	-1.08
12,341.0	89.20	359.70	6,096.9	-1,411.4	6,173.8	799.5	6,216.9	1.10	-0.53	0.96
12,437.0	88.40	359.00	6,098.9	-1,413.4	6,269.7	798.4	6,312.5	1.11	-0.83	-0.73
12,532.0	89.80	358.30	6,100.4	-1,414.9	6,364.7	796.2	6,407.0	1.65	1.47	-0.74
12,628.0	90.50	358.00	6,100.2	-1,414.7	6,460.6	793.1	6,502.4	0.79	0.73	-0.31
12,721.0	89.80	357.40	6,099.9	-1,414.4	6,553.6	789.3	6,594.8	0.99	-0.75	-0.65
12,816.0	90.60	358.50	6,099.6	-1,414.1	6,648.5	785.9	6,689.2	1.43	0.84	1.16
12,910.0	89.60	0.10	6,099.4	-1,413.9	6,742.5	784.8	6,782.8	2.01	-1.06	1.70
12,986.0	89.40	0.40	6,100.1	-1,414.6	6,818.5	785.1	6,858.6	0.47	-0.26	0.39
13,080.0	89.50	359.40	6,101.0	-1,415.5	6,912.5	785.0	6,952.3	1.07	0.11	-1.06
13,170.0	90.30	358.80	6,101.2	-1,415.7	7,002.5	783.6	7,041.9	1.11	0.89	-0.67
13,264.0	89.20	358.40	6,101.6	-1,416.1	7,096.4	781.3	7,135.4	1.25	-1.17	-0.43
13,357.0	89.40	358.40	6,102.7	-1,417.2	7,189.4	778.7	7,227.9	0.22	0.22	0.00
13,449.0	90.50	358.10	6,102.8	-1,417.3	7,281.3	775.9	7,319.4	1.24	1.20	-0.33
13,542.0	89.50	358.70	6,102.8	-1,417.3	7,374.3	773.3	7,411.9	1.25	-1.08	0.65
13,635.0	91.20	359.20	6,102.2	-1,416.7	7,467.3	771.5	7,504.4	1.91	1.83	0.54
13,728.0	89.40	359.80	6,101.7	-1,416.2	7,560.3	770.7	7,597.1	2.04	-1.94	0.65
13,821.0	89.80	358.90	6,102.4	-1,416.9	7,653.3	769.7	7,689.7	1.06	0.43	-0.97
13,914.0	88.60	359.20	6,103.7	-1,418.2	7,746.2	768.1	7,782.3	1.33	-1.29	0.32
14,007.0	89.40	359.00	6,105.3	-1,419.8	7,839.2	766.7	7,874.9	0.89	0.86	-0.22
14,099.0	88.70	0.40	6,106.8	-1,421.3	7,931.2	766.2	7,966.6	1.70	-0.76	1.52
14,193.0	88.50	359.80	6,109.1	-1,423.6	8,025.2	766.4	8,060.3	0.67	-0.21	-0.64
14,298.0	88.20	0.60	6,112.1	-1,426.6	8,130.1	766.7	8,165.0	0.81	-0.29	0.76
14,393.0	88.50	1.70	6,114.9	-1,429.4	8,225.1	768.6	8,259.8	1.20	0.32	1.16
14,489.0	89.60	1.20	6,116.5	-1,431.0	8,321.0	771.1	8,355.6	1.26	1.15	-0.52
14,584.0	90.00	1.20	6,116.8	-1,431.3	8,416.0	773.1	8,450.5	0.42	0.42	0.00
14,680.0	91.90	1.50	6,115.2	-1,429.7	8,512.0	775.3	8,546.3	2.00	1.98	0.31

Survey Report



Company:	BONANZA CREEK ENERGY INC.	Local Co-ordinate Reference:	Well PRONGHORN O24-15-10XRLNB
Project:	WELD COUNTY, COLORADO (NAD 83)	TVD Reference:	KB @ 4685.5usft (CADE 25)
Site:	SE SW SEC. 15 T5N R61W 6th P.M.	MD Reference:	KB @ 4685.5usft (CADE 25)
Well:	PRONGHORN O24-15-10XRLNB	North Reference:	True
Wellbore:	JOB # 2015-012-25	Survey Calculation Method:	Minimum Curvature
Design:	FINAL SURVEYS	Database:	EDM 5000.1 Single User Db

Survey										
Measured Depth (usft)	Inclination (°)	Azimuth (°)	Vertical Depth (usft)	Subsea Depth (usft)	+N/-S (usft)	+E/-W (usft)	Vertical Section (usft)	Dogleg Rate (°/100usft)	Build Rate (°/100usft)	Turn Rate (°/100usft)
14,775.0	90.70	0.20	6,113.1	-1,427.6	8,606.9	776.7	8,641.1	1.86	-1.26	-1.37
14,871.0	90.30	359.80	6,112.2	-1,426.7	8,702.9	776.7	8,736.8	0.59	-0.42	-0.42
14,965.0	89.60	359.90	6,112.3	-1,426.8	8,796.9	776.5	8,830.5	0.75	-0.74	0.11
15,060.0	90.10	359.70	6,112.5	-1,427.0	8,891.9	776.1	8,925.2	0.57	0.53	-0.21
15,155.0	89.20	359.70	6,113.1	-1,427.6	8,986.9	775.6	9,019.9	0.95	-0.95	0.00
15,249.0	90.60	359.80	6,113.3	-1,427.8	9,080.9	775.2	9,113.6	1.49	1.49	0.11
15,344.0	90.00	0.30	6,112.8	-1,427.3	9,175.9	775.3	9,208.3	0.82	-0.63	0.53
15,439.0	88.80	0.30	6,113.8	-1,428.3	9,270.9	775.8	9,303.1	1.26	-1.26	0.00
15,534.0	90.60	0.50	6,114.3	-1,428.8	9,365.9	776.5	9,397.8	1.91	1.89	0.21
15,629.0	88.30	0.40	6,115.2	-1,429.7	9,460.9	777.2	9,492.6	2.42	-2.42	-0.11
15,723.0	88.50	359.70	6,117.8	-1,432.3	9,554.8	777.3	9,586.3	0.77	0.21	-0.74
15,819.0	89.40	359.30	6,119.6	-1,434.1	9,650.8	776.5	9,681.9	1.03	0.94	-0.42
15,915.0	90.90	359.20	6,119.3	-1,433.8	9,746.8	775.2	9,777.5	1.57	1.56	-0.10
16,010.0	92.20	358.70	6,116.8	-1,431.3	9,841.7	773.5	9,872.1	1.47	1.37	-0.53
LAST SURVEY - MAR 21, 2015										
16,078.0	91.20	357.90	6,114.7	-1,429.2	9,909.7	771.5	9,939.7	1.88	-1.47	-1.18
EXTRAPOLATION TO TD										
16,131.0	91.20	357.90	6,113.6	-1,428.1	9,962.6	769.5	9,992.3	0.00	0.00	0.00

Survey Report



Company:	BONANZA CREEK ENERGY INC.	Local Co-ordinate Reference:	Well PRONGHORN O24-15-10XRLNB
Project:	WELD COUNTY, COLORADO (NAD 83)	TVD Reference:	KB @ 4685.5usft (CADE 25)
Site:	SE SW SEC. 15 T5N R61W 6th P.M.	MD Reference:	KB @ 4685.5usft (CADE 25)
Well:	PRONGHORN O24-15-10XRLNB	North Reference:	True
Wellbore:	JOB # 2015-012-25	Survey Calculation Method:	Minimum Curvature
Design:	FINAL SURVEYS	Database:	EDM 5000.1 Single User Db

7" ICP *NEW* - PRONG 0.00 0.00 6,098.5 338.6 807.6 1,389,534.86 3,363,066.62 40.395349 -104.196441
 - survey misses target center by 10.9usft at 6504.6usft MD (6088.9 TVD, 339.9 N, 812.6 E)
 - Point

Survey Annotations				
Measured Depth (usft)	Vertical Depth (usft)	Local Coordinates		Comment
		+N/-S (usft)	+E/-W (usft)	
445.0	445.0	-2.6	-4.0	SURFACE CASING
5,600.0	5,517.3	-220.1	800.2	KOP
6,231.0	6,016.6	79.1	843.7	START OF TANGENT
6,374.0	6,062.8	212.5	821.0	END OF TANGENT
6,601.0	6,094.9	436.1	809.9	ICP
16,078.0	6,114.7	9,909.7	771.5	LAST SURVEY - MAR 21, 2015
16,131.0	6,113.6	9,962.6	769.5	EXTRAPOLATION TO TD

Checked By: _____ Approved By: _____ Date: _____