



Project: Weld County, CO
Site: Sec 7-T10N-R57W
Well: Horsetail Fed #07F-0639
Wellbore: Hz
Design: Design #1

PROJECT DETAILS: Weld County, CO

Geodetic System: US State Plane 1983
Datum: North American Datum 1983
Ellipsoid: GRS 1980
Zone: Colorado Northern Zone
System Datum: Mean Sea Level

FORMATION TOP DETAILS

MDPath	MDPath	Formation
1550.00	1557.64	Upper Pierre
3500.00	3522.28	Hygiene
3650.00	3673.41	Lower Pierre
5515.00	5548.37	P200 Marker
5530.00	5563.60	P300 Marker
5550.00	5584.02	P350 Marker
5702.00	5748.53	Sharon Springs
5707.00	5754.38	Niobrara
5727.00	5778.20	Top A Chalk
5764.00	5824.40	Top A Marl
5783.00	5849.45	A Marl
5792.00	5861.70	Top Upper B
5820.00	5901.73	Base Upper B
5837.00	5927.77	Top Lower B
5857.00	5960.60	Base Lower B
5864.00	5972.79	Top B Marl
5914.00	6077.30	Top C Chalk
5922.00	6098.95	Middle C Chalk
5936.00	6144.23	Middle C Marl
5955.00	6283.47	Lower C Chalk

WELL DETAILS: Horsetail Fed #07F-0639

+N/-S	+E/-W	Northing	Ground Level:	4925.70	Eastings	4925.70	Latitude	4925.70	Longitude	4925.70	Slot
0.00	0.00	1558346.86	3471390.84	40° 51' 12.980 N	103° 47' 45.420 W						

SECTION DETAILS

Sec	MD	Inc	Azi	TVD	+N/-S	+E/-W	Dleg	TFace	Vsect	Target
1	0.00	0.00	0.00	0.00	0.00	0.00	0.00	0.00	0.00	
2	300.00	0.00	0.00	300.00	0.00	0.00	0.00	0.00	0.00	
3	650.00	7.00	212.00	649.13	-18.11	-11.32	2.00	212.00	-17.57	
4	4850.00	7.00	212.00	4817.82	-452.18	-282.56	0.00	0.00	-438.75	
5	5200.00	0.00	0.00	5166.95	-470.29	-293.87	2.00	180.00	-456.32	
6	5467.18	0.00	0.00	5434.13	-470.29	-293.87	0.00	0.00	-456.32	
7	6285.36	90.00	359.69	5955.00	50.57	-296.69	11.00	359.69	64.13	PBHL 0639C
8	13552.20	90.00	359.69	5955.00	7317.30	-336.00	0.00	0.00	7325.01	PBHL 0639C

ANNOTATIONS

TVD	MD	Inc	Azi	+N/-S	+E/-W	Vsect	Departure	Annotation
300.00	300.00	0.00	0.00	0.00	0.00	0.00	0.00	Build 2°/100'
649.13	650.00	7.00	212.00	-18.11	-11.32	-17.57	21.35	Hold 7° Inc
4817.82	4850.00	7.00	212.00	-452.18	-282.56	-438.75	533.20	Drop 2°/100'
5166.95	5200.00	0.00	0.00	-470.29	-293.87	-456.32	554.56	Hold Vertical
5434.13	5467.18	0.00	0.00	-470.29	-293.87	-456.32	554.56	KOP, Build 11°/100'
5955.00	6285.36	90.00	359.69	50.57	-296.69	64.13	1075.43	LP @ 90° Inc, Hold
5955.00	13552.10	90.00	359.69	7317.21	-336.00	7324.92	8342.17	TD at 13552.10' MD

DESIGN TARGET DETAILS

Name	TVD	+N/-S	+E/-W	Northing	Eastings	Latitude	Longitude
PBHL 0639C	5955.00	7317.30	-336.00	1565656.35	3470914.30	40° 52' 25.280 N	103° 47' 49.794 W
Beffie #1	6735.70	3234.89	-1644.45	1561549.55	3469684.54	40° 51' 44.942 N	103° 48' 6.822 W

SHL:

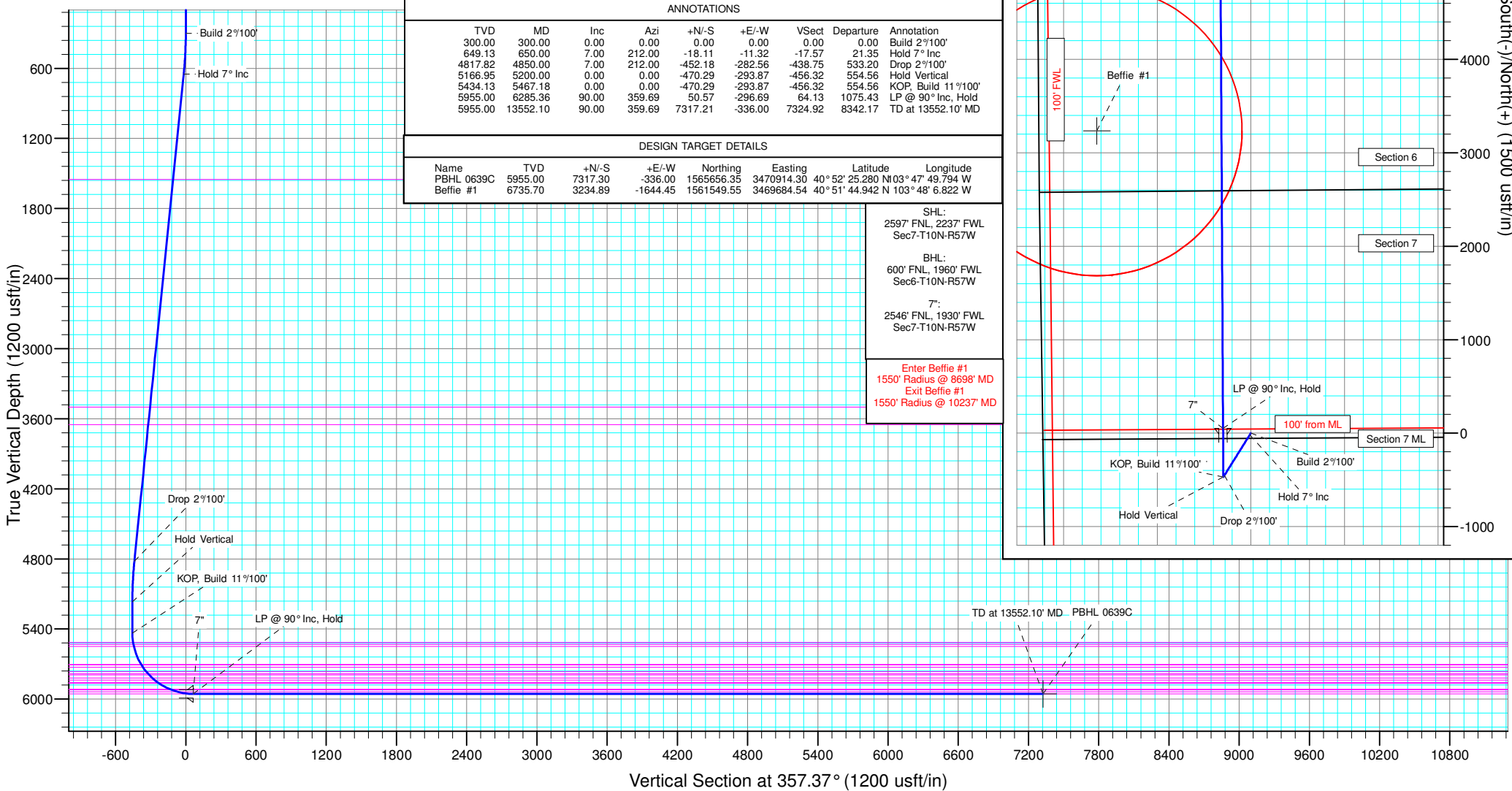
2597' FNL, 2237' FWL
Sec7-T10N-R57W

BHL:
600' FNL, 1960' FWL
Sec6-T10N-R57W

7":

2546' FNL, 1930' FWL
Sec7-T10N-R57W

Enter Beffie #1
1550' Radius @ 8698' MD
Exit Beffie #1
1550' Radius @ 10237' MD



West(-)/East(+) (1500 usft/in)

