

LEGEND:

└─ = 90° SYMBOL

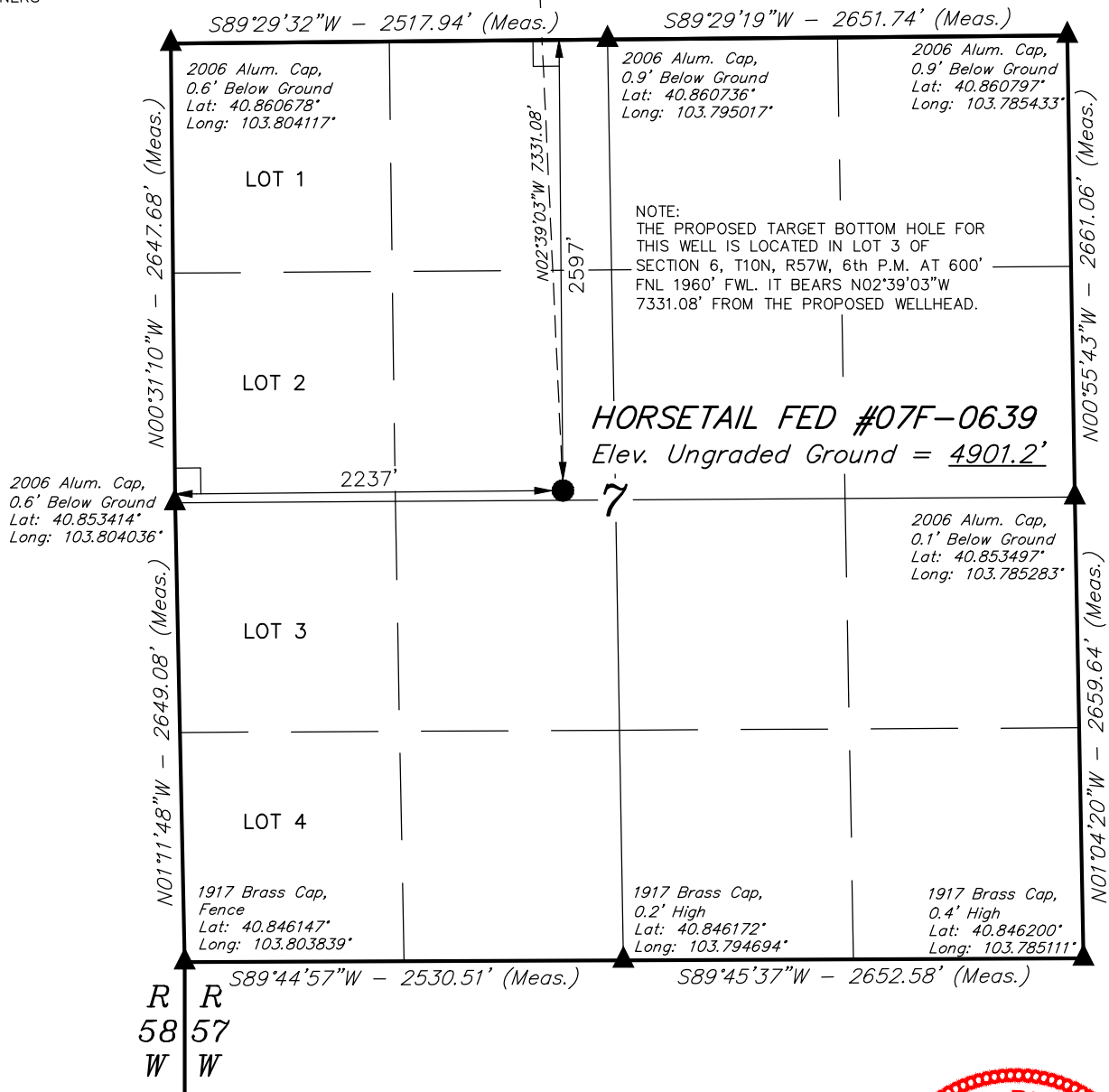
● = PROPOSED WELLHEAD.

○ = TARGET BOTTOM HOLE.

▲ = SECTION CORNERS LOCATED.

T10N, R57W, 6th P.M.

○ Target
Bottom Hole



PDOP = 1.0

NAD 83 (SURFACE LOCATION)

LATITUDE = 40°51'12.98" (40.853606)
LONGITUDE = 103°47'45.42" (103.795950)

NAD 27 (SURFACE LOCATION)

LATITUDE = 40°51'13.03" (40.853619)
LONGITUDE = 103°47'43.62" (103.795450)



BASIS OF BEARINGS
BASIS OF BEARINGS IS A G.P.S. OBSERVATION

BASIS OF ELEVATION

SPOT ELEVATION LOCATED AT THE NORTHEAST CORNER OF SECTION 15, T9N, R58W, 6th P.M. TAKEN FROM THE GATEHOOK SPRING, QUADRANGLE, COLORADO, WELD COUNTY, 7.5 MINUTE QUAD (TOPOGRAPHIC MAP) PUBLISHED BY THE UNITED STATES DEPARTMENT OF THE INTERIOR, GEOLOGICAL SURVEY. SAID ELEVATION IS MARKED AS BEING 4679 FEET.



CERTIFICATE

THIS IS TO CERTIFY THAT THE ABOVE PLAT WAS PREPARED FROM FIELD NOTES OF ACTUAL SURVEYS MADE BY ME OR UNDER MY SUPERVISION AND THAT THE SAME ARE TRUE AND CORRECT TO THE BEST OF MY KNOWLEDGE AND BELIEF.

REGISTERED LAND SURVEYOR
REGISTRATION NO. 28285
STATE OF COLORADO
8-24-15

WHITING OIL & GAS CORP.

HORSETAIL FED #07F-0639 (SURFACE LOCATION)
SE 1/4 NW 1/4, SECTION 7, T10N, R57W, 6th P.M.
WELD COUNTY, COLORADO

SURVEYED BY: GREG WEIMER, C.J.	DATE: 12-09-14
DRAWN BY: K.B.	DATE DRAWN: 11-07-14
SCALE: 1" = 1000'	REVISED: 02-24-15
WELL LOCATION PLAT	

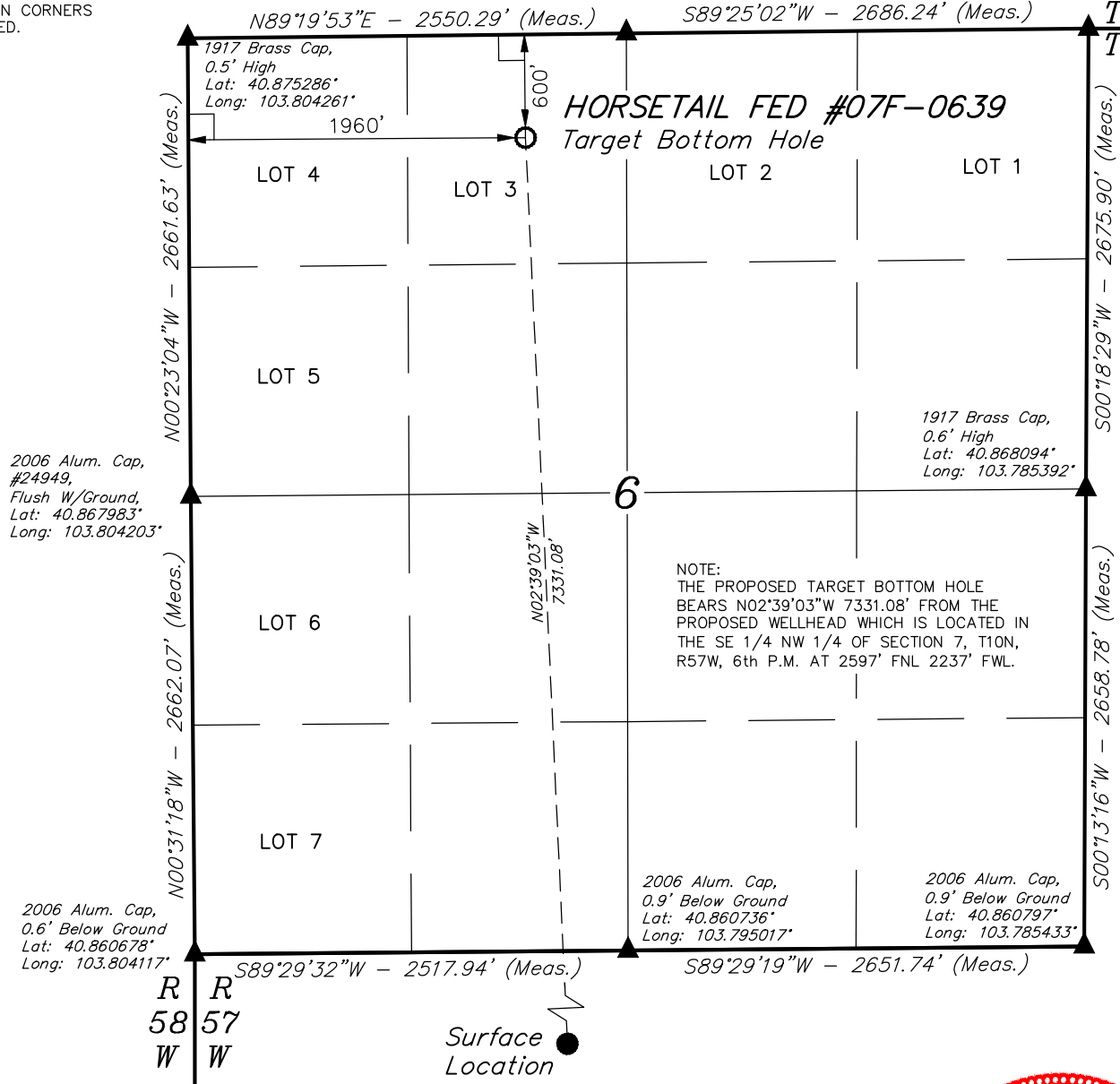
LEGEND:

- = 90° SYMBOL
- = PROPOSED WELLHEAD.
- = TARGET BOTTOM HOLE.
- = SECTION CORNERS LOCATED.

T10N, R57W, 6th P.M.

1917 Brass Cap,
0.3' High
Lat: 40.875367°
Long: 103.795042°

1917 Brass Cap,
0.4' High
Lat: 40.875436°
Long: 103.785333°



NOTE:
THE PROPOSED TARGET BOTTOM HOLE
BEARS N02°39'03"W 7331.08'
FROM THE PROPOSED WELLHEAD WHICH IS LOCATED IN
THE SE 1/4 NW 1/4 OF SECTION 7, T10N,
R57W, 6th P.M. AT 2597' FNL 2237' FWL.

2006 Alum. Cap,
0.9' Below Ground
Lat: 40.860736°
Long: 103.795017°

2006 Alum. Cap,
0.9' Below Ground
Lat: 40.860797°
Long: 103.785433°

Surface
Location

CERTIFICATE

THIS IS TO CERTIFY THAT THE ABOVE PLAT WAS PREPARED FROM FIELD
NOTES OF ACTUAL SURVEYS MADE BY ME OR UNDER MY SUPERVISION
AND THAT THE SAME ARE TRUE AND CORRECT TO THE BEST OF MY
KNOWLEDGE AND BELIEF.

REGISTERED LAND SURVEYOR
REGISTRATION NO. 28285
STATE OF COLORADO
8-24-15

NAD 83 (TARGET BOTTOM HOLE)
LATITUDE = 40°52'25.32" (40.873700)
LONGITUDE = 103°47'49.79" (103.797164)
NAD 27 (TARGET BOTTOM HOLE)
LATITUDE = 40°52'25.38" (40.873717)
LONGITUDE = 103°47'47.98" (103.796661)



BASIS OF BEARINGS

BASIS OF BEARINGS IS A G.P.S. OBSERVATION

BASIS OF ELEVATION

SPOT ELEVATION LOCATED AT THE NORTHEAST CORNER OF SECTION 15, T9N, R58W,
6th P.M. TAKEN FROM THE GATEHOOK SPRING, QUADRANGLE, COLORADO, WELD
COUNTY, 7.5 MINUTE QUAD (TOPOGRAPHIC MAP) PUBLISHED BY THE UNITED STATES
DEPARTMENT OF THE INTERIOR, GEOLOGICAL SURVEY. SAID ELEVATION IS MARKED
AS BEING 4679 FEET.



WHITING OIL & GAS CORP.

HORSETAIL FED #07F-0639 (TARGET BOTTOM HOLE)
LOT 3, SECTION 6, T10N, R57W, 6th P.M.
WELD COUNTY, COLORADO

SURVEYED BY: GREG WEIMER, C.J.	DATE: 12-09-14
DRAWN BY: K.B.	DATE DRAWN: 11-07-14
SCALE: 1" = 1000'	REVISED: 02-24-15

WELL LOCATION PLAT



UELS, LLC
Corporate Office * 85 South 200 East
Vernal, UT 84078 * (435) 789-1017