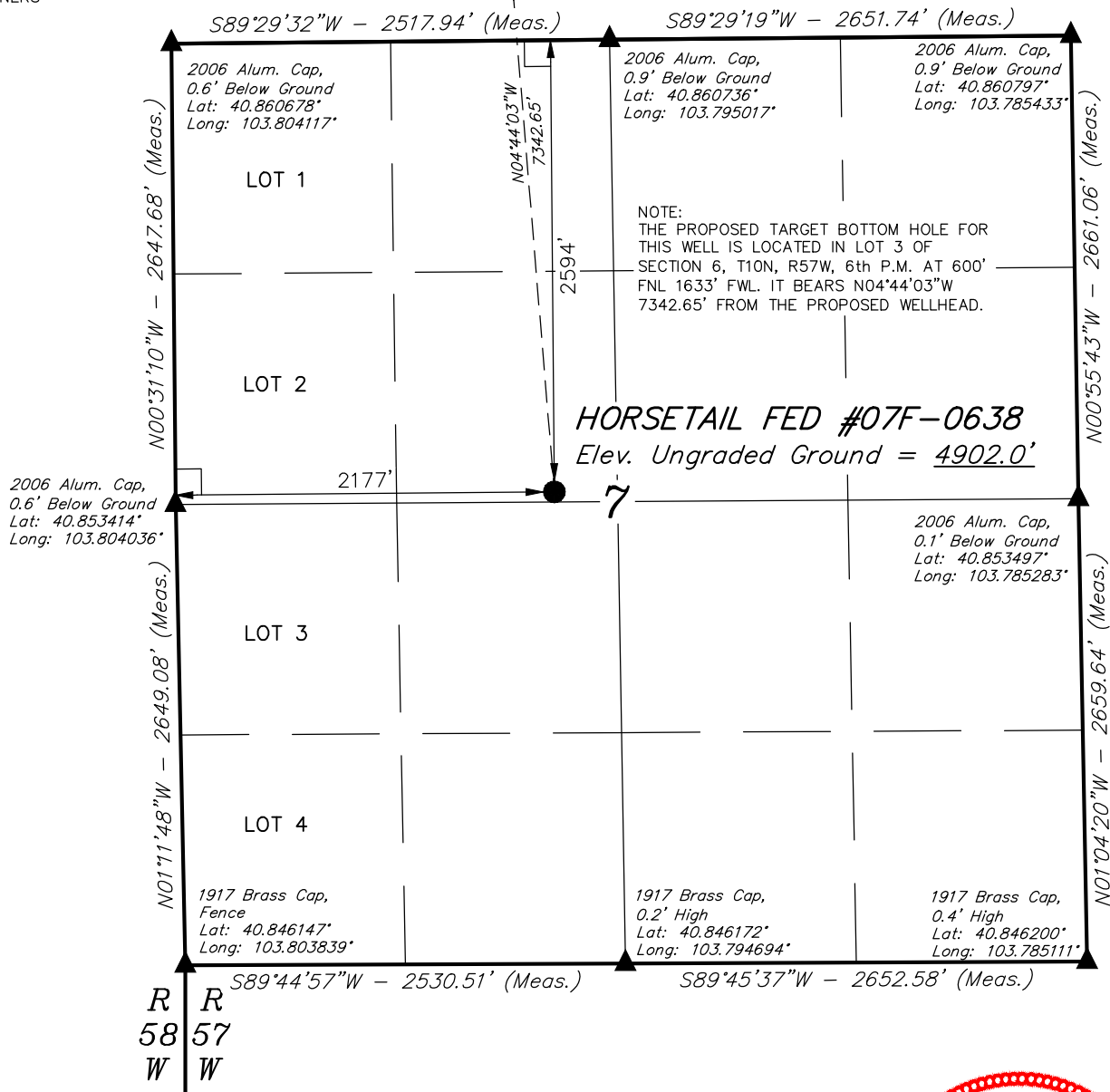


LEGEND:

- └─┘ = 90° SYMBOL
- = PROPOSED WELLHEAD.
- = TARGET BOTTOM HOLE.
- ▲ = SECTION CORNERS LOCATED.

T10N, R57W, 6th P.M.

Target
Bottom Hole



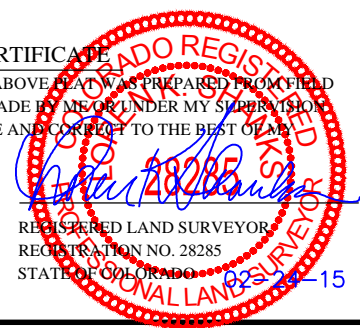
NOTE:
THE PROPOSED TARGET BOTTOM HOLE FOR THIS WELL IS LOCATED IN LOT 3 OF SECTION 6, T10N, R57W, 6th P.M. AT 600' FNL 1633' FWL. IT BEARS N04°44'03"W 7342.65' FROM THE PROPOSED WELLHEAD.

PDOP = 2.5

NAD 83 (SURFACE LOCATION)	
LATITUDE = 40°51'13.00" (40.853611)	
LONGITUDE = 103°47'46.21" (103.796169)	
NAD 27 (SURFACE LOCATION)	
LATITUDE = 40°51'13.05" (40.853625)	
LONGITUDE = 103°47'44.40" (103.795667)	



CERTIFICATE
THIS IS TO CERTIFY THAT THE ABOVE PLAT WAS PREPARED FROM FIELD NOTES OF ACTUAL SURVEYS MADE BY ME OR UNDER MY SUPERVISION AND THAT THE SAME ARE TRUE AND CORRECT TO THE BEST OF MY KNOWLEDGE AND BELIEF.



BASIS OF BEARINGS
BASIS OF BEARINGS IS A G.P.S. OBSERVATION
BASIS OF ELEVATION

SPOT ELEVATION LOCATED AT THE NORTHEAST CORNER OF SECTION 15, T9N, R58W, 6th P.M. TAKEN FROM THE GATEHOOK SPRING, QUADRANGLE, COLORADO, WELD COUNTY, 7.5 MINUTE QUAD (TOPOGRAPHIC MAP) PUBLISHED BY THE UNITED STATES DEPARTMENT OF THE INTERIOR, GEOLOGICAL SURVEY. SAID ELEVATION IS MARKED AS BEING 4679 FEET.

WHITING OIL & GAS CORP.

HORSETAIL FED #07F-0638 (SURFACE LOCATION)
SE 1/4 NW 1/4, SECTION 7, T10N, R57W, 6th P.M.
WELD COUNTY, COLORADO

SURVEYED BY: GREG WEIMER, C.J.	DATE: 12-09-14
DRAWN BY: K.B.	DATE DRAWN: 11-07-14
SCALE: 1" = 1000'	REVISED: 02-24-15
WELL LOCATION PLAT	



UELS, LLC
Corporate Office * 85 South 200 East
Vernal, UT 84078 * (435) 789-1017

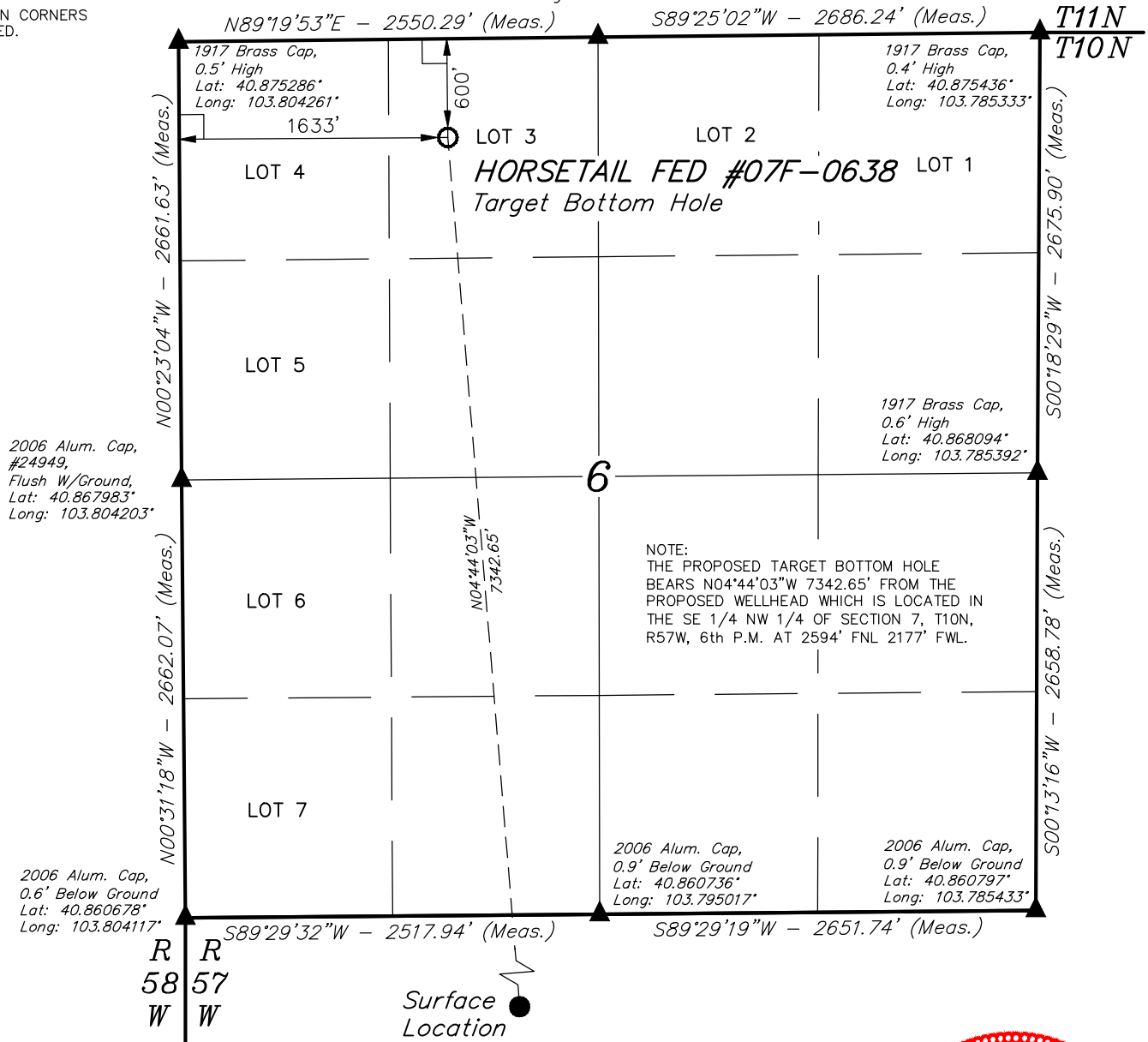


LEGEND:

- └─┘ = 90° SYMBOL
- = PROPOSED WELLHEAD.
- = TARGET BOTTOM HOLE.
- ▲ = SECTION CORNERS LOCATED.

T10N, R57W, 6th P.M.

1917 Brass Cap,
0.3' High
Lat: 40.875367°
Long: 103.795042°



CERTIFICATE
THIS IS TO CERTIFY THAT THE ABOVE PLAT WAS PREPARED FROM FIELD NOTES OF ACTUAL SURVEYS MADE BY ME OR UNDER MY SUPERVISION AND THAT THE SAME ARE TRUE AND CORRECT TO THE BEST OF MY KNOWLEDGE AND BELIEF.

Greg Weimer
28285
REGISTERED LAND SURVEYOR
REGISTRATION NO. 28285
STATE OF COLORADO

NAD 83 (TARGET BOTTOM HOLE)
LATITUDE = 40°52'25.29" (40.873692)
LONGITUDE = 103°47'54.04" (103.798344)
NAD 27 (TARGET BOTTOM HOLE)
LATITUDE = 40°52'25.34" (40.873706)
LONGITUDE = 103°47'52.24" (103.797844)



BASIS OF BEARINGS
BASIS OF BEARINGS IS A G.P.S. OBSERVATION

BASIS OF ELEVATION

SPOT ELEVATION LOCATED AT THE NORTHEAST CORNER OF SECTION 15, T9N, R58W, 6th P.M. TAKEN FROM THE GATEHOOK SPRING, QUADRANGLE, COLORADO, WELD COUNTY, 7.5 MINUTE QUAD (TOPOGRAPHIC MAP) PUBLISHED BY THE UNITED STATES DEPARTMENT OF THE INTERIOR, GEOLOGICAL SURVEY. SAID ELEVATION IS MARKED AS BEING 4679 FEET.

WHITING OIL & GAS CORP.

**HORSETAIL FED #07F-0638 (TARGET BOTTOM HOLE)
LOT 3, SECTION 6, T10N, R57W, 6th P.M.
WELD COUNTY, COLORADO**

SURVEYED BY: GREG WEIMER, C.J.	DATE: 12-09-14
DRAWN BY: K.B.	DATE DRAWN: 11-07-14
SCALE: 1" = 1000'	REVISED: 02-24-15



UELS, LLC
Corporate Office * 85 South 200 East
Vernal, UT 84078 * (435) 789-1017



WELL LOCATION PLAT