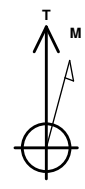




Project: Weld County, CO
Site: Sec 7-T10N-R57W
Well: Horsetail #07F-0607
Wellbore: Hz
Design: Design #1

PROJECT DETAILS: Weld County, CO
 Geodetic System: US State Plane 1983
 Datum: North American Datum 1983
 Ellipsoid: GRS 1980
 Zone: Colorado Northern Zone
 System Datum: Mean Sea Level



Azimuths to True North
 Magnetic North: 7.88°
 Magnetic Field
 Strength: 53087.4nT
 Dip Angle: 67.44°
 Date: 1/5/2015
 Model: IGRF2010

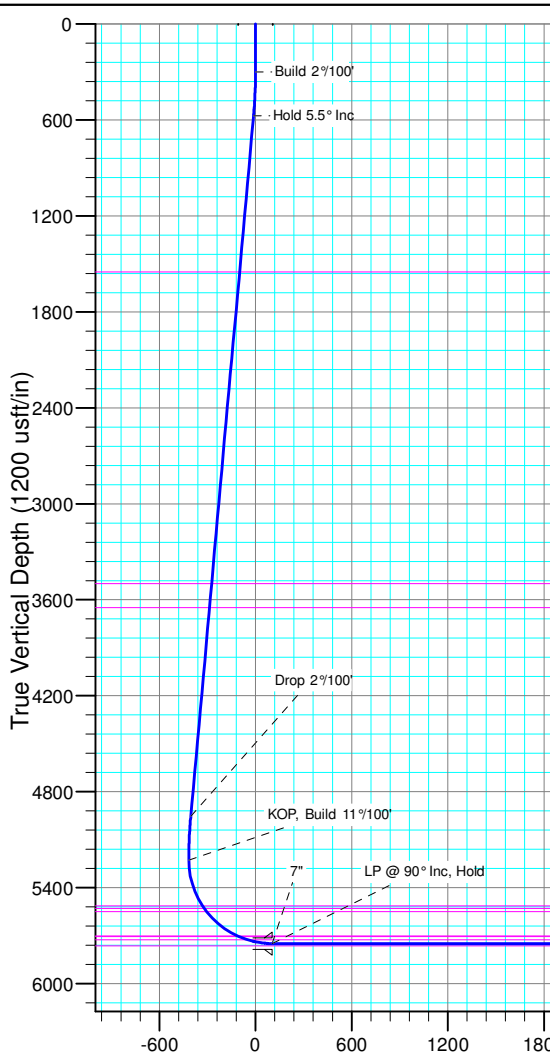
WELL DETAILS: Horsetail #07F-0607

+N/-S	+E/-W	Northing	Ground Level:	4925.70
0.00	0.00	1558346.43	Easting	3471420.82
			Latitude	40° 51' 12.970 N
			Longitude	103° 47' 45.030 W
			Slot	

SECTION DETAILS										
Sec	MD	Inc	Azi	TVD	+N/-S	+E/-W	Dleg	TFace	VSect	Target
1	0.00	0.00	0.00	0.00	0.00	0.00	0.00	0.00	0.00	
2	300.00	0.00	0.00	300.00	0.00	0.00	0.00	0.00	0.00	
3	575.00	5.50	200.00	574.58	-12.39	-4.51	2.00	200.00	-12.25	
4	4975.23	5.50	200.00	4954.55	-408.70	-148.76	0.00	0.00	-403.92	
5	5250.23	0.00	0.00	5229.13	-421.10	-153.27	2.00	180.00	-416.17	
6	6068.41	90.00	359.59	5750.00	99.76	-156.97	11.00	359.59	104.55	PBHL 0607A
7	12546.82	90.00	359.59	5750.00	6578.00	-203.00	0.00	0.00	6581.14	PBHL 0607A

FORMATION TOP DETAILS

TVDPATH	MDPATH	FORMATION
1550.00	1554.93	Upper Pierre
3500.00	3513.95	Hygiene
3650.00	3664.65	Lower Pierre
5515.00	5552.84	P200 Marker
5530.00	5571.00	P300 Marker
5550.00	5595.93	P350 Marker
5702.00	5843.05	Sharon Springs
5707.00	5855.29	Niobrara
5727.00	5913.06	Top A Chalk



ANNOTATIONS										
TVD	MD	Inc	Azi	+N/-S	+E/-W	VSect	Departure	Annotation		
300.00	300.00	0.00	0.00	0.00	0.00	0.00	0.00	Build 2°/100'		
574.58	575.00	5.50	200.00	-12.39	-4.51	-12.25	13.19	Hold 5.5° Inc		
4954.55	4975.23	5.50	200.00	-408.70	-148.76	-403.92	434.93	Drop 2°/100'		
5229.13	5250.23	0.00	0.00	-421.10	-153.27	-416.17	448.12	KOP, Build 11°/100'		
5750.00	6068.41	90.00	359.59	99.76	-156.97	104.55	968.99	LP @ 90° Inc, Hold		
5750.00	12546.81	90.00	359.59	6578.00	-203.00	6581.13	7447.39	TD at 12546.81' TD		

DESIGN TARGET DETAILS							
Name	TVD	+N/-S	+E/-W	Northing	Easting	Latitude	Longitude
PBHL 0607A	5750.00	6578.00	-203.00	1564919.32	3471091.45	40° 52' 17.965 N 103° 47' 47.672 W	
Beffie #1	6735.70	3235.90	-1674.41	1561549.55	3469684.54	40° 51' 44.942 N 103° 48' 6.822 W	

SHL:
2598' FNL, 2267' FWL
Sec7-T10N-R57W

BHL:
1336' FNL, 2123' FWL
Sec6-T10N-R57W

7":
2497' FNL, 2106' FWL
Sec7-T10N-R57W

Enter Beffie #1
1550' Radius @ 8846' MD
Exit Beffie #1
1550' Radius @ 9559' MD

