



Project: Weld County, CO
Site: Sec 7-T10N-R57W
Well: Horsetail Fed #07F-0605
Wellbore: Hz
Design: Design #1

PROJECT DETAILS: Weld County, CO

Geodetic System: US State Plane 1983
Datum: North American Datum 1983
Ellipsoid: GRS 1980
Zone: Colorado Northern Zone
System Datum: Mean Sea Level



Azimuths to True North
Magnetic North: 7.88°
Magnetic Field
Strength: 53087.4nT
Dip Angle: 67.44°
Date: 1/5/2015
Model: IGRF2010

WELL DETAILS: Horsetail Fed #07F-0605

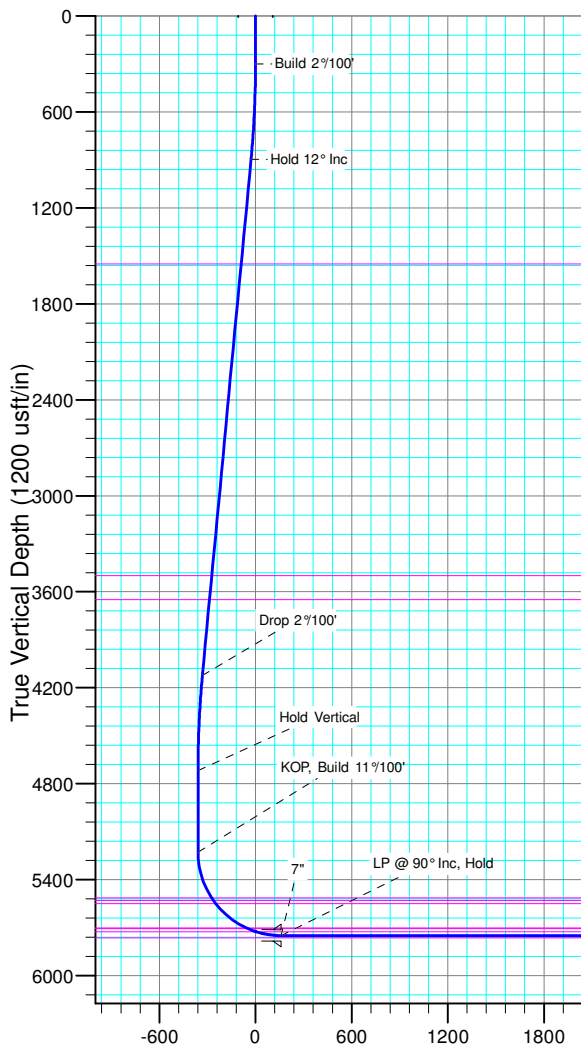
+N/-S	+E/-W	Northing	Ground Level:	4925.70	Eastings	Latitude	Longitude	Slot
0.00	0.00	1558346.15	3471300.86	40° 51' 12.990 N	103° 47' 46.591 W			

SECTION DETAILS

Sec	MD	Inc	Azi	TVD	+N/-S	+E/-W	Dleg	TFace	VSec	Target
1	0.00	0.00	0.00	0.00	0.00	0.00	0.00	0.00	0.00	
2	300.00	0.00	0.00	300.00	0.00	0.00	0.00	0.00	0.00	
3	900.00	12.00	238.00	895.62	-33.17	-53.09	2.00	238.00	-27.69	
4	4200.00	12.00	238.00	4123.51	-396.76	-634.94	0.00	0.00	-331.20	
5	4800.00	0.00	0.00	4719.13	-429.93	-688.03	2.00	180.00	-358.89	
6	5310.00	0.00	0.00	5229.13	-429.93	-688.03	0.00	0.00	-358.89	
7	6128.18	90.00	359.65	5750.00	90.93	-691.26	11.00	359.65	159.67	PBHL 0605A
8	13352.66	90.00	359.65	5750.00	7315.27	-736.00	0.00	0.00	7352.21	PBHL 0605A

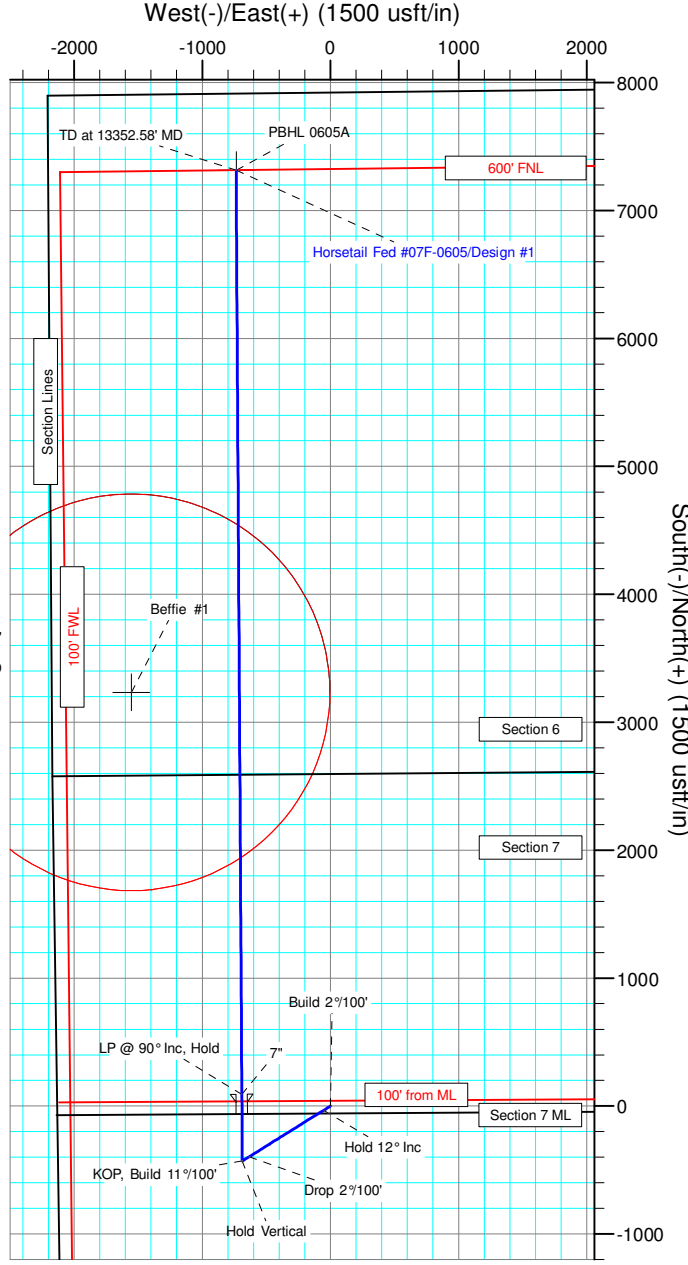
FORMATION TOP DETAILS

TVDPath	MDPath	Formation
1550.00	1569.00	Upper Pierre
3500.00	3562.56	Hygiene
3650.00	3715.91	Lower Pierre
5515.00	5612.60	P200 Marker
5530.00	5630.76	P300 Marker
5550.00	5655.69	P350 Marker
5702.00	5902.80	Sharon Springs
5707.00	5915.04	Niobrara
5727.00	5972.80	Top A Chalk



ANNOTATIONS								
TVD	MD	Inc	Azi	+N/-S	+E/-W	VSect	Departure	Annotation
300.00	300.00	0.00	0.00	0.00	0.00	0.00	0.00	Build 2°/100'
895.62	900.00	12.00	238.00	-33.17	-53.09	-27.69	62.60	Hold 12°/100'
4123.51	4200.00	12.00	238.00	-396.76	-634.94	-331.20	748.71	Drop 2°/100'
4719.13	4800.00	0.00	0.00	-429.93	-688.03	-358.89	811.31	Hold Vertical
5229.13	5310.00	0.00	0.00	-429.93	-688.03	-358.89	811.31	KOP, Build 11°/100'
5750.00	6128.18	90.00	359.65	90.93	-691.26	159.67	1332.18	LP @ 90°/Inc, Hold
5750.00	13352.58	90.00	359.65	7315.19	-736.00	7352.12	8556.58	TD at 13352.58' MD
DESIGN TARGET DETAILS								
Name	TVD	+N/-S	+E/-W	Northing	Eastings	Latitude	Longitude	
PBHL 0605A	5750.00	7315.27	-736.00	1565645.94	3470424.46	40° 52' 25.270 N	103° 47' 56.171 W	
Beflie #1	6735.70	3233.86	-1554.49	1561549.55	3469684.54	40° 51' 44.942 N	103° 48' 6.822 W	

SHL:
2593' FNL, 2147' FWL
Sec7-T10N-R57W
BHL:
600' FNL, 1469' FWL
Sec6-T10N-R57W
7":
2478' FNL, 1445' FWL
Sec7-T10N-R57W
Enter Befie #1
1550' Radius @ 7973' MD
Exit Befie #1
1550' Radius @ 10564' MD



TD at 13352.58' MD PBHL 0605A