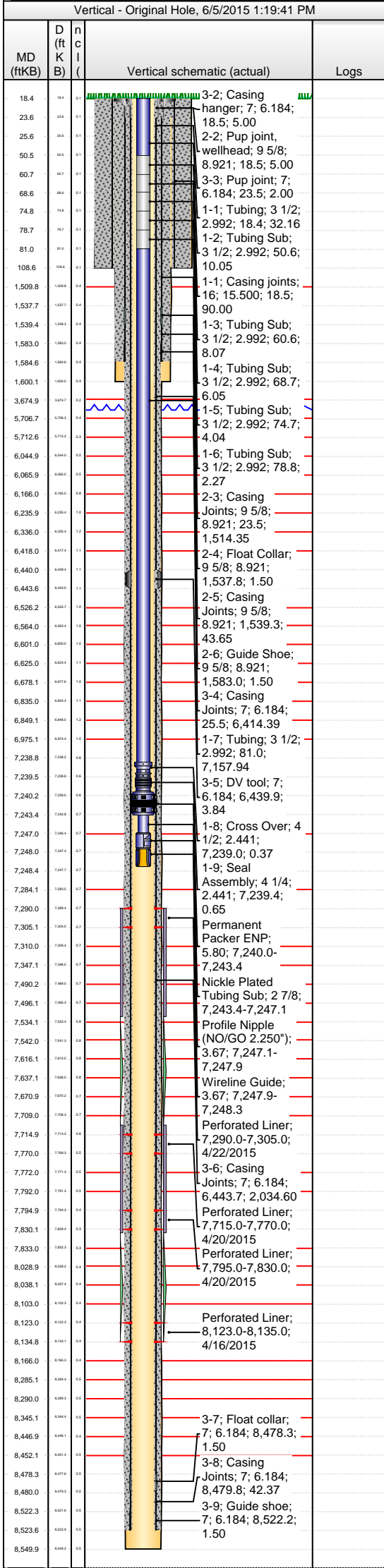




Lease Review All - Frac Summary

Well Name: RAZOR 21 SWD 1

API Number 051234077700			WPC ID 1CO0761136			Well Permit Number			Field Name Wildcat			County Weld			State CO	
Well Configuration Type Vertical				Orig KB Elv (ft) 4,838.50		Ground Elevation (ft) 4,820.00		Casing Flange Elevation (ft)		Tubing Head Elevation (ft)		Total Depth (ft)(KB) 8,550.0				
Original Spud Date 2/4/2015		Completion Date		Asset Group Redtail			Responsible Engineer			N/S Dist (ft) 2,595.0		N/S Ref FSL	E/W Dist (ft) 2,317.0		E/W Ref FEL	
Lot		Quarter 1 NW	Quarter 2 SE	Quarter 3	Quarter 4	Section 21	Section Suffix	Section Type	Township 10	Township N/S Dir N	Range 58	Range E/W Dir W	Meridian			



Wellbore Sections						
Wellbore Name			Start Date	Size (in)	Act Top (ftKB)	Act Btm (ftKB)
Original Hole			1/30/2015	24	18.5	108.5
Original Hole			2/4/2015	13 1/2	108.5	1,600.0
Original Hole			2/5/2015	8 3/4	1,600.0	8,550.0
Conductor Pipe, 108.5ftKB						
OD (in)	Wt (lb/ft)	Grade	Top (ftKB)	Btm (ftKB)	Len (ft)	Item Des
16	42.09	J-55	18.5	108.5	90.00	Casing joints
Surface Csg, 1,584.5ftKB						
OD (in)	Wt (lb/ft)	Grade	Top (ftKB)	Btm (ftKB)	Len (ft)	Item Des
9 5/8	36.00	J-55	18.5	18.5	0.00	Landing joint
9 5/8	36.00	J-55	18.5	23.5	5.00	Pup joint, wellhead
9 5/8	36.00	J-55	23.5	1,537.9	1,514.35	Casing Joints
9 5/8	36.00	J-55	1,537.9	1,539.4	1.50	Float Collar
9 5/8	36.00	J-55	1,539.4	1,583.0	43.65	Casing Joints
9 5/8	36.00	J-55	1,583.0	1,584.5	1.50	Guide Shoe
Production Csg, 8,523.7ftKB						
OD (in)	Wt (lb/ft)	Grade	Top (ftKB)	Btm (ftKB)	Len (ft)	Item Des
7	29.00	P-110	18.5	18.5	0.00	Landing joint
7	29.00	P-110	18.5	23.5	5.00	Casing hanger
7	29.00	P-110	23.5	25.5	2.00	Pup joint
7	29.00	P-110	25.5	6,439.9	6,414.39	Casing Joints
7	29.00	P-110	6,439.9	6,443.7	3.84	DV tool
7	29.00	P-110	6,443.7	8,478.3	2,034.60	Casing Joints
7	29.00	P-110	8,478.3	8,479.8	1.50	Float collar
7	29.00	P-110	8,479.8	8,522.2	42.37	Casing Joints
7	29.00	P-110	8,522.2	8,523.7	1.50	Guide shoe
Cement Stages						
Des		Pump Start Date	Drill Out Date	Top (ftKB)	Btm (ftKB)	Top Meas Meth
Conductor Cement		1/30/2015		18.5	108.5	Returns to Surface
Surface Casing Cement		2/5/2015		18.5	1,584.5	Returns to Surface
Production Casing Cement		2/12/2015		18.5	6,439.8	Returns to Surface
Production Casing Cement		2/12/2015		6,439.8	8,523.7	Volume Calculations
Perforations						
Type of Hole		Date	Top (ftKB)	Btm (ftKB)	Zone	
Perforated Liner		4/22/2015	7,290.0	7,305.0	ENTRADA, Original Hole	
Perforated Liner		4/20/2015	7,715.0	7,770.0	LYONS, Original Hole	
Perforated Liner		4/20/2015	7,795.0	7,830.0	LOWER LYONS, Original Hole	
Perforated Liner		4/16/2015	8,123.0	8,135.0	AMAZON, Original Hole	
Stimulations & Treatments						
Acidizing on 4/30/2015 07:31						
Comment						
Total Clean Volu...	Vol Slurry Tot (bbl)	Proppant Desig...	Proppant Frm (lb)	P Max (psi)	Avg Treat...	Avg Treat... Max Tre... Frac Gr...
150.00						5.00
Total Add Amount						
Stim/Treat Fluids						
Fluid Name						
15% Acid						
Stim/Treat Stages						
Acidization <Stage Number?>						
Stg #	Start Date	Top (ftKB)	Btm (ftKB)	Vol Clean...	Vol Slurry...	Comment
	4/30/2015	7,290.0	8,135.0	150.00		
Stim/Treat Additives						
Stg #	Add	Type	Amount	Units	Sand Size	
Tubing set at 7,240.0ftKB on 5/5/2015 06:00						
Set Depth (ftKB)		Comment			Run Date	Pull Date
7,240.0					5/5/2015	
Item Des			OD (in)	ID (in)	Len (ft)	Top (ftKB) Btm (ftKB)
Tubing			3 1/2	2.992	32.16	18.4 50.6
Tubing Sub			3 1/2	2.992	10.05	50.6 60.6
Tubing Sub			3 1/2	2.992	8.07	60.6 68.7
Tubing Sub			3 1/2	2.992	6.05	68.7 74.7
Tubing Sub			3 1/2	2.992	4.04	74.7 78.8
Tubing Sub			3 1/2	2.992	2.27	78.8 81.0
Tubing			3 1/2	2.992	7,157.94	81.0 7,239.0
Cross Over			4 1/2	2.441	0.37	7,239.0 7,239.4
Seal Assembly			4 1/4	2.441	0.65	7,239.4 7,240.0
Rod Strings						
<des> on <dtmrun>						
Rod Description				Run Date	Pull Date	



Lease Review All - Frac Summary

Well Name: RAZOR 21 SWD 1

API Number 051234077700			WPC ID 1CO0761136			Well Permit Number			Field Name Wildcat			County Weld			State CO	
Well Configuration Type Vertical				Orig KB Elv (ft) 4,838.50		Ground Elevation (ft) 4,820.00		Casing Flange Elevation (ft)		Tubing Head Elevation (ft)		Total Depth (ftKB) 8,550.0				
Original Spud Date 2/4/2015		Completion Date		Asset Group Redtail			Responsible Engineer			N/S Dist (ft) 2,595.0		N/S Ref FSL	E/W Dist (ft) 2,317.0		E/W Ref FEL	
Lot	Quarter 1 NW	Quarter 2 SE	Quarter 3	Quarter 4	Section 21	Section Suffix	Section Type	Township 10	Township N/S Dir N	Range 58	Range E/W Dir W	Meridian				

Vertical - Original Hole, 6/5/2015 1:19:42 PM				Item Des		OD (in)	Len (ft)	Top (ftKB)	Btm (ftKB)
MD (ftKB)	D (ft K B)	n c l (Vertical schematic (actual)					
18.4	18.4	5.1							
23.6	23.6	5.1							
25.6	25.6	5.1							
50.5	50.5	5.1							
60.7	60.7	5.1							
68.6	68.6	5.1							
74.8	74.8	5.1							
78.7	78.7	5.1							
81.0	81.0	5.1							
108.6	108.6	5.1							
1,509.8	1,509.8	5.4		3-2; Casing hanger; 7; 6.184; 18.5; 5.00					
1,537.7	1,537.7	5.4		2-2; Pup joint, wellhead; 9 5/8; 8.921; 18.5; 5.00					
1,539.4	1,539.4	5.4		3-3; Pup joint; 7; 6.184; 23.5; 2.00					
1,583.0	1,583.0	5.4		1-1; Tubing; 3 1/2; 2.992; 18.4; 32.16					
1,584.6	1,584.6	5.4		1-2; Tubing Sub; 3 1/2; 2.992; 50.6; 10.05					
1,600.1	1,600.1	5.4		1-1; Casing joints; 16; 15.500; 18.5; 90.00					
3,674.9	3,674.9	5.2		1-3; Tubing Sub; 3 1/2; 2.992; 60.6; 8.07					
5,706.7	5,706.7	5.4		1-4; Tubing Sub; 3 1/2; 2.992; 68.7; 6.05					
5,712.6	5,712.6	5.3		1-5; Tubing Sub; 3 1/2; 2.992; 74.7; 4.04					
6,044.9	6,044.9	5.5		1-6; Tubing Sub; 3 1/2; 2.992; 78.8; 2.27					
6,065.9	6,065.9	5.5		2-3; Casing Joints; 9 5/8; 8.921; 23.5; 1,514.35					
6,166.0	6,166.0	5.8		2-4; Float Collar; 9 5/8; 8.921; 1,537.8; 1.50					
6,235.9	6,235.9	1.0		2-5; Casing Joints; 9 5/8; 8.921; 1,539.3; 43.65					
6,336.0	6,336.0	1.2		2-6; Guide Shoe; 9 5/8; 8.921; 1,583.0; 1.50					
6,418.0	6,418.0	1.1		3-4; Casing Joints; 7; 6.184; 25.5; 6,414.39					
6,440.0	6,440.0	1.1		1-7; Tubing; 3 1/2; 2.992; 81.0; 7,157.94					
6,443.6	6,443.6	1.1		3-5; DV tool; 7; 6.184; 6,439.9; 3.84					
6,526.2	6,526.2	1.0		1-8; Cross Over; 4 1/2; 2.441; 7,239.0; 0.37					
6,564.0	6,564.0	1.0		1-9; Seal Assembly; 4 1/4; 2.441; 7,239.4; 0.65					
6,601.0	6,601.0	1.0		Permanent Packer ENP; 5.80; 7,240.0-7,243.4					
6,625.0	6,625.0	1.1		Nickle Plated Tubing Sub; 2 7/8; 7,243.4-7,247.1					
6,678.1	6,678.1	1.0		Profile Nipple (NO/GO 2.250"); 3.67; 7,247.1-7,247.9					
6,835.0	6,835.0	1.1		Wireline Guide; 3.67; 7,247.9-7,248.3					
6,849.1	6,849.1	1.2		Perforated Liner; 7,290.0-7,305.0; 4/22/2015					
6,975.1	6,975.1	1.0		3-6; Casing Joints; 7; 6.184; 6,443.7; 2,034.60					
7,238.8	7,238.8	0.6		Perforated Liner; 7,715.0-7,770.0; 4/20/2015					
7,239.5	7,239.5	0.6		Perforated Liner; 7,795.0-7,830.0; 4/20/2015					
7,240.2	7,240.2	0.6		Perforated Liner; 8,123.0-8,135.0; 4/16/2015					
7,243.4	7,243.4	0.7		3-7; Float collar; 7; 6.184; 8,478.3; 1.50					
7,247.0	7,247.0	0.7		3-8; Casing Joints; 7; 6.184; 8,479.8; 42.37					
7,248.0	7,248.0	0.7		3-9; Guide shoe; 7; 6.184; 8,522.2; 1.50					
7,248.4	7,248.4	0.7							
7,284.1	7,284.1	0.7							
7,290.0	7,290.0	0.7							
7,305.1	7,305.1	0.7							
7,310.0	7,310.0	0.7							
7,347.1	7,347.1	0.7							
7,490.2	7,490.2	0.7							
7,496.1	7,496.1	0.7							
7,534.1	7,534.1	0.8							
7,542.0	7,542.0	0.8							
7,616.1	7,616.1	0.8							
7,637.1	7,637.1	0.8							
7,670.9	7,670.9	0.7							
7,709.0	7,709.0	0.7							
7,714.9	7,714.9	0.8							
7,770.0	7,770.0	0.6							
7,772.0	7,772.0	0.6							
7,792.0	7,792.0	0.6							
7,794.9	7,794.9	0.4							
7,830.1	7,830.1	0.3							
7,833.0	7,833.0	0.3							
8,028.9	8,028.9	0.4							
8,038.1	8,038.1	0.4							
8,103.0	8,103.0	0.4							
8,123.0	8,123.0	0.4							
8,134.8	8,134.8	0.4							
8,166.0	8,166.0	0.4							
8,285.1	8,285.1	0.4							
8,290.0	8,290.0	0.5							
8,345.1	8,345.1	0.5							
8,446.9	8,446.9	0.4							
8,452.1	8,452.1	0.5							
8,478.3	8,478.3	0.5							
8,480.0	8,480.0	0.5							
8,522.3	8,522.3	0.5							
8,523.6	8,523.6	0.5							
8,549.9	8,549.9	0.5							

Item Des		OD (in)	Len (ft)	Top (ftKB)	Btm (ftKB)
Other Strings					
Set Depth (ftKB)		Comment		Run Date	Pull Date
Item Des		OD (in)	Len (ft)	Top (ftKB)	Btm (ftKB)
Other In Hole					
Des	OD (in)	Run Date	Pull Date	Top (ftKB)	Btm (ftKB)
Permanent Packer ENP	5.8	5/5/2015		7,240.0	7,243.4
Nickle Plated Tubing Sub	2 7/8	5/5/2015		7,243.4	7,247.1
Profile Nipple (NO/GO 2.250")	3.668	5/5/2015		7,247.1	7,247.9
Wireline Guide	3.668	5/5/2015		7,247.9	7,248.3
Bottom Hole Cores					
Date	Core #	Top (ftKB)	Btm (ftKB)	Recov (ft)	