

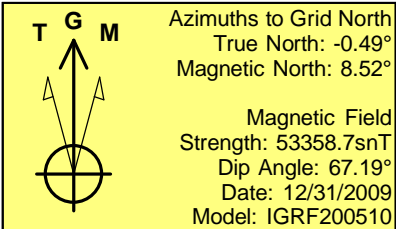
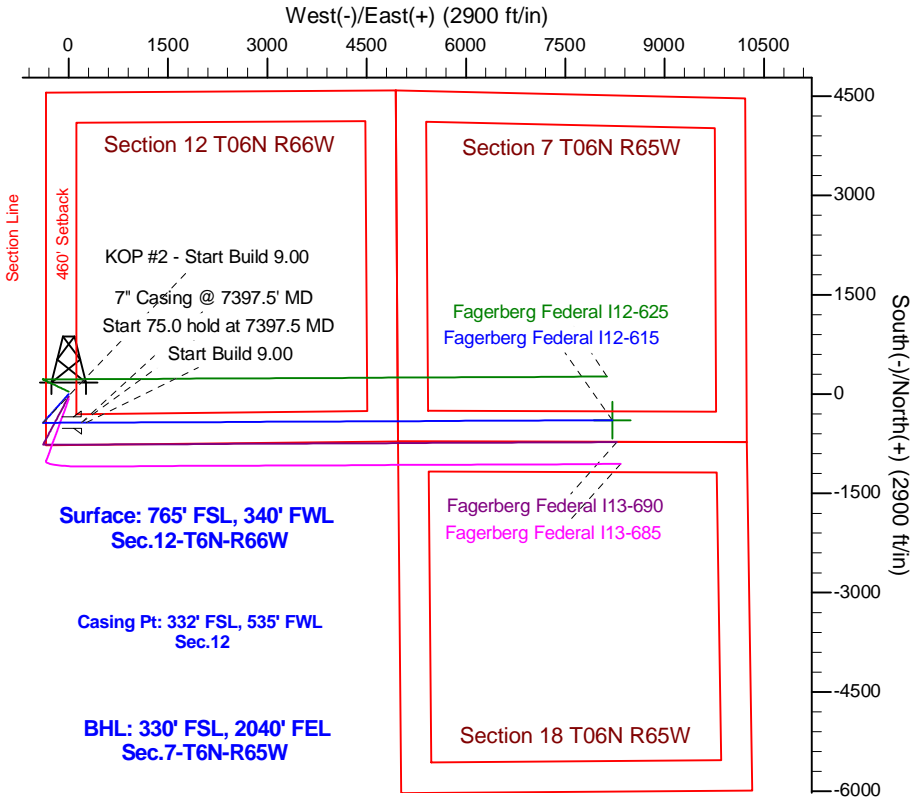
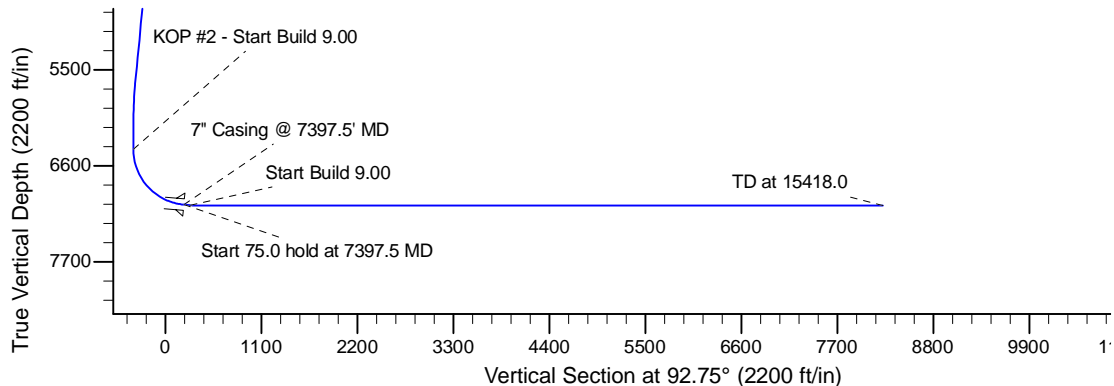
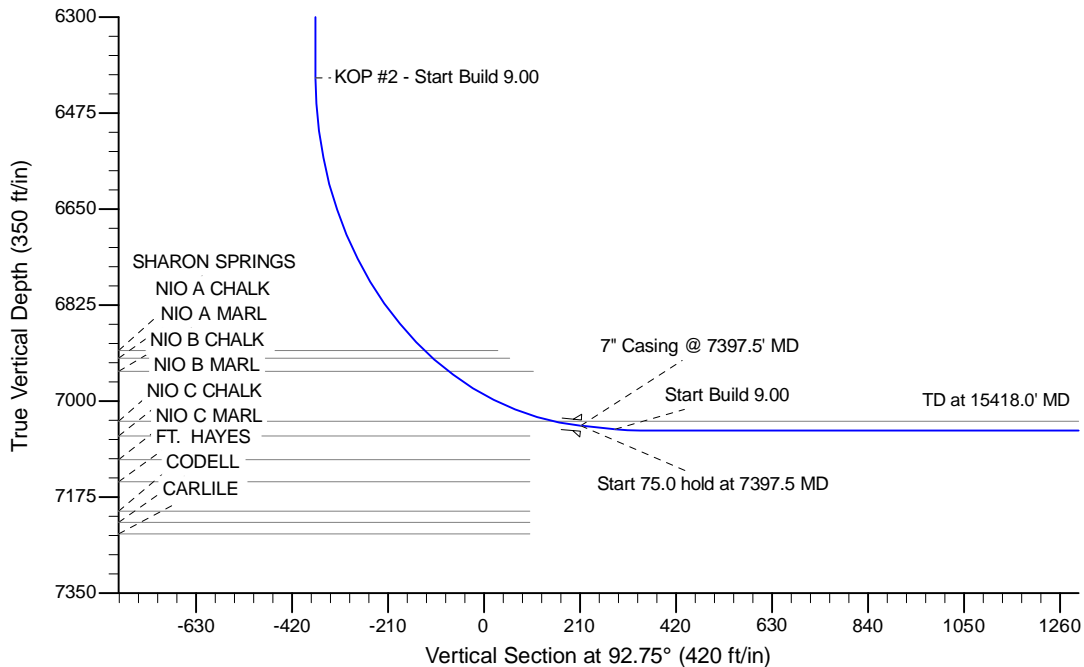
Project: Wattenberg Field  
Site: 1 (Section 12-T06N-R66W) Weld County, CO  
Well: Fagerberg Federal I12-615  
Wellbore: Original Drilling  
Design: APD - Rev 0

# Northern Region Drilling - Working

Geodetic System: US State Plane 1983  
Datum: North American Datum 1983  
Ellipsoid: GRS 1980  
Zone: Colorado Northern Zone  
System Datum: Mean Sea Level

## SECTION DETAILS

Sec	MD	Inc	Azi	TVD	+N/-S	+E/-W	Dleg	TFace	VSect	Target
1	0.0	0.00	0.00	0.0	0.0	0.0	0.00	0.00	0.0	
2	1800.0	0.00	0.00	1800.0	0.0	0.0	0.00	0.00	0.0	
3	2229.2	8.58	221.88	2227.6	-23.9	-21.4	2.00	221.88	-20.3	
4	5713.0	8.58	221.88	5672.4	-411.1	-368.6	0.00	0.00	-348.4	
5	6142.2	0.00	0.00	6100.0	-435.0	-390.0	2.00	180.00	-368.7	
6	6453.1	0.00	0.00	6410.8	-435.0	-390.0	0.00	0.00	-368.7	
7	7397.5	85.00	89.73	7045.0	-432.2	191.1	9.00	89.73	211.6	
8	7472.5	85.00	89.73	7051.6	-431.9	265.8	0.00	0.00	286.2	
9	7528.1	90.00	89.73	7054.0	-431.6	321.3	9.00	0.00	341.6	
10	15418.0	90.00	89.73	7054.0	-394.0	8211.2	0.00	0.00	8220.6	Fagerberg Federal I12-615 BHL 330'FSL, 2040' FEL



WELL DETAILS: Fagerberg Federal I12-615					
Ground Level: 4800.0					
0.0	0.0	Northing	Easting	Latitude	Longitude
		1425062.35	3213095.67	40.497670	-104.733760
Plan: APD - Rev 0 (Fagerberg Federal I12-615/Original Drilling)					
Created By: Shailey Jewell			Date: 8:44, April 08 2015		
Checked: _____			Date: _____		
Reviewed: _____			Date: _____		
Approved: _____			Date: _____		