



02469539

OS-005-06264

LOC# 320638

Facility #: 156077

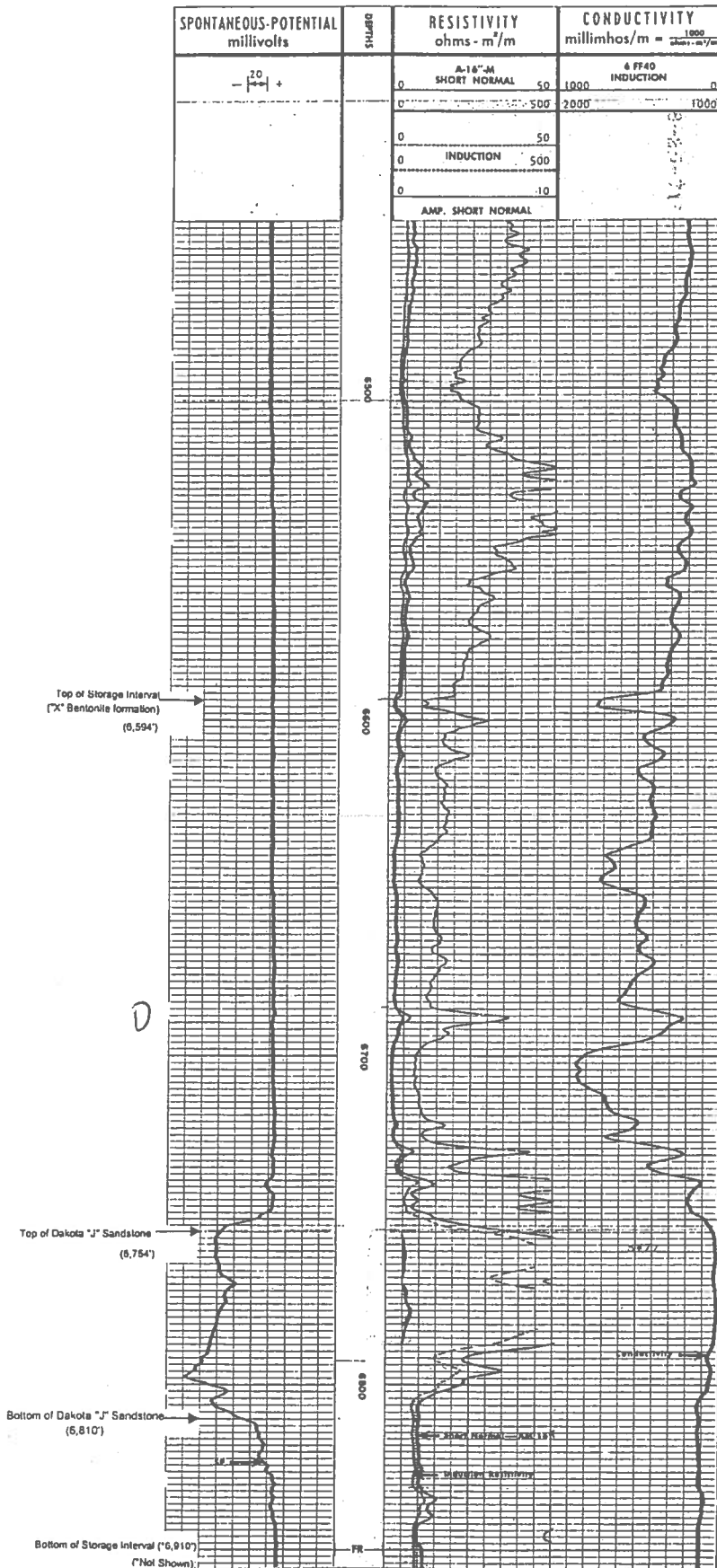
Storage Files
Schlumberger

INDUCTION-ELECTRICAL LOG

COUNTY ARAPAHOE FIELD or LOCATION LATIGO SEC. 24-5S-61W WELL NO. 1-24 BEHRENS - VAN MATRE COMPANY SUNDANCE OIL CO.*	LATIGO #7	
	COMPANY SUNDANCE OIL CO., MC CULLOCH OIL CORP., AMOCO PRODUCTION CO., TEXACO INC.	
	WELL NO. 1-24 BEHRENS - VAN MATRE	
	FIELD LATIGO	
COUNTY ARAPAHOE STATE COLORADO		
LOCATION 660' NW NW 770' FNL 660' FWL		Other Services: FDC-GR
Sec. 24 Twp. 5S Rge. 61W		
Permanent Datum: G.L., Elev. 5463		Elev.: K.B. 5471
Log Measured From K.B., 8 Ft. Above Perm. Datum		D.F. ----
Drilling Measured From K.B.		RF G.L. 5463
Date	8-25-71	
Run No.	ONE	
Depth—Driller	6845	
Depth—Logger	6851	
Btm. Log Interval	6850	
Top Log Interval	198	
Casing—Driller	8-5/8 @ 198	@ @ @
Casing—Logger	198	
Bit Size	7-7/8	
Type Fluid in Hole	FGM	
Dens.	Visc.	9.9 83
pH	Fluid Loss	9.0 5.1 ml ml ml ml
Source of Sample MUD PIT		
R _m @ Meas. Temp.	2.94 @ 80 °F	@ °F @ °F @ °F
R _{ml} @ Meas. Temp.	2.63 @ 80 °F	@ °F @ °F @ °F
R _{mc} @ Meas. Temp.	--- @ -- °F	@ °F @ °F @ °F
Source: R _{ml} R _{mc}	M --	
R _m @ BHT	1.53 @ 154 °F	@ °F @ °F @ °F
Time Since Circ.	2 HOURS	
Max. Rec. Temp.	154 °F	°F °F °F °F
Equip. Location	5657 FM	
Recorded By	ARKENBERG	
Witnessed By	GEYER	

The well name, location and borehole reference data were furnished by the customer.

Latigo Storge Field Type Log
Arapahoe County, Colorado



Storage 1.32+
100' above & below T

← Huntsman shale