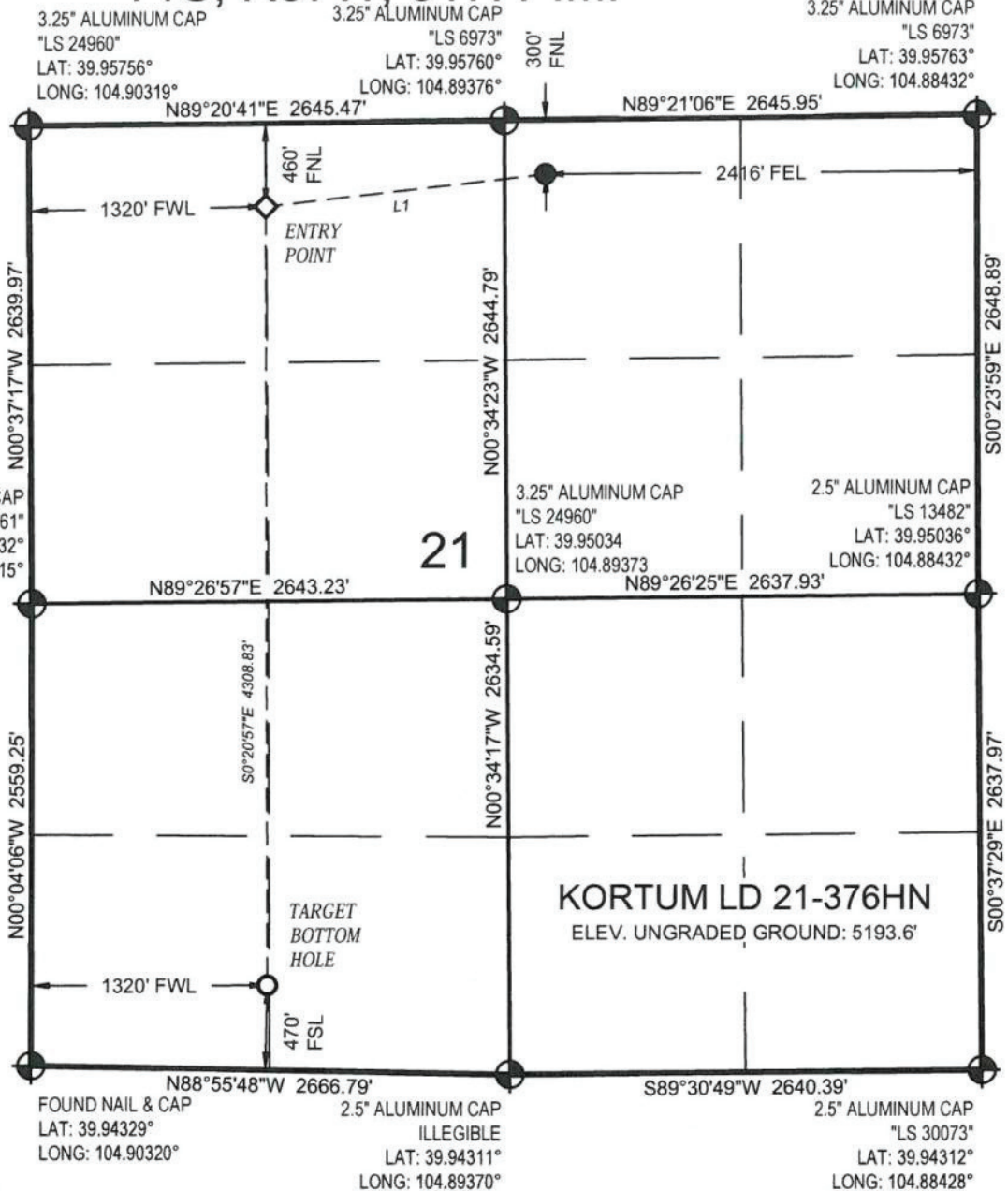


LEGEND

- PROPOSED WELLHEAD
- ◇ ENTRY POINT
- TARGET BOTTOM HOLE
- ⊕ SECTION CORNER

NOTE: UNITS SHOWN ARE IN U.S. SURVEY FEET AS MEASURED ON GROUND. LATITUDE AND LONGITUDE IS SHOWN BASED UPON COLORADO NORTH ZONE STATE PLANE (NAD83).

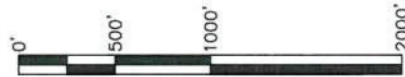
T1S, R67W, 6TH P.M.



LINE TABLE		
LINE	DIRECTION	LENGTH
L1	S83°27'30"W	1562.18'

PDOP = 1.1

NAD 83 (TARGET BOTTOM HOLE)	
LATITUDE = 39°56'40.17" (39.944493°)	
LONGITUDE = 104°53'54.55" (104.898487°)	
NAD 27 (TARGET BOTTOM HOLE)	
LATITUDE = 39°56'40.23" (39.944508°)	
LONGITUDE = 104°53'52.64" (104.897955°)	
NAD 83 (ENTRY POINT)	NAD 83 (SURFACE LOCATION)
LATITUDE = 39°57'22.74" (39.956317°)	LATITUDE = 39°57'24.40" (39.956777°)
LONGITUDE = 104°53'54.51" (104.898476°)	LONGITUDE = 104°53'34.58" (104.892938°)
NAD 27 (ENTRY POINT)	NAD 27 (SURFACE LOCATION)
LATITUDE = 39°57'22.80" (39.956333°)	LATITUDE = 39°57'24.45" (39.956793°)
LONGITUDE = 104°53'52.60" (104.897944°)	LONGITUDE = 104°53'32.66" (104.892407°)



CERTIFICATE

THIS IS TO CERTIFY THAT THE ABOVE PLAT WAS PREPARED FROM FIELD NOTES OF ACTUAL SURVEYS MADE BY ME OR UNDER MY DIRECT CHARGE AND THAT THE SAME ARE TRUE AND CORRECT TO THE BEST OF MY PROFESSIONAL KNOWLEDGE AND BELIEF.

DANA L. SPERLING
PROFESSIONAL LAND SURVEYOR
COLORADO LICENSE NUMBER 38012



BASIS OF BEARINGS

BASIS OF BEARINGS IS A G.P.S. OBSERVATION

BASIS OF ELEVATION

PUBLISHED VALUES OF NGS CONTROL STATION "J 411" WITH AN ELEVATION OF 5098 FEET (NAVD 88)

GREAT WESTERN OIL & GAS COMPANY

KORTUM LD 21-376HN
NW1/4, NE1/4, SECTION 21, T1S, R67W, 6TH P.M.
ADAMS COUNTY, COLORADO

SURVEYED BY: Dana L. Sperling and J.S.	DATE: 11.19.14
DRAWN BY: LHG	DATE DRAWN: 11.26.14
SCALE: 1" = 1000'	REVISED: 04.06.15

4690 Table Mountain Drive, Suite 200
Golden, CO 80403
TEL 303.237.2072
FAX 303.237.2659
www.olssonassociates.com

WELL LOCATION PLAT