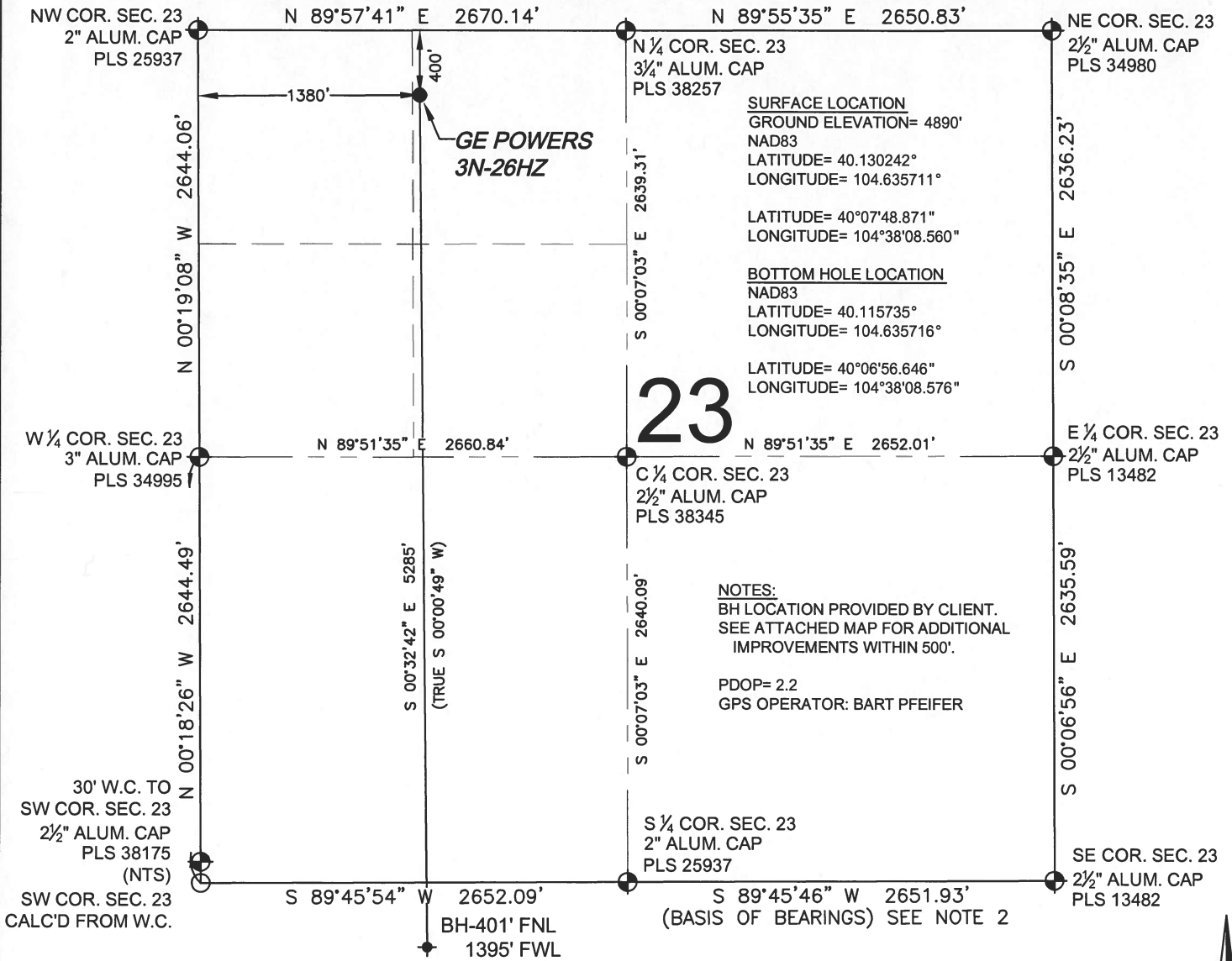


WELL LOCATION CERTIFICATE: GE POWERS 3N-26HZ

SECTION 23, TOWNSHIP 2 NORTH, RANGE 65 WEST, 6TH P.M.



LEGEND

- = EXISTING MONUMENT
- ◆ = BOTTOM HOLE
- = PROPOSED WELL
- ◆ = EXISTING WELL
- BH = BOTTOM HOLE
- = CALCULATED POSITION

NOTES:

- THIS FIELD SURVEY CONFORMS TO THE MINIMUM STANDARDS SET BY THE C.O.G.C.C., RULE NO. 215
- BEARINGS AND DISTANCE SHOWN HEREON ARE GRID AND BASED ON THE COLORADO STATE PLANE COORDINATE SYSTEM, NAD 83/2011 BETWEEN MONUMENTS AS LABELED HEREON AND ELEVATIONS SHOWN ARE NAVD 88, AS DERIVED BY GPS OBSERVATIONS.
- GRID DISTANCES ARE SHOWN, AS MEASURED IN THE FIELD, WITH TIES TO WELLS MEASURED PERPENDICULAR TO SECTION LINES. TO GET GROUND DISTANCES MULTIPLY THE SHOWN DISTANCE BY 1.000272228.
- ALL LINES SHOWN THAT ARE WITHOUT DIMENSION SHOULD BE CONSIDERED SCALED AND ONLY REPRESENT A GRAPHICAL DEPICTION OF THE APPROXIMATE LOCATION OF SAID LINE.

SHEET 1 OF 2

I, JACOB S. FRISCH, A LICENSED PROFESSIONAL LAND SURVEYOR IN THE STATE OF COLORADO DO HEREBY CERTIFY TO KERR-MCGEE OIL & GAS ONSHORE LP, THAT THE SURVEY AND WELL LOCATION CERTIFICATE SHOWN HEREON WERE DONE BY ME OR UNDER MY DIRECT SUPERVISION AND THAT THE DRAWING SHOWN HEREON ACCURATELY DEPICTS THE PROPOSED LOCATION OF THE WELL. THIS CERTIFICATE DOES NOT REPRESENT A LAND SURVEY PLAT OR IMPROVEMENT SURVEY PLAT AS DEFINED BY C.R.S. 38-51-102 AND CANNOT BE RELIED UPON TO DETERMINE OWNERSHIP.

JACOB S. FRISCH, PLS 38149
DATE: 03-05-15 JOB NO. B13.APC.0149.00

FOR AND ON BEHALF OF KERR-MCGEE OIL & GAS ONSHORE LP, LLC

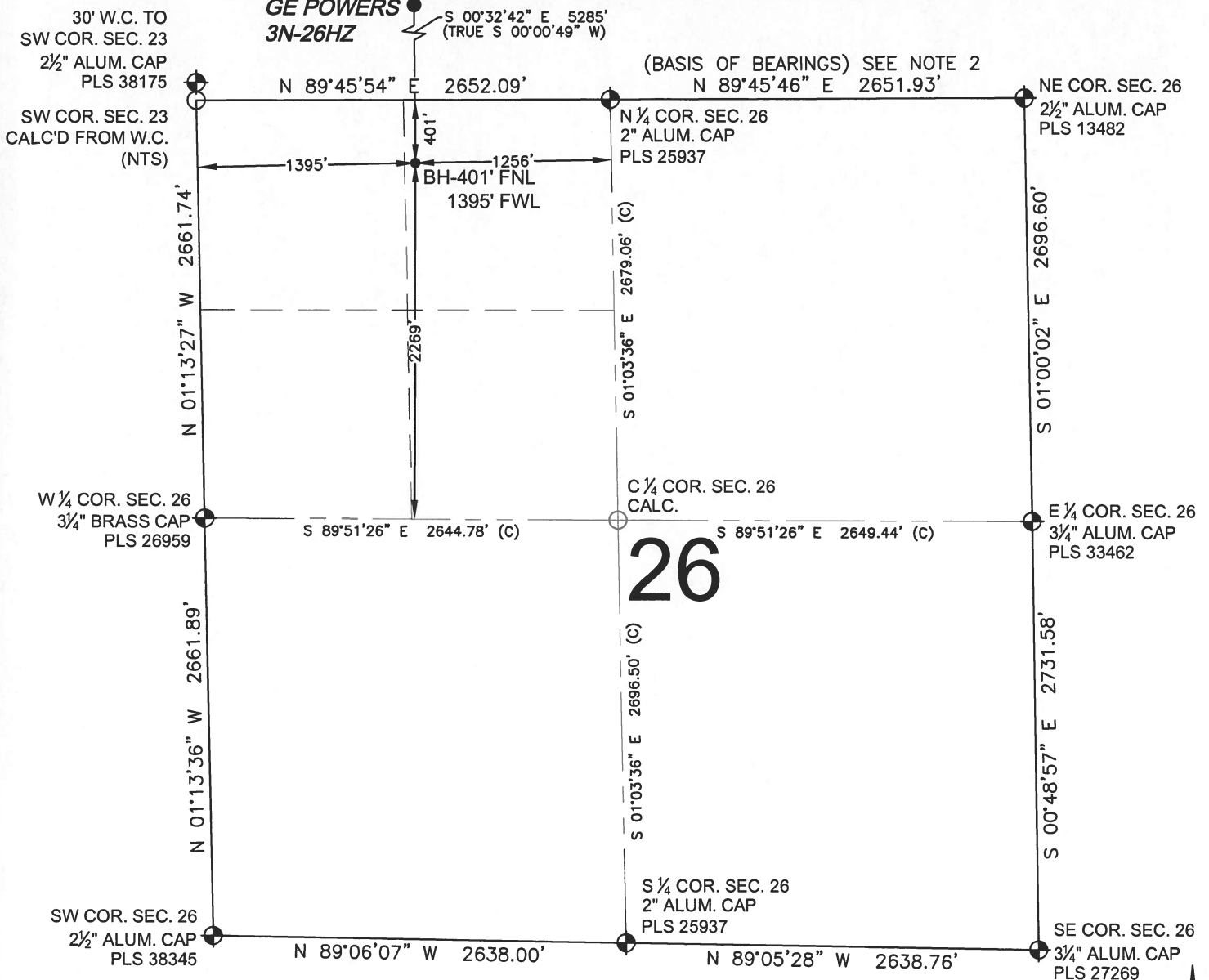


PREPARED BY: FIELD DATE: 10-14-14 SURFACE LOCATION: NE 1/4 NW 1/4, SEC. 23, T2N, R65W, 6TH P.M.
DRAWING DATE: 02-25-15
BY: SMF CHECKED: ATK WELD COUNTY, COLORADO

NOTICE: ACCORDING TO COLORADO LAW YOU MUST COMMENCE ANY LEGAL ACTION BASED UPON ANY DEFECT IN THIS SURVEY WITHIN THREE YEARS AFTER YOU FIRST DISCOVER SUCH DEFECT. IN NO EVENT MAY ANY ACTION BASED UPON ANY DEFECT IN THIS SURVEY BE COMMENCED MORE THAN TEN YEARS FROM THIS SAID DATE OF THIS CERTIFICATION SHOWN HEREON.

WELL LOCATION CERTIFICATE: GE POWERS 3N-26HZ

SECTION 26, TOWNSHIP 2 NORTH, RANGE 65 WEST, 6TH P.M.



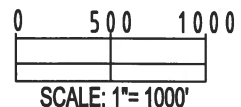
LEGEND

- ⊕ = EXISTING MONUMENT ◆ = BOTTOM HOLE
● = PROPOSED WELL ◆ = EXISTING WELL
BH = BOTTOM HOLE ○ = CALCULATED POSITION

NOTES:

- THIS FIELD SURVEY CONFORMS TO THE MINIMUM STANDARDS SET BY THE C.O.G.C.C., RULE NO. 215
- BEARINGS AND DISTANCE SHOWN HEREON ARE GRID AND BASED ON THE COLORADO STATE PLANE COORDINATE SYSTEM, NAD 83/2011 BETWEEN MONUMENTS AS LABELED HEREON AND ELEVATIONS SHOWN ARE NAVD 88, AS DERIVED BY GPS OBSERVATIONS.
- GRID DISTANCES ARE SHOWN, AS MEASURED IN THE FIELD, WITH TIES TO WELLS MEASURED PERPENDICULAR TO SECTION LINES. TO GET GROUND DISTANCES MULTIPLY THE SHOWN DISTANCE BY 1.000272228.
- ALL LINES SHOWN THAT ARE WITHOUT DIMENSION SHOULD BE CONSIDERED SCALED AND ONLY REPRESENT A GRAPHICAL DEPICTION OF THE APPROXIMATE LOCATION OF SAID LINE.

SHEET 2 OF 2



PREPARED BY:	FIELD DATE:	SURFACE LOCATION:
PFS	10-14-14	NE 1/4 NW 1/4,
Petroleum Field Services, LLC	DRAWING DATE:	SEC. 23, T2N, R65W, 6TH P.M.
7535 Hilltop Circle	02-25-15	
Denver, CO 80221	BY:	CHECKED:
	SMF	ATK
		WELD COUNTY, COLORADO

JACOB S. FRISCH, PLS 38149
DATE: 03-05-15 JOB NO. B13.APC.0149.00
FOR AND ON BEHALF OF P.F.S., LLC



NOTICE: ACCORDING TO COLORADO LAW YOU MUST COMMENCE ANY LEGAL ACTION BASED UPON ANY DEFECT IN THIS SURVEY WITHIN THREE YEARS AFTER YOU FIRST DISCOVER SUCH DEFECT. IN NO EVENT MAY ANY ACTION BASED UPON ANY DEFECT IN THIS SURVEY BE COMMENCED MORE THAN TEN YEARS FROM THIS SAID DATE OF THIS CERTIFICATION SHOWN HEREON.