

KERR-MCGEE OIL & GAS ONSHORE LP_1



Location: Compass Import Slot: SLOT#03 GE POWERS 29N-26HZ
Field: WELD COUNTY (UTM (ZONE 13)/NAD83/TRUE NORTH) Well: GE POWERS 29N-26HZ
Facility: 2N-65W-23 Offsets Wellbore: GE POWERS 29N-26HZ PWB

Plot reference wellpath is GE POWERS 29N-26HZ (PERMIT REV-2) PWP

True vertical depths are referenced to PERMIT (17KB) (RKB) Grid System: NAD83 / UTM Zone 13 North, US feet
Measured depths are referenced to PERMIT (17KB) (RKB) North Reference: True north
PERMIT (17KB) (RKB) to Mean Sea Level: 4907 feet Scale: Grid distance
Mean Sea Level to Mud line (At Slot: SLOT#03 GE POWERS 29N-26HZ): 0 feet Depths are in feet
Coordinates are in feet referenced to Slot Created by: precain on 2/3/2015

Location Information

Facility Name			Grid East (US ft)	Grid North (US ft)	Latitude	Longitude
2N-65W-23 Offsets			1743038.821	14574304.203	40°07'48.198"N	104°37'58.303"W
Slot	Local N (ft)	Local E (ft)	Grid East (US ft)	Grid North (US ft)	Latitude	Longitude
SLOT#03 GE POWERS 29N-26HZ	68.80	-856.50	1742182.043	14574369.465	40°07'48.878"N	104°38'09.334"W
PERMIT (17KB) (RKB) to Mud line (At Slot: SLOT#03 GE POWERS 29N-26HZ)					4907ft	
Mean Sea Level to Mud line (At Slot: SLOT#03 GE POWERS 29N-26HZ)					0ft	
PERMIT (17KB) (RKB) to Mean Sea Level					4907ft	

Survey Program

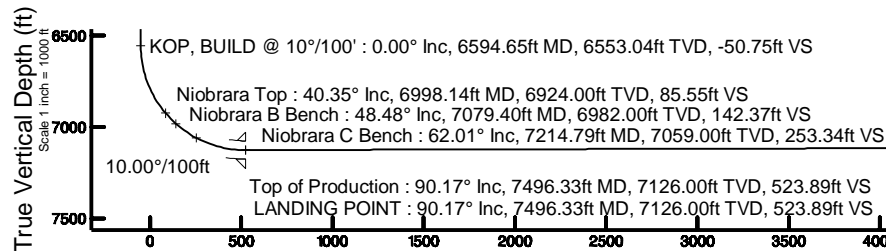
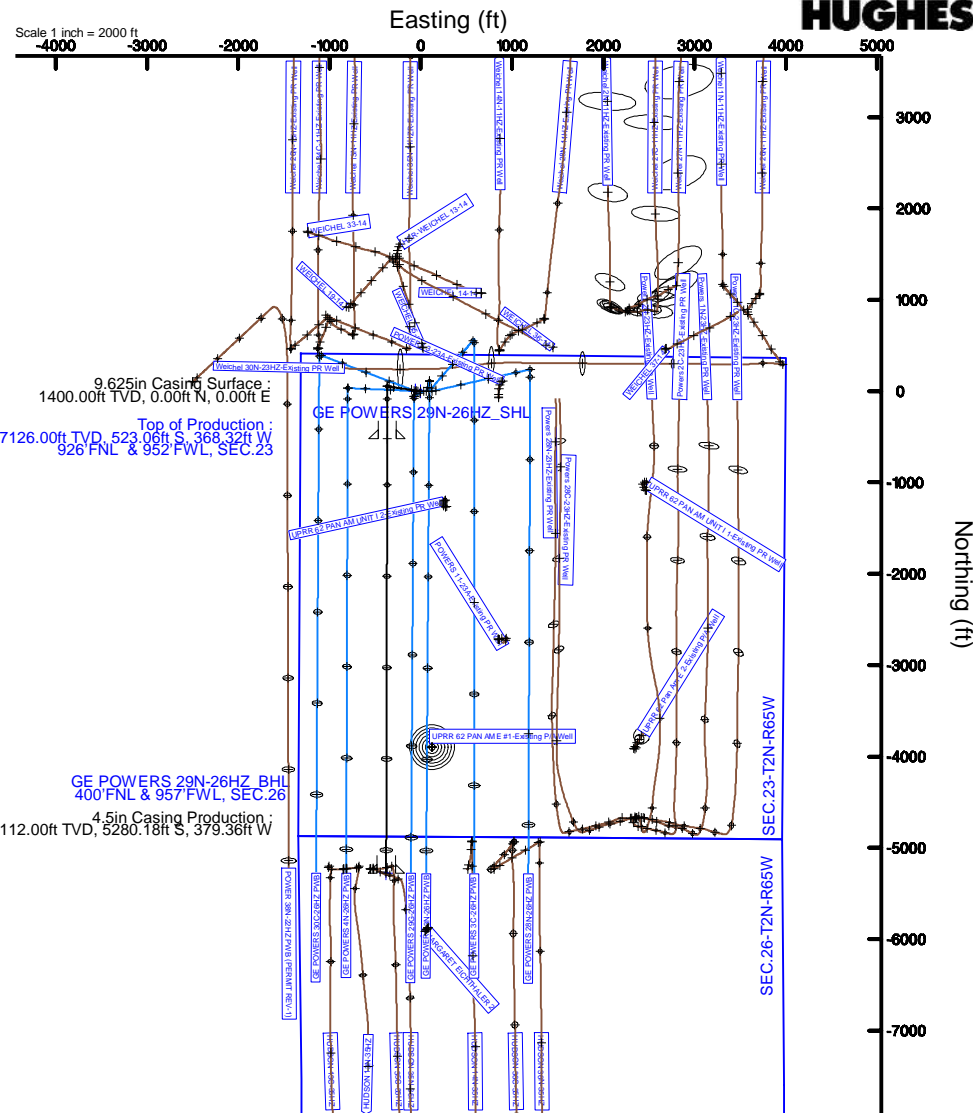
Start MD (ft)	End MD (ft)	Tool	Model	Log Name/Comment	Wellbore
17.00	12253.48	ISOWSA MWD, Rev. 2, axial magnetic correction	ISOWSA MWD, Rev. 2, axial magnetic correction (Standard) (Mag/AR IFR Wattenberg)		GE POWERS 29N-26HZ PWB

Well Profile Data

Design Comment	MD (ft)	Inc (°)	Az (°)	TVD (ft)	Local N (ft)	Local E (ft)	DLS (°/100ft)	VS (ft)
TIE-ON	17.00	0.000	278.000	17.00	0.00	0.00	0.00	0.00
BEGIN NUDGE	1500.00	0.000	278.000	1500.00	0.00	0.00	0.00	0.00
END NUDGE	2300.00	16.000	278.000	2289.64	15.45	-109.90	2.00	-15.20
BEGIN DROP	2839.25	16.000	278.000	2808.00	36.13	-257.09	0.00	-35.55
END DROP	3639.25	0.000	180.133	3597.64	51.58	-366.98	2.00	-50.75
KOP, BUILD @ 10°/100'	6594.65	0.000	180.133	6553.04	51.58	-366.98	0.00	-50.75
LANDING POINT	7496.33	90.169	180.133	7126.00	-523.07	-368.32	10.00	523.89
TOTAL DEPTH	12253.48	90.169	180.133	7112.00	-5280.18	-379.36	0.00	5281.02

Targets

Name	MD (ft)	TVD (ft)	Local N (ft)	Local E (ft)	Grid East (US ft)	Grid North (US ft)	Latitude	Longitude
GE POWERS 29N-26HZ_SHL	4907.00	0.00	0.00	0.00	1742182.04	14574369.46	40°07'48.878"N	104°38'09.334"W
SEC.23-T2N-R65W	4907.00	0.40	-60.10	-60.10	1742121.95	14574369.62	40°07'48.882"N	104°38'10.108"W
SEC.26-T2N-R65W	4907.00	0.40	-60.10	-60.10	1742121.95	14574369.62	40°07'48.882"N	104°38'10.108"W
GE POWERS 29N-26HZ_BHL	12253.48	7112.00	-5280.18	-379.36	1741824.31	14569087.79	40°06'56.678"N	104°38'14.219"W



Vertical Section (ft)
Azimuth 180.13° with reference 0.00 N, 0.00 E

Scale 1 inch = 1000 ft

REFERENCE WELLPATH IDENTIFICATION			
Operator	KERR-MCGEE OIL & GAS ONSHORE LP_1	Slot	SLOT#03 GE POWERS 29N-26HZ
Area	Compass Import	Well	GE POWERS 29N-26HZ
Field	WELD COUNTY (UTM (ZONE 13)/NAD83/TRUE NORTH)	Wellbore	GE POWERS 29N-26HZ PWB
Facility	2N-65W-23 Offsets		

REPORT SETUP INFORMATION			
Projection System	NAD83 / UTM Zone 13 North, US feet	Software System	WellArchitect® 4.1.1
North Reference	True	User	Precain
Scale	0.999612	Report Generated	4/24/2015 at 11:20:32 AM
Convergence at slot	0.23° East	Database/Source file	WellArchitectDC/GE_POWER_29N-26HZ_PWB.xml

WELLPATH LOCATION						
	Local coordinates		Grid coordinates		Geographic coordinates	
	North[ft]	East[ft]	Easting[US ft]	Northing[US ft]	Latitude	Longitude
Slot Location	68.80	-856.50	1742182.04	14574369.47	40°07'48.878"N	104°38'09.334"W
Facility Reference Pt			1743038.82	14574304.20	40°07'48.198"N	104°37'58.303"W
Field Reference Pt			1700626.56	14568707.73	40°06'54.245"N	104°47'04.711"W

WELLPATH DATUM			
Calculation method	Minimum curvature	PERMIT (17'KB) (RKB) to 2N-65W-23 Offsets vertical datum	4907.00ft
Horizontal Reference Pt	Slot	PERMIT (17'KB) (RKB) to Mean Sea Level	4907.00ft
Vertical Reference Pt	PERMIT (17'KB) (RKB)	PERMIT (17'KB) (RKB) to Mud Line at Slot (SLOT#03 GE POWERS 29N-26HZ)	4907.00ft
MD Reference Pt	PERMIT (17'KB) (RKB)	Section Origin	N 0.00, E 0.00 ft
Field Vertical Reference	Mean Sea Level	Section Azimuth	180.13°

REFERENCE WELLPATH IDENTIFICATION			
Operator	KERR-MCGEE OIL & GAS ONSHORE LP_1	Slot	SLOT#03 GE POWERS 29N-26HZ
Area	Compass Import	Well	GE POWERS 29N-26HZ
Field	WELD COUNTY (UTM (ZONE 13)/NAD83/TRUE NORTH)	Wellbore	GE POWERS 29N-26HZ PWB
Facility	2N-65W-23 Offsets		

WELLPATH DATA (138 stations) † = interpolated/extrapolated station										
MD [ft]	Inclination [°]	Azimuth [°]	TVD [ft]	Vert Sect [ft]	North [ft]	East [ft]	Latitude	Longitude	DLS [°/100ft]	Comments
0.00†	0.000	278.000	0.00	0.00	0.00	0.00	40°07'48.878"N	104°38'09.334"W	0.00	
17.00	0.000	278.000	17.00	0.00	0.00	0.00	40°07'48.878"N	104°38'09.334"W	0.00	TIE-ON
117.00†	0.000	278.000	117.00	0.00	0.00	0.00	40°07'48.878"N	104°38'09.334"W	0.00	
217.00†	0.000	278.000	217.00	0.00	0.00	0.00	40°07'48.878"N	104°38'09.334"W	0.00	
317.00†	0.000	278.000	317.00	0.00	0.00	0.00	40°07'48.878"N	104°38'09.334"W	0.00	
417.00†	0.000	278.000	417.00	0.00	0.00	0.00	40°07'48.878"N	104°38'09.334"W	0.00	
517.00†	0.000	278.000	517.00	0.00	0.00	0.00	40°07'48.878"N	104°38'09.334"W	0.00	
617.00†	0.000	278.000	617.00	0.00	0.00	0.00	40°07'48.878"N	104°38'09.334"W	0.00	
717.00†	0.000	278.000	717.00	0.00	0.00	0.00	40°07'48.878"N	104°38'09.334"W	0.00	
817.00†	0.000	278.000	817.00	0.00	0.00	0.00	40°07'48.878"N	104°38'09.334"W	0.00	
917.00†	0.000	278.000	917.00	0.00	0.00	0.00	40°07'48.878"N	104°38'09.334"W	0.00	
1017.00†	0.000	278.000	1017.00	0.00	0.00	0.00	40°07'48.878"N	104°38'09.334"W	0.00	
1117.00†	0.000	278.000	1117.00	0.00	0.00	0.00	40°07'48.878"N	104°38'09.334"W	0.00	
1217.00†	0.000	278.000	1217.00	0.00	0.00	0.00	40°07'48.878"N	104°38'09.334"W	0.00	
1317.00†	0.000	278.000	1317.00	0.00	0.00	0.00	40°07'48.878"N	104°38'09.334"W	0.00	
1350.00†	0.000	278.000	1350.00	0.00	0.00	0.00	40°07'48.878"N	104°38'09.334"W	0.00	Fox Hills Marker
1417.00†	0.000	278.000	1417.00	0.00	0.00	0.00	40°07'48.878"N	104°38'09.334"W	0.00	
1500.00	0.000	278.000	1500.00	0.00	0.00	0.00	40°07'48.878"N	104°38'09.334"W	0.00	BEGIN NUDGE
1517.00†	0.340	278.000	1517.00	-0.01	0.01	-0.05	40°07'48.878"N	104°38'09.335"W	2.00	
1617.00†	2.340	278.000	1616.97	-0.33	0.33	-2.37	40°07'48.881"N	104°38'09.364"W	2.00	
1717.00†	4.340	278.000	1716.79	-1.12	1.14	-8.13	40°07'48.889"N	104°38'09.439"W	2.00	
1817.00†	6.340	278.000	1816.35	-2.40	2.44	-17.35	40°07'48.902"N	104°38'09.557"W	2.00	
1917.00†	8.340	278.000	1915.53	-4.15	4.22	-30.00	40°07'48.920"N	104°38'09.720"W	2.00	
2017.00†	10.340	278.000	2014.20	-6.37	6.47	-46.07	40°07'48.942"N	104°38'09.927"W	2.00	
2117.00†	12.340	278.000	2112.24	-9.06	9.21	-65.54	40°07'48.969"N	104°38'10.178"W	2.00	
2217.00†	14.340	278.000	2209.54	-12.22	12.42	-88.39	40°07'49.001"N	104°38'10.472"W	2.00	
2300.00	16.000	278.000	2289.64	-15.20	15.45	-109.90	40°07'49.031"N	104°38'10.749"W	2.00	END NUDGE
2317.00†	16.000	278.000	2305.98	-15.84	16.10	-114.54	40°07'49.037"N	104°38'10.809"W	0.00	
2417.00†	16.000	278.000	2402.11	-19.61	19.93	-141.83	40°07'49.075"N	104°38'11.161"W	0.00	
2517.00†	16.000	278.000	2498.24	-23.39	23.77	-169.13	40°07'49.113"N	104°38'11.512"W	0.00	
2617.00†	16.000	278.000	2594.36	-27.16	27.61	-196.42	40°07'49.151"N	104°38'11.864"W	0.00	
2717.00†	16.000	278.000	2690.49	-30.94	31.44	-223.72	40°07'49.189"N	104°38'12.215"W	0.00	
2817.00†	16.000	278.000	2786.62	-34.71	35.28	-251.01	40°07'49.227"N	104°38'12.567"W	0.00	
2839.25	16.000	278.000	2808.00	-35.55	36.13	-257.09	40°07'49.235"N	104°38'12.645"W	0.00	BEGIN DROP
2917.00†	14.445	278.000	2883.02	-38.35	38.97	-277.30	40°07'49.263"N	104°38'12.905"W	2.00	
3017.00†	12.445	278.000	2980.28	-41.53	42.21	-300.33	40°07'49.295"N	104°38'13.202"W	2.00	
3117.00†	10.445	278.000	3078.28	-44.25	44.97	-319.98	40°07'49.323"N	104°38'13.455"W	2.00	
3217.00†	8.445	278.000	3176.92	-46.50	47.25	-336.22	40°07'49.345"N	104°38'13.664"W	2.00	
3317.00†	6.445	278.000	3276.08	-48.27	49.06	-349.06	40°07'49.363"N	104°38'13.830"W	2.00	
3417.00†	4.445	278.000	3375.62	-49.57	50.38	-358.45	40°07'49.376"N	104°38'13.951"W	2.00	
3517.00†	2.445	278.000	3475.43	-50.39	51.21	-364.40	40°07'49.384"N	104°38'14.027"W	2.00	
3617.00†	0.445	278.000	3575.40	-50.74	51.56	-366.90	40°07'49.388"N	104°38'14.059"W	2.00	
3639.25	0.000	180.133	3597.64	-50.75	51.58	-366.98	40°07'49.388"N	104°38'14.060"W	2.00	END DROP
3717.00†	0.000	180.133	3675.40	-50.75	51.58	-366.98	40°07'49.388"N	104°38'14.060"W	0.00	
3817.00†	0.000	180.133	3775.40	-50.75	51.58	-366.98	40°07'49.388"N	104°38'14.060"W	0.00	

REFERENCE WELLPATH IDENTIFICATION			
Operator	KERR-MCGEE OIL & GAS ONSHORE LP_1	Slot	SLOT#03 GE POWERS 29N-26HZ
Area	Compass Import	Well	GE POWERS 29N-26HZ
Field	WELD COUNTY (UTM (ZONE 13)/NAD83/TRUE NORTH)	Wellbore	GE POWERS 29N-26HZ PWB
Facility	2N-65W-23 Offsets		

WELLPATH DATA (138 stations) † = interpolated/extrapolated station										
MD [ft]	Inclination [°]	Azimuth [°]	TVD [ft]	Vert Sect [ft]	North [ft]	East [ft]	Latitude	Longitude	DLS [°/100ft]	Comments
3917.00†	0.000	180.133	3875.40	-50.75	51.58	-366.98	40°07'49.388"N	104°38'14.060"W	0.00	
4017.00†	0.000	180.133	3975.40	-50.75	51.58	-366.98	40°07'49.388"N	104°38'14.060"W	0.00	
4117.00†	0.000	180.133	4075.40	-50.75	51.58	-366.98	40°07'49.388"N	104°38'14.060"W	0.00	
4217.00†	0.000	180.133	4175.40	-50.75	51.58	-366.98	40°07'49.388"N	104°38'14.060"W	0.00	
4317.00†	0.000	180.133	4275.40	-50.75	51.58	-366.98	40°07'49.388"N	104°38'14.060"W	0.00	
4417.00†	0.000	180.133	4375.40	-50.75	51.58	-366.98	40°07'49.388"N	104°38'14.060"W	0.00	
4517.00†	0.000	180.133	4475.40	-50.75	51.58	-366.98	40°07'49.388"N	104°38'14.060"W	0.00	
4532.60†	0.000	180.133	4491.00	-50.75	51.58	-366.98	40°07'49.388"N	104°38'14.060"W	0.00	Sussex
4617.00†	0.000	180.133	4575.40	-50.75	51.58	-366.98	40°07'49.388"N	104°38'14.060"W	0.00	
4717.00†	0.000	180.133	4675.40	-50.75	51.58	-366.98	40°07'49.388"N	104°38'14.060"W	0.00	
4817.00†	0.000	180.133	4775.40	-50.75	51.58	-366.98	40°07'49.388"N	104°38'14.060"W	0.00	
4917.00†	0.000	180.133	4875.40	-50.75	51.58	-366.98	40°07'49.388"N	104°38'14.060"W	0.00	
5017.00†	0.000	180.133	4975.40	-50.75	51.58	-366.98	40°07'49.388"N	104°38'14.060"W	0.00	
5117.00†	0.000	180.133	5075.40	-50.75	51.58	-366.98	40°07'49.388"N	104°38'14.060"W	0.00	
5217.00†	0.000	180.133	5175.40	-50.75	51.58	-366.98	40°07'49.388"N	104°38'14.060"W	0.00	
5317.00†	0.000	180.133	5275.40	-50.75	51.58	-366.98	40°07'49.388"N	104°38'14.060"W	0.00	
5417.00†	0.000	180.133	5375.40	-50.75	51.58	-366.98	40°07'49.388"N	104°38'14.060"W	0.00	
5517.00†	0.000	180.133	5475.40	-50.75	51.58	-366.98	40°07'49.388"N	104°38'14.060"W	0.00	
5617.00†	0.000	180.133	5575.40	-50.75	51.58	-366.98	40°07'49.388"N	104°38'14.060"W	0.00	
5717.00†	0.000	180.133	5675.40	-50.75	51.58	-366.98	40°07'49.388"N	104°38'14.060"W	0.00	
5817.00†	0.000	180.133	5775.40	-50.75	51.58	-366.98	40°07'49.388"N	104°38'14.060"W	0.00	
5917.00†	0.000	180.133	5875.40	-50.75	51.58	-366.98	40°07'49.388"N	104°38'14.060"W	0.00	
6017.00†	0.000	180.133	5975.40	-50.75	51.58	-366.98	40°07'49.388"N	104°38'14.060"W	0.00	
6117.00†	0.000	180.133	6075.40	-50.75	51.58	-366.98	40°07'49.388"N	104°38'14.060"W	0.00	
6217.00†	0.000	180.133	6175.40	-50.75	51.58	-366.98	40°07'49.388"N	104°38'14.060"W	0.00	
6317.00†	0.000	180.133	6275.40	-50.75	51.58	-366.98	40°07'49.388"N	104°38'14.060"W	0.00	
6417.00†	0.000	180.133	6375.40	-50.75	51.58	-366.98	40°07'49.388"N	104°38'14.060"W	0.00	
6430.60†	0.000	180.133	6389.00	-50.75	51.58	-366.98	40°07'49.388"N	104°38'14.060"W	0.00	Sharon Springs
6517.00†	0.000	180.133	6475.40	-50.75	51.58	-366.98	40°07'49.388"N	104°38'14.060"W	0.00	
6594.65	0.000	180.133	6553.04	-50.75	51.58	-366.98	40°07'49.388"N	104°38'14.060"W	0.00	KOP, BUILD @ 10°/100'
6617.00†	2.235	180.133	6575.39	-50.31	51.14	-366.99	40°07'49.384"N	104°38'14.060"W	10.00	
6717.00†	12.235	180.133	6674.47	-37.74	38.56	-367.01	40°07'49.259"N	104°38'14.061"W	10.00	
6817.00†	22.235	180.133	6769.86	-8.14	8.97	-367.08	40°07'48.967"N	104°38'14.062"W	10.00	
6917.00†	32.235	180.133	6858.66	37.56	-36.74	-367.19	40°07'48.515"N	104°38'14.063"W	10.00	
6998.14†	40.349	180.133	6924.00	85.55	-84.72	-367.30	40°07'48.040"N	104°38'14.064"W	10.00	Niobrara Top
7017.00†	42.235	180.133	6938.17	98.00	-97.17	-367.33	40°07'47.917"N	104°38'14.065"W	10.00	
7079.40†	48.475	180.133	6982.00	142.37	-141.54	-367.43	40°07'47.479"N	104°38'14.066"W	10.00	Niobrara B Bench
7117.00†	52.235	180.133	7005.98	171.32	-170.49	-367.50	40°07'47.193"N	104°38'14.067"W	10.00	
7214.79†	62.014	180.133	7059.00	253.34	-252.52	-367.69	40°07'46.382"N	104°38'14.069"W	10.00	Niobrara C Bench
7217.00†	62.235	180.133	7060.04	255.30	-254.47	-367.69	40°07'46.362"N	104°38'14.070"W	10.00	
7317.00†	72.235	180.133	7098.68	347.39	-346.57	-367.91	40°07'45.452"N	104°38'14.072"W	10.00	
7417.00†	82.235	180.133	7120.75	444.80	-443.97	-368.13	40°07'44.489"N	104°38'14.075"W	10.00	
7496.33†	90.168	180.133	7126.00	523.89	-523.06	-368.32	40°07'43.707"N	104°38'14.078"W	10.00	Top of Production
7496.33	90.169	180.133	7126.00	523.89	-523.07	-368.32	40°07'43.707"N	104°38'14.078"W	10.00	LANDING POINT
7517.00†	90.169	180.133	7125.94	544.56	-543.73	-368.37	40°07'43.503"N	104°38'14.078"W	0.00	

REFERENCE WELLPATH IDENTIFICATION			
Operator	KERR-MCGEE OIL & GAS ONSHORE LP_1	Slot	SLOT#03 GE POWERS 29N-26HZ
Area	Compass Import	Well	GE POWERS 29N-26HZ
Field	WELD COUNTY (UTM (ZONE 13)/NAD83/TRUE NORTH)	Wellbore	GE POWERS 29N-26HZ PWB
Facility	2N-65W-23 Offsets		

WELLPATH DATA (138 stations) † = interpolated/extrapolated station										
MD [ft]	Inclination [°]	Azimuth [°]	TVD [ft]	Vert Sect [ft]	North [ft]	East [ft]	Latitude	Longitude	DLS [°/100ft]	Comments
7617.00†	90.169	180.133	7125.64	644.56	-643.73	-368.60	40°07'42.514"N	104°38'14.081"W	0.00	
7717.00†	90.169	180.133	7125.35	744.56	-743.73	-368.83	40°07'41.525"N	104°38'14.084"W	0.00	
7817.00†	90.169	180.133	7125.05	844.56	-843.73	-369.06	40°07'40.537"N	104°38'14.087"W	0.00	
7917.00†	90.169	180.133	7124.76	944.56	-943.73	-369.30	40°07'39.548"N	104°38'14.090"W	0.00	
8017.00†	90.169	180.133	7124.47	1044.56	-1043.73	-369.53	40°07'38.560"N	104°38'14.093"W	0.00	
8117.00†	90.169	180.133	7124.17	1144.56	-1143.73	-369.76	40°07'37.571"N	104°38'14.096"W	0.00	
8217.00†	90.169	180.133	7123.88	1244.56	-1243.73	-369.99	40°07'36.583"N	104°38'14.099"W	0.00	
8317.00†	90.169	180.133	7123.58	1344.56	-1343.73	-370.22	40°07'35.594"N	104°38'14.102"W	0.00	
8417.00†	90.169	180.133	7123.29	1444.56	-1443.73	-370.46	40°07'34.605"N	104°38'14.105"W	0.00	
8517.00†	90.169	180.133	7122.99	1544.56	-1543.73	-370.69	40°07'33.617"N	104°38'14.108"W	0.00	
8617.00†	90.169	180.133	7122.70	1644.56	-1643.73	-370.92	40°07'32.628"N	104°38'14.111"W	0.00	
8717.00†	90.169	180.133	7122.41	1744.56	-1743.72	-371.15	40°07'31.640"N	104°38'14.114"W	0.00	
8817.00†	90.169	180.133	7122.11	1844.56	-1843.72	-371.38	40°07'30.651"N	104°38'14.117"W	0.00	
8917.00†	90.169	180.133	7121.82	1944.56	-1943.72	-371.62	40°07'29.662"N	104°38'14.120"W	0.00	
9017.00†	90.169	180.133	7121.52	2044.55	-2043.72	-371.85	40°07'28.674"N	104°38'14.123"W	0.00	
9117.00†	90.169	180.133	7121.23	2144.55	-2143.72	-372.08	40°07'27.685"N	104°38'14.126"W	0.00	
9217.00†	90.169	180.133	7120.94	2244.55	-2243.72	-372.31	40°07'26.697"N	104°38'14.129"W	0.00	
9317.00†	90.169	180.133	7120.64	2344.55	-2343.72	-372.55	40°07'25.708"N	104°38'14.132"W	0.00	
9417.00†	90.169	180.133	7120.35	2444.55	-2443.72	-372.78	40°07'24.719"N	104°38'14.135"W	0.00	
9517.00†	90.169	180.133	7120.05	2544.55	-2543.72	-373.01	40°07'23.731"N	104°38'14.138"W	0.00	
9617.00†	90.169	180.133	7119.76	2644.55	-2643.72	-373.24	40°07'22.742"N	104°38'14.141"W	0.00	
9717.00†	90.169	180.133	7119.46	2744.55	-2743.72	-373.47	40°07'21.754"N	104°38'14.143"W	0.00	
9817.00†	90.169	180.133	7119.17	2844.55	-2843.72	-373.71	40°07'20.765"N	104°38'14.146"W	0.00	
9917.00†	90.169	180.133	7118.88	2944.55	-2943.72	-373.94	40°07'19.777"N	104°38'14.149"W	0.00	
10017.00†	90.169	180.133	7118.58	3044.55	-3043.72	-374.17	40°07'18.788"N	104°38'14.152"W	0.00	
10117.00†	90.169	180.133	7118.29	3144.55	-3143.71	-374.40	40°07'17.799"N	104°38'14.155"W	0.00	
10217.00†	90.169	180.133	7117.99	3244.55	-3243.71	-374.64	40°07'16.811"N	104°38'14.158"W	0.00	
10317.00†	90.169	180.133	7117.70	3344.55	-3343.71	-374.87	40°07'15.822"N	104°38'14.161"W	0.00	
10417.00†	90.169	180.133	7117.40	3444.55	-3443.71	-375.10	40°07'14.834"N	104°38'14.164"W	0.00	
10517.00†	90.169	180.133	7117.11	3544.55	-3543.71	-375.33	40°07'13.845"N	104°38'14.167"W	0.00	
10617.00†	90.169	180.133	7116.82	3644.55	-3643.71	-375.56	40°07'12.856"N	104°38'14.170"W	0.00	
10717.00†	90.169	180.133	7116.52	3744.55	-3743.71	-375.80	40°07'11.868"N	104°38'14.173"W	0.00	
10817.00†	90.169	180.133	7116.23	3844.55	-3843.71	-376.03	40°07'10.879"N	104°38'14.176"W	0.00	
10917.00†	90.169	180.133	7115.93	3944.55	-3943.71	-376.26	40°07'09.891"N	104°38'14.179"W	0.00	
11017.00†	90.169	180.133	7115.64	4044.55	-4043.71	-376.49	40°07'08.902"N	104°38'14.182"W	0.00	
11117.00†	90.169	180.133	7115.34	4144.55	-4143.71	-376.73	40°07'07.913"N	104°38'14.185"W	0.00	
11217.00†	90.169	180.133	7115.05	4244.55	-4243.71	-376.96	40°07'06.925"N	104°38'14.188"W	0.00	
11317.00†	90.169	180.133	7114.76	4344.54	-4343.71	-377.19	40°07'05.936"N	104°38'14.191"W	0.00	
11417.00†	90.169	180.133	7114.46	4444.54	-4443.71	-377.42	40°07'04.948"N	104°38'14.194"W	0.00	
11517.00†	90.169	180.133	7114.17	4544.54	-4543.71	-377.65	40°07'03.959"N	104°38'14.197"W	0.00	
11617.00†	90.169	180.133	7113.87	4644.54	-4643.70	-377.89	40°07'02.971"N	104°38'14.200"W	0.00	
11717.00†	90.169	180.133	7113.58	4744.54	-4743.70	-378.12	40°07'01.982"N	104°38'14.203"W	0.00	
11817.00†	90.169	180.133	7113.28	4844.54	-4843.70	-378.35	40°07'00.993"N	104°38'14.206"W	0.00	
11917.00†	90.169	180.133	7112.99	4944.54	-4943.70	-378.58	40°07'00.005"N	104°38'14.209"W	0.00	
12017.00†	90.169	180.133	7112.70	5044.54	-5043.70	-378.82	40°06'59.016"N	104°38'14.212"W	0.00	

REFERENCE WELLPATH IDENTIFICATION			
Operator	KERR-MCGEE OIL & GAS ONSHORE LP_1	Slot	SLOT#03 GE POWERS 29N-26HZ
Area	Compass Import	Well	GE POWERS 29N-26HZ
Field	WELD COUNTY (UTM (ZONE 13)/NAD83/TRUE NORTH)	Wellbore	GE POWERS 29N-26HZ PWB
Facility	2N-65W-23 Offsets		

WELLPATH DATA (138 stations) † = interpolated/extrapolated station										
MD [ft]	Inclination [°]	Azimuth [°]	TVD [ft]	Vert Sect [ft]	North [ft]	East [ft]	Latitude	Longitude	DLS [°/100ft]	Comments
12117.00†	90.169	180.133	7112.40	5144.54	-5143.70	-379.05	40°06'58.028"N	104°38'14.215"W	0.00	
12217.00†	90.169	180.133	7112.11	5244.54	-5243.70	-379.28	40°06'57.039"N	104°38'14.218"W	0.00	
12253.48	90.169	180.133	7112.00†	5281.02	-5280.18	-379.36	40°06'56.678"N	104°38'14.219"W	0.00	TOTAL DEPTH

HOLE & CASING SECTIONS									
- Ref Wellbore: GE POWERS 29N-26HZ PWB					Ref Wellpath: GE POWERS 29N-26HZ (PERMIT REV-2) PWP				
String/Diameter	Start MD [ft]	End MD [ft]	Interval [ft]	Start TVD [ft]	End TVD [ft]	Start N/S [ft]	Start E/W [ft]	End N/S [ft]	End E/W [ft]
13.5in Open Hole	17.00	1400.00	1383.00	17.00	1400.00	0.00	0.00	0.00	0.00
9.625in Casing Surface	17.00	1400.00	1383.00	17.00	1400.00	0.00	0.00	0.00	0.00
7.875in Open Hole	1400.00	12253.48	10853.48	1400.00	7112.00	0.00	0.00	-5280.18	-379.36
5.5in Casing Production	17.00	12253.48	12236.48	17.00	7112.00	0.00	0.00	-5280.18	-379.36

TARGETS										
Name	MD [ft]	TVD [ft]	North [ft]	East [ft]	Grid East [US ft]	Grid North [US ft]	Latitude	Longitude	Shape	
GE POWERS 29N-26HZ_SHL		4907.00	0.00	0.00	1742182.04	14574369.46	40°07'48.878"N	104°38'09.334"W	point	
SEC.23-T2N-R65W		4907.00	0.40	-60.10	1742121.95	14574369.62	40°07'48.882"N	104°38'10.108"W	polygon	
SEC.26-T2N-R65W		4907.00	0.40	-60.10	1742121.95	14574369.62	40°07'48.882"N	104°38'10.108"W	polygon	
1) GE POWERS 29N-26HZ_BHL	12253.48	7112.00	-5280.18	-379.36	1741824.31	14569087.79	40°06'56.678"N	104°38'14.219"W	point	

SURVEY PROGRAM -				
Ref Wellbore: GE POWERS 29N-26HZ PWB		Ref Wellpath: GE POWERS 29N-26HZ (PERMIT REV-2) PWP		
Start MD [ft]	End MD [ft]	Positional Uncertainty Model	Log Name/Comment	Wellbore
17.00	12253.48	ISCWSA MWD, Rev. 2, axial magnetic correction (Standard) (MagVAR IFR Wattenberg)		GE POWERS 29N-26HZ PWB

REFERENCE WELLPATH IDENTIFICATION			
Operator	KERR-MCGEE OIL & GAS ONSHORE LP_1	Slot	SLOT#03 GE POWERS 29N-26HZ
Area	Compass Import	Well	GE POWERS 29N-26HZ
Field	WELD COUNTY (UTM (ZONE 13)/NAD83/TRUE NORTH)	Wellbore	GE POWERS 29N-26HZ PWB
Facility	2N-65W-23 Offsets		

WELLPATH COMMENTS					
MD [ft]	Inclination [°]	Azimuth [°]	TVD [ft]	Comment	
1350.00	0.000	278.000	1350.00	Fox Hills Marker	
4532.60	0.000	180.133	4491.00	Sussex	
6430.60	0.000	180.133	6389.00	Sharon Springs	
6998.14	40.349	180.133	6924.00	Niobrara Top	
7079.40	48.475	180.133	6982.00	Niobrara B Bench	
7214.79	62.014	180.133	7059.00	Niobrara C Bench	
7496.33	90.168	180.133	7126.00	Top of Production	

DESIGN COMMENTS					
MD [ft]	Inclination [°]	Azimuth [°]	TVD [ft]	Comment	
17.00	0.000	278.000	17.00	TIE-ON	
1500.00	0.000	278.000	1500.00	BEGIN NUDGE	
2300.00	16.000	278.000	2289.64	END NUDGE	
2839.25	16.000	278.000	2808.00	BEGIN DROP	
3639.25	0.000	180.133	3597.64	END DROP	
6594.65	0.000	180.133	6553.04	KOP, BUILD @ 10"/100'	
7496.33	90.169	180.133	7126.00	LANDING POINT	
12253.48	90.169	180.133	7112.00	TOTAL DEPTH	