

WPX Energy Rocky Mountain LLC-EBUS

GM 413-21

Cyclone 17

Post Job Summary

Cement Surface Casing

Date Prepared: 01/09/2015

Job Date: 01/02/2015

Submitted by: Keven Nye – Grand Junction Cement Engineer

The Road to Excellence Starts with Safety

Sold To #: 300721	Ship To #: 3205577	Quote #: 0021979388	Sales Order #: 0901988846
Customer: WPX ENERGY ROCKY MOUNTAIN LLC-EBUS		Customer Rep: SCOTT GEARY	
Well Name: PUCKETT	Well #: GM 413-21	API/UWI #: 05-045-22188-00	
Field: GRAND VALLEY	City (SAP): PARACHUTE	County/Parish: GARFIELD	State: COLORADO
Legal Description: 28-6S-96W-1270FNL-1078FWL			
Contractor: CYCLONE		Rig/Platform Name/Num: CYCLONE 17	
Job BOM: 7521			
Well Type: DIRECTIONAL GAS			
Sales Person: HALAMERICA\HB50180		Srcv Supervisor: Craig Kukus	
Job			

Formation Name			
Formation Depth (MD)	Top		Bottom
Form Type	BHST		
Job depth MD	1481ft	Job Depth TVD	1481 FT
Water Depth		Wk Ht Above Floor	4 FT
Perforation Depth (MD)	From		To

Well Data

Description	New / Used	Size in	ID in	Weight lbm/ft	Thread	Grade	Top MD ft	Bottom MD ft	Top TVD ft	Bottom TVD ft
Casing		9.625	8.921	36			0	1481		0
Open Hole Section			13.5				0	1500		0

Tools and Accessories

Type	Size in	Qty	Make	Depth ft	Type	Size in	Qty	Make
Guide Shoe	9.625	1		1481	Top Plug	9.625	1	HES
Float Shoe	9.625				Bottom Plug	9.625		HES
Float Collar	9.625	1		1437	SSR plug set	9.625		HES
Insert Float	9.625				Plug Container	9.625	1	HES
Stage Tool	9.625				Centralizers	9.625		HES

Miscellaneous Materials

Gelling Agt	Conc	Surfactant	Conc	Acid Type	Qty	Conc
Treatment Fld	Conc	Inhibitor	Conc	Sand Type	Size	Qty

Fluid Data

Stage/Plug #: 1									
Fluid #	Stage Type	Fluid Name	Qty	Qty UoM	Mixing Density lbm/gal	Yield ft ³ /sack	Mix Fluid Gal	Rate bbl/min	Total Mix Fluid Gal
1	Fresh Water	Fresh Water	20	bbl	8.34			4	
Fluid #	Stage Type	Fluid Name	Qty	Qty UoM	Mixing Density lbm/gal	Yield ft ³ /sack	Mix Fluid Gal	Rate bbl/min	Total Mix Fluid Gal
2	VariCem GJ5	VARICEM (TM) CEMENT	210	sack	12.3	2.45		8	14.17
14.10 Gal			FRESH WATER						

Fluid #	Stage Type	Fluid Name	Qty	Qty UoM	Mixing Density lbm/gal	Yield ft ³ /sack	Mix Fluid Gal	Rate bbl/mi n	Total Mix Fluid Gal	
3	VariCem GJ5	VARICEM (TM) CEMENT	170	sack	12.8	2.18		8	12.11	
12.05 Gal		FRESH WATER								
Fluid #	Stage Type	Fluid Name	Qty	Qty UoM	Mixing Density lbm/gal	Yield ft ³ /sack	Mix Fluid Gal	Rate bbl/mi n	Total Mix Fluid Gal	
4	Fresh Water Displacement	Fresh Water Displacement	113	bbl	8.34			10 / 4		
Cement Left In Pipe		Amount	44 ft		Reason			Shoe Joint		
Mix Water:		pH ##	Mix Water Chloride: ## ppm		Mix Water Temperature:			45 °F °C		
Cement Temperature:		## °F °C		Plug Displaced by: 8.3 lb/gal kg/m ³ XXXX		Disp. Temperature:			45 °F °C	
Plug Bumped?		Yes		Bump Pressure: #### psi MPa		Floats Held?			Yes	
Cement Returns:		41 bbl m ³		Returns Density: ## lb/gal kg/m ³		Returns Temperature:			## °F °C	
Comment										

Summary Report



Crew: _____

Sales Order #: 0901988846
WO #: 0901988846
PO/AFE #: NA

Job Start Date: 1/2/2015

Customer:	WPX ENERGY ROCKY MOUNTAIN Field:	GRAND VALLEY	Job Type:	CMT SURFACE	
	LLC-EBUS			CASING BOM	
UWI / API Number:	05-045-22188-00	County/Parish:	GARFIELD	Service Supervisor:	Craig Kukus
Well Name:	PUCKETT	State:	COLORADO		
Well No:	GM 413-21	Latitude:	39.498989	Cust Rep Name:	SCOTT GEARY
		Longitude:	-108.119339	Cust Rep Phone #:	9706403973
		Sect / Twn / Rng:	28/6/96		

Remarks:		
The Information Stated Herein Is Correct	Customer Representative Signature	Date
	Customer Representative Printed Name	
	<i>William S Geary</i>	1/2/14
	William S Geary	

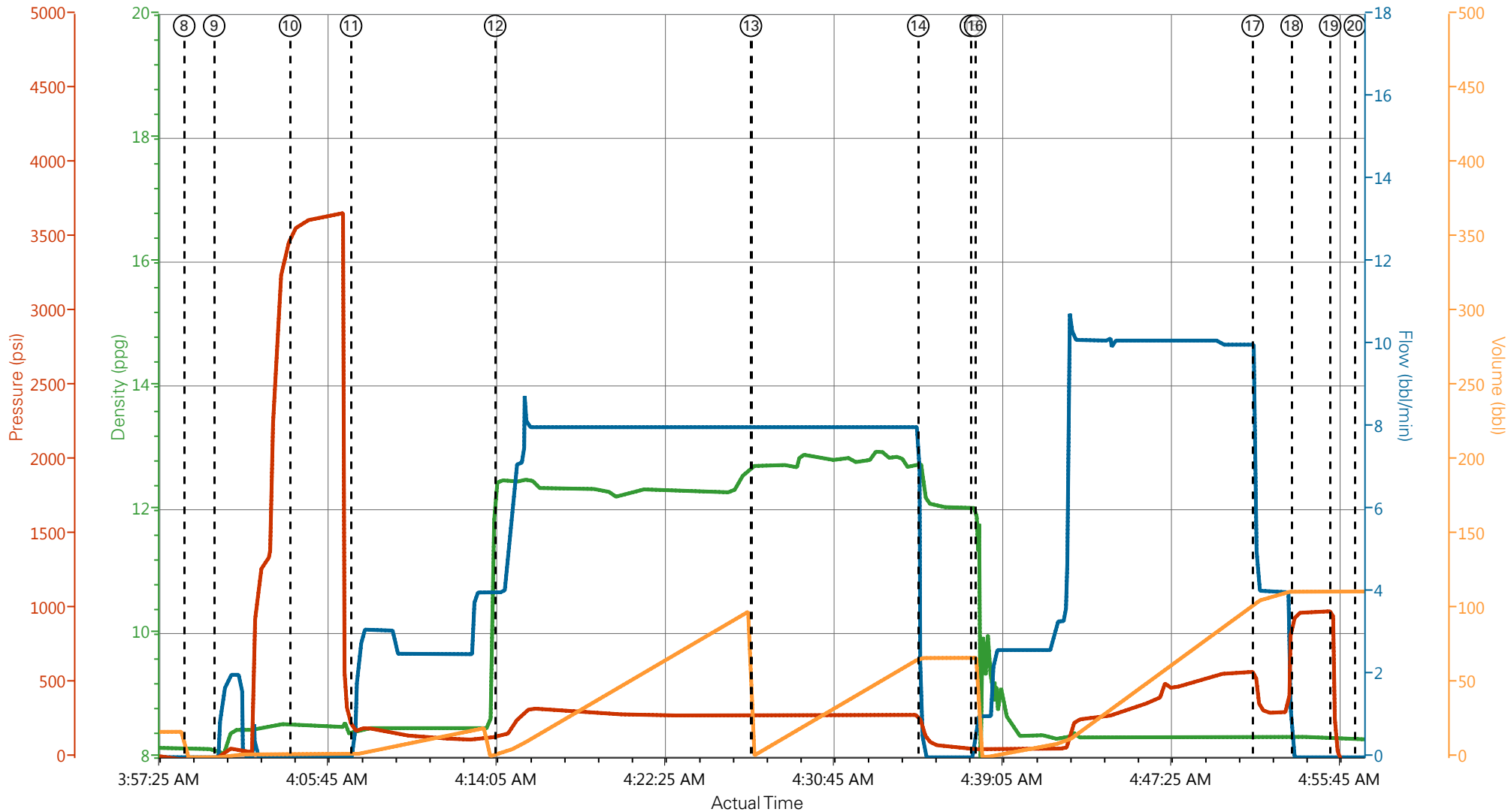
ROUTING CODE: NXEPPARACH
 BLACK DRILLING CELL
 PAD: GM 11-28 WELL: GM 413-21
 DATE: 1/2/15 RIG: CYCLONE. 17
 COST CODE: 8300 8400
 NAME: William S. Geary
 Signature: *William S Geary*

3.1 Job Event Log

Type	Seq. No.	Activity	Graph Label	Date	Time	Source	DH Density (ppg)	Comb Pump Rate (bbl/min)	PS Pump Press (psi)	Pump Stg Tot (bbl)	Comment
Event	1	Call Out	Call Out	1/1/2015	21:00:00	USER					CREW CALL OUT
Event	2	Depart from Service Center or Other Site	Depart from Service Center or Other Site	1/1/2015	23:30:00	USER					DEPART SERVICE CENTER SAFETY MEETING ALL HES CREW PRESENT
Event	3	Arrive At Loc	Arrive At Loc	1/2/2015	01:00:00	USER					ARRIVE EARLY ON LOC RIG RUNNING CSG / HES EQUIPMENT ON LOC 1 EA CEMENT PUMP UNIT 2 EA 660 BULK UNITS 1 EA SERVICE PICK UP UNIT
Event	4	Assessment Of Location Safety Meeting	Assessment Of Location Safety Meeting	1/2/2015	01:30:00	USER					ASSESMENT OF LOC
Event	5	Pre-Rig Up Safety Meeting	Pre-Rig Up Safety Meeting	1/2/2015	02:45:00	USER					PRE-RIG UP SAFETY MEETING AL HES CREW PRESENT
Event	6	Rig-Up Equipment	Rig-Up Equipment	1/2/2015	02:50:00	USER					RIG UP TO STAND PIPE AND FRESH WATER SUCTION HOSES
Event	7	Pre-Job Safety Meeting	Pre-Job Safety Meeting	1/2/2015	03:40:00	USER	0.00	0.00	-4.00	0.0	PRE-JOB SAFETY MEETING ALL RIG PERSONEL AND HES CREW PRESENT
Event	8	Start Job	Start Job	1/2/2015	03:58:49	COM6	8.14	0.00	-11.00	0.0	START JOB: TD 1500 FT TP 1481 FT SJT 44 FT OH 13.5 IN WF/WT 10.1# CSG 9 5/8 IN H-40 32.3#
Event	9	Prime Pumps	Prime Pumps	1/2/2015	04:00:18	USER	8.11	0.00	-2.00	2.0	PRIME LINES WITH FRESH WATER
Event	10	Test Lines	Test Lines	1/2/2015	04:04:03	COM6	8.52	0.00	3546.00	0.1	PRESSURE TEST LINES 5 TH GEAR STALL OUT AT 1270 PSI TEST TO 3500 PSI
Event	11	Break Formation	Break Formation	1/2/2015	04:07:04	COM6	8.40	0.00	178.00	20	PUMP 20 BBLs H2O SPACER AHEAD
Event	12	Pump Lead Cement	Pump Lead Cement	1/2/2015	04:14:11	COM6	12.47	4.00	146.00	92	PUMP 210 SKS LEAD

											CEMENT AT 12.3 PPG 2.45Y 14.17 GAL/SKS RETURNS GOOD AND CEMENT DIP GOOD
Event	13	Pump Tail Cement	Pump Tail Cement	1/2/2015	04:26:49	COM6	12.71	8.00	279.00	67	PUMP 170 SKS TAIL CEMENT AT 12.8 PPG 2.18 Y 12.11 GAL/SKS RETURNS GOOD CEMENT DIP GOOD
Event	14	Shutdown	Shutdown	1/2/2015	04:35:05	USER	12.71	1.90	214.00	181.1	SHUT DOWN END CEMENT / READY TUB TO WASH UP ON TOP OF PLUG
Event	15	Drop Top Plug	Drop Top Plug	1/2/2015	04:37:41	COM6	12.03	0.00	55.00	0	DROP TOP PLUG / PLUG AWAY
Event	16	Pump Displacement	Pump Displacement	1/2/2015	04:37:54	COM6	11.59	1.00	55.00	104	PUMP H2O DISPLACEMENT / RIG RECEPICATED DURING DISPLACEMENT AT 12 FT STROKES
Event	17	Slow Rate	Slow Rate	1/2/2015	04:51:37	USER	8.33	7.50	531.00	104.9	SLOW RATE TO 4 BBL MIN
Event	18	Bump Plug	Bump Plug	1/2/2015	04:53:32	COM6	8.33	0.00	945.00	113	PLUG LANDED AT 300 PSI BUMP TO 900 PSI
Event	19	Check Floats	Check Floats	1/2/2015	04:55:26	USER	8.32	0.00	766.00	113	CHECK FLOATS / FLOATS HELD GOT BACK TO TANKS .5 BBLS
Event	20	End Job	End Job	1/2/2015	04:56:40	COM6	8.29	0.00	-47.00	294.1	END JOB / HAD RETURNS THRU OUT THE JOB AND GOT 41 BBLS CEMENT BACK TO SURFACE
Event	21	Pre-Rig Down Safety Meeting	Pre-Rig Down Safety Meeting	1/2/2015	05:02:34	USER	8.28	10.90	-31.00	0	PRE-RIG DOWN SAFETY MEETING ALL HES CREW PRESENT
Event	22	Rig-Down Equipment	Rig-Down Equipment	1/2/2015	05:10:00	USER					RIG FLOOR DOWN AND WASH UP PUMP / RIG GROUND IRON DOWN
Event	23	Depart Location	Depart Location	1/2/2015	05:55:00	USER					DEPART LOC SAFETY MEETING ALL HES CREW PRESENT
Event	24	Comment	Comment	1/2/2015	06:00:00	USER					THANK YOU FOR USING HALLIBURTON CEMENTING SERVICES AND THE CREW

WPX ENERGY ROCKY MOUNTAIN CYCLONE 17 PUCKETT GM 413-21 CEMENT SURFACE CSG JOB



DH Density (ppg) Comb Pump Rate (bbl/min) PS Pump Press (psi) Pump Stg Tot (bbl)

- | | | | | | |
|--|-----------------------------|--------------------|---------------------|----------------|-------------------------------|
| ① Call Out | ⑤ Pre-Rig Up Safety Meeting | ⑨ Prime Pumps | ⑬ Pump Tail Cement | ⑰ Slow Rate | ⑳ Pre-Rig Down Safety Meeting |
| ② Depart from Service Center or Other Site | ⑥ Rig-Up Equipment | ⑩ Test Lines | ⑭ Shutdown | ⑱ Bump Plug | ㉑ Rig-Down Equipment |
| ③ Arrive At Loc | ⑦ Pre-Job Safety Meeting | ⑪ Break Formation | ⑮ Drop Top Plug | ㉒ Check Floats | ㉓ Depart Location |
| ④ Assessment Of Location Safety Meeting | ⑧ Start Job | ⑫ Pump Lead Cement | ⑯ Pump Displacement | ㉔ End Job | ㉕ Comment |

▼ HALLIBURTON | iCem® Service

Created: 2015-01-02 01:54:06, Version: 3.0.121

Edit

Customer: WPX ENERGY ROCKY MOUNTAIN LLC-EBUS

Job Date: 1/2/2015 3:09:07 AM

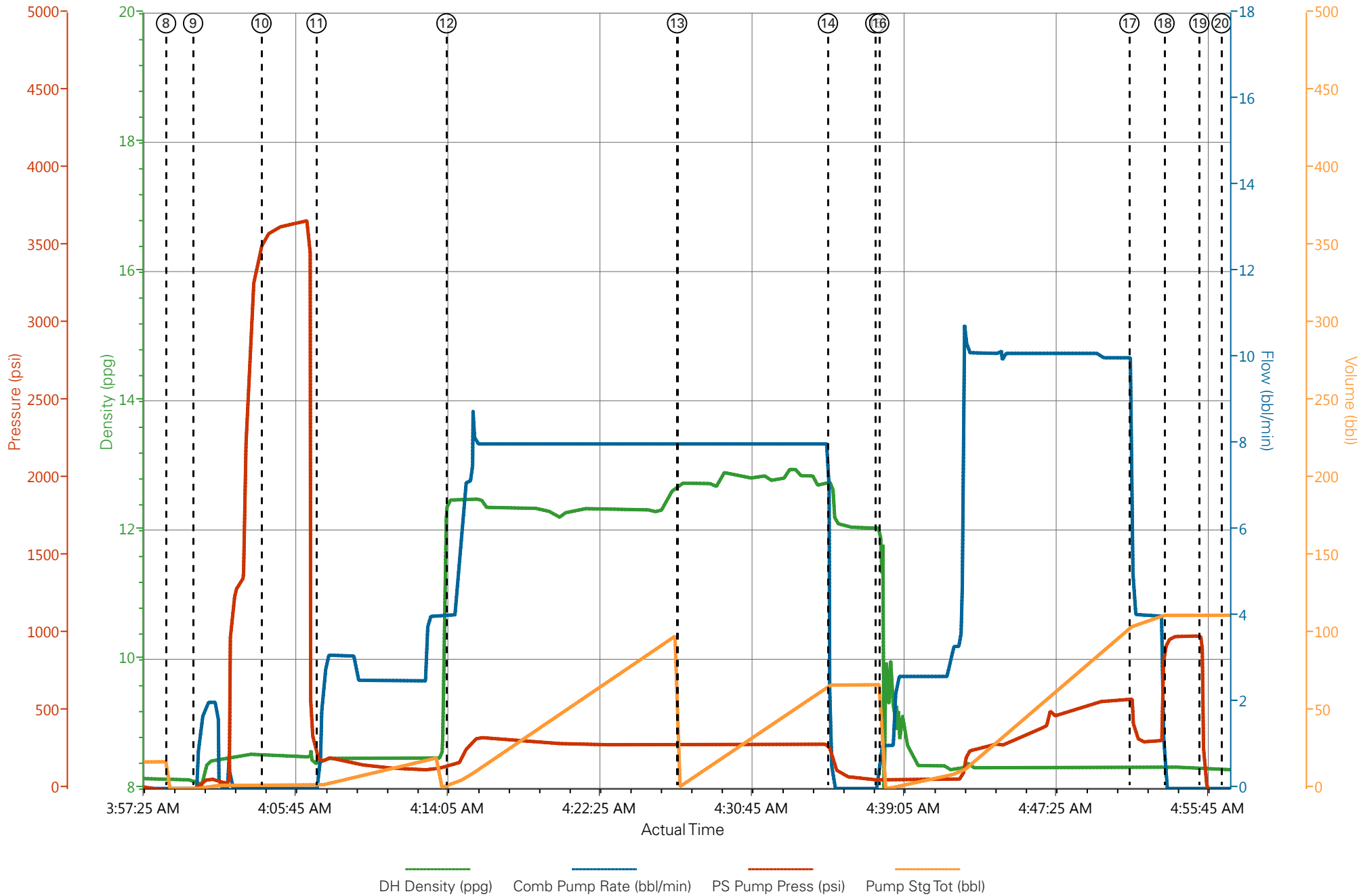
Well: 413-21

Representative: CRAIG KUKUS

Sales Order #: 0901988846

ELITE 4 / OPERATOR: ROGER LAULAINEN

WPX ENERGY ROCKY MOUNTAIN CYCLONE 17 PUCKETT GM 413-21 CEMENT SURFACE CSG JOB



DH Density (ppg) Comb Pump Rate (bbl/min) PS Pump Press (psi) Pump Stg Tot (bbl)

HALLIBURTON

Water Analysis Report

Company: WPX ENERGY
Submitted by: CRAIG KUKUS
Attention: _____
Lease: PUCKETT
Well #: GM 413-21

Date: 1/2/2015
Date Rec.: 1/2/2015
S.O.#: 901988846
Job Type: SURFACE

Specific Gravity	<i>MAX</i>	0
pH	<i>8</i>	7
Potassium (K)	<i>5000</i>	200 Mg / L
HARDNESS	<i>500</i>	425 Mg / L
Iron (FE2)	<i>300</i>	0 Mg / L
Chlorides (Cl)	<i>3000</i>	0 Mg / L
Sulfates (SO ₄)	<i>1500</i>	<200 Mg / L
Chlorine (Cl ₂)		0 Mg / L
Temp	<i>40-80</i>	45 Deg
Total Dissolved Solids		410 Mg / L

Respectfully: CRAIG KUKUS
Title: CEMENTING SUPERVISOR
Location: Grand Junction, CO

NOTICE:

This report is limited to the described sample tested. Any person using or relying on this report agrees that Halliburton shall not be liable for any loss or damage whether due to act or omission resulting from such report or its

Sales Order #: 0901988846	Line Item: 10	Survey Conducted Date: 1/2/2015
Customer: WPX ENERGY ROCKY MOUNTAIN LLC-EBUS		Job Type (BOM): CMT SURFACE CASING BOM
Customer Representative: SCOTT GEARY		API / UWI: (leave blank if unknown) 05-045-22188-00
Well Name: PUCKETT		Well Number: 0080241749
Well Type: DIRECTIONAL GAS	Well Country: USA	
H2S Present: No	Well State: COLORADO	Well County: GARFIELD

Dear Customer,

We hope that you were satisfied with the service quality of this job performed by Halliburton. It is the aim of our management and service personnel to deliver equipment and service of a standard unmatched in the service sector of the energy industry.

Please take the time to let us know if our performance met with your satisfaction. Please be as critical as possible to ensure we constantly improve our service. Your comments are of great value to us and are intended for the exclusive use of Halliburton.

CUSTOMER SATISFACTION SURVEY

CATEGORY	CUSTOMER SATISFACTION RESPONSE	
Survey Conducted Date	The date the survey was conducted	1/2/2015
Survey Interviewer	The survey interviewer is the person who initiated the survey.	HX19742
Customer Participation	Did the customer participate in this survey? (Y/N)	Yes
Customer Representative	Enter the Customer representative name	SCOTT GEARY
HSE	Was our HSE performance satisfactory? Circle Y or N	Yes
Equipment	Were you satisfied with our Equipment? Circle Y or N	Yes
Personnel	Were you satisfied with our people? Circle Y or N	Yes
Customer Comment	Customer's Comment	

CUSTOMER SIGNATURE

Sales Order #: 0901988846	Line Item: 10	Survey Conducted Date: 1/2/2015
Customer: WPX ENERGY ROCKY MOUNTAIN LLC-EBUS		Job Type (BOM): CMT SURFACE CASING BOM
Customer Representative: SCOTT GEARY		API / UWI: (leave blank if unknown) 05-045-22188-00
Well Name: PUCKETT		Well Number: 0080241749
Well Type: DIRECTIONAL GAS	Well Country: USA	
H2S Present: No	Well State: COLORADO	Well County: GARFIELD

KEY PERFORMANCE INDICATORS

General	
Survey Conducted Date	1/2/2015
The date the survey was conducted	

Cementing KPI Survey	
Type of Job	0
Select the type of job. (Cementing or Non-Cementing)	
Select the Maximum Deviation range for this Job	Vertical
What is the highest deviation for the job you just completed? This may not be the maximum well deviation.	
Total Operating Time (hours)	2
Total Operating Hours Including Rig-up, Pumping, Rig-down. Enter in decimal format.	
HSE Incident, Accident, Injury	No
HSE Incident, Accident, Injury. This should be recordable incidents only.	
Was the job purpose achieved?	Yes
Was the job delivered correctly as per customer agreed design?	
Operating Hours (Pumping Hours)	1
Total number of hours pumping fluid on this job. Enter in decimal format.	
Customer Non-Productive Rig Time (hrs)	0
Lost time due to Halliburton in the start, execution, or completion of an ordered service or product, or delays in a follow-on service. Enter in decimal format. 0 if none.	
Type of Rig Classification Job Was Performed	Drilling Rig (Portable)
Type Of Rig (classification) Job Was Performed On	
Number Of JSAs Performed	6
Number Of Jsas Performed	
Number of Unplanned Shutdowns	0
Unplanned shutdown is when injection stops for any period of time.	
Was this a Primary Cement Job (Yes / No)	Yes

Sales Order #: 0901988846	Line Item: 10	Survey Conducted Date: 1/2/2015
Customer: WPX ENERGY ROCKY MOUNTAIN LLC-EBUS		Job Type (BOM): CMT SURFACE CASING BOM
Customer Representative: SCOTT GEARY		API / UWI: (leave blank if unknown) 05-045-22188-00
Well Name: PUCKETT		Well Number: 0080241749
Well Type: DIRECTIONAL GAS	Well Country: USA	
H2S Present: No	Well State: COLORADO	Well County: GARFIELD

Primary Cement Job= Casing job, Liner job, or Tie-back job.	
Did We Run Wiper Plugs? Did We Run Top And Bottom Casing Wiper Plugs?	Top
Mixing Density of Job Stayed in Designed Density Range (0-100%) Density Range defined as +/- .20 ppg. Calculation: Total BBLs cement mixed at designed density divided by total BBLs of cement multiplied by 100	99
Was Automated Density Control Used? Was Automated Density Control (ADC) Used ?	Yes
Pump Rate (percent) of Job Stayed At Designed Pump Rate Pump Rate range defined as +/- 1bbl/min. Calculation: Total BBLs of fluid pumped at the designed rate divided by Total BBLs of fluid pumped, multiplied by 100	99
Nbr of Remedial Sqz Jobs Rqd - Competition Number Of Remedial Squeeze Jobs Required After Primary Job Performed By Competition	0
Nbr of Remedial Plug Jobs Rqd - HES Number Of Remedial Plug Jobs Needed After Primary Plug Pumped By HES	0
Nbr of Remedial Sqz Jobs Rqd - HES Number Of Remedial Squeeze Jobs Required After Primary Job Performed By HES	0