

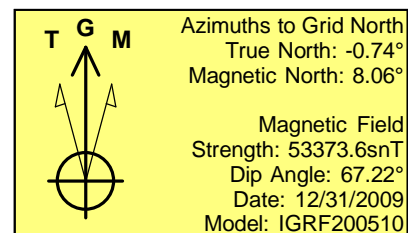
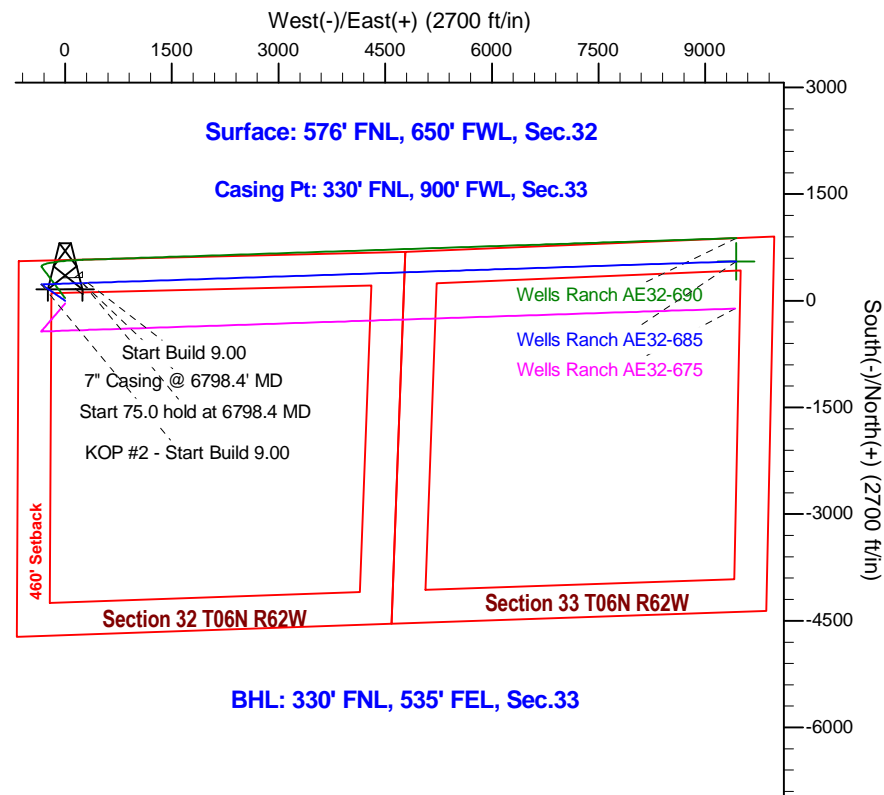
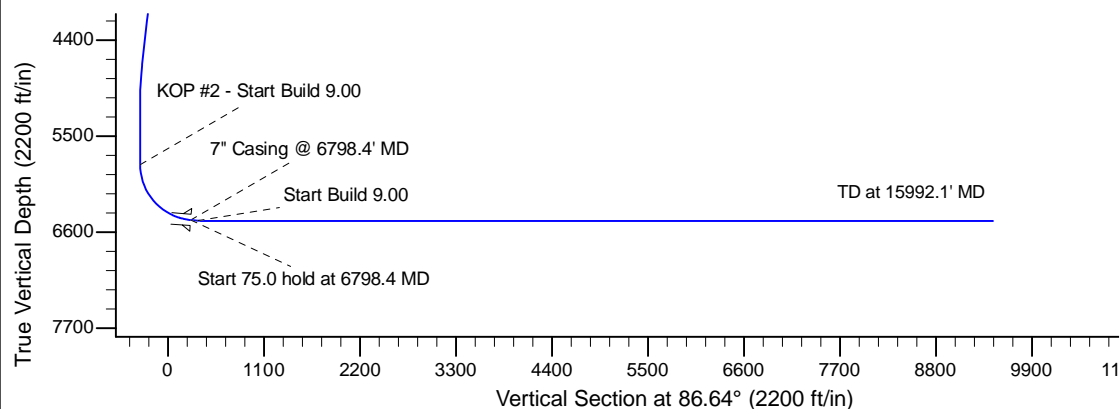
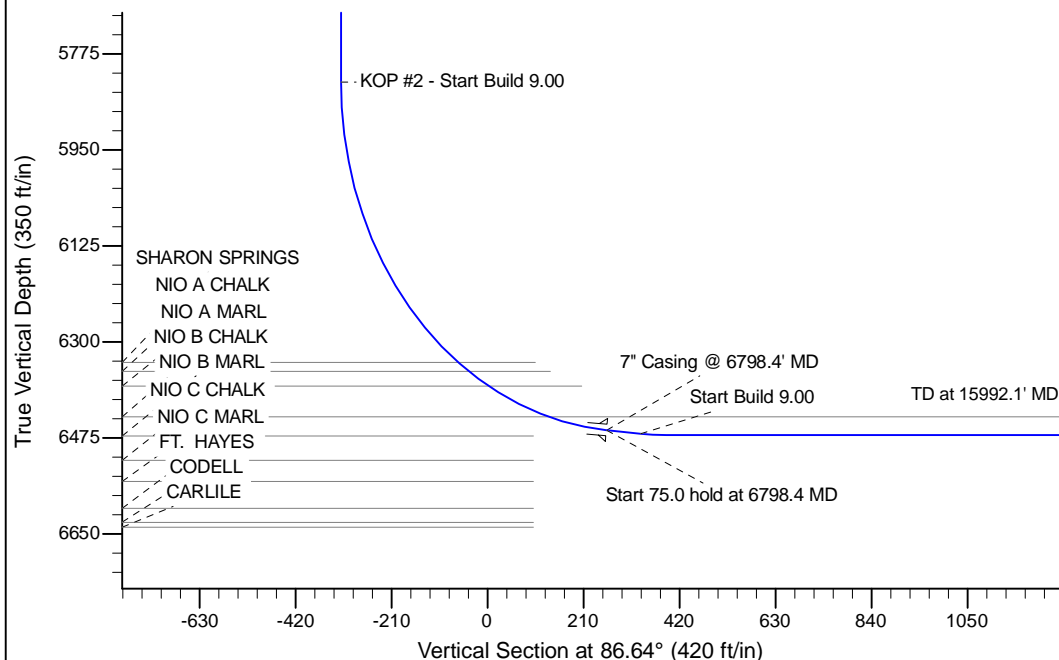
Project: Wattenberg Field  
 Site: AE (Sec.32-T06N-R62W) Weld County, CO  
 Well: Wells Ranch AE32-685  
 Wellbore: Original Drilling  
 Design: APD - Rev 0

# Northern Region Drilling - Working

Geodetic System: US State Plane 1983  
 Datum: North American Datum 1983  
 Ellipsoid: GRS 1980  
 Zone: Colorado Northern Zone  
 System Datum: Mean Sea Level

## SECTION DETAILS

Sec	MD	Inc	Azi	TVD	+N/-S	+E/-W	Dleg	TFace	Vsect	Target
1	0.0	0.00	0.00	0.0	0.0	0.0	0.00	0.00	0.0	
2	1800.0	0.00	0.00	1800.0	0.0	0.0	0.00	0.00	0.0	
3	2200.3	8.01	304.47	2199.0	15.8	-23.0	2.00	304.47	-22.1	
4	4716.8	8.01	304.47	4691.0	214.2	-312.0	0.00	0.00	-298.9	
5	5117.1	0.00	0.00	5090.0	230.0	-335.0	2.00	180.00	-321.0	
6	5854.0	0.00	0.00	5826.8	230.0	-335.0	0.00	0.00	-321.0	
7	6798.4	85.00	88.10	6461.0	249.2	245.8	9.00	88.10	260.0	
8	6873.4	85.00	88.10	6467.6	251.7	320.5	0.00	0.00	334.7	
9	6929.0	90.00	88.10	6470.0	253.6	375.9	9.00	0.00	390.2	
10	15992.1	90.00	88.10	6470.0	553.6	9434.1	0.00	0.00	9450.3	Wells Ranch AE32-685 BHL 330'FNL, 535'FEL



WELL DETAILS: Wells Ranch AE32-685					
Ground Level: 4748.0					
	Northing	Easting	Latitude	Longitude	
0.0	0.0	1408416.48	3318870.00	40.448850	-104.354230

Plan: APD - Rev 0 (Wells Ranch AE32-685/Original Drilling)

Created By: Shailey Jewell Date: 9:39, March 26 2015

OK to submit with 2A as per Noble Drilling  
 3/26/2015 9:47