

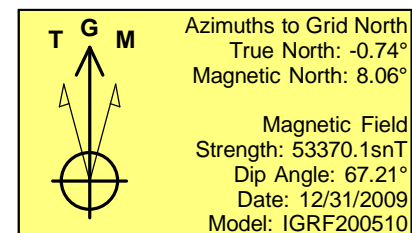
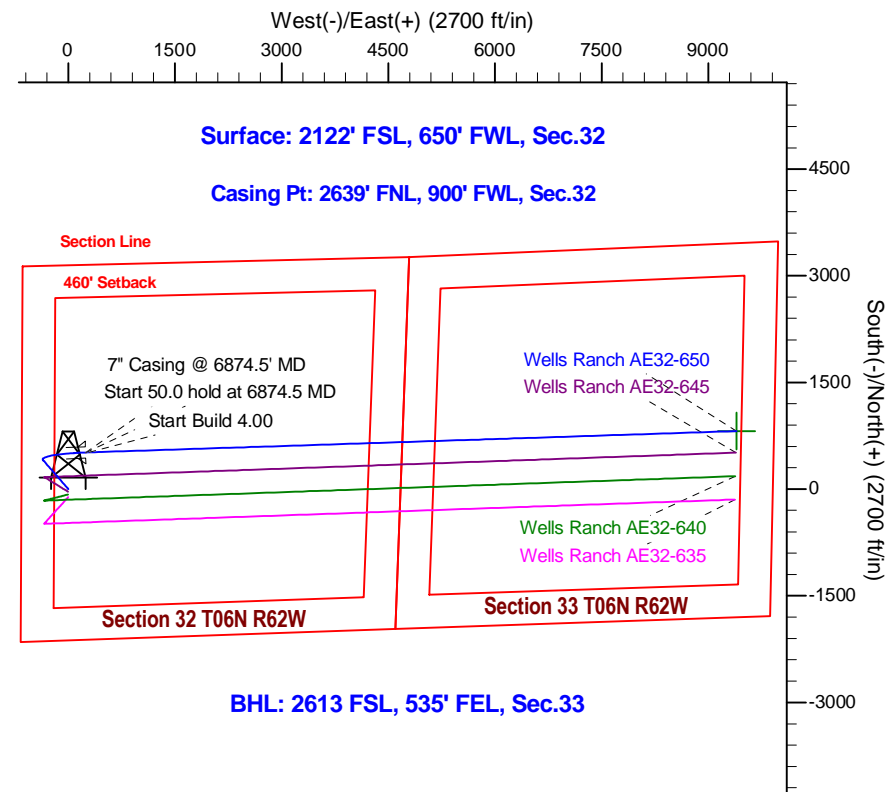
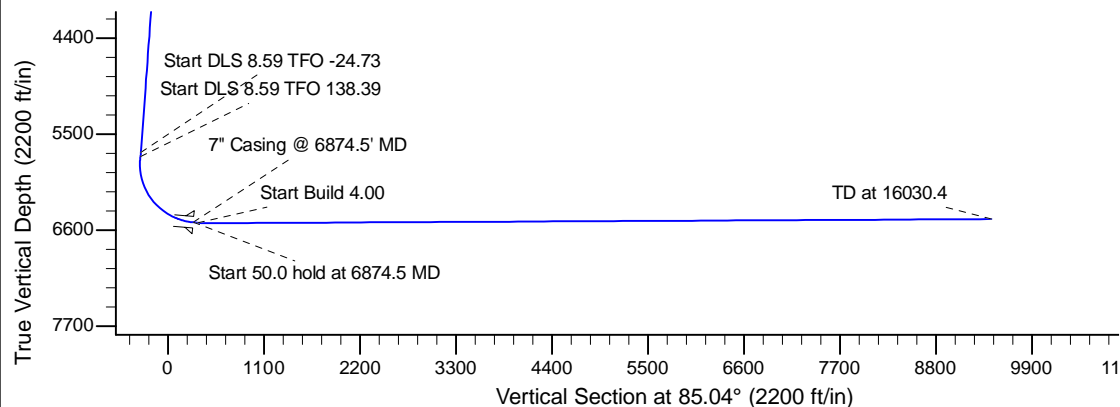
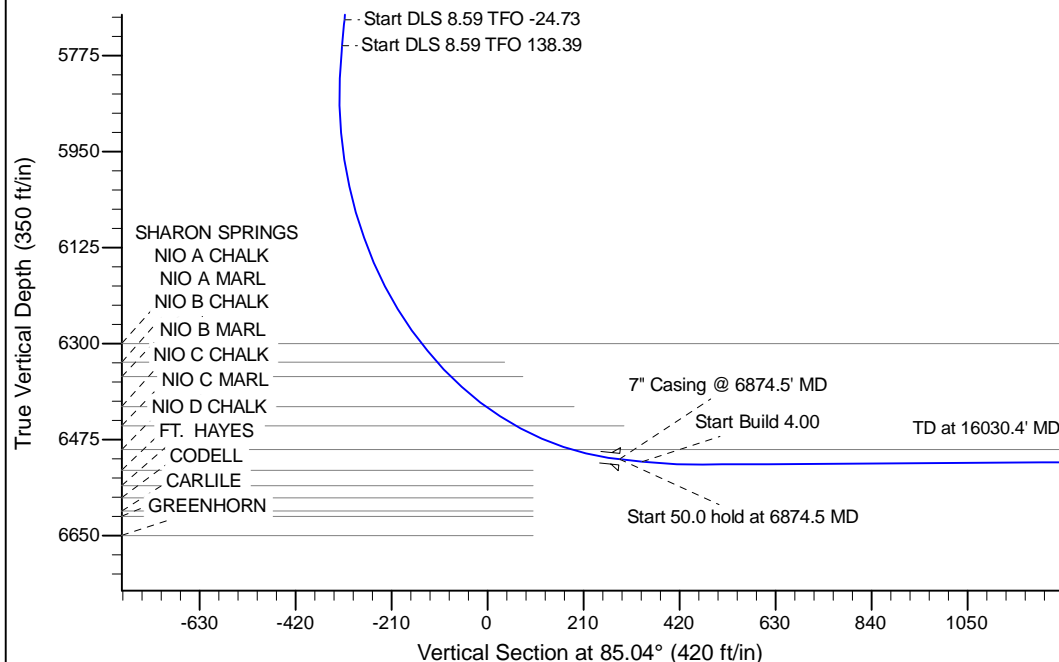
Project: Wattenberg Field
 Site: AE (Sec.32-T06N-R62W) Weld County, CO
 Well: Wells Ranch AE32-650
 Wellbore: Original Drilling
 Design: APD - Rev 0

Northern Region Drilling - Working

Geodetic System: US State Plane 1983
 Datum: North American Datum 1983
 Ellipsoid: GRS 1980
 Zone: Colorado Northern Zone
 System Datum: Mean Sea Level

SECTION DETAILS

Sec	MD	Inc	Azi	TVD	+N/-S	+E/-W	Dleg	TFace	VFace	Target
1	0.0	0.00	0.00	0.0	0.0	0.0	0.00	0.00	0.0	
2	1200.0	0.00	0.00	1200.0	0.0	0.0	0.00	0.00	0.0	
3	1550.0	7.00	319.00	1549.1	16.1	-14.0	2.00	319.00	-12.6	
4	5742.1	7.00	319.00	5710.0	401.7	-349.2	0.00	0.00	-313.1	
5	5790.0	10.87	309.84	5757.3	406.8	-354.6	8.59	-24.73	-318.1	
6	6874.5	85.00	88.12	6510.8	515.0	245.0	8.59	138.39	288.6	
7	6924.5	85.00	88.12	6515.2	516.6	294.8	0.00	0.00	338.4	
8	7057.0	90.30	88.12	6520.6	521.0	427.1	4.00	0.00	470.5	
9	16030.4	90.30	88.12	6473.6	815.4	9395.4	0.00	0.00	9430.7	Wells Ranch AE32-650 BHL 2613'FSL, 535'FEL



WELL DETAILS: Wells Ranch AE32-650				
Ground Level: 4722.0				
0.0	0.0	1405840.51	3318858.74	40.441780
Northing		Easting		Longitude
				-104.354390

Plan: APD - Rev 0 (Wells Ranch AE32-650/Original Drilling)

Created By: Shailey Jewell Date: 16:18, March 24 2015

OK to submit with 2A as per Noble Drilling
3/24/2015 4:24