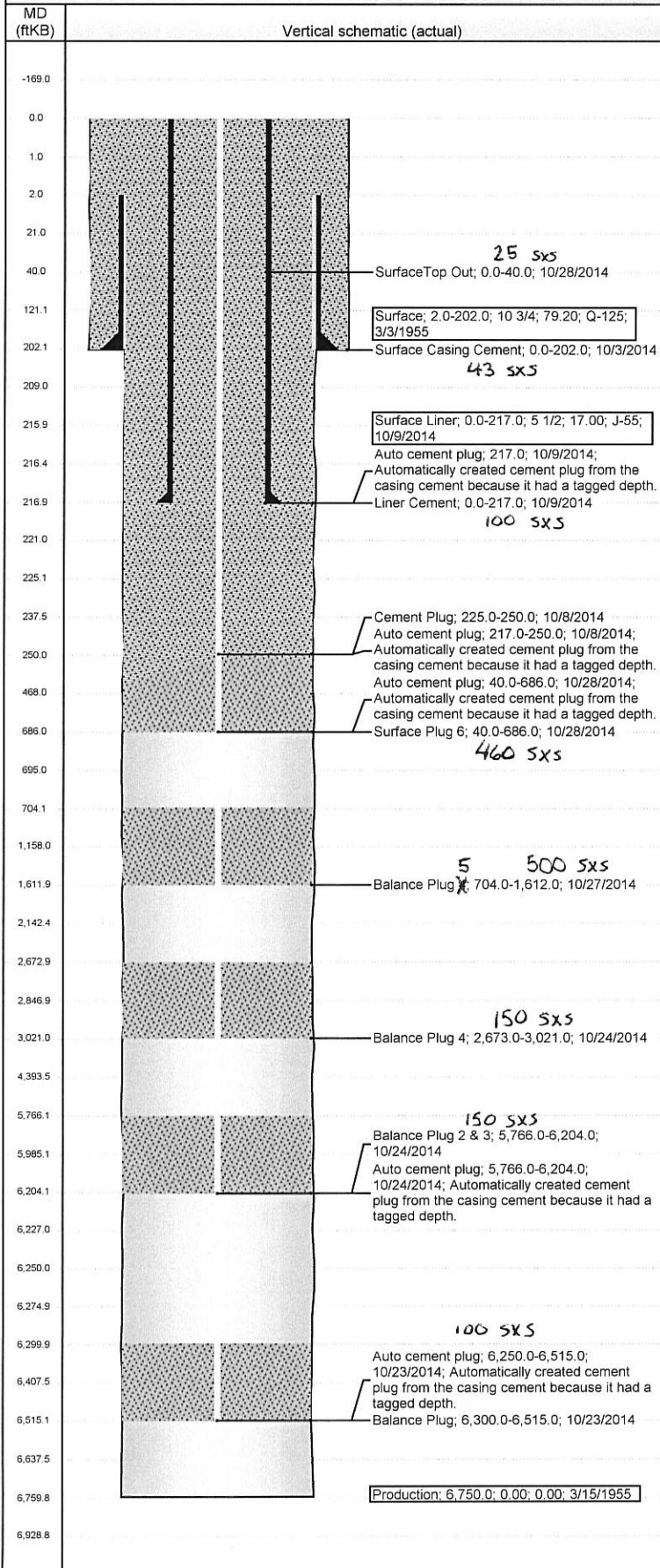


Well Name: GOVERNMENT 43-14

VERTICAL - ORIGINAL HOLE, 6/3/2015 7:34:14 AM



## Well Header

API 05-123-05656	Business Unit DJ BASIN	District 15	Well Config VERTICAL
Original KB Elevation (ft)	KB - GL / MSL (ftKB)	Spud Date	P & A Date 10/28/2014

Comment

## Directions To Well

CO HWY 14 & WCR 105, North to WCR 104, East to WCR 119, North 0.5 mi , West 0.2 mi Into

Current PBTD (ftKB)

## Surface Location (Congressional)

Quarter 1	Quarter 2	Quarter 3	Quarter 4	Section	Township	Twnshp N...	Range	Rng E/W Dir
				14	9	N	59	W

## Bottom Hole Location

North-South Distance (ft)	From N or S Line	East-West Distance (ft)	From E or W Line

## Plug Back Total Depths

Date	Depth (ftKB)	Method	Com

## Wellbore Sections

Section Des	Size (in)	Act Top, MD (ftKB)	Act Btm, MD (ftKB)
SURFACE	13 1/2	0.0	202.0
PRODUCTION	9 7/8	202.0	6,760.0

## Zone Statuses

Zone Name	Status Date	Status	Fluid Type	Job	Prod Method
NIOBRARA	10/28/2014	P&A	Cement	HORIZONTAL WELL PREP, 9/30/2014 06:00	

## Casing Strings

Csg Des	Run Date	OD (in)	Wt/Len (lb/ft)	Grade	Top, MD (ftKB)	MD (ftKB)
Surface	3/3/1955	10 3/4	79.20	Q-125	2.0	202.0
Surface Liner	10/9/2014	5 1/2	17.00	J-55	0.0	217.0
Production	3/15/1955					6,750.0

## Cement

Des	Top (ftKB)	Btm (ftKB)
Surface Casing Cement	0.0	202.0
Cement Plug	225.0	250.0
Liner Cement	0.0	217.0
Balance Plug	6,300.0	6,515.0
Balance Plug 2 & 3	5,766.0	6,204.0
Balance Plug 4	2,673.0	3,021.0
Balance Plug 5	704.0	1,612.0
Surface Top Out	0.0	40.0
Surface Plug 6	40.0	686.0

## Tubing Components

Item Des	OD (in)	Wt (lb/ft)	Grade	Jts	Len (ft)

## Perforation Data

Zone	Bch/St g	Entered Shot Total	Top (ftKB)	Btm (ftKB)	Date

## Other In Hole

Run Date	Des	OD (in)	Top (ftKB)	Btm (ftKB)

## Logs

Date	Type	Top, MD (ftKB)	Btm, MD (ftKB)
10/7/2014	COLLAR LOCATOR	0.0	212.0