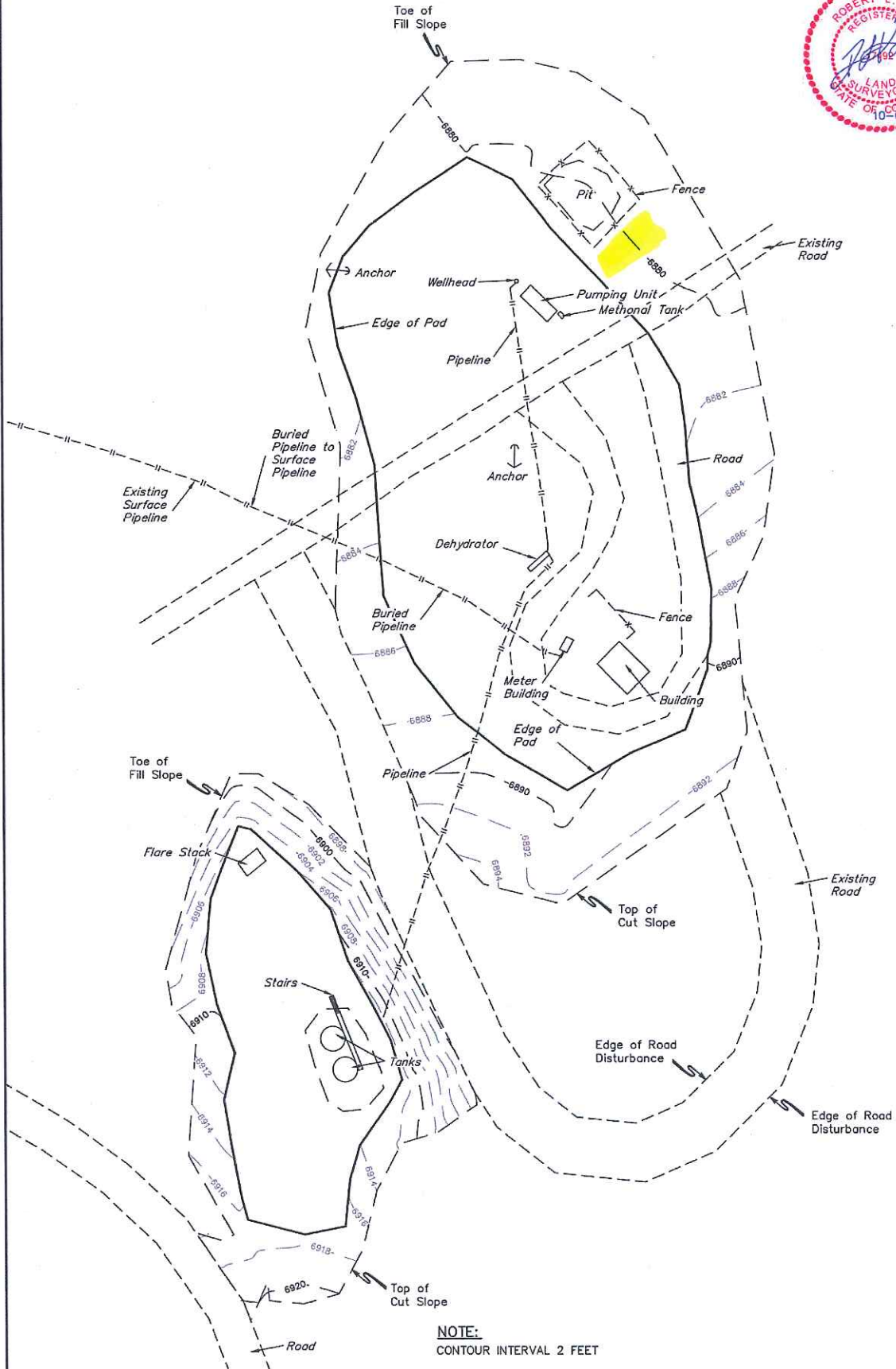


WEXPRO COMPANY  
AS-BUILT SITE PLAN FOR  
CHAPMAN STATE #2  
SECTION 16, T11N, R97W, 6th P.M.  
SE 1/4 SW 1/4

FIGURE #1

SCALE: 1" = 50'  
DATE: 07-13-12  
DRAWN BY: J.M.H.  
REV: 10-09-12



FINISHED GRADE ELEV. AT LOC. STAKE = 6881.8'

UINTAH ENGINEERING & LAND SURVEYING  
85 So. 200 East • Vernal, Utah 84078 • (435) 789-1017