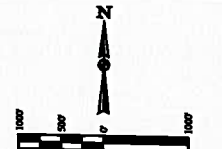


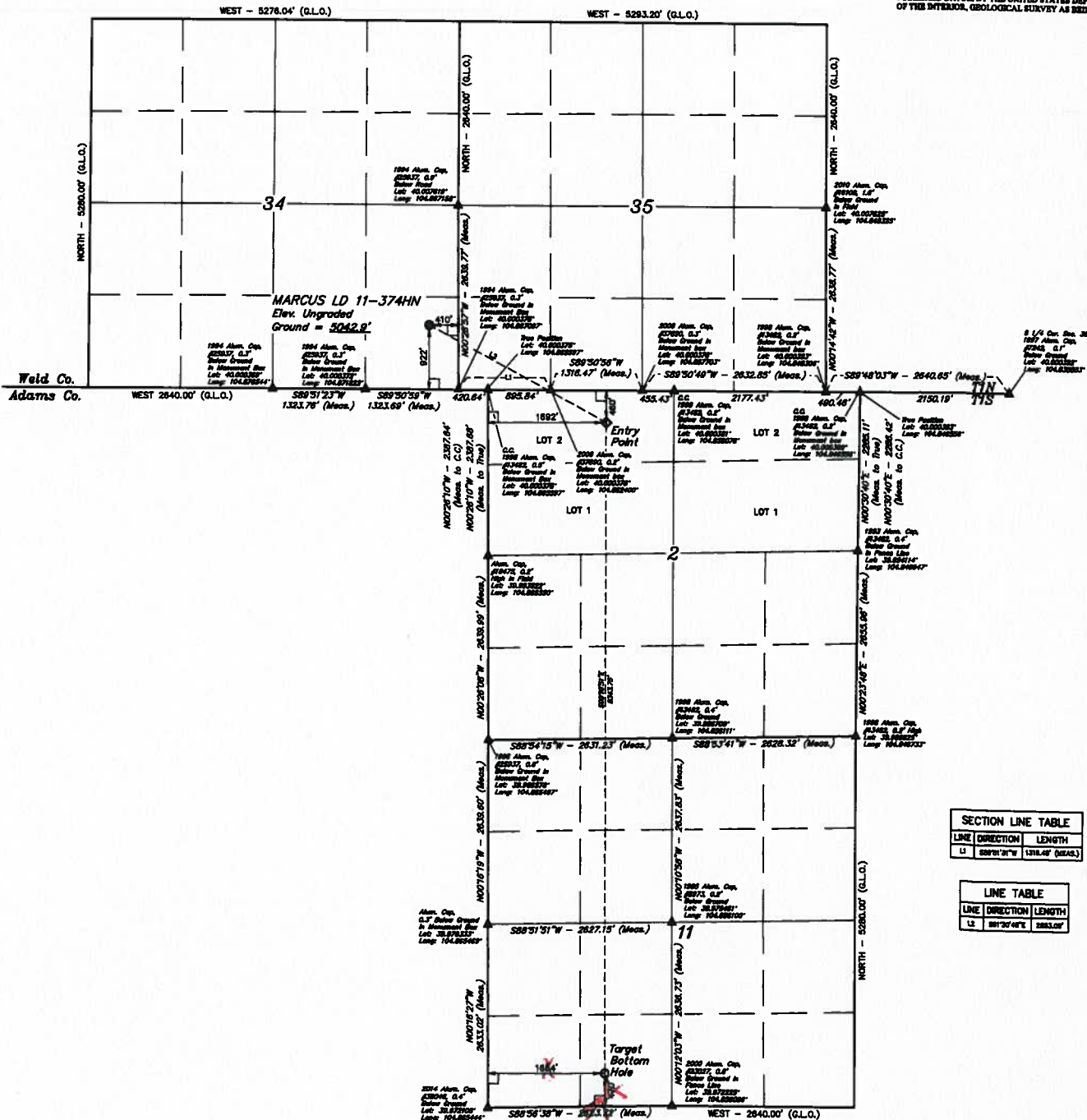
- LEGEND:**
- 8" SYMBOL
 - PROPOSED WELLHEAD
 - ENTRY POINT
 - TARGET BOTTOM HOLE
 - ▲ SECTION CORNERS LOCATED

T1N, R67W, 6th P.M.



BASE OF BEARINGS
BASE OF BEARINGS IS A TYPE OBSERVATION

BASE OF ELEVATION
BENCHMARK B. 33 3024 LOCATED IN THE SW 1/4 SE 1/4 OF SECTION 18, T1N, R67W, 6th P.M., TAKEN FROM 1988 PUBLISHED DATUM BY THE UNITED STATES DEPARTMENT OF THE INTERIOR, GEOLOGICAL SURVEY AS BENCH 3025 FEET.



SECTION LINE TABLE

LINE	DIRECTION	LENGTH
11	S89°31'21"W	1318.48' (MEAS.)

LINE TABLE

LINE	DIRECTION	LENGTH
12	S89°30'46"E	5883.00'

New BHL
170 FSL 1664 FWL

THIS IS TO CERTIFY THAT THE ABOVE DESCRIBED SURVEY WAS MADE BY THE UNDERSIGNED AND THAT THE SAME ARE TRUE AND CORRECT TO THE BEST OF HIS KNOWLEDGE AND BELIEF.

STATE OF COLORADO
COUNTY OF WELD
JAMES CHRISTOPHER, JR.
Surveyor

GREAT WESTERN OIL & GAS COMPANY
MARCUS LD 11-374HN
SE 1/4 SE 1/4, SECTION 14, T1N, R67W, 6th P.M.
WELD COUNTY, COLORADO

UNTAH
Corporate Office • 80 South 900 East
Vernal, UT 84078 • (435) 782-1217

DESIGNED BY JAMES CHRISTOPHER, JR. DATE 11-28-14
DRAWN BY J.W. DATE 11-28-14
SCALE 1" = 1000' REVISIONS: 02-24-15
WELL LOCATION PLAT

FOOT - 14

NAB 37 (NABBY BOTTOM) H0048	NAB 37 (NABBY BOTTOM) H0048	NAB 37 (NABBY BOTTOM) H0048
LATITUDE = 49°59'43.00" (N097448)	LATITUDE = 49°59'43.00" (N097448)	LATITUDE = 49°59'43.00" (N097448)
LONGITUDE = 10°39'24.30" (E098951)	LONGITUDE = 10°39'24.30" (E098951)	LONGITUDE = 10°39'24.30" (E098951)
NAB 37 (NABBY BOTTOM) H0048	NAB 37 (NABBY BOTTOM) H0048	NAB 37 (NABBY BOTTOM) H0048
LATITUDE = 49°59'43.00" (N097448)	LATITUDE = 49°59'43.00" (N097448)	LATITUDE = 49°59'43.00" (N097448)
LONGITUDE = 10°39'24.30" (E098951)	LONGITUDE = 10°39'24.30" (E098951)	LONGITUDE = 10°39'24.30" (E098951)