

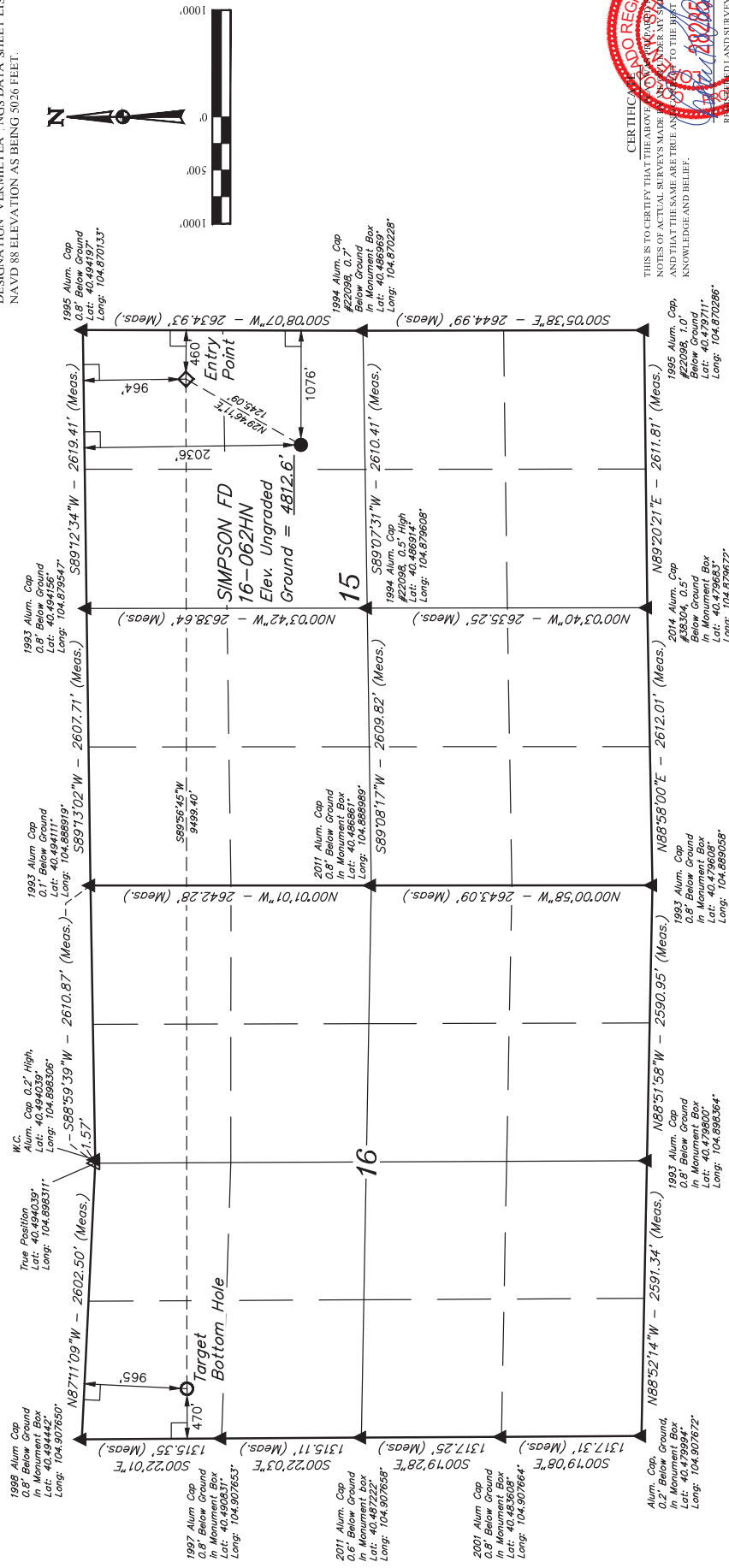
**GREAT WESTERN OIL & GAS COMPANY**

SIMPSON FD 16-062HN  
SE 1/4 NE 1/4, SECTION 15, T6N, R67W, 6th P.M.  
WELD COUNTY, COLORADO

## BASIS OF BEARINGS

### BASIS OF ELEVATION

USGS COOPERATIVE BASE NETWORK CONTROL STATION,  
DESIGNATION "VERMILYEA" NGS DATA SHEET LISTS THE  
NAVD 88 ELEVATION AS BEING 5026 FEET.



THIS IS TO CERTIFY THAT THE ABOVE  
NOTES OF ACTUAL SURVEYS MADE  
AND THAT THE SAME ARE TRUE AND  
KNOWLEDGE AND BELIEF.



**UELS, LLC**  
Corporate Office \* 85 South 200 East  
Vernal, UT 84078 \* (435) 789-1017

ENGINEERING & LAND SURVEYING				SURVEYED BY: DALLAS NIELSEN, D.W.		DATE: 03-13-15	
				DRAWN BY: J.W.		DATE DRAWN: 12-29-14	
				SCALE: 1" = 1000'		REVISED: 03-16-15 J.S.	
NAD 83 (TARGET BOTTOM/HOLE)				NAD 83 (SURFACE LOCATION)			
LATITUDE - 40°50'34.1" (40.8417733)				LATITUDE - 40°29'18.93" (40.488592)			
LONGITUDE - 104°52'41.39" (104.873544)				LONGITUDE - 104°52'26.66" (104.874072)			
NAD 27 (TARGET BOTTOM/HOLE)				NAD 27 (SURFACE LOCATION)			
LATITUDE - 40°50'24.19" (40.841586)				LATITUDE - 40°29'19.00" (40.488611)			
LONGITUDE - 104°52'16.66" (104.873544)				LONGITUDE - 104°52'22.76" (104.873544)			

## WELL LOCATION PLAT

## WELL LOCATION PLAT

**LEGEND:**

- [ ] = 90° SYMBOL  
 ● = PROPOSED WELLHEAD.  
 ○ = TARGET BOTTOM HOLE.  
 ◆ = ENTRY POINT  
 ▲ = SECTION CORNERS LOCATED.  
 △ = SECTION CORNERS RE-ESTABLISHED.  
 (Not Set on Ground.)