

T6N, R67W, 6th P.M.

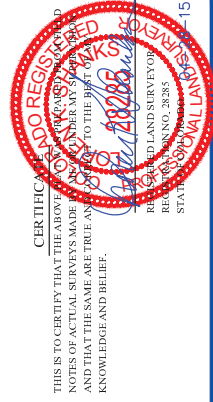
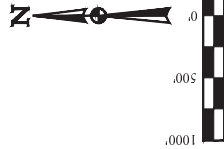
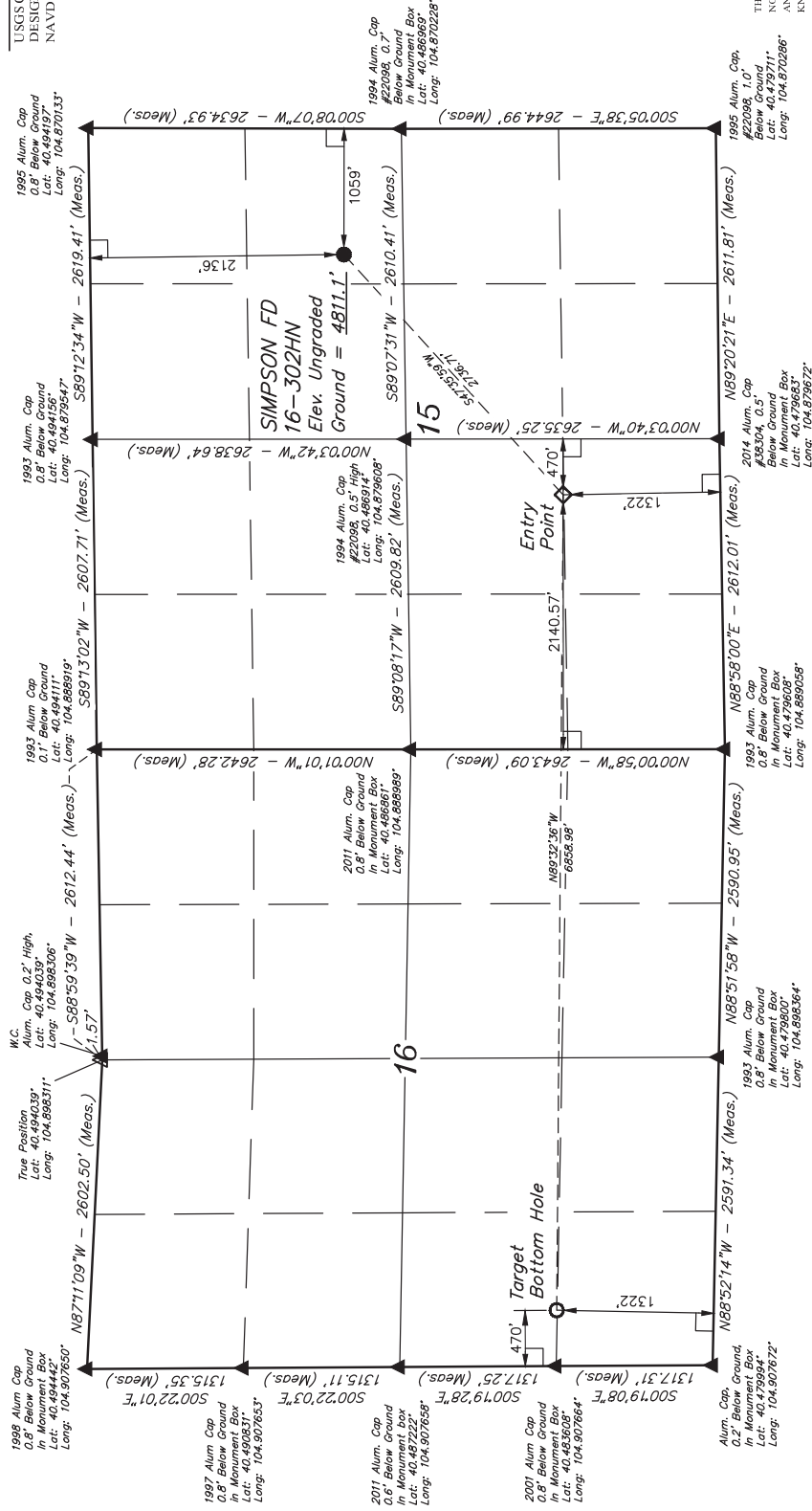
GREAT WESTERN OIL & GAS COMPANY

SIMPSON FD 16-302HN
SE 1/4 NE 1/4, SECTION 15, T6N, R67W, 6th P.M.
WELD COUNTY, COLORADO

BASIS OF BEARINGS

BASIS OF ELEVATION

USGS COOPERATIVE BASE NETWORK CONTROL STATION,
DESIGNATION "VERMILYEA". NGS DATA SHEET LISTS THE
NAVD 88 ELEVATION AS BEING 3026 FEET.



CERTIFICATE TO CERTIFY THAT THE ABOVE SURVEY WAS MADE BY THE SURVEYOR AND THAT THE SAME ARE TRUE AND CORRECT TO THE BEST OF HIS KNOWLEDGE AND BELIEF.

LEGEND:

- 90° SYMBOL
- PROPOSED WELLHEAD
- TARGET BOTTOM HOLE
- ENTRY POINT
- SECTION CORNERS RE-ESTABLISHED
- (Not Set on Ground)

PDOP = 1.2

NAD 83 (TARGET BOTTOM HOLE)	NAD 83 (ENTRY POINT)	NAD 83 (SURFACE LOCATION)
LATITUDE - 40°29'00.91" (40.483356)	LATITUDE - 40°28'59.87" (40.483297)	LATITUDE - 40°29'17.95" (40.483319)
LONGITUDE - 104°54'21.51" (104.905975)	LONGITUDE - 104°53'52.79" (104.881351)	LONGITUDE - 104°52'56.46" (104.874017)
NAD 27 (TARGET BOTTOM HOLE)	NAD 27 (ENTRY POINT)	NAD 27 (SURFACE LOCATION)
LATITUDE - 40°29'00.98" (40.483360)	LATITUDE - 40°28'59.94" (40.483317)	LATITUDE - 40°29'18.01" (40.483356)
LONGITUDE - 104°54'19.61" (104.905444)	LONGITUDE - 104°53'50.89" (104.880803)	LONGITUDE - 104°52'54.56" (104.873489)



JUNTAH
ENGINEERING & LAND SURVEYING
Corporate Office - 85 South 200 East
Vernal, UT 84078 • (435) 789-1017

SURVEYED BY: J. W.	DATE: 03-13-15
DRAWN BY: J. W.	DATE DRAWN: 12-29-14
SCALE: 1" = 100'	REVISED: 04-27-15 J.S.

WELL LOCATION PLAT