



**Bill Barrett Corporation**

## **Bill Barrett Corp.**

**Weld Co., CO**

**Sec.22-T5N-R62W**

**Anschutz State 5-62-22-1724C2**

**Wellbore #1**

**Plan: Design #1**

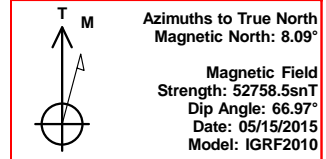
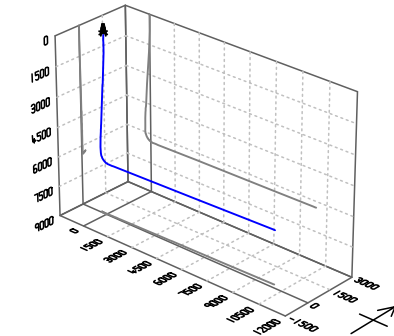
## **Standard Planning Report**

**15 May, 2015**



Bill Barrett Corp.  
Project: Weld Co., CO  
Site: Sec.22-T5N-R62W  
Well: Anschutz State 5-62-22-1724C2  
Wellbore: Wellbore #1  
Design: Design #1  
Lat: 40° 23' 13.268 N  
Long: 104° 19' 5.452 W  
Pad GL: 4719.00  
KB: Well @ 4735.00usft

# Archer



## SECTION DETAILS

MD	Inc	Azi	TVD	+N/-S	+E/-W	Dleg	TFace	VSec	Annotation
0.00	0.00	0.00	0.00	0.00	0.00	0.00	0.00	0.00	
900.00	0.00	0.00	900.00	0.00	0.00	0.00	0.00	0.00	Start Build 2.00
1130.21	4.60	277.64	1129.96	1.23	-9.16	2.00	277.64	-9.14	Start 4089.81 hold at 1130.21 MD
5220.02	4.60	277.64	5206.58	44.87	-334.55	0.00	0.00	-333.66	Start Drop -2.00
5450.23	0.00	0.00	5436.54	46.10	-343.71	2.00	180.00	-342.80	Start 500.02 hold at 5450.23 MD
5950.25	0.00	0.00	5936.56	46.10	-343.71	0.00	0.00	-342.80	Start Build 12.00
6705.39	90.62	88.94	6414.00	55.04	138.81	12.00	88.94	139.80	Start 9760.98 hold at 6705.39 MD
16466.37	90.62	88.94	6309.00	235.87	9897.55	0.00	0.00	9900.22	TD at 16466.37

## WELL DETAILS: Anschutz State 5-62-22-1724C2

+N/-S	+E/-W	Northing	Ground Level: Easting	Latitude	Longitude	Slot
0.00	0.00	1386025.215	3329202.110	40° 23' 13.268 N	104° 19' 5.452 W	

## PROJECT DETAILS: Weld Co., CO

Geodetic System: US State Plane 1983  
Datum: North American Datum 1983  
Ellipsoid: GRS 1980  
Zone: Colorado Northern Zone

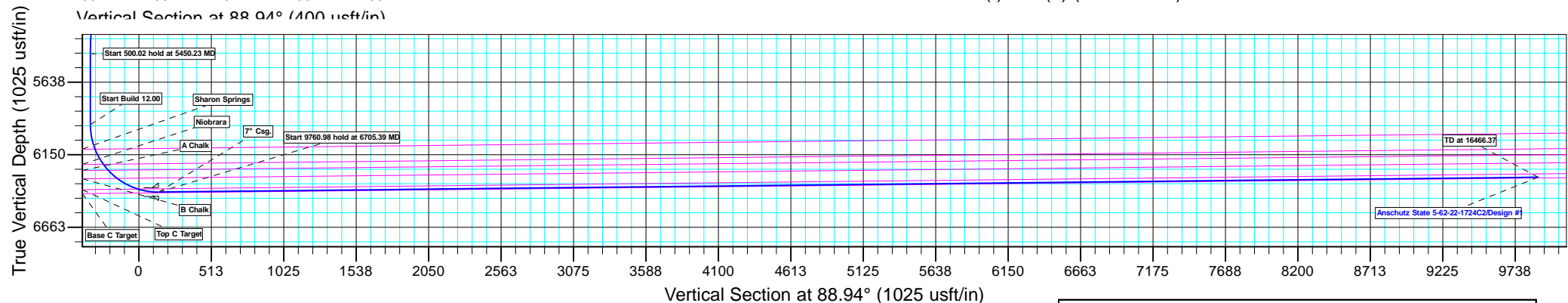
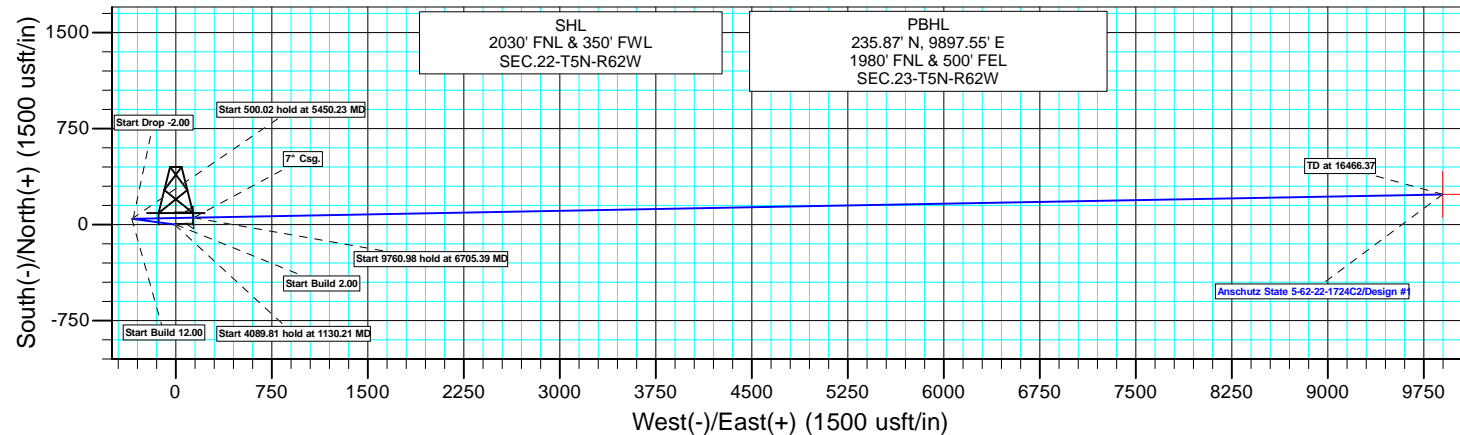
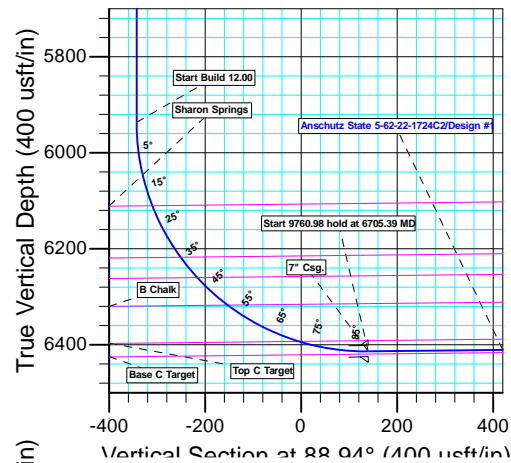
System Datum: Mean Sea Level

## CASING DETAILS

TVD	MD	Name
6414.00	6705.39	7" Csg.

## WELLBORE TARGET DETAILS (LAT/LONG)

Name	TVD	+N/-S	+E/-W	Latitude	Longitude	Shape Point
Anschutz State 5-62-22-1724C2 tgt	6309.00	235.87	9897.55	40° 23' 15.580 N	104° 16' 57.540 W	



Plan: Design #1 (Anschutz State 5-62-22-1724C2/Wellbore #1)

Created By: Ricky Osburn Date: 11:00, May 15 2015

<b>Database:</b>	EDMDBBW	<b>Local Co-ordinate Reference:</b>	Well Anschutz State 5-62-22-1724C2
<b>Company:</b>	Bill Barrett Corp.	<b>TVD Reference:</b>	Well @ 4735.00usft
<b>Project:</b>	Weld Co., CO	<b>MD Reference:</b>	Well @ 4735.00usft
<b>Site:</b>	Sec.22-T5N-R62W	<b>North Reference:</b>	True
<b>Well:</b>	Anschutz State 5-62-22-1724C2	<b>Survey Calculation Method:</b>	Minimum Curvature
<b>Wellbore:</b>	Wellbore #1		
<b>Design:</b>	Design #1		

<b>Project</b>	Weld Co., CO		
<b>Map System:</b>	US State Plane 1983	<b>System Datum:</b>	Mean Sea Level
<b>Geo Datum:</b>	North American Datum 1983		
<b>Map Zone:</b>	Colorado Northern Zone		

Site		Sec.22-T5N-R62W			
Site Position:		Northing:	1,387,395.099 usft	Latitude:	40° 23' 26.801 N
From:	Lat/Long	Easting:	3,329,229.538 usft	Longitude:	104° 19' 4.861 W
Position Uncertainty:	0.00 usft	Slot Radius:	13-3/16 "	Grid Convergence:	0.76 °

Well		Anschutz State 5-62-22-1724C2				
Well Position	+N/-S	-1,369.40 usft	Northing:	1,386,025.215 usft	Latitude:	40° 23' 13.268 N
	+E/-W	-45.68 usft	Easting:	3,329,202.110 usft	Longitude:	104° 19' 5.452 W
Position Uncertainty		0.00 usft	Wellhead Elevation:	0.00 usft	Ground Level:	4,719.00 usft

<b>Wellbore</b>	Wellbore #1				
<b>Magnetics</b>	<b>Model Name</b>	<b>Sample Date</b>	<b>Declination (°)</b>	<b>Dip Angle (°)</b>	<b>Field Strength (nT)</b>
	IGRF2010	2015/05/15	8.09	66.97	52,759

<b>Design</b>	Design #1			
<b>Audit Notes:</b>				
<b>Version:</b>	<b>Phase:</b>	PLAN	<b>Tie On Depth:</b>	0.00
<b>Vertical Section:</b>	<b>Depth From (TVD) (usft)</b>	<b>+N/-S (usft)</b>	<b>+E/-W (usft)</b>	<b>Direction (°)</b>
	0.00	0.00	0.00	88.94

<b>Plan Sections</b>										
Measured Depth (usft)	Inclination (°)	Azimuth (°)	Vertical Depth (usft)	+N/-S (usft)	+E/-W (usft)	Dogleg Rate (°/100usft)	Build Rate (°/100usft)	Turn Rate (°/100usft)	TFO (°)	Target
0.00	0.00	0.00	0.00	0.00	0.00	0.00	0.00	0.00	0.00	
900.00	0.00	0.00	900.00	0.00	0.00	0.00	0.00	0.00	0.00	
1,130.21	4.60	277.64	1,129.96	1.23	-9.16	2.00	2.00	0.00	277.64	
5,220.02	4.60	277.64	5,206.58	44.87	-334.55	0.00	0.00	0.00	0.00	
5,450.23	0.00	0.00	5,436.54	46.10	-343.71	2.00	-2.00	0.00	180.00	
5,950.25	0.00	0.00	5,936.56	46.10	-343.71	0.00	0.00	0.00	0.00	
6,705.39	90.62	88.94	6,414.00	55.04	138.81	12.00	12.00	0.00	88.94	Anschutz State 5-62-2
16,466.37	90.62	88.94	6,309.00	235.87	9,897.55	0.00	0.00	0.00	0.00	Anschutz State 5-62-2

<b>Database:</b>	EDMDBBW	<b>Local Co-ordinate Reference:</b>	Well Anschutz State 5-62-22-1724C2
<b>Company:</b>	Bill Barrett Corp.	<b>TVD Reference:</b>	Well @ 4735.00usft
<b>Project:</b>	Weld Co., CO	<b>MD Reference:</b>	Well @ 4735.00usft
<b>Site:</b>	Sec.22-T5N-R62W	<b>North Reference:</b>	True
<b>Well:</b>	Anschutz State 5-62-22-1724C2	<b>Survey Calculation Method:</b>	Minimum Curvature
<b>Wellbore:</b>	Wellbore #1		
<b>Design:</b>	Design #1		

Planned Survey									
Measured Depth (usft)	Inclination (°)	Azimuth (°)	Vertical Depth (usft)	+N/-S (usft)	+E/-W (usft)	Vertical Section (usft)	Dogleg Rate (°/100usft)	Build Rate (°/100usft)	Turn Rate (°/100usft)
0.00	0.00	0.00	0.00	0.00	0.00	0.00	0.00	0.00	0.00
100.00	0.00	0.00	100.00	0.00	0.00	0.00	0.00	0.00	0.00
200.00	0.00	0.00	200.00	0.00	0.00	0.00	0.00	0.00	0.00
300.00	0.00	0.00	300.00	0.00	0.00	0.00	0.00	0.00	0.00
400.00	0.00	0.00	400.00	0.00	0.00	0.00	0.00	0.00	0.00
500.00	0.00	0.00	500.00	0.00	0.00	0.00	0.00	0.00	0.00
600.00	0.00	0.00	600.00	0.00	0.00	0.00	0.00	0.00	0.00
700.00	0.00	0.00	700.00	0.00	0.00	0.00	0.00	0.00	0.00
800.00	0.00	0.00	800.00	0.00	0.00	0.00	0.00	0.00	0.00
<b>Start Build 2.00</b>									
900.00	0.00	0.00	900.00	0.00	0.00	0.00	0.00	0.00	0.00
1,000.00	2.00	277.64	999.98	0.23	-1.73	-1.73	2.00	2.00	0.00
1,100.00	4.00	277.64	1,099.84	0.93	-6.92	-6.90	2.00	2.00	0.00
<b>Start 4089.81 hold at 1130.21 MD</b>									
1,130.21	4.60	277.64	1,129.96	1.23	-9.16	-9.14	2.00	2.00	0.00
1,200.00	4.60	277.64	1,199.53	1.97	-14.72	-14.68	0.00	0.00	0.00
1,300.00	4.60	277.64	1,299.20	3.04	-22.67	-22.61	0.00	0.00	0.00
1,400.00	4.60	277.64	1,398.88	4.11	-30.63	-30.55	0.00	0.00	0.00
1,500.00	4.60	277.64	1,498.56	5.17	-38.58	-38.48	0.00	0.00	0.00
1,600.00	4.60	277.64	1,598.24	6.24	-46.54	-46.42	0.00	0.00	0.00
1,700.00	4.60	277.64	1,697.91	7.31	-54.50	-54.35	0.00	0.00	0.00
1,800.00	4.60	277.64	1,797.59	8.38	-62.45	-62.29	0.00	0.00	0.00
1,900.00	4.60	277.64	1,897.27	9.44	-70.41	-70.22	0.00	0.00	0.00
2,000.00	4.60	277.64	1,996.95	10.51	-78.36	-78.16	0.00	0.00	0.00
2,100.00	4.60	277.64	2,096.62	11.58	-86.32	-86.09	0.00	0.00	0.00
2,200.00	4.60	277.64	2,196.30	12.64	-94.27	-94.02	0.00	0.00	0.00
2,300.00	4.60	277.64	2,295.98	13.71	-102.23	-101.96	0.00	0.00	0.00
2,400.00	4.60	277.64	2,395.65	14.78	-110.19	-109.89	0.00	0.00	0.00
2,500.00	4.60	277.64	2,495.33	15.85	-118.14	-117.83	0.00	0.00	0.00
2,600.00	4.60	277.64	2,595.01	16.91	-126.10	-125.76	0.00	0.00	0.00
2,700.00	4.60	277.64	2,694.69	17.98	-134.05	-133.70	0.00	0.00	0.00
2,800.00	4.60	277.64	2,794.36	19.05	-142.01	-141.63	0.00	0.00	0.00
2,900.00	4.60	277.64	2,894.04	20.11	-149.97	-149.57	0.00	0.00	0.00
3,000.00	4.60	277.64	2,993.72	21.18	-157.92	-157.50	0.00	0.00	0.00
3,100.00	4.60	277.64	3,093.40	22.25	-165.88	-165.44	0.00	0.00	0.00
3,200.00	4.60	277.64	3,193.07	23.32	-173.83	-173.37	0.00	0.00	0.00
3,300.00	4.60	277.64	3,292.75	24.38	-181.79	-181.31	0.00	0.00	0.00
3,400.00	4.60	277.64	3,392.43	25.45	-189.75	-189.24	0.00	0.00	0.00
3,500.00	4.60	277.64	3,492.10	26.52	-197.70	-197.18	0.00	0.00	0.00
3,600.00	4.60	277.64	3,591.78	27.58	-205.66	-205.11	0.00	0.00	0.00
3,700.00	4.60	277.64	3,691.46	28.65	-213.61	-213.05	0.00	0.00	0.00
3,800.00	4.60	277.64	3,791.14	29.72	-221.57	-220.98	0.00	0.00	0.00
3,900.00	4.60	277.64	3,890.81	30.79	-229.53	-228.92	0.00	0.00	0.00
4,000.00	4.60	277.64	3,990.49	31.85	-237.48	-236.85	0.00	0.00	0.00
4,100.00	4.60	277.64	4,090.17	32.92	-245.44	-244.79	0.00	0.00	0.00
<b>Sussex</b>									
4,179.09	4.60	277.64	4,169.00	33.76	-251.73	-251.06	0.00	0.00	0.00
4,200.00	4.60	277.64	4,189.85	33.99	-253.39	-252.72	0.00	0.00	0.00
4,300.00	4.60	277.64	4,289.52	35.05	-261.35	-260.66	0.00	0.00	0.00
4,400.00	4.60	277.64	4,389.20	36.12	-269.31	-268.59	0.00	0.00	0.00
4,500.00	4.60	277.64	4,488.88	37.19	-277.26	-276.53	0.00	0.00	0.00
4,600.00	4.60	277.64	4,588.56	38.25	-285.22	-284.46	0.00	0.00	0.00
4,700.00	4.60	277.64	4,688.23	39.32	-293.17	-292.40	0.00	0.00	0.00

<b>Database:</b>	EDMDBBW	<b>Local Co-ordinate Reference:</b>	Well Anschutz State 5-62-22-1724C2
<b>Company:</b>	Bill Barrett Corp.	<b>TVD Reference:</b>	Well @ 4735.00usft
<b>Project:</b>	Weld Co., CO	<b>MD Reference:</b>	Well @ 4735.00usft
<b>Site:</b>	Sec.22-T5N-R62W	<b>North Reference:</b>	True
<b>Well:</b>	Anschutz State 5-62-22-1724C2	<b>Survey Calculation Method:</b>	Minimum Curvature
<b>Wellbore:</b>	Wellbore #1		
<b>Design:</b>	Design #1		

Planned Survey									
Measured Depth (usft)	Inclination (°)	Azimuth (°)	Vertical Depth (usft)	+N/-S (usft)	+E/-W (usft)	Vertical Section (usft)	Dogleg Rate (°/100usft)	Build Rate (°/100usft)	Turn Rate (°/100usft)
4,800.00	4.60	277.64	4,787.91	40.39	-301.13	-300.33	0.00	0.00	0.00
4,900.00	4.60	277.64	4,887.59	41.46	-309.09	-308.27	0.00	0.00	0.00
<b>Shannon</b>									
4,993.13	4.60	277.64	4,980.42	42.45	-316.50	-315.66	0.00	0.00	0.00
5,000.00	4.60	277.64	4,987.26	42.52	-317.04	-316.20	0.00	0.00	0.00
5,100.00	4.60	277.64	5,086.94	43.59	-325.00	-324.14	0.00	0.00	0.00
5,200.00	4.60	277.64	5,186.62	44.66	-332.95	-332.07	0.00	0.00	0.00
<b>Start Drop -2.00</b>									
5,220.02	4.60	277.64	5,206.58	44.87	-334.55	-333.66	0.00	0.00	0.00
5,300.00	3.00	277.64	5,286.38	45.58	-339.81	-338.91	2.00	-2.00	0.00
5,400.00	1.00	277.64	5,386.31	46.04	-343.27	-342.36	2.00	-2.00	0.00
<b>Start 500.02 hold at 5450.23 MD</b>									
5,450.23	0.00	0.00	5,436.54	46.10	-343.71	-342.80	2.00	-2.00	0.00
5,500.00	0.00	0.00	5,486.31	46.10	-343.71	-342.80	0.00	0.00	0.00
5,600.00	0.00	0.00	5,586.31	46.10	-343.71	-342.80	0.00	0.00	0.00
5,700.00	0.00	0.00	5,686.31	46.10	-343.71	-342.80	0.00	0.00	0.00
5,800.00	0.00	0.00	5,786.31	46.10	-343.71	-342.80	0.00	0.00	0.00
5,900.00	0.00	0.00	5,886.31	46.10	-343.71	-342.80	0.00	0.00	0.00
<b>Start Build 12.00</b>									
5,950.25	0.00	0.00	5,936.56	46.10	-343.71	-342.80	0.00	0.00	0.00
5,975.00	2.97	88.94	5,961.30	46.11	-343.07	-342.16	12.00	12.00	0.00
6,000.00	5.97	88.94	5,986.22	46.15	-341.12	-340.21	12.00	12.00	0.00
6,025.00	8.97	88.94	6,011.00	46.21	-337.87	-336.96	12.00	12.00	0.00
6,050.00	11.97	88.94	6,035.58	46.29	-333.33	-332.42	12.00	12.00	0.00
6,075.00	14.97	88.94	6,059.89	46.40	-327.51	-326.59	12.00	12.00	0.00
6,100.00	17.97	88.94	6,083.86	46.53	-320.42	-319.51	12.00	12.00	0.00
6,125.00	20.97	88.94	6,107.43	46.69	-312.09	-311.18	12.00	12.00	0.00
<b>Sharon Springs</b>									
6,128.13	21.35	88.94	6,110.36	46.71	-310.96	-310.04	12.00	12.00	0.00
6,150.00	23.97	88.94	6,130.53	46.86	-302.54	-301.62	12.00	12.00	0.00
6,175.00	26.97	88.94	6,153.10	47.06	-291.79	-290.87	12.00	12.00	0.00
6,200.00	29.97	88.94	6,175.07	47.28	-279.88	-278.96	12.00	12.00	0.00
6,225.00	32.97	88.94	6,196.39	47.52	-266.83	-265.91	12.00	12.00	0.00
6,250.00	35.97	88.94	6,217.00	47.79	-252.69	-251.76	12.00	12.00	0.00
<b>Niobrara</b>									
6,250.89	36.08	88.94	6,217.72	47.80	-252.17	-251.24	12.00	12.00	0.00
6,275.00	38.97	88.94	6,236.84	48.07	-237.48	-236.55	12.00	12.00	0.00
6,300.00	41.97	88.94	6,255.86	48.37	-221.26	-220.33	12.00	12.00	0.00
<b>A Chalk</b>									
6,306.06	42.70	88.94	6,260.34	48.44	-217.18	-216.25	12.00	12.00	0.00
6,325.00	44.97	88.94	6,274.00	48.69	-204.07	-203.13	12.00	12.00	0.00
6,350.00	47.97	88.94	6,291.22	49.02	-185.95	-185.01	12.00	12.00	0.00
6,375.00	50.97	88.94	6,307.46	49.38	-166.95	-166.01	12.00	12.00	0.00
<b>B Chalk</b>									
6,391.55	52.96	88.94	6,317.66	49.62	-153.92	-152.98	12.00	12.00	0.00
6,400.00	53.97	88.94	6,322.69	49.74	-147.13	-146.19	12.00	12.00	0.00
6,425.00	56.97	88.94	6,336.86	50.12	-126.54	-125.59	12.00	12.00	0.00
6,450.00	59.97	88.94	6,349.93	50.52	-105.24	-104.29	12.00	12.00	0.00
6,475.00	62.97	88.94	6,361.87	50.93	-83.28	-82.32	12.00	12.00	0.00
6,500.00	65.97	88.94	6,372.64	51.34	-60.73	-59.77	12.00	12.00	0.00
6,525.00	68.97	88.94	6,382.22	51.77	-37.64	-36.68	12.00	12.00	0.00
6,550.00	71.97	88.94	6,390.58	52.21	-14.09	-13.12	12.00	12.00	0.00
<b>Top C Target</b>									

<b>Database:</b>	EDMDBBW	<b>Local Co-ordinate Reference:</b>	Well Anschutz State 5-62-22-1724C2
<b>Company:</b>	Bill Barrett Corp.	<b>TVD Reference:</b>	Well @ 4735.00usft
<b>Project:</b>	Weld Co., CO	<b>MD Reference:</b>	Well @ 4735.00usft
<b>Site:</b>	Sec.22-T5N-R62W	<b>North Reference:</b>	True
<b>Well:</b>	Anschutz State 5-62-22-1724C2	<b>Survey Calculation Method:</b>	Minimum Curvature
<b>Wellbore:</b>	Wellbore #1		
<b>Design:</b>	Design #1		

Planned Survey									
Measured Depth (usft)	Inclination (°)	Azimuth (°)	Vertical Depth (usft)	+N/-S (usft)	+E/-W (usft)	Vertical Section (usft)	Dogleg Rate (°/100usft)	Build Rate (°/100usft)	Turn Rate (°/100usft)
6,558.23	72.96	88.94	6,393.06	52.35	-6.24	-5.27	12.00	12.00	0.00
6,575.00	74.97	88.94	6,397.69	52.65	9.87	10.84	12.00	12.00	0.00
6,600.00	77.97	88.94	6,403.54	53.10	34.17	35.15	12.00	12.00	0.00
6,625.00	80.97	88.94	6,408.11	53.56	58.74	59.72	12.00	12.00	0.00
6,650.00	83.97	88.94	6,411.38	54.02	83.52	84.51	12.00	12.00	0.00
6,675.00	86.97	88.94	6,413.36	54.48	108.44	109.42	12.00	12.00	0.00
6,700.00	89.97	88.94	6,414.02	54.94	133.42	134.41	12.00	12.00	0.00
<b>Start 9760.98 hold at 6705.39 MD - 7" Csg.</b>									
6,705.39	90.62	88.94	6,414.00	55.04	138.81	139.80	12.00	12.00	0.00
6,800.00	90.62	88.94	6,412.98	56.79	233.40	234.41	0.00	0.00	0.00
6,900.00	90.62	88.94	6,411.90	58.65	333.37	334.40	0.00	0.00	0.00
7,000.00	90.62	88.94	6,410.83	60.50	433.35	434.40	0.00	0.00	0.00
7,100.00	90.62	88.94	6,409.75	62.35	533.33	534.39	0.00	0.00	0.00
7,200.00	90.62	88.94	6,408.68	64.20	633.31	634.38	0.00	0.00	0.00
7,300.00	90.62	88.94	6,407.60	66.06	733.28	734.38	0.00	0.00	0.00
7,400.00	90.62	88.94	6,406.53	67.91	833.26	834.37	0.00	0.00	0.00
7,500.00	90.62	88.94	6,405.45	69.76	933.24	934.37	0.00	0.00	0.00
7,600.00	90.62	88.94	6,404.37	71.61	1,033.21	1,034.36	0.00	0.00	0.00
7,700.00	90.62	88.94	6,403.30	73.47	1,133.19	1,134.36	0.00	0.00	0.00
7,800.00	90.62	88.94	6,402.22	75.32	1,233.17	1,234.35	0.00	0.00	0.00
7,900.00	90.62	88.94	6,401.15	77.17	1,333.14	1,334.34	0.00	0.00	0.00
8,000.00	90.62	88.94	6,400.07	79.02	1,433.12	1,434.34	0.00	0.00	0.00
8,100.00	90.62	88.94	6,399.00	80.88	1,533.10	1,534.33	0.00	0.00	0.00
8,200.00	90.62	88.94	6,397.92	82.73	1,633.08	1,634.33	0.00	0.00	0.00
8,300.00	90.62	88.94	6,396.84	84.58	1,733.05	1,734.32	0.00	0.00	0.00
8,400.00	90.62	88.94	6,395.77	86.43	1,833.03	1,834.31	0.00	0.00	0.00
8,500.00	90.62	88.94	6,394.69	88.29	1,933.01	1,934.31	0.00	0.00	0.00
8,600.00	90.62	88.94	6,393.62	90.14	2,032.98	2,034.30	0.00	0.00	0.00
8,700.00	90.62	88.94	6,392.54	91.99	2,132.96	2,134.30	0.00	0.00	0.00
8,800.00	90.62	88.94	6,391.47	93.84	2,232.94	2,234.29	0.00	0.00	0.00
8,900.00	90.62	88.94	6,390.39	95.70	2,332.91	2,334.29	0.00	0.00	0.00
9,000.00	90.62	88.94	6,389.31	97.55	2,432.89	2,434.28	0.00	0.00	0.00
9,100.00	90.62	88.94	6,388.24	99.40	2,532.87	2,534.27	0.00	0.00	0.00
9,200.00	90.62	88.94	6,387.16	101.26	2,632.85	2,634.27	0.00	0.00	0.00
9,300.00	90.62	88.94	6,386.09	103.11	2,732.82	2,734.26	0.00	0.00	0.00
9,400.00	90.62	88.94	6,385.01	104.96	2,832.80	2,834.26	0.00	0.00	0.00
9,500.00	90.62	88.94	6,383.94	106.81	2,932.78	2,934.25	0.00	0.00	0.00
9,600.00	90.62	88.94	6,382.86	108.67	3,032.75	3,034.25	0.00	0.00	0.00
9,700.00	90.62	88.94	6,381.78	110.52	3,132.73	3,134.24	0.00	0.00	0.00
9,800.00	90.62	88.94	6,380.71	112.37	3,232.71	3,234.23	0.00	0.00	0.00
9,900.00	90.62	88.94	6,379.63	114.22	3,332.69	3,334.23	0.00	0.00	0.00
10,000.00	90.62	88.94	6,378.56	116.08	3,432.66	3,434.22	0.00	0.00	0.00
10,100.00	90.62	88.94	6,377.48	117.93	3,532.64	3,534.22	0.00	0.00	0.00
10,200.00	90.62	88.94	6,376.41	119.78	3,632.62	3,634.21	0.00	0.00	0.00
10,300.00	90.62	88.94	6,375.33	121.63	3,732.59	3,734.21	0.00	0.00	0.00
10,400.00	90.62	88.94	6,374.25	123.49	3,832.57	3,834.20	0.00	0.00	0.00
10,500.00	90.62	88.94	6,373.18	125.34	3,932.55	3,934.19	0.00	0.00	0.00
10,600.00	90.62	88.94	6,372.10	127.19	4,032.52	4,034.19	0.00	0.00	0.00
10,700.00	90.62	88.94	6,371.03	129.04	4,132.50	4,134.18	0.00	0.00	0.00
10,800.00	90.62	88.94	6,369.95	130.90	4,232.48	4,234.18	0.00	0.00	0.00
10,900.00	90.62	88.94	6,368.88	132.75	4,332.46	4,334.17	0.00	0.00	0.00
11,000.00	90.62	88.94	6,367.80	134.60	4,432.43	4,434.16	0.00	0.00	0.00
11,100.00	90.62	88.94	6,366.72	136.45	4,532.41	4,534.16	0.00	0.00	0.00

<b>Database:</b>	EDMDBBW	<b>Local Co-ordinate Reference:</b>	Well Anschutz State 5-62-22-1724C2
<b>Company:</b>	Bill Barrett Corp.	<b>TVD Reference:</b>	Well @ 4735.00usft
<b>Project:</b>	Weld Co., CO	<b>MD Reference:</b>	Well @ 4735.00usft
<b>Site:</b>	Sec.22-T5N-R62W	<b>North Reference:</b>	True
<b>Well:</b>	Anschutz State 5-62-22-1724C2	<b>Survey Calculation Method:</b>	Minimum Curvature
<b>Wellbore:</b>	Wellbore #1		
<b>Design:</b>	Design #1		

Planned Survey										
Measured Depth (usft)	Inclination (°)	Azimuth (°)	Vertical Depth (usft)	+N/-S (usft)	+E/-W (usft)	Vertical Section (usft)	Dogleg Rate (°/100usft)	Build Rate (°/100usft)	Turn Rate (°/100usft)	
11,200.00	90.62	88.94	6,365.65	138.31	4,632.39	4,634.15	0.00	0.00	0.00	
11,300.00	90.62	88.94	6,364.57	140.16	4,732.36	4,734.15	0.00	0.00	0.00	
11,400.00	90.62	88.94	6,363.50	142.01	4,832.34	4,834.14	0.00	0.00	0.00	
11,500.00	90.62	88.94	6,362.42	143.86	4,932.32	4,934.14	0.00	0.00	0.00	
11,600.00	90.62	88.94	6,361.35	145.72	5,032.30	5,034.13	0.00	0.00	0.00	
11,700.00	90.62	88.94	6,360.27	147.57	5,132.27	5,134.12	0.00	0.00	0.00	
11,800.00	90.62	88.94	6,359.19	149.42	5,232.25	5,234.12	0.00	0.00	0.00	
11,900.00	90.62	88.94	6,358.12	151.27	5,332.23	5,334.11	0.00	0.00	0.00	
12,000.00	90.62	88.94	6,357.04	153.13	5,432.20	5,434.11	0.00	0.00	0.00	
12,100.00	90.62	88.94	6,355.97	154.98	5,532.18	5,534.10	0.00	0.00	0.00	
12,200.00	90.62	88.94	6,354.89	156.83	5,632.16	5,634.10	0.00	0.00	0.00	
12,300.00	90.62	88.94	6,353.82	158.68	5,732.13	5,734.09	0.00	0.00	0.00	
12,400.00	90.62	88.94	6,352.74	160.54	5,832.11	5,834.08	0.00	0.00	0.00	
12,500.00	90.62	88.94	6,351.66	162.39	5,932.09	5,934.08	0.00	0.00	0.00	
12,600.00	90.62	88.94	6,350.59	164.24	6,032.07	6,034.07	0.00	0.00	0.00	
12,700.00	90.62	88.94	6,349.51	166.09	6,132.04	6,134.07	0.00	0.00	0.00	
12,800.00	90.62	88.94	6,348.44	167.95	6,232.02	6,234.06	0.00	0.00	0.00	
12,900.00	90.62	88.94	6,347.36	169.80	6,332.00	6,334.05	0.00	0.00	0.00	
13,000.00	90.62	88.94	6,346.29	171.65	6,431.97	6,434.05	0.00	0.00	0.00	
13,100.00	90.62	88.94	6,345.21	173.50	6,531.95	6,534.04	0.00	0.00	0.00	
13,200.00	90.62	88.94	6,344.13	175.36	6,631.93	6,634.04	0.00	0.00	0.00	
13,300.00	90.62	88.94	6,343.06	177.21	6,731.91	6,734.03	0.00	0.00	0.00	
13,400.00	90.62	88.94	6,341.98	179.06	6,831.88	6,834.03	0.00	0.00	0.00	
13,500.00	90.62	88.94	6,340.91	180.92	6,931.86	6,934.02	0.00	0.00	0.00	
13,600.00	90.62	88.94	6,339.83	182.77	7,031.84	7,034.01	0.00	0.00	0.00	
13,700.00	90.62	88.94	6,338.76	184.62	7,131.81	7,134.01	0.00	0.00	0.00	
13,800.00	90.62	88.94	6,337.68	186.47	7,231.79	7,234.00	0.00	0.00	0.00	
13,900.00	90.62	88.94	6,336.60	188.33	7,331.77	7,334.00	0.00	0.00	0.00	
14,000.00	90.62	88.94	6,335.53	190.18	7,431.74	7,433.99	0.00	0.00	0.00	
14,100.00	90.62	88.94	6,334.45	192.03	7,531.72	7,533.99	0.00	0.00	0.00	
14,200.00	90.62	88.94	6,333.38	193.88	7,631.70	7,633.98	0.00	0.00	0.00	
14,300.00	90.62	88.94	6,332.30	195.74	7,731.68	7,733.97	0.00	0.00	0.00	
14,400.00	90.62	88.94	6,331.23	197.59	7,831.65	7,833.97	0.00	0.00	0.00	
14,500.00	90.62	88.94	6,330.15	199.44	7,931.63	7,933.96	0.00	0.00	0.00	
14,600.00	90.62	88.94	6,329.07	201.29	8,031.61	8,033.96	0.00	0.00	0.00	
14,700.00	90.62	88.94	6,328.00	203.15	8,131.58	8,133.95	0.00	0.00	0.00	
14,800.00	90.62	88.94	6,326.92	205.00	8,231.56	8,233.94	0.00	0.00	0.00	
14,900.00	90.62	88.94	6,325.85	206.85	8,331.54	8,333.94	0.00	0.00	0.00	
15,000.00	90.62	88.94	6,324.77	208.70	8,431.52	8,433.93	0.00	0.00	0.00	
15,100.00	90.62	88.94	6,323.70	210.56	8,531.49	8,533.93	0.00	0.00	0.00	
15,200.00	90.62	88.94	6,322.62	212.41	8,631.47	8,633.92	0.00	0.00	0.00	
15,300.00	90.62	88.94	6,321.54	214.26	8,731.45	8,733.92	0.00	0.00	0.00	
15,400.00	90.62	88.94	6,320.47	216.11	8,831.42	8,833.91	0.00	0.00	0.00	
15,500.00	90.62	88.94	6,319.39	217.97	8,931.40	8,933.90	0.00	0.00	0.00	
15,600.00	90.62	88.94	6,318.32	219.82	9,031.38	9,033.90	0.00	0.00	0.00	
15,700.00	90.62	88.94	6,317.24	221.67	9,131.35	9,133.89	0.00	0.00	0.00	
15,800.00	90.62	88.94	6,316.17	223.52	9,231.33	9,233.89	0.00	0.00	0.00	
15,900.00	90.62	88.94	6,315.09	225.38	9,331.31	9,333.88	0.00	0.00	0.00	
16,000.00	90.62	88.94	6,314.01	227.23	9,431.29	9,433.88	0.00	0.00	0.00	
16,100.00	90.62	88.94	6,312.94	229.08	9,531.26	9,533.87	0.00	0.00	0.00	
16,200.00	90.62	88.94	6,311.86	230.93	9,631.24	9,633.86	0.00	0.00	0.00	
16,300.00	90.62	88.94	6,310.79	232.79	9,731.22	9,733.86	0.00	0.00	0.00	
16,400.00	90.62	88.94	6,309.71	234.64	9,831.19	9,833.85	0.00	0.00	0.00	
TD at 16466.37										

<b>Database:</b>	EDMDBBW	<b>Local Co-ordinate Reference:</b>	Well Anschutz State 5-62-22-1724C2
<b>Company:</b>	Bill Barrett Corp.	<b>TVD Reference:</b>	Well @ 4735.00usft
<b>Project:</b>	Weld Co., CO	<b>MD Reference:</b>	Well @ 4735.00usft
<b>Site:</b>	Sec.22-T5N-R62W	<b>North Reference:</b>	True
<b>Well:</b>	Anschutz State 5-62-22-1724C2	<b>Survey Calculation Method:</b>	Minimum Curvature
<b>Wellbore:</b>	Wellbore #1		
<b>Design:</b>	Design #1		

Planned Survey									
Measured Depth (usft)	Inclination (°)	Azimuth (°)	Vertical Depth (usft)	+N/-S (usft)	+E/-W (usft)	Vertical Section (usft)	Dogleg Rate (°/100usft)	Build Rate (°/100usft)	Turn Rate (°/100usft)
16,466.37	90.62	88.94	6,309.00	235.87	9,897.55	9,900.22	0.00	0.00	0.00

Design Targets									
Target Name	Dip Angle (°)	Dip Dir. (°)	TVD (usft)	+N/-S (usft)	+E/-W (usft)	Northing (usft)	Easting (usft)	Latitude	Longitude
- hit/miss target									
- Shape									
Anschutz State 5-62-22-	0.00	0.00	6,309.00	235.87	9,897.55	1,386,392.969	3,339,095.640	40° 23' 15.580 N	104° 16' 57.540 W
- plan hits target center									
- Point									

Casing Points					
Measured Depth (usft)	Vertical Depth (usft)	Name	Casing Diameter (")	Hole Diameter (")	
6,705.39	6,414.00	7" Csg.	7	8-3/4	

Formations					
Measured Depth (usft)	Vertical Depth (usft)	Name	Lithology	Dip (°)	Dip Direction (°)
4,179.09	4,169.00	Sussex		0.00	88.94
4,993.13	4,977.00	Shannon		-0.62	88.94
6,128.13	6,107.00	Sharon Springs		-0.62	88.94
6,250.89	6,215.00	Niobrara		-0.62	88.94
6,306.06	6,258.00	A Chalk		-0.62	88.94
6,391.55	6,316.00	B Chalk		-0.62	88.94
6,558.23	6,393.00	Top C Target		-0.62	88.94

Plan Annotations				
Measured Depth (usft)	Vertical Depth (usft)	Local Coordinates		Comment
		+N/-S (usft)	+E/-W (usft)	
900.00	900.00	0.00	0.00	Start Build 2.00
1,130.21	1,129.96	1.23	-9.16	Start 4089.81 hold at 1130.21 MD
5,220.02	5,206.58	44.87	-334.55	Start Drop -2.00
5,450.23	5,436.54	46.10	-343.71	Start 500.02 hold at 5450.23 MD
5,950.25	5,936.56	46.10	-343.71	Start Build 12.00
6,705.39	6,414.00	55.04	138.81	Start 9760.98 hold at 6705.39 MD
16,466.37	6,309.00	235.87	9,897.55	TD at 16466.37