



Bill Barrett Corporation

Bill Barrett Corp.

Weld Co., CO

Sec.22-T5N-R62W

Anschutz State 5-62-22-3225B2

Wellbore #1

Plan: Design #1

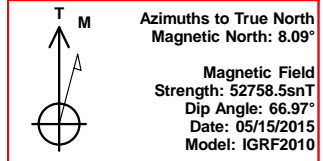
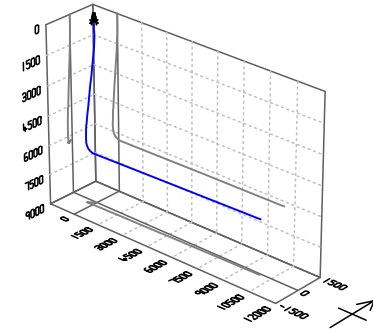
Standard Planning Report

15 May, 2015



Bill Barrett Corp.
Project: Weld Co., CO
Site: Sec.22-T5N-R62W
Well: Anschutz State 5-62-22-3225B2
Wellbore: Wellbore #1
Design: Design #1
Lat: 40° 23' 13.121 N
Long: 104° 19' 5.459 W
Pad GL: 4719.00
KB: Well @ 4735.00usft

Archer



SECTION DETAILS

MD	Inc	Azi	TVD	+N/-S	+E/-W	Dleg	TFace	VSect	Annotation
0.00	0.00	0.00	0.00	0.00	0.00	0.00	0.00	0.00	
900.00	0.00	0.00	900.00	0.00	0.00	0.00	0.00	0.00	Start Build 2.00
1204.17	6.08	232.68	1203.60	-9.78	-12.83	2.00	232.68	-13.01	Start 3880.20 hold at 1204.17 MD
5084.36	6.08	232.68	5061.94	-259.10	-339.83	0.00	0.00	-344.57	Start Drop -2.00
5388.53	0.00	0.00	5365.54	-268.88	-352.66	2.00	180.00	-357.57	Start 500.02 hold at 5388.53 MD
5888.55	0.00	0.00	5865.56	-268.88	-352.66	0.00	0.00	-357.57	Start Build 12.00
6643.44	90.59	88.94	6343.00	-259.94	129.61	12.00	88.94	124.78	Start 9767.76 hold at 6643.44 MD
16411.20	90.59	88.94	6243.00	-78.88	9895.18	0.00	0.00	9892.02	TD at 16411.20

WELL DETAILS: Anschutz State 5-62-22-3225B2

+N/-S	+E/-W	Northing	Ground Level:	Latitude	Longitude	Slot
0.00	0.00	1386010.272	4719.00	40° 23' 13.121 N	104° 19' 5.459 W	

PROJECT DETAILS: Weld Co., CO

Geodetic System: US State Plane 1983
Datum: North American Datum 1983
Ellipsoid: GRS 1980
Zone: Colorado Northern Zone

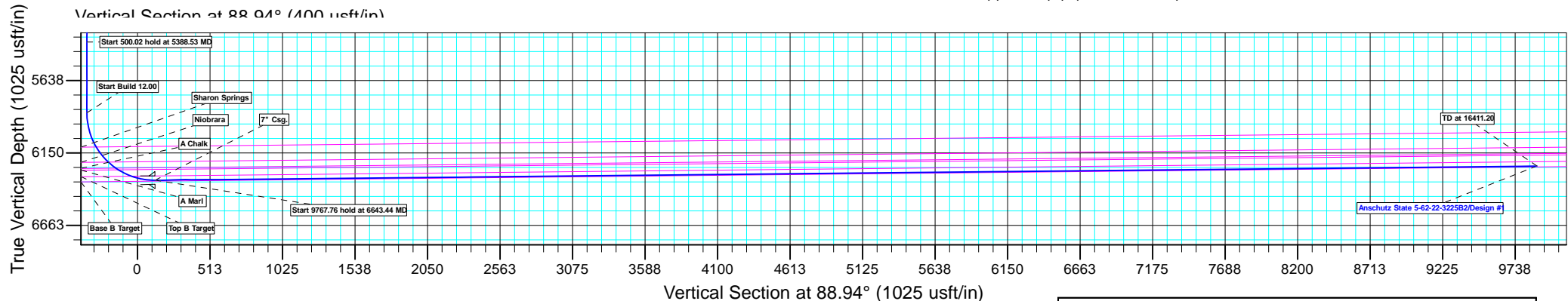
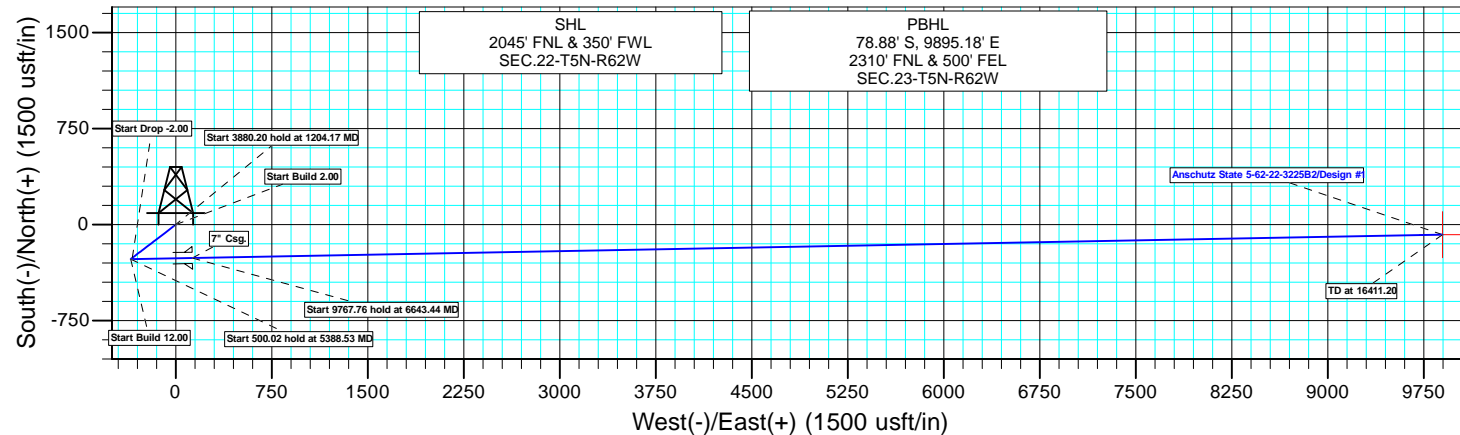
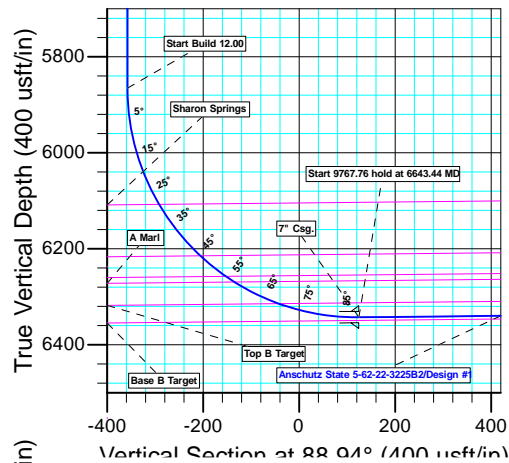
System Datum: Mean Sea Level

CASING DETAILS

TVD	MD	Name
6343.00	6643.44	7" Csg.

WELLBORE TARGET DETAILS (LAT/LONG)

Name	TVD	+N/-S	+E/-W	Latitude	Longitude	Shape Point
Anschutz State 5-62-22-3225B2 tgt	6243.00	-78.88	9895.18	40° 23' 12.322 N	104° 16' 57.580 W	



Plan: Design #1 (Anschutz State 5-62-22-3225B2/Wellbore #1)

Created By: Ricky Osburn Date: 11:04, May 15 2015

Database:	EDMDBBW	Local Co-ordinate Reference:	Well Anschutz State 5-62-22-3225B2
Company:	Bill Barrett Corp.	TVD Reference:	Well @ 4735.00usft
Project:	Weld Co., CO	MD Reference:	Well @ 4735.00usft
Site:	Sec.22-T5N-R62W	North Reference:	True
Well:	Anschutz State 5-62-22-3225B2	Survey Calculation Method:	Minimum Curvature
Wellbore:	Wellbore #1		
Design:	Design #1		

Project	Weld Co., CO		
Map System:	US State Plane 1983	System Datum:	Mean Sea Level
Geo Datum:	North American Datum 1983		
Map Zone:	Colorado Northern Zone		

Site		Sec.22-T5N-R62W			
Site Position:		Northing:	1,387,395.099 usft	Latitude:	40° 23' 26.801 N
From:	Lat/Long	Easting:	3,329,229.538 usft	Longitude:	104° 19' 4.861 W
Position Uncertainty:	0.00 usft	Slot Radius:	13-3/16 "	Grid Convergence:	0.76 °

Well	Anschutz State 5-62-22-3225B2					
Well Position	+N/-S	-1,384.33 usft	Northing:	1,386,010.272 usft	Latitude:	40° 23' 13.121 N
	+E/-W	-46.24 usft	Easting:	3,329,201.752 usft	Longitude:	104° 19' 5.459 W
Position Uncertainty		0.00 usft	Wellhead Elevation:	0.00 usft	Ground Level:	4,719.00 usft

Wellbore	Wellbore #1				
Magnetics	Model Name	Sample Date	Declination (°)	Dip Angle (°)	Field Strength (nT)
	IGRF2010	2015/05/15	8.09	66.97	52,759

Design	Design #1			
Audit Notes:				
Version:	Phase:	PLAN	Tie On Depth:	0.00
Vertical Section:	Depth From (TVD) (usft)	+N/-S (usft)	+E/-W (usft)	Direction (°)
	0.00	0.00	0.00	88.94

Plan Sections										
Measured Depth (usft)	Inclination (°)	Azimuth (°)	Vertical Depth (usft)	+N/-S (usft)	+E/-W (usft)	Dogleg Rate (°/100usft)	Build Rate (°/100usft)	Turn Rate (°/100usft)	TFO (°)	Target
0.00	0.00	0.00	0.00	0.00	0.00	0.00	0.00	0.00	0.00	
900.00	0.00	0.00	900.00	0.00	0.00	0.00	0.00	0.00	0.00	
1,204.17	6.08	232.68	1,203.60	-9.78	-12.83	2.00	2.00	0.00	232.68	
5,084.36	6.08	232.68	5,061.94	-259.10	-339.83	0.00	0.00	0.00	0.00	
5,388.53	0.00	0.00	5,365.54	-268.88	-352.66	2.00	-2.00	0.00	180.00	
5,888.55	0.00	0.00	5,865.56	-268.88	-352.66	0.00	0.00	0.00	0.00	
6,643.44	90.59	88.94	6,343.00	-259.94	129.61	12.00	12.00	0.00	88.94	Anschutz State 5-62-2
16,411.20	90.59	88.94	6,243.00	-78.88	9,895.18	0.00	0.00	0.00	0.00	Anschutz State 5-62-2

Database:	EDMDBBW	Local Co-ordinate Reference:	Well Anschutz State 5-62-22-3225B2
Company:	Bill Barrett Corp.	TVD Reference:	Well @ 4735.00usft
Project:	Weld Co., CO	MD Reference:	Well @ 4735.00usft
Site:	Sec.22-T5N-R62W	North Reference:	True
Well:	Anschutz State 5-62-22-3225B2	Survey Calculation Method:	Minimum Curvature
Wellbore:	Wellbore #1		
Design:	Design #1		

Planned Survey									
Measured Depth (usft)	Inclination (°)	Azimuth (°)	Vertical Depth (usft)	+N/-S (usft)	+E/-W (usft)	Vertical Section (usft)	Dogleg Rate (°/100usft)	Build Rate (°/100usft)	Turn Rate (°/100usft)
0.00	0.00	0.00	0.00	0.00	0.00	0.00	0.00	0.00	0.00
100.00	0.00	0.00	100.00	0.00	0.00	0.00	0.00	0.00	0.00
200.00	0.00	0.00	200.00	0.00	0.00	0.00	0.00	0.00	0.00
300.00	0.00	0.00	300.00	0.00	0.00	0.00	0.00	0.00	0.00
400.00	0.00	0.00	400.00	0.00	0.00	0.00	0.00	0.00	0.00
500.00	0.00	0.00	500.00	0.00	0.00	0.00	0.00	0.00	0.00
600.00	0.00	0.00	600.00	0.00	0.00	0.00	0.00	0.00	0.00
700.00	0.00	0.00	700.00	0.00	0.00	0.00	0.00	0.00	0.00
800.00	0.00	0.00	800.00	0.00	0.00	0.00	0.00	0.00	0.00
Start Build 2.00									
900.00	0.00	0.00	900.00	0.00	0.00	0.00	0.00	0.00	0.00
1,000.00	2.00	232.68	999.98	-1.06	-1.39	-1.41	2.00	2.00	0.00
1,100.00	4.00	232.68	1,099.84	-4.23	-5.55	-5.63	2.00	2.00	0.00
Start 3880.20 hold at 1204.17 MD									
1,204.17	6.08	232.68	1,203.60	-9.78	-12.83	-13.01	2.00	2.00	0.00
1,300.00	6.08	232.68	1,298.89	-15.94	-20.91	-21.20	0.00	0.00	0.00
1,400.00	6.08	232.68	1,398.33	-22.36	-29.33	-29.74	0.00	0.00	0.00
1,500.00	6.08	232.68	1,497.76	-28.79	-37.76	-38.29	0.00	0.00	0.00
1,600.00	6.08	232.68	1,597.20	-35.21	-46.19	-46.83	0.00	0.00	0.00
1,700.00	6.08	232.68	1,696.64	-41.64	-54.61	-55.38	0.00	0.00	0.00
1,800.00	6.08	232.68	1,796.07	-48.07	-63.04	-63.92	0.00	0.00	0.00
1,900.00	6.08	232.68	1,895.51	-54.49	-71.47	-72.47	0.00	0.00	0.00
2,000.00	6.08	232.68	1,994.95	-60.92	-79.90	-81.01	0.00	0.00	0.00
2,100.00	6.08	232.68	2,094.38	-67.34	-88.32	-89.56	0.00	0.00	0.00
2,200.00	6.08	232.68	2,193.82	-73.77	-96.75	-98.10	0.00	0.00	0.00
2,300.00	6.08	232.68	2,293.26	-80.19	-105.18	-106.65	0.00	0.00	0.00
2,400.00	6.08	232.68	2,392.69	-86.62	-113.61	-115.19	0.00	0.00	0.00
2,500.00	6.08	232.68	2,492.13	-93.04	-122.03	-123.74	0.00	0.00	0.00
2,600.00	6.08	232.68	2,591.57	-99.47	-130.46	-132.28	0.00	0.00	0.00
2,700.00	6.08	232.68	2,691.01	-105.89	-138.89	-140.82	0.00	0.00	0.00
2,800.00	6.08	232.68	2,790.44	-112.32	-147.32	-149.37	0.00	0.00	0.00
2,900.00	6.08	232.68	2,889.88	-118.74	-155.74	-157.91	0.00	0.00	0.00
3,000.00	6.08	232.68	2,989.32	-125.17	-164.17	-166.46	0.00	0.00	0.00
3,100.00	6.08	232.68	3,088.75	-131.60	-172.60	-175.00	0.00	0.00	0.00
3,200.00	6.08	232.68	3,188.19	-138.02	-181.03	-183.55	0.00	0.00	0.00
3,300.00	6.08	232.68	3,287.63	-144.45	-189.45	-192.09	0.00	0.00	0.00
3,400.00	6.08	232.68	3,387.06	-150.87	-197.88	-200.64	0.00	0.00	0.00
3,500.00	6.08	232.68	3,486.50	-157.30	-206.31	-209.18	0.00	0.00	0.00
3,600.00	6.08	232.68	3,585.94	-163.72	-214.74	-217.73	0.00	0.00	0.00
3,700.00	6.08	232.68	3,685.37	-170.15	-223.16	-226.27	0.00	0.00	0.00
3,800.00	6.08	232.68	3,784.81	-176.57	-231.59	-234.82	0.00	0.00	0.00
3,900.00	6.08	232.68	3,884.25	-183.00	-240.02	-243.36	0.00	0.00	0.00
4,000.00	6.08	232.68	3,983.68	-189.42	-248.45	-251.91	0.00	0.00	0.00
4,100.00	6.08	232.68	4,083.12	-195.85	-256.87	-260.45	0.00	0.00	0.00
Sussex									
4,187.13	6.08	232.68	4,169.76	-201.45	-264.22	-267.90	0.00	0.00	0.00
4,200.00	6.08	232.68	4,182.56	-202.27	-265.30	-269.00	0.00	0.00	0.00
4,300.00	6.08	232.68	4,282.00	-208.70	-273.73	-277.54	0.00	0.00	0.00
4,400.00	6.08	232.68	4,381.43	-215.13	-282.16	-286.09	0.00	0.00	0.00
4,500.00	6.08	232.68	4,480.87	-221.55	-290.58	-294.63	0.00	0.00	0.00
4,600.00	6.08	232.68	4,580.31	-227.98	-299.01	-303.18	0.00	0.00	0.00
4,700.00	6.08	232.68	4,679.74	-234.40	-307.44	-311.72	0.00	0.00	0.00
4,800.00	6.08	232.68	4,779.18	-240.83	-315.87	-320.27	0.00	0.00	0.00

Database:	EDMDBBW	Local Co-ordinate Reference:	Well Anschutz State 5-62-22-3225B2
Company:	Bill Barrett Corp.	TVD Reference:	Well @ 4735.00usft
Project:	Weld Co., CO	MD Reference:	Well @ 4735.00usft
Site:	Sec.22-T5N-R62W	North Reference:	True
Well:	Anschutz State 5-62-22-3225B2	Survey Calculation Method:	Minimum Curvature
Wellbore:	Wellbore #1		
Design:	Design #1		

Planned Survey										
Measured Depth (usft)	Inclination (°)	Azimuth (°)	Vertical Depth (usft)	+N/-S (usft)	+E/-W (usft)	Vertical Section (usft)	Dogleg Rate (°/100usft)	Build Rate (°/100usft)	Turn Rate (°/100usft)	
4,900.00	6.08	232.68	4,878.62	-247.25	-324.29	-328.81	0.00	0.00	0.00	
5,000.00	6.08	232.68	4,978.05	-253.68	-332.72	-337.36	0.00	0.00	0.00	
Shannon										
5,000.42	6.08	232.68	4,978.47	-253.71	-332.76	-337.39	0.00	0.00	0.00	
Start Drop -2.00										
5,084.36	6.08	232.68	5,061.94	-259.10	-339.83	-344.57	0.00	0.00	0.00	
5,100.00	5.77	232.68	5,077.49	-260.08	-341.12	-345.87	2.00	-2.00	0.00	
5,200.00	3.77	232.68	5,177.14	-265.12	-347.73	-352.57	2.00	-2.00	0.00	
5,300.00	1.77	232.68	5,277.02	-268.05	-351.57	-356.47	2.00	-2.00	0.00	
Start 500.02 hold at 5388.53 MD										
5,388.53	0.00	0.00	5,365.54	-268.88	-352.66	-357.57	2.00	-2.00	0.00	
5,400.00	0.00	0.00	5,377.01	-268.88	-352.66	-357.57	0.00	0.00	0.00	
5,500.00	0.00	0.00	5,477.01	-268.88	-352.66	-357.57	0.00	0.00	0.00	
5,600.00	0.00	0.00	5,577.01	-268.88	-352.66	-357.57	0.00	0.00	0.00	
5,700.00	0.00	0.00	5,677.01	-268.88	-352.66	-357.57	0.00	0.00	0.00	
5,800.00	0.00	0.00	5,777.01	-268.88	-352.66	-357.57	0.00	0.00	0.00	
Start Build 12.00										
5,888.55	0.00	0.00	5,865.56	-268.88	-352.66	-357.57	0.00	0.00	0.00	
5,900.00	1.37	88.94	5,877.01	-268.88	-352.52	-357.44	12.00	12.00	0.00	
5,925.00	4.37	88.94	5,901.97	-268.85	-351.27	-356.18	12.00	12.00	0.00	
5,950.00	7.37	88.94	5,926.84	-268.81	-348.71	-353.63	12.00	12.00	0.00	
5,975.00	10.37	88.94	5,951.54	-268.74	-344.86	-349.77	12.00	12.00	0.00	
6,000.00	13.37	88.94	5,976.00	-268.64	-339.71	-344.63	12.00	12.00	0.00	
6,025.00	16.37	88.94	6,000.16	-268.52	-333.30	-338.21	12.00	12.00	0.00	
6,050.00	19.37	88.94	6,023.95	-268.38	-325.63	-330.54	12.00	12.00	0.00	
6,075.00	22.37	88.94	6,047.30	-268.21	-316.72	-321.63	12.00	12.00	0.00	
6,100.00	25.37	88.94	6,070.16	-268.03	-306.61	-311.51	12.00	12.00	0.00	
6,125.00	28.37	88.94	6,092.46	-267.82	-295.31	-300.21	12.00	12.00	0.00	
Sharon Springs										
6,142.85	30.52	88.94	6,108.00	-267.65	-286.54	-291.44	12.00	12.00	0.00	
6,150.00	31.37	88.94	6,114.14	-267.59	-282.86	-287.76	12.00	12.00	0.00	
6,175.00	34.37	88.94	6,135.13	-267.33	-269.30	-274.20	12.00	12.00	0.00	
6,200.00	37.37	88.94	6,155.39	-267.06	-254.65	-259.55	12.00	12.00	0.00	
6,225.00	40.37	88.94	6,174.85	-266.77	-238.96	-243.86	12.00	12.00	0.00	
6,250.00	43.37	88.94	6,193.46	-266.46	-222.28	-227.17	12.00	12.00	0.00	
6,275.00	46.37	88.94	6,211.18	-266.14	-204.65	-209.54	12.00	12.00	0.00	
Niobrara										
6,280.75	47.06	88.94	6,215.11	-266.06	-200.47	-205.35	12.00	12.00	0.00	
6,300.00	49.37	88.94	6,227.94	-265.79	-186.11	-191.00	12.00	12.00	0.00	
6,325.00	52.37	88.94	6,243.72	-265.43	-166.72	-171.61	12.00	12.00	0.00	
A Chalk										
6,348.45	55.19	88.94	6,257.57	-265.08	-147.81	-152.69	12.00	12.00	0.00	
6,350.00	55.37	88.94	6,258.45	-265.06	-146.54	-151.41	12.00	12.00	0.00	
A Marl										
6,369.85	57.76	88.94	6,269.39	-264.75	-129.98	-134.85	12.00	12.00	0.00	
6,375.00	58.37	88.94	6,272.11	-264.67	-125.61	-130.48	12.00	12.00	0.00	
6,400.00	61.37	88.94	6,284.66	-264.27	-103.99	-108.86	12.00	12.00	0.00	
6,425.00	64.37	88.94	6,296.06	-263.86	-81.75	-86.61	12.00	12.00	0.00	
6,450.00	67.37	88.94	6,306.28	-263.43	-58.94	-63.80	12.00	12.00	0.00	
Top B Target										
6,472.50	70.07	88.94	6,314.44	-263.05	-37.97	-42.83	12.00	12.00	0.00	
6,475.00	70.37	88.94	6,315.29	-263.00	-35.62	-40.48	12.00	12.00	0.00	
6,500.00	73.37	88.94	6,323.06	-262.56	-11.87	-16.73	12.00	12.00	0.00	

Database:	EDMDBBW	Local Co-ordinate Reference:	Well Anschutz State 5-62-22-3225B2
Company:	Bill Barrett Corp.	TVD Reference:	Well @ 4735.00usft
Project:	Weld Co., CO	MD Reference:	Well @ 4735.00usft
Site:	Sec.22-T5N-R62W	North Reference:	True
Well:	Anschutz State 5-62-22-3225B2	Survey Calculation Method:	Minimum Curvature
Wellbore:	Wellbore #1		
Design:	Design #1		

Planned Survey									
Measured Depth (usft)	Inclination (°)	Azimuth (°)	Vertical Depth (usft)	+N/-S (usft)	+E/-W (usft)	Vertical Section (usft)	Dogleg Rate (°/100usft)	Build Rate (°/100usft)	Turn Rate (°/100usft)
6,525.00	76.37	88.94	6,329.59	-262.11	12.26	7.41	12.00	12.00	0.00
6,550.00	79.37	88.94	6,334.84	-261.66	36.69	31.85	12.00	12.00	0.00
6,575.00	82.37	88.94	6,338.80	-261.20	61.37	56.53	12.00	12.00	0.00
6,600.00	85.37	88.94	6,341.47	-260.74	86.22	81.38	12.00	12.00	0.00
6,625.00	88.37	88.94	6,342.83	-260.28	111.17	106.34	12.00	12.00	0.00
Start 9767.76 hold at 6643.44 MD - 7" Csg.									
6,643.44	90.59	88.94	6,343.00	-259.94	129.61	124.78	12.00	12.00	0.00
6,700.00	90.59	88.94	6,342.42	-258.89	186.16	181.34	0.00	0.00	0.00
6,800.00	90.59	88.94	6,341.40	-257.04	286.13	281.33	0.00	0.00	0.00
6,900.00	90.59	88.94	6,340.37	-255.18	386.11	381.32	0.00	0.00	0.00
7,000.00	90.59	88.94	6,339.35	-253.33	486.09	481.32	0.00	0.00	0.00
7,100.00	90.59	88.94	6,338.33	-251.48	586.07	581.31	0.00	0.00	0.00
7,200.00	90.59	88.94	6,337.30	-249.62	686.04	681.31	0.00	0.00	0.00
7,300.00	90.59	88.94	6,336.28	-247.77	786.02	781.30	0.00	0.00	0.00
7,400.00	90.59	88.94	6,335.25	-245.92	886.00	881.30	0.00	0.00	0.00
7,500.00	90.59	88.94	6,334.23	-244.06	985.98	981.29	0.00	0.00	0.00
7,600.00	90.59	88.94	6,333.21	-242.21	1,085.95	1,081.29	0.00	0.00	0.00
7,700.00	90.59	88.94	6,332.18	-240.35	1,185.93	1,181.28	0.00	0.00	0.00
7,800.00	90.59	88.94	6,331.16	-238.50	1,285.91	1,281.28	0.00	0.00	0.00
7,900.00	90.59	88.94	6,330.14	-236.65	1,385.89	1,381.27	0.00	0.00	0.00
8,000.00	90.59	88.94	6,329.11	-234.79	1,485.86	1,481.27	0.00	0.00	0.00
8,100.00	90.59	88.94	6,328.09	-232.94	1,585.84	1,581.26	0.00	0.00	0.00
8,200.00	90.59	88.94	6,327.06	-231.09	1,685.82	1,681.26	0.00	0.00	0.00
8,300.00	90.59	88.94	6,326.04	-229.23	1,785.80	1,781.25	0.00	0.00	0.00
8,400.00	90.59	88.94	6,325.02	-227.38	1,885.78	1,881.25	0.00	0.00	0.00
8,500.00	90.59	88.94	6,323.99	-225.53	1,985.75	1,981.24	0.00	0.00	0.00
8,600.00	90.59	88.94	6,322.97	-223.67	2,085.73	2,081.24	0.00	0.00	0.00
8,700.00	90.59	88.94	6,321.94	-221.82	2,185.71	2,181.23	0.00	0.00	0.00
8,800.00	90.59	88.94	6,320.92	-219.96	2,285.69	2,281.23	0.00	0.00	0.00
8,900.00	90.59	88.94	6,319.90	-218.11	2,385.66	2,381.22	0.00	0.00	0.00
9,000.00	90.59	88.94	6,318.87	-216.26	2,485.64	2,481.21	0.00	0.00	0.00
9,100.00	90.59	88.94	6,317.85	-214.40	2,585.62	2,581.21	0.00	0.00	0.00
9,200.00	90.59	88.94	6,316.83	-212.55	2,685.60	2,681.20	0.00	0.00	0.00
9,300.00	90.59	88.94	6,315.80	-210.70	2,785.57	2,781.20	0.00	0.00	0.00
9,400.00	90.59	88.94	6,314.78	-208.84	2,885.55	2,881.19	0.00	0.00	0.00
9,500.00	90.59	88.94	6,313.75	-206.99	2,985.53	2,981.19	0.00	0.00	0.00
9,600.00	90.59	88.94	6,312.73	-205.14	3,085.51	3,081.18	0.00	0.00	0.00
9,700.00	90.59	88.94	6,311.71	-203.28	3,185.48	3,181.18	0.00	0.00	0.00
9,800.00	90.59	88.94	6,310.68	-201.43	3,285.46	3,281.17	0.00	0.00	0.00
9,900.00	90.59	88.94	6,309.66	-199.58	3,385.44	3,381.17	0.00	0.00	0.00
10,000.00	90.59	88.94	6,308.64	-197.72	3,485.42	3,481.16	0.00	0.00	0.00
10,100.00	90.59	88.94	6,307.61	-195.87	3,585.39	3,581.16	0.00	0.00	0.00
10,200.00	90.59	88.94	6,306.59	-194.01	3,685.37	3,681.15	0.00	0.00	0.00
10,300.00	90.59	88.94	6,305.56	-192.16	3,785.35	3,781.15	0.00	0.00	0.00
10,400.00	90.59	88.94	6,304.54	-190.31	3,885.33	3,881.14	0.00	0.00	0.00
10,500.00	90.59	88.94	6,303.52	-188.45	3,985.30	3,981.14	0.00	0.00	0.00
10,600.00	90.59	88.94	6,302.49	-186.60	4,085.28	4,081.13	0.00	0.00	0.00
10,700.00	90.59	88.94	6,301.47	-184.75	4,185.26	4,181.13	0.00	0.00	0.00
10,800.00	90.59	88.94	6,300.45	-182.89	4,285.24	4,281.12	0.00	0.00	0.00
10,900.00	90.59	88.94	6,299.42	-181.04	4,385.21	4,381.12	0.00	0.00	0.00
11,000.00	90.59	88.94	6,298.40	-179.19	4,485.19	4,481.11	0.00	0.00	0.00
11,100.00	90.59	88.94	6,297.37	-177.33	4,585.17	4,581.10	0.00	0.00	0.00
11,200.00	90.59	88.94	6,296.35	-175.48	4,685.15	4,681.10	0.00	0.00	0.00

Database:	EDMDBBW	Local Co-ordinate Reference:	Well Anschutz State 5-62-22-3225B2
Company:	Bill Barrett Corp.	TVD Reference:	Well @ 4735.00usft
Project:	Weld Co., CO	MD Reference:	Well @ 4735.00usft
Site:	Sec.22-T5N-R62W	North Reference:	True
Well:	Anschutz State 5-62-22-3225B2	Survey Calculation Method:	Minimum Curvature
Wellbore:	Wellbore #1		
Design:	Design #1		

Planned Survey									
Measured Depth (usft)	Inclination (°)	Azimuth (°)	Vertical Depth (usft)	+N/-S (usft)	+E/-W (usft)	Vertical Section (usft)	Dogleg Rate (°/100usft)	Build Rate (°/100usft)	Turn Rate (°/100usft)
11,300.00	90.59	88.94	6,295.33	-173.62	4,785.13	4,781.09	0.00	0.00	0.00
11,400.00	90.59	88.94	6,294.30	-171.77	4,885.10	4,881.09	0.00	0.00	0.00
11,500.00	90.59	88.94	6,293.28	-169.92	4,985.08	4,981.08	0.00	0.00	0.00
11,600.00	90.59	88.94	6,292.25	-168.06	5,085.06	5,081.08	0.00	0.00	0.00
11,700.00	90.59	88.94	6,291.23	-166.21	5,185.04	5,181.07	0.00	0.00	0.00
11,800.00	90.59	88.94	6,290.21	-164.36	5,285.01	5,281.07	0.00	0.00	0.00
11,900.00	90.59	88.94	6,289.18	-162.50	5,384.99	5,381.06	0.00	0.00	0.00
12,000.00	90.59	88.94	6,288.16	-160.65	5,484.97	5,481.06	0.00	0.00	0.00
12,100.00	90.59	88.94	6,287.14	-158.80	5,584.95	5,581.05	0.00	0.00	0.00
12,200.00	90.59	88.94	6,286.11	-156.94	5,684.92	5,681.05	0.00	0.00	0.00
12,300.00	90.59	88.94	6,285.09	-155.09	5,784.90	5,781.04	0.00	0.00	0.00
12,400.00	90.59	88.94	6,284.06	-153.24	5,884.88	5,881.04	0.00	0.00	0.00
12,500.00	90.59	88.94	6,283.04	-151.38	5,984.86	5,981.03	0.00	0.00	0.00
12,600.00	90.59	88.94	6,282.02	-149.53	6,084.83	6,081.03	0.00	0.00	0.00
12,700.00	90.59	88.94	6,280.99	-147.67	6,184.81	6,181.02	0.00	0.00	0.00
12,800.00	90.59	88.94	6,279.97	-145.82	6,284.79	6,281.02	0.00	0.00	0.00
12,900.00	90.59	88.94	6,278.95	-143.97	6,384.77	6,381.01	0.00	0.00	0.00
13,000.00	90.59	88.94	6,277.92	-142.11	6,484.74	6,481.01	0.00	0.00	0.00
13,100.00	90.59	88.94	6,276.90	-140.26	6,584.72	6,581.00	0.00	0.00	0.00
13,200.00	90.59	88.94	6,275.87	-138.41	6,684.70	6,680.99	0.00	0.00	0.00
13,300.00	90.59	88.94	6,274.85	-136.55	6,784.68	6,780.99	0.00	0.00	0.00
13,400.00	90.59	88.94	6,273.83	-134.70	6,884.65	6,880.98	0.00	0.00	0.00
13,500.00	90.59	88.94	6,272.80	-132.85	6,984.63	6,980.98	0.00	0.00	0.00
13,600.00	90.59	88.94	6,271.78	-130.99	7,084.61	7,080.97	0.00	0.00	0.00
13,700.00	90.59	88.94	6,270.76	-129.14	7,184.59	7,180.97	0.00	0.00	0.00
13,800.00	90.59	88.94	6,269.73	-127.28	7,284.56	7,280.96	0.00	0.00	0.00
13,900.00	90.59	88.94	6,268.71	-125.43	7,384.54	7,380.96	0.00	0.00	0.00
14,000.00	90.59	88.94	6,267.68	-123.58	7,484.52	7,480.95	0.00	0.00	0.00
14,100.00	90.59	88.94	6,266.66	-121.72	7,584.50	7,580.95	0.00	0.00	0.00
14,200.00	90.59	88.94	6,265.64	-119.87	7,684.47	7,680.94	0.00	0.00	0.00
14,300.00	90.59	88.94	6,264.61	-118.02	7,784.45	7,780.94	0.00	0.00	0.00
14,400.00	90.59	88.94	6,263.59	-116.16	7,884.43	7,880.93	0.00	0.00	0.00
14,500.00	90.59	88.94	6,262.56	-114.31	7,984.41	7,980.93	0.00	0.00	0.00
14,600.00	90.59	88.94	6,261.54	-112.46	8,084.39	8,080.92	0.00	0.00	0.00
14,700.00	90.59	88.94	6,260.52	-110.60	8,184.36	8,180.92	0.00	0.00	0.00
14,800.00	90.59	88.94	6,259.49	-108.75	8,284.34	8,280.91	0.00	0.00	0.00
14,900.00	90.59	88.94	6,258.47	-106.90	8,384.32	8,380.91	0.00	0.00	0.00
15,000.00	90.59	88.94	6,257.45	-105.04	8,484.30	8,480.90	0.00	0.00	0.00
15,100.00	90.59	88.94	6,256.42	-103.19	8,584.27	8,580.90	0.00	0.00	0.00
15,200.00	90.59	88.94	6,255.40	-101.33	8,684.25	8,680.89	0.00	0.00	0.00
15,300.00	90.59	88.94	6,254.37	-99.48	8,784.23	8,780.88	0.00	0.00	0.00
15,400.00	90.59	88.94	6,253.35	-97.63	8,884.21	8,880.88	0.00	0.00	0.00
15,500.00	90.59	88.94	6,252.33	-95.77	8,984.18	8,980.87	0.00	0.00	0.00
15,600.00	90.59	88.94	6,251.30	-93.92	9,084.16	9,080.87	0.00	0.00	0.00
15,700.00	90.59	88.94	6,250.28	-92.07	9,184.14	9,180.86	0.00	0.00	0.00
15,800.00	90.59	88.94	6,249.26	-90.21	9,284.12	9,280.86	0.00	0.00	0.00
15,900.00	90.59	88.94	6,248.23	-88.36	9,384.09	9,380.85	0.00	0.00	0.00
16,000.00	90.59	88.94	6,247.21	-86.51	9,484.07	9,480.85	0.00	0.00	0.00
16,100.00	90.59	88.94	6,246.18	-84.65	9,584.05	9,580.84	0.00	0.00	0.00
16,200.00	90.59	88.94	6,245.16	-82.80	9,684.03	9,680.84	0.00	0.00	0.00
16,300.00	90.59	88.94	6,244.14	-80.94	9,784.00	9,780.83	0.00	0.00	0.00
16,400.00	90.59	88.94	6,243.11	-79.09	9,883.98	9,880.83	0.00	0.00	0.00
TD at 16411.20									
16,411.20	90.59	88.94	6,243.00	-78.88	9,895.18	9,892.02	0.00	0.00	0.00

Database:	EDMDBBW	Local Co-ordinate Reference:	Well Anschutz State 5-62-22-3225B2
Company:	Bill Barrett Corp.	TVD Reference:	Well @ 4735.00usft
Project:	Weld Co., CO	MD Reference:	Well @ 4735.00usft
Site:	Sec.22-T5N-R62W	North Reference:	True
Well:	Anschutz State 5-62-22-3225B2	Survey Calculation Method:	Minimum Curvature
Wellbore:	Wellbore #1		
Design:	Design #1		

Planned Survey									
Measured Depth (usft)	Inclination (°)	Azimuth (°)	Vertical Depth (usft)	+N/-S (usft)	+E/-W (usft)	Vertical Section (usft)	Dogleg Rate (°/100usft)	Build Rate (°/100usft)	Turn Rate (°/100usft)

Design Targets									
Target Name	Dip Angle (°)	Dip Dir. (°)	TVD (usft)	+N/-S (usft)	+E/-W (usft)	Northing (usft)	Easting (usft)	Latitude	Longitude
- hit/miss target									
- Shape									
Anschutz State 5-62-22-	0.00	0.00	6,243.00	-78.88	9,895.18	1,386,063.270	3,339,097.102	40° 23' 12.322 N	104° 16' 57.580 W
- plan hits target center									
- Point									

Casing Points									
Measured Depth (usft)	Vertical Depth (usft)	Name			Casing Diameter (")	Hole Diameter (")			
6,643.44	6,343.00	7" Csg.			7	8-3/4			

Formations									
Measured Depth (usft)	Vertical Depth (usft)	Name		Lithology	Dip (°)	Dip Direction (°)			
4,187.13	4,167.00	Sussex			-0.59	88.94			
5,000.42	4,975.00	Shannon			-0.59	88.94			
6,142.85	6,105.00	Sharon Springs			-0.59	88.94			
6,280.75	6,213.00	Niobrara			-0.59	88.94			
6,348.45	6,256.00	A Chalk			-0.59	88.94			
6,369.85	6,268.00	A Marl			-0.59	88.94			
6,472.50	6,314.00	Top B Target			-0.59	88.94			

Plan Annotations									
Measured Depth (usft)	Vertical Depth (usft)	Local Coordinates				Comment			
900.00	900.00	+N/-S (usft)	+E/-W (usft)			Start Build 2.00			
1,204.17	1,203.60	-9.78	-12.83			Start 3880.20 hold at 1204.17 MD			
5,084.36	5,061.94	-259.10	-339.83			Start Drop -2.00			
5,388.53	5,365.54	-268.88	-352.66			Start 500.02 hold at 5388.53 MD			
5,888.55	5,865.56	-268.88	-352.66			Start Build 12.00			
6,643.44	6,343.00	-259.94	129.61			Start 9767.76 hold at 6643.44 MD			
16,411.20	6,243.00	-78.88	9,895.18			TD at 16411.20			