

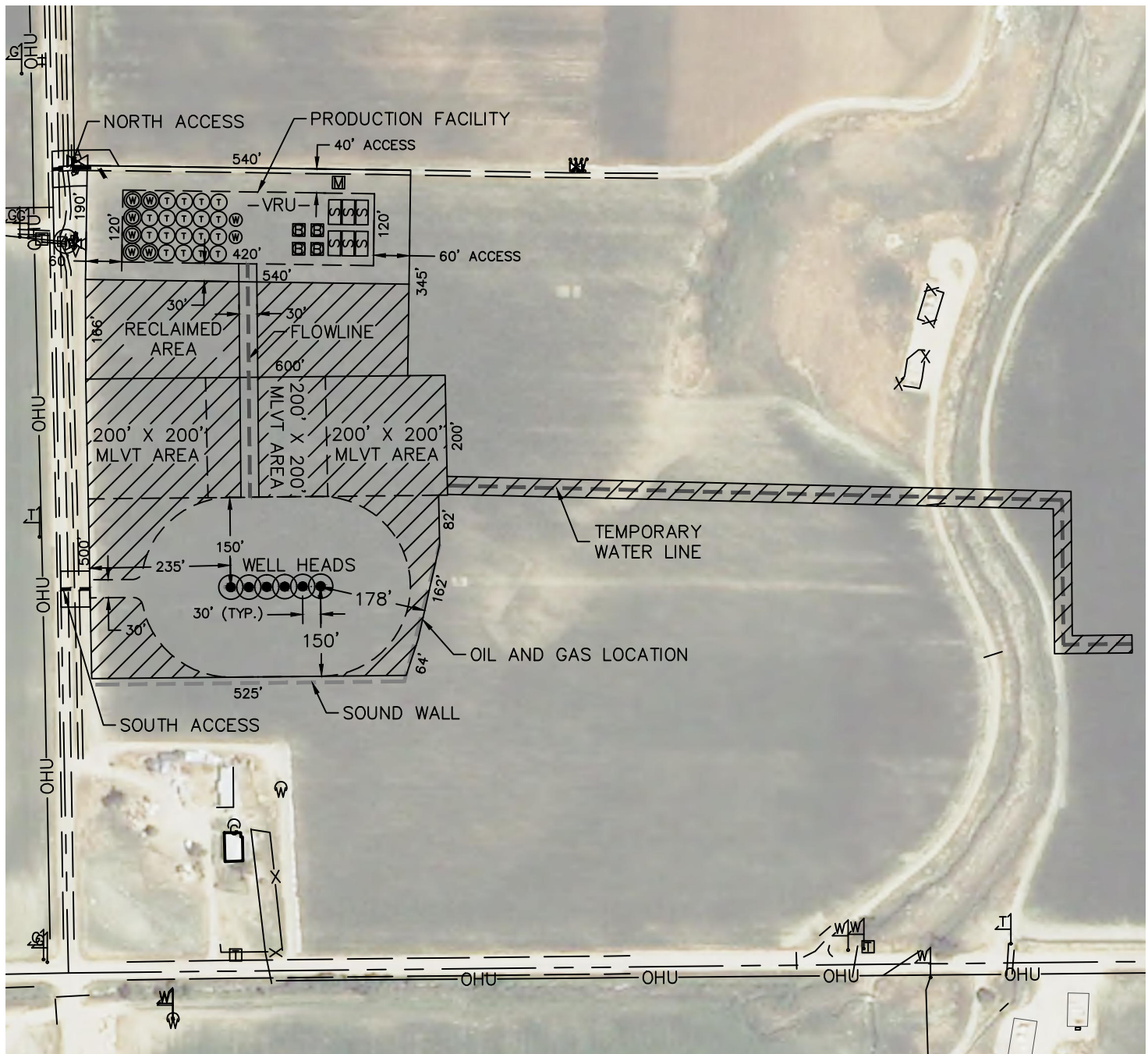


Lat40°, Inc. 6250 W. 10th Street, Unit 2, Greeley, CO 970-515-5294

PROPOSED SCALED FACILITY DRAWING

R&R FARMS 5N63W29L PAD

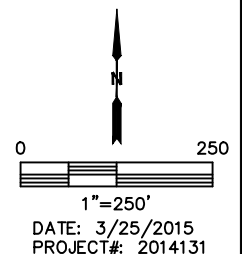
SECTION: 29
TOWNSHIP: 5N
RANGE: 63W



LEGEND

- PROPOSED WELL HEAD
- ⊙ TANK BATTERY
- ⊙ WATER TANK
- ⊙ WATER VAULT
- ⊙ SEPARATOR
- ⊙ ECD
- ⊙ METER
- VRU— VAPOR RECOVERY UNIT

TOTAL DISTURBED AREA OF LOCATION: ±12.1 ACRES
TOTAL SIZE OF LOCATION AFTER RECLAMATION: ±5.5 ACRES



DATE: 3/25/2015
PROJECT#: 2014131