

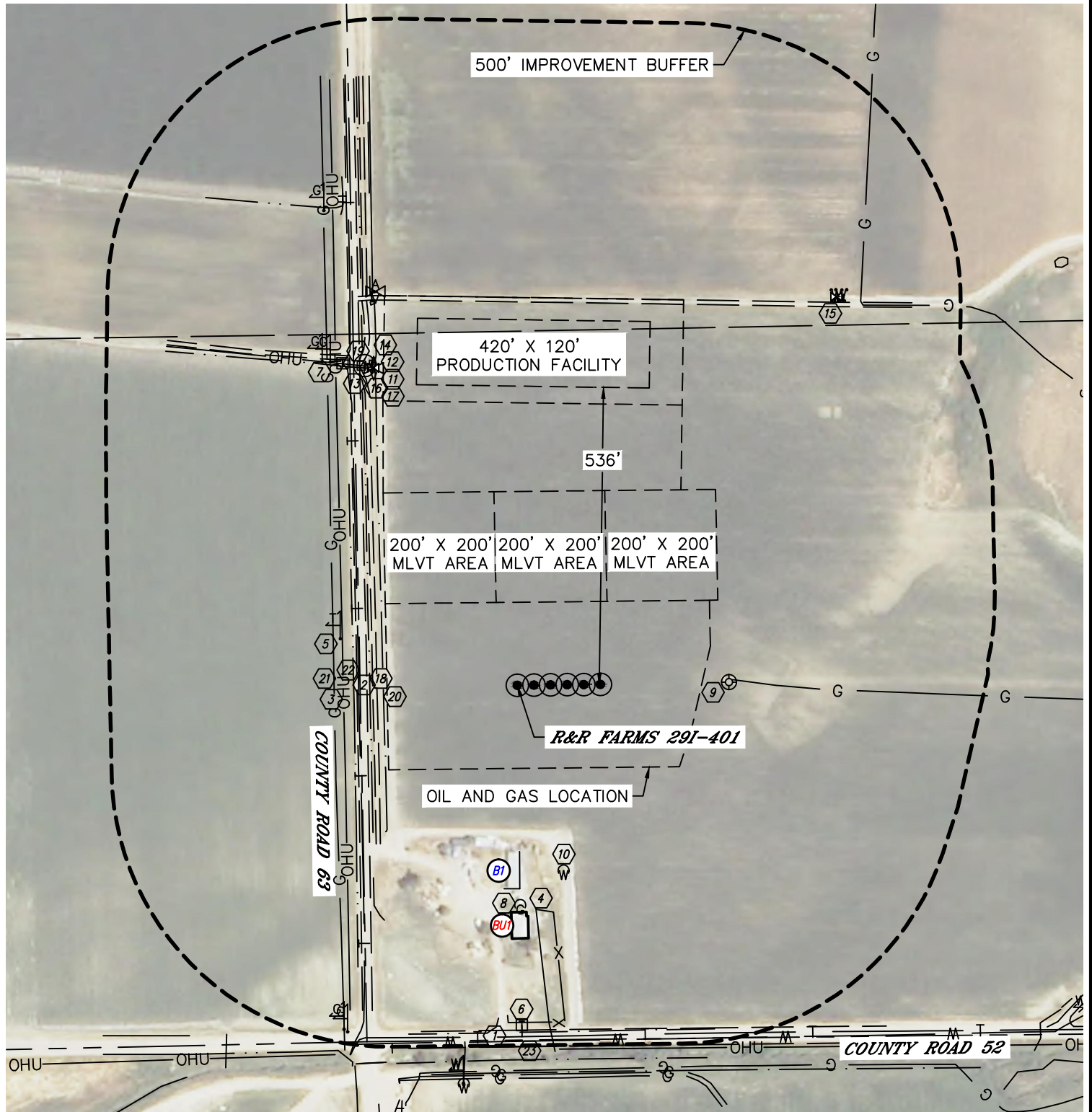


Lat40°, Inc. 6250 W. 10th Street, Unit 2, Greeley, CO 970-515-5294

LOCATION DRAWING

R&R FARMS 5N63W29L PAD

SECTION: 29
TOWNSHIP: 5N
RANGE: 63W





Lat40°, Inc. 6250 W. 10th Street, Unit 2, Greeley, CO 970-515-5294

LOCATION DRAWING

R&R FARMS 5N63W29L PAD

SECTION: 29
TOWNSHIP: 5N
RANGE: 63W

IMPROVEMENTS:

(MEASURED FROM THE PROPOSED R&R FARMS 29I-401 WELL LOCATION)

- ① BUILDING UNIT BU1 410' S
- ② BUILDING B1 300' S
- ③ COUNTY ROAD 52 623' S
- ④ COUNTY ROAD 63 271' W
- ⑤ OVERHEAD UTILITY 314' W, 405' SE, 639' NW
- ⑥ FENCE 406' SE
- ⑦ TELEPHONE MARKER 330' NW
- ⑧ TELEPHONE PEDESTAL 614' S, 661' NW
- ⑨ GAS MARKER 674', 682' & 926' NW, 695' & 696' SW
- ⑩ PROPANE TANK 397' S
- ⑪ EX. WELL HEAD 382' E
- ⑫ WATER SERVICE (IRRIGATION) 345' SE
- ⑬ WATER VALVE 630' NW, 908' NE
- ⑭ AIR VALVE 628' & 756' NW
- ⑮ ELECTRIC METER 639' NW
- ⑯ GUY WIRE 630' NW
- ⑰ POST 909' & 915' NE
- ⑱ PIPE 625', 631', 636', 740', 756' & 924' NW, 911' NE
- ⑲ CONCRETE STRUCTURE 622', 736' & 754' NW
- ⑳ ROAD 253' W, 660', 754' & 925' NW, 692' N
- ㉑ IRRIGATION PUMP HOUSE 635' NW
- ㉒ DITCH 242', 266' & 295' W, 602' & 627' S, 657', 787', 908', 911', 921' & 928' NW
- ㉓ GAS LOCATES 330' W (CONOCO PHILLIPS), 389' E, 928' NE (PDC)
- ㉔ TELEPHONE LOCATES 286' W, 613' & 634' S, 661' NW
- ㉕ WATER LOCATES 643' S, 651' SW