

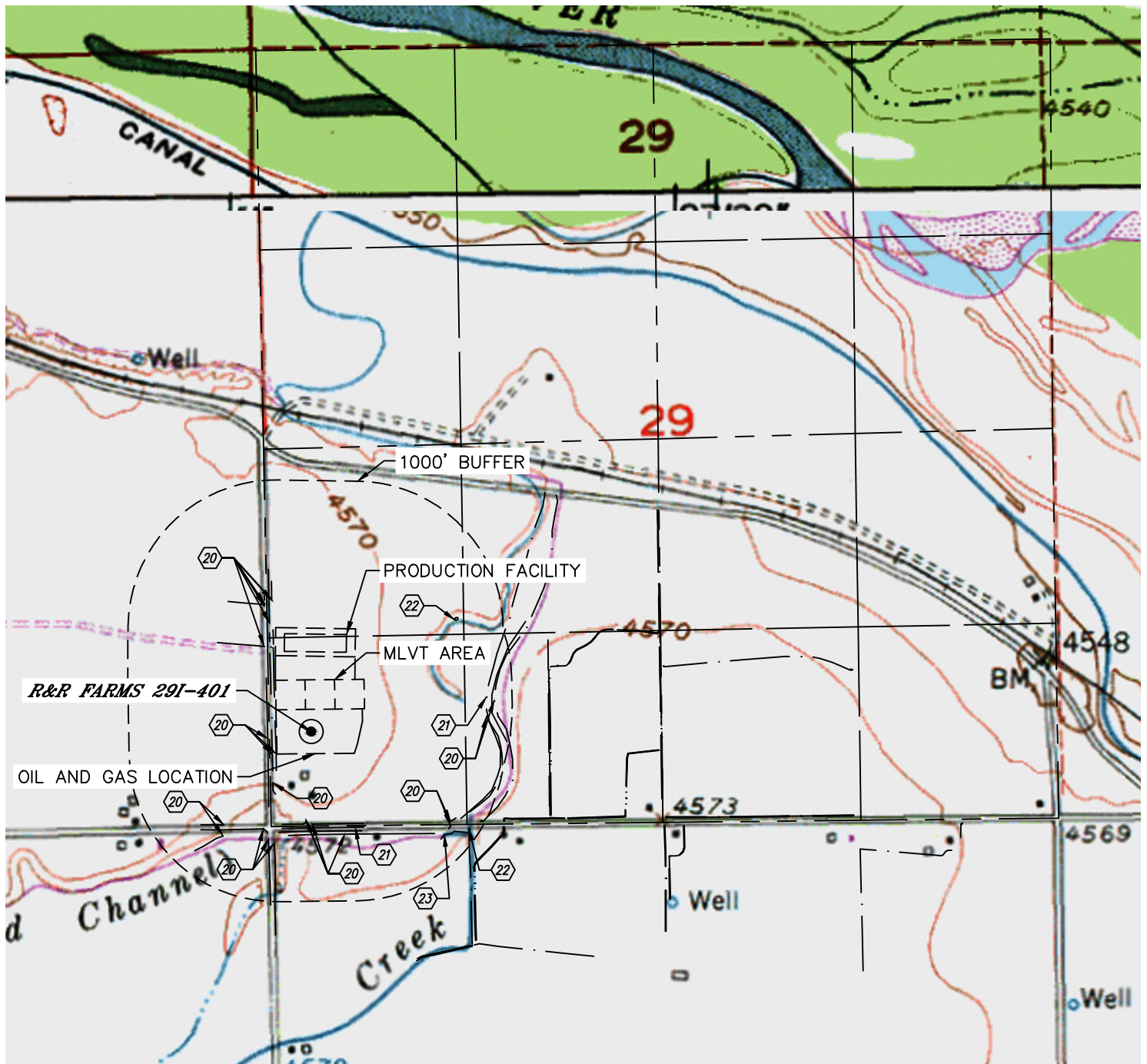


Lat40°, Inc. 6250 W. 10th Street, Unit 2, Greeley, CO 970-515-5294

HYDROLOGY MAP

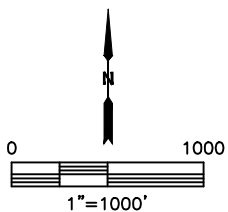
R&R FARMS 5N63W29L PAD

SECTION: 29
TOWNSHIP: 5N
RANGE: 63W



DISTANCES MEASURED FROM NEAREST EDGE OF OIL AND GAS LOCATION.

- ②① DITCH 6', 31', 60' & 74' W, 53', 166', 181' & 187' NW, 197', 515', 580', 599', 604' & 664' SW, 450', 473' & 548' S, 798', 815' & 830' SE, 877' E
- ②① CANAL 501' S, 825' E
- ②② LOW AREA 634' NE, 928' SE
- ②③ BOX ELDER CREEK 822' SE



NEAREST DOWN GRADIENT SURFACE WATER: DITCH 197' SW

DATE: 3/25/2015
PROJECT#: 2014131