



May 7, 2015

Mr. Jacob Evans
Noble Energy, Inc.
1600 Broadway, Suite 2211
Denver, Colorado 80202

**Additional Assessment and Groundwater Sampling Report
State M36-3, M36-5, 6-36, 7-36, and 8-36
Production Tank Release
40.444259 / -104.845056
SW¼ NW¼ SEC.36 T6N R67W 6PM
CR 23 & CR 64 3/4, S 1 2/10, NE 5/10 INTO
Weld County, Colorado
Remediation # 8495**

Dear Mr. Evans,

Eagle Environmental Consulting, Inc. (EAGLE) is pleased to present this Additional Assessment and Groundwater Sampling Report (Report) for the State M36-3, M36-5, 6-36, 7-36, and 8-36 tank battery (Site).

1.0 SITE BACKGROUND

Based on records on file with the Colorado Oil and Gas Conservation Commission (COGCC), the State M36-3, M36-5, 6-36, 7-36, and 8-36 Tank Battery is located at latitude: 40.444259 and longitude: -104.845056 in Weld County, Colorado. The tank battery included two, 300-barrel (bbl) production tanks, one concrete produced water vault (approximately 47.5 bbl), and one fiberglass produced water vault (approximately 120 bbl). The tank battery was rebuilt in Fall 2014. The Cache la Poudre River is located approximately 400 feet east of the Site. A topographic site location map is presented as Figure 1. An aerial site location map is presented as Figure 2.

On June 20, 2014 and June 21, 2014, Custom Environmental Services, Inc. (Custom) performed emergency response activities related to the unintentional release of approximately 178 bbl of crude oil at the Site as a result of flooding due to heavy precipitation and snow melt. Custom deployed hydrophobic pads and booms that were used to absorb crude oil present on the surface adjacent to, and downgradient of the Site.

From June 20, 2014 through June 30, 2014, assessment and remedial activities were performed at the Site. Site activities included the application of Petro-Green ADP-7 solution within the area of surface staining, the completion of a biological/wetlands identification survey, source excavation, and soil boring assessment activities. All assessment and remedial activities completed in June 2014 were detailed in a report submitted to the COGCC on July 31, 2014.

On October 8, 2014 and October 9, 2014, a total of fourteen (14) soil borings (MW-01 through MW-14) were advanced around the tank battery and area of previous surface staining northeast of the tank battery. Following advancement activities, each soil boring was completed as a 1-inch, groundwater monitoring well to define the extents of dissolved petroleum hydrocarbon impacts beneath the site. Soil boring

advancement/monitoring well installation activities were completed by EAGLE using a 7822DT Series Geoprobe track rig.

From January 16, 2015 through January 20, 2015, EAGLE supervised excavation activities to remove petroleum hydrocarbon impacted soils within the unintentional surface release area, east of the State M36-3, M36-5, 6-36, 7-36, and 8-36 tank battery. The final limits of the State M36-3, M36-5, 6-36, 7-36, and 8-36 excavation extended approximately 240 feet north to south, and approximately 55 feet east to west. The excavation was advanced to a total depth of approximately 3.75 feet bgs. Approximately 1,340 cubic yards of soil was removed during excavation activities. Prior to backfill activities, 100 pounds of granular activated carbon (GAC) and 100 pounds of gypsum were applied to the base of the excavation. The excavation area was then backfilled with pea gravel and structural fill.

2.0 SOIL BORING ADVANCEMENT/MONITORING WELL INSTALLATION ACTIVITIES

To assess dissolved benzene, toluene, ethylbenzene, and total xylene (BTEX) impacts associated with the unintentional surface release, EAGLE submitted a site map to Noble with the proposed four (4) remaining monitoring wells to be installed following excavation activities within the unintentional surface release area east of the tank battery.

2.1 Field Work Preparation and Planning

The Utility Notification Center of Colorado (UNCC) was called at least 48 hours in advance of drilling activities to confirm no unmarked utilities were present within the proposed drilling locations. Tier II facility owners were also contacted to confirm the necessary buried utility notifications were completed.

2.2 Soil Boring Advancement/Monitoring Well Completion Activities

On March 18, 2015, a total of four (4) soil borings (MW-15 through MW-18) were advanced around the area of previous surface staining northeast of the tank battery. Following advancement activities, each soil boring was completed as a 1-inch, groundwater monitoring well to define the extents of dissolved petroleum hydrocarbon impacts beneath the site. Soil boring advancement/monitoring well installation activities were completed by EAGLE using a 7822DT Series Geoprobe track rig.

Each location was logged in the field according to soil description, soil classification, moisture content, staining, and volatile organic compound (VOC) concentrations. Monitoring wells, MW-15 through MW-18, were completed with 1-inch, schedule 40, poly vinyl chloride (PVC) pipe to total depths between approximately 9 to 10 feet below ground surface (bgs). Eight feet of 0.010 slot, 1-inch, PVC screen was placed at the bottom of the boring followed by one to four feet of PVC riser. The well annulus was backfilled with 10/20 silica sand to approximately 1 foot above the screened section followed by a hydrated bentonite seal to the surface. Monitoring wells MW-15 through MW-18 were completed as PVC stick-ups.

Following monitoring well installation, EAGLE recorded spatial locations of each monitoring well using a Trimble GeoXT 6000 series instrument and surveyed the top of casing for each monitoring well.

Soil boring logs/monitoring well completion diagrams are included in Attachment A. Monitoring well locations are presented in Figure 3.

2.3 Soil Sampling Procedures

During soil boring advancement/monitoring well installation activities, soil samples were collected continuously within 5-foot, plastic sample liners. The samples within the plastic liners were separated in 2.5-foot intervals for soil identification and analysis. A portion from each interval was placed in a sealable plastic bag, for VOC headspace analysis utilizing a field calibrated photoionization detector (PID). Another portion of the soil sample was placed in a 4-ounce glass jar and packed in an iced cooler for laboratory analysis.

Based on PID reading and sample location above the saturated zone, one soil sample from each boring (MW-15 through MW-18) was submitted to Origins, following standard chain of custody procedures, for laboratory analysis. Each soil sample was analyzed for BTEX, naphthalene, total petroleum hydrocarbon – gasoline range organics (TPH-GRO), and total petroleum hydrocarbon – diesel range organics (TPH-DRO), following modified Environmental Protection Agency (EPA) Methods 8260c and 8015. The laboratory received the soil samples within the required holding time for each laboratory analysis.

2.4 Soil Analytical Results

Based on laboratory analytical results, all soil samples collected from MW-15 through MW-18 did not contain concentrations of BTEX, TPH-GRO, or TPH-DRO exceeding their respective COGCC Table 910-1 regulatory limits or laboratory reporting limits.

Soil analytical results are summarized in Table 1 and presented in Figure 3. The laboratory analytical reports for the soil samples collected during monitoring well installation activities at the site are included in Attachment B.

3.0 GROUNDWATER SAMPLING ACTIVITIES

3.1 Groundwater Sampling Procedures

EAGLE developed the newly installed monitoring wells the day of the installation. On March 19, 2015, EAGLE completed groundwater sampling activities at the site.

Prior to groundwater sample collection, depth to groundwater data was collected using a decontaminated interface probe capable of measuring the depth to groundwater or LNAPL to an accuracy of 0.01 feet.

Relative groundwater elevations within each monitoring well ranged from 89.33 feet (MW-09) to 93.52 feet (MW-03). The groundwater flow direction beneath the site during the March 2015 sampling event was predominantly to the north, with an average hydraulic gradient of 0.010 feet per foot across the site (measured from MW-17 to MW-09). Groundwater elevation data is summarized in Table 2 and presented in Figure 4.

Prior to sample collection, each monitoring well was developed by purging each location a minimum of three well volumes using disposable PVC bailers. Following recharge, groundwater samples were collected from each monitoring well in 40 milliliter (mL) amber vials. The groundwater samples were submitted for laboratory analysis of BTEX following EPA Method 8260C. The samples were transported in an iced cooler under standard chain-of-custody procedures to Origins Laboratory, Inc. located in Denver, Colorado, and were received within Quality Assurance/Quality Control (QA/QC) parameters.

3.2 Groundwater Analytical Results

Based on laboratory analytical results, the groundwater sample collected from monitoring well MW-03 contained a concentration of benzene (11.9 micrograms per liter ($\mu\text{g/L}$)) exceeding the COGCC Table 910-1 regulatory limit of 5 $\mu\text{g/L}$. Groundwater samples collected from the remaining monitoring wells (MW-01, MW-02 and MW-04 through MW-18) did not contain concentrations of BTEX exceeding their respective laboratory reporting limits or COGCC Table 910-1 regulatory limits.

Based on the benzene concentration observed in MW-03, Noble requested EAGLE to collect an additional groundwater sample from MW-03 to determine whether the concentrations was anomalous. On April 1, 2015, EAGLE collected an additional groundwater sample from MW-03, following purging of approximately three well volumes of water. Based on laboratory analytical results, the groundwater sample collected from MW-03 contained a concentration of benzene (12.9 $\mu\text{g/L}$) exceeding the COGCC Table 910-1 regulatory limit of 5 $\mu\text{g/L}$.

Groundwater analytical results are summarized in Table 3 and are presented in Figure 5. The laboratory analytical reports for groundwater samples collected during groundwater sampling activities at the Site are included in Attachment B.

4.0 CONCLUSIONS

Based on the information presented in this Report, EAGLE concludes the following:

- On March 18, 2015, four (4) monitoring wells (MW-15 through MW-18) were installed at the site.
- The soil samples collected from monitoring wells MW-15 through MW-18 did not contain concentrations of BTEX, TPH-GRO, or TPH-DRO exceeding the COGCC Table 910-1 regulatory limits.
- EAGLE collected groundwater samples from monitoring wells MW-01 through MW-18 on March 19, 2015.
- The groundwater sample collected from monitoring well MW-03 on March 19, 2015 contained a concentration of benzene exceeding the COGCC Table 910-1 regulatory limit of 5 $\mu\text{g/L}$.
- EAGLE returned to the site on April 1, 2015 to collect an additional groundwater sample from monitoring well MW-03. The groundwater sample collected from MW-03 on April 1, 2015 contained a concentration of benzene exceeding the COGCC Table 910-1 regulatory limit of 5 $\mu\text{g/L}$.
- Groundwater during the March 2015 groundwater sampling event flowed predominately to the north, with a hydraulic gradient of 0.010 feet per foot (MW-17 to MW-09).

5.0 RECOMMENDATIONS

Based on the information presented in this Report, EAGLE recommends the following:

- Monitor natural attenuation of residual petroleum hydrocarbon impacts remaining at the site with quarterly groundwater sampling. Monitored natural attenuation is the preferred remedial approach based on the vegetative communities present in the area and low benzene concentrations observed.

EAGLE sincerely appreciates the opportunity to provide our services. If you have any questions or require further information, please contact us at (303) 433-0479.

Sincerely,

EAGLE ENVIRONMENTAL CONSULTING, INC.



Robin Lockwood
Project Scientist



Martin Eckert III
Principal/Senior Scientist

TABLES

Table 1: Soil Analytical Results Summary

Table 2: Groundwater Elevation Summary

Table 3: Groundwater Analytical Results Summary

TABLE 1
SOIL ANALYTICAL RESULTS SUMMARY
STATE M36-3, M36-5, 6-36, 7-36, AND 8-36
PRODUCTION TANK RELEASE
40.444259/-104.845056
SW¼ NW¼ SEC. 36, T6N, R67W, 6 PM
WELD COUNTY, COLORADO
REMEDATION # 8495

Sample Location (Latitude / Longitude)	Date	Approximate Depth (inches)	Benzene (mg/kg)	Toluene (mg/kg)	Ethylbenzene (mg/kg)	Total Xylenes (mg/kg)	Naphthalene (mg/kg)	TPH-GRO (mg/kg)	TPH-DRO (mg/kg)	pH	Specific Conductance (mmhos/cm)	Sodium Adsorption Ratio
COGCC Table 910-1 Regulatory Limits (mg/kg)			0.17	85	100	175	23	500		6.0-9.0	4	1200000
SS-01 @ surface (40.445981562 / -104.842166414)	06/20/14	surface	<0.002	<0.002	<0.002	<0.002	<0.008	<0.2	<50.0	NA	NA	NA
SS-02 @ surface (40.445855905 / -104.84258165)	06/20/14	surface	<0.002	<0.002	<0.002	<0.002	<0.008	<0.2	<50.0	NA	NA	NA
SS-03 @ surface (40.445685039 / -104.843011606)	06/20/14	surface	<0.002	<0.002	<0.002	<0.002	<0.008	<0.2	<50.0	NA	NA	NA
SS-04 @ surface (40.445510657 / -104.843363798)	06/20/14	surface	<0.002	<0.002	<0.002	<0.002	<0.008	<0.2	<50.0	NA	NA	NA
SS-05 @ surface (40.445378447 / -104.843494015)	06/20/14	surface	<0.002	<0.002	<0.002	<0.002	<0.008	<0.2	<50.0	NA	NA	NA
SS-06 @ 1-2" (40.444033585 / -104.845026678)	06/21/14	1.0-2.0	<0.002	<0.002	<0.002	<0.002	<0.008	<0.2	1500	7.90	0.229	1.35
SS-07 @ 3-4" (40.444033585 / -104.845026678)	06/21/14	3.0-4.0	<0.05	<0.05	<0.05	<0.05	<0.2	33.7	414	7.69	0.230	1.35
SS-08 @ 1-2" (40.444194133 / -104.844911559)	06/21/14	1.0-2.0	<0.002	<0.002	<0.002	<0.002	<0.008	<0.2	28300	7.53	0.232	1.42
SS-09 @ 3-4" (40.444194133 / -104.844911559)	06/21/14	3.0-4.0	<0.002	<0.002	<0.002	<0.002	<0.008	4.4	3240	7.46	0.283	0.837
SS-10 @ 1-2" (40.444381772 / -104.844747628)	06/21/14	1.0-2.0	<0.002	<0.002	<0.002	<0.002	<0.008	3.6	20500	8.36	0.0434	0.678
SS-11 @ 3-4" (40.444381772 / -104.844747628)	06/21/14	3.0-4.0	<0.05	<0.05	0.09	1.2	0.7	240	41700	8.18	0.0562	1.07
SS-12 @ 1-2" (40.44458152 / -104.84470946)	06/21/14	1.0-2.0	<0.002	<0.002	<0.002	<0.002	<0.008	13.6	3300	7.73	0.284	1.87
SS-13 @ 3-4" (40.44458152 / -104.84470946)	06/21/14	3.0-4.0	<0.002	<0.002	<0.002	<0.002	<0.008	1.5	829	7.76	0.191	1.44
SS-14 @ 1-2" (40.444679006 / -104.844377002)	06/21/14	1.0-2.0	<0.002	<0.002	<0.002	<0.002	<0.008	0.5	1880	8.48	0.0761	0.787
SS-15 @ 3-4" (40.444679006 / -104.844377002)	06/21/14	3.0-4.0	<0.1	0.2	<0.1	<0.1	<0.4	20.0	179	7.69	0.0643	0.84
SS-16 @ 1-2" (40.444877225 / -104.844225377)	06/21/14	1.0-2.0	<0.1	<0.1	<0.1	<0.1	<0.4	<10.0	392	7.80	0.134	1.24
SS-17 @ 3-4" (40.444877225 / -104.844225377)	06/21/14	3.0-4.0	<0.002	<0.002	0.002	0.01	<0.008	0.3	643	7.54	0.168	1.09
SS-18 @ 1-2" (40.444872764 / -104.843980778)	06/21/14	1.0-2.0	<0.05	<0.05	<0.05	<0.05	<0.2	17.1	293	8.09	0.0806	0.768
SS-19 @ 3-4" (40.444872764 / -104.843980778)	06/21/14	3.0-4.0	<0.05	<0.05	<0.05	<0.05	<0.2	<5.0	89.0	7.90	0.127	0.829
SS-20 @ 1-2" (40.444844744 / -104.843751845)	06/21/14	1.0-2.0	<0.002	0.002	<0.002	<0.002	<0.008	<0.2	518	7.33	0.131	0.588
SS-21 @ 3-4" (40.444844744 / -104.843751845)	06/21/14	3.0-4.0	<0.002	0.003	<0.002	<0.002	<0.008	0.2	685	7.48	0.163	0.491
SS-22 @ 6-12" (40.444194133 / -104.844911559)	06/25/14	6.0-12.0	<0.002	<0.002	<0.002	<0.002	<0.008	<0.2	66.4	NA	NA	NA
SS-23 @ 6-12" (40.444381772 / -104.844747628)	06/25/14	6.0-12.0	<0.05	<0.05	<0.05	0.3	0.3	92.0	982	NA	NA	NA
SS-24 @ 12-18" (40.44458152 / -104.84470946)	06/25/14	12.0-18.0	<0.002	<0.002	<0.002	<0.002	<0.008	<0.2	<50.0	NA	NA	NA
SS-25 @ 6-12" (40.444877225 / -104.844225377)	06/25/14	6.0-12.0	0.003	<0.002	<0.002	<0.002	<0.008	<0.2	<50.0	NA	NA	NA

TABLE 1
SOIL ANALYTICAL RESULTS SUMMARY
STATE M36-3, M36-5, 6-36, 7-36, AND 8-36
PRODUCTION TANK RELEASE
40.444259/-104.845056
SW¼ NW¼ SEC. 36, T6N, R67W, 6 PM
WELD COUNTY, COLORADO
REMEDATION # 8495

Sample Location (Latitude / Longitude)	Date	Approximate Depth (inches)	Benzene (mg/kg)	Toluene (mg/kg)	Ethylbenzene (mg/kg)	Total Xylenes (mg/kg)	Naphthalene (mg/kg)	TPH-GRO (mg/kg)	TPH-DRO (mg/kg)	pH	Specific Conductance (mmhos/cm)	Sodium Adsorption Ratio
COGCC Table 910-1 Regulatory Limits (mg/kg)			0.17	85	100	175	23	500		6.0-9.0	4	1200000
SS-26 @ 30-36" (40.444844744 / -104.843751845)	06/25/14	30.0-36.0	<0.002	<0.002	<0.002	<0.002	<0.008	<0.2	<50.0	NA	NA	NA
SS-27 @ 4-8" (40.443969064 / -104.845038769)	06/26/14	4.0-8.0	<0.002	<0.002	<0.002	<0.002	<0.008	<0.2	<50.0	NA	NA	NA
SS-28 @ 22-26" (40.444048624 / -104.845071473)	06/26/14	22.0-26.0	<0.002	<0.002	<0.002	<0.002	<0.008	<0.2	<50.0	NA	NA	NA
SS-29 @ 16-20" (40.444024316 / -104.844993703)	06/26/14	16.0-20.0	<0.002	<0.002	<0.002	<0.002	<0.008	<0.2	<50.0	NA	NA	NA
SS-30 @ 22-26" (40.44423293 / -104.844970576)	06/26/14	22.0-26.0	0.8	4.3	1.1	8.0	<0.8	191	78.0	NA	NA	NA
SS-31 @ 4-8" (40.444159548 / -104.844851054)	06/26/14	4.0-8.0	<0.002	<0.002	<0.002	0.005	<0.008	0.2	<50.0	NA	NA	NA
SS-32 @ 4-8" (40.444401989 / -104.844780656)	06/26/14	4.0-8.0	<0.002	0.002	<0.002	0.007	<0.008	<0.2	<50.0	NA	NA	NA
SS-33 @ 4-8" (40.444344011 / -104.844668852)	06/26/14	4.0-8.0	<0.002	<0.002	<0.002	0.005	<0.008	<0.2	<50.0	NA	NA	NA
SS-34 @ 12-16" (40.444609565 / -104.844739569)	06/27/14	12.0-16.0	<0.002	<0.002	<0.002	<0.002	<0.008	<0.2	<50.0	NA	NA	NA
SS-35 @ 4-8" (40.444527337 / -104.844575814)	06/27/14	4.0-8.0	<0.002	<0.002	<0.002	<0.002	<0.008	<0.2	<50.0	NA	NA	NA
SS-36 @ 8-12" (40.444761834 / -104.844498553)	06/27/14	8.0-12.0	<0.002	<0.002	<0.002	<0.002	<0.008	<0.2	<50.0	NA	NA	NA
SS-37 @ 4-8" (40.444662913 / -104.844327325)	06/27/14	4.0-8.0	<0.002	<0.002	<0.002	<0.002	<0.008	<0.2	<50.0	NA	NA	NA
SS-38 @ 4-8" (40.444873363 / -104.844334236)	06/27/14	4.0-8.0	<0.002	<0.002	<0.002	<0.002	<0.008	<0.2	<50.0	NA	NA	NA
SS-39 @ 4-8" (40.444815128 / -104.844179929)	06/27/14	4.0-8.0	<0.002	<0.002	<0.002	<0.002	<0.008	<0.2	<50.0	NA	NA	NA
SS-40 @ 4-8" (40.444992512 / -104.844184169)	06/27/14	4.0-8.0	<0.002	<0.002	<0.002	<0.002	<0.008	<0.2	<50.0	NA	NA	NA
SS-41 @ 4-8" (40.444958298 / -104.843786868)	06/27/14	4.0-8.0	<0.002	<0.002	<0.002	<0.002	<0.008	<0.2	<50.0	NA	NA	NA
SS-42 @ 4-8" (40.444778035 / -104.843763308)	06/27/14	4.0-8.0	<0.002	<0.002	<0.002	<0.002	<0.008	<0.2	<50.0	NA	NA	NA
SS-43 @ 4-8" (40.44488832 / -104.843703757)	06/27/14	4.0-8.0	<0.002	<0.002	<0.002	<0.002	<0.008	<0.2	<50.0	NA	NA	NA
SS-44 @ 4-8" (40.444624838 / -104.843855268)	06/27/14	4.0-8.0	<0.002	<0.002	<0.002	<0.002	<0.008	<0.2	<50.0	NA	NA	NA
SS-45 @ 4-8" (40.444495488 / -104.843933899)	06/27/14	4.0-8.0	<0.002	<0.002	<0.002	<0.002	<0.008	<0.2	<50.0	NA	NA	NA
SS-46 @ 4-8" (40.444300036 / -104.844105806)	06/27/14	4.0-8.0	<0.002	<0.002	<0.002	<0.002	<0.008	<0.2	<50.0	NA	NA	NA
SS-47 @ 30-36" (40.445050479 / -104.844150918)	06/30/14	30.0-36.0	<0.002	<0.002	<0.002	<0.002	<0.008	<0.2	<50.0	NA	NA	NA
SS-48 @ 18-24" (40.44501361 / -104.844059742)	06/30/14	18.0-24.0	<0.002	<0.002	<0.002	<0.002	<0.008	<0.2	<50.0	NA	NA	NA
SS-49 @ 1-2" (40.444596039 / -104.844632314)	01/16/15	1.0-2.0	<0.002	<0.002	<0.002	<0.002	<0.007	<0.200	<50.0	NA	NA	NA
SS-50 @ 3-4" (40.444596039 / -104.844632314)	01/16/15	3.0-4.0	<0.002	<0.002	<0.002	<0.002	<0.007	<0.200	<50.0	NA	NA	NA
SS-51 @ 1-2" (40.444655569 / -104.844370437)	01/16/15	1.0-2.0	<0.002	<0.002	<0.002	0.003	<0.007	<0.200	<50.0	NA	NA	NA
SS-52 @ 3-4" (40.444866732 / -104.84419184)	01/16/15	3.0-4.0	<0.002	0.002	<0.002	0.008	<0.007	<0.200	<50.0	NA	NA	NA
SS-53 @ 1-2" (40.444843189 / -104.843750025)	01/16/15	1.0-2.0	<0.002	0.002	0.003	0.024	<0.007	0.386	70.0	NA	NA	NA
SS-54 @ 3-4" (40.444843189 / -104.843750025)	01/16/15	3.0-4.0	<0.002	<0.002	<0.002	<0.002	<0.007	<0.200	<50.0	NA	NA	NA

TABLE 1
SOIL ANALYTICAL RESULTS SUMMARY
STATE M36-3, M36-5, 6-36, 7-36, AND 8-36
PRODUCTION TANK RELEASE
40.444259/-104.845056
SW¼ NW¼ SEC. 36, T6N, R67W, 6 PM
WELD COUNTY, COLORADO
REMEDATION # 8495

Sample Location (Latitude / Longitude)	Date	Approximate Depth (feet)	Benzene (mg/kg)	Toluene (mg/kg)	Ethylbenzene (mg/kg)	Total Xylenes (mg/kg)	Naphthalene (mg/kg)	TPH-GRO (mg/kg)	TPH-DRO (mg/kg)	pH	Specific Conductance (mmhos/cm)	Sodium Adsorption Ratio
COGCC Table 910-1 Regulatory Limits (mg/kg)			0.17	85	100	175	23	500		6.0-9.0	4	1200000
TBSS-01 @ 3.5' (40.444345803 / -104.845189974)	06/24/14	3.5	<0.002	<0.002	<0.002	<0.002	<0.008	<0.2	<50.0	NA	NA	NA
TBSS-04 @ 3.5' (40.444380503 / -104.845153519)	06/24/14	3.5	<0.002	<0.002	<0.002	<0.002	<0.008	<0.2	<50.0	8.37	0.106	0.448
TBSS-05 @ 3.0' (40.444358534 / -104.845074397)	06/24/14	3	<0.002	<0.002	<0.002	<0.002	<0.008	<0.2	<50.0	NA	NA	NA
TBSS-18 @ 3.0' (40.444302821 / -104.845218221)	06/25/14	3	<0.002	<0.002	<0.002	0.009	<0.008	<0.2	<50.0	NA	NA	NA
TBSS-19 @ 3.0' (40.444258109 / -104.845235796)	06/25/14	3	<0.002	<0.002	<0.002	<0.002	<0.008	<0.2	<50.0	NA	NA	NA
TBSS-21 @ 3.0' (40.444267 / -104.845234)	06/25/14	3	<0.002	<0.002	<0.002	0.04	<0.008	0.6	<50.0	NA	NA	NA
TBSS-29 @ 3.5' (40.444328437 / -104.844969236)	06/27/14	3.5	<0.002	<0.002	<0.002	<0.002	<0.008	<0.2	<50.0	NA	NA	NA
TBSS-30 @ 3.5' (40.44430919 / -104.844960128)	06/27/14	3.5	<0.002	<0.002	<0.002	<0.002	<0.008	<0.2	<50.0	NA	NA	NA
TBSS-31 @ 3.5' (40.444246927 / -104.844977048)	06/27/14	3.5	0.05	0.06	0.007	0.04	<0.008	0.6	<50.0	NA	NA	NA
TBSS-35 @ 3.5' (40.444392228 / -104.845022434)	06/30/14	3.5	<0.002	<0.002	<0.002	<0.002	<0.008	<0.2	<50.0	NA	NA	NA
TBSS-39 @ 3.0' (40.44417126 / -104.845176684)	06/30/14	3	<0.002	<0.002	<0.002	<0.002	<0.008	<0.2	<50.0	NA	NA	NA
TBSS-40 @ 3.5' (40.444149399 / -104.845087619)	06/30/14	3.5	<0.002	<0.002	<0.002	<0.002	<0.008	<0.2	<50.0	NA	NA	NA
TBSS-41 @ 3.0' (40.444174994 / -104.845018487)	06/30/14	3	0.06	0.005	0.02	0.1	<0.008	2.3	<50.0	NA	NA	NA

TABLE 1
SOIL ANALYTICAL RESULTS SUMMARY
STATE M36-3, M36-5, 6-36, 7-36, AND 8-36
PRODUCTION TANK RELEASE
40.444259/-104.845056
SW¼ NW¼ SEC. 36, T6N, R67W, 6 PM
WELD COUNTY, COLORADO
REMEDATION # 8495

Sample Location (Latitude / Longitude)	Date	Approximate Depth (feet)	Benzene (mg/kg)	Toluene (mg/kg)	Ethylbenzene (mg/kg)	Total Xylenes (mg/kg)	Naphthalene (mg/kg)	TPH-GRO (mg/kg)	TPH-DRO (mg/kg)	pH	Specific Conductance (mmhos/cm)	Sodium Adsorption Ratio
COGCC Table 910-1 Regulatory Limits (mg/kg)			0.17	85	100	175	23	500		6.0-9.0	4	1200000
MW-01 @ 5-7.5' (40.4442984192 / -104.845097276)	10/08/14	5-7.5	<0.05	<0.05	<0.05	<0.05	<0.20	8.70	<50.0	NA	NA	NA
MW-02 @ 2.5-5' (40.4443738812 / -104.845307671)	10/08/14	2.5-5	<0.002	<0.002	<0.002	<0.002	<0.008	0.20	<50.0	NA	NA	NA
MW-03 @ 5-7.5' (40.4445555982 / -104.845110257)	10/08/14	5-7.5	<0.002	<0.002	<0.002	<0.002	<0.008	<0.20	<50.0	NA	NA	NA
MW-04 @ 5-7.5' (40.4442042132 / -104.845320992)	10/08/14	5-7.5	<0.002	<0.002	<0.002	<0.002	<0.008	<0.20	<50.0	NA	NA	NA
MW-05 @ 2.5-5' (40.4440557552 / -104.845269544)	10/08/14	2.5-5	<0.002	<0.002	<0.002	<0.002	<0.008	<0.20	<50.0	NA	NA	NA
MW-06 @ 5-7.5' (40.4446472222 / -104.844883852)	10/08/14	5-7.5	<0.002	<0.002	<0.002	<0.002	<0.008	<0.20	<50.0	NA	NA	NA
MW-07 @ 2.5-5' (40.4448577152 / -104.844490124)	10/08/14	2.5-5	<0.002	<0.002	<0.002	<0.002	<0.008	<0.20	<50.0	NA	NA	NA
MW-08 @ 0-2.5' (40.4446005042 / -104.844397129)	10/08/14	0-2.5	<0.002	<0.002	<0.002	<0.002	<0.008	<0.20	<50.0	NA	NA	NA
MW-09 @ 5-7.5' (40.4450361712 / -104.844249498)	10/09/14	5-7.5	<0.002	<0.002	<0.002	<0.002	<0.008	<0.20	<50.0	NA	NA	NA
MW-10 @ 0-2.5' (40.4449045162 / -104.844167041)	10/09/14	0-2.5	<0.002	<0.002	<0.002	<0.002	<0.008	<0.20	<50.0	NA	NA	NA
MW-11 @ 2.5-5' (40.4449911952 / -104.843986073)	10/09/14	2.5-5	<0.002	<0.002	<0.002	<0.002	<0.008	<0.20	<50.0	NA	NA	NA
MW-12 @ 0-2.5' (40.4448427762 / -104.843944947)	10/09/14	0-2.5	<0.002	<0.002	<0.002	<0.002	<0.008	<0.20	433	NA	NA	NA
MW-13 @ 0-2.5' (40.4449321532 / -104.843770355)	10/09/14	0-2.5	<0.002	<0.002	<0.002	<0.002	<0.008	<0.20	<50.0	NA	NA	NA
MW-14 @ 0-2.5' (40.4447805932 / -104.843778042)	10/09/14	0-2.5	<0.002	<0.002	<0.002	<0.002	<0.008	0.27	581	NA	NA	NA
SS-55 @ 0-2.5' (40.4447805940 / -104.843777968)	02/19/15	0-2.5	<0.002	<0.002	<0.002	<0.002	<0.007	<0.200	72.6	NA	NA	NA
MW-15 @ 2.5-5' (40.4442333392 / -104.844971393)	03/18/15	2.5-5	<0.002	<0.002	<0.002	<0.002	<0.007	<0.200	<50.0	NA	NA	NA
MW-16 @ 0-2.5' (40.4440443272 / -104.845069258)	03/18/15	0-2.5	<0.002	<0.002	<0.002	<0.002	<0.007	<0.200	<50.0	NA	NA	NA
MW-17 @ 0-2.5' (40.4441232392 / -104.844816831)	03/18/15	0-2.5	<0.002	<0.002	<0.002	<0.002	<0.007	<0.200	<50.0	NA	NA	NA
MW-18 @ 0-2.5' (40.4443902552 / -104.844642734)	03/18/15	0-2.5	<0.002	<0.002	<0.002	<0.002	<0.007	<0.200	62.7	NA	NA	NA

TABLE 1
SOIL ANALYTICAL RESULTS SUMMARY
STATE M36-3, M36-5, 6-36, 7-36, AND 8-36
PRODUCTION TANK RELEASE
40.444259/-104.845056
SW¼ NW¼ SEC. 36, T6N, R67W, 6 PM
WELD COUNTY, COLORADO
REMEDIATION # 8495

Sample Location (Latitude / Longitude)	Date	Approximate Depth (feet)	Benzene (mg/kg)	Toluene (mg/kg)	Ethylbenzene (mg/kg)	Total Xylenes (mg/kg)	Naphthalene (mg/kg)	TPH-GRO (mg/kg)	TPH-DRO (mg/kg)	pH	Specific Conductance (mmhos/cm)	Sodium Adsorption Ratio
COGCC Table 910-1 Regulatory Limits (mg/kg)			0.17	85	100	175	23	500		6.0-9.0	4	1200000
EXC-04 @ 1' (40.444570689 / -104.844611586)	01/16/15	1	<0.002	<0.002	<0.002	<0.002	<0.007	<0.200	<50.0	NA	NA	NA
EXC-05 @ 1.5' (40.444560132 / -104.844703534)	01/16/15	1.5	<0.002	<0.002	<0.002	<0.002	<0.007	<0.200	<50.0	NA	NA	NA
EXC-06 @ 1.5' (40.444498122 / -104.844593553)	01/16/15	1.5	<0.002	<0.002	<0.002	<0.002	<0.007	<0.200	<50.0	NA	NA	NA
EXC-07 @ 2' (40.444474845 / -104.844683918)	01/16/15	2	<0.002	<0.002	<0.002	<0.002	<0.007	<0.200	<50.0	NA	NA	NA
EXC-12 @ 2.5' (40.444400338 / -104.844736868)	01/19/15	2.5	<0.002	<0.002	<0.002	<0.002	<0.007	<0.200	<50.0	NA	NA	NA
EXC-13 @ 1' (40.444582971 / -104.84448744)	01/19/15	1	<0.002	<0.002	<0.002	<0.002	<0.007	<0.200	<50.0	NA	NA	NA
EXC-14 @ 2.5' (40.44433311 / -104.844834281)	01/19/15	2.5	<0.002	<0.002	<0.002	<0.002	<0.007	<0.200	87.2	NA	NA	NA
EXC-15 @ 2.5' (40.444309277 / -104.844778451)	01/19/15	2.5	<0.002	<0.002	<0.002	<0.002	<0.007	<0.200	<50.0	NA	NA	NA
EXC-19 @ 2.5' (40.444256376 / -104.844861373)	01/19/15	2.5	<0.002	<0.002	<0.002	<0.002	<0.007	<0.200	53.5	NA	NA	NA
EXC-20 @ 2.5' (40.444215484 / -104.844920063)	01/19/15	2.5	<0.002	<0.002	0.006	0.002	0.116	13.2	768	NA	NA	NA
EXC-21 @ 2.75' (40.444239754 / -104.844966341)	01/19/15	2.75	<0.050	<0.050	0.270	1.32	<0.175	324	479	NA	NA	NA
EXC-24 @ 2' (40.444270624 / -104.844926888)	01/20/15	2	<0.002	<0.002	<0.002	<0.002	<0.007	<0.200	<50.0	NA	NA	NA
EXC-27 @ 2' (40.444408808 / -104.844983055)	01/20/15	2	<0.002	<0.002	<0.002	<0.002	<0.007	<0.200	<50.0	NA	NA	NA
EXC-30 @ 1.5' (40.444048783 / -104.845023824)	01/20/15	1.5	<0.002	<0.002	<0.002	<0.002	<0.007	<0.200	<50.0	NA	NA	NA

COGCC = Colorado Oil and Gas Conservation Commission
mg/kg = milligrams per kilogram
mmhos/cm = millimhos per centimeter

TPH-GRO = Total Petroleum Hydrocarbons - Gasoline Range Organics
TPH-DRO = Total Petroleum Hydrocarbons - Diesel Range Organics
NA = Not Analyzed

Note: Values presented with a less than symbol (<) indicate concentrations were not observed at or above the laboratory reporting limit.
Values presented in bold typeface exceed their respective COGCC - Regulatory Limits (Table 910-1).

TABLE 2
GROUNDWATER ELEVATION AND PARAMETERS SUMMARY
STATE M36-3, M36-5, 6-36, 7-36, AND 8-36
PRODUCTION TANK RELEASE
40.444259/-104.845056
SW¼ NW¼ SEC. 36, T6N, R67W, 6 PM
WELD COUNTY, COLORADO
REMEDATION # 8495

Sample Location (Latitude/Longitude)	Date	Top of Casing Elevation (feet)	Depth to Groundwater (feet)	Groundwater Elevation (feet)	Dissolved Oxygen (mg/L)	Temperature (°C)	pH	Specific Conductivity (µS/cm)	Oxidation Reduction Potential (mV)
MW-01 (40.4442984192 / -104.845097276)	10/09/14	98.56	7.53	91.03	NM	NM	NM	NM	NM
	03/19/15		5.93	92.63	0.93	8.39	7.15	2395	-181.0
MW-02 (40.4443738812 / -104.845307671)	10/09/14	102.11	9.00	93.11	NM	NM	NM	NM	NM
	03/19/15		8.69	93.42	0.65	8.91	6.96	2326	144.6
MW-03 (40.4445555982 / -104.845110257)	10/09/14	99.43	8.36	91.07	NM	NM	NM	NM	NM
	03/19/15		5.91	93.52	0.86	9.69	6.97	2119	58.4
MW-04 (40.4442042132 / -104.845320992)	10/09/14	98.03	7.83	90.20	NM	NM	NM	NM	NM
	03/19/15		5.21	92.82	0.60	9.75	7.02	2338	160.3
MW-05 (40.4440557552 / -104.845269544)	10/09/14	97.38	6.33	91.05	NM	NM	NM	NM	NM
	03/19/15		4.68	92.70	0.73	9.28	7.06	2380	166.7
MW-06 (40.4446472222 / -104.844883852)	10/09/14	100.00	8.06	91.94	NM	NM	NM	NM	NM
	03/19/15		6.50	93.50	0.97	9.88	7.06	2404	174.7
MW-07 (40.4448577152 / -104.844490124)	10/09/14	97.63	7.85	89.78	NM	NM	NM	NM	NM
	03/19/15		7.18	90.45	0.87	8.70	7.07	2642	175.4
MW-08 (40.4446005042 / -104.844397129)	10/10/15	100.28	7.56	92.72	NM	NM	NM	NM	NM
	03/19/15		7.14	93.14	0.84	8.45	6.84	2665	184.3
MW-09 (40.4450361712 / -104.844249498)	10/09/14	95.94	7.32	88.62	NM	NM	NM	NM	NM
	03/19/15		6.61	89.33	0.98	10.78	6.96	2762	183.4
MW-10 (40.4449045162 / -104.844167041)	10/10/15	100.72	8.20	92.52	NM	NM	NM	NM	NM
	03/19/15		7.83	92.89	1.70	7.70	6.79	2964	176.5
MW-11 (40.4449911952 / -104.843986073)	10/10/15	101.64	9.37	92.27	NM	NM	NM	NM	NM
	03/19/15		9.01	92.63	2.91	7.70	6.93	2085	163.0
MW-12 (40.4448427762 / -104.843944947)	10/10/15	100.31	7.75	92.56	NM	NM	NM	NM	NM
	03/19/15		7.40	92.91	2.74	7.18	6.62	4684	84.6

TABLE 2
GROUNDWATER ELEVATION AND PARAMETERS SUMMARY
STATE M36-3, M36-5, 6-36, 7-36, AND 8-36
PRODUCTION TANK RELEASE
40.444259/-104.845056
SW¼ NW¼ SEC. 36, T6N, R67W, 6 PM
WELD COUNTY, COLORADO
REMEDATION # 8495

Sample Location (Latitude/Longitude)	Date	Top of Casing Elevation (feet)	Depth to Groundwater (feet)	Groundwater Elevation (feet)	Dissolved Oxygen (mg/L)	Temperature (°C)	pH	Specific Conductivity (µS/cm)	Oxidation Reduction Potential (mV)
MW-13 (40.4449321532 / -104.843770355)	10/10/15	100.40	8.05	92.35	NM	NM	NM	NM	NM
	03/19/15		7.78	92.62	2.86	7.35	6.89	2193	231.6
MW-14 (40.4447805932 / -104.843778042)	10/10/15	99.91	7.01	92.90	NM	NM	NM	NM	NM
	03/19/15		6.66	93.25	2.53	7.59	6.81	2985	222.7
MW-15 (40.444233392 / -104.844971393)	03/19/15	101.84	8.59	93.25	1.28	8.85	7.07	2376	92.3
MW-16 (40.4440443272 / -104.845069258)	03/19/15	102.38	9.09	93.29	0.54	9.17	7.01	2254	24.0
MW-17 (40.4441232392 / -104.844816831)	03/19/15	102.15	8.90	93.25	2.17	8.79	7.10	2460	53.5
MW-18 (40.4443902552 / -104.844642734)	03/19/15	101.52	8.38	93.14	0.75	9.10	7.02	2389	105.0
NOTES: NM - Not Measured °F = degrees Fahrenheit mg/L = milligrams per liter µS/cm = microsiemens per centimeter mV = millivolts									

TABLE 3
GROUNDWATER ANALYTICAL RESULTS SUMMARY
STATE M36-3, M36-5, 6-36, 7-36, AND 8-36
PRODUCTION TANK RELEASE
40.444259/-104.845056
SW¼ NW¼ SEC. 36, T6N, R67W, 6 PM
WELD COUNTY, COLORADO
REMEDATION # 8495

Sample Location (Latitude/Longitude)	Date	Benzene (µg/L)	Toluene (µg/L)	Ethylbenzene (µg/L)	Total Xylenes (µg/L)
COGCC Table 910-1 Regulatory Limits (µg/L)		5	560	700	1400
GW-01 (40.444307 / -104.845131)	06/24/14	2470	1380	892	5890
Surface Pond (40.444856 / -104.843792)	06/24/14	<1.0	<1.0	<1.0	<1.0
SS-22-GW (40.444194133 / -104.844911559)	06/25/14	25.2	20.4	<4.0	<4.0
SS-23-GW (40.444381772 / -104.844747628)	06/25/14	11.1	<4.0	<4.0	<4.0
SS-24-GW (40.44458152 / -104.84470946)	06/25/14	<1.0	<1.0	<1.0	<1.0
SS-25-GW (40.444877225 / -104.844225377)	06/25/14	<1.0	<1.0	<1.0	<1.0
SS-26-GW (40.444844744 / -104.843751845)	06/25/14	<1.0	<1.0	<1.0	<1.0
SS-27-GW (40.443969064 / -104.845038769)	06/26/14	<1.0	<1.0	<1.0	<1.0
SS-28-GW (40.444048624 / -104.845071473)	06/26/14	<1.0	<1.0	<1.0	<1.0
SS-29-GW (40.444024316 / -104.844993703)	06/26/14	<1.0	<1.0	<1.0	<1.0
SS-31-GW (40.444159548 / -104.844851054)	06/26/14	<1.0	<1.0	<1.0	<1.0
SS-32-GW (40.444401989 / -104.844780656)	06/26/14	29.1	2.8	<1.0	4.6
SS-33-GW (40.444344011 / -104.844668852)	06/26/14	<1.0	<1.0	<1.0	<1.0
SS-34-GW (40.444609565 / -104.844739569)	06/27/14	1.6	<1.0	<1.0	<1.0
SS-35-GW (40.444527337 / -104.844575814)	06/27/14	<1.0	<1.0	<1.0	<1.0
SS-36-GW (40.444761834 / -104.844498553)	06/27/14	<1.0	<1.0	<1.0	<1.0
SS-37-GW (40.444662913 / -104.844327325)	06/27/14	<1.0	<1.0	<1.0	<1.0
SS-38-GW (40.444873363 / -104.844334236)	06/27/14	<1.0	<1.0	<1.0	<1.0
SS-39-GW (40.444815128 / -104.844179929)	06/27/14	3.5	<1.0	<1.0	<1.0
SS-40-GW (40.444992512 / -104.844184169)	06/27/14	7.8	<1.0	<1.0	<1.0
SS-41-GW (40.444958298 / -104.843786868)	06/27/14	<1.0	<1.0	<1.0	<1.0
SS-42-GW (40.444778035 / -104.843763308)	06/27/14	<4.0	<4.0	<4.0	<4.0
SS-43-GW (40.44488832 / -104.843703757)	06/27/14	<1.0	<1.0	<1.0	<1.0
SS-44-GW (40.444624838 / -104.843855268)	06/27/14	<1.0	<1.0	<1.0	<1.0
SS-45-GW (40.444495488 / -104.843933899)	06/27/14	<1.0	<1.0	<1.0	<1.0
SS-46-GW (40.444300036 / -104.844105806)	06/27/14	<1.0	<1.0	<1.0	<1.0
SS-47-GW (40.445050479 / -104.844150918)	06/30/14	<1.0	<1.0	<1.0	<1.0
SS-48-GW (40.44501361 / -104.844059742)	06/30/14	<1.0	<1.0	<1.0	<1.0
TBSB-01-GW (40.444470809 / -104.845024968)	06/30/14	68.1	<1.0	1.8	15.0
TBSB-02-GW (40.444347698 / -104.845291808)	06/30/14	<1.0	<1.0	<1.0	<1.0
TBSB-03-GW (40.444167498 / -104.845295342)	06/30/14	<1.0	<1.0	<1.0	<1.0

TABLE 3
GROUNDWATER ANALYTICAL RESULTS SUMMARY
STATE M36-3, M36-5, 6-36, 7-36, AND 8-36
PRODUCTION TANK RELEASE
40.444259/-104.845056
SW¼ NW¼ SEC. 36, T6N, R67W, 6 PM
WELD COUNTY, COLORADO
REMEDIATION # 8495

Sample Location (Latitude/Longitude)	Date	Benzene (µg/L)	Toluene (µg/L)	Ethylbenzene (µg/L)	Total Xylenes (µg/L)
COGCC Table 910-1 Regulatory Limits (µg/L)		5	560	700	1400
MW-01 (40.4442984192 / -104.845097276)	10/09/14	17.7	<1.0	<1.0	4.4
	03/19/15	1.7	<1.0	<1.0	<1.0
MW-02 (40.4443738812 / -104.845307671)	10/09/14	<1.0	<1.0	<1.0	<1.0
	03/19/15	<1.0	<1.0	<1.0	<1.0
MW-03 (40.4445555982 / -104.845110257)	10/09/14	<1.0	<1.0	<1.0	<1.0
	03/19/15	11.9	<1.0	<1.0	<1.0
	04/01/15	12.9	<1.0	<1.0	<1.0
MW-04 (40.4442042132 / -104.845320992)	10/09/14	<1.0	<1.0	<1.0	<1.0
	03/19/15	<1.0	<1.0	<1.0	<1.0
MW-05 (40.4440557552 / -104.845269544)	10/09/14	<1.0	<1.0	<1.0	<1.0
	03/19/15	<1.0	<1.0	<1.0	<1.0
MW-06 (40.4446472222 / -104.844883852)	10/09/14	<1.0	<1.0	<1.0	<1.0
	03/19/15	<1.0	<1.0	<1.0	<1.0
MW-07 (40.4448577152 / -104.844490124)	10/09/14	<1.0	<1.0	<1.0	<1.0
	03/19/15	<1.0	<1.0	<1.0	<1.0
MW-08 (40.4446005042 / -104.844397129)	10/10/14	<1.0	<1.0	<1.0	<1.0
	03/19/15	<1.0	<1.0	<1.0	<1.0
MW-09 (40.4450361712 / -104.844249498)	10/09/14	<1.0	<1.0	<1.0	<1.0
	03/19/15	<1.0	<1.0	<1.0	<1.0
MW-10 (40.4449045162 / -104.844167041)	10/10/14	<1.0	<1.0	<1.0	<1.0
	03/19/15	<1.0	<1.0	<1.0	<1.0
MW-11 (40.4449911952 / -104.843986073)	10/10/14	<1.0	<1.0	<1.0	<1.0
	03/19/15	<1.0	<1.0	<1.0	<1.0
MW-12 (40.4448427762 / -104.843944947)	10/10/14	<1.0	<1.0	<1.0	<1.0
	03/19/15	<1.0	<1.0	<1.0	<1.0
MW-13 (40.4449321532 / -104.843770355)	10/10/14	<1.0	<1.0	<1.0	<1.0
	03/19/15	<1.0	<1.0	<1.0	<1.0
MW-14 (40.4447805932 / -104.843778042)	10/10/14	<1.0	<1.0	<1.0	<1.0
	03/19/15	<1.0	<1.0	<1.0	<1.0
MW-15 (40.444233392 / -104.844971393)	03/19/15	<1.0	<1.0	<1.0	<1.0
MW-16 (40.4440443272 / -104.845069258)	03/19/15	<1.0	<1.0	<1.0	<1.0
MW-17 (40.4441232392 / -104.844816831)	03/19/15	<1.0	<1.0	<1.0	<1.0
MW-18 (40.4443902552 / -104.844642734)	03/19/15	<1.0	<1.0	<1.0	<1.0
COGCC = Colorado Oil and Gas Conservation Commission µg/L - micrograms per liter Note: Values presented with a less than symbol (<) indicate concentrations were not observed at or above the laboratory reporting limit. Values presented in bold typeface exceed their respective COGCC - Regulatory Limits (Table 910-1).					

FIGURES

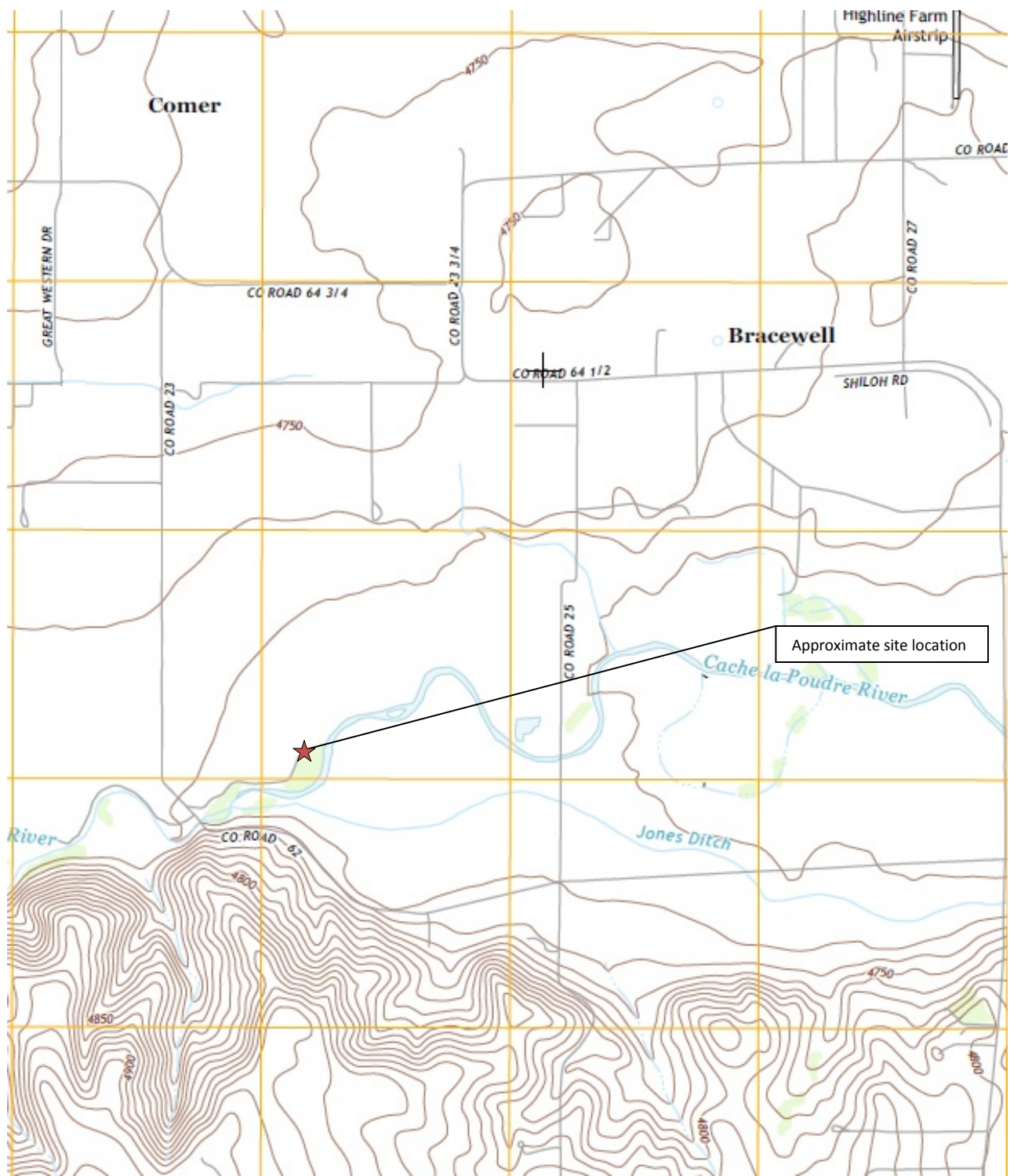
Figure 1: Topographic Site Location Map

Figure 2: Aerial Site Location Map

Figure 3: Monitoring Well Soil Analytical Map

Figure 4: Groundwater Elevation Map (03/19/15)

Figure 5: Groundwater Sample Location Map (03/19/15)



Topographic Site Location Map
 State M36-3, M36-5, 6-36, 7-36, and 8-36
 Production Tank Release
 40.444259/-104.845056
 SW¼ NW¼ SEC.36 T6N R67W 6PM
 Weld County, Colorado
 Remediation # 8495



EAGLE
 ENVIRONMENTAL
 CONSULTING, INC.

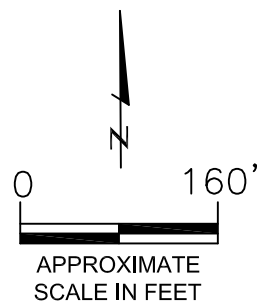
Source: USGS 7.5 Minute Topographic
 Map, Bracewell, CO Quadrangle 2013

Figure 1



LEGEND

COORDINATES OF INFRASTRUCTURE AND RELEASE LOCATION:
 RELEASE LOCATION (40.444259/-104.845056)
 TANK BATTERY (40.444274/-104.845117)



AERIAL SITE LOCATION MAP
 STATE M36-3, M36-5, 6-36, 7-36, and 8-36
 PRODUCTION TANK RELEASE
 40.444259 / -104.845056
 SW1/4 NW1/4 SEC.36 T6N R67W 6PM
 WELD COUNTY, COLORADO
 REMEDIATION # 8495

DATE: 07/08/14

FIG. NO.

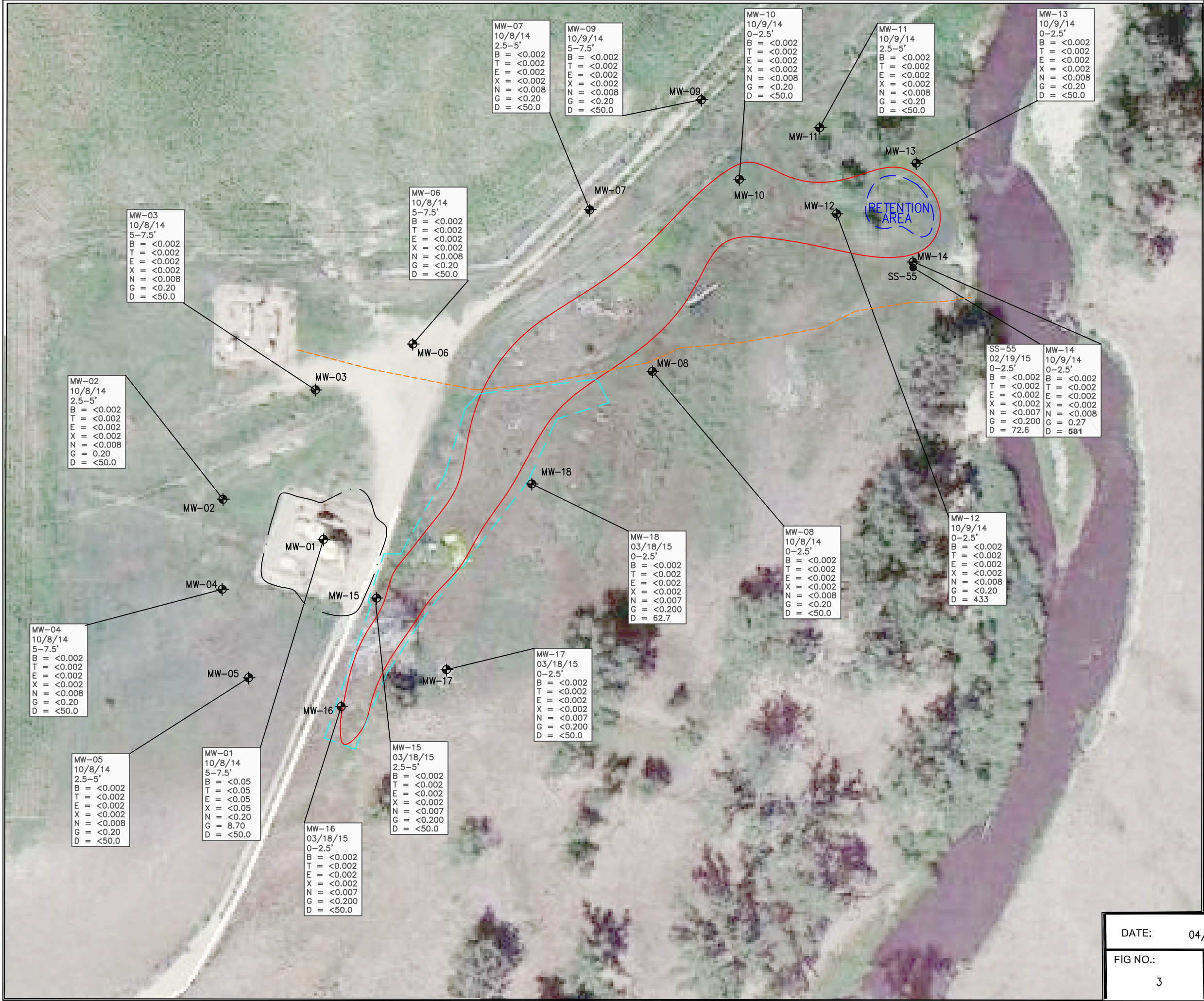
2

DRAWN BY:

mce



EAGLE
 ENVIRONMENTAL
 CONSULTING, INC.
 4101 INCA STREET, DENVER, CO 80211
 Ph: 303-433-0479 • F: 303-325-5449



LEGEND

APPROXIMATE EXTENTS OF STATE M36-3, M36-5, 6-36 7-36, AND 8-36 TANK BATTERY EXCAVATION

APPROXIMATE EXTENT OF SURFACE STAINING

APPROXIMATE LOCATION OF ABANDONED DCP MIDSTREAM UNDERGROUND UTILITY

APPROXIMATE LOWER EXCAVATION EXTENTS

APPROXIMATE MONITORING WELL LOCATIONS

APPROXIMATE SOIL BORING LOCATION

PARAMETERS

SAMPLE LOCATION

DATE

DEPTH (INCHES)

B = BENZENE (mg/kg)

T = TOLUENE (mg/kg)

E = ETHYLBENZENE (mg/kg)

X = TOTAL XYLENES (mg/kg)

N = NAPHTHALENE (mg/kg)

G = TPH - GRO (mg/kg)

D = TPH - DRO (mg/kg)

mg/kg = MILLIGRAMS PER KILOGRAM

TPH - GRO = TOTAL PETROLEUM HYDROCARBONS - GASOLINE RANGE ORGANICS

TPH - DRO = TOTAL PETROLEUM HYDROCARBONS - DIESEL RANGE ORGANICS

NOTE: VALUES PRESENTED IN **BOLD** TYPEFACE EXCEED THE COGCC CONCENTRATION LEVELS PRESENTED IN TABLE 910-1.

COGCC = COLORADO OIL AND GAS CONSERVATION COMMISSION.

VALUES PRESENTED WITH A LESS THAN SYMBOL (<) INDICATE CONCENTRATIONS WERE NOT OBSERVED AT OR ABOVE THE LABORATORY REPORTING LIMIT.

SOIL SAMPLE SS-55 WAS COLLECTED AS A CONFIRMATION SOIL SAMPLE FOR THE TPH-DRO EXCEEDANCE IN MONITORING WELL MW-14.

0

60'

APPROXIMATE SCALE IN FEET

MONITORING WELL SOIL SAMPLE ANALYTICAL MAP

STATE M36-3, M36-5, 6-36, 7-36, AND 8-36 PRODUCTION TANK RELEASE

40.444259/-104.845056

SW1/4 NW1/4 SEC.36 T6N R67W 6 PM

WELD COUNTY, COLORADO

REMEDATION # 8495

DATE: 04/07/15

FIG NO.: 3

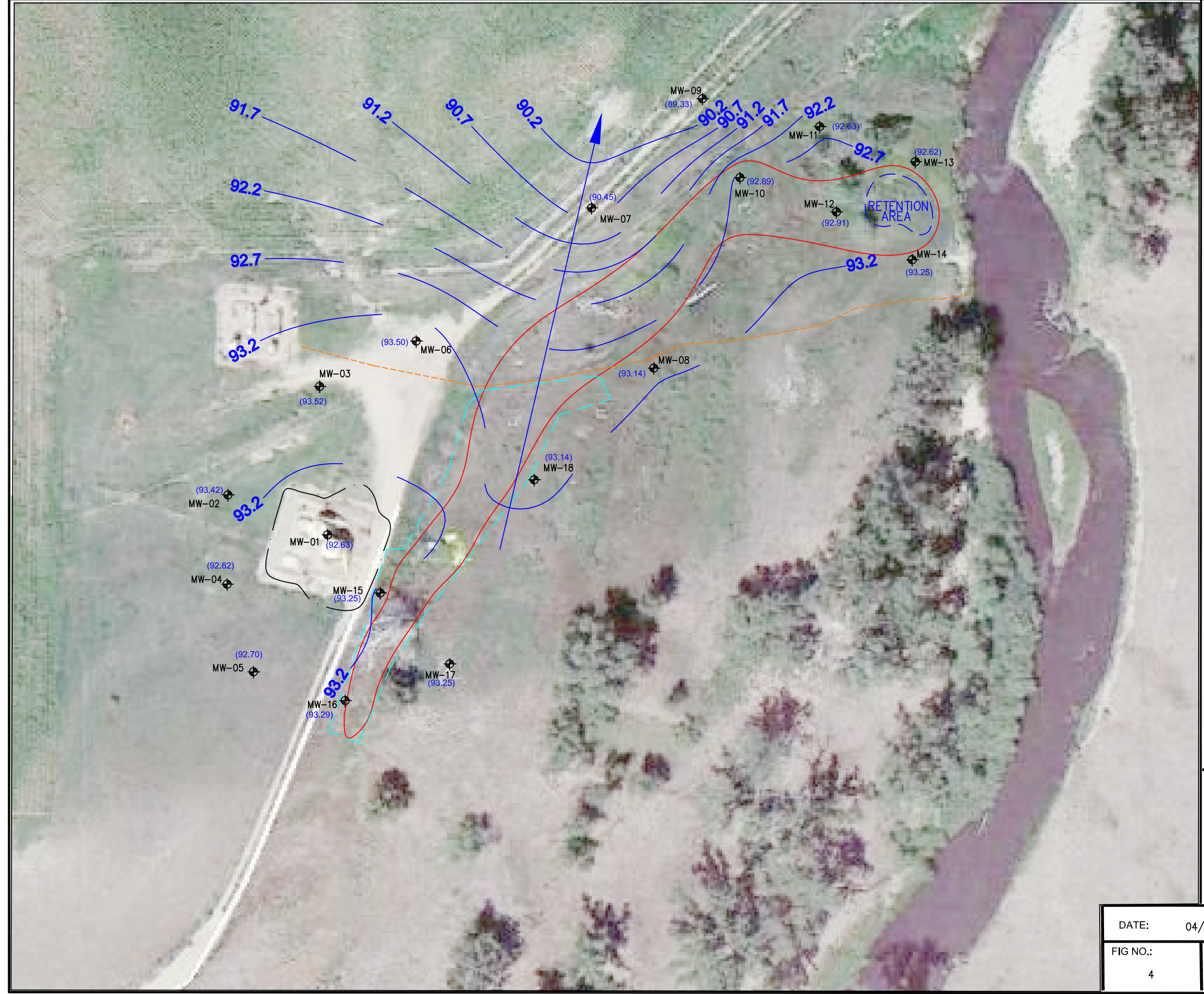
DRAWN BY: amn

EAGLE

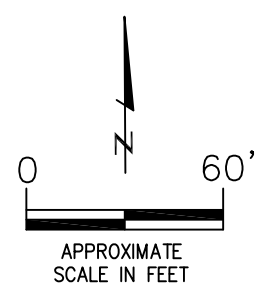
ENVIRONMENTAL CONSULTING, INC.

4101 INCA STREET, DENVER, CO 80211


Ph: 303-433-0479 • F: 303-325-5449

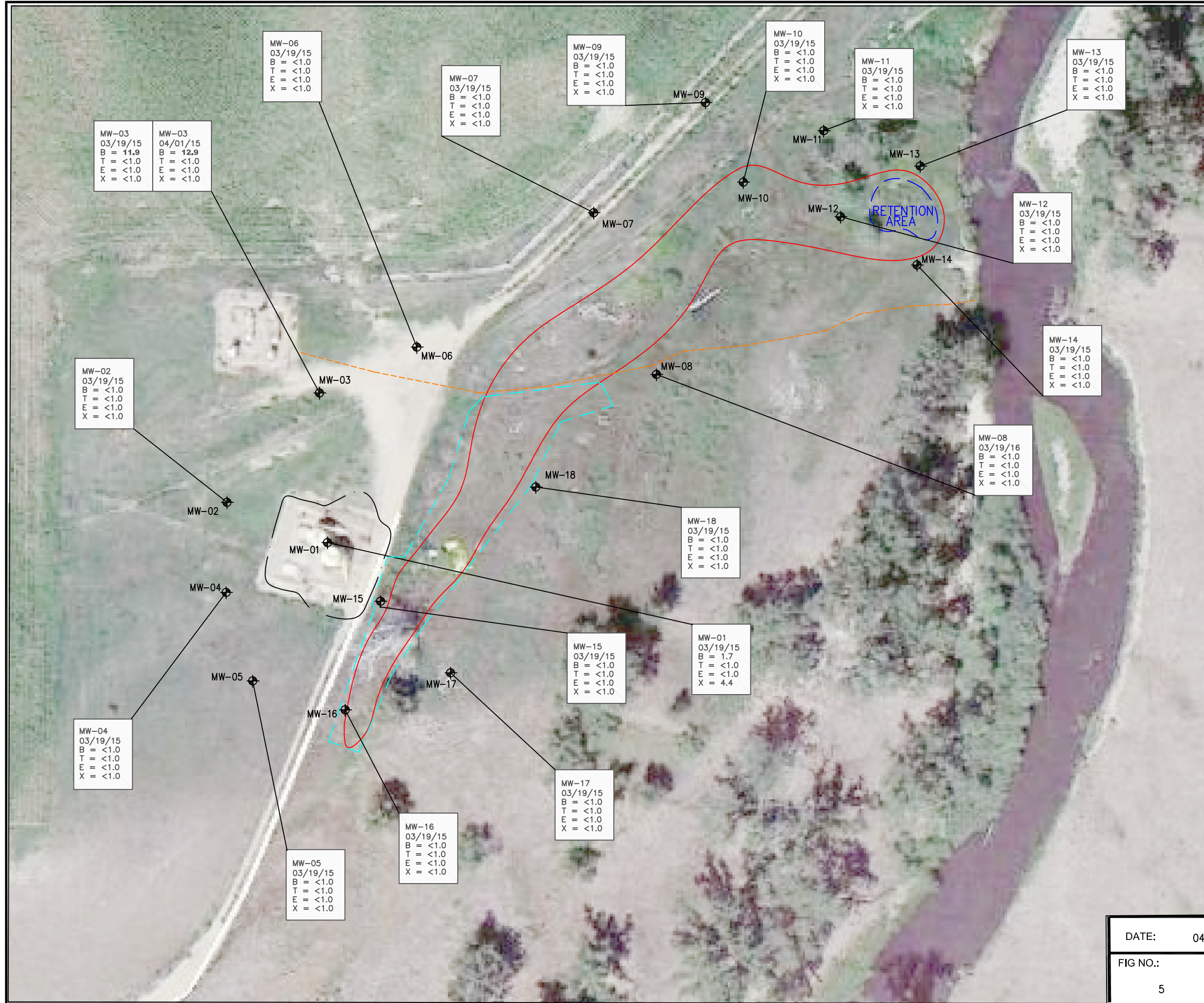


- LEGEND
- APPROXIMATE EXTENTS OF STATE M36-3, M36-5, 6-36 7-36, AND 8-36 TANK BATTERY EXCAVATION
 - APPROXIMATE EXTENT OF SURFACE STAINING
 - - - APPROXIMATE LOCATION OF ABANDONED DCP MIDSTREAM UNDERGROUND UTILITY
 - - - APPROXIMATE LOWER EXCAVATION EXTENTS
 - ⊕ APPROXIMATE MONITORING WELL LOCATIONS
 - (98.25) GROUNDWATER ELEVATION (FT.)
 - - - INFERRED GROUNDWATER ELEVATION CONTOUR (FT.)
 - APPROXIMATE GROUNDWATER FLOW DIRECTION
 - FT. = FEET



GROUNDWATER ELEVATION MAP
(03/19/15)
STATE M36-3, M36-5, 6-36, 7-36, AND 8-36
PRODUCTION TANK RELEASE
40.444259/-104.845056
SW1/4 NW1/4 SEC.36 T6N R67W 6 PM
WELD COUNTY, COLORADO
REMEDATION # 8495

DATE:	04/07/15	 EAGLE ENVIRONMENTAL CONSULTING, INC. <small>4101 INCA STREET, DENVER, CO 80211 Ph: 303-433-0479 • F: 303-325-5449</small>
FIG NO.:	4	
DRAWN BY:	amn	



LEGEND

- APPROXIMATE EXTENTS OF STATE M36-3, M36-5, 6-36 7-36, AND 8-36 TANK BATTERY EXCAVATION
- APPROXIMATE EXTENT OF SURFACE STAINING
- APPROXIMATE LOCATION OF ABANDONED DCP MIDSTREAM UNDERGROUND UTILITY
- APPROXIMATE LOWER EXCAVATION EXTENTS
- APPROXIMATE MONITORING WELL LOCATIONS

PARAMETERS

SAMPLE LOCATION DATE

B = BENZENE (µg/L)
T = TOLUENE (µg/L)
E = ETHYLBENZENE (µg/L)
X = TOTAL XYLENES (µg/L)

µg/L = MICROGRAMS PER LITER

NOTE: VALUES PRESENTED IN BOLD TYPEFACE EXCEED THE COGCC CONCENTRATION LEVELS PRESENTED IN TABLE 910-1.

COGCC = COLORADO OIL AND GAS CONSERVATION COMMISSION.

VALUES PRESENTED WITH A LESS THAN SYMBOL (<) INDICATE CONCENTRATIONS WERE NOT OBSERVED AT OR ABOVE THE LABORATORY REPORTING LIMIT.

NOTE: TANK BATTERY LAYOUT HAS BEEN MODIFIED SINCE AERIAL WAS TAKEN. AERIAL NOT UP TO DATE WITH CURRENT TANK BATTERY LAYOUT.

MONITORING WELL MW-03 WAS SAMPLED ON 3/19/15 AND 4/1/15

APPROXIMATE SCALE IN FEET

GROUNDWATER SAMPLE LOCATION MAP
(03/19/15)

STATE M36-3, M36-5, 6-36, 7-36, AND 8-36
PRODUCTION TANK RELEASE
40.444259/-104.845056
SW1/4 NW1/4 SEC.36 T6N R67W 6 PM
WELD COUNTY, COLORADO
REMEDATION # 8495

DATE:	04/07/15
FIG NO.:	5
DRAWN BY:	amn

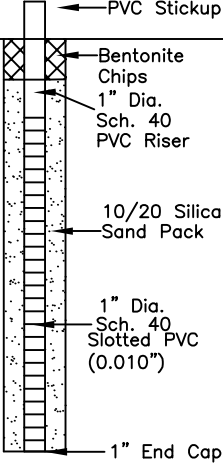
EAGLE
ENVIRONMENTAL
CONSULTING, INC.
4101 INCA STREET, DENVER, CO 80211
Ph: 303-433-0479 • F: 303-325-5449

ATTACHMENT A


Boring Logs/Monitoring Well Completion Diagrams

Boring Log/Well Completion Diagram: MW-15

PAGE 1 OF 1

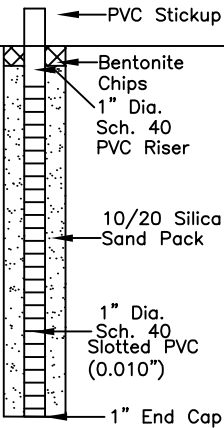
DEPTH (FT)	LITHOLOGY	SAMPLE				OVM/OVA (PPM)	BLOW COUNT (per 0.5 FT)	DEPTH (FT)	WELL CONSTRUCTION DETAIL	COMMENTS
	DESCRIPTION	GRAPHIC LOG	TYPE	NUMBER	RECOVERY %					
0	(0-6.5') sandy clayey SILT - dark brown, moist to wet, soft, low plasticity, moderately graded with little clay and trace fine-grained sand, N/O, N/S.	ML	GP	1	70	1.3	N/A			H2O @~4.5-5'
						1.5				
5	(6.5-10') gravelly SAND - brown and tan, wet, loose, subrounded to rounded, fine to coarse grained, poorly graded with little to trace gravel, N/O, N/S.	SP	GP	2	20	2.6	N/A	5		
						2.0				
10	BoB @ 10'							10		HC - Hydrocarbon BoB - Bottom of Boring N/O - no odor N/S - no staining TOC - top of casing bgs - below ground surface
30										

30

START/COMPLETION DATE: 03/18/2015		SAND PACK INTERVAL (FEET): 1-10	
PROJECT: STATE M36-3, M36-5, 6-36, 7-36, 8-36		BENTONITE/GROUT INTERVAL (FEET): 0-1	
LOGGED BY: A. NEWBERRY		WELL SCREEN INTERVAL (FEET): 2-10	
DRILLING COMPANY/EQUIPMENT: EECI/GEOPROBE		WELL DIAMETER (INCHES): 1	
BORING DEPTH (FEET): 10	WELL DEPTH (FEET): 10	 <div>EAGLE ENVIRONMENTAL CONSULTING, INC. 4101 INCA STREET, DENVER, CO 80211 Ph: 303-433-0479 • F: 303-325-5449</div>	
PID INSTRUMENT: MiniRAE 3000 - PID #6			
TIME STARTED/COMPLETED: 905/920			
SAMPLE COLLECTION DEPTH (FEET)/TIME: 2.5-5/917			

Boring Log/Well Completion Diagram: MW-16

PAGE 1 OF 1

DEPTH (FT)	LITHOLOGY	SAMPLE				OVM/OVA (PPM)	BLOW COUNT (per 0.5 FT)	DEPTH (FT)	WELL CONSTRUCTION DETAIL	COMMENTS
	DESCRIPTION	GRAPHIC LOG	TYPE	NUMBER	RECOVERY %					
0	(0-4.5') clayey SILT - dark brown, moist to wet, soft, low to moderate plasticity, moderately graded with little to trace clay, N/O, N/S	ML	GP	1	75	1.1	N/A			H2O @~3.5'
5	(4.5-6') SAND - brown and tan, wet, loose, sub-rounded to rounded, fine to medium grained, poorly graded, N/O, N/S					1.6				
6	(6-10') gravelly SAND - brown and tan, wet, loose, sub-rounded, fine to coarse grained, poorly graded with little fine-coarse grained gravel, N/O, N/S.	SP	GP	2	50	2.7	N/A	5		
10						2.3		10		
10	BoB @ 10'							10		
15								15		
20								20		
25								25		
30								30		

HC - Hydrocarbon
BoB - Bottom of Boring
N/O - no odor
N/S - no staining
TOC - top of casing
bgs - below ground surface

START/COMPLETION DATE: 03/18/2015

SAND PACK INTERVAL (FEET): 0.5-10

PROJECT: STATE M36-3, M36-5, 6-36, 7-36, 8-36

BENTONITE/GROUT INTERVAL (FEET): 0-0.5

LOGGED BY: A. NEWBERRY

WELL SCREEN INTERVAL (FEET): 1-9

DRILLING COMPANY/EQUIPMENT: EECI/GEOPROBE

WELL DIAMETER (INCHES): 1

BORING DEPTH (FEET): 10

WELL DEPTH (FEET): 9

PID INSTRUMENT: MiniRAE 3000 - PID #6

TIME STARTED/COMPLETED: 845/900

SAMPLE COLLECTION DEPTH (FEET)/TIME: 0-2.5/850

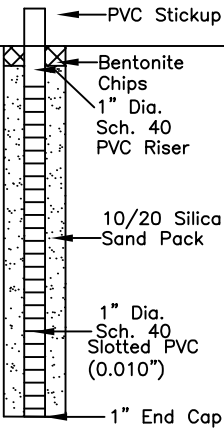


EAGLE
ENVIRONMENTAL
CONSULTING, INC.

4101 INCA STREET, DENVER, CO 80211
Ph: 303-433-0479 • F: 303-325-5449

Boring Log/Well Completion Diagram: MW-17

PAGE 1 OF 1

DEPTH (FT)	LITHOLOGY	SAMPLE				OVM/OVA (PPM)	BLOW COUNT (per 0.5 FT)	DEPTH (FT)	WELL CONSTRUCTION DETAIL	COMMENTS
	DESCRIPTION	GRAPHIC LOG	TYPE	NUMBER	RECOVERY %					
0	(0-4') clayey sandy SILT - dark brown, moist to wet, soft, low to moderate plasticity, poorly graded with few fine grained sand and trace clay, N/O, N/S	ML	GP	1	80	2.4	N/A			H2O @~2.75'
						1.1				
5	(4-10') gravelly SAND - brown and tan, wet, loose, sub-rounded, fine to coarse grained, poorly graded with trace fine-coarse grained gravel, N/O, N/S.	SP	GP	2	50	1.7	N/A	5		
						1.3				
10	BoB @ 10'							10		
15								15		
20								20		
25								25		
30								30		

HC - Hydrocarbon
BoB - Bottom of Boring
N/O - no odor
N/S - no staining
TOC - top of casing
bgs - below ground surface

START/COMPLETION DATE: 03/18/2015

SAND PACK INTERVAL (FEET): 0.5-10

PROJECT: STATE M36-3, M36-5, 6-36, 7-36, 8-36

BENTONITE/GROUT INTERVAL (FEET): 0-0.5

LOGGED BY: A. NEWBERRY

WELL SCREEN INTERVAL (FEET): 1-9

DRILLING COMPANY/EQUIPMENT: EECI/GEOPROBE

WELL DIAMETER (INCHES): 1

BORING DEPTH (FEET): 10

WELL DEPTH (FEET): 9

PID INSTRUMENT: MiniRAE 3000 - PID #6

TIME STARTED/COMPLETED: 925/940

SAMPLE COLLECTION DEPTH (FEET)/TIME: 0-2.5/930

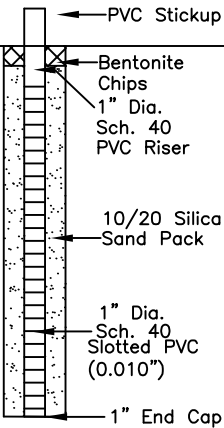


EAGLE
ENVIRONMENTAL
CONSULTING, INC.

4101 INCA STREET, DENVER, CO 80211
Ph: 303-433-0479 • F: 303-325-5449

Boring Log/Well Completion Diagram: MW-18

PAGE 1 OF 1

DEPTH (FT)	LITHOLOGY	SAMPLE				OVM/OVA (PPM)	BLOW COUNT (per 0.5 FT)	DEPTH (FT)	WELL CONSTRUCTION DETAIL	COMMENTS
	DESCRIPTION	GRAPHIC LOG	TYPE	NUMBER	RECOVERY %					
0	(0-3') clayey sandy SILT - dark brown, moist to wet, soft, low to moderate plasticity, moderately graded with few fine grained sand and trace clay, N/O, N/S	ML	GP	1	75	2.9	N/A			H2O @~2.5'
5	(3-10') gravelly SAND - brown and tan, wet, loose, sub-rounded, fine to coarse grained, poorly graded with trace fine-coarse grained gravel, N/O, N/S.	SP	GP	2	40	1.7	N/A	5		
						2.0	N/A			
						0.8	N/A			
10	BoB @ 10'							10		
15								15		
20								20		
25								25		
30								30		HC - Hydrocarbon BoB - Bottom of Boring N/O - no odor N/S - no staining TOC - top of casing bgs - below ground surface

START/COMPLETION DATE: 03/18/2015

SAND PACK INTERVAL (FEET): 0.5-10

PROJECT: STATE M36-3, M36-5, 6-36, 7-36, 8-36

BENTONITE/GROUT INTERVAL (FEET): 0-0.5

LOGGED BY: A. NEWBERRY

WELL SCREEN INTERVAL (FEET): 1-9

DRILLING COMPANY/EQUIPMENT: EECI/GEOPROBE

WELL DIAMETER (INCHES): 1

BORING DEPTH (FEET): 10

WELL DEPTH (FEET): 9

PID INSTRUMENT: MiniRAE 3000 - PID #6

TIME STARTED/COMPLETED: 945/1002

SAMPLE COLLECTION DEPTH (FEET)/TIME: 0-2.5/951



EAGLE
ENVIRONMENTAL
CONSULTING, INC.

4101 INCA STREET, DENVER, CO 80211
Ph: 303-433-0479 • F: 303-325-5449

ATTACHMENT B

Laboratory Analytical Reports



March 20, 2015

Eagle Environmental Consulting, Inc.

Martin C Eckert III

4101 Inca Street

Denver

CO 80211

**Project Name - Noble - State M36-3, M36-5,
6-36,7-36 and 8-36**

Project Number - [none]

Attached are your analytical results for Noble - State M36-3, M36-5, 6-36,7-36 and 8-36 received by Origins Laboratory, Inc. March 18, 2015. This project is associated with Origins project number X503229-01.

The analytical results in the following report were analyzed under the guidelines of EPA Methods. These methods are identified as follows; "SW" are defined in SW-846, "EPA" are defined in 40CFR part 136 and "SM" are defined in the most current revision of Standard Methods For the Examination of Water and Wastewater.

The analytical results apply specifically to the samples and analyses specified per the attached Chain of Custody. As such, this report shall not be reproduced except in full, without the written approval of Origin's laboratory.

Unless otherwise noted, the analytical results for all soil samples are reported on a wet weight basis. All analytical analyses were performed under NELAP guidelines unless noted by a data qualifier.

Any holding time exceedances, deviations from the method specifications or deviations from Origins Laboratory's Standard Operating Procedures are outlined in the case narrative.

Thank you for selecting Origins for your analytical needs. Please contact us with any questions concerning this report, or if we can help with anything at all.

Origins Laboratory, Inc.
303.433.1322
o-squad@oelabinc.com



1725 Elk Place, Denver, CO 80211 | Phone: 303.433.1322 | Fax: 303.265.9645

Eagle Environmental Consulting, Inc.

4101 Inca Street

Denver CO 80211

Martin C Eckert III

Project Number: [none]

Project: Noble - State M36-3, M36-5, 6-36,7-36
and 8-36

CROSS REFERENCE REPORT

Sample ID	Laboratory ID	Matrix	Date Sampled	Date Received
MW-15 @ 2.5-5'	X503229-01	Soil	March 18, 2015 9:17	03/18/2015 13:19
MW-16 @ 0-2.5'	X503229-02	Soil	March 18, 2015 8:50	03/18/2015 13:19
MW-17 @ 0-2.5'	X503229-03	Soil	March 18, 2015 9:30	03/18/2015 13:19
MW-18 @ 0-2.5'	X503229-04	Soil	March 18, 2015 9:51	03/18/2015 13:19

Origins Laboratory, Inc.



*The results in this report apply to the samples analyzed in
accordance with the chain of custody document. This
analytical report must be reproduced in its entirety.*

Eagle Environmental Consulting, Inc.
4101 Inca Street
Denver CO 80211

Martin C Eckert III
Project Number: [none]
Project: Noble - State M36-3, M36-5, 6-36, 7-36 and 8-36

www.originslaboratory.com

X503229

page / of /

ORIGINS
LABORATORY, INC

Client: Eagle Env. Consulting, Inc.
Address: 4101 Inca Street
Telephone Number: (303) 433-0479
Email Address: McC3@eagle-enviro.com

Project Manager: Martin Eckert III
Project Name: State M36-3, M36-5, 6-36, 7-36, + 8-36
Project Number: ---
Samples Collected By: A. Numborg

Sample ID Description	Date Sampled	Time Sampled	# of Containers	Preservative				Matrix			Analysis	Sample Instructions	
				Unpreserved	HCl	HNO ₃	Other	Groundwater	Soil	Air Summa #			Other
MW-15 @ 2.5'-5'	3/18/15	917	2	X					X			X	1
MW-16 @ 0.25'		850	1									X	2
MW-17 @ 0.25'		930	1									X	3
MW-18 @ 0.25'		951	1									X	4
													5
													6
													7
													8
													9
													10

Relinquished By: [Signature] Date: 3/18/15 Time: 1319
Relinquished By: [Signature] Date: 3/18/15 Time: 1319

Turnaround Time: Same Day ☐ 24 Hr ☐ 48 Hr ☐ 72 Hr ☒ Standard

Date Results Needed: Noble

Temp Received: 1.8

Hold samples for P4H5-75D

Origins Laboratory, Inc.

Jefe Pellegrini

The results in this report apply to the samples analyzed in accordance with the chain of custody document. This analytical report must be reproduced in its entirety.

Eagle Environmental Consulting, Inc.

4101 Inca Street

Denver CO 80211

Martin C Eckert III

Project Number: [none]

Project: Noble - State M36-3, M36-5, 6-36, 7-36 and 8-36

Origins Laboratory

F-012207-01-R1
Effective Date: 01/09/12

Sample Receipt Checklist

Origins Work Order: X503229

Client: Eagle Env.

Client Project ID: Noble - State

Checklist Completed by: Jen Pellegrini

Shipped Via: H/D
(UPS, FedEx, Hand Delivered, Pick-up, etc.)

Date/time completed: 3/19/15

Airbill #: N/A

Matrix(s) Received: (Check all that apply): ☒ Soil/Solid ☒ Water ☐ Other: _____

Cooler Number/Temperature: 1 / 1.8 °C _____ / _____ °C _____ / _____ °C (Describe)

Thermometer ID: T003

Requirement Description	Yes	No	N/A	Comments (if any)
If samples require cooling, was the temperature between 0°C to ≤ 6°C ⁽¹⁾ ?	<input checked="" type="checkbox"/>			
Is there ice present (document if blue ice is used)	<input checked="" type="checkbox"/>			
Are custody seals present on cooler? (if so, document in comments if they are signed and dated, broken or intact)		<input checked="" type="checkbox"/>		
Are custody seals present on each sample container? (if so, document in comments if they are signed and dated, broken or intact)		<input checked="" type="checkbox"/>		
Were all samples received intact ⁽¹⁾ ?	<input checked="" type="checkbox"/>			
Was adequate sample volume provided ⁽¹⁾ ?	<input checked="" type="checkbox"/>			
Are short holding time analytes or samples with HTs due within 48 hours present ⁽¹⁾ ?		<input checked="" type="checkbox"/>		
Is a chain-of-custody (COC) present and filled out completely ⁽¹⁾ ?	<input checked="" type="checkbox"/>			
Does the COC agree with the number and type of sample bottles received ⁽¹⁾ ?	<input checked="" type="checkbox"/>			
Do the sample IDs on the bottle labels match the COC ⁽¹⁾ ?	<input checked="" type="checkbox"/>			
Is the COC properly relinquished by the client with date and time recorded ⁽¹⁾ ?	<input checked="" type="checkbox"/>			
For volatiles in water – is there headspace (> ¼ inch bubble) present? If yes, contact client and note in narrative.		<input checked="" type="checkbox"/>	<input checked="" type="checkbox"/>	
Are samples preserved that require preservation and was it checked ⁽¹⁾ ? (note ID of confirmation instrument used in comments) / (preservation is not confirmed for subcontracted analyses in order to insure sample integrity)(pH < 2 for samples preserved with HNO ₃ , HCL, H ₂ SO ₄) / (pH > 10 for samples preserved with NaAsO ₂ +NaOH, ZnAc+NaOH)		<input checked="" type="checkbox"/>	<input checked="" type="checkbox"/>	
Additional Comments (if any):				

⁽¹⁾If NO, then contact the client before proceeding with analysis and note date/time and person contacted as well as the corrective action to in the additional comments (above) and the case narrative.

Reviewed by (Project Manager)

3/19/15
Date/Time Reviewed

Origins Laboratory, Inc.

Jen Pellegrini

The results in this report apply to the samples analyzed in accordance with the chain of custody document. This analytical report must be reproduced in its entirety.

Eagle Environmental Consulting, Inc.

4101 Inca Street

Denver CO 80211

Martin C Eckert III

Project Number: [none]

Project: Noble - State M36-3, M36-5, 6-36,7-36
and 8-36**MW-15 @ 2.5-5'****3/18/2015 9:17:00AM**

Analyte	Result	Reporting Limit	Units	Dilution	Batch	Prepared	Analyzed	Notes
---------	--------	--------------------	-------	----------	-------	----------	----------	-------

Origins Laboratory, Inc.
X503229-01 (Soil)**Diesel Range Organics (DRO/TEPH) by EPA 8015C**

Diesel (C10-C28)	ND	50.0	mg/kg	1	5C19007	03/19/2015	03/19/2015
------------------	----	------	-------	---	---------	------------	------------

Surrogate: o-Terphenyl	83.6 %	59-131			"	"	"
------------------------	--------	--------	--	--	---	---	---

GBTEX + Napthalene by 8260C

Gasoline Range Hydrocarbons	ND	0.200	mg/kg	1	5C19014	03/19/2015	03/19/2015
-----------------------------	----	-------	-------	---	---------	------------	------------

Benzene	ND	0.002	"	"	"	"	"
---------	----	-------	---	---	---	---	---

Toluene	ND	0.002	"	"	"	"	"
---------	----	-------	---	---	---	---	---

Ethylbenzene	ND	0.002	"	"	"	"	"
--------------	----	-------	---	---	---	---	---

Xylenes, total	ND	0.002	"	"	"	"	"
----------------	----	-------	---	---	---	---	---

Napthalene	ND	0.007	"	"	"	"	"
------------	----	-------	---	---	---	---	---

Surrogate: 1,2-Dichloroethane-d4	116 %	70-130			"	"	"
----------------------------------	-------	--------	--	--	---	---	---

Surrogate: Toluene-d8	102 %	70-130			"	"	"
-----------------------	-------	--------	--	--	---	---	---

Surrogate: 4-Bromofluorobenzene	99.9 %	70-130			"	"	"
---------------------------------	--------	--------	--	--	---	---	---

Origins Laboratory, Inc.



The results in this report apply to the samples analyzed in
accordance with the chain of custody document. This
analytical report must be reproduced in its entirety.

Eagle Environmental Consulting, Inc.

4101 Inca Street

Denver CO 80211

Martin C Eckert III

Project Number: [none]

Project: Noble - State M36-3, M36-5, 6-36,7-36
and 8-36

MW-16 @ 0-2.5'

3/18/2015 8:50:00AM

Analyte	Result	Reporting Limit	Units	Dilution	Batch	Prepared	Analyzed	Notes
---------	--------	--------------------	-------	----------	-------	----------	----------	-------

Origins Laboratory, Inc.

X503229-02 (Soil)

Diesel Range Organics (DRO/TEPH) by EPA 8015C

Diesel (C10-C28)	ND	50.0	mg/kg	1	5C19007	03/19/2015	03/19/2015
------------------	----	------	-------	---	---------	------------	------------

Surrogate: o-Terphenyl	88.1 %	59-131			"	"	"
------------------------	--------	--------	--	--	---	---	---

GBTEX + Napthalene by 8260C

Gasoline Range Hydrocarbons	ND	0.200	mg/kg	1	5C19014	03/19/2015	03/19/2015
-----------------------------	----	-------	-------	---	---------	------------	------------

Benzene	ND	0.002	"	"	"	"	"
---------	----	-------	---	---	---	---	---

Toluene	ND	0.002	"	"	"	"	"
---------	----	-------	---	---	---	---	---

Ethylbenzene	ND	0.002	"	"	"	"	"
--------------	----	-------	---	---	---	---	---

Xylenes, total	ND	0.002	"	"	"	"	"
----------------	----	-------	---	---	---	---	---

Napthalene	ND	0.007	"	"	"	"	"
------------	----	-------	---	---	---	---	---

Surrogate: 1,2-Dichloroethane-d4	128 %	70-130			"	"	"
----------------------------------	-------	--------	--	--	---	---	---

Surrogate: Toluene-d8	103 %	70-130			"	"	"
-----------------------	-------	--------	--	--	---	---	---

Surrogate: 4-Bromofluorobenzene	93.2 %	70-130			"	"	"
---------------------------------	--------	--------	--	--	---	---	---

Origins Laboratory, Inc.



The results in this report apply to the samples analyzed in accordance with the chain of custody document. This analytical report must be reproduced in its entirety.

Eagle Environmental Consulting, Inc.

4101 Inca Street

Denver CO 80211

Martin C Eckert III

Project Number: [none]

Project: Noble - State M36-3, M36-5, 6-36,7-36 and 8-36

MW-17 @ 0-2.5'

3/18/2015 9:30:00AM

Analyte	Result	Reporting Limit	Units	Dilution	Batch	Prepared	Analyzed	Notes
---------	--------	-----------------	-------	----------	-------	----------	----------	-------

Origins Laboratory, Inc.

X503229-03 (Soil)

Diesel Range Organics (DRO/TEPH) by EPA 8015C

Diesel (C10-C28)	ND	50.0	mg/kg	1	5C19007	03/19/2015	03/19/2015
------------------	----	------	-------	---	---------	------------	------------

Surrogate: o-Terphenyl	81.5 %	59-131			"	"	"
------------------------	--------	--------	--	--	---	---	---

GBTEX + Napthalene by 8260C

Gasoline Range Hydrocarbons	ND	0.200	mg/kg	1	5C19014	03/19/2015	03/19/2015
-----------------------------	----	-------	-------	---	---------	------------	------------

Benzene	ND	0.002	"	"	"	"	"
---------	----	-------	---	---	---	---	---

Toluene	ND	0.002	"	"	"	"	"
---------	----	-------	---	---	---	---	---

Ethylbenzene	ND	0.002	"	"	"	"	"
--------------	----	-------	---	---	---	---	---

Xylenes, total	ND	0.002	"	"	"	"	"
----------------	----	-------	---	---	---	---	---

Naphthalene	ND	0.007	"	"	"	"	"
-------------	----	-------	---	---	---	---	---

Surrogate: 1,2-Dichloroethane-d4	120 %	70-130			"	"	"
----------------------------------	-------	--------	--	--	---	---	---

Surrogate: Toluene-d8	96.2 %	70-130			"	"	"
-----------------------	--------	--------	--	--	---	---	---

Surrogate: 4-Bromofluorobenzene	86.3 %	70-130			"	"	"
---------------------------------	--------	--------	--	--	---	---	---

Origins Laboratory, Inc.



The results in this report apply to the samples analyzed in accordance with the chain of custody document. This analytical report must be reproduced in its entirety.

Eagle Environmental Consulting, Inc.

4101 Inca Street

Denver CO 80211

Martin C Eckert III

Project Number: [none]

Project: Noble - State M36-3, M36-5, 6-36,7-36
and 8-36

MW-18 @ 0-2.5'

3/18/2015 9:51:00AM

Analyte	Result	Reporting Limit	Units	Dilution	Batch	Prepared	Analyzed	Notes
---------	--------	--------------------	-------	----------	-------	----------	----------	-------

Origins Laboratory, Inc.

X503229-04 (Soil)

Diesel Range Organics (DRO/TEPH) by EPA 8015C

Diesel (C10-C28)	62.7	50.0	mg/kg	1	5C19007	03/19/2015	03/19/2015
------------------	------	------	-------	---	---------	------------	------------

Surrogate: o-Terphenyl	80.2 %	59-131			"	"	"
------------------------	--------	--------	--	--	---	---	---

GBTEX + Napthalene by 8260C

Gasoline Range Hydrocarbons	ND	0.200	mg/kg	1	5C19014	03/19/2015	03/19/2015
-----------------------------	----	-------	-------	---	---------	------------	------------

Benzene	ND	0.002	"	"	"	"	"
---------	----	-------	---	---	---	---	---

Toluene	ND	0.002	"	"	"	"	"
---------	----	-------	---	---	---	---	---

Ethylbenzene	ND	0.002	"	"	"	"	"
--------------	----	-------	---	---	---	---	---

Xylenes, total	ND	0.002	"	"	"	"	"
----------------	----	-------	---	---	---	---	---

Napthalene	ND	0.007	"	"	"	"	"
------------	----	-------	---	---	---	---	---

Surrogate: 1,2-Dichloroethane-d4	124 %	70-130			"	"	"
----------------------------------	-------	--------	--	--	---	---	---

Surrogate: Toluene-d8	111 %	70-130			"	"	"
-----------------------	-------	--------	--	--	---	---	---

Surrogate: 4-Bromofluorobenzene	84.6 %	70-130			"	"	"
---------------------------------	--------	--------	--	--	---	---	---

Origins Laboratory, Inc.



The results in this report apply to the samples analyzed in accordance with the chain of custody document. This analytical report must be reproduced in its entirety.

Eagle Environmental Consulting, Inc.

4101 Inca Street

Denver CO 80211

Martin C Eckert III

Project Number: [none]

Project: Noble - State M36-3, M36-5, 6-36,7-36
and 8-36

Volatile Organic Compounds by GC/MS SW846 8260C - Quality Control
Origins Laboratory, Inc.

Analyte	Result	Reporting Limit	Units	Spike Level	Source Result	%REC	%REC Limits	RPD	RPD Limit	Notes
---------	--------	-----------------	-------	-------------	---------------	------	-------------	-----	-----------	-------

Batch 5C19014 - EPA 5030 (soil)

Blank (5C19014-BLK1)

Prepared: 03/19/2015 Analyzed: 03/19/2015

Gasoline Range Hydrocarbons	ND	0.200	mg/kg							
Benzene	ND	0.002	"							
Toluene	ND	0.002	"							
Ethylbenzene	ND	0.002	"							
Xylenes, total	ND	0.002	"							
Naphthalene	ND	0.007	"							
Surrogate: 1,2-Dichloroethane-d4	73		ug/kg	62.5		116	70-130			
Surrogate: Toluene-d8	64		"	62.5		102	70-130			
Surrogate: 4-Bromofluorobenzene	63		"	62.5		101	70-130			

Origins Laboratory, Inc.



The results in this report apply to the samples analyzed in accordance with the chain of custody document. This analytical report must be reproduced in its entirety.

Eagle Environmental Consulting, Inc.

4101 Inca Street

Denver CO 80211

Martin C Eckert III

Project Number: [none]

Project: Noble - State M36-3, M36-5, 6-36,7-36
and 8-36

Volatile Organic Compounds by GC/MS SW846 8260C - Quality Control
Origins Laboratory, Inc.

Analyte	Result	Reporting Limit	Units	Spike Level	Source Result	%REC	%REC Limits	RPD	RPD Limit	Notes
Batch 5C19014 - EPA 5030 (soil)										
LCS (5C19014-BS1)					Prepared: 03/19/2015 Analyzed: 03/19/2015					
Benzene	0.094	0.002	mg/kg	0.100		93.6	70-130			
Toluene	0.091	0.002	"	0.100		91.3	70-130			
Ethylbenzene	0.084	0.002	"	0.100		83.9	70-130			
m,p-Xylene	0.169	0.004	"	0.200		84.6	70-130			
o-Xylene	0.085	0.002	"	0.100		85.5	70-130			
Naphthalene	0.090	0.007	"	0.100		89.7	70-130			
Surrogate: 1,2-Dichloroethane-d4	75		ug/kg	62.5		120	70-130			
Surrogate: Toluene-d8	64		"	62.5		102	70-130			
Surrogate: 4-Bromofluorobenzene	65		"	62.5		104	70-130			

Origins Laboratory, Inc.



The results in this report apply to the samples analyzed in accordance with the chain of custody document. This analytical report must be reproduced in its entirety.

Eagle Environmental Consulting, Inc.

4101 Inca Street

Denver CO 80211

Martin C Eckert III

Project Number: [none]

Project: Noble - State M36-3, M36-5, 6-36, 7-36 and 8-36

Volatile Organic Compounds by GC/MS SW846 8260C - Quality Control
Origins Laboratory, Inc.

Analyte	Result	Reporting Limit	Units	Spike Level	Source Result	%REC	%REC Limits	RPD	RPD Limit	Notes
---------	--------	-----------------	-------	-------------	---------------	------	-------------	-----	-----------	-------

Batch 5C19014 - EPA 5030 (soil)

Matrix Spike (5C19014-MS1)		Source: X503229-01			Prepared: 03/19/2015 Analyzed: 03/19/2015					
Benzene	0.083	0.002	mg/kg	0.100	ND	83.3	70-130			
Toluene	0.082	0.002	"	0.100	ND	82.2	70-130			
Ethylbenzene	0.075	0.002	"	0.100	ND	75.1	70-130			
m,p-Xylene	0.152	0.004	"	0.200	ND	75.9	70-130			
o-Xylene	0.078	0.002	"	0.100	ND	78.0	70-130			
Naphthalene	0.065	0.007	"	0.100	ND	65.3	70-130			QM-07
Surrogate: 1,2-Dichloroethane-d4	69		ug/kg	62.5		110	70-130			
Surrogate: Toluene-d8	62		"	62.5		99.2	70-130			
Surrogate: 4-Bromofluorobenzene	58		"	62.5		93.2	70-130			

Origins Laboratory, Inc.



The results in this report apply to the samples analyzed in accordance with the chain of custody document. This analytical report must be reproduced in its entirety.

Eagle Environmental Consulting, Inc.

4101 Inca Street

Denver CO 80211

Martin C Eckert III

Project Number: [none]

Project: Noble - State M36-3, M36-5, 6-36,7-36
and 8-36

Volatile Organic Compounds by GC/MS SW846 8260C - Quality Control
Origins Laboratory, Inc.

Analyte	Result	Reporting Limit	Units	Spike Level	Source Result	%REC	%REC Limits	RPD	RPD Limit	Notes
---------	--------	-----------------	-------	-------------	---------------	------	-------------	-----	-----------	-------

Batch 5C19014 - EPA 5030 (soil)

Matrix Spike Dup (5C19014-MSD1)		Source: X503229-01			Prepared: 03/19/2015 Analyzed: 03/19/2015					
Benzene	0.080	0.002	mg/kg	0.100	ND	80.1	70-130	3.84	20	
Toluene	0.073	0.002	"	0.100	ND	72.8	70-130	12.2	20	
Ethylbenzene	0.065	0.002	"	0.100	ND	65.1	70-130	14.3	20	QM-07
m,p-Xylene	0.135	0.004	"	0.200	ND	67.5	70-130	11.7	20	QM-07
o-Xylene	0.071	0.002	"	0.100	ND	71.3	70-130	8.92	20	
Naphthalene	0.063	0.007	"	0.100	ND	63.3	70-130	3.20	20	QM-07
Surrogate: 1,2-Dichloroethane-d4	72		ug/kg	62.5		115	70-130			
Surrogate: Toluene-d8	63		"	62.5		101	70-130			
Surrogate: 4-Bromofluorobenzene	63		"	62.5		101	70-130			

Origins Laboratory, Inc.



The results in this report apply to the samples analyzed in accordance with the chain of custody document. This analytical report must be reproduced in its entirety.

Eagle Environmental Consulting, Inc.

4101 Inca Street

Denver CO 80211

Martin C Eckert III

Project Number: [none]

Project: Noble - State M36-3, M36-5, 6-36,7-36
and 8-36

Volatile Organic Compounds by GC/MS SW846 8260C - Quality Control

Origins Laboratory, Inc.

Analyte	Result	Reporting Limit	Units	Spike Level	Source Result	%REC	%REC Limits	RPD	RPD Limit	Notes
---------	--------	-----------------	-------	-------------	---------------	------	-------------	-----	-----------	-------

Extractable Petroleum Hydrocarbons by 8015C - Quality Control

Origins Laboratory, Inc.

Analyte	Result	Reporting Limit	Units	Spike Level	Source Result	%REC	%REC Limits	RPD	RPD Limit	Notes
---------	--------	-----------------	-------	-------------	---------------	------	-------------	-----	-----------	-------

Batch 5C19007 - EPA 3580

Blank (5C19007-BLK1)

Prepared: 03/19/2015 Analyzed: 03/19/2015

Diesel (C10-C28) ND 50.0 mg/kg

Surrogate: o-Terphenyl 50 " 50.0 101 59-131

LCS (5C19007-BS1)

Prepared: 03/19/2015 Analyzed: 03/19/2015

Diesel (C10-C28) 997 50.0 mg/kg 1000 99.7 64-121

Surrogate: o-Terphenyl 48 " 50.0 96.7 59-131

Matrix Spike (5C19007-MS1)

Source: X503215-01

Prepared: 03/19/2015 Analyzed: 03/19/2015

Diesel (C10-C28) 1460 50.0 mg/kg 1000 620 83.8 53-125

Surrogate: o-Terphenyl 48 " 50.0 95.7 59-131

Matrix Spike Dup (5C19007-MSD1)

Source: X503215-01

Prepared: 03/19/2015 Analyzed: 03/19/2015

Diesel (C10-C28) 1410 50.0 mg/kg 1000 620 79.0 53-125 3.36 20

Surrogate: o-Terphenyl 48 " 50.0 95.2 59-131

Origins Laboratory, Inc.



The results in this report apply to the samples analyzed in accordance with the chain of custody document. This analytical report must be reproduced in its entirety.

Eagle Environmental Consulting, Inc.

4101 Inca Street

Denver CO 80211

Martin C Eckert III

Project Number: [none]

Project: Noble - State M36-3, M36-5, 6-36, 7-36
and 8-36

Notes and Definitions

QM-07 The spike recovery was outside acceptance limits for the MS and/or MSD. The batch was accepted based on acceptable LCS recovery.

ND Analyte NOT DETECTED at or above the reporting limit

RPD Relative Percent Difference

All soil results are reported at a wet weight basis.

Origins Laboratory, Inc.



The results in this report apply to the samples analyzed in accordance with the chain of custody document. This analytical report must be reproduced in its entirety.

Jen Pellegrini For Noelle Doyle Mathis, President



March 24, 2015

Eagle Environmental Consulting, Inc.

Martin C Eckert III

4101 Inca Street

Denver

CO 80211

**Project Name - Noble - State M36-3, M36-5,
6-36,7-36 and 8-36**

Project Number - [none]

Attached are your analytical results for Noble - State M36-3, M36-5, 6-36,7-36 and 8-36 received by Origins Laboratory, Inc. March 20, 2015. This project is associated with Origins project number X503248-01.

The analytical results in the following report were analyzed under the guidelines of EPA Methods. These methods are identified as follows; "SW" are defined in SW-846, "EPA" are defined in 40CFR part 136 and "SM" are defined in the most current revision of Standard Methods For the Examination of Water and Wastewater.

The analytical results apply specifically to the samples and analyses specified per the attached Chain of Custody. As such, this report shall not be reproduced except in full, without the written approval of Origin's laboratory.

Unless otherwise noted, the analytical results for all soil samples are reported on a wet weight basis. All analytical analyses were performed under NELAP guidelines unless noted by a data qualifier.

Any holding time exceedances, deviations from the method specifications or deviations from Origins Laboratory's Standard Operating Procedures are outlined in the case narrative.

Thank you for selecting Origins for your analytical needs. Please contact us with any questions concerning this report, or if we can help with anything at all.

Origins Laboratory, Inc.
303.433.1322
o-squad@oelabinc.com



1725 Elk Place, Denver, CO 80211 | Phone: 303.433.1322 | Fax: 303.265.9645

Eagle Environmental Consulting, Inc.

4101 Inca Street

Denver CO 80211

Martin C Eckert III

Project Number: [none]

Project: Noble - State M36-3, M36-5, 6-36,7-36
and 8-36

CROSS REFERENCE REPORT

Sample ID	Laboratory ID	Matrix	Date Sampled	Date Received
MW-01	X503248-01	Water	March 19, 2015 16:45	03/20/2015 08:10
MW-02	X503248-02	Water	March 19, 2015 15:27	03/20/2015 08:10
MW-03	X503248-03	Water	March 19, 2015 15:15	03/20/2015 08:10
MW-04	X503248-04	Water	March 19, 2015 15:40	03/20/2015 08:10
MW-05	X503248-05	Water	March 19, 2015 15:52	03/20/2015 08:10
MW-06	X503248-06	Water	March 19, 2015 14:41	03/20/2015 08:10
MW-07	X503248-07	Water	March 19, 2015 13:48	03/20/2015 08:10
MW-08	X503248-08	Water	March 19, 2015 14:16	03/20/2015 08:10
MW-09	X503248-09	Water	March 19, 2015 13:34	03/20/2015 08:10
MW-10	X503248-10	Water	March 19, 2015 12:50	03/20/2015 08:10

Origins Laboratory, Inc.



*The results in this report apply to the samples analyzed in
accordance with the chain of custody document. This
analytical report must be reproduced in its entirety.*

Eagle Environmental Consulting, Inc.

4101 Inca Street

Denver CO 80211

Martin C Eckert III

Project Number: [none]

Project: Noble - State M36-3, M36-5, 6-36,7-36
and 8-36

CROSS REFERENCE REPORT

Sample ID	Laboratory ID	Matrix	Date Sampled	Date Received
MW-11	X503248-11	Water	March 19, 2015 12:38	03/20/2015 08:10
MW-12	X503248-12	Water	March 19, 2015 12:24	03/20/2015 08:10
MW-13	X503248-13	Water	March 19, 2015 12:02	03/20/2015 08:10
MW-14	X503248-14	Water	March 19, 2015 12:13	03/20/2015 08:10
MW-15	X503248-15	Water	March 19, 2015 16:30	03/20/2015 08:10
MW-16	X503248-16	Water	March 19, 2015 16:09	03/20/2015 08:10
MW-17	X503248-17	Water	March 19, 2015 16:19	03/20/2015 08:10
MW-18	X503248-18	Water	March 19, 2015 14:27	03/20/2015 08:10

Origins Laboratory, Inc.



*The results in this report apply to the samples analyzed in
accordance with the chain of custody document. This
analytical report must be reproduced in its entirety.*

Eagle Environmental Consulting, Inc.
4101 Inca Street
Denver CO 80211

Martin C Eckert III
Project Number: [none]
Project: Noble - State M36-3, M36-5, 6-36, 7-36 and 8-36

www.originslaboratory.com

X503248

page 1 of 2

ORIGINS
LABORATORY, INC

Client: EAGLE ENV CONSULTING
Address: 4101 INCA ST
DENVER, CO 80211
Telephone Number: 303 433 0479
Email Address: mce@eagle-enviro.com

Project Manager: MARTIN ECKERT III
Project Name: STATE M36-3, M36-5, 6-36, 7-36, AND 8-36
Project Number:
Samples Collected By: A ROMANSKY

1725 Elk Place | Denver, CO 80211 | Phone: 303.433.1322 | Fax: 303.265.9645

Sample ID Description	Date Sampled	Time Sampled	# of Containers	Preservative				Matrix			Analysis		Sample Instructions
				Unpreserved	HCl	HNO ₃	Other	Groundwater	Soil	Air Summa #	Other	BTEX	
MW-01	3/19/15	1645	3		X			X					1
MW-02		1527											2
MW-03		1515											3
MW-04		1516											4
MW-05		1552											5
MW-06		1441											6
MW-07		1348											7
MW-08		1416											8
MW-09		1334											9
MW-10		1250											10
Relinquished By:	Date: 3/20/15	Time: 810						Received By:	Date: 3/20/15	Time: 0810		Turnaround Time: Same Day <input type="checkbox"/> 24 Hr <input type="checkbox"/> 48 Hr <input type="checkbox"/> 72 Hr <input checked="" type="checkbox"/> Standard	
Relinquished By:	Date:	Time:						Received By:	Date:	Time:			

Date Results Needed: ~~Noble~~

Temp Received: 21

Origins Laboratory, Inc.

Jefe Pellegrini

The results in this report apply to the samples analyzed in accordance with the chain of custody document. This analytical report must be reproduced in its entirety.

Eagle Environmental Consulting, Inc.
4101 Inca Street
Denver CO 80211

Martin C Eckert III
Project Number: [none]
Project: Noble - State M36-3, M36-5, 6-36, 7-36 and 8-36

www.originslaboratory.com

X 503248

page 2 of 2

ORIGINS
LABORATORY, INC

Client: EAGLE ENV CONSULTING
Address: 4101 INCA ST
DENVER, CO 80211
Telephone Number: 303 433-0474
Email Address: mce3@eagle-env.com

Project Manager: MARTIN ECKERT III
Project Name: STATE M36-3, M36-5, 6-36, 7-36 AND 8-36
Project Number: _____
Samples Collected By: A ROMANOFF

Sample ID Description	Date Sampled	Time Sampled	# of Containers	Preservative			Matrix			Analysis	Sample Instructions
				Unpreserved	HCl	HNO ₃	Groundwater	Soil	Air Summa Canister #		
MW-11	3/14/15	1236	3	X			X			Flux	1
MW-12		1224									2
MW-13		1202									3
MW-14		1213									4
MW-15		1630									5
MW-16		1609									6
MW-17		1619									7
MW-18		1427									8
											9
											10
											11
											12
											13
											14
											15
											16
											17
											18
											19
											20
											21
											22
											23
											24
											25
											26
											27
											28
											29
											30
											31
											32
											33
											34
											35
											36
											37
											38
											39
											40
											41
											42
											43
											44
											45
											46
											47
											48
											49
											50
											51
											52
											53
											54
											55
											56
											57
											58
											59
											60
											61
											62
											63
											64
											65
											66
											67
											68
											69
											70
											71
											72
											73
											74
											75
											76
											77
											78
											79
											80
											81
											82
											83
											84
											85
											86
											87
											88
											89
											90
											91
											92
											93
											94
											95
											96
											97
											98
											99
											100

Date Results Needed: 3/20/15

Temp Received: 21

Date Results Needed: 3/20/15

Origins Laboratory, Inc.

Jefe Pellegrini

The results in this report apply to the samples analyzed in accordance with the chain of custody document. This analytical report must be reproduced in its entirety.

Eagle Environmental Consulting, Inc.

4101 Inca Street

Denver CO 80211

Martin C Eckert III

Project Number: [none]

Project: Noble - State M36-3, M36-5, 6-36, 7-36 and 8-36

Origins Laboratory

F-012207-01-R1
Effective Date: 01/09/12

Sample Receipt Checklist

Origins Work Order: XSUB248

Client: Eagle Env.

Client Project ID: State (Noble)

Checklist Completed by: Jen Pellegrini

Shipped Via: H/D

(UPS, FedEx, Hand Delivered, Pick-up, etc.)

Date/time completed: 3/20/15

Airbill #: N/A

Matrix(s) Received: (Check all that apply): Soil/Solid X Water Other:

Cooler Number/Temperature: 1121 °C 1 °C 1 °C (Describe)

Thermometer ID: T003

Requirement Description	Yes	No	N/A	Comments (if any)
If samples require cooling, was the temperature between 0°C to ≤ 6°C ⁽¹⁾ ?	X			
Is there ice present (document if blue ice is used)	X			
Are custody seals present on cooler? (if so, document in comments if they are signed and dated, broken or intact)		X		
Are custody seals present on each sample container? (if so, document in comments if they are signed and dated, broken or intact)		X		
Were all samples received intact ⁽¹⁾ ?	X			
Was adequate sample volume provided ⁽¹⁾ ?	X			
Are short holding time analytes or samples with HTs due within 48 hours present ⁽¹⁾ ?		X		
Is a chain-of-custody (COC) present and filled out completely ⁽¹⁾ ?	X			
Does the COC agree with the number and type of sample bottles received ⁽¹⁾ ?	X			
Do the sample IDs on the bottle labels match the COC ⁽¹⁾ ?	X			
Is the COC properly relinquished by the client with date and time recorded ⁽¹⁾ ?	X			
For volatiles in water — is there headspace (> ¼ inch bubble) present? If yes, contact client and note in narrative.		X		
Are samples preserved that require preservation and was it checked ⁽¹⁾ ? (note ID of confirmation instrument used in comments) / (preservation is not confirmed for subcontracted analyses in order to insure sample integrity)/ (pH < 2 for samples preserved with HNO ₃ , HCL, H ₂ SO ₄) / (pH > 10 for samples preserved with NaAsO ₂ +NaOH, ZnAc+NaOH)	X			HCL
Additional Comments (if any):				

⁽¹⁾ If NO, then contact the client before proceeding with analysis and note date/time and person contacted as well as the corrective action to in the additional comments (above) and the case narrative.

Reviewed by (Project Manager)

3/23/15
Date/Time Reviewed

Origins Laboratory, Inc.

Jen Pellegrini

The results in this report apply to the samples analyzed in accordance with the chain of custody document. This analytical report must be reproduced in its entirety.

Eagle Environmental Consulting, Inc.

4101 Inca Street

Denver CO 80211

Martin C Eckert III

Project Number: [none]

Project: Noble - State M36-3, M36-5, 6-36,7-36
and 8-36

MW-01

3/19/2015 4:45:00PM

Analyte	Result	Reporting Limit	Units	Dilution	Batch	Prepared	Analyzed	Notes
---------	--------	--------------------	-------	----------	-------	----------	----------	-------

Origins Laboratory, Inc.

X503248-01 (Water)

BTEX by EPA 8260C

Benzene	1.7	1.0	ug/L	1	5C20011	03/20/2015	03/21/2015
Toluene	ND	1.0	"	"	"	"	"
Ethylbenzene	ND	1.0	"	"	"	"	"
Xylenes, total	ND	1.0	"	"	"	"	"

Surrogate: 1,2-Dichloroethane-d4	88.9 %	87.3-113			"	"	"
Surrogate: Toluene-d8	100 %	90.9-108			"	"	"
Surrogate: 4-Bromofluorobenzene	99.8 %	88.6-111			"	"	"

Origins Laboratory, Inc.



The results in this report apply to the samples analyzed in accordance with the chain of custody document. This analytical report must be reproduced in its entirety.

Eagle Environmental Consulting, Inc.

4101 Inca Street

Denver CO 80211

Martin C Eckert III

Project Number: [none]

Project: Noble - State M36-3, M36-5, 6-36,7-36
and 8-36

MW-02

3/19/2015 3:27:00PM

Analyte	Result	Reporting Limit	Units	Dilution	Batch	Prepared	Analyzed	Notes
---------	--------	--------------------	-------	----------	-------	----------	----------	-------

Origins Laboratory, Inc.

X503248-02 (Water)

BTEX by EPA 8260C

Benzene	ND	1.0	ug/L	1	5C20011	03/20/2015	03/21/2015
Toluene	ND	1.0	"	"	"	"	"
Ethylbenzene	ND	1.0	"	"	"	"	"
Xylenes, total	ND	1.0	"	"	"	"	"

Surrogate: 1,2-Dichloroethane-d4	90.4 %	87.3-113			"	"	"
Surrogate: Toluene-d8	98.2 %	90.9-108			"	"	"
Surrogate: 4-Bromofluorobenzene	102 %	88.6-111			"	"	"

Origins Laboratory, Inc.



The results in this report apply to the samples analyzed in accordance with the chain of custody document. This analytical report must be reproduced in its entirety.

Eagle Environmental Consulting, Inc.

4101 Inca Street

Denver CO 80211

Martin C Eckert III

Project Number: [none]

Project: Noble - State M36-3, M36-5, 6-36,7-36
and 8-36

MW-03

3/19/2015 3:15:00PM

Analyte	Result	Reporting Limit	Units	Dilution	Batch	Prepared	Analyzed	Notes
---------	--------	--------------------	-------	----------	-------	----------	----------	-------

Origins Laboratory, Inc.

X503248-03 (Water)

BTEX by EPA 8260C

Benzene	11.9	1.0	ug/L	1	5C20011	03/20/2015	03/21/2015
Toluene	ND	1.0	"	"	"	"	"
Ethylbenzene	ND	1.0	"	"	"	"	"
Xylenes, total	ND	1.0	"	"	"	"	"

Surrogate: 1,2-Dichloroethane-d4

88.5 % 87.3-113

"

"

"

Surrogate: Toluene-d8

98.7 % 90.9-108

"

"

"

Surrogate: 4-Bromofluorobenzene

99.9 % 88.6-111

"

"

"

Origins Laboratory, Inc.



The results in this report apply to the samples analyzed in accordance with the chain of custody document. This analytical report must be reproduced in its entirety.

Eagle Environmental Consulting, Inc.

4101 Inca Street

Denver CO 80211

Martin C Eckert III

Project Number: [none]

Project: Noble - State M36-3, M36-5, 6-36,7-36
and 8-36

MW-04

3/19/2015 3:40:00PM

Analyte	Result	Reporting		Units	Dilution	Batch	Prepared	Analyzed	Notes
		Limit							

Origins Laboratory, Inc.

X503248-04 (Water)

BTEX by EPA 8260C

Benzene	ND	1.0	ug/L	1	5C20011	03/20/2015	03/21/2015
Toluene	ND	1.0	"	"	"	"	"
Ethylbenzene	ND	1.0	"	"	"	"	"
Xylenes, total	ND	1.0	"	"	"	"	"

Surrogate: 1,2-Dichloroethane-d4	89.5 %	87.3-113			"	"	"
Surrogate: Toluene-d8	95.9 %	90.9-108			"	"	"
Surrogate: 4-Bromofluorobenzene	97.2 %	88.6-111			"	"	"

Origins Laboratory, Inc.



The results in this report apply to the samples analyzed in accordance with the chain of custody document. This analytical report must be reproduced in its entirety.

Eagle Environmental Consulting, Inc.

4101 Inca Street

Denver CO 80211

Martin C Eckert III

Project Number: [none]

Project: Noble - State M36-3, M36-5, 6-36,7-36
and 8-36

MW-05

3/19/2015 3:52:00PM

Analyte	Result	Reporting Limit	Units	Dilution	Batch	Prepared	Analyzed	Notes
---------	--------	--------------------	-------	----------	-------	----------	----------	-------

Origins Laboratory, Inc.

X503248-05 (Water)

BTEX by EPA 8260C

Benzene	ND	1.0	ug/L	1	5C20011	03/20/2015	03/21/2015
Toluene	ND	1.0	"	"	"	"	"
Ethylbenzene	ND	1.0	"	"	"	"	"
Xylenes, total	ND	1.0	"	"	"	"	"

Surrogate: 1,2-Dichloroethane-d4	89.6 %	87.3-113			"	"	"
Surrogate: Toluene-d8	97.2 %	90.9-108			"	"	"
Surrogate: 4-Bromofluorobenzene	101 %	88.6-111			"	"	"

Origins Laboratory, Inc.



The results in this report apply to the samples analyzed in
accordance with the chain of custody document. This
analytical report must be reproduced in its entirety.

Eagle Environmental Consulting, Inc.

4101 Inca Street

Denver CO 80211

Martin C Eckert III

Project Number: [none]

Project: Noble - State M36-3, M36-5, 6-36,7-36
and 8-36

MW-06

3/19/2015 2:41:00PM

Analyte	Result	Reporting Limit	Units	Dilution	Batch	Prepared	Analyzed	Notes
---------	--------	--------------------	-------	----------	-------	----------	----------	-------

Origins Laboratory, Inc.

X503248-06 (Water)

BTEX by EPA 8260C

Benzene	ND	1.0	ug/L	1	5C20011	03/20/2015	03/21/2015
Toluene	ND	1.0	"	"	"	"	"
Ethylbenzene	ND	1.0	"	"	"	"	"
Xylenes, total	ND	1.0	"	"	"	"	"

Surrogate: 1,2-Dichloroethane-d4	88.2 %	87.3-113			"	"	"
Surrogate: Toluene-d8	99.4 %	90.9-108			"	"	"
Surrogate: 4-Bromofluorobenzene	100 %	88.6-111			"	"	"

Origins Laboratory, Inc.



The results in this report apply to the samples analyzed in accordance with the chain of custody document. This analytical report must be reproduced in its entirety.

Eagle Environmental Consulting, Inc.

4101 Inca Street

Denver CO 80211

Martin C Eckert III

Project Number: [none]

Project: Noble - State M36-3, M36-5, 6-36,7-36
and 8-36

MW-07

3/19/2015 1:48:00PM

Analyte	Result	Reporting Limit	Units	Dilution	Batch	Prepared	Analyzed	Notes
---------	--------	--------------------	-------	----------	-------	----------	----------	-------

Origins Laboratory, Inc.

X503248-07 (Water)

BTEX by EPA 8260C

Benzene	ND	1.0	ug/L	1	5C20011	03/20/2015	03/21/2015
Toluene	ND	1.0	"	"	"	"	"
Ethylbenzene	ND	1.0	"	"	"	"	"
Xylenes, total	ND	1.0	"	"	"	"	"

Surrogate: 1,2-Dichloroethane-d4

88.0 % 87.3-113

"

"

"

Surrogate: Toluene-d8

97.9 % 90.9-108

"

"

"

Surrogate: 4-Bromofluorobenzene

99.4 % 88.6-111

"

"

"

Origins Laboratory, Inc.



The results in this report apply to the samples analyzed in accordance with the chain of custody document. This analytical report must be reproduced in its entirety.

Eagle Environmental Consulting, Inc.

4101 Inca Street

Denver CO 80211

Martin C Eckert III

Project Number: [none]

Project: Noble - State M36-3, M36-5, 6-36,7-36
and 8-36

MW-08

3/19/2015 2:16:00PM

Analyte	Result	Reporting Limit	Units	Dilution	Batch	Prepared	Analyzed	Notes
---------	--------	--------------------	-------	----------	-------	----------	----------	-------

Origins Laboratory, Inc.

X503248-08 (Water)

BTEX by EPA 8260C

Benzene	ND	1.0	ug/L	1	5C20011	03/20/2015	03/21/2015
Toluene	ND	1.0	"	"	"	"	"
Ethylbenzene	ND	1.0	"	"	"	"	"
Xylenes, total	ND	1.0	"	"	"	"	"

Surrogate: 1,2-Dichloroethane-d4	91.9 %	87.3-113			"	"	"
Surrogate: Toluene-d8	99.8 %	90.9-108			"	"	"
Surrogate: 4-Bromofluorobenzene	99.2 %	88.6-111			"	"	"

Origins Laboratory, Inc.



The results in this report apply to the samples analyzed in accordance with the chain of custody document. This analytical report must be reproduced in its entirety.

Eagle Environmental Consulting, Inc.

4101 Inca Street

Denver CO 80211

Martin C Eckert III

Project Number: [none]

Project: Noble - State M36-3, M36-5, 6-36,7-36
and 8-36

MW-09

3/19/2015 1:34:00PM

Analyte	Result	Reporting Limit	Units	Dilution	Batch	Prepared	Analyzed	Notes
---------	--------	--------------------	-------	----------	-------	----------	----------	-------

Origins Laboratory, Inc.

X503248-09 (Water)

BTEX by EPA 8260C

Benzene	ND	1.0	ug/L	1	5C20011	03/20/2015	03/21/2015
Toluene	ND	1.0	"	"	"	"	"
Ethylbenzene	ND	1.0	"	"	"	"	"
Xylenes, total	ND	1.0	"	"	"	"	"

Surrogate: 1,2-Dichloroethane-d4	87.7 %	87.3-113			"	"	"
Surrogate: Toluene-d8	99.6 %	90.9-108			"	"	"
Surrogate: 4-Bromofluorobenzene	102 %	88.6-111			"	"	"

Origins Laboratory, Inc.



The results in this report apply to the samples analyzed in accordance with the chain of custody document. This analytical report must be reproduced in its entirety.

Eagle Environmental Consulting, Inc.

4101 Inca Street

Denver CO 80211

Martin C Eckert III

Project Number: [none]

Project: Noble - State M36-3, M36-5, 6-36,7-36
and 8-36

MW-10

3/19/2015 12:50:00PM

Analyte	Result	Reporting Limit	Units	Dilution	Batch	Prepared	Analyzed	Notes
---------	--------	--------------------	-------	----------	-------	----------	----------	-------

Origins Laboratory, Inc.

X503248-10 (Water)

BTEX by EPA 8260C

Benzene	ND	1.0	ug/L	1	5C20011	03/20/2015	03/21/2015
Toluene	ND	1.0	"	"	"	"	"
Ethylbenzene	ND	1.0	"	"	"	"	"
Xylenes, total	ND	1.0	"	"	"	"	"

Surrogate: 1,2-Dichloroethane-d4	92.6 %	87.3-113			"	"	"
Surrogate: Toluene-d8	100 %	90.9-108			"	"	"
Surrogate: 4-Bromofluorobenzene	102 %	88.6-111			"	"	"

Origins Laboratory, Inc.



The results in this report apply to the samples analyzed in accordance with the chain of custody document. This analytical report must be reproduced in its entirety.

Eagle Environmental Consulting, Inc.

4101 Inca Street

Denver CO 80211

Martin C Eckert III

Project Number: [none]

Project: Noble - State M36-3, M36-5, 6-36,7-36
and 8-36

MW-11

3/19/2015 12:38:00PM

Analyte	Result	Reporting Limit	Units	Dilution	Batch	Prepared	Analyzed	Notes
---------	--------	--------------------	-------	----------	-------	----------	----------	-------

Origins Laboratory, Inc.

X503248-11 (Water)

BTEX by EPA 8260C

Benzene	ND	1.0	ug/L	1	5C20011	03/20/2015	03/21/2015
Toluene	ND	1.0	"	"	"	"	"
Ethylbenzene	ND	1.0	"	"	"	"	"
Xylenes, total	ND	1.0	"	"	"	"	"

Surrogate: 1,2-Dichloroethane-d4	91.6 %	87.3-113			"	"	"
Surrogate: Toluene-d8	98.6 %	90.9-108			"	"	"
Surrogate: 4-Bromofluorobenzene	99.3 %	88.6-111			"	"	"

Origins Laboratory, Inc.



The results in this report apply to the samples analyzed in accordance with the chain of custody document. This analytical report must be reproduced in its entirety.

Eagle Environmental Consulting, Inc.

4101 Inca Street

Denver CO 80211

Martin C Eckert III

Project Number: [none]

Project: Noble - State M36-3, M36-5, 6-36,7-36
and 8-36

MW-12

3/19/2015 12:24:00PM

Analyte	Result	Reporting Limit	Units	Dilution	Batch	Prepared	Analyzed	Notes
---------	--------	--------------------	-------	----------	-------	----------	----------	-------

Origins Laboratory, Inc.

X503248-12 (Water)

BTEX by EPA 8260C

Benzene	ND	1.0	ug/L	1	5C20011	03/20/2015	03/21/2015
Toluene	ND	1.0	"	"	"	"	"
Ethylbenzene	ND	1.0	"	"	"	"	"
Xylenes, total	ND	1.0	"	"	"	"	"

Surrogate: 1,2-Dichloroethane-d4	89.3 %	87.3-113			"	"	"
Surrogate: Toluene-d8	101 %	90.9-108			"	"	"
Surrogate: 4-Bromofluorobenzene	99.3 %	88.6-111			"	"	"

Origins Laboratory, Inc.



The results in this report apply to the samples analyzed in accordance with the chain of custody document. This analytical report must be reproduced in its entirety.

Eagle Environmental Consulting, Inc.

4101 Inca Street

Denver CO 80211

Martin C Eckert III

Project Number: [none]

Project: Noble - State M36-3, M36-5, 6-36,7-36
and 8-36

MW-13

3/19/2015 12:02:00PM

Analyte	Result	Reporting Limit	Units	Dilution	Batch	Prepared	Analyzed	Notes
---------	--------	--------------------	-------	----------	-------	----------	----------	-------

Origins Laboratory, Inc.

X503248-13 (Water)

BTEX by EPA 8260C

Benzene	ND	1.0	ug/L	1	5C20011	03/20/2015	03/21/2015
Toluene	ND	1.0	"	"	"	"	"
Ethylbenzene	ND	1.0	"	"	"	"	"
Xylenes, total	ND	1.0	"	"	"	"	"

Surrogate: 1,2-Dichloroethane-d4	100 %	87.3-113			"	"	"
Surrogate: Toluene-d8	101 %	90.9-108			"	"	"
Surrogate: 4-Bromofluorobenzene	94.0 %	88.6-111			"	"	"

Origins Laboratory, Inc.



The results in this report apply to the samples analyzed in accordance with the chain of custody document. This analytical report must be reproduced in its entirety.

Eagle Environmental Consulting, Inc.

4101 Inca Street

Denver CO 80211

Martin C Eckert III

Project Number: [none]

Project: Noble - State M36-3, M36-5, 6-36,7-36
and 8-36

MW-14

3/19/2015 12:13:00PM

Analyte	Result	Reporting Limit	Units	Dilution	Batch	Prepared	Analyzed	Notes
---------	--------	--------------------	-------	----------	-------	----------	----------	-------

Origins Laboratory, Inc.

X503248-14 (Water)

BTEX by EPA 8260C

Benzene	ND	1.0	ug/L	1	5C20011	03/20/2015	03/21/2015
Toluene	ND	1.0	"	"	"	"	"
Ethylbenzene	ND	1.0	"	"	"	"	"
Xylenes, total	ND	1.0	"	"	"	"	"

Surrogate: 1,2-Dichloroethane-d4

101 % 87.3-113

" " "

Surrogate: Toluene-d8

99.2 % 90.9-108

" " "

Surrogate: 4-Bromofluorobenzene

95.3 % 88.6-111

" " "

Origins Laboratory, Inc.



The results in this report apply to the samples analyzed in accordance with the chain of custody document. This analytical report must be reproduced in its entirety.

Eagle Environmental Consulting, Inc.

4101 Inca Street

Denver CO 80211

Martin C Eckert III

Project Number: [none]

Project: Noble - State M36-3, M36-5, 6-36,7-36
and 8-36

MW-15

3/19/2015 4:30:00PM

Analyte	Result	Reporting		Units	Dilution	Batch	Prepared	Analyzed	Notes
		Limit							

Origins Laboratory, Inc.

X503248-15 (Water)

BTEX by EPA 8260C

Benzene	ND	1.0	ug/L	1	5C20011	03/20/2015	03/21/2015
Toluene	ND	1.0	"	"	"	"	"
Ethylbenzene	ND	1.0	"	"	"	"	"
Xylenes, total	ND	1.0	"	"	"	"	"

Surrogate: 1,2-Dichloroethane-d4	100 %	87.3-113			"	"	"
Surrogate: Toluene-d8	100 %	90.9-108			"	"	"
Surrogate: 4-Bromofluorobenzene	95.9 %	88.6-111			"	"	"

Origins Laboratory, Inc.



The results in this report apply to the samples analyzed in accordance with the chain of custody document. This analytical report must be reproduced in its entirety.

Eagle Environmental Consulting, Inc.

4101 Inca Street

Denver CO 80211

Martin C Eckert III

Project Number: [none]

Project: Noble - State M36-3, M36-5, 6-36,7-36
and 8-36

MW-16

3/19/2015 4:09:00PM

Analyte	Result	Reporting Limit	Units	Dilution	Batch	Prepared	Analyzed	Notes
---------	--------	--------------------	-------	----------	-------	----------	----------	-------

Origins Laboratory, Inc.

X503248-16 (Water)

BTEX by EPA 8260C

Benzene	ND	1.0	ug/L	1	5C20011	03/20/2015	03/21/2015
Toluene	ND	1.0	"	"	"	"	"
Ethylbenzene	ND	1.0	"	"	"	"	"
Xylenes, total	ND	1.0	"	"	"	"	"

Surrogate: 1,2-Dichloroethane-d4	99.2 %	87.3-113			"	"	"
Surrogate: Toluene-d8	101 %	90.9-108			"	"	"
Surrogate: 4-Bromofluorobenzene	95.0 %	88.6-111			"	"	"

Origins Laboratory, Inc.



The results in this report apply to the samples analyzed in accordance with the chain of custody document. This analytical report must be reproduced in its entirety.

Eagle Environmental Consulting, Inc.

4101 Inca Street

Denver CO 80211

Martin C Eckert III

Project Number: [none]

Project: Noble - State M36-3, M36-5, 6-36,7-36
and 8-36

MW-17

3/19/2015 4:19:00PM

Analyte	Result	Reporting		Units	Dilution	Batch	Prepared	Analyzed	Notes
		Limit							

Origins Laboratory, Inc.

X503248-17 (Water)

BTEX by EPA 8260C

Benzene	ND	1.0	ug/L	1	5C20011	03/20/2015	03/21/2015
Toluene	ND	1.0	"	"	"	"	"
Ethylbenzene	ND	1.0	"	"	"	"	"
Xylenes, total	ND	1.0	"	"	"	"	"

Surrogate: 1,2-Dichloroethane-d4	99.8 %	87.3-113	"	"	"
Surrogate: Toluene-d8	102 %	90.9-108	"	"	"
Surrogate: 4-Bromofluorobenzene	96.4 %	88.6-111	"	"	"

Origins Laboratory, Inc.



The results in this report apply to the samples analyzed in accordance with the chain of custody document. This analytical report must be reproduced in its entirety.

Eagle Environmental Consulting, Inc.

4101 Inca Street

Denver CO 80211

Martin C Eckert III

Project Number: [none]

Project: Noble - State M36-3, M36-5, 6-36,7-36
and 8-36

MW-18

3/19/2015 2:27:00PM

Analyte	Result	Reporting Limit	Units	Dilution	Batch	Prepared	Analyzed	Notes
---------	--------	--------------------	-------	----------	-------	----------	----------	-------

Origins Laboratory, Inc.

X503248-18 (Water)

BTEX by EPA 8260C

Benzene	ND	1.0	ug/L	1	5C20011	03/20/2015	03/21/2015
Toluene	ND	1.0	"	"	"	"	"
Ethylbenzene	ND	1.0	"	"	"	"	"
Xylenes, total	ND	1.0	"	"	"	"	"

Surrogate: 1,2-Dichloroethane-d4	100 %	87.3-113			"	"	"
Surrogate: Toluene-d8	101 %	90.9-108			"	"	"
Surrogate: 4-Bromofluorobenzene	95.8 %	88.6-111			"	"	"

Origins Laboratory, Inc.



The results in this report apply to the samples analyzed in accordance with the chain of custody document. This analytical report must be reproduced in its entirety.

Eagle Environmental Consulting, Inc.

4101 Inca Street

Denver CO 80211

Martin C Eckert III

Project Number: [none]

Project: Noble - State M36-3, M36-5, 6-36,7-36
and 8-36

Volatile Organic Compounds by GC/MS SW846 8260C - Quality Control
Origins Laboratory, Inc.

Analyte	Result	Reporting Limit	Units	Spike Level	Source Result	%REC	%REC Limits	RPD	RPD Limit	Notes
---------	--------	--------------------	-------	----------------	------------------	------	----------------	-----	--------------	-------

Batch 5C20011 - EPA 5030B (Water)

Blank (5C20011-BLK1)

Prepared: 03/20/2015 Analyzed: 03/20/2015

Benzene	ND	1.0	ug/L							
Toluene	ND	1.0	"							
Ethylbenzene	ND	1.0	"							
Xylenes, total	ND	1.0	"							
Surrogate: 1,2-Dichloroethane-d4	56		"	62.5	89.5	87.3-113				
Surrogate: Toluene-d8	62		"	62.5	98.5	90.9-108				
Surrogate: 4-Bromofluorobenzene	63		"	62.5	101	88.6-111				

Origins Laboratory, Inc.



The results in this report apply to the samples analyzed in
accordance with the chain of custody document. This
analytical report must be reproduced in its entirety.

Eagle Environmental Consulting, Inc.

4101 Inca Street

Denver CO 80211

Martin C Eckert III

Project Number: [none]

Project: Noble - State M36-3, M36-5, 6-36,7-36
and 8-36

Volatile Organic Compounds by GC/MS SW846 8260C - Quality Control
Origins Laboratory, Inc.

Analyte	Result	Reporting Limit	Units	Spike Level	Source Result	%REC	%REC Limits	RPD	RPD Limit	Notes
---------	--------	--------------------	-------	----------------	------------------	------	----------------	-----	--------------	-------

Batch 5C20011 - EPA 5030B (Water)

Blank (5C20011-BLK2)

Prepared: 03/20/2015 Analyzed: 03/20/2015

Benzene	ND	1.0	ug/L							
Toluene	ND	1.0	"							
Ethylbenzene	ND	1.0	"							
Xylenes, total	ND	1.0	"							
Surrogate: 1,2-Dichloroethane-d4	58		"	62.5	92.2	87.3-113				
Surrogate: Toluene-d8	63		"	62.5	100	90.9-108				
Surrogate: 4-Bromofluorobenzene	63		"	62.5	100	88.6-111				

Origins Laboratory, Inc.



The results in this report apply to the samples analyzed in
accordance with the chain of custody document. This
analytical report must be reproduced in its entirety.

Eagle Environmental Consulting, Inc.

4101 Inca Street

Denver CO 80211

Martin C Eckert III

Project Number: [none]

Project: Noble - State M36-3, M36-5, 6-36,7-36
and 8-36

Volatile Organic Compounds by GC/MS SW846 8260C - Quality Control
Origins Laboratory, Inc.

Analyte	Result	Reporting Limit	Units	Spike Level	Source Result	%REC	%REC Limits	RPD	RPD Limit	Notes
---------	--------	-----------------	-------	-------------	---------------	------	-------------	-----	-----------	-------

Batch 5C20011 - EPA 5030B (Water)

LCS (5C20011-BS1)

Prepared: 03/20/2015 Analyzed: 03/20/2015

Benzene	41.2	1.0	ug/L	50.0		82.3	75-126			
Toluene	43.4	1.0	"	50.0		86.8	78.7-126			
Ethylbenzene	44.1	1.0	"	50.0		88.1	80-130			
m,p-Xylene	91.0	2.0	"	100		91.0	77.2-133			
o-Xylene	43.9	1.0	"	50.0		87.7	77.9-126			
Surrogate: 1,2-Dichloroethane-d4	54		"	62.5		86.6	87.3-113			
Surrogate: Toluene-d8	63		"	62.5		100	90.9-108			
Surrogate: 4-Bromofluorobenzene	64		"	62.5		103	88.6-111			

Origins Laboratory, Inc.



The results in this report apply to the samples analyzed in accordance with the chain of custody document. This analytical report must be reproduced in its entirety.

Jen Pellegrini For Noelle Doyle Mathis, President

Eagle Environmental Consulting, Inc.

4101 Inca Street

Denver CO 80211

Martin C Eckert III

Project Number: [none]

Project: Noble - State M36-3, M36-5, 6-36,7-36
and 8-36

Volatile Organic Compounds by GC/MS SW846 8260C - Quality Control
Origins Laboratory, Inc.

Analyte	Result	Reporting Limit	Units	Spike Level	Source Result	%REC	%REC Limits	RPD	RPD Limit	Notes
---------	--------	-----------------	-------	-------------	---------------	------	-------------	-----	-----------	-------

Batch 5C20011 - EPA 5030B (Water)

LCS (5C20011-BS2)

Prepared: 03/20/2015 Analyzed: 03/20/2015

Benzene	40.1	1.0	ug/L	50.0		80.2	75-126			
Toluene	41.3	1.0	"	50.0		82.6	78.7-126			
Ethylbenzene	40.3	1.0	"	50.0		80.5	80-130			
m,p-Xylene	82.4	2.0	"	100		82.4	77.2-133			
o-Xylene	40.1	1.0	"	50.0		80.2	77.9-126			
Surrogate: 1,2-Dichloroethane-d4	55		"	62.5		88.6	87.3-113			
Surrogate: Toluene-d8	64		"	62.5		103	90.9-108			
Surrogate: 4-Bromofluorobenzene	62		"	62.5		98.6	88.6-111			

Origins Laboratory, Inc.



The results in this report apply to the samples analyzed in accordance with the chain of custody document. This analytical report must be reproduced in its entirety.

Jen Pellegrini For Noelle Doyle Mathis, President

Eagle Environmental Consulting, Inc.

4101 Inca Street

Denver CO 80211

Martin C Eckert III

Project Number: [none]

Project: Noble - State M36-3, M36-5, 6-36,7-36
and 8-36

Volatile Organic Compounds by GC/MS SW846 8260C - Quality Control
Origins Laboratory, Inc.

Analyte	Result	Reporting Limit	Units	Spike Level	Source Result	%REC	%REC Limits	RPD	RPD Limit	Notes
---------	--------	-----------------	-------	-------------	---------------	------	-------------	-----	-----------	-------

Batch 5C20011 - EPA 5030B (Water)

Matrix Spike (5C20011-MS1)		Source: X503241-01			Prepared: 03/20/2015 Analyzed: 03/20/2015					
Benzene	41.6	1.0	ug/L	50.0	ND	83.2	74-130			
Toluene	42.8	1.0	"	50.0	ND	85.6	73-131			
Ethylbenzene	44.6	1.0	"	50.0	ND	89.2	76-132			
m,p-Xylene	88.9	2.0	"	100	ND	88.9	69-139			
o-Xylene	42.4	1.0	"	50.0	ND	84.8	74-131			
Surrogate: 1,2-Dichloroethane-d4	56		"	62.5		88.9	87.3-113			
Surrogate: Toluene-d8	64		"	62.5		102	90.9-108			
Surrogate: 4-Bromofluorobenzene	64		"	62.5		102	88.6-111			

Origins Laboratory, Inc.



The results in this report apply to the samples analyzed in accordance with the chain of custody document. This analytical report must be reproduced in its entirety.

Eagle Environmental Consulting, Inc.

4101 Inca Street

Denver CO 80211

Martin C Eckert III

Project Number: [none]

Project: Noble - State M36-3, M36-5, 6-36,7-36
and 8-36

Volatile Organic Compounds by GC/MS SW846 8260C - Quality Control
Origins Laboratory, Inc.

Analyte	Result	Reporting Limit	Units	Spike Level	Source Result	%REC	%REC Limits	RPD	RPD Limit	Notes
---------	--------	-----------------	-------	-------------	---------------	------	-------------	-----	-----------	-------

Batch 5C20011 - EPA 5030B (Water)

Matrix Spike (5C20011-MS2)		Source: X503241-02			Prepared: 03/20/2015 Analyzed: 03/20/2015					
Benzene	38.6	1.0	ug/L	50.0	ND	77.3	74-130			
Toluene	39.3	1.0	"	50.0	ND	78.6	73-131			
Ethylbenzene	40.8	1.0	"	50.0	ND	81.5	76-132			
m,p-Xylene	81.7	2.0	"	100	ND	81.7	69-139			
o-Xylene	39.5	1.0	"	50.0	ND	79.1	74-131			
Surrogate: 1,2-Dichloroethane-d4	55		"	62.5		87.3	87.3-113			
Surrogate: Toluene-d8	62		"	62.5		99.0	90.9-108			
Surrogate: 4-Bromofluorobenzene	63		"	62.5		101	88.6-111			

Origins Laboratory, Inc.



The results in this report apply to the samples analyzed in accordance with the chain of custody document. This analytical report must be reproduced in its entirety.

Jen Pellegrini For Noelle Doyle Mathis, President

Eagle Environmental Consulting, Inc.

4101 Inca Street

Denver CO 80211

Martin C Eckert III

Project Number: [none]

Project: Noble - State M36-3, M36-5, 6-36,7-36
and 8-36

Volatile Organic Compounds by GC/MS SW846 8260C - Quality Control
Origins Laboratory, Inc.

Analyte	Result	Reporting Limit	Units	Spike Level	Source Result	%REC	%REC Limits	RPD	RPD Limit	Notes
---------	--------	-----------------	-------	-------------	---------------	------	-------------	-----	-----------	-------

Batch 5C20011 - EPA 5030B (Water)

Matrix Spike Dup (5C20011-MSD1)		Source: X503241-01			Prepared: 03/20/2015 Analyzed: 03/20/2015					
Benzene	39.2	1.0	ug/L	50.0	ND	78.3	74-130	6.09	20	
Toluene	39.9	1.0	"	50.0	ND	79.8	73-131	6.99	20	
Ethylbenzene	40.9	1.0	"	50.0	ND	81.9	76-132	8.51	20	
m,p-Xylene	82.6	2.0	"	100	ND	82.6	69-139	7.28	20	
o-Xylene	40.1	1.0	"	50.0	ND	80.2	74-131	5.60	20	
Surrogate: 1,2-Dichloroethane-d4	55		"	62.5		87.2	87.3-113			
Surrogate: Toluene-d8	62		"	62.5		99.7	90.9-108			
Surrogate: 4-Bromofluorobenzene	61		"	62.5		97.5	88.6-111			

Origins Laboratory, Inc.



The results in this report apply to the samples analyzed in accordance with the chain of custody document. This analytical report must be reproduced in its entirety.

Jen Pellegrini For Noelle Doyle Mathis, President

Eagle Environmental Consulting, Inc.

4101 Inca Street

Denver CO 80211

Martin C Eckert III

Project Number: [none]

Project: Noble - State M36-3, M36-5, 6-36,7-36
and 8-36

Volatile Organic Compounds by GC/MS SW846 8260C - Quality Control
Origins Laboratory, Inc.

Analyte	Result	Reporting Limit	Units	Spike Level	Source Result	%REC	%REC Limits	RPD	RPD Limit	Notes
---------	--------	-----------------	-------	-------------	---------------	------	-------------	-----	-----------	-------

Batch 5C20011 - EPA 5030B (Water)

Matrix Spike Dup (5C20011-MSD2)		Source: X503241-02			Prepared: 03/20/2015 Analyzed: 03/20/2015					
Benzene	39.6	1.0	ug/L	50.0	ND	79.3	74-130	2.53	20	
Toluene	41.0	1.0	"	50.0	ND	82.1	73-131	4.28	20	
Ethylbenzene	40.8	1.0	"	50.0	ND	81.6	76-132	0.172	20	
m,p-Xylene	83.2	2.0	"	100	ND	83.2	69-139	1.88	20	
o-Xylene	40.3	1.0	"	50.0	ND	80.6	74-131	1.85	20	
Surrogate: 1,2-Dichloroethane-d4	53		"	62.5		85.5	87.3-113			
Surrogate: Toluene-d8	63		"	62.5		101	90.9-108			
Surrogate: 4-Bromofluorobenzene	63		"	62.5		101	88.6-111			

Origins Laboratory, Inc.



The results in this report apply to the samples analyzed in accordance with the chain of custody document. This analytical report must be reproduced in its entirety.

Eagle Environmental Consulting, Inc.

4101 Inca Street

Denver CO 80211

Martin C Eckert III

Project Number: [none]

Project: Noble - State M36-3, M36-5, 6-36,7-36
and 8-36

Notes and Definitions

ND Analyte NOT DETECTED at or above the reporting limit

RPD Relative Percent Difference

All soil results are reported at a wet weight basis.

Origins Laboratory, Inc.



*The results in this report apply to the samples analyzed in
accordance with the chain of custody document. This
analytical report must be reproduced in its entirety.*



April 06, 2015

Eagle Environmental Consulting, Inc.

Martin C Eckert III

4101 Inca Street

Denver

CO 80211

**Project Name - Noble - State M36-3, M36-5,
6-36,7-36 and 8-36**

Project Number - [none]

Attached are your analytical results for Noble - State M36-3, M36-5, 6-36,7-36 and 8-36 received by Origins Laboratory, Inc. April 01, 2015. This project is associated with Origins project number X504015-01.

The analytical results in the following report were analyzed under the guidelines of EPA Methods. These methods are identified as follows; "SW" are defined in SW-846, "EPA" are defined in 40CFR part 136 and "SM" are defined in the most current revision of Standard Methods For the Examination of Water and Wastewater.

The analytical results apply specifically to the samples and analyses specified per the attached Chain of Custody. As such, this report shall not be reproduced except in full, without the written approval of Origin's laboratory.

Unless otherwise noted, the analytical results for all soil samples are reported on a wet weight basis. All analytical analyses were performed under NELAP guidelines unless noted by a data qualifier.

Any holding time exceedances, deviations from the method specifications or deviations from Origins Laboratory's Standard Operating Procedures are outlined in the case narrative.

Thank you for selecting Origins for your analytical needs. Please contact us with any questions concerning this report, or if we can help with anything at all.

Origins Laboratory, Inc.
303.433.1322
o-squad@oelabinc.com



1725 Elk Place, Denver, CO 80211 | Phone: 303.433.1322 | Fax: 303.265.9645

Eagle Environmental Consulting, Inc.

4101 Inca Street

Denver CO 80211

Martin C Eckert III

Project Number: [none]

Project: Noble - State M36-3, M36-5, 6-36,7-36
and 8-36

CROSS REFERENCE REPORT

Sample ID	Laboratory ID	Matrix	Date Sampled	Date Received
MW-03	X504015-01	Water	April 1, 2015 13:46	04/01/2015 14:20

Origins Laboratory, Inc.



*The results in this report apply to the samples analyzed in
accordance with the chain of custody document. This
analytical report must be reproduced in its entirety.*

Eagle Environmental Consulting, Inc.

4101 Inca Street

Denver CO 80211

Martin C Eckert III

Project Number: [none]

Project: Noble - State M36-3, M36-5, 6-36, 7-36 and 8-36

Origins Laboratory

F-012207-01-R1
Effective Date: 01/09/12

Sample Receipt Checklist

Origins Work Order: X504015

Client: Eagle

Client Project ID: State-M36-3

Checklist Completed by: K. Rubin

Shipped Via: HD
(UPS, FedEx, Hand Delivered, Pick-up, etc.)

Date/time completed: 4.1.15 1420

Airbill #: N/A

Matrix(s) Received: (Check all that apply): Soil/Solid ☒ Water ☐ Other: ☐

Cooler Number/Temperature: S.4 / 5 °C / 41 °F (Describe)

Thermometer ID: T003

Requirement Description	Yes	No	N/A	Comments (if any)
If samples require cooling, was the temperature between 0°C to ≤ 6°C ⁽¹⁾ ?	<input checked="" type="checkbox"/>	<input type="checkbox"/>	<input type="checkbox"/>	
Is there ice present (document if blue ice is used)	<input checked="" type="checkbox"/>	<input type="checkbox"/>	<input type="checkbox"/>	
Are custody seals present on cooler? (if so, document in comments if they are signed and dated, broken or intact)	<input type="checkbox"/>	<input checked="" type="checkbox"/>	<input type="checkbox"/>	
Are custody seals present on each sample container? (if so, document in comments if they are signed and dated, broken or intact)	<input type="checkbox"/>	<input checked="" type="checkbox"/>	<input type="checkbox"/>	
Were all samples received intact ⁽¹⁾ ?	<input checked="" type="checkbox"/>	<input type="checkbox"/>	<input type="checkbox"/>	
Was adequate sample volume provided ⁽¹⁾ ?	<input checked="" type="checkbox"/>	<input type="checkbox"/>	<input type="checkbox"/>	
Are short holding time analytes or samples with HTs due within 48 hours present ⁽¹⁾ ?	<input type="checkbox"/>	<input checked="" type="checkbox"/>	<input type="checkbox"/>	
Is a chain-of-custody (COC) present and filled out completely ⁽¹⁾ ?	<input checked="" type="checkbox"/>	<input type="checkbox"/>	<input type="checkbox"/>	
Does the COC agree with the number and type of sample bottles received ⁽¹⁾ ?	<input checked="" type="checkbox"/>	<input type="checkbox"/>	<input type="checkbox"/>	
Do the sample IDs on the bottle labels match the COC ⁽¹⁾ ?	<input checked="" type="checkbox"/>	<input type="checkbox"/>	<input type="checkbox"/>	
Is the COC properly relinquished by the client with date and time recorded ⁽¹⁾ ?	<input checked="" type="checkbox"/>	<input type="checkbox"/>	<input type="checkbox"/>	
For volatiles in water – is there headspace (> ¼ inch bubble) present? If yes, contact client and note in narrative.	<input type="checkbox"/>	<input checked="" type="checkbox"/>	<input type="checkbox"/>	
Are samples preserved that require preservation and was it checked ⁽¹⁾ ? (note ID of confirmation instrument used in comments) / (preservation is not confirmed for subcontracted analyses in order to insure sample integrity)/(pH <2 for samples preserved with HNO ₃ , HCL, H ₂ SO ₄) / (pH >10 for samples preserved with NaAsO ₂ +NaOH, ZnAc+NaOH)	<input checked="" type="checkbox"/>	<input type="checkbox"/>	<input type="checkbox"/>	hcc
Additional Comments (if any):				

⁽¹⁾ If NO, then contact the client before proceeding with analysis and note date/time and person contacted as well as the corrective action to be taken in the additional comments (above) and the case narrative.

[Signature]
Reviewed by (Project Manager)

4/2/15
Date/Time Reviewed

Origins Laboratory, Inc.

[Signature]

The results in this report apply to the samples analyzed in accordance with the chain of custody document. This analytical report must be reproduced in its entirety.

Eagle Environmental Consulting, Inc.

4101 Inca Street

Denver CO 80211

Martin C Eckert III

Project Number: [none]

Project: Noble - State M36-3, M36-5, 6-36,7-36
and 8-36

MW-03

4/1/2015 1:46:00PM

Analyte	Result	Reporting		Units	Dilution	Batch	Prepared	Analyzed	Notes
		Limit							

Origins Laboratory, Inc.

X504015-01 (Water)

BTEX by EPA 8260C

Benzene	12.9	1.0	ug/L	1	5D03005	04/03/2015	04/03/2015
Toluene	ND	1.0	"	"	"	"	"
Ethylbenzene	ND	1.0	"	"	"	"	"
Xylenes, total	ND	1.0	"	"	"	"	"

Surrogate: 1,2-Dichloroethane-d4	102 %	87.3-113			"	"	"
Surrogate: Toluene-d8	102 %	90.9-108			"	"	"
Surrogate: 4-Bromofluorobenzene	93.3 %	88.6-111			"	"	"

Origins Laboratory, Inc.



The results in this report apply to the samples analyzed in accordance with the chain of custody document. This analytical report must be reproduced in its entirety.

Eagle Environmental Consulting, Inc.

4101 Inca Street

Denver CO 80211

Martin C Eckert III

Project Number: [none]

Project: Noble - State M36-3, M36-5, 6-36,7-36
and 8-36

Volatile Organic Compounds by GC/MS SW846 8260C - Quality Control
Origins Laboratory, Inc.

Analyte	Result	Reporting Limit	Units	Spike Level	Source Result	%REC	%REC Limits	RPD	RPD Limit	Notes
---------	--------	--------------------	-------	----------------	------------------	------	----------------	-----	--------------	-------

Batch 5D03005 - EPA 5030B (Water)

Blank (5D03005-BLK1)

Prepared: 04/03/2015 Analyzed: 04/03/2015

Benzene	ND	1.0	ug/L							
Toluene	ND	1.0	"							
Ethylbenzene	ND	1.0	"							
Xylenes, total	ND	1.0	"							
Surrogate: 1,2-Dichloroethane-d4	63		"	62.5	101		87.3-113			
Surrogate: Toluene-d8	63		"	62.5	100		90.9-108			
Surrogate: 4-Bromofluorobenzene	59		"	62.5	94.0		88.6-111			

Origins Laboratory, Inc.



*The results in this report apply to the samples analyzed in
accordance with the chain of custody document. This
analytical report must be reproduced in its entirety.*

Eagle Environmental Consulting, Inc.

4101 Inca Street

Denver CO 80211

Martin C Eckert III

Project Number: [none]

Project: Noble - State M36-3, M36-5, 6-36,7-36
and 8-36

Volatile Organic Compounds by GC/MS SW846 8260C - Quality Control
Origins Laboratory, Inc.

Analyte	Result	Reporting Limit	Units	Spike Level	Source Result	%REC	%REC Limits	RPD	RPD Limit	Notes
---------	--------	--------------------	-------	----------------	------------------	------	----------------	-----	--------------	-------

Batch 5D03005 - EPA 5030B (Water)

LCS (5D03005-BS1)

Prepared: 04/03/2015 Analyzed: 04/03/2015

Benzene	48.9	1.0	ug/L	50.0		97.7	75-126			
Toluene	51.4	1.0	"	50.0		103	78.7-126			
Ethylbenzene	54.0	1.0	"	50.0		108	80-130			
m,p-Xylene	105	2.0	"	100		105	77.2-133			
o-Xylene	50.4	1.0	"	50.0		101	77.9-126			
Surrogate: 1,2-Dichloroethane-d4	58		"	62.5		92.8	87.3-113			
Surrogate: Toluene-d8	64		"	62.5		102	90.9-108			
Surrogate: 4-Bromofluorobenzene	59		"	62.5		94.2	88.6-111			

Origins Laboratory, Inc.



*The results in this report apply to the samples analyzed in
accordance with the chain of custody document. This
analytical report must be reproduced in its entirety.*

Eagle Environmental Consulting, Inc.

4101 Inca Street

Denver CO 80211

Martin C Eckert III

Project Number: [none]

Project: Noble - State M36-3, M36-5, 6-36,7-36
and 8-36

Volatile Organic Compounds by GC/MS SW846 8260C - Quality Control
Origins Laboratory, Inc.

Analyte	Result	Reporting Limit	Units	Spike Level	Source Result	%REC	%REC Limits	RPD	RPD Limit	Notes
---------	--------	-----------------	-------	-------------	---------------	------	-------------	-----	-----------	-------

Batch 5D03005 - EPA 5030B (Water)

Matrix Spike (5D03005-MS1)		Source: X504015-01			Prepared: 04/03/2015 Analyzed: 04/03/2015					
Benzene	52.1	1.0	ug/L	50.0	12.9	78.3	74-130			
Toluene	42.6	1.0	"	50.0	ND	85.2	73-131			
Ethylbenzene	43.7	1.0	"	50.0	ND	87.3	76-132			
m,p-Xylene	86.8	2.0	"	100	ND	86.8	69-139			
o-Xylene	44.9	1.0	"	50.0	ND	89.8	74-131			
Surrogate: 1,2-Dichloroethane-d4	59		"	62.5		95.0	87.3-113			
Surrogate: Toluene-d8	64		"	62.5		102	90.9-108			
Surrogate: 4-Bromofluorobenzene	59		"	62.5		94.1	88.6-111			

Origins Laboratory, Inc.



The results in this report apply to the samples analyzed in accordance with the chain of custody document. This analytical report must be reproduced in its entirety.

Eagle Environmental Consulting, Inc.

4101 Inca Street

Denver CO 80211

Martin C Eckert III

Project Number: [none]

Project: Noble - State M36-3, M36-5, 6-36,7-36 and 8-36

Volatile Organic Compounds by GC/MS SW846 8260C - Quality Control
Origins Laboratory, Inc.

Analyte	Result	Reporting Limit	Units	Spike Level	Source Result	%REC	%REC Limits	RPD	RPD Limit	Notes
---------	--------	-----------------	-------	-------------	---------------	------	-------------	-----	-----------	-------

Batch 5D03005 - EPA 5030B (Water)

Matrix Spike Dup (5D03005-MSD1)		Source: X504015-01			Prepared: 04/03/2015 Analyzed: 04/03/2015					
Benzene	61.5	1.0	ug/L	50.0	12.9	97.1	74-130	16.5	20	
Toluene	53.6	1.0	"	50.0	ND	107	73-131	22.9	20	QR-02
Ethylbenzene	56.8	1.0	"	50.0	ND	114	76-132	26.2	20	QR-02
m,p-Xylene	112	2.0	"	100	ND	112	69-139	25.2	20	QR-02
o-Xylene	54.8	1.0	"	50.0	ND	110	74-131	19.9	20	
Surrogate: 1,2-Dichloroethane-d4	58		"	62.5		92.5	87.3-113			
Surrogate: Toluene-d8	63		"	62.5		101	90.9-108			
Surrogate: 4-Bromofluorobenzene	59		"	62.5		94.2	88.6-111			

Origins Laboratory, Inc.



The results in this report apply to the samples analyzed in accordance with the chain of custody document. This analytical report must be reproduced in its entirety.

Eagle Environmental Consulting, Inc.

4101 Inca Street

Denver CO 80211

Martin C Eckert III

Project Number: [none]

Project: Noble - State M36-3, M36-5, 6-36,7-36
and 8-36

Notes and Definitions

QR-02 The RPD result exceeded the QC control limits; however, both percent recoveries were acceptable. Sample results for the QC batch were accepted based on percent recoveries and completeness of QC data.

ND Analyte NOT DETECTED at or above the reporting limit

RPD Relative Percent Difference

All soil results are reported at a wet weight basis.

Origins Laboratory, Inc.



The results in this report apply to the samples analyzed in accordance with the chain of custody document. This analytical report must be reproduced in its entirety.

Jen Pellegrini For Noelle Doyle Mathis, President