

# **LEGEND:**

 **PROPOSED LOCATION**

**ConocoPhillips Company**

**MONTEZUMA #4-64 18-13 4H  
SECTION 18, T4S, R64W, 6th P.M.  
300' FSL 1075' FEL**



**UELS, LLC**  
Corporate Office \* 85 South 200 East  
Vernal, UT 84078 \* (435) 789-1017

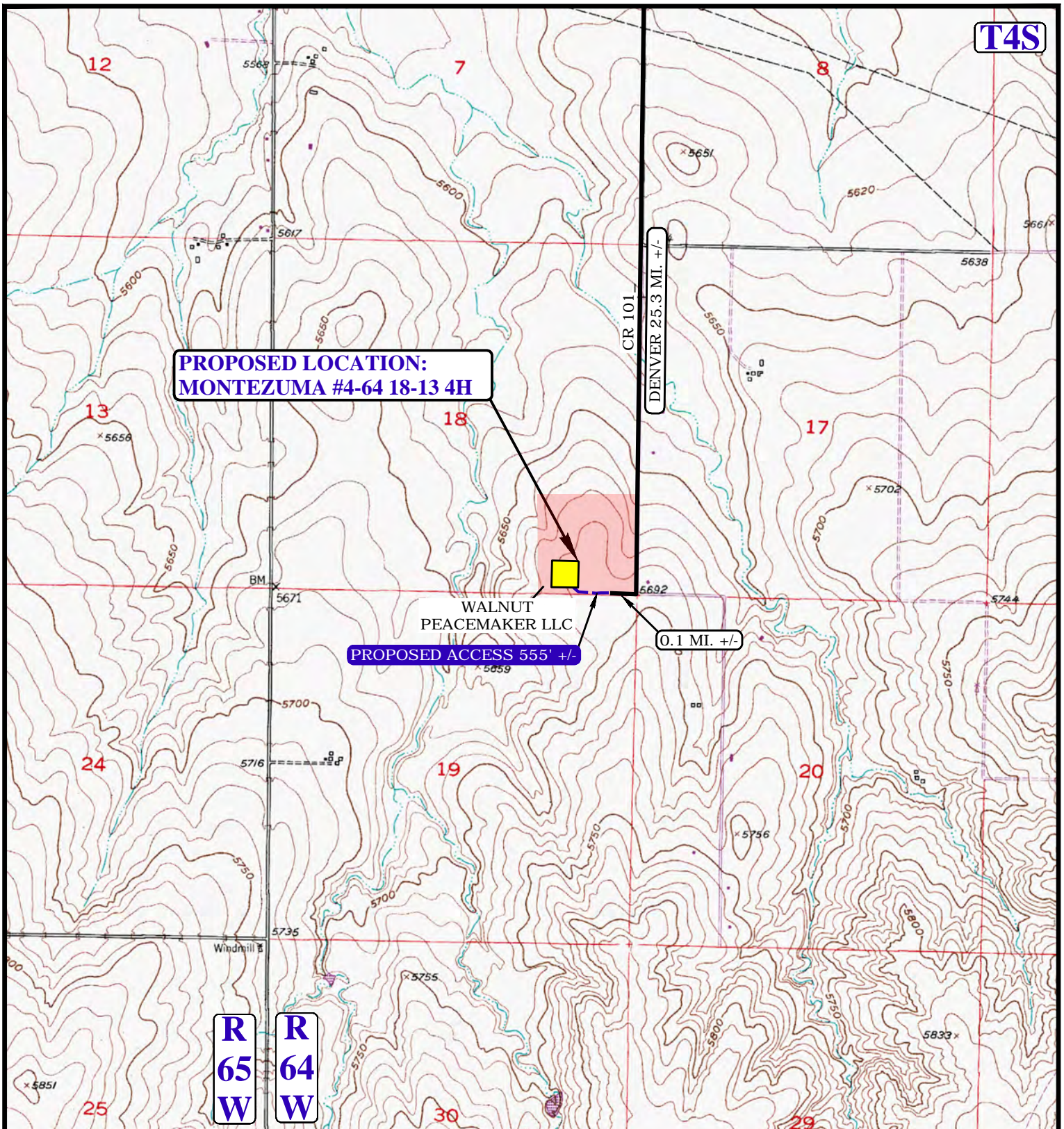
DRAWN BY: T.W.  
SCALE: 1:100,000

DATE DRAWN: 07-30-14  
REVISED: 03-20-15 J.L.G.

**ACCESS ROAD MAP**

**TOPO A**





NOTE: PARCEL DATA SHOWN HAS BEEN OBTAINED FROM VARIOUS SOURCES AND SHOULD BE USED FOR MAPPING, GRAPHIC AND PLANNING PURPOSES ONLY. NO WARRANTY IS MADE BY UINAH ENGINEERING AND LAND SURVEYING (UELS) FOR ACCURACY OF THE PARCEL DATA.

#### LEGEND:

— EXISTING ROAD  
 - - - PROPOSED ROAD

**ConocoPhillips Company**

**MONTEZUMA #4-64 18-13 4H  
 SECTION 18, T4S, R64W, 6th P.M.  
 300' FSL 1075' FEL**



**UELS, LLC**  
 Corporate Office \* 85 South 200 East  
 Vernal, UT 84078 \* (435) 789-1017

DRAWN BY: T.W.	DATE DRAWN: 07-30-14
SCALE: 1" = 2000'	REVISED: 3-20-15 J.L.G.
<b>ACCESS ROAD MAP</b>	<b>TOPO B</b>