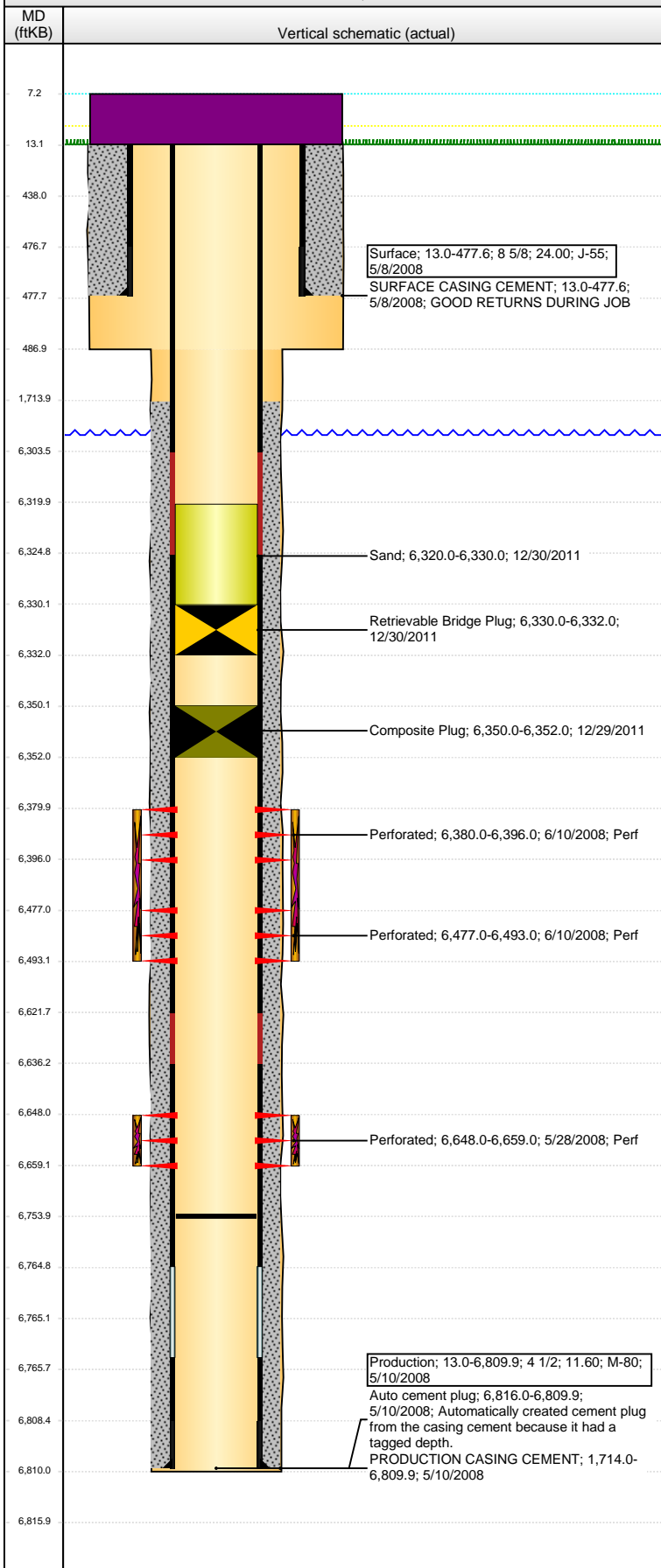


**Well Name: WELLS RANCH USX AA25-10**

VERTICAL - ORIGINAL HOLE, 5/27/2015 1:36:55 PM



## Well Header

API 05-123-25738	Business Unit DJ BASIN	District 15	Well Config VERTICAL
Original KB Elevation (ft) 4,739.00	KB - GL / MSL (ftKB) 13.00	Spud Date 5/8/2008	P & A Date

## Comment

ATTN: PHOENIX - THIS WELL HAS PARTNERS - SEE INSTRUCTIONS BELOW

## Directions To Well

From the intersection of WCR 68 and WCR 67, go East 2/10ths of a mile, then South 1.75 miles, then East 2.25 miles, then Northwest into location

## Congressional Location

Quarter 1	Quarter 2	Quarter 3	Quarter 4	Section	Township	Twnshp N...	Range	Rng E/W Dir
		NW	SE	25	6	N	63	W

## Bottom Hole Location

North-South Distance (ft)	From N or S Line	East-West Distance (ft)	From E or W Line

## Plug Back Total Depths

Date	Depth (ftKB)	Method	Com
5/10/2008	6,765.0	CASING TALLY	TOP PLUG
8/20/2008	6,754.0	TUBING TALLY	PUSHED REMAINDER OF PLUG TO HERE.

## Wellbore Sections

Section Des	Size (in)	Act Top, MD (ftKB)	Act Btm, MD (ftKB)
SURFACE	12 1/4	13.0	487.0
PRODUCTION	6 1/4	487.0	6,810.0

## Zone Statuses

Zone Name	Status Date	Status	Fluid Type	Job	Prod Method
NIOBRARA	6/27/2008	PR	Gas	DRILLING/CO...	
CODELL	6/27/2008	PR	Gas	DRILLING/CO...	

## Casing Strings

### Surface, 477.6ftKB

Casing Description	Run Date	OD (in)	Wt/Len (l...)	Grade	Top, MD (ft...)	MD (ftKB)
Surface	5/8/2008	8 5/8	24.00	J-55	13.0	477.6

### Production, 6,809.9ftKB

Casing Description	Run Date	OD (in)	Wt/Len (l...)	Grade	Top, MD (ft...)	MD (ftKB)
Production	5/10/2008	4 1/2	11.60	M-80	13.0	6,809.9

## Cement

Description	Top Depth (ftKB)	Bottom Depth (ftKB)
SURFACE CASING CEMENT	13.0	477.6
PRODUCTION CASING CEMENT	1,714.0	6,809.9

## Tubing Strings

Tubing Description	Run Date	String...	ID (in)	Wt (lb/ft)	Grade	Len (ft)	Set De...
Tubing - Production	8/21/2008	2 3/8	1.995	4.70	J-55	6,624.03	

## Perforation Data

Zone	Bnch/St g	Entered Shot Total	Top (ftKB)	Btm (ftKB)	Date
NIOBRARA, ORIGINAL HOLE	A	64	6,380.00	6,396.00	6/10/2008
NIOBRARA, ORIGINAL HOLE	B	64	6,477.00	6,493.00	6/10/2008
CODELL, ORIGINAL HOLE		44	6,648.00	6,659.00	5/28/2008

## Stimulations & Treatments

Date	Zone	Primary Job Type
6/10/2008	CODELL, ORIGINAL HOLE	DRILLING/COMPLETION - ORIGINAL
Technical Result	Tech Result Details	Tech Result Note
Success	According to Plan	

## Comment

CODELL: PRE JOB 5 MINUTE 2499 PSI TOOK THE RATE TO 22 BPM TREATMENT WENT WELL THE TUB ON THE BLENDER LEAKED BY WITH ACID GOING INTO THE TUB CAUSING IT TO OVER FLOW WAITING ON SODA ASH TO NEUTRALIZE THE ACID POST JOB 5 MINUTE OF 2977 P

Date	Zone	Primary Job Type
6/10/2008	NIOBRARA, ORIGINAL HOLE	DRILLING/COMPLETION - ORIGINAL
Technical Result	Tech Result Details	Tech Result Note
Success	According to Plan	

## Comment

NIOBRARA: HAD TO SHUT DOWN FOR 1/2HR WHILE TRYING TO FIX A LEAK ON THE TREATING IRON TREATMENT WENT WELL ONCE WE GOT STARTED POST JOB 5 MINUTE OF 3089 PSI

**Well Name: WELLS RANCH USX AA25-10**

VERTICAL - ORIGINAL HOLE, 5/27/2015 1:36:57 PM

## Other In Hole

Run Date	Des	OD (in)	Top (ftKB)	Btm (ftKB)
12/29/2011	Composite Plug	3.99	6,350.0	6,352.0
12/30/2011	Retrievable Bridge Plug	3.99	6,330.0	6,332.0
12/30/2011	Sand	3.99	6,320.0	6,330.0

## Logs

Date	Type	Top, MD (ftKB)	Btm, MD (ftKB)
5/19/2008	CBL/CCL/GR	0.0	6,690.0
5/19/2008	Pulsed Neutron	390.0	6,690.0
6/23/2011	GYRO	13.0	6,600.0

Surface: 13.0-477.6; 8 5/8; 24.00; J-55;  
5/8/2008  
SURFACE CASING CEMENT; 13.0-477.6;  
5/8/2008; GOOD RETURNS DURING JOB

Sand; 6,320.0-6,330.0; 12/30/2011

Retrievable Bridge Plug; 6,330.0-6,332.0;  
12/30/2011

Composite Plug; 6,350.0-6,352.0; 12/29/2011

Perforated; 6,380.0-6,396.0; 6/10/2008; Perf

Perforated; 6,477.0-6,493.0; 6/10/2008; Perf

Perforated; 6,648.0-6,659.0; 5/28/2008; Perf

Production; 13.0-6,809.9; 4 1/2; 11.60; M-80;  
5/10/2008  
Auto cement plug; 6,816.0-6,809.9;  
5/10/2008; Automatically created cement plug  
from the casing cement because it had a  
tagged depth.  
PRODUCTION CASING CEMENT; 1,714.0-  
6,809.9; 5/10/2008