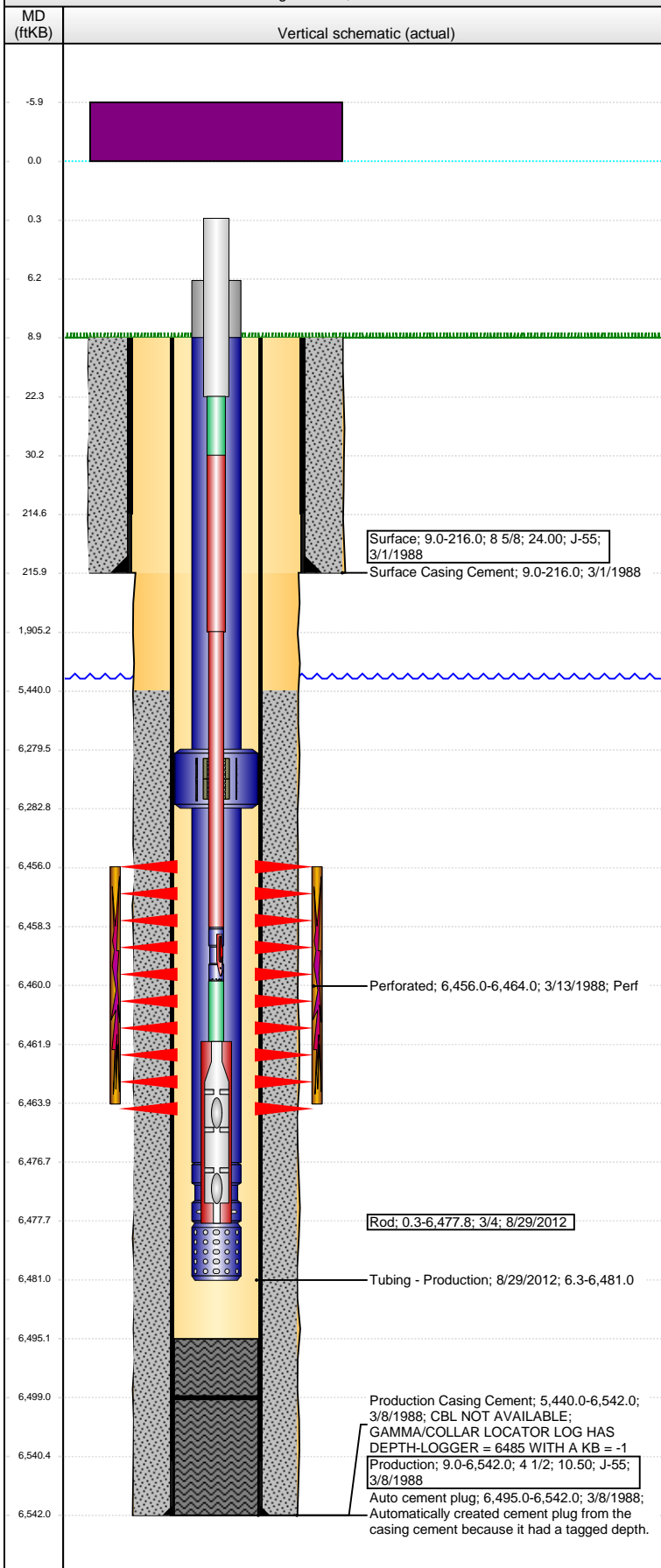


**Well Name:** LILLI UNIT 6-12

VERTICAL - Original Hole, 5/27/2015 8:26:47 AM



## Well Header

API	Business Unit	District	Well Config
05-123-13874	DJ BASIN	25	VERTICAL
Original KB Elevation (ft)	KB - GL / MSL (ftKB)	Spud Date	P & A Date
4,743.00	9.00	3/1/1988	

## Comment

PREVIOUSLY KNOWN AS THE TRAVELERS 12-6.  
NO TUBING/ROD DETAIL IN DENVER FILES

## Directions To Well

HIWAY 14 AND WCR 129, NORTH 5.2 MILES (TO WCR 96), WEST 4.0 MILES, SOUTH 0.4 MILES AND WEST 0.3 MILES INTO.

## Congressional Location

Quarter 1	Quarter 2	Quarter 3	Quarter 4	Section	Township	Twnshp N...	Range	Rng E/W Dir
		SE	NW	12	8	N	59	W

## Bottom Hole Location

North-South Distance (ft)	From N or S Line	East-West Distance (ft)	From E or W Line

## Plug Back Total Depths

Date	Depth (ftKB)	Method	Com
3/8/1988	6,503.0	CASING TALLY	NOTE IN FILE INDICATES PBTD = 6503 FOLLOWI...
3/13/1988	6,495.0	CASED HOLE LOG	GAMMA/CCL DEPTH DRILLER, CORRECTED TO ...
1/9/2006	6,498.0	TAG	TAGGED BOTTOM WITH TUBING
8/28/2012	6,499.1	TAG	TBG TALLY MEASUREMENT.

## Wellbore Sections

Section Des	Size (in)	Act Top, MD (ftKB)	Act Btm, MD (ftKB)
SURFACE	12 1/4	9.0	216.0
PRODUCTION	7 7/8	216.0	6,542.0

## Zone Statuses

Zone Name	Status Date	Status	Fluid Type	Job	Prod Method
D SAND	3/19/1988	PR		DRILLING/CO...	

## Casing Strings

### Surface, 216.0ftKB

Casing Description	Run Date	OD (in)	Wt/Len (l...	Grade	Top, MD (ft...	MD (ftKB)
Surface	3/1/1988	8 5/8	24.00	J-55	9.0	216.0

### Production, 6,542.0ftKB

Casing Description	Run Date	OD (in)	Wt/Len (l...	Grade	Top, MD (ft...	MD (ftKB)
Production	3/8/1988	4 1/2	10.50	J-55	9.0	6,542.0

## Cement

Description	Top Depth (ftKB)	Bottom Depth (ftKB)
Surface Casing Cement	9.0	216.0
Production Casing Cement	5,440.0	6,542.0

## Tubing Strings

Tubing Description	Run Date	String...	ID (in)	Wt (lb/ft)	Grade	Len (ft)	Set De...
Tubing - Production	1/6/2006	2 3/8	1.995	4.70	J-55	6,479.00	
Tubing Description	Run Date	String...	ID (in)	Wt (lb/ft)	Grade	Len (ft)	Set De...
Tubing - Production	8/29/2012	2 3/8	1.995	4.70	J-55	6,474.64	

## Tubing Components

Item Des	OD (in)	Wt (lb/ft)	Grade	Jts	Len (ft)	Btm (ftKB)	Btm (TVD) (ftKB)
Stretch Correction	2 3/8	4.70	J-55	1	2.67	9.0	
EUE 8rd Tubing	2 3/8	4.70	J-55	194	6,270.51	6,279.5	
Anchor/catcher	3.99	4.70	J-55	1	3.25	6,282.8	
EUE 8rd Tubing	2 3/8	4.70	J-55	6	193.93	6,476.7	
Pump Seating Nipple	2 3/8	4.70	J-55	1	1.13	6,477.8	
Perforated Joint	2 3/8	4.70	J-55	1	3.15	6,481.0	

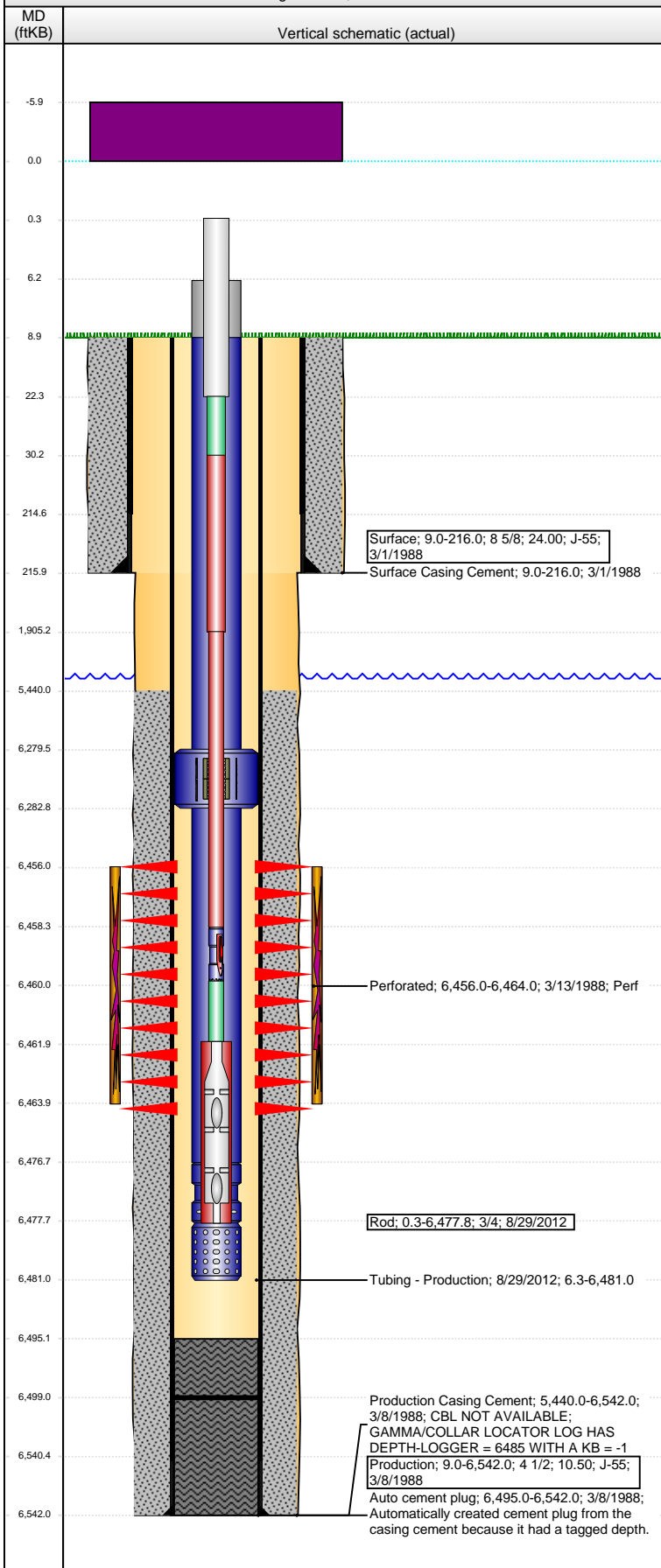
## Rods & Pumps

Rod Description	Run Date	Set Depth (ftKB)
Rod	8/29/2012	6,477.8
Comment		

Item Description	OD Nominal (in)	Joints	Length (ft)
Polished Rod	1 1/4	1	22.00
Item Description	OD Nominal (in)	Joints	Length (ft)
Pony Rod	7/8	1	8.00
Item Description	OD Nominal (in)	Joints	Length (ft)
Sucker Rod	7/8	75	1,875.00

**Well Name: LILLI UNIT 6-12**

VERTICAL - Original Hole, 5/27/2015 8:26:48 AM



Item Description	OD Nominal (in)	Joints	Length (ft)
Sucker Rod	3/4	182	4,553.00
Item Description	OD Nominal (in)	Joints	Length (ft)
Hooks Tool	3/4	1	1.50
Item Description	OD Nominal (in)	Joints	Length (ft)
Pony Rod	3/4	1	2.00
Item Description	OD Nominal (in)	Joints	Length (ft)
Rod Insert Pump	1 1/2	1	16.00
API Pump Type	Barrel Length (ft)	Seating Assembly Type	
R	16.00	C	
Perforation Data			
Zone	Bnch/St g	Entered Shot Total	Date
D SAND, Original Hole		33	3/13/1988
Stimulations & Treatments			
Date	Zone	Primary Job Type	
3/16/1988	D SAND, Original Hole	DRILLING/COMPLETION - ORIGINAL	
Technical Result		Tech Result Details	Tech Result Note
Comment			
Date	Zone	Primary Job Type	
3/14/1988	D SAND, Original Hole	DRILLING/COMPLETION - ORIGINAL	
Technical Result		Tech Result Details	Tech Result Note
Comment			
PRE-FRAC BREAK DOWN TREATMENT, 1% HCL SOLUTION PLUS APPROX 50 BALLS			
Other In Hole			
Run Date	Des	OD (in)	Top (ftKB)
			Btm (ftKB)
Logs			
Date	Type	Top, MD (ftKB)	Btm, MD (ftKB)
3/7/1988	COMPENSATED DENSITY	5,600.0	6,539.0
3/7/1988	INDUCTION	200.0	6,539.0
3/13/1988	GAMMA RAY	5,840.0	6,485.0