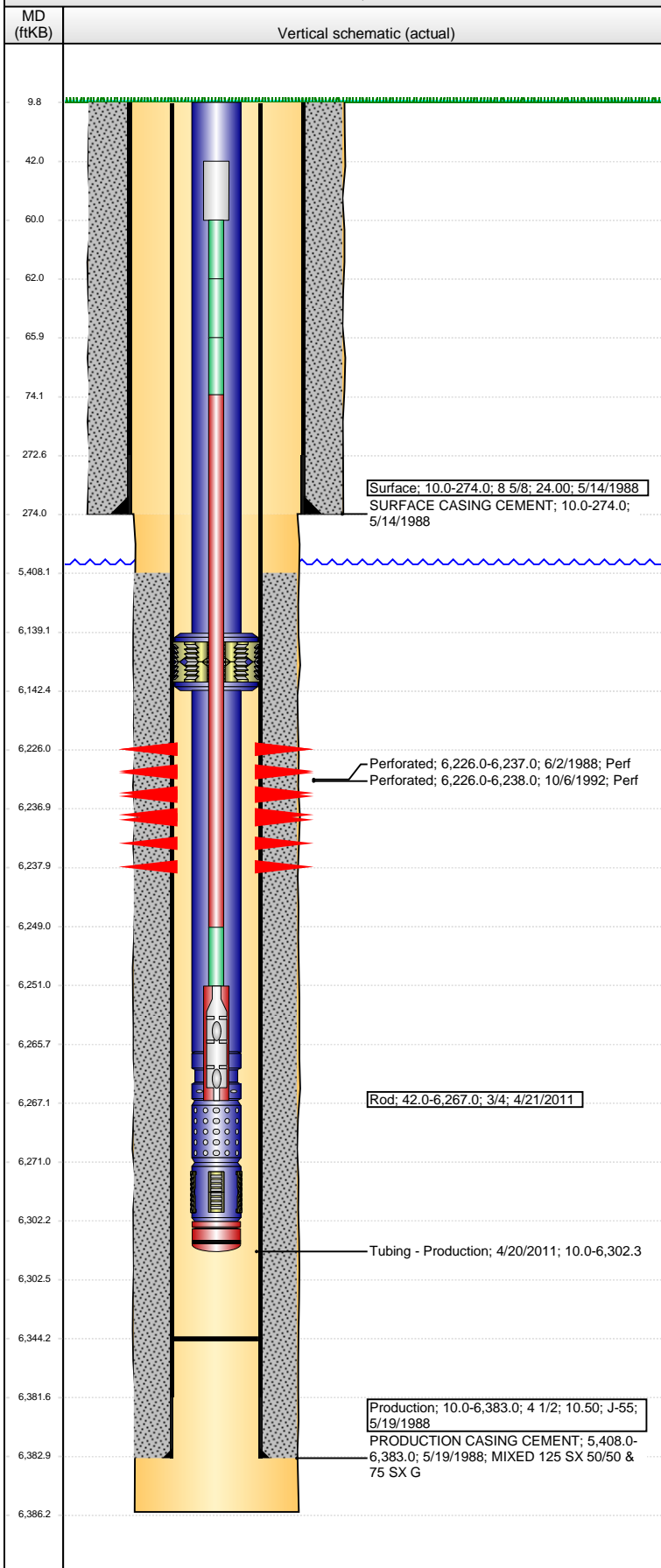


Well Name: LILLI UNIT 05-02

VERTICAL - ORIGINAL HOLE, 5/26/2015 1:41:04 PM



Well Header

API 05-123-13966	Business Unit DJ BASIN	District 25	Well Config VERTICAL
Original KB Elevation (ft) 4,699.00	KB - GL / MSL (ftKB) 10.00	Spud Date 5/13/1988	P & A Date

Comment

T/O DATE FROM STATE COMPL RPT; WELL WAS NOT FRAC'D - COMPLTD NATURALLY AFTER PERF 1988; VERY SKETCHY WELL INFORMATION POST-ORIG DRILL

Directions To Well

RD 96 & 127 1/2, N 7/10, E 5/10 INTO.

Congressional Location

Quarter 1	Quarter 2	Quarter 3	Quarter 4	Section	Township	Twntshp N...	Range	Rng E/W Dir
		SW	NW	2	8	N	58	W

Bottom Hole Location

North-South Distance (ft)	From N or S Line	East-West Distance (ft)	From E or W Line

Plug Back Total Depths

Date	Depth (ftKB)	Method	Com
5/27/1988	6,319.0	CASED HOLE LOG	DEPTH LOGGER
4/19/2011	6,344.0	TAG	

Wellbore Sections

Section Des	Size (in)	Act Top, MD (ftKB)	Act Btm, MD (ftKB)
SURFACE	12 1/4	10.0	274.0
PRODUCTION	7 7/8	274.0	6,386.0

Zone Statuses

Zone Name	Status Date	Status	Fluid Type	Job	Prod Method
D SAND	6/24/1988	PR		DRILLING/CO...	

Casing Strings

Surface, 274.0ftKB

Casing Description	Run Date	OD (in)	Wt/Len (l...)	Grade	Top, MD (ft...)	MD (ftKB)
Surface	5/14/1988	8 5/8	24.00		10.0	274.0

Production, 6,383.0ftKB

Casing Description	Run Date	OD (in)	Wt/Len (l...)	Grade	Top, MD (ft...)	MD (ftKB)
Production	5/19/1988	4 1/2	10.50	J-55	10.0	6,383.0

Cement

Description	Top Depth (ftKB)	Bottom Depth (ftKB)
SURFACE CASING CEMENT	10.0	274.0
PRODUCTION CASING CEMENT	5,408.0	6,383.0

Tubing Strings

Tubing Description	Run Date	String...	ID (in)	Wt (lb/ft)	Grade	Len (ft)	Set De...
Tubing - Production	10/7/1992						
Tubing - Production	3/13/1993	2 3/8				6,315.00	
Tubing - Production	2/6/1997	2 3/8				6,325.00	
Tubing - Production	4/20/2011	2 3/8	1.995	4.70	J-55	6,292.33	

Tubing Components

Item Des	OD (in)	Wt (lb/ft)	Grade	Jts	Len (ft)	Btm (ftKB)	Btm (TVD) (ftKB)
Tubing	2 3/8	4.70	J-55	198	6,129.20	6,139.2	
Anchor/catcher	3.99	4.70	J-55	1	3.20	6,142.4	
Tubing	2 3/8	4.70	J-55	4	123.50	6,265.9	
Pump Seating Nipple	2 3/8	4.70	N-80	1	1.10	6,267.0	
Perforated Joint	2 3/8	4.70	J-55	1	4.00	6,271.0	
Mud Anchor	2 3/8	4.70	J-55	1	31.11	6,302.1	
Bull Plug	2 3/8	4.70	N-80	1	0.22	6,302.3	

Rods & Pumps

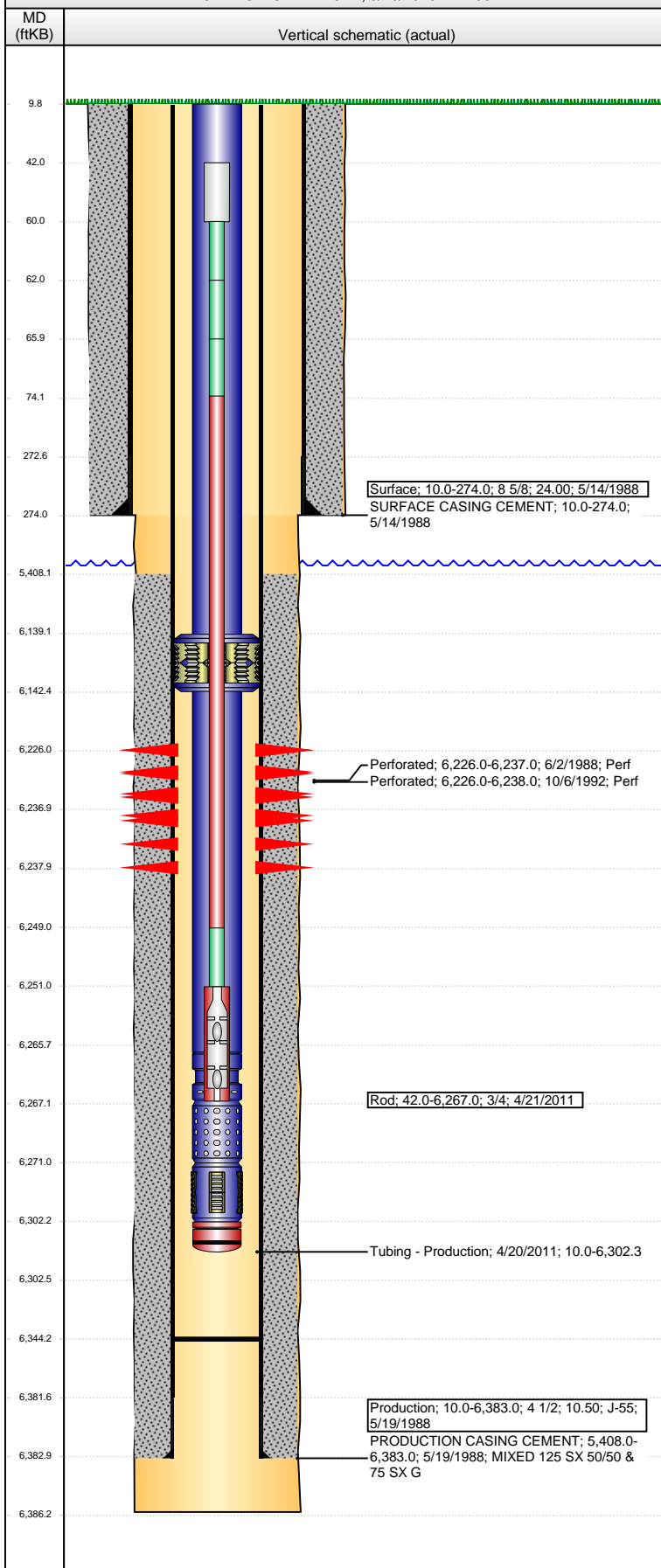
Rod Description	Run Date	Set Depth (ftKB)
Rod	4/21/2011	6,267.0

Comment

Item Description	OD Nominal (in)	Joints	Length (ft)
Polished Rod	1 1/4	1	18.00

Well Name: LILLI UNIT 05-02

VERTICAL - ORIGINAL HOLE, 5/26/2015 1:41:06 PM



Item Description	OD Nominal (in)	Joints	Length (ft)
Pony Rod	3/4	1	2.00
Item Description	OD Nominal (in)	Joints	Length (ft)
Pony Rod	3/4	1	4.00
Item Description	OD Nominal (in)	Joints	Length (ft)
Pony Rod	3/4	1	8.00
Item Description	OD Nominal (in)	Joints	Length (ft)
Sucker Rod	3/4	247	6,175.00
Item Description	OD Nominal (in)	Joints	Length (ft)
Pony Rod	3/4	1	2.00
Item Description	OD Nominal (in)	Joints	Length (ft)
RHBC Pump - BHD	1 1/4	1	16.00
API Pump Type	Barrel Length (ft)	Seating Assembly Type	
R	16.00	C	
Perforation Data			
Zone	Bnch/St g	Entered Shot Total	Top (ftKB) Btm (ftKB) Date
D SAND, ORIGINAL HOLE		27	6,226.00 6,237.00 6/2/1988
D SAND, ORIGINAL HOLE		25	6,226.00 6,238.00 10/6/1992
Other In Hole			
Run Date	Des	OD (in)	Top (ftKB) Btm (ftKB)
Logs			
Date	Type	Top, MD (ftKB)	Btm, MD (ftKB)
5/17/1988	COMPENSATED DENSITY	5,300.0	6,381.0
5/17/1988	GAMMA RAY	5,296.0	6,381.0
5/17/1988	INDUCTION	200.0	6,381.0
5/27/1988	CEMENT BOND	5,300.0	6,319.0