



Kerr-McGee Oil & Gas Onshore LP

A subsidiary of Anadarko Petroleum Corporation

1099 18th Street
Denver, CO 80202
720-929-6000

March 9, 2015

Matt Lepore
Director, Colorado Oil and Gas Conservation Commission
Department of Natural Resources
The Chancery Building
1120 Lincoln Street, Suite 801
Denver, CO 80203

Re: **30 Day Certification Letter - 318A.e**
POWERS 13N-22HZ (Doc No. 400802861)
Township 2 North, Range 65 West
Section 22: NENW
Unit Acreage: 240 acres
Unit Spacing: 02N-65W-Sec 15 SWSW
02N-65W-Sec 22 W2W2
02N-65W-Sec 27 NWNW
Weld County, Colorado

Dear Director Lepore:

Kerr McGee Oil and Gas Onshore LP ("KMG") hereby certifies that KMG owns one hundred percent (100%) of the leasehold interest in the mineral rights in the proposed spacing unit. KMG hereby respectfully requests approval of this boundary well.

If you have any questions or issues regarding this permit, please contact Cheryl Light at (720) 929-6461.

Sincerely,

Kerr-McGee Oil and Gas Onshore LP

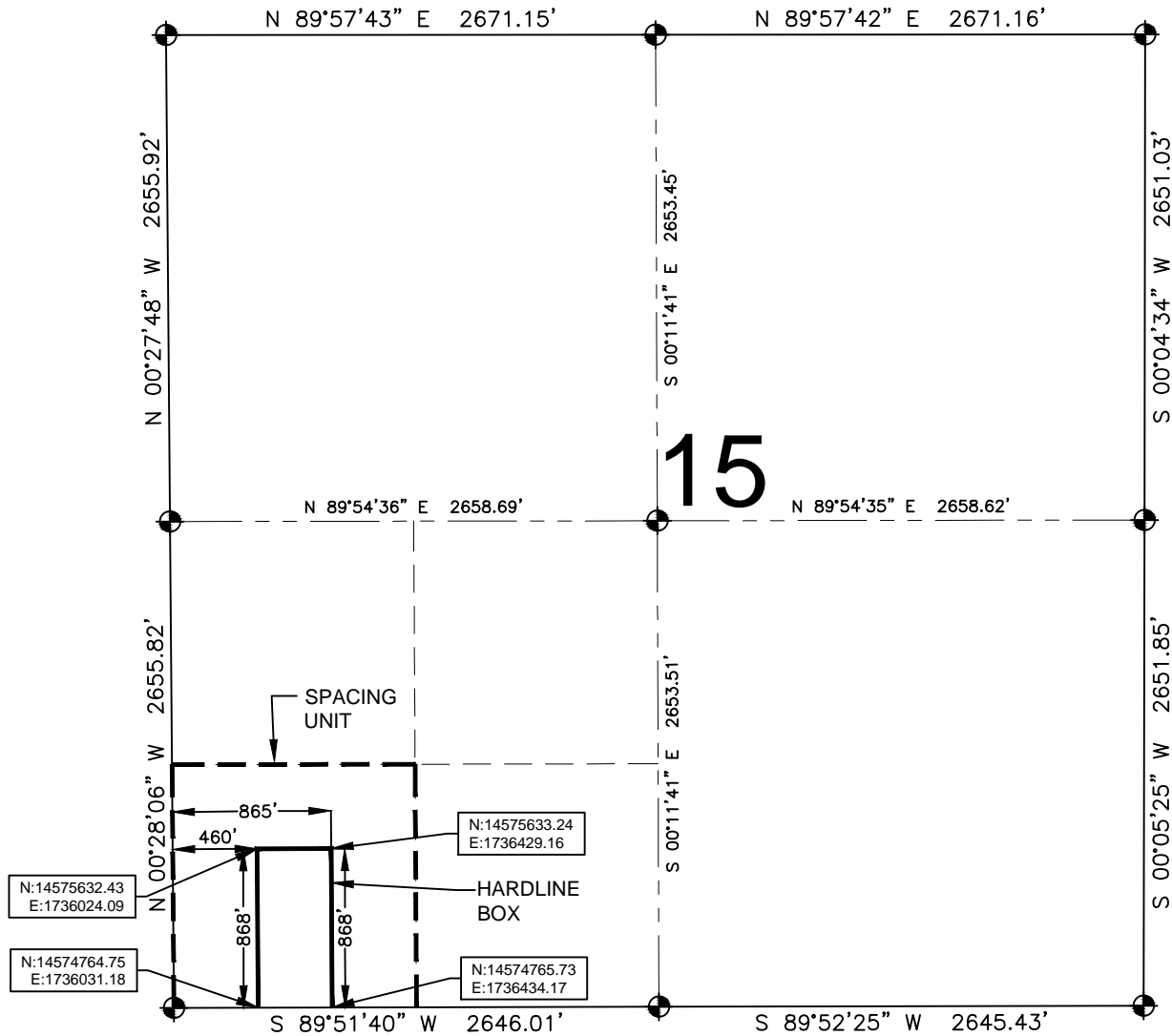
A handwritten signature in blue ink that reads 'RPowers'.

Ronett Powers
Regulatory Analyst II

Enclosure

HARDLINE EXHIBIT: POWERS 13N-22HZ

SECTION 15, TOWNSHIP 2 NORTH, RANGE 65 WEST, 6TH P.M.



LEGEND

- = EXISTING MONUMENT
- ⊙ = PROPOSED HEEL
- = CALCULATED POSITION
- ⊕ = BOTTOM HOLE
- BH = BOTTOM HOLE

HEEL LOCATION

UTM 13
LATITUDE= 40.131108°
LONGITUDE= 104.657491°

LATITUDE= 40°07'51.988"
LONGITUDE= 104°39'26.967"

QRT/QRT SECTIONS WITHIN PATH OF THE HARDLINE

SWSW, SEC. 15

BOTTOM HOLE LOCATION

NAD83
LATITUDE= 40.116911°
LONGITUDE= 104.657471°

LATITUDE= 40°07'00.880"
LONGITUDE= 104°39'26.894"

AVAILABLE FOOTAGE

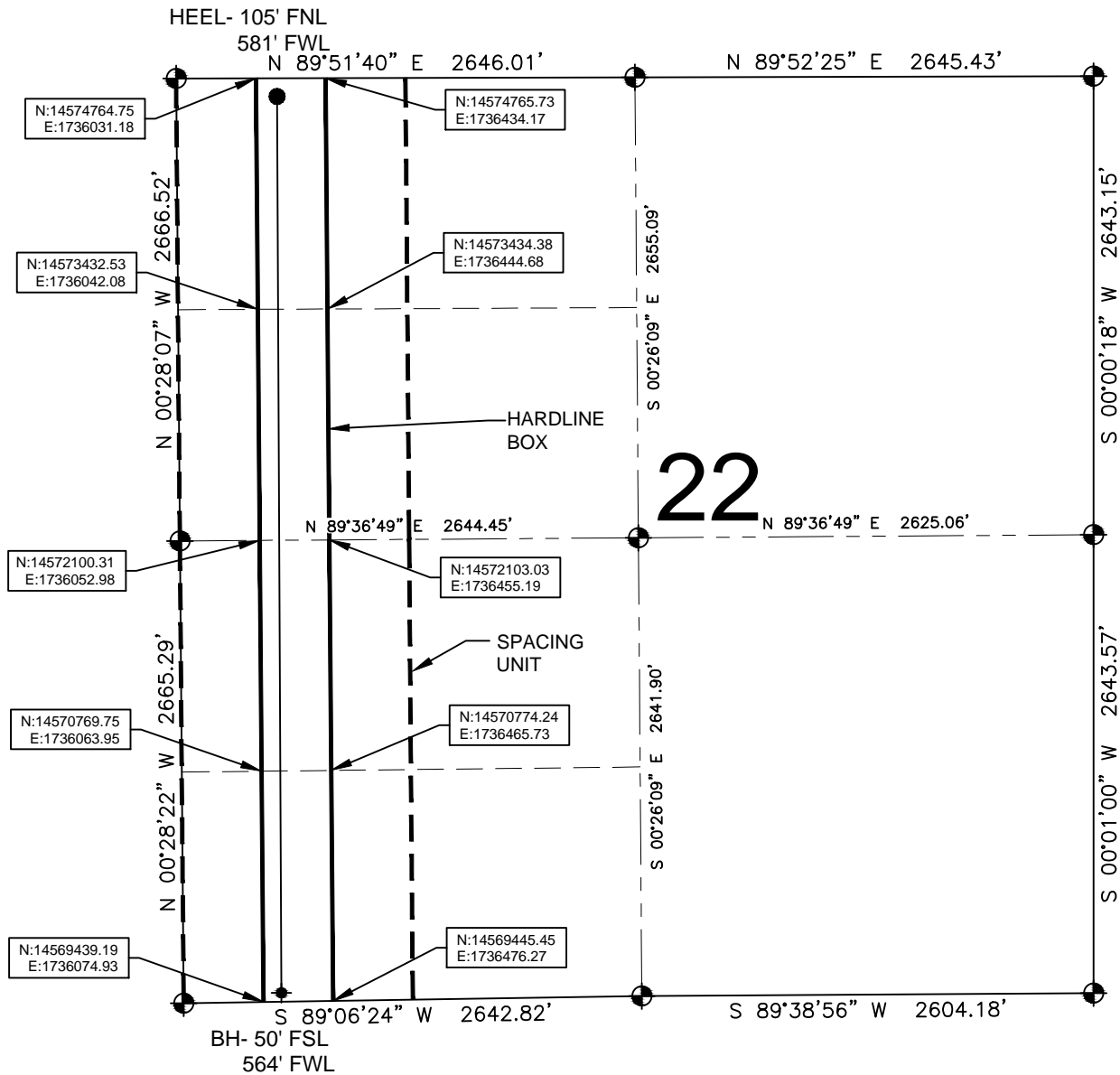
7046'

NOTES:

- THIS DOCUMENT IS NOT A LAND SURVEY PLAT OR IMPROVEMENT SURVEY PLAT. THIS DOCUMENT DOES NOT REFLECT A FIELD SURVEY. SECTION BREAKDOWN, MONUMENTATION AND HORIZONTAL POSITIONS SHOWN ARE BASED ON THE HEEL AND BOTTOM HOLE LOCATION PROVIDED BY ANADARKO PETROLEUM CORPORATION

HARDLINE EXHIBIT: POWERS 13N-22HZ

SECTION 22, TOWNSHIP 2 NORTH, RANGE 65 WEST, 6TH P.M.



LEGEND

- = EXISTING MONUMENT
- = PROPOSED HEEL
- = CALCULATED POSITION
- ◆ = BOTTOM HOLE
- BH = BOTTOM HOLE

QRT/QRT SECTIONS WITHIN PATH OF THE HARDLINE





- NWNW, SEC. 22
- SWNW, SEC. 22
- NWSW, SEC. 22
- SWSW, SEC. 22

NOTES:

- THIS DOCUMENT IS NOT A LAND SURVEY PLAT OR IMPROVEMENT SURVEY PLAT. THIS DOCUMENT DOES NOT REFLECT A FIELD SURVEY. SECTION BREAKDOWN, MONUMENTATION AND HORIZONTAL POSITIONS SHOWN ARE BASED ON THE HEEL AND BOTTOM HOLE LOCATION PROVIDED BY ANADARKO PETROLEUM CORPORATION

SECTION 27, TOWNSHIP 2 NORTH, RANGE 65 WEST, 6TH P.M.



-  = EXISTING MONUMENT  = BOTTOM HOLE
 = PROPOSED HEEL BH = BOTTOM HOLE
 = CALCULATED POSITION

NWNW, SEC. 27

NOTES:

1. THIS DOCUMENT IS NOT A LAND SURVEY PLAT OR IMPROVEMENT SURVEY PLAT. THIS DOCUMENT DOES NOT REFLECT A FIELD SURVEY. SECTION BREAKDOWN, MONUMENTATION AND HORIZONTAL POSITIONS SHOWN ARE BASED ON THE HEEL AND BOTTOM HOLE LOCATION PROVIDED BY ANADARKO PETROLEUM CORPORATION

PREPARED BY:

PFS  Petroleum Field Services, LLC
7535 Hilltop Circle
Denver, CO 80221

SHEET 3 OF 3

DRAWING DATE: 02-17-15		HEEL LOCATION: NW 1/4 NW 1/4, SEC. 22, T2N, R65W, 6TH P.M. WELD COUNTY, COLORADO
BY: SMF	CHECKED: ATK	

