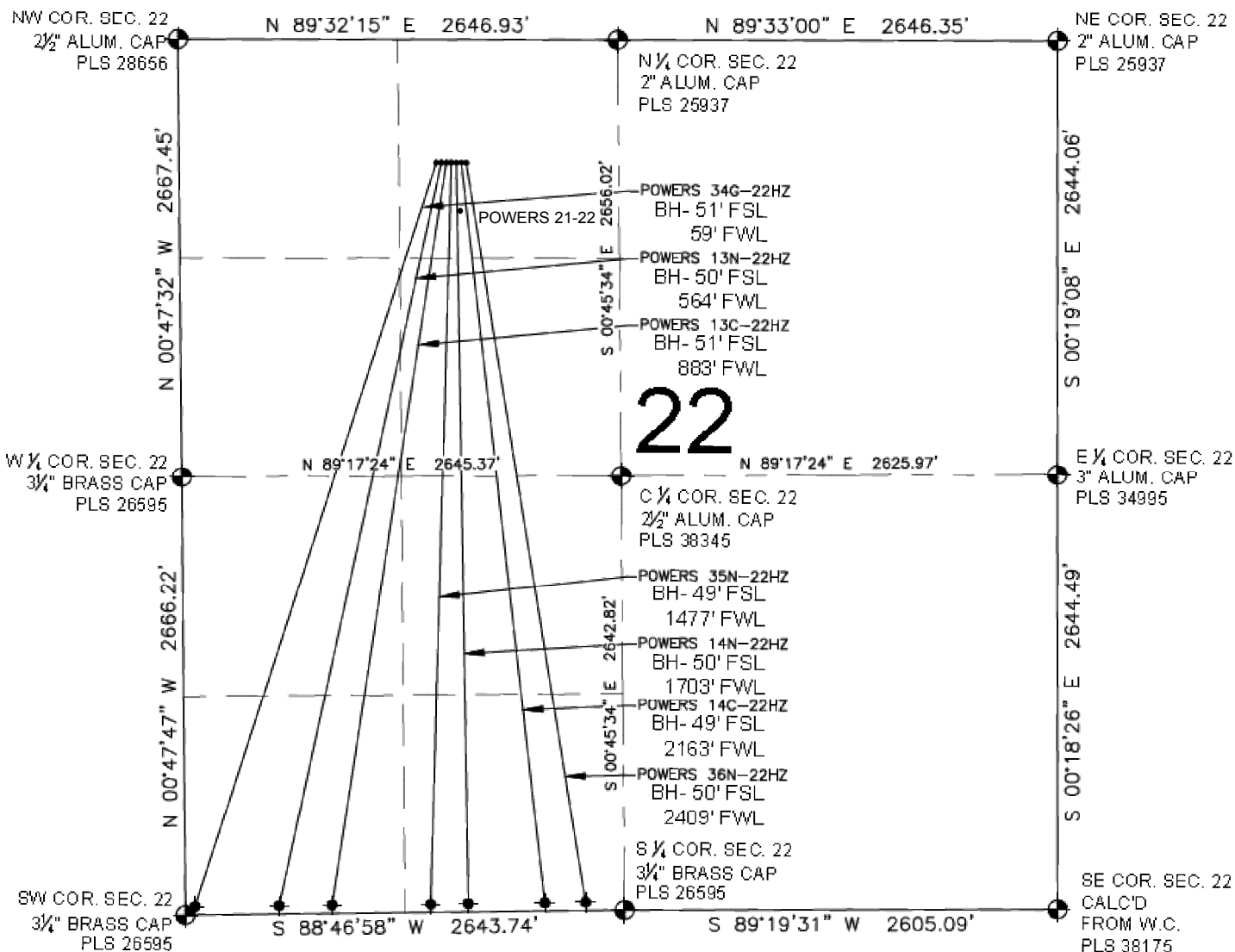


# POWERS 35N-22HZ MULTI-WELL PLAN

SECTION 22, TOWNSHIP 2 NORTH, RANGE 65 WEST, 6TH P.M.



## LEGEND

- = EXISTING MONUMENT
- = PROPOSED WELL
- ◆ = BOTTOM HOLE
- ◆ = EXISTING WELL
- BH = BOTTOM HOLE
- = CALCULATED POSITION

## NOTES:

POWERS 34G-22HZ TO BE AT 750' FNL, 1549' FWL.  
BOTTOM HOLE AT 51' FSL & 59' FWL,  
POWERS 13N-22HZ TO BE AT 750' FNL, 1579' FWL.  
BOTTOM HOLE AT 50' FSL & 564' FWL,  
POWERS 13C-22HZ TO BE AT 750' FNL, 1609' FWL.  
BOTTOM HOLE AT 51' FSL & 883' FWL,  
POWERS 35N-22HZ TO BE AT 750' FNL, 1639' FWL.  
BOTTOM HOLE AT 49' FSL & 1477' FWL,  
POWERS 14N-22HZ TO BE AT 750' FNL, 1669' FWL.  
BOTTOM HOLE AT 50' FSL & 1703' FWL,  
POWERS 14C-22HZ TO BE AT 750' FNL, 1699' FWL.  
BOTTOM HOLE AT 49' FSL & 2163' FWL,  
POWERS 36N-22HZ TO BE AT 750' FNL, 1729' FWL.  
BOTTOM HOLE AT 50' FSL & 2409' FWL.

PREPARED BY:

**PFS**



Petroleum Field Services, LLC  
7535 Hilltop Circle  
Denver, CO 80221

KERR-MCGEE OIL & GAS ONSHORE LP

FIELD DATE:  
10-14-14

DRAWING DATE:  
02-16-15

SURFACE LOCATION:

NE 1/4, NW 1/4, SEC. 22, T2N, R65W, 6TH P.M.

WELD COUNTY, COLORADO

