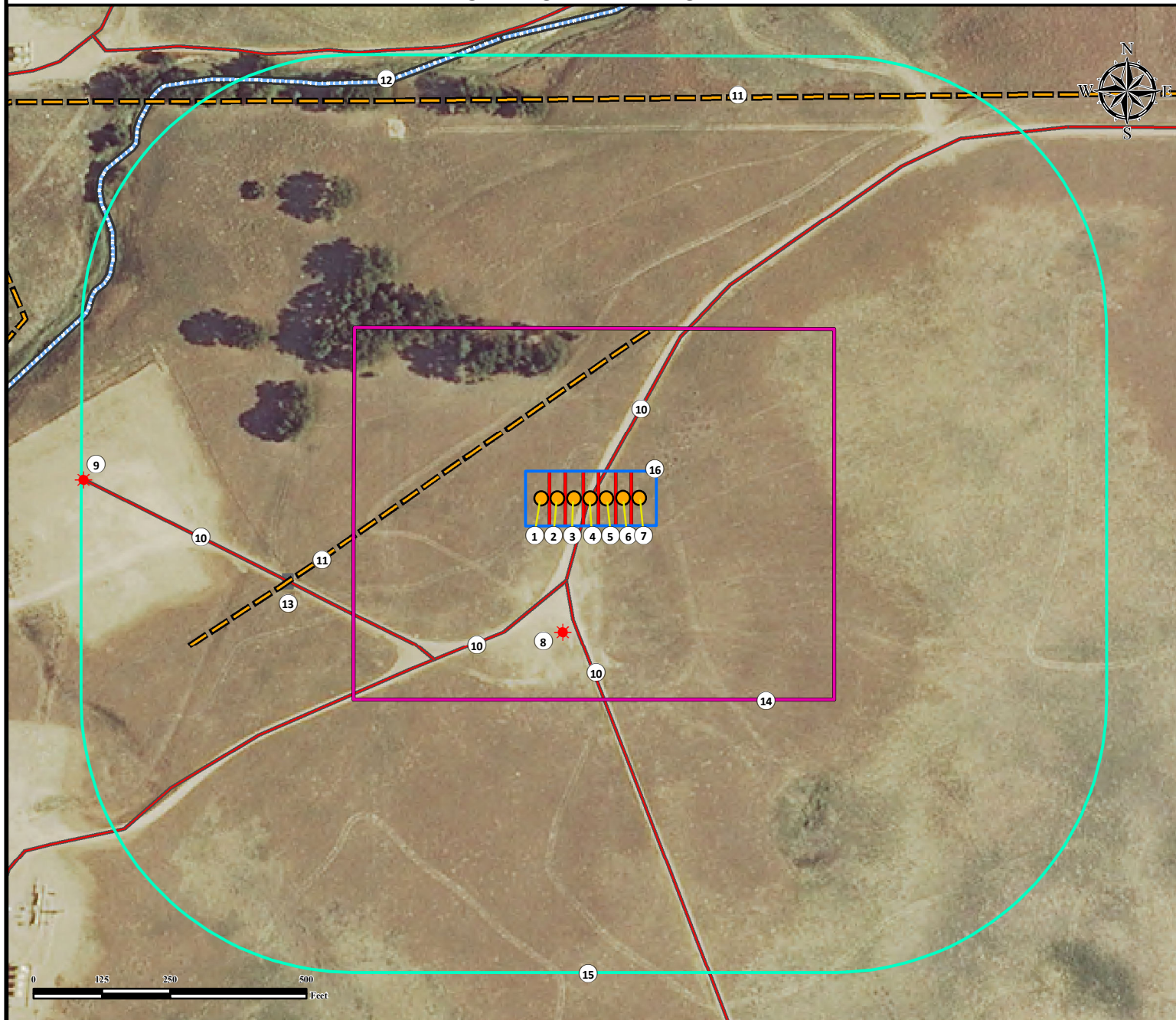


POWERS 35N-22HZ PAD LOCATION DRAWING



1. Proposed Well POWERS 34G-22HZ.
2. Proposed Well POWERS 13N-22HZ.
3. Proposed Well POWERS 13C-22HZ.
4. Proposed Well POWERS 35N-22HZ.
5. Proposed Well POWERS 14N-22HZ.
6. Proposed Well POWERS 14C-22HZ.
7. Proposed Well POWERS 36N-22HZ.
8. Existing Well POWERS 21-22 is $\pm 250'$ SW.
9. Existing Well POWERS X22-04 is $\pm 931'$ W.

10. Roads are $\pm 0'$ N, $\pm 158'$ SW, $\pm 158'$ SW, and $\pm 413'$ SW.
11. Fences are $\pm 193'$ NW and $\pm 732'$ N.
12. Stream is $\pm 847'$ NW.
13. Gate is $\pm 576'$ SW.
14. Operational Disturbance Area.
15. 500' Buffer.
16. Pump Jack Operations Area.

Legend

- | | | |
|---|---|--|
| ● Proposed Well | — Private Road | Disturbance Area |
| ★ Existing Well | - - - Fence | 500' Radius |
| ■ Gate | ⋯ Stream | Pump Jack Operations Area |

Reference Location

All measurements are made from
Reference Well POWERS 35N-22HZ
Lat: 40.129333° Long: -104.653697°
(NAD83)
Elevation: 4884 Feet

Surface Use: Rangeland

Nearest Building Unit: $\pm 2215'$ NW.

PREPARED FOR:



FIELD DATE:
12-15-14

DRAWING DATE:
02-12-15

BY:
FMB

CHECKED BY:
DRF

SITE NAME:
POWERS 35N-22HZ PAD

SURFACE LOCATION:
NE1/4 NW1/4, SEC. 22, T2N, R65W, 6TH P.M.
WELD COUNTY, COLORADO

KerrMcGee
**KERR-MCGEE OIL
& GAS ONSHORE LP**