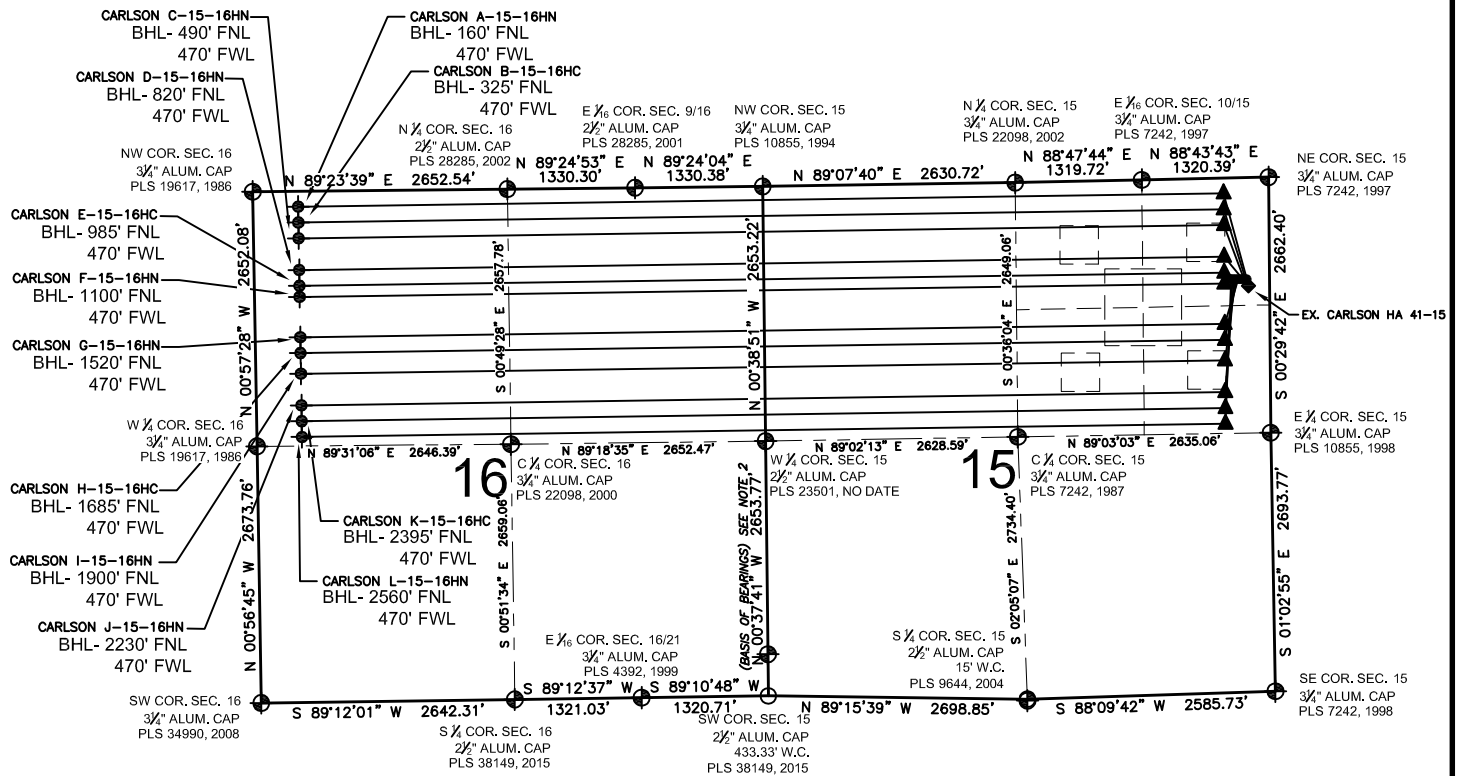


# CARLSON 15-D PAD MULTI-WELL PLAN



## NOTES:

- CARLSON A-15-16HN TO BE AT 1057' FNL, 234' FEL. BOTTOM HOLE AT 160' FNL & 470' FWL, SEC 16.
- CARLSON B-15-16HC TO BE AT 1057' FNL, 249' FEL. BOTTOM HOLE AT 325' FNL & 470' FWL, SEC 16.
- CARLSON C-15-16HN TO BE AT 1057' FNL, 264' FEL. BOTTOM HOLE AT 490' FNL & 470' FWL, SEC 16.
- CARLSON D-15-16HN TO BE AT 1056' FNL, 279' FEL. BOTTOM HOLE AT 820' FNL & 470' FWL, SEC 16.
- CARLSON E-15-16HC TO BE AT 1056' FNL, 294' FEL. BOTTOM HOLE AT 985' FNL & 470' FWL, SEC 16.
- CARLSON F-15-16HN TO BE AT 1056' FNL, 309' FEL. BOTTOM HOLE AT 1100' FNL & 470' FWL, SEC 16.
- CARLSON G-15-16HN TO BE AT 1055' FNL, 324' FEL. BOTTOM HOLE AT 1520' FNL & 470' FWL, SEC 16.
- CARLSON H-15-16HC TO BE AT 1055' FNL, 339' FEL. BOTTOM HOLE AT 1685' FNL & 470' FWL, SEC 16.
- CARLSON I-15-16HN TO BE AT 1055' FNL, 354' FEL. BOTTOM HOLE AT 1900' FNL & 470' FWL, SEC 16.
- CARLSON J-15-16HN TO BE AT 1054' FNL, 369' FEL. BOTTOM HOLE AT 2230' FNL & 470' FWL, SEC 16.
- CARLSON K-15-16HC TO BE AT 1054' FNL, 384' FEL. BOTTOM HOLE AT 2395' FNL & 470' FWL, SEC 16.
- CARLSON L-15-16HN TO BE AT 1054' FNL, 399' FEL. BOTTOM HOLE AT 2560' FNL & 470' FWL, SEC 16.

EX. WELL CARLSON HA 41-15 IS 1135' FNL & 227' FEL.

## LEGEND

- ⊕ = EXISTING MONUMENT
- = CALCULATED POSITION
- = PROPOSED WELL
- ▲ = LANDING POINT
- ⬤ = BOTTOM HOLE
- ◆ = EXISTING WELL
- LP = LANDING POINT
- BH = BOTTOM HOLE

## NOTES:

- THIS FIELD SURVEY CONFORMS TO THE MINIMUM STANDARDS SET BY THE C.O.G.C.C., RULE NO. 215
- BEARINGS ARE BASED UPON THE ASSUMPTION THAT THE WEST LINE OF THE SOUTHWEST QUARTER OF SECTION 15, BEARS N00°37'41"W BETWEEN THE MONUMENTS SHOWN HEREON.
- GRID DISTANCES ARE SHOWN, AS GPS MEASURED IN THE FIELD, WITH TIES TO WELLS MEASURED PERPENDICULAR TO SECTION LINES. TO GET GROUND DISTANCES MULTIPLY THE SHOWN DISTANCE BY 1.000258264.
- FIELD VERIFICATION OF MONUMENTS COMPLETED FEBRUARY 11, 2015. WELL STAKING COMPLETED ON MARCH 20, 2015.

PREPARED BY:



FIELD DATE:

03-20-15

DRAWING DATE:

03-24-15

BY:

KAD

CHECKED BY:

SMF

SITE NAME:

CARLSON 15-D PAD

SURFACE LOCATION:

NE 1/4 NE 1/4, SEC. 15, T5N, R65W, 6TH P.M.  
WELD COUNTY, COLORADO

PREPARED FOR:

