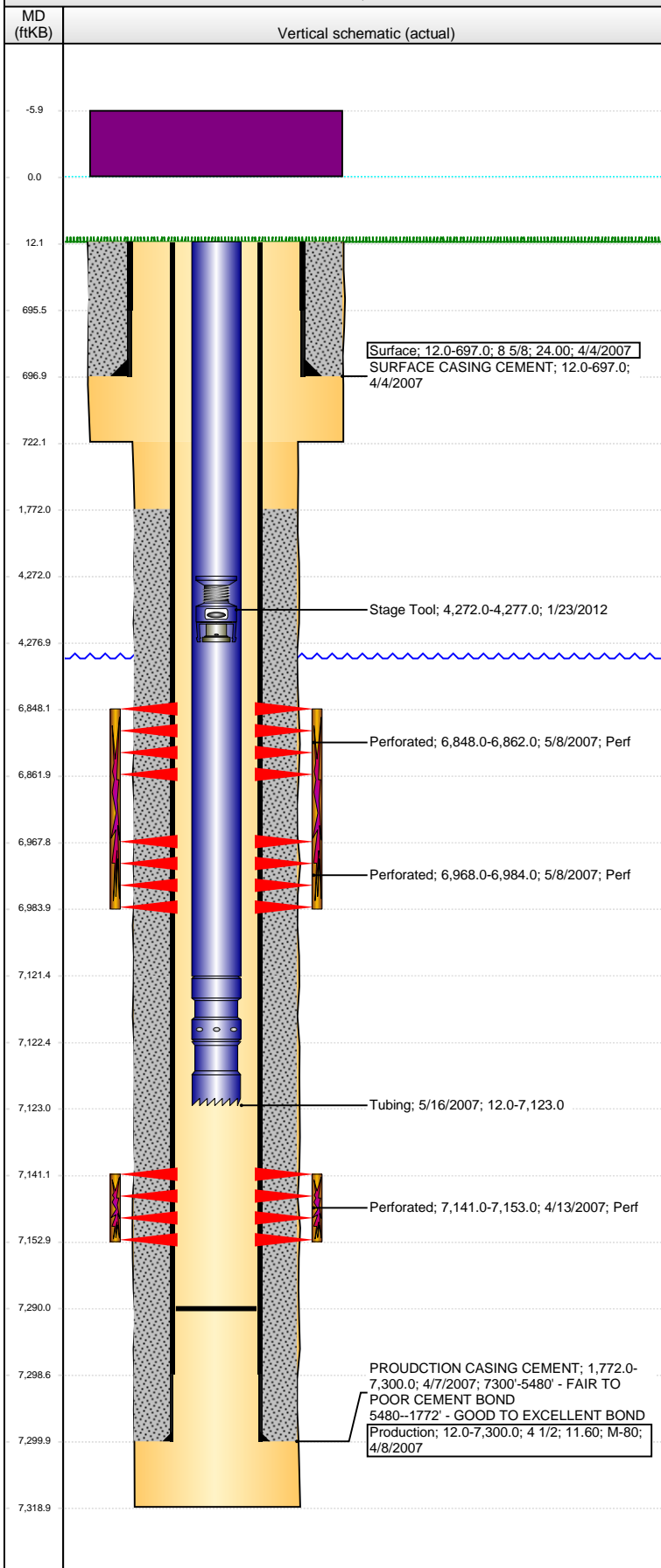


Well Name: RICHTER USX AB27-19

VERTICAL - ORIGINAL HOLE, 5/26/2015 8:14:27 AM



| Well Header | | | | | | | | |
|----------------------------------------|---------------------------|-------------------------------|---------------------|--------------------------------|----------------------|-------------------------|---------------------|------------------|
| API 05-123-24537 | | Business Unit DJ BASIN | | District 15 | | Well Config VERTICAL | | |
| Original KB Elevation (ft) 4,912.00 | | KB - GL / MSL (ftKB) 12.00 | | Spud Date 4/4/2007 | | P & A Date | | |
| Comment | | | | | | | | |
| Directions To Well | | | | | | | | |
| Congressional Location | | | | | | | | |
| Quarter 1 | Quarter 2 | Quarter 3 | Quarter 4 | Section | Township | Twnshp N... | Range | Rng E/W Dir |
| | | NE | NW | 27 | 7 | N | 64 | W |
| Bottom Hole Location | | | | | | | | |
| North-South Distance (ft) | | From N or S Line | | East-West Distance (ft) | | From E or W Line | | |
| Plug Back Total Depths | | | | | | | | |
| Date | Depth (ftKB) | Method | | | Com | | | |
| 4/13/2007 | 7,278.0 | CASED HOLE LOG | | | DEPTH LOGGER ON CBL | | | |
| 5/15/2007 | 7,290.0 | TAG | | | MOST RECENT CLEANOUT | | | |
| Wellbore Sections | | | | | | | | |
| Section Des | | | Size (in) | | Act Top, MD (ftKB) | | Act Btm, MD (ftKB) | |
| SURFACE | | | 12 1/4 | | 12.0 | | 722.0 | |
| PRODUCTION | | | 7 7/8 | | 722.0 | | 7,319.0 | |
| Zone Statuses | | | | | | | | |
| Zone Name | Status Date | Status | Fluid Type | | Job | Prod Method | | |
| NIOBRARA | 6/1/2007 | PR | | | DRILLING/CO... | | | |
| CODELL | 6/1/2007 | PR | | | DRILLING/CO... | | | |
| Casing Strings | | | | | | | | |
| Surface, 697.0ftKB | | | | | | | | |
| Casing Description | | Run Date | OD (in) | Wt/Len (l... | Grade | Top, MD (ft... | MD (ftKB) | |
| Surface | | 4/4/2007 | 8 5/8 | 24.00 | | 12.0 | 697.0 | |
| Production, 7,300.0ftKB | | | | | | | | |
| Casing Description | | Run Date | OD (in) | Wt/Len (l... | Grade | Top, MD (ft... | MD (ftKB) | |
| Production | | 4/8/2007 | 4 1/2 | 11.60 | M-80 | 12.0 | 7,300.0 | |
| Cement | | | | | | | | |
| Description | | | | | Top Depth (ftKB) | | Bottom Depth (ftKB) | |
| SURFACE CASING CEMENT | | | | | 12.0 | | 697.0 | |
| Description | | | | | Top Depth (ftKB) | | Bottom Depth (ftKB) | |
| PRODUCTION CASING CEMENT | | | | | 1,772.0 | | 7,300.0 | |
| Tubing Strings | | | | | | | | |
| Tubing Description | | Run Date | String... | ID (in) | Wt (lb/ft) | Grade | Len (ft) | Set De... |
| Tubing | | 5/16/2007 | 2 3/8 | 1.995 | 4.70 | J-55 | 7,111.00 | |
| Tubing Components | | | | | | | | |
| Item Des | | OD (in) | Wt (lb/ft) | Grade | Jts | Len (ft) | Btm (ftKB) | Btm (TVD) (ftKB) |
| EUE 8rd Tubing | | 2 3/8 | 4.70 | J-55 | 230 | 7,109.35 | 7,121.3 | |
| Seal Nipple | | 2 3/8 | | | | 1.00 | 7,122.3 | |
| Notched collar | | 2 3/8 | | | | 0.65 | 7,123.0 | |
| Perforation Data | | | | | | | | |
| Zone | | Bnch/St g | Entered Shot Total | Top (ftKB) | | Btm (ftKB) | | Date |
| NIOBRARA, <idrecwellbore> | | | 56 | 6,848.00 | | 6,862.00 | | 5/8/2007 |
| NIOBRARA, <idrecwellbore> | | | 64 | 6,968.00 | | 6,984.00 | | 5/8/2007 |
| CODELL, <idrecwellbore> | | | 48 | 7,141.00 | | 7,153.00 | | 4/13/2007 |
| Stimulations & Treatments | | | | | | | | |
| Date | Zone | | | Primary Job Type | | | | |
| 5/8/2007 | CODELL, <idrecwellbore> | | | DRILLING/COMPLETION - ORIGINAL | | | | |
| Technical Result | | | Tech Result Details | | | Tech Result Note | | |
| Comment | | | | | | | | |
| Date | Zone | | | Primary Job Type | | | | |
| 5/8/2007 | NIOBRARA, <idrecwellbore> | | | DRILLING/COMPLETION - ORIGINAL | | | | |
| Technical Result | | | Tech Result Details | | | Tech Result Note | | |
| Comment | | | | | | | | |
| | | | | | | | | |

Well Name: RICHTER USX AB27-19

VERTICAL - ORIGINAL HOLE, 5/26/2015 8:14:29 AM

Other In Hole

| Run Date | Des | OD (in) | Top (ftKB) | Btm (ftKB) |
|-----------|------------|---------|------------|------------|
| 1/23/2012 | Stage Tool | 2 | 4,272.0 | 4,277.0 |

Logs

| Date | Type | Top, MD (ftKB) | Btm, MD (ftKB) |
|-----------|---------------------|----------------|----------------|
| 4/8/2007 | COMPENSATED DENSITY | 2,950.0 | 7,299.0 |
| 4/8/2007 | INDUCTION | 697.0 | 7,319.0 |
| 4/13/2007 | CBL/CCL/GR | 7,276.0 | 1,643.0 |

