



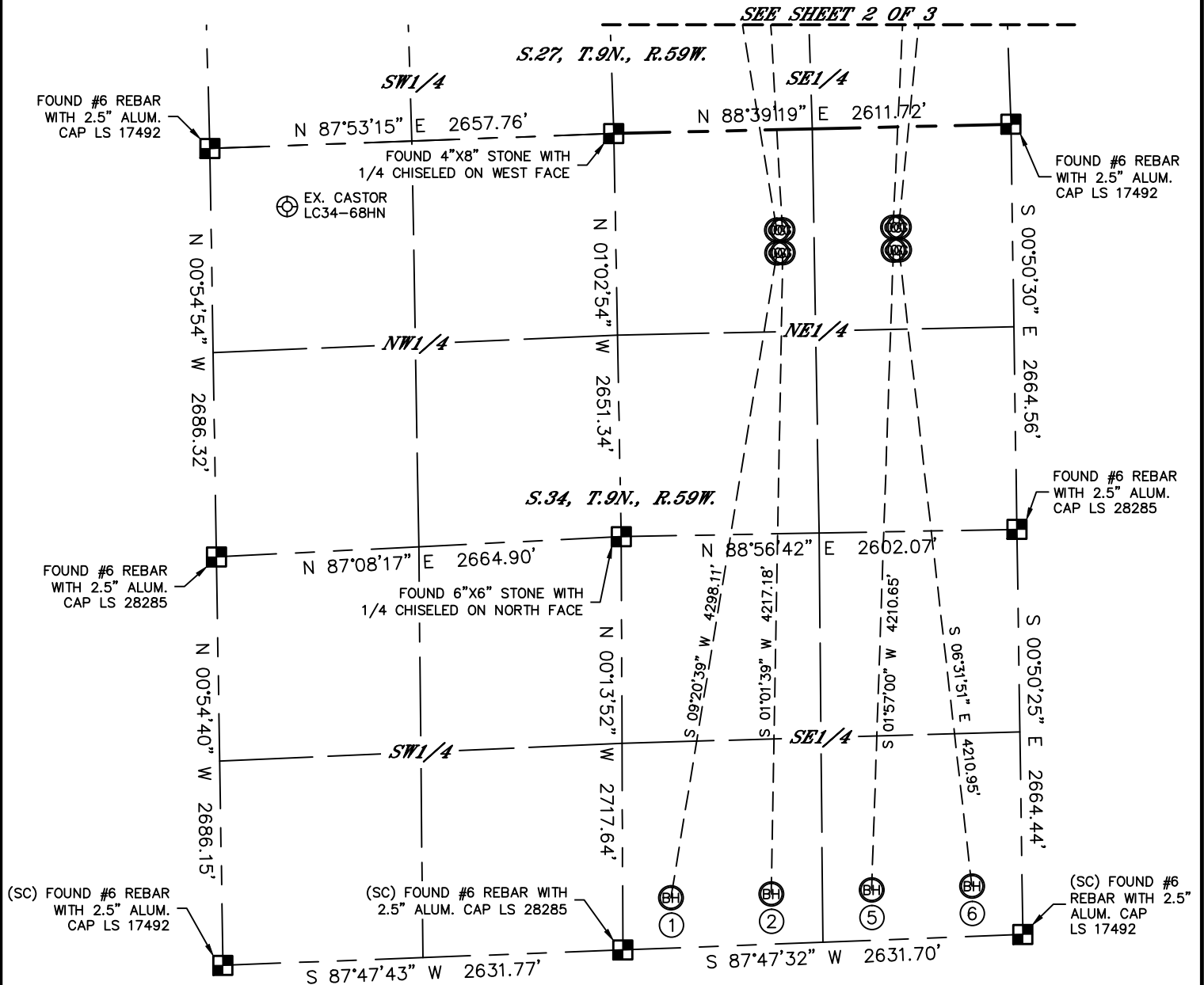
Lat40°, Inc. 1635 Foxtrail Drive, Suite 325 Loveland, CO 970-776-3321

MULTI-WELL PLAN

REMORA LC34-745 PAD

SECTION: 34
TOWNSHIP: 9N
RANGE: 59W

THIS MAP DOES NOT REPRESENT A BOUNDARY SURVEY



#	WELL NAME	BHL FOOTAGE			BHL LAT °	BHL LONG °	1/4/1/4	
1	REMORA LC34-745	330	FSL	2310	FEL	40.70045	-103.96262	SWSE
2	REMORA LC34-735	330	FSL	1650	FEL	40.70049	-103.96024	SWSE
3	HALEY LC27-745	330	FNL	2310	FEL	40.72805	-103.96288	NWNE
4	HALEY LC27-735	330	FNL	1650	FEL	40.72808	-103.96050	NWNE
5	REMORA LC34-725	330	FSL	990	FEL	40.70052	-103.95786	SESE
6	REMORA LC34-715	330	FSL	330	FEL	40.70056	-103.95548	SESE
7	HALEY LC27-715	330	FNL	330	FEL	40.72813	-103.95574	NENE
8	HALEY LC27-711	330	FNL	1	FEL	40.72814	-103.95456	NENE

SHEET 1 OF 3

DATE: 4/28/2015
PROJECT#: 2013186



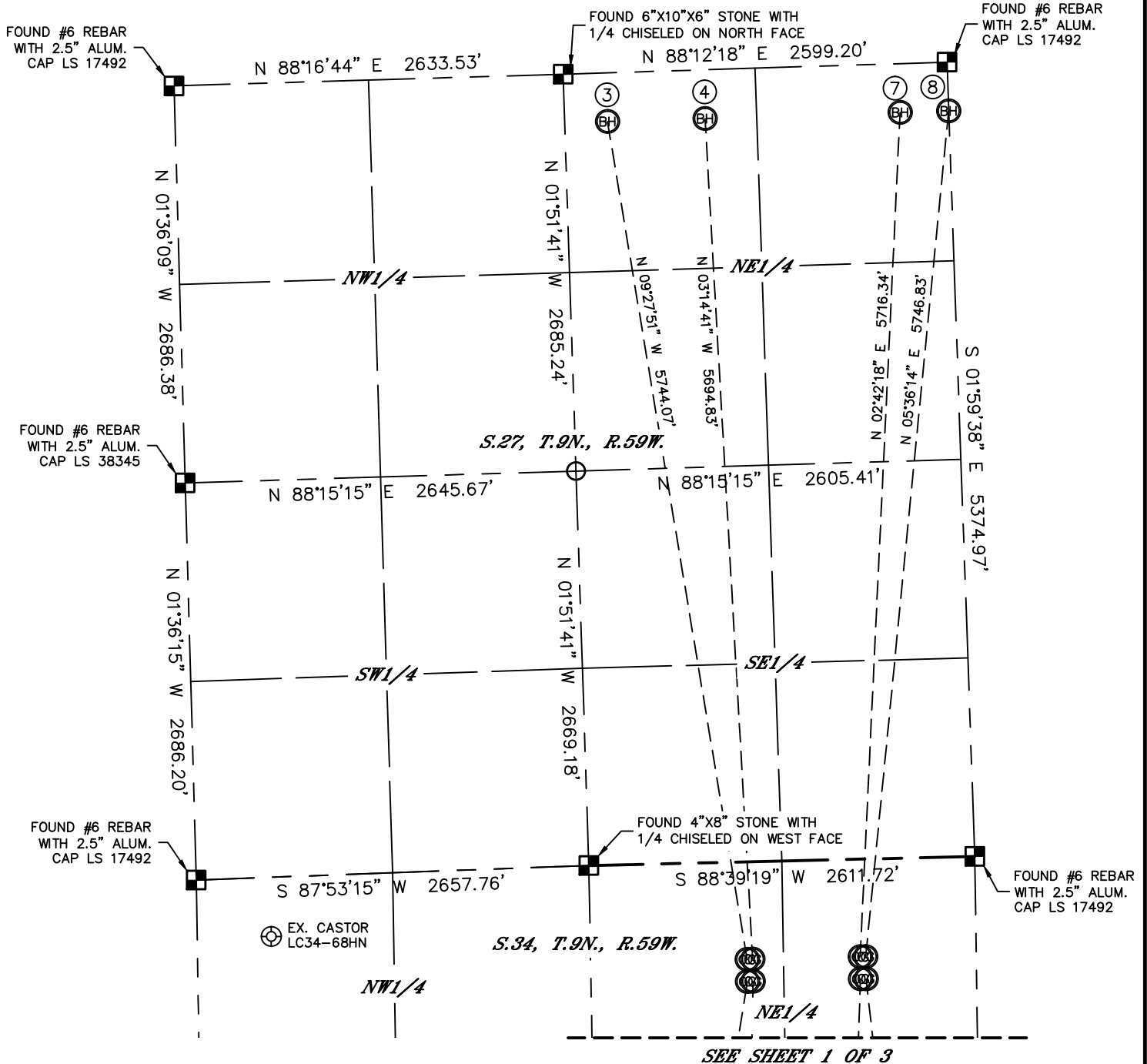
Lat40°, Inc. 1635 Foxtrail Drive, Suite 325 Loveland, CO 970-776-3321

MULTI-WELL PLAN

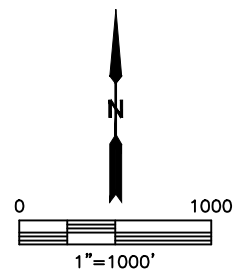
REMORA LC34-745 PAD

THIS MAP DOES NOT REPRESENT A BOUNDARY SURVEY

SECTION: 34
TOWNSHIP: 9N
RANGE: 59W



#	WELL NAME	BHL FOOTAGE			BHL LAT °	BHL LONG °	1/4/1/4	
1	REMORA LC34-745	330	FSL	2310	FEL	40.70045	-103.96262	SWSE
2	REMORA LC34-735	330	FSL	1650	FEL	40.70049	-103.96024	SWSE
3	HALEY LC27-745	330	FNL	2310	FEL	40.72805	-103.96288	NWNE
4	HALEY LC27-735	330	FNL	1650	FEL	40.72808	-103.96050	NWNE
5	REMORA LC34-725	330	FSL	990	FEL	40.70052	-103.95786	SESE
6	REMORA LC34-715	330	FSL	330	FEL	40.70056	-103.95548	SESE
7	HALEY LC27-715	330	FNL	330	FEL	40.72813	-103.95574	NENE
8	HALEY LC27-711	330	FNL	1	FEL	40.72814	-103.95456	NENE



SHEET 2 OF 3

DATE: 4/28/2015
PROJECT#: 2013186



MULTI-WELL PLAN
REMORA LC34-745 PAD

SECTION: 34
TOWNSHIP: 9N
RANGE: 59W

