



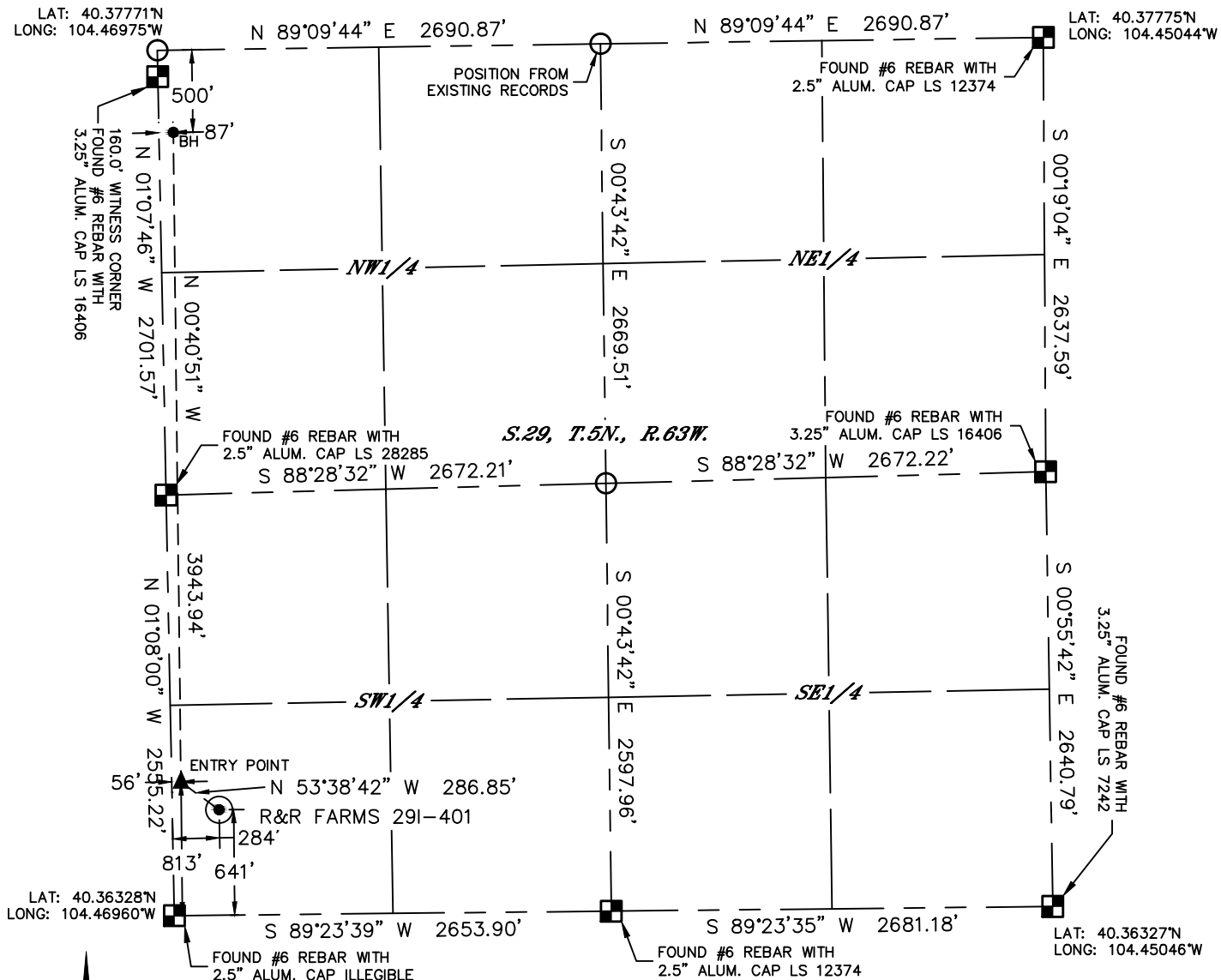
Lat40°, Inc. 6250 W. 10th Street, Unit 2, Greeley, CO 970-515-5294

WELL LOCATION CERTIFICATE

R&R FARMS 29I-40I

THIS MAP DOES NOT REPRESENT A BOUNDARY SURVEY

SECTION: 29
TOWNSHIP: 5N
RANGE: 63W



In accordance with a request from Jeff Dillingham with PDC ENERGY, INC. Lat40°, Inc. has determined the surface location of the R&R FARMS 29I-40I to be 641' from the SOUTH line and 284' from the WEST line and the bottom hole to be 500' from the NORTH line and 87' from the WEST line as measured at right angles from the section lines of Section 29, Township 5 North, Range 63 West of the Sixth Principal Meridian, County of Weld, State of Colorado.

I hereby state that this Well Location Certificate was prepared by me, or under my direct supervision, that the fieldwork was completed on 3/16/2015, for and on behalf of PDC ENERGY, INC. That this is not a Land Survey Plat or an Improvement Survey Plat, and that it is not to be relied upon for establishment of fence, building, or other future improvement lines.

NOTE:

- 1) Bearings shown are Grid Bearings of the Colorado State Plane Coordinate System, North Zone, North American Datum 1983. The lineal dimensions as contained herein are based upon the "U.S. Survey Foot."
- 2) Ground elevations are based on an observed GPS elevation (NAVD 1988 DATUM).
- 3) IMPROVEMENTS: See LOCATION DRAWING for all visible improvements within 500' of oil and gas location.
- 4) SURFACE USE: CROP LAND
- 5) INSTRUMENT OPERATOR: BRIAN ROTTINGHAUS
- 6) NEAREST CULTURAL ITEMS:
BUILDING: ±300' S
BUILDING UNIT: ±410' S
HIGH OCCUPANCY BUILDING UNIT: +5280'
DESIGNATED OUTSIDE ACTIVITY AREA: +5280'
PUBLIC ROAD: ±271' W (CR 63)
ABOVEGROUND UTILITY: ±314' W
RAILROAD: +5280'
PROPERTY LINE: ±284' W

SURFACE LOCATION

LAT: 40.36504°N
LONG: 104.46860°W
PDOP: 1.9
ELEV: 4575'
1/4,1/4: SWSW

BOTTOM HOLE

LAT: 40.37634°N
LONG: 104.46942°W

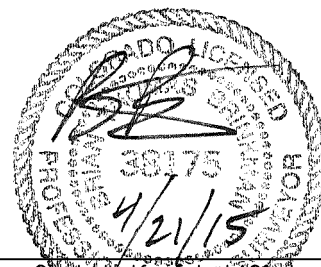
ENTRY POINT

LAT: 40.36551°N
LONG: 104.46942°W

LEGEND

- = ALIQUOT MONUMENT AS DESCRIBED
○ = CALCULATED POSITION

Brian T. Brinkman—On behalf of Lat40°, Inc.
Colorado Licensed Professional Land Surveyor No. 38175
DATE: 04/21/2015
PROJECT#: 2014131



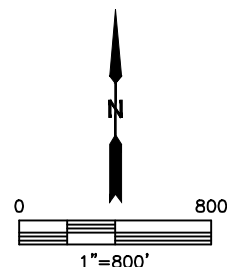
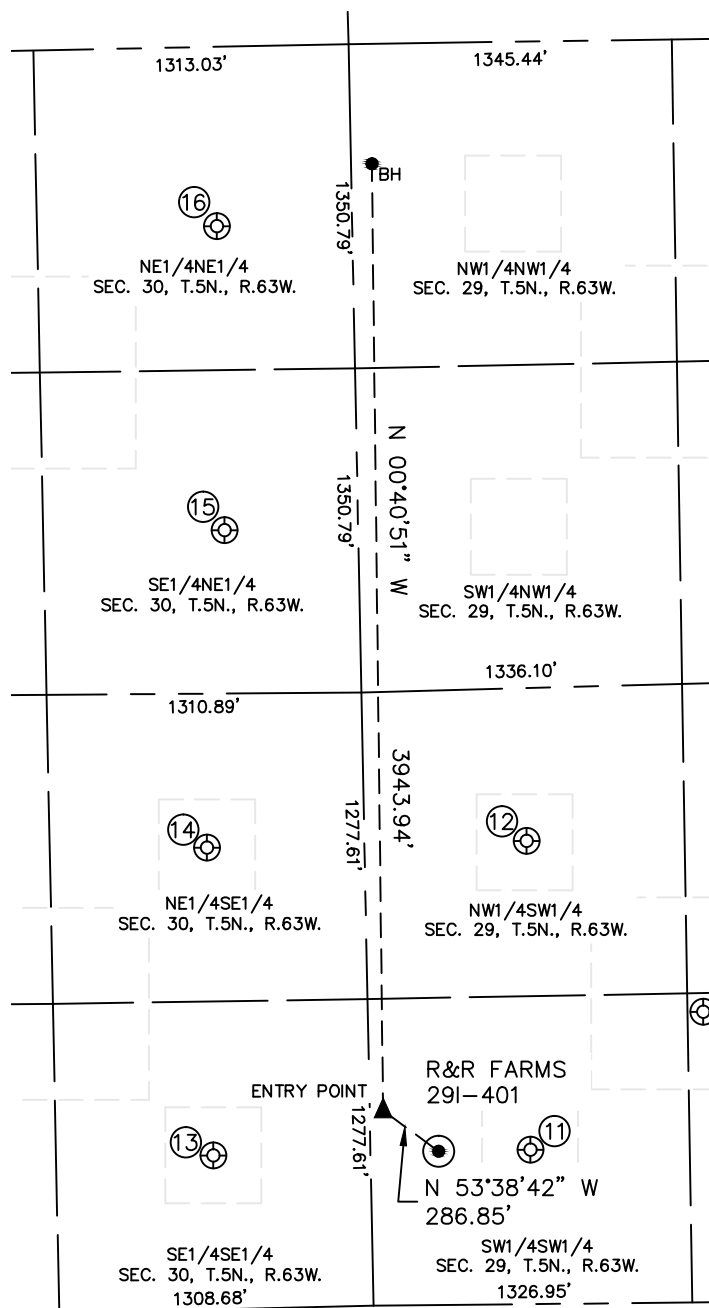


Lat40°, Inc. 6250 W. 10th Street, Unit 2, Greeley, CO 970-515-5294

SITE SKETCH

R&R FARMS 29I-401

SECTION: 29
TOWNSHIP: 5N
RANGE: 63W



WELL NO.	WELL NAME	SHL FOOTAGE				SHL LAT°	SHL LONG°	PDOP	ELEV (FT.)	1/4/1/4
11	ROTHE 14-29U	642	FSL	666	FWL	40.36504	-104.46723	1.8	4572	SWSW
12	ROTHE 13-29U	1930	FSL	676	FWL	40.36858	-104.46723	1.7	4568	NWSW
13	ROTHE 44-30	669	FSL	654	FEL	40.36502	-104.47196	1.8	4575	SESE
14	ROTHE 43-30	1951	FSL	655	FEL	40.36854	-104.47200	1.5	4576	NESE
15	PETERSON 30-42	2015	FNL	557	FEL	40.37217	-104.47169	1.7	4556	SENE
16	PETERSON 30-41	747	FNL	564	FEL	40.37564	-104.47175	2.1	4552	NENE

DATE: 04/21/2015
PROJECT#: 2014131