

1801 Broadway  
Suite 500  
Denver, Colorado 80202



Allison Linz  
Regulatory Technician  
Tel: 303.398.0355  
E-mail: alinz@gwogco.com

May 19, 2015

Colorado Oil and Gas Conservation Commission  
1120 Lincoln Street, Suite 801  
Denver, Colorado 80203

RE: **Proposed Wellbore Spacing Unit**  
Simpson FD 16-379HN

Niobrara New Drill  
Township 6 North, Range 67 West, 6<sup>th</sup> P.M.  
SENE Section 15  
Weld County, Colorado

Dear Director:

Great Western Operating Company, LLC is planning to drill the above captioned well in accordance with the provisions of COGCC Rule 318A.e.

Great Western proposed wellbore spacing unit consists of:

- **Sec 15: S/2SW/4; Sec 16: S/2S/2; Sec 21: N/2N/2; Sec 22: N/2NW/4**
- **480 Acres**

The 30 day notification time period has passed and we have not received any objections to such well locations or proposed spacing unit, therefore Great Western hereby requests the Director to approve the above mentioned well. Great Western Operating Company, LLC respectfully requests that the COGCC review the enclosed map illustrating the proposed wellbore spacing unit.

Respectfully,

*Allison Linz*

Allison Linz  
Regulatory Technician  
Great Western Operating Company, LLC

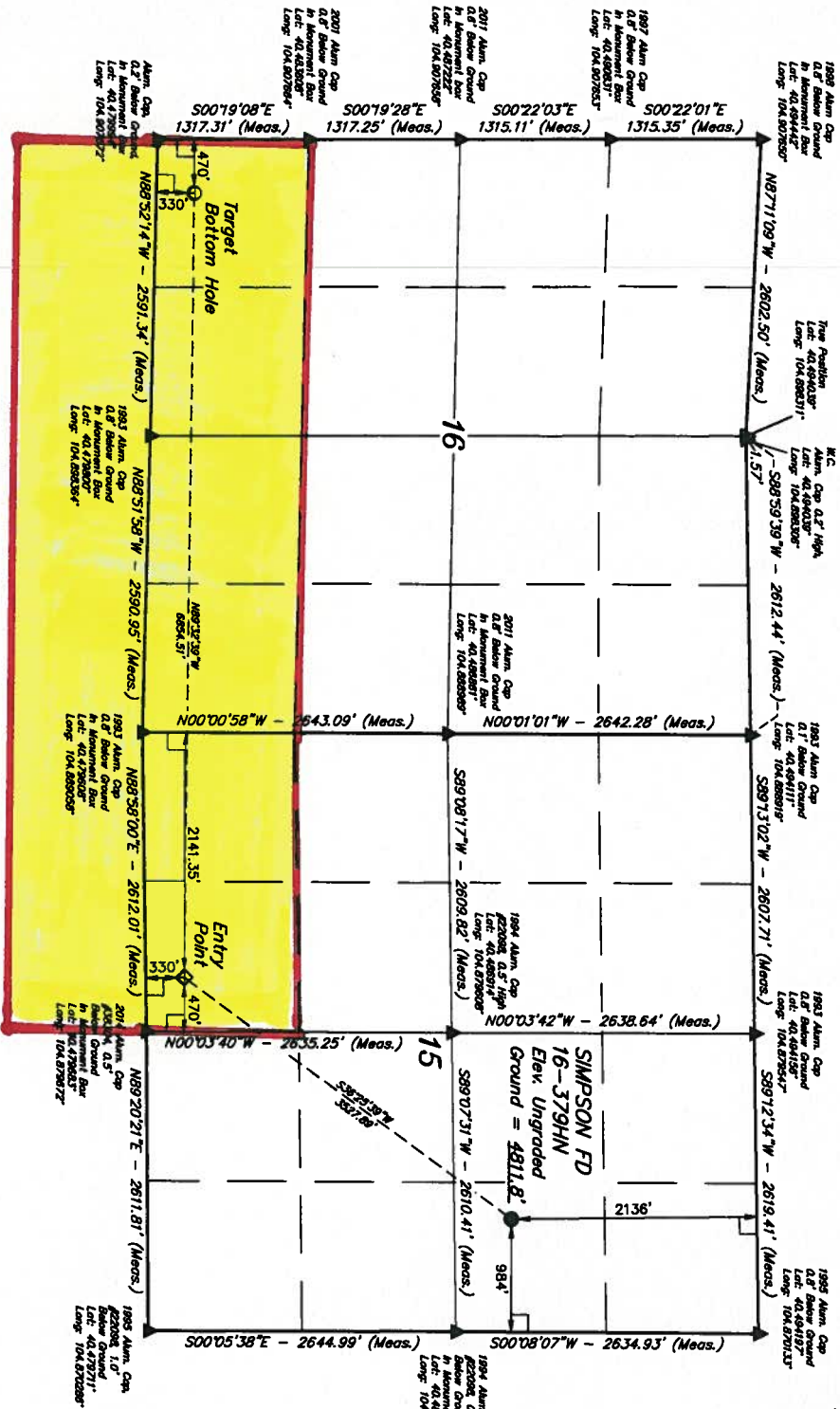
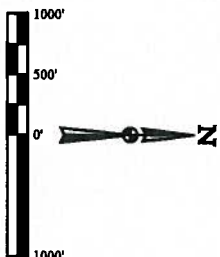
T6N, R67W, 6th P.M.

GREAT WESTERN OIL & GAS COMPANY

SIMPSON FD 16-379HN  
SE 1/4 NE 1/4 SECTION 16, T6N, R67W, 6th P.M.  
WELD COUNTY, COLORADO

USGS COOPERATIVE BASE NETWORK CONTROL STATION  
DESIGNATION "VERMILYEA" NOS DATA SHEET LISTS THE  
NAVD 88 ELEVATION AS BEING 3026 FEET.

BASE OF BEARINGS  
BASE OF ELEVATION



- LEGEND:**
- 60' SYMBOL
  - PROPOSED WELLHEAD
  - TARGET BOTTOM HOLE
  - △ ENTRY POINT
  - △ SECTION CORNERS RE-ESTABLISHED
  - (Not Shown on Ground)

NAVD 88 TARGET BOTTOM HOLE	NAVD 88 ENTRY POINT	NAVD 88 MONUMENT LOCATIONS
LATITUDE = 40°25'11.1" (40.419750)	LATITUDE = 40°25'11.1" (40.419750)	LATITUDE = 40°25'11.1" (40.419750)
LONGITUDE = 104°52'14.4" (104.869833)	LONGITUDE = 104°52'14.4" (104.869833)	LONGITUDE = 104°52'14.4" (104.869833)
NAVD 88 TARGET BOTTOM HOLE	NAVD 88 ENTRY POINT	NAVD 88 MONUMENT LOCATIONS
LATITUDE = 40°25'11.1" (40.419750)	LATITUDE = 40°25'11.1" (40.419750)	LATITUDE = 40°25'11.1" (40.419750)
LONGITUDE = 104°52'14.4" (104.869833)	LONGITUDE = 104°52'14.4" (104.869833)	LONGITUDE = 104°52'14.4" (104.869833)

PROP - 1.3

**UNITAH**  
SURVEYED BY: DALLAS NILES, D.W. DATE: 03-13-15  
DRAWN BY: J.W. DATE: 03-13-15  
SCALE: 1" = 1000' REVISED: 04-27-15 J.S.

**WELL LOCATION PLAN**

Corporate Office • 65 South 200 East  
Vernal, UT 84078 • (435) 789-1017

**CERTIFICATE OF RECORD**  
THIS IS TO CERTIFY THAT THE ABOVE DESCRIBED SURVEY WAS MADE BY THE SURVEYOR AND THAT THE SAME ARE TRUE AND CORRECT TO THE BEST OF HIS KNOWLEDGE AND BELIEF.

**RECORDED AND RETURNED**  
RECORDED AND RETURNED TO THE SURVEYOR  
STATE OF UTAH, COUNTY OF GARFIELD, 03-13-15