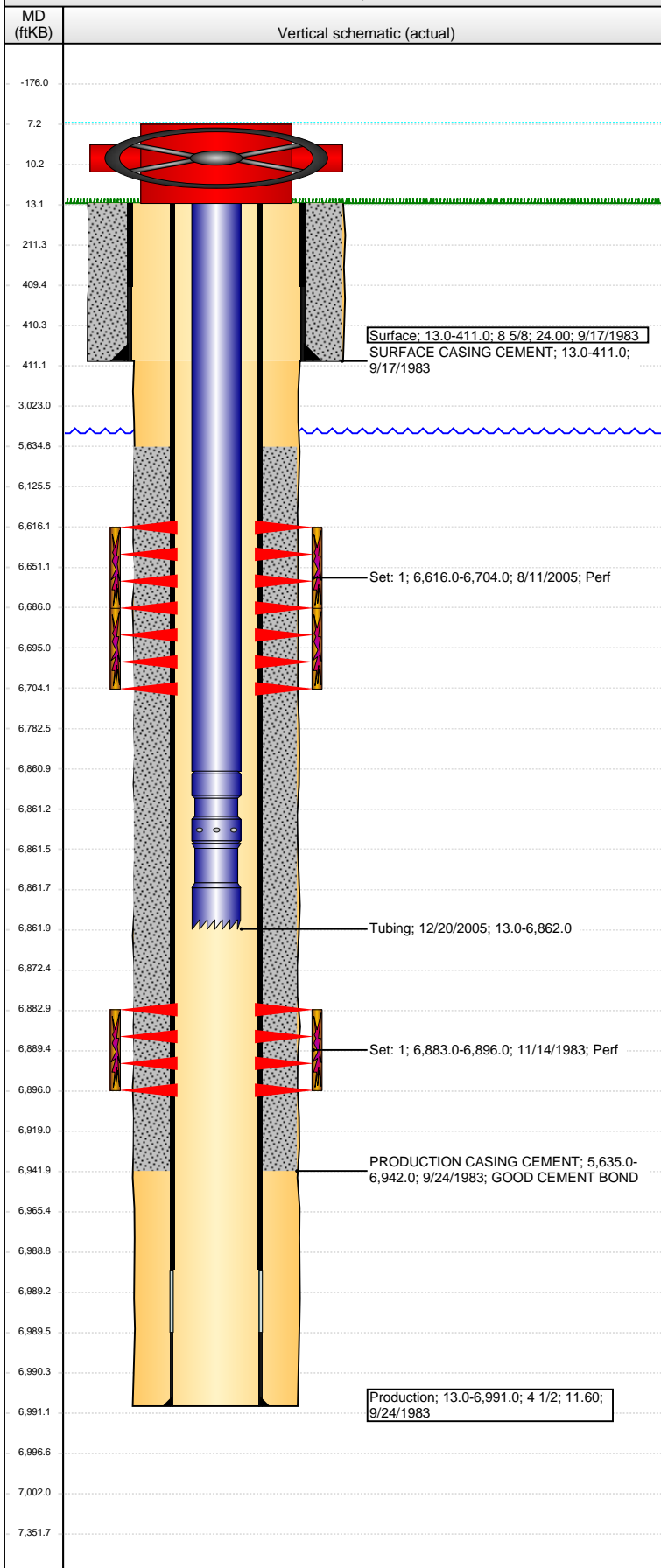


Well Name: LEONARD 01

VERTICAL - ORIGINAL HOLE, 5/20/2015 8:26:06 AM



Well Header

API 05-123-11313	Business Unit DJ BASIN	District 15	Well Config VERTICAL
Original KB Elevation (ft) 4,721.00	KB - GL / MSL (ftKB) 13.00	Spud Date 9/17/1983	P & A Date

Comment
POOR/SKETCHY DATA; USED INFO FROM STATE REPORTS AND SCHEMATIC; RIG RELEASE DATE ESTIMATED

PACKER STILL IN HOLE WITH TOP OF FISH @6871' WITH 1.992" GRAPPLE ON TOP.

Directions To Well

Congressional Location

Quarter 1	Quarter 2	Quarter 3 SW	Quarter 4 SE	Section 21	Township 4 N	Twnshp N...	Range 64	Rng E/W Dir W
-----------	-----------	-----------------	-----------------	---------------	-----------------	-------------	-------------	------------------

Bottom Hole Location

North-South Distance (ft)	From N or S Line	East-West Distance (ft)	From E or W Line
---------------------------	------------------	-------------------------	------------------

Plug Back Total Depths

Date	Depth (ftKB)	Method	Com
10/11/1983	6,948.0	CASED HOLE LOG	
11/14/1983	7,002.0	TAG	

Wellbore Sections

Section Des	Size (in)	Act Top, MD (ftKB)	Act Btm, MD (ftKB)
SURFACE	12 1/4	13.0	411.0
PRODUCTION	7 7/8	411.0	6,991.0

Zone Statuses

Zone Name	Status Date	Status	Fluid Type	Job	Prod Method
CODELL	12/21/1983	PR		DRILLING/CO...	
NIORARA	9/21/2005	PR		RE-FRAC, 8/4/...	
NIORARA-C...	1/4/2006	PR		COMMINGLE...	

Casing Strings

Surface, 411.0ftKB

Casing Description	Run Date	OD (in)	Wt/Len (l...)	Grade	Top, MD (ft...)	MD (ftKB)
Surface	9/17/1983	8 5/8	24.00		13.0	411.0

Production, 6,991.0ftKB

Casing Description	Run Date	OD (in)	Wt/Len (l...)	Grade	Top, MD (ft...)	MD (ftKB)
Production	9/24/1983	4 1/2	11.60		13.0	6,991.0

Cement

Description	Top Depth (ftKB)	Bottom Depth (ftKB)
PRODUCTION CASING CEMENT	5,635.0	6,942.0
SURFACE CASING CEMENT	13.0	411.0

Tubing Strings

Tubing Description	Run Date	String...	ID (in)	Wt (lb/ft)	Grade	Len (ft)	Set De...
Tubing	12/20/2005	5	2 3/8	1.995	4.70	J-55	6,849.00

Tubing Components

Item Des	OD (in)	Wt (lb/ft)	Grade	Jts	Len (ft)	Btm (ftKB)	Btm (TVD) (ftKB)
EUE 8rd Tubing	2 3/8	4.70	J-55	213	6,847.90	6,860.9	
Seal Nipple	2 3/8			1	0.60	6,861.5	
Notched collar	2 3/8			1	0.50	6,862.0	

Perforation Data

Zone	Bnch/St g	Entered Shot Total	Top (ftKB)	Btm (ftKB)	Date
NIORARA, ORIGINAL HOLE		108	6,616.00	6,704.00	8/11/2005
CODELL, ORIGINAL HOLE		17	6,883.00	6,896.00	11/14/1983

Stimulations & Treatments

Date	Zone	Primary Job Type
12/2/1983	CODELL, ORIGINAL HOLE	DRILLING/COMPLETION - ORIGINAL
Technical Result	Tech Result Details	Tech Result Note

Comment

Well Name: LEONARD 01

VERTICAL - ORIGINAL HOLE, 5/20/2015 8:26:08 AM

Stimulations & Treatments

Date 9/20/2005	Zone NIOBRARA, ORIGINAL HOLE	Primary Job Type RE-FRAC
Technical Result	Tech Result Details	Tech Result Note
Comment		

Other In Hole

Run Date	Des	OD (in)	Top (ftKB)	Btm (ftKB)

Logs

Date	Type	Top, MD (ftKB)	Btm, MD (ftKB)
9/23/1983	GAMMA RAY	4,100.0	7,020.0
9/23/1983	INDUCTION	411.0	7,014.0
10/11/1983	CEMENT BOND	5,500.0	6,942.0
4/16/2015	GYRO	13.0	6,800.0

